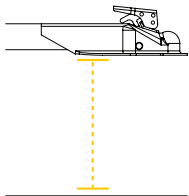




5X MOUNTING BRACKET

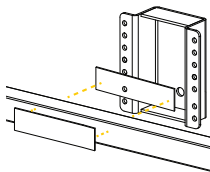
Operating Instructions

TV5XMB
Rev 6.13.23



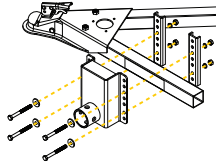
STEP 1:

Check trailer height and raise the trailer tongue to where the frame is about 16 inches off the ground to give adequate space to attach the dolly.



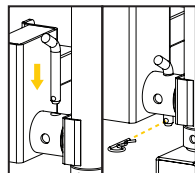
STEP 2:

Included with the Mount Bracket is a cushion strip. Cut the strip into desired lengths and using the one-sided adhesive, place the strips between the bracket and your trailer frame.



STEP 3:

Install the 5X Mount Bracket to your the trailer frame.



STEP 4:

Make sure to secure the Mount Bracket to the 5X utilizing the stow pin.

WARNING!

The 5X is only to be installed on trailer tongues that are rectangular in profile. Cylindrical frames are not compatible with the 5X as it will rotate, allowing the trailer to drop