

125LB TOW-BEHIND SPREADER



Instruction & Assembly

SAVE THESE INSTRUCTIONS FOR FUTURE REFERENCE

Table of Contents

General Warnings and Rules.....3

Hazard Signal Word Definitions.....4

Component & Hardware5

Assembly Instructions.....6, 7, 8, 9

Specification9

Maintenance and Storage9

Parts Drawing & Parts List..... 10, 11, 12

Limited Warranty.....13

GENERAL WARNINGS

READ and UNDERSTAND this manual completely before using Tow-behind Spreader.

Operator must read and understand all safety and warning information, operating instructions, maintenance and storage instructions before operating this equipment. Failure to properly operate and maintain the tow-behind spreader could result in serious injury to the operator or bystanders.

Operation Warnings

- Do not at any time carry passengers sit or stand on the spreader.
- Do not allow children to play on, stand upon or climb in the spreader.
- Always inspect the spreader before using to assure it is in good working condition.
- Replace or repair damaged or worn parts immediately.
- Always check and tighten hardware and assembled parts before operation.
- Do not exceed equipment maximum load capacity of 125lb.
- Avoid large holes and ditches when transporting loads.
- Be careful when operating on steep grades (hill) the spreader may tip over.
- Do not push close to creeks, ditches and public highways.
- Do not use spreader on windy days when spreading grass seed or herbicides.
- Always use caution when loading and unloading spreader.
- Never tow the spreader with a motorized vehicle.

Crush and Cut Hazards

- Always keep hands and feet clear from moving parts while operating the equipment.
- Always clear and keep work area clean when operating.
- Always wear safety gear, eye protection, gloves and work boots when operating the spreader.

WARNING

The warnings, cautions, and instructions outlined in this instruction manual cannot cover all possible conditions or situations that may occur. It must be understood by the operator that common sense and caution are factors which cannot be built into this product and must be supplied by the operator.






PROP 65 WARNING

This product can expose you to chemicals including lead and lead compounds which are known to the State of California to cause cancer and birth defects or other reproductive harm. For more information, go to www.P65Warnings.ca.gov.

Assembly Is Required

This product requires assembly before use. See "Assembly" section for instructions. Because of the weight and size of the push spreader, it is recommended that another adult be present to assist with the assembly. **INSPECT ALL COMPONENTS** closely upon receipt to make sure no components are missing or damaged.

Hazard Signal Word Definitions

	<p>This is the safety alert symbol. It is used to alert you to potential personal injury hazards. Obey all safety messages that follow this symbol to avoid possible injury or death.</p>
	<p>DANGER indicates an imminently hazardous situation which, if not avoided, will result in death or serious injury.</p>
	<p>WARNING indicates a potentially hazardous situation which, if not avoided, could result in death or serious injury.</p>
	<p>CAUTION indicates a potentially hazardous situation which, if not avoided, may result in minor or moderate injury.</p>
	<p>CAUTION used without the safety alert symbol indicates a potentially hazardous situation which, if not avoided, may result in property damage.</p>

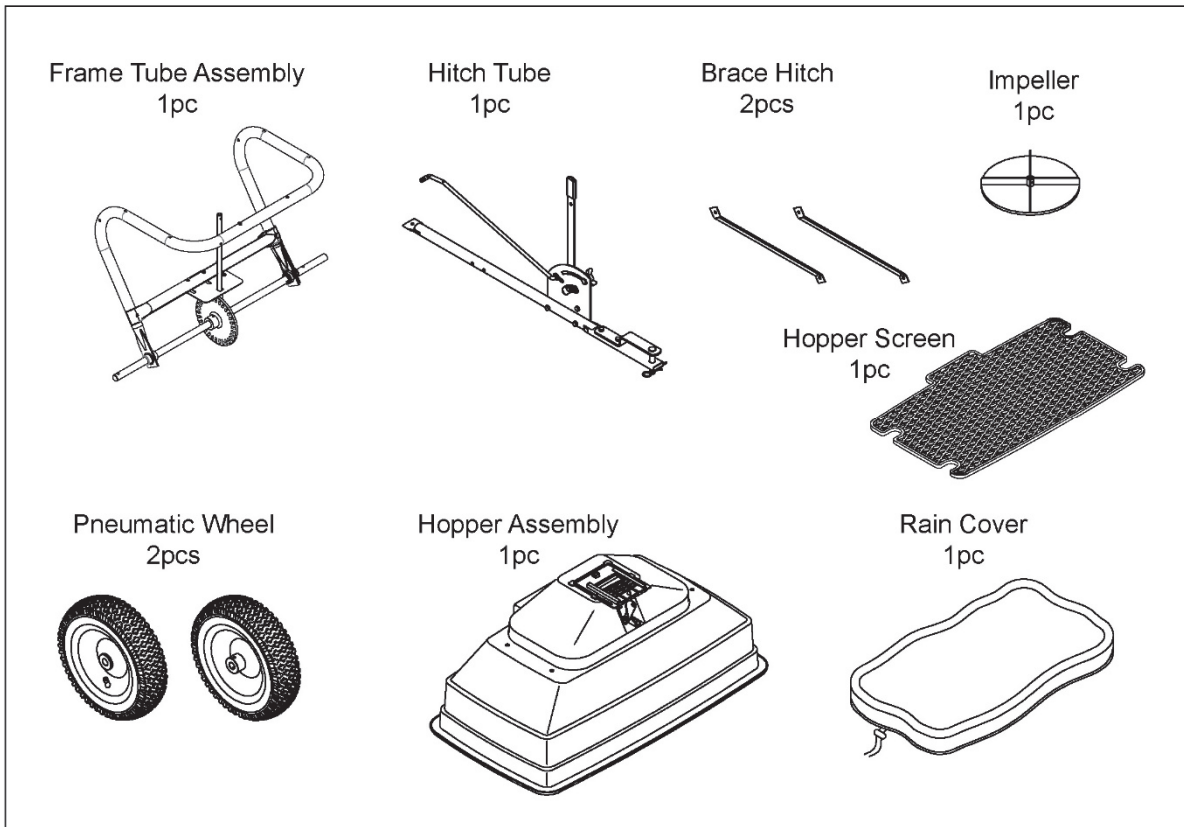
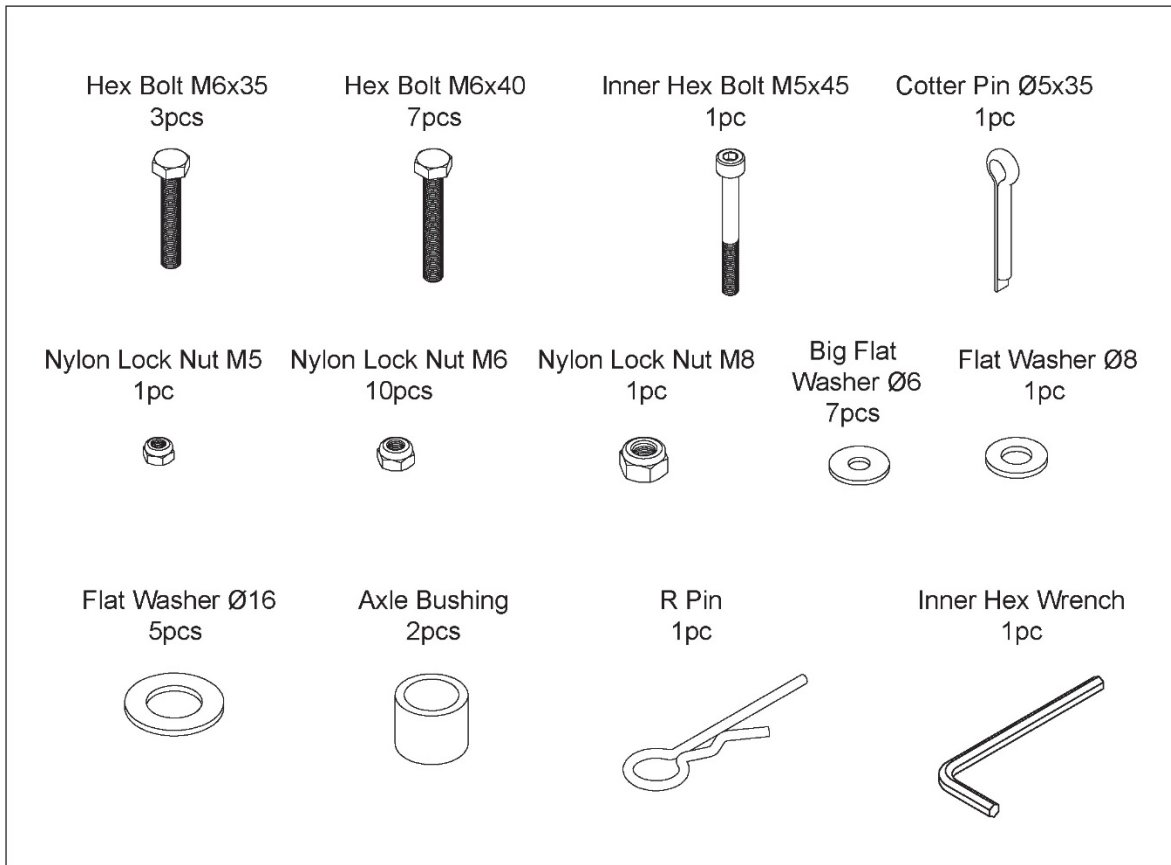
ABOUT YOUR TOW-BEHIND SPREADER

This tow-behind spreader is designed to spread a wide range of materials (Fertilizer, Grass Seed and Ice Melt). Materials such as Powders, Manure, Top Soil, Gravel, and Mulch have the wrong physical characteristics and should not be used with this spreader. Never exceed the rated load capacity of 125lbs when operating the spreader.

Your spreader needs to be pushed at three miles per hour, which is a brisk walking speed. Slower or faster speeds will change the spread patterns. Wet spreading material will also change the spread pattern and flow rate. Clean your spreader thoroughly after each use. Wash between the shut off plate and bottom of the hopper.

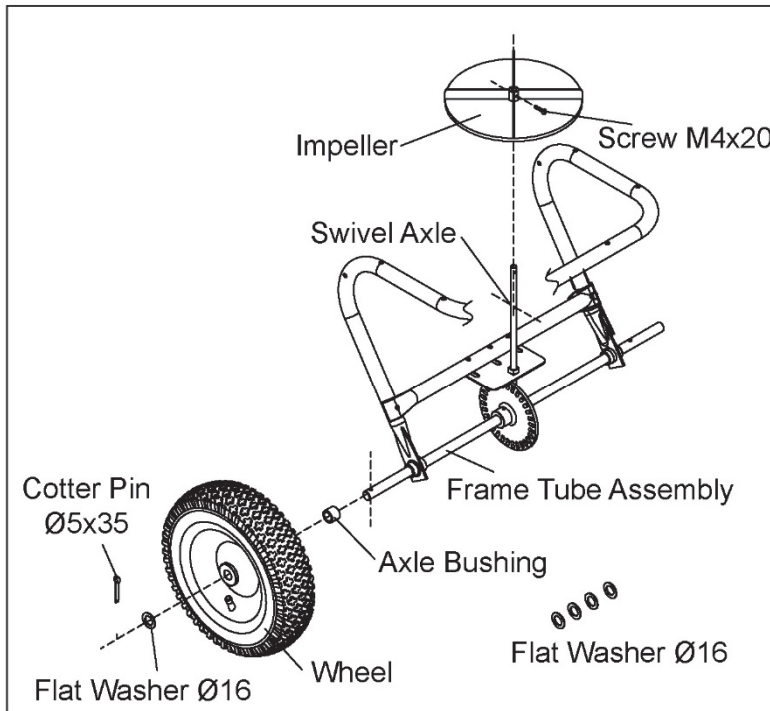
Technical specifications on the tow-behind spreader are provided in the “Specifications” section of this manual.

Component Parts

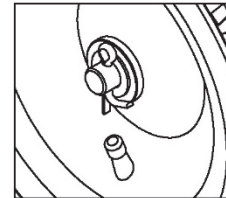


Assembly Instructions

STEP 1: Remove Screw M4x20 from swivel axle, then insert impeller to the swivel axle (bulge face up) by reinstalling Screw M4x20. Assemble the wheel to the frame tube assembly. Fix 1pc axle bushing to the wheel axle at one side of the frame tube, insert the wheel to the axle; fix the wheel with 1pc Flat Washer $\text{\O}16$ and 1pc Cotter Pin $\text{\O}5 \times 35$. (There are 4 extra pieces of $\text{\O}16$ flat washer for adjusting the space between wheel and axle bushing.)

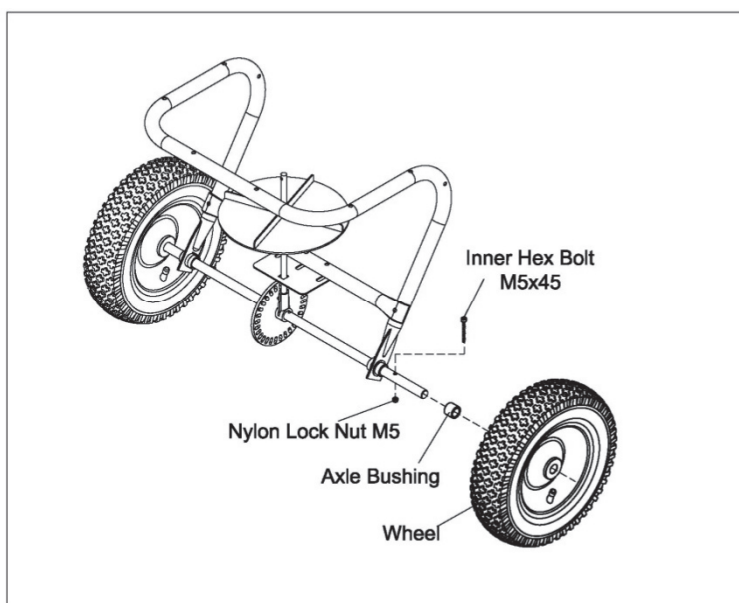


Picture 1

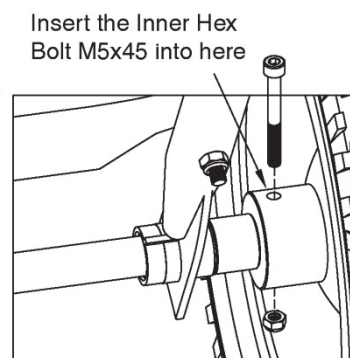


Picture 2

STEP 2: Assemble the wheel on the other side of the frame tube assembly. Insert one axle bushing before assemble the wheel to the axle. Fix the wheel by using one inner hex bolt M5x45 and nylon lock nut M5. Make sure the hole on the wheel will be aligning at the hole on the wheel axle, and then secure the wheel by inserting the Inner hex bolt to the holes.

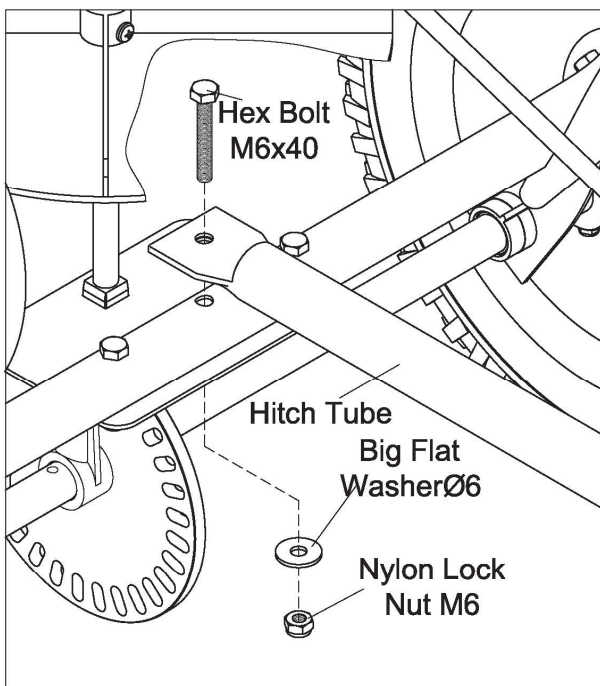


Picture 3

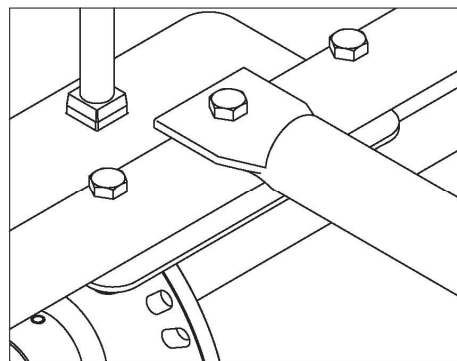


Picture 4

STEP 3: Assemble the hitch tube to the middle of the frame tube assembly by using a hex bolt M6x40. Secure the bolt with a big flat washer Ø6 and nylon lock nut M6.

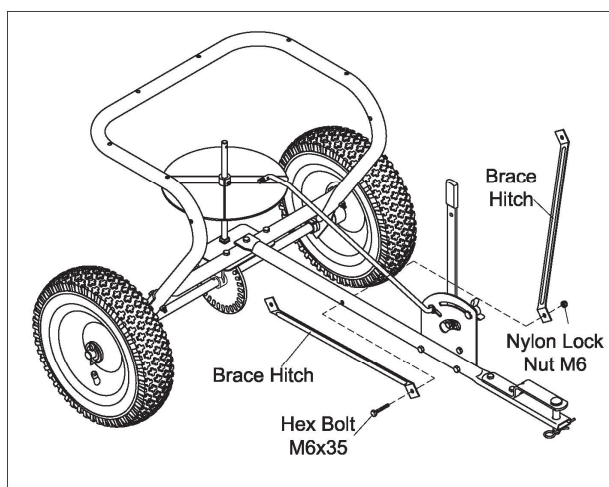


Picture 5

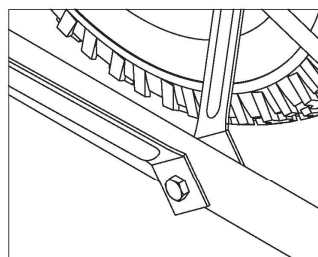


Picture 6

STEP 4: Assemble one end of brace hitches to the middle of the hitch tube, secure with a hex bolt M6x35 and nylon lock nut M6.

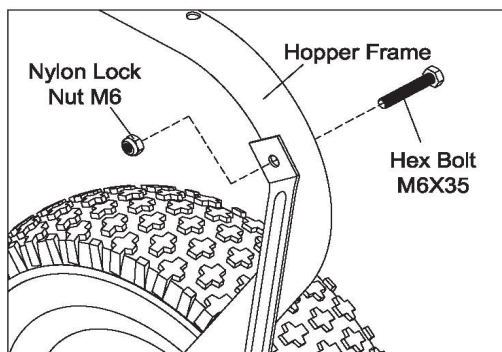


Picture 7

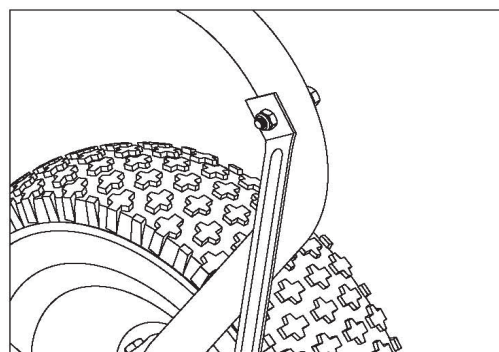


Picture 8

STEP 5: Assemble the another end of the brace hitches to the inside of frame tube assembly (Hopper Frame) by using a hex bolt M6x35 and nylon lock nut M6

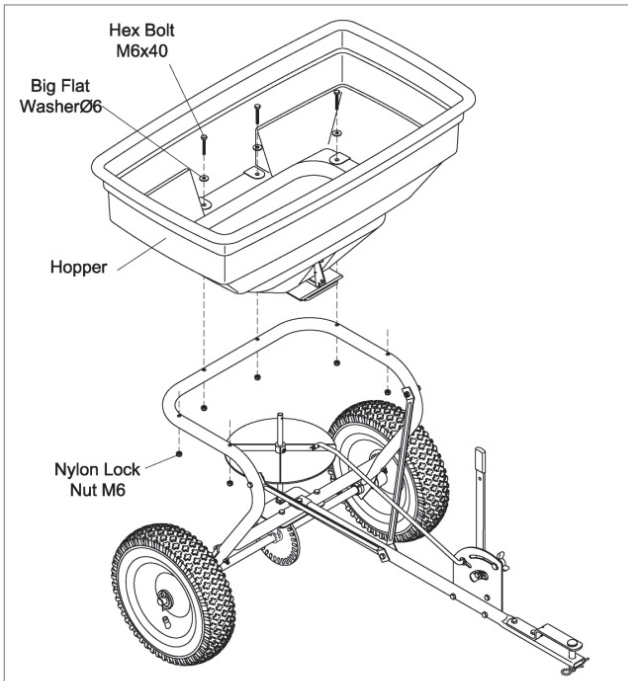


Picture 9

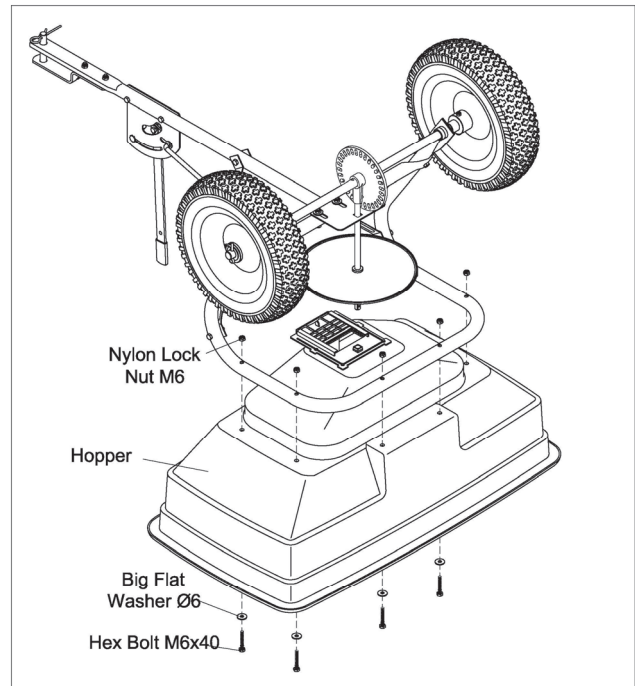


Picture 10

STEP 6: Assemble the hopper to the frame tube assembly, make sure the six holes on hopper are align with the holes hopper frame. Fix the hopper to the frame using 6 sets of hex bolt M6x40, big flat washer Ø6 and nylon lock nut M6.

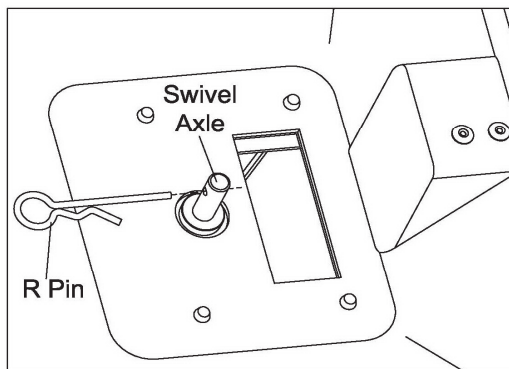


Picture 11

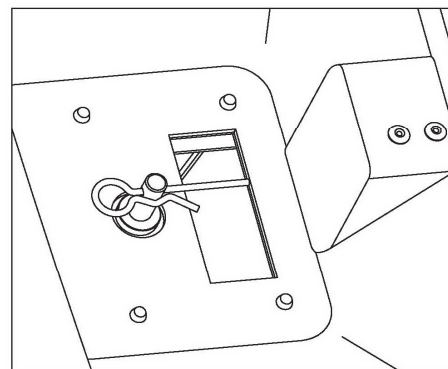


picture 12

STEP 7: Assemble the R Pin to the hole of Swivel Axle in the hopper.

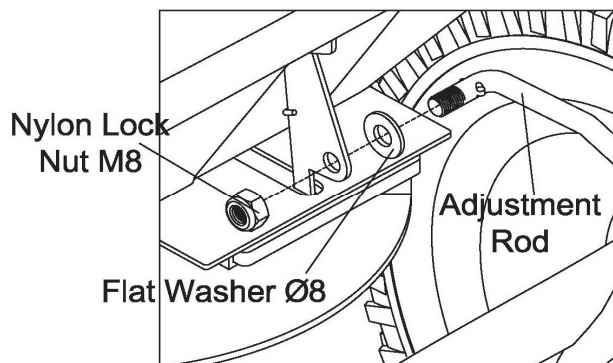


Picture 13

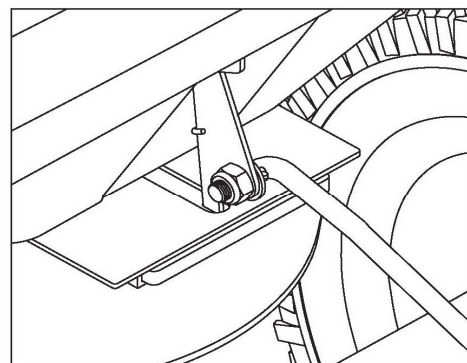


Picture 14

STEP 8: Assemble the adjustment rod to the bottom of the hopper. Slip a flat washer Ø8 over the end of the adjustment rod, then insert the adjustment rod into the hole at bottom of hopper and secure the adjustment rod with a nylon lock nut M8.

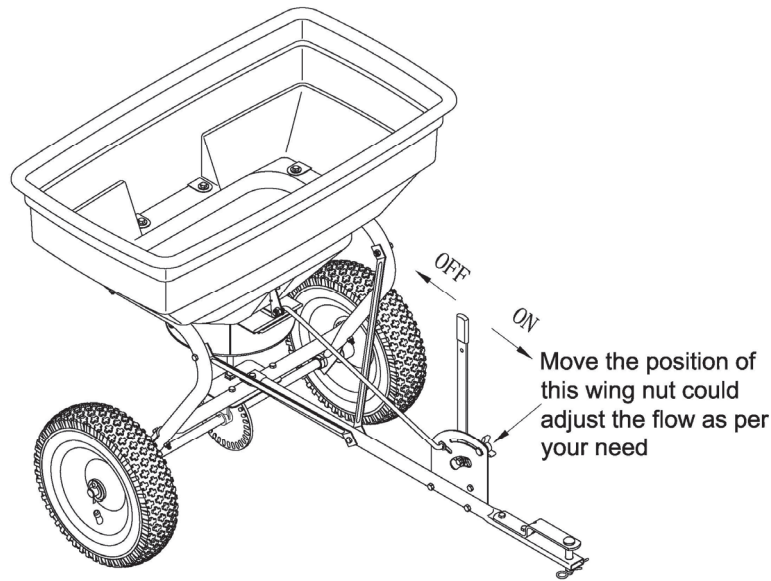


Picture 15



Picture 16

STEP 9: Before operating the tow behind spreader make sure all hardware is securely tighten.



SPECIFICATION
Capacity: 125LB / 60L
Dimension of Hopper: 29-1/2in.x16-1/2in.x13-2/5in. (75x42x34cm)
Length of Tow Bar: 31-7/8in. (81cm)
Overall Size: 41-1/2in.x29-1/2in.x29-1/2in. (105.5x75x75cm)
Wheel Diameter: 12in. (31cm)
Wheel Width: 3in. (8cm)

Maintenance and Storage

MAINTENANCE

- After each use clean material out of hopper.
- Rinse/dry inside and outside of the spreader after each use.
- Before operating make sure the tires have the RECOMMENDED TIRE PRESSURE.
- Periodically check all fasteners for tightness.
- Annually clean and lightly lubricate parts.
- Use a glossy enamel spray paint to touch up scratched or worn painted metal surfaces.
- Never exceed load capacity rating of 125lbs it will damage the spreader.

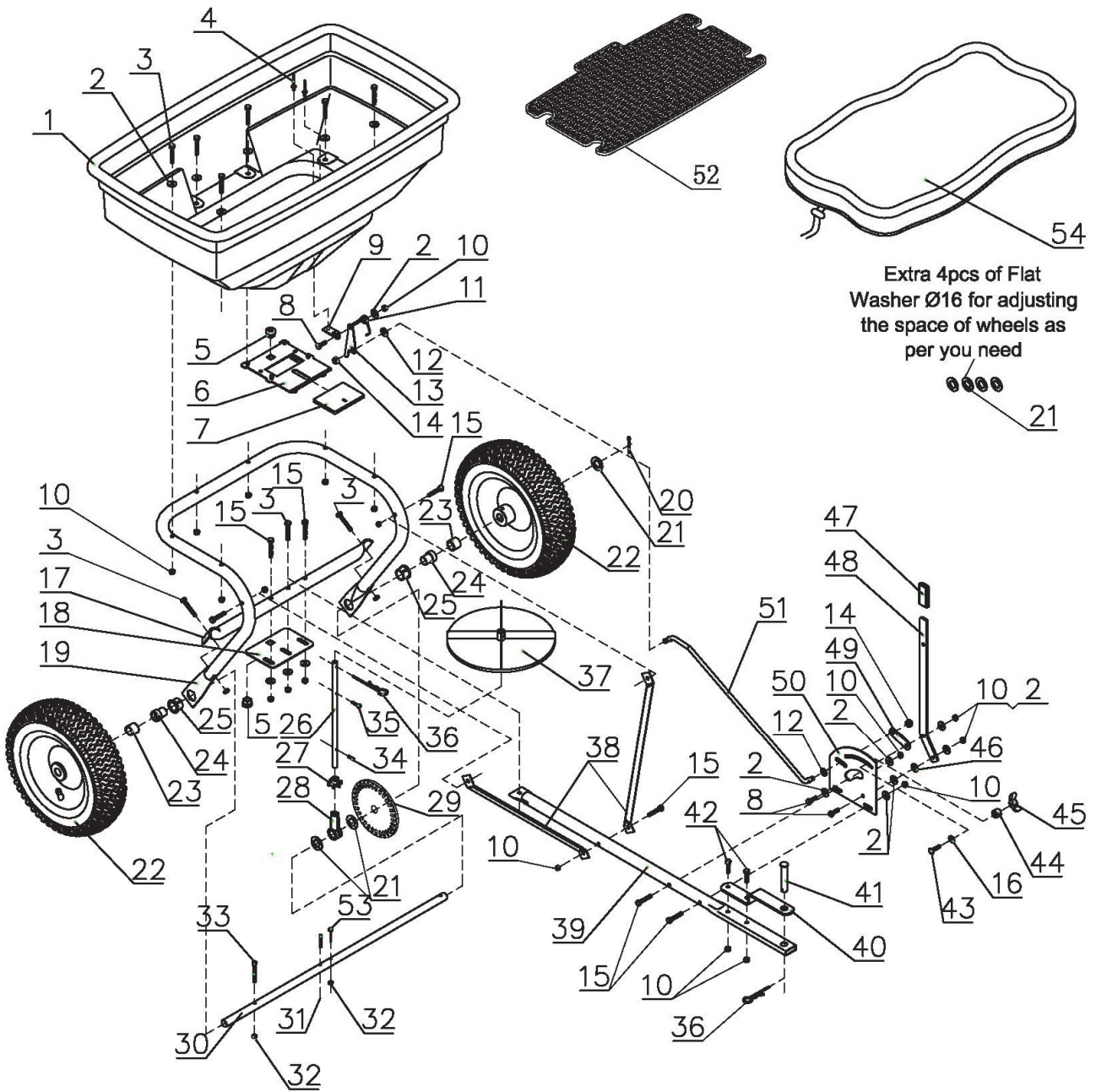
IMPORTANT:

If a part needs replacement, only use parts that meet the manufacturer's specifications. Replacement parts that do not meet specifications may result in a safety hazard or poor operations.

STORAGE

- Never allow material to remain in the hopper for extended periods of time.
- Before storing make sure the spreader is clean and dry for years of trouble free service.
- Store indoors or protected area during severe weather and winter months.

PARTS DRAWING



PARTS LIST

Ref#	Drawing No.	Description	Qty
1	N512-00020	Hopper Assembly	1
2	9302-06000-DG	Big Flat Washer Ø6	16
3	9101-06040-DG	Hex Bolt M6x40	9
4	9504-05010	Rivet Ø5x10	2
5	N512-00009	Swivel Axle Bushing	2
6	N512-00021	Fixed Adjustable Plate	1
7	N512-00022	Active Adjustable Plate	1
8	9101-06020-DG	Hex Bolt M6x20	3
9	N512-00023-DG	Base for Torsion Spring	1
10	9206-06000-DG	Nylon Lock Nut M6	21
11	N512-00025-DG	Torsion Spring	1
12	9301-08000-DG	Flat Washer Ø8	2
13	N512-00024-DG	Fix Plate for Connecting Rod	1
14	9206-08000-DG	Nylon Lock Nut M8	2
15	9101-06035-DG	Hex Bolt M6x35	7
16	9315-08000-DG	Teeth Lock Washer Ø8	1
17	N512-00002	Crossover Tube	1
18	N512-00008-DG	Swivel Axle Fix Plate	1
19	N512-00001	Frame Tube Assembly	1
20	9404-05035-DG	Cotter Pin Ø5x35	1
21	9301-16000-DG	Flat Washer Ø16	7
22	N570-00020	Pneumatic Wheel	2
23	E170-00010-DG	Wheel Axle Bushing	2
24	N570-00018	Inner Axle Bushing	2
25	N570-00011	Outer Axle Bushing	2
26	N512-00006-DG	Swivel Axle	1
27	N512-00007	Pinion Gear	1
28	N512-00019	Swivel Axle Base	1
29	N512-00018	Gear (Driver)	1
30	N512-00017-DG	Wheel Axle	1
31	9402-04030-FH	Pin Ø4x30	1
32	9206-05000-DG	Nylon Lock Nut M5	2
33	9105-05045-DG	Inner Hex Bolt M5x45	1
34	9402-03016-FH	Pin Ø3x16	1
35	9110-04020-DG	Screw M4x20	1

Ref#	Drawing No.	Description	Qty
36	N512-00026-DG	R Pin	2
37	N512-00010	Impeller	1
38	N512-00004	Brace Hitch	2
39	N512-00003	Hitch Tube	1
40	N512-00005	Hitch Bracket	1
41	N390-00001-DG	Pin	1
42	9101-06025-DG	Hex Bolt M6x25	2
43	9114-06025-DG	Carriage Bolt M6x25	1
44	N510-00016	Spacer	1
45	N510-00019	Wing Nut	1
46	C130-00004	Nylon washer	1
47	N512-00014	Handle Grip	1
48	N512-00012	Adjustable Handle	1
49	N512-00027-DG	Connect Rod	1
50	N575-00006-DG	Gauge Plate	1
51	N512-00013-DG	Adjustment Rod	1
52	N575-00003	Hopper Screen	1
53	9101-05040-DG	Hex Bolt M5x40	1
54	N514-00007	Rain Cover	1

Limited Warranty

Warranty

For one year from the date of purchase YTL International will replace for the original purchaser, or repair the spreader. The warranty will not apply to any unit which was not assembled correctly, misused, overloaded or which has been used or operated contrary to our instructions, or which has been repaired or altered by anyone other than an authorized representative.

Warranty Exclusions

This warranty does not cover cosmetic defects such as paint, decals or wear items such as tires. This warranty will not cover failures or problems due to acts of God, or events or forces beyond the control of the manufacturer.

Normal Wear Exclusion

The spreader needs periodic service to perform well. This warranty does not cover repair when normal use has exhausted the life of a part or the equipment as a whole.

Installation, Use and Maintenance Exclusion

This warranty will not apply to parts and/or labor if the push spreader has been misused, neglected, involved in an accident, abused, loaded beyond its limits, modified or assembled incorrectly. Normal maintenance is not covered under this warranty.

Limits of Implied Warranty and Consequential Damage Exclusion

YTL International disclaims any obligation to cover any loss of time, use of this product, freight, or any incidental or consequential claim by anyone from using this spreader. THIS WARRANTY IS IN LIEU OF ALL OTHER WARRANTIES, EXPRESS OR IMPLIED, INCLUDING WARRANTIES OF MERCHANTABILITY OR FITNESS FOR A PARTICULAR.

An exchange unit will be subject to the original warranty. The length of the warranty governing the exchanged unit will have the date as the purchase date of the original unit. This warranty gives you certain legal rights which may change from state to state. Your state may also have other rights you may be entitled to that are not listed within this warranty.

Contact Information

YTL International

17517 Fabrica Way, Suite H

Cerritos, CA 90703

Phone: (888) 723-6534

Phone: (562) 404-8016

Fax: (562) 404-8013

Email: parts@ytlinternational.com