

DR[®] K10 RAPIDFIRE™ LOG SPLITTER

SAFETY & OPERATING INSTRUCTIONS



Model:
K10

Serial No. _____

Order No. _____

DR Power Equipment
Toll-free phone: 1-800-DR-OWNER (376-9637)
Website: www.DRpower.com

WARNING

Read and understand this manual and all instructions before operating the DR K10 RAPIDFIRE LOG SPLITTER.

Table of Contents

Chapter 1: General Safety Rules.....	3
Chapter 2: Setting Up the DR K10 RAPIDFIRE LOG SPLITTER.....	7
Chapter 3: Operating the DR K10 RAPIDFIRE LOG SPLITTER	9
Chapter 4: Maintaining the DR K10 RAPIDFIRE LOG SPLITTER	12
Chapter 5: Troubleshooting	16
Chapter 6: Parts Lists and Schematic Diagrams.....	18

Conventions used in this manual

WARNING

This indicates a hazardous situation, which, if not avoided, could result in death or serious injury.

CAUTION

This indicates a hazardous situation, which, if not avoided, could result in minor or moderate injury.

NOTICE

This information is important in the proper use of your machine. Failure to follow this instruction could result in damage to your machine or property.

Serial Number and Order Number

A Serial Number is used to identify your machine and is located on the Serial Number Label on your machine. An Order Number is used to check and maintain your order history and is located on your packing slip. For your convenience and ready reference, enter the Serial Number and Order Number in the space provided on the front cover of this manual.

Additional Information and Potential Changes

DR Power Equipment reserves the right to discontinue, change, and improve its products at any time without notice or obligation to the purchaser. The descriptions and specifications contained in this manual were in effect at printing. Equipment described within this manual may be optional. Some illustrations may not be applicable to your machine.

California Proposition 65

 **WARNING**
CANCER AND REPRODUCTIVE HARM - www.P65Warnings.ca.gov.

Chapter 1: General Safety Rules


WARNING

Read this Safety & Operating Instructions manual before you use the DR RAPIDFIRE LOG SPLITTER. Become familiar with the operation and service recommendations to ensure the best performance from your machine. If you have any questions or need assistance, please contact us at www.DRpower.com or call toll-free 1-800-DR-OWNER (376-9637) and one of our Technical Support Representatives will be happy to help you.

Labels


Your DR K10 RAPIDFIRE LOG SPLITTER carries prominent labels as reminders for its proper and safe use. Shown below are copies of all the Safety and Information labels that appear on the equipment. Take a moment to study them and make a note of their location on your LOG SPLITTER as you set up and before you operate the unit. Replace damaged or missing safety and information labels immediately.

RapidFire™ LOG SPLITTER

 **AUTO-RETRACT**

OPERATING INSTRUCTIONS

1. Read Safety & Operating Instruction manual before starting.
2. Prepare machine: Start motor using switch. If electrical breaker on motor trips, shut off motor power switch and allow to cool prior to pressing reset button and restarting motor.
3. Grab log by sides and place onto rail, against wedge.
4. Pull/Push and hold safety interlock handle.
5. **RAPIDLY** push control handle to SPLIT position to initiate cycle. Hold the control handle until the log has split, release the control handle and ram will retract. Release the Safety interlock handle to re-engage the safety interlock handle.
6. Ram automatically retracts when control handle is released. To retract ram before end of stroke, return lever to AUTO-RETRACT position.

 **SPLIT**

⚠ WARNING!

AVOID SERIOUS INJURY OR DEATH

Read Safety & Operating Instruction manual completely.

Keep hands and all body parts away from splitting wedge, ram, partially split wood, and moving parts.

Rotating parts inside can cause severe injury.

Do NOT start or operate machine without all guards in place.

Shut off the engine and wait 30 seconds for the flywheels to stop spinning to remove any stuck pieces of wood from the wedge, or before performing any actions around the ram or rack of the machine.

Wait for the flywheels to stop spinning before servicing.

Hold logs by the sides, not the ends or top while loading.

Only one person is permitted to load logs and operate the log splitter.

Do NOT use if cord is damaged. Use GFI adapter or electrical outlet. Use only approved extension cords.

Stay in the manufacturer's designated operator zone.

Never operate log splitter under the influence of alcohol or drugs.

⚠ CAUTION!

Ram automatically retracts when the engagement handle is disengaged or released

Keep hands and clothing clear of retracting ram

Operate log splitter on flat, level, dry ground. Stay off slopes and slippery surfaces

Never allow children or untrained adults to use log splitter

Keep bystanders, children, and helpers at least 25 ft. away

Wear safety glasses, tight fitting work gloves without loose straps or drawstrings, and safety shoes

Never leave log splitter unattended during operation

Split wood in the direction of the grain only

Inspect electric cord before use. Keep cord away from water, heat, and sharp objects.

DR POWER EQUIPMENT
1-800-DR-OWNER • www.DRpower.com A0000103520_REV B

#A0000103520

⚠ WARNING

PINCH POINT

#25044

Protecting Yourself and Those Around You

WARNING

This is a high-powered machine, with moving parts operating with high energy. You must operate the machine safely. Unsafe operation can create a number of hazards for you, as well as anyone else in the nearby area. Always take the following precautions when using this machine:

- Keep in mind that the operator or user is responsible for accidents or hazards occurring to other people, their property, and themselves.
 - Always wear protective goggles or safety glasses with side shields while using the Log Splitter to protect your eyes from possible thrown debris.
 - Avoid wearing loose clothing or jewelry, which can catch on moving parts.
 - We recommend wearing gloves while using the Log Splitter. Be sure your gloves fit properly and do not have loose cuffs or drawstrings.
 - Wear shoes with non-slip treads when using your Log Splitter. If you have safety shoes, we recommend wearing them. Do not use the machine while barefoot or wearing open toed sandals.
 - Wear long pants while operating the Log Splitter.
 - Use ear protectors or ear plugs rated for at least 20 dba to protect your hearing.
 - Keep bystanders at least 50 feet away from your work area at all times. Stop the motor when another person or pet approaches.
-

Safety for Children and Pets

WARNING

Tragic accidents can occur if the operator is not alert to the presence of children and pets. Children are often attracted to the machine and the splitting activity. *Never* assume that children will remain where you last saw them. Always follow these precautions:

- Keep children and pets at least 50 feet from the working area and ensure they are under the watchful care of a responsible adult.
 - Be alert and turn the machine off if children or pets enter the work area.
 - Never allow children to operate the Log Splitter.
-

Safety with Electric - Powered Machines

WARNING

Never overlook the hazards of electricity. Always follow these precautions:

- Never open the switch box or motor cover. Never attempt any electrical repairs yourself. If in doubt, consult a qualified electrician, visit our website at www.DRpower.com or contact DR Power Equipment for toll-free support at: 1-800-dr-owner (376-9637) for help or information.
 - Never use an extension cord that is not rated for outdoor use.
 - Never operate the Log Splitter if there is an electrical hazard present.
 - Never operate the Log Splitter in wet conditions and always store under cover.
 - Never operate the Log Splitter with a damaged electrical cord or damaged extension cord.
 - Never pull on the electrical cord to move the machine.
 - Always grasp the electrical cord plug when unplugging the cord from the outlet; never pull the plug out by the cord. Make sure your fingers do not touch the metal prongs when plugging or unplugging.
 - Never operate the Log Splitter unless the electrical cord is plugged into a properly grounded GFCI protected electrical outlet, which supplies 110-120v power, and is protected by a 20-amp circuit breaker.
 - Never tamper with safety devices. Check their proper operation regularly.
 - If you are using an extension cord, keep the connection between the electrical cord and the extension cord well away from any water.
 - Never use an extension cord longer than 25 feet and smaller than 12 awg in diameter, or longer than 50 feet and smaller than 10 awg in diameter; the cord will produce a voltage drop that will prevent the motor from supplying full power and may cause damage to the motor. Use of a smaller diameter (larger awg number) extension cord could result in melting of the insulation or even create a fire.
 - Always keep the electrical cord and/or extension cord away from excessive heat, oil, and sharp objects.
-

General Safety

WARNING

Operating this Log Splitter safely is necessary to prevent or minimize the risk of death or serious injury. Unsafe operation can create a number of hazards for you. Always take the following precautions when operating this Log Splitter:

- Your Log Splitter is a powerful tool, not a plaything. Exercise extreme caution at all times. The machine is designed to split logs. Do not use it for any other purpose.
- Know how to stop the Log Splitter quickly; see “stopping the motor” in chapter 3.
- Never operate your unit on a slippery, wet, muddy, or icy surface. Exercise caution to avoid slipping or falling.
- See manufacturer’s instructions for proper operation and installation of accessories. Only use accessories approved by DR Power Equipment.
- Never use the machine without ensuring that all guards and shields are in place.
- Never, under any conditions, remove, bend, cut, fit, weld, or otherwise alter standard parts on the Log Splitter. This includes all shields and guards. Modifications to your machine could cause personal injuries and property damage and will void your warranty.
- Allow only one person to operate the Log Splitter at any time. This includes placing the log on the beam.
- If the machine should start making an unusual noise or vibration, Shut off the Motor, Unplug the Power Cord. Wait 5 minutes for machine to cool down then inspect for damage. Vibration is generally a warning of trouble. Check for damaged parts and clean, repair and replace as necessary.
- Never tamper with safety devices. Check their proper operation regularly.
- Before performing any maintenance or inspection procedure on the Log Splitter, Shut off the Motor, Unplug the Power Cord. Wait 5 minutes for machine to cool down.
- Never allow people who are unfamiliar with these instructions to use the Log Splitter. Allow only responsible individuals who are familiar with these rules of safe operation to use your machine.
- Never overload or attempt to split logs beyond the recommendations listed in this manual. Personal injury or damage to the machine could result.
- While using the Log Splitter, don't hurry or take things for granted. When in doubt about the equipment or your surroundings stop the machine and take the time to look things over.
- Never operate the machine when under the influence of alcohol, drugs, or medication.
- Use the machine only in daylight.
- Stay alert for hidden hazards or traffic.
- Keep all nuts and bolts tight and keep the equipment in good operating condition.

A Note to All Users

No list of warnings and cautions can be all-inclusive. If situations occur that are not covered by this manual, the operator must apply common sense and operate this DR K10 RAPIDFIRE LOG SPLITTER in a safe manner. Contact us at www.DRpower.com or call 1-800-DR-OWNER (376-9637) for assistance.

Chapter 2: Setting Up the DR K10 RAPIDFIRE LOG SPLITTER

It may be helpful to familiarize yourself with the controls and features of your DR K10 RAPIDFIRE LOG SPLITTER as shown in Figure 1 before beginning these procedures. If you have any questions at all, please feel free to contact us at www.DRpower.com.

DR K10 RAPIDFIRE LOG SPLITTER Controls and Features

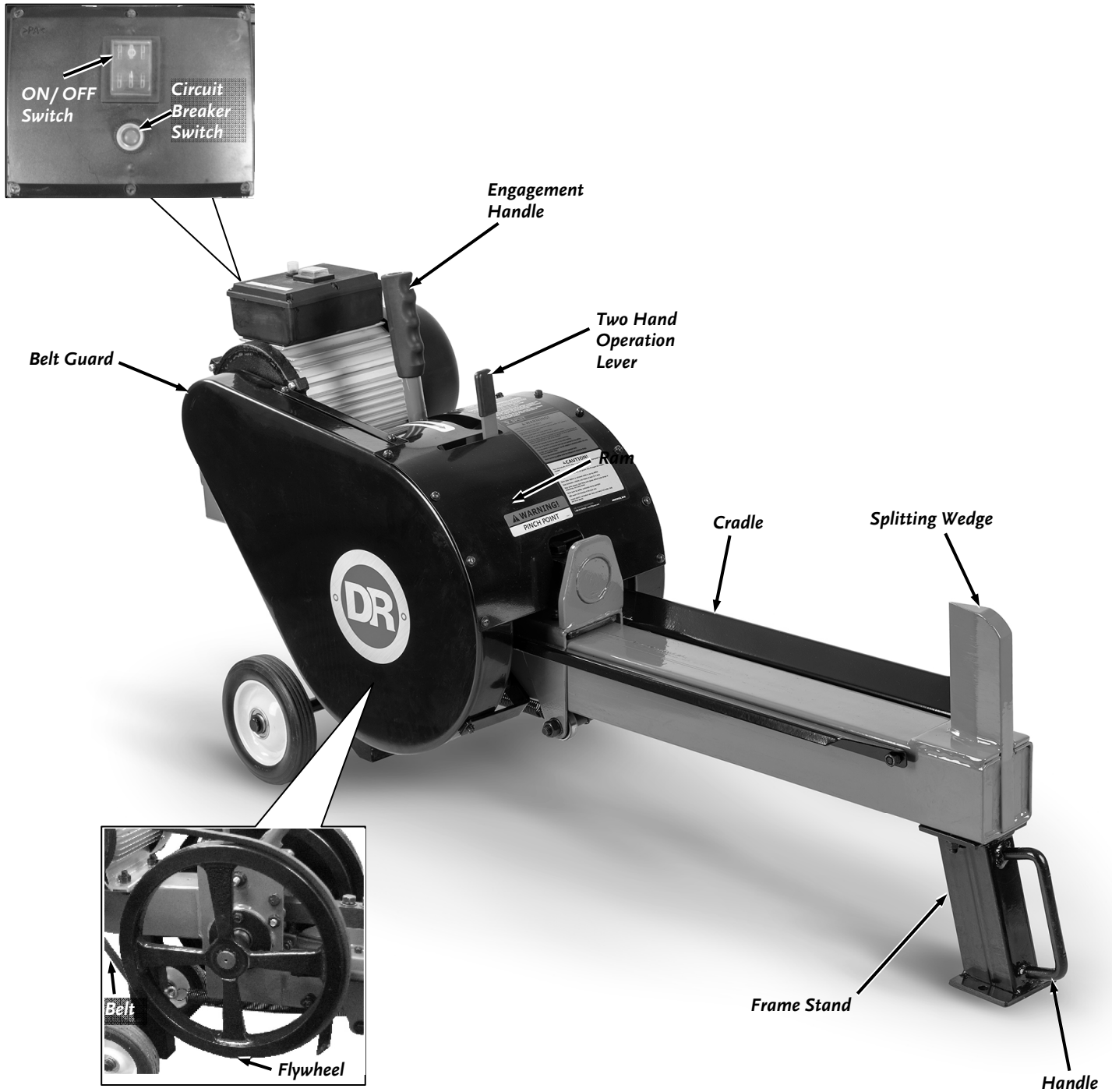


Figure 1

Specifications

HP	2
Output Torque	.025 in-lbs @ Full Load
Voltage	110
Full Load Current (Amps)	14.5
Power (Watts)	1060
Hertz	60
Phase	1
Overload Protection	Thermal Breaker
Outlet Cord	6'
Frame Gauge	3mm
Belt Size	A-1180
Flywheel Weight (lbs.)	13
Flywheel RPM	490
Maximum Log Length	16"
Maximum Log Diameter*	12"
Cycle Time (sec.)	1
Splitting Ability	Out splits 10 ton Hydraulic
Wedge Height	5"
Wheel size	6"
Machine Height	24.5"
Machine Length	49"
Machine Width	11.875"
Weight	132

*The diameter listed is indicative of the maximum suggested size. A small log can be difficult to split when it contains knots or a particularly tough fiber. On the other hand, it may not be difficult to split logs with regular fibers even if its diameter exceeds the maximum indicated above.

Assembling the DR K10 RAPIDFIRE LOG SPLITTER

Tools needed:

- 14mm Wrench

Note: The Frame Stand comes on the machine but needs to be rotated 180 degrees to be in the operating orientation.

1. Use a 14mm Wrench to remove the two Nuts and Lock Washers that hold the Frame Stand onto the Frame (**Figure 2**).
2. Remove the Frame Stand and rotate it 180 degrees. Reinstall it with the handle on the outside using the Nuts and Lock Washers removed in step 1 (**Figure 3**).

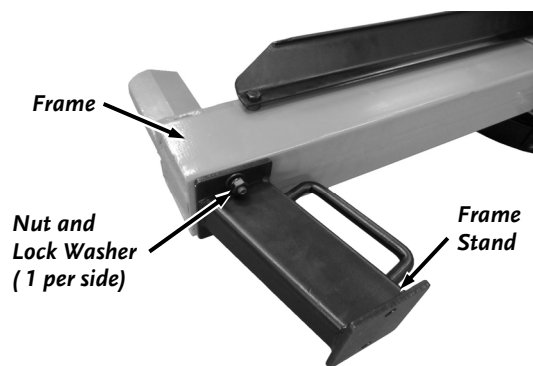


Figure 2

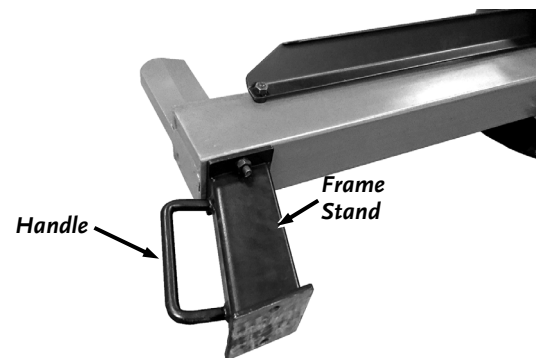


Figure 3

Chapter 3: Operating the DR K10 RAPIDFIRE LOG SPLITTER

It may be helpful to better familiarize yourself with the features of your Log Splitter by reviewing **Figure 1** in Chapter 2 before beginning the steps outlined in this chapter.

WARNING

- Read and understand all instructions, safety precautions, and/or warnings listed in “Chapter 1 General Safety Rules” before operating this DR K10 RAPIDFIRE LOG SPLITTER. If any doubt or question arises about the correct or safe method of performing anything found in this manual, please contact our Customer Service Representatives at our toll free number: 1-800-DR-OWNER (376-9637).
- When operating the Log Splitter, make sure you are standing in the safe operating area (OPERATOR ZONE) as shown in **Figure 4**. You must stay in the safe operating areas at all times when the ram is in motion (whether extending or retracting). Never place any part of your body into a position that causes an unsafe operating condition.

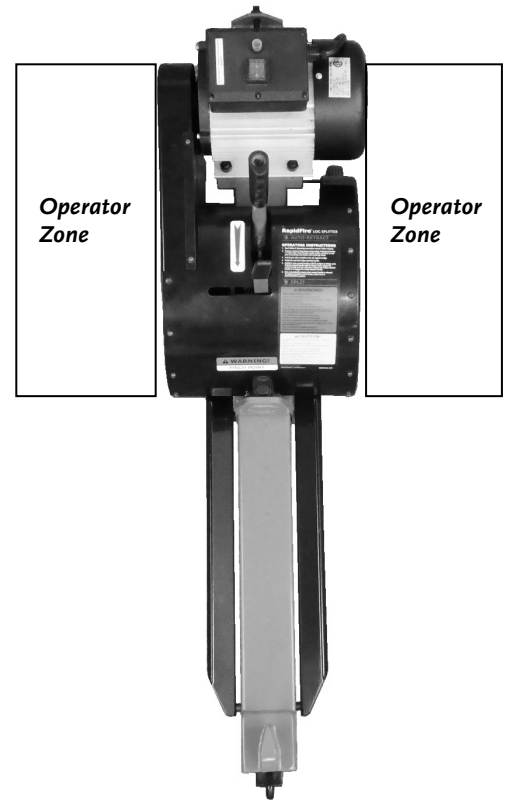


Figure 4

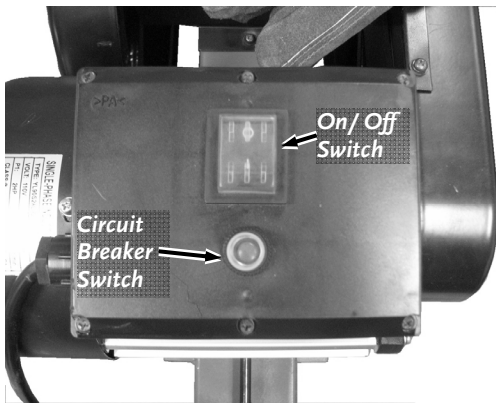


Figure 5

K 10 Operation

Refer to the “Safety with Electric - Powered Machines” section in Chapter 1 before using the Electric Motor for safety warnings and specific power and connection requirements.

Starting the Motor

1. Position your Log Splitter on a flat, dry surface and chock the Wheels or screw down the Frame Stand to prevent the Splitter from moving during use.
2. Make sure the Log Splitter is plugged into a properly grounded 20 Amp, GFCI protected outlet.
3. Push the red Toggle Switch to the on position (**Figure 5**).

Stopping the Motor

1. Push the red Toggle Switch to the off position to shut the Motor off (**Figure 5**).

Note: Unplug the Power Cord when not using the Splitter.

Resetting the Circuit Breaker

If the Motor will not run when the power Switch is turned on and power is connected to the machine, the Circuit Breaker Switch may need resetting. Read all instructions in the “Safety with Electric - Powered Machines” section in Chapter 1 to eliminate the typical causes for Circuit Breaker activation.

1. Push the Circuit Breaker Switch in to reset (**Figure 5**).



Figure 6

Splitting Logs

Note: All logs should be no longer than 16". Refer to the following photos for the correct and incorrect methods of splitting logs. Never split a log using an incorrect or unsafe method.



Figure 7

! WARNING

- Do not place your hands on the ends of the log when loading the Log Splitter. This is a very UNSAFE method and could result in injury to your hands (**Figure 6**).
- Do not reach or step across the beam while the Log Splitter is running. This is a very UNSAFE method which could cause personal injury or even death.



Figure 8

! CAUTION

- Never attempt to split wood across the grain. The Log Splitter was not designed for cross-grain splitting. Doing so could damage the Log Splitter and may cause personal injury (**Figure 7**).
- Make sure both ends of the log you are splitting are cut as square as possible. This will prevent the log from sliding out of position while under pressure (**Figure 8**).

NOTICE

THE RAPIDFIRE LOG SPLITTER OPERATES DIFFERENTLY THAN A HYDRAULIC SPLITTER. NOT OPERATING THE MACHINE PROPERLY WILL RESULT IN DAMAGE TO THE MACHINE. ALWAYS FOLLOW THESE NOTICES:

- Do not be timid. A rapid movement of the Engagement Handle is necessary for the Rack and Pinion to engage and disengage fully without damage.
- The Engagement Handle should never be stopped in any location between the fully forward or fully backward positions.
- Do not hold the Handle in the forward position when the Ram stops moving forward. Always pull the Engagement Handle RAPIDLY to the back (Auto-Retract) position as soon as the Log is split or when the Ram is at the end of the stroke or when the Ram stops moving forward due to a tough log.

1. Place the log on the Log Splitter. Grasp the log on the sides near the middle of the block (**Figure 9**). Center the log, side-to-side, on the rail of the Log Splitter, making sure that one end is against the Splitting Wedge.

CAUTION

- The engagement Handle must be held fully in the Split Position against the hard stop when splitting. Failure to do so may result in kickback of the Handle.
2. With one hand, actuate and hold the Two Hand Operation Handle towards you, then **RAPIDLY** actuate the Engagement Handle fully towards the Motor until it contacts the hard stop and hold firmly until the Ram stops (**Figure 10**).
 3. **IMMEDIATELY AFTER** the log is split, actuate and hold the Engagement Handle to the Auto-Retract position to allow the Ram to return. If the Ram stops before the end of the stroke while splitting a tough log, quickly actuate the Engagement Handle back to the Auto-Retract position.

Splitting Tough Logs

If the Ram stops before the end of the stroke while splitting a tough Log, quickly actuate the Engagement Handle back to the Auto-Retract position. Let the Ram return and allow the Flywheels to gain momentum for another full power split.

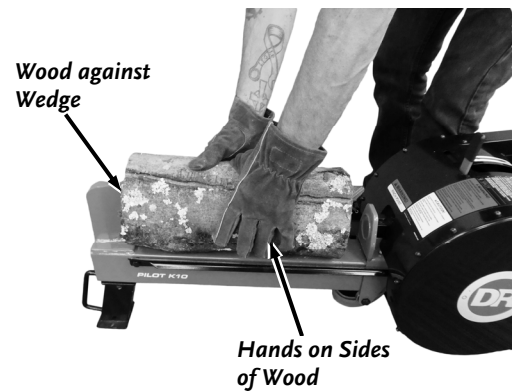


Figure 9

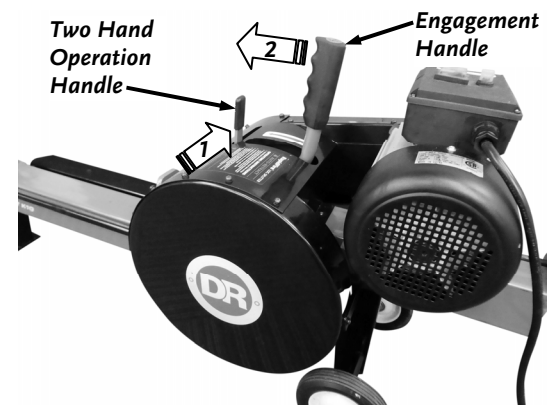


Figure 10

Chapter 4: Maintaining the DR K10 RAPIDFIRE LOG SPLITTER

Regular maintenance is the way to ensure the best performance and long life of your machine. Please refer to this manual for proper maintenance procedures.

⚠ WARNING

Before performing any maintenance procedure or inspection, stop the motor, unplug the power cord and wait five (5) minutes to allow all parts to cool.

Regular Maintenance Checklist

PROCEDURE	BEFORE EACH USE	EVERY 5 HOURS	EVERY 25 HOURS
Check General Equipment Condition	▲		
Perform Rail Maintenance	▲		
Check Belt	▲		
Check the condition of the electrical cord.	▲		
Grease Rack		▲	
Clean Motor Exterior and Cooling Fins			▲

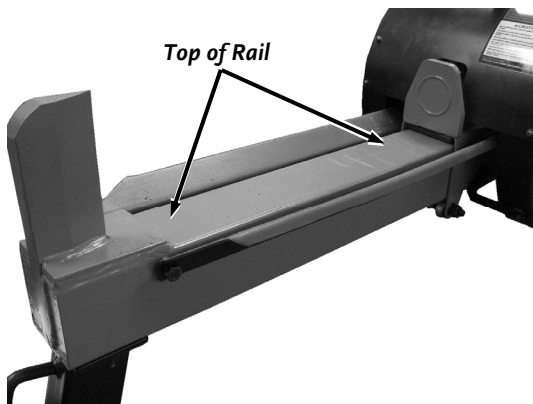


Figure 11

Lubrication

All Bearings of your Splitter are sealed units and should have sufficient lubricant to last the life of your machine with normal use. Perform machine lubrication per the following instructions.

Rail Maintenance

Between each use of the LOG SPLITTER, we recommend removing any debris caught on the Rail or Ram and applying a rust preventative (Fluid Film or equivalent) to any bare metal areas on the top of the Rail (**Figure 11**). This will assure the smoothest return action of the Ram.

Greasing the Rack

Note: It is important to grease the Rack every 5 hours for proper operation.

Tools and Supplies needed:

- General Purpose Grease
 - Clean Rags
 - Phillips Screwdriver
1. Use a Phillips Screwdriver to remove the 11 Guard Screws, Washers and Lock Washers that secure the Center Guard (**Figure 12**).
 2. Remove the Guard Screws, Washers and Lock Washers that secure the Flywheel and Belt Guard.

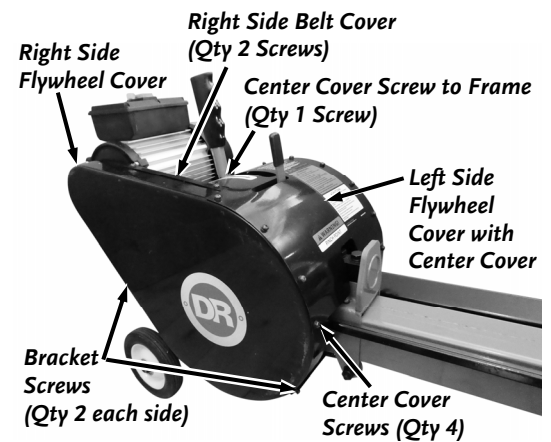


Figure 12

3. Disconnect the Return Spring from the Eye Bolt on the Frame (**Figure 13**).

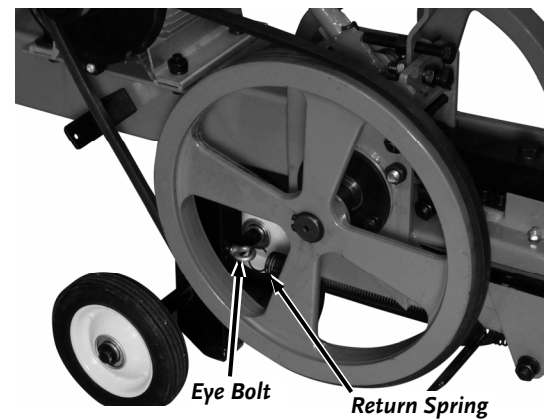


Figure 13

4. Pull the Rack out and grease the Rack Teeth, top side of the Rack and the Pinion (**Figure 14**).
5. Push the Rack back in and reinstall the Return Spring to the Eye Bolt when finished greasing.
6. Reinstall the Guards.

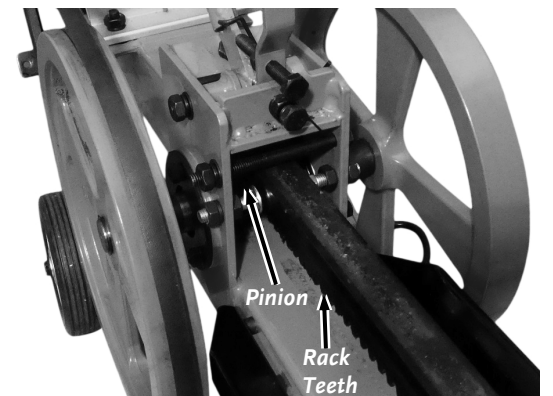


Figure 14

Adjusting and Replacing the Belt

Checking and Adjusting the Belt Tension

Tools and Supplies needed:

- Phillips Screwdriver
- 14mm Wrench
- 17 mm Wrench

1. Remove the Center Guard, Flywheel Guard, and Belt Guard (see “Greasing the Rack” in this Chapter).
2. Place a Straight Edge across the top of the belt (**Figure 15**).
3. Push on the top of the Belt with about 10 pounds of pressure. The Belt should deflect approximately 1/2" to 5/8". If the distance is not between 1/2" and 5/8", adjust per the following directions.
4. Loosen the Motor Hardware using a 14mm Wrench on the bolt and a 17mm Wrench on the nut (**Figure 16**).
5. Use a 17mm Wrench to turn the Tension Nut in against the Frame to tighten (if Belt is too loose) or out to loosen (if Belt is too tight) for the correct Belt tension.

Note: The Belt performs best with a slight amount of slack to allow the belt to slip on the pulley when the Wedge encounters a tough log. Too much tension may stall the Motor.

6. When the Belt is at the proper tension, tighten the Motor Hardware.
7. Reinstall the Guards.

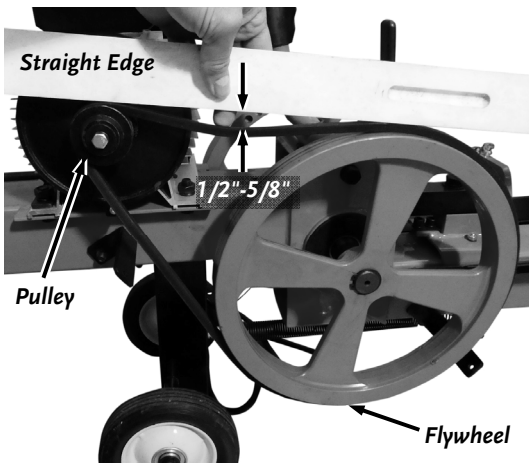


Figure 15

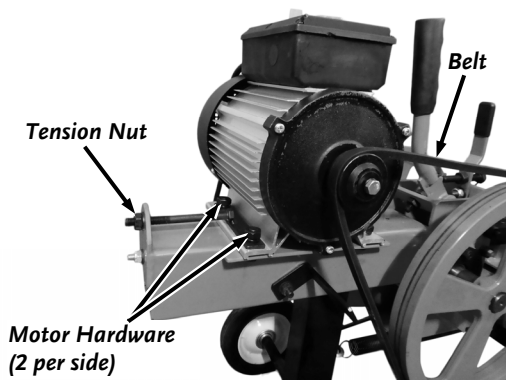


Figure 16

Replacing the Belt

Tools and Supplies needed:

- Phillips Screwdriver
- 14mm Wrench
- 17 mm Wrench
- DR Belt

1. Remove the Center Guard, Flywheel Guard, and Belt Guard (see “Greasing the Rack” in this Chapter).
2. Loosen the Motor Hardware using a 14mm Wrench on the bolt and a 17mm Wrench on the nut (**Figure 16**).
3. Use a 17mm Wrench to loosen the Tension Nut until the Belt can be easily removed.
4. Install a new Belt onto the Pulley and Flywheel (**Figure 15**).
5. Tighten the Tension Nut against the Frame and follow the steps in the “Checking and Adjusting the Belt Tension” section to set the Belt tension.
6. Tighten the Motor Hardware.
7. Reinstall the Guards.

Adjusting the Steel Bushing Over Center

Only perform this adjustment if your Engagement Handle is kicking back excessively when splitting a log. If you confirm that the Engagement handle is adjusted properly as shown in **Figure 17**, there may be another issue. If you have any questions, contact us at www.DRpower.com or call 1-800-DR-OWNER (376-9637) for assistance.

Tools needed:

- 14mm Wrench
- Two 17mm Wrenches
- Phillips Screwdriver

1. Remove the Center Guard, Flywheel Guard, and belt Guard (see “Greasing the Rack” in this Chapter).
2. Push the Two Hand Operation Lever to the side and move the Engagement Handle forward until it contacts the Vertical Adjustment Bolt (**Figure 17**).

Note: You May have to pull out on the Ram so that the Teeth on the Rack and Pinion line up.

3. Use a 17mm Wrench to loosen the Locking and Handle Retention Nuts on the Vertical Adjustment Bolt.

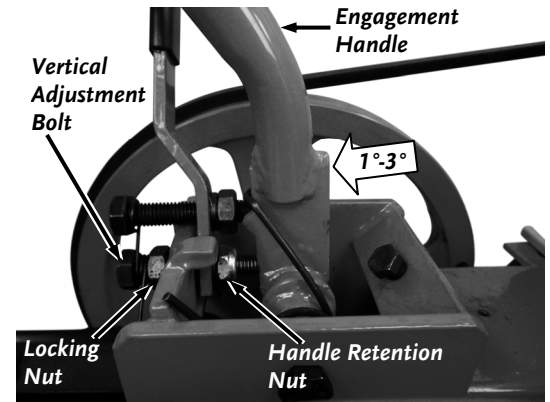


Figure 17

NOTICE

Do not adjust more than 1-1/4 revolutions when adjusting off center. Adjustments too far off center will not allow the Rack Teeth to engage fully and will cause damage to the Splitter.

4. Use a 14mm Wrench to adjust the Vertical Adjustment Bolt so the Engagement Handle is approximately 1 to 3 degrees off center towards the Vertical Adjustment Bolt.

NOTICE

The Engagement Handle must move just past center as it contacts the Vertical Adjustment Bolt. If it is at the center position, or off center in the wrong direction, the force of splitting a log will be transferred through the Engagement Handle and could cause injury.

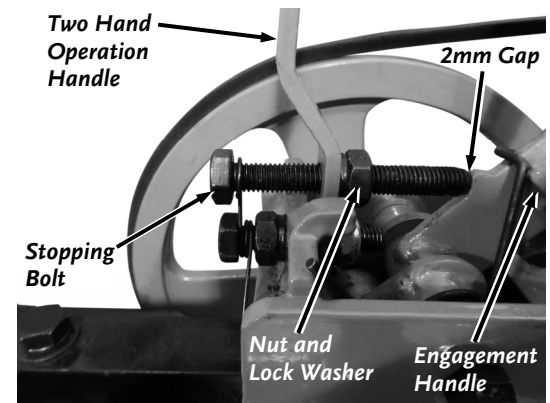


Figure 18

5. Use a 17mm Wrench to tighten the Locking Nut and Handle Retention Nut. Make sure the Two Hand Operation Handle is able to move freely and return to the locked position. If the Handle cannot move freely, loosen the Handle Retention Nut 1/4 rotation at a time until it can move freely.
6. Push the Engagement Handle all the way to the Return Position then back into the Split Position to confirm the Steel Bushing is moving just past center.
7. Check the gap at the end of the Stopping Bolt and the Engagement handle (**Figure 18**). The gap should be approximately 2mm. If the gap needs adjustment, hold the head of the Bolt using a 17mm Wrench and loosen the Nut using another 17mm Wrench. Adjust the Bolt as needed to correct the gap and retighten the Nut against the Two hand Operation Handle.
8. Reinstall the Guards.

When using the Splitter for the first time after this adjustment, split smaller diameter logs with no knots to verify that the adjustments are correct before trying larger diameter tougher logs.

If you have any questions please contact us at www.DRpower.com or call 1-800-DR-OWNER (376-9637) for assistance.

Chapter 5: Troubleshooting

Most problems are easy to fix. Consult the Troubleshooting Table below for common problems and their solutions. If you continue to experience problems, contact us at www.DRpower.com or call toll-free 1-800-DR-OWNER (376-9637) for support.

WARNING

Before performing any maintenance procedure or inspection, stop the electric motor, wait five minutes to allow all parts to cool. Disconnect the power cord from the source of Electricity.

Troubleshooting Table

SYMPTOM	POSSIBLE CAUSE
<i>The Motor does not run</i>	<ul style="list-style-type: none"> ⇒ Splitter unplugged; plug Splitter in. ⇒ Splitter Cord may be damaged; visit our website at www.DRPower.com or call 1-800-DR-OWNER (376-9637) for assistance. ⇒ The motor Reset has tripped; push the Reset Button. ⇒ If the above causes are not the problem, a circuit breaker might need to be reset; Reset Circuit Breaker. ⇒ If the Motor still does not run, visit our website at www.DRPower.com or call 1-800-DR-OWNER (376-9637) for assistance.
<i>Motor Reset continuously trips</i>	<ul style="list-style-type: none"> ⇒ Make sure the voltage at the outlet or extension cord connection to the Splitter is 110-120VAC. ⇒ If you are using an extension cord, make sure that the cord is no more than 25 feet long, is not smaller than 12 AWG wire or no more than 50 feet long, and is not smaller than 10 AWG wire. ⇒ The Belt is too tight. Check the Belt Tension and adjust to allow for slipping.
<i>Log fails to split.</i>	<ul style="list-style-type: none"> ⇒ Incorrect positioning of the log; re-position the log flat on the splitting beam with the end squarely against the Wedge. ⇒ Log exceeds permitted dimensions, or the wood is too hard for the capacity of the machine. The maximum log length is 16" with a maximum diameter of 12" for the Splitter
<i>Rack returning very slow or not returning properly.</i>	<ul style="list-style-type: none"> ⇒ Check for wood chips or debris between ram and rail. Clean beam of built up/caked on debris. ⇒ Check rack lift bearing for alignment or damage. ⇒ Check interference between Ram and Tray. ⇒ Return spring is unhooked or damaged. Reconnect or replace as needed.
<i>Operator Lever snapping out of gear or not staying in gear.</i>	<ul style="list-style-type: none"> ⇒ Lever not all the way in the Split Position when rack comes under full load. Push lever quicker and more forcefully into the full Split Position. A hard stop should be felt at the end of the stroke when engaging the handle. ⇒ Vertical adjustment is not adjusted correctly. See the "Adjusting the Steel Bushing over Center" section in Chapter 4. ⇒ Ram has been overloaded at lower part of face. Check rack gear for straightness.
<i>With Motor running and the handle is pushed, the ram does not move or is slow to respond.</i>	<ul style="list-style-type: none"> ⇒ Make sure the voltage at the outlet or extension cord connection to the Splitter is 110-120VAC. ⇒ If you are using an extension cord, make sure that the cord is no more than 25 feet long, is not smaller than 12 AWG wire or no more than 50 feet long, and is not smaller than 10 AWG wire. ⇒ If the Wedge will still not move or is slow to respond, Visit our website at www.DRPower.com, or call 1-800-DR-OWNER (376-9637) for assistance.

Troubleshooting Table (Continued)

WARNING

Before performing any maintenance procedure or inspection, stop the electric motor, wait five minutes to allow all parts to cool. Disconnect the power cord from the source of Electricity.

SYMPTOM	POSSIBLE CAUSE
<i>Rack slamming back too fast.</i>	⇒ Wedge end of machine too high. Must be almost level with ram end or just slightly higher. ⇒ Springs not operating properly. Fix or replace as needed.
<i>Machine does not seem to have full splitting power.</i>	⇒ The belt may be too loose. Adjust or replace belt as needed.
<i>Operator Lever not engaging rack with pinion gear.</i>	⇒ Clean wood chips or other debris from under rack. ⇒ Clean accumulated dirt from frame where carriage assembly rests against rubber bumpers.
<i>Rack not disengaging from pinion when handle is released</i>	⇒ Belt must be loosened to allow for slipping while disengaging

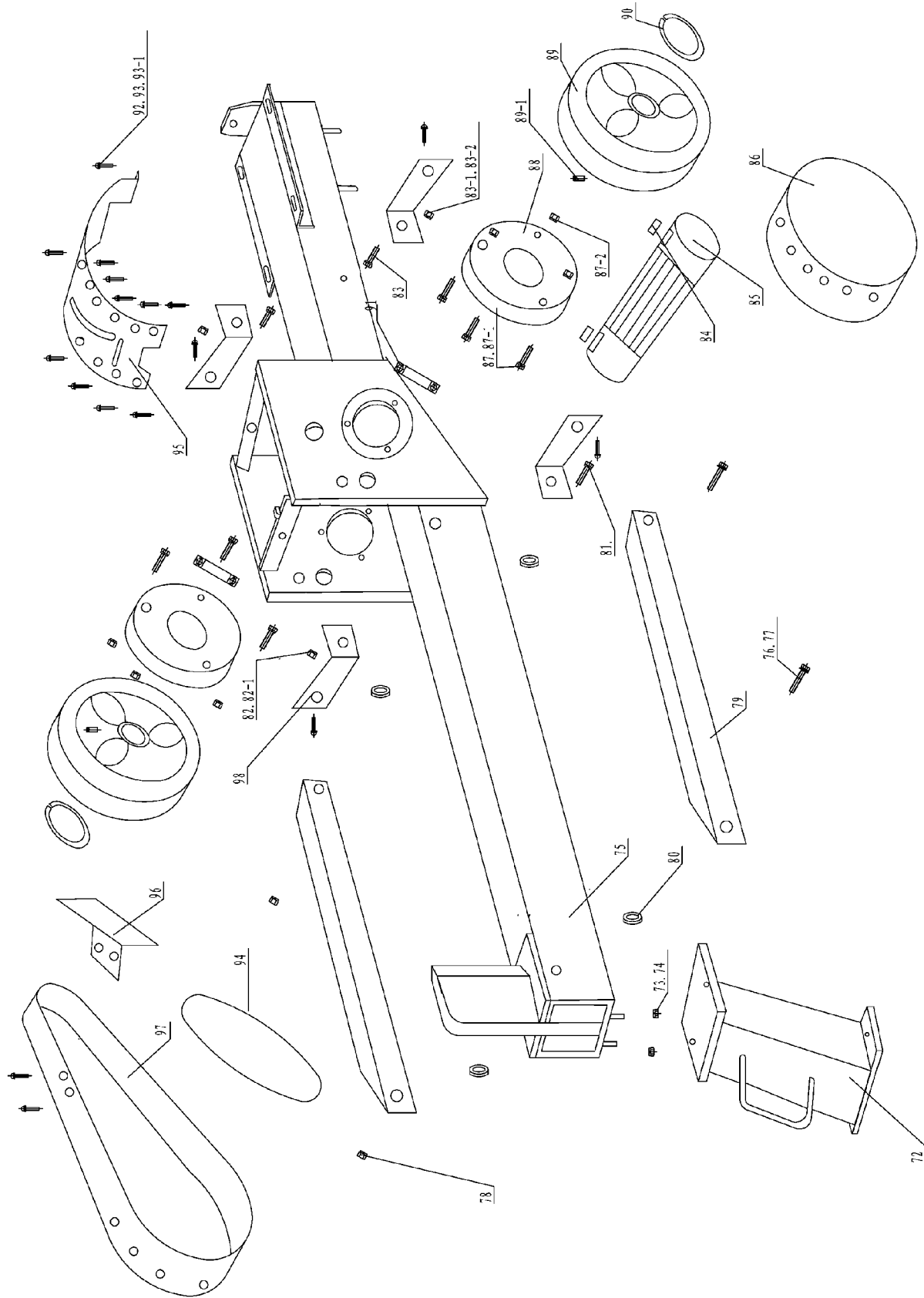
Chapter 6: Parts Lists and Schematic Diagrams

Parts List – Flywheel and Cover Assembly

NOTE: Part numbers listed are available through DR Power Equipment.

<u>Ref#</u>	<u>Part#</u>	<u>Description</u>	<u>Ref#</u>	<u>Part#</u>	<u>Description</u>
72	353971	Leg Assembly	84	354081	Key, Flywheel, 8 mm X 7 mm X 20 mm
73	361031	Nut, Finish, M8, ZP	85	353991	Pinion
74	337431	Washer, Lock, M8	86	387691	Cover, Flywheel, Left, w/Labels
75	A0000381386	Frame, Forward Handle w/Labels	87	337031	Bolt, HCS, M8-1.25 X 25 mm, CL 8.8, ZP
76	364291	Bolt, HCS, M8 - 1.25 mm X 110 mm, CL 8.8, ZP	87-1	337431	Washer, Lock, M8
77	337431	Washer, Lock, M8	87-2	361031	Nut, Finish, M8, ZP
78	361031	Nut, Finish, M8, ZP	88	353911	Flange, Bearing
79	354051	Cradle, Log	89	353921	Flywheel
80	354061	Spacer, Cradle, Log	89-1	363181	Screw, Set, M8 X 1.0 X 8mm
81	302601	Bolt, HCS, M8-1.25 X 100 mm, CL 8.8, ZP	90	361011	Snap Ring, External, 24 mm X 1.2 mm
82	361031	Nut, Finish, M8, ZP	91	360931	Bearing, Roller, 30mm X 55mm X 13mm
82-1	337431	Washer, Lock, M8	92	363251	Screw, M5-.8 mm X 10 mm
83	337031	Bolt, HCS, M8-1.25 X 25 mm, CL 8.8, ZP	93	364321	Washer, Flat, M5
83-1	337431	Washer, Lock, M8	93-1	364331	Washer, Split-Lock, M5
83-2	361031	Nut, Finish, M8, ZP	94	364271	Belt, A1180
97	387701	Cover, Flywheel, Right, w/Labels	95	A0000381387	Cover, Center, w/Labels
98	354031	Bracket, Cover	96	364371	Cover, Belt, Right, Small

Schematic – Flywheel and Cover Assembly

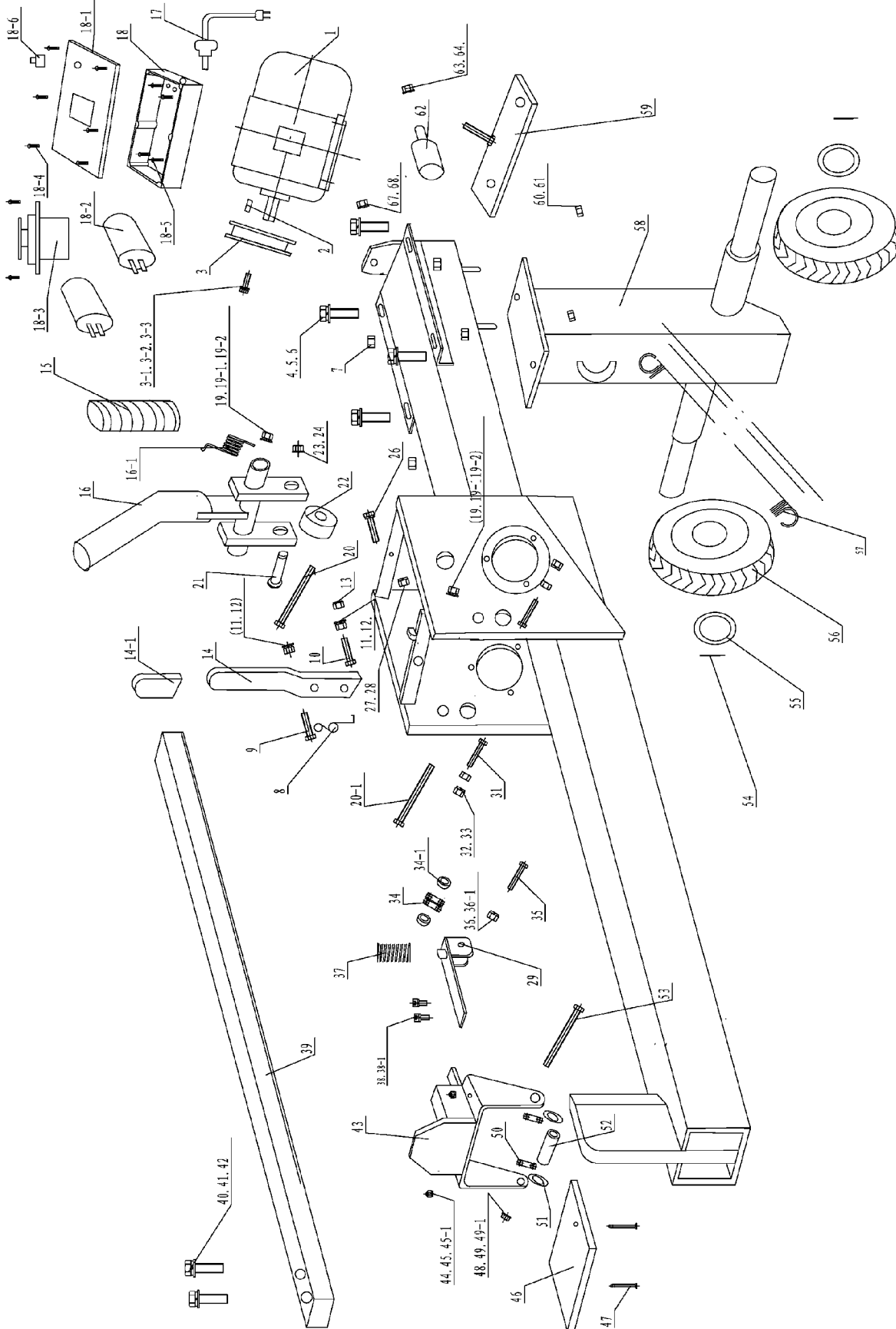


Parts List – Frame and Motor Assembly

Note: Part numbers listed are available through DR Power Equipment.

Ref#	Part#	Description	Ref#	Part#	Description
1	36095	Motor, 1060w	32	303591	Nut, Hex, M10-1.5
2	36108	Key, 6mm X 6mm X 25mm	33	364231	Washer, Split-Lock, M10
3	36427	Pulley, Single Belt, 51mm X 19mm	34	363241	Bearing, Lift, 10 mm X 22 mm X 6 mm
3-1	37202	Bolt, Hcs, M8-1.25 Mm X 15 Mm, Cl 8.8, Zp	34-1	394961	Spacer, Lift, Rack
3-2	33743	Washer, Lock, M8	35	360871	Bolt, M10 X 30 mm, CL 8.8, ZP
3-3	29251	Washer, Flat, M8	36	303591	Nut, Hex, M10-1.5
4	364221	Bolt, HCS, M10 - 1.50 mm X 30 mm, CL 8.8, ZP	36-1	364231	Washer, Split-Lock, M10
5	302501	Washer, M10	37	36106	Spring, Ram, Lifter
6	364231	Washer, Split-Lock, M10	38	392811	Bolt, SHCS, M8-1.25 x 16mm
7	303591	Nut, Hex, M10-1.5	38-1	337431	Washer, Lock, M8
8	360911	Spring, Return, 2 Hand Op	39	354151	Rack
9	364241	Bolt, HCS, M10 X 75mm, CL 8.8, ZP	40	364261	Bolt, HCS, M12 - 1.25 mm X 60 mm
10	360871	Bolt, HCS, M10 X 50mm, CL 8.8, ZP	41	360981	Washer, Split-Lock, M12
11	303591	Nut, Hex, M10-1.5	42	30252	Washer, M12
12	364231	Washer, Split-Lock, M10	43	39279	Ram Assembly
13	302491	Nut, Locking, M10	44	36434	Nut, Finish, M5
14	A0000322112	Handle, Forward Two-Hand Op	45	36433	Washer, Split-Lock, M5
14-1	360891	Cover, Handle Grip, 2 Hand Op	45-1	36432	Washer, Flat, M5
15	360901	Cover, Handle Grip, Actuation	46	35420	Slider
16	A0000322111	Handle - Forward Actuation	47	36431	Bolt, SH Counter Sink, M5-.8 mm X 20 mm, ZP
16-1	A0000322117	Spring, Actuation Handle	48	30359	Nut, Hex, M10-1.5
17	A0000322483	Cord, Power	49	30250	Washer, M10
18	A0000322477	Box - Electrical	49-1	36423	Washer, Split-Lock, M10
18-1	A0000381388	Cover - Electrical Box w/Labels	50	36086	Bearing, Roller, 10 mm X 25 mm X 11 mm
18-2	A0000322946	Capacitor - 50 Uf 250 Vac	51	30250	Washer, M10
18-3	A0000322948	Switch - Rocker	52	36096	Spacer, Ram
18-4	A0000322949	Screw - #6 X 5/8" Pan Head	53	36099	Bolt, HCS, M10 - 1.50 mm X 110 mm, CL 12.9, ZP
18-5	A0000322951	Screw - M4 X 10mm Pan Head W/ Washer	54	36327	Pin, Roll, 3 mm X 20 mm
18-6	A0000322953	Fuse	55	30361	Washer, Flat, M16
19	303591	Nut, Hex, M10-1.5	56	35409	Wheel
19-1	302501	Washer, M10	57	37201	Spring, Return
19-2	364231	Washer, Split-Lock, M10	58	35394	Mount Assembly, Axle
20	A0000381394	Bolt, HCS, M10 - 1.50 mm X 105 mm, CL 12.9, ZP	59	36105	Tension, Belt
20-1	360991	Bolt, HCS, M10 - 1.50 mm X 110 mm, CL 12.9, ZP	60	30359	Nut, Hex, M10-1.5
21	364251	Bolt, HCS, M12 - 1.75 mm X 50 mm, CL 8.8 ZP	61	33743	Washer, Lock, M8
22	364351	Bushing, Handle	62	36104	Bumper, Ram Stop
23	302521	Washer, M12	63	36103	Nut, Finish, M8, Zp
24	303591	Nut, Hex, M10-1.5	64	29251	Washer, Flat, M8
25	364361	Nut, Finish, M12, ZP	67	30250	Washer, M10
26	364221	Bolt, HCS, M10 - 1.50 mm X 30 mm, CL 8.8, ZP	68	30359	Nut, Hex, M10-1.5
27	303591	Nut, Hex, M10-1.5	69	36423	Washer, Split-Lock, M10
28	364231	Washer, Split-Lock, M10	Not Illustrated		
29	392801	Roller Assembly, Spring, 2 Bolt	A0000103520	Label, Warning, Operator	
31	361021	Bolt, Carriage, M10 - 1.50 mm X 50 mm, CL 8.8, ZP	36321	Label Branding	
			25044	Label, Warning, Pinch Point, 3.5x1	
			35187	Label, 5" Silver DR	

Schematic – Frame and Motor Assembly



Notes:

DR[®] K10 RAPIDFIRE™ LOG SPLITTER



2-Year Limited Warranty Terms and Conditions

The DR[®] K10 RAPIDFIRE™ LOG SPLITTER is warranted for two (2) years against defects in materials or workmanship when put to ordinary and normal consumer use; ninety (90) days for any other use.

For the purposes of all the above warranties, "ordinary and normal consumer use" refers to non-commercial residential use and does not include misuse, accidents, or damage due to inadequate maintenance.

DR[®] Power Equipment certifies that the DR[®] K10 RAPIDFIRE™ LOG SPLITTER is fit for ordinary purposes for which a product of this type is used. DR[®] Power Equipment however, limits the implied warranties of merchantability and fitness in duration to a period of two (2) years in consumer use, ninety (90) days for any other use.

The 2-Year Limited Warranty on the DR[®] K10 RAPIDFIRE™ LOG SPLITTER starts on the date the machine ships from our factory. The 2-Year Limited Warranty is applicable only to the original owner.

The warranty holder is responsible for the performance of the required maintenance as defined by the manufacturer's owner's manuals. The warranty holder is responsible for replacement of normally wearing parts such as the Drive Belt. This warranty does not cover attachments and accessories to the machine.

During the warranty period, the warranty holder is responsible for the machine transportation charges, if required.

During the warranty period, warranty parts will ship by standard method at no charge to the warranty holder.

Expedited shipping of warranty parts is the responsibility of the warranty holder.

SOME STATES DO NOT ALLOW LIMITATIONS ON THE LENGTH OF IMPLIED WARRANTIES, SO THE ABOVE LIMITATIONS MAY NOT APPLY TO YOU.

DR[®] Power Equipment shall not be liable under any circumstances for any incidental or consequential damages or expenses of any kind, including, but not limited to, cost of equipment rentals, loss of profit, or cost of hiring services to perform tasks normally performed by the DR[®] K10 RAPIDFIRE™ LOG SPLITTER.

SOME STATES DO NOT ALLOW THE EXCLUSION OR LIMITATION OF INCIDENTAL OR CONSEQUENTIAL DAMAGES, SO THE ABOVE LIMITATIONS MAY NOT APPLY TO YOU.

THIS WARRANTY GIVES YOU SPECIFIC LEGAL RIGHTS, AND YOU HAVE OTHER RIGHTS, WHICH VARY FROM STATE TO STATE.

Daily Checklist for the DR K10 RAPIDFIRE LOG SPLITTER

To help maintain your DR K10 RAPIDFIRE LOG SPLITTER for optimum performance, we recommend you follow this checklist each time you use your Log Splitter.

! WARNING

Before performing any maintenance procedure or inspection, stop the motor, wait five minutes to allow all parts to cool. Disconnect the power cord from the source of Electricity.

- Check that motor cooling fins are clean of debris.
- Check the general condition of the Log Splitter, e.g.; Nuts, Bolts, Welds, etc.
- Check the Frame for wear and damage.
- Check the Wedge for nicks and wear. Sharpen if needed.
- Apply a rust preventative (Fluid Film or equivalent) to any bare metal areas on the top of the Rail. This will assure the longest possible service life of the Wedge.

! WARNING

Before performing any maintenance procedure or inspection, stop the motor, wait five minutes to allow all parts to cool. Disconnect the power cord from the source of Electricity.

End of Season and Storage

- Check the Wedge for nicks and wear. Sharpen if needed.
- Apply Grease to the Rack and Pinion Teeth.
- Apply a rust preventative (Fluid Film or equivalent) to any bare metal areas on the top of the Rail.
- Clean the exterior of the unit to remove all dirt, grease, and any other foreign material. Clean dirt and debris from the motor cooling Fins. To prevent rust, touch up painted surfaces that have been scratched or chipped.
- Be sure all Nuts, Bolts, and Screws are securely fastened.
- If possible, store the Log Splitter in a dry, protected place. If it is necessary to store the Log Splitter outside, cover it with a protective material (especially the Motor).