

# XTEND+CLIMB®

Innovative Climbing Solutions



## Product Line





**INTRODUCTION 1**

Xtend+Climb Benefits ..... 1

Ladder Series..... 2-3

Standards & Certifications..... 4

True Telescoping Technology™ ..... 5

**TELESCOPING LADDERS**

ContractorSeries™ ..... 6-7

ContractorSeries-XXC™ ..... 8-9

ProSeries™ ..... 10-11

HomeSeries™ ..... 12-13

**STEP LADDERS + STOOLS**

Ultralight™ ..... 14-15

SlimlineLight™ ..... 16

StableStep™ ..... 17

Stable Stool™ ..... 18

**XTEND+CLIMB® ACCESSORIES ..... 19**

**MARKETING & MERCHANDISING ..... 20-21**

## Storable

Our ladders retract from feet to inches in seconds and store almost anywhere.

## Transportable

Light enough to carry with one hand, they also fit into just about any vehicle.

## Easy To Use

Ladders extend to users' desired height and retract smoothly from a simple, patented locking mechanism.

## Safe

Every detail is designed with safety in mind, from dual steel locking bolts to a gentle closing system.

## Environmentally Friendly



Xtend+Climb® ladders produce a smaller carbon footprint and require 80% less to ship than traditional step or extension ladders. We're always looking for new ways to make a positive impact on the environment.

## Discover what millions of people already know.

In 2001, Xtend+Climb® set a new standard with our signature telescoping ladder. Today, we continue to lead the industry for innovation, safety and positive customer impact.

### **SAFETY ALWAYS COMES FIRST.**

All our models are **ANSI** compliant to meet the toughest standards and customers' toughest demands for safety and reliability.

### **SETTING THE HIGHEST BAR.**

Innovation is at the heart of everything we do. Today we hold 88 patents in 22 countries to bring retailers exceptional climbing products.

### **DEDICATED TO POSITIVE IMPACT.**

Thoughtfully designed from top to bottom to be the best tool for the job, users who know Xtend+Climb ask for us by name.

# Every ladder meets and



## **CONTRACTORSERIES™ PROFESSIONAL**

CS125+/300 CS155+/250 C165+/250



## **CONTRACTORSERIES-XXC™ PROFESSIONAL**

Multi-Purpose

Step Stools



**ULTRALIGHT**



**SLIMLINELIGHT**

exceeds ANSI standards.



**PROSERIES™**  
**PROFESSIONAL DIY**  
780P+ 785P+



**HOMESERIES™**  
**PROFESSIONAL DIY + RESIDENTIAL**  
750P+ 760P+ 770P+



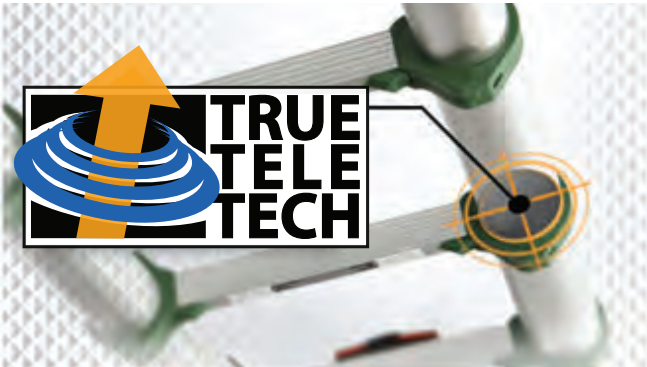
**STABLESTEP**



**STABLESTOOLS**



# Signature True Telescoping Technology™



The secret behind the Xtend+Climb® telescoping ladders, this patented technology allows our products to extend smoothly and lock completely at your desired height for unmatched versatility and safety.



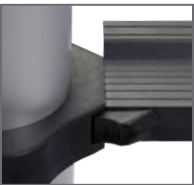
## **INDIVIDUAL RUNG LOCKING**

Each rung locks individually upon extension from the bottom of the ladder, to exceed tough new ANSI standards.



## **SAFETY YOU CAN SEE**

Visual indicators for lock and release ensure quick verification that the ladder is safe to use.



## **SAFETY CLOSURE SYSTEM**

The True Telescoping Technology Safety Closure System includes a unique dampening feature which allows each rung to gently close.



## **ERGONOMIC DETAILS**

Thoughtful design elements, like ergonomic couplings, ensure a more user-friendly experience.

The tallest, strongest ladders in the U.S., the ContractorSeries™ greatly surpasses ANSI testing protocols.

**EACH MODEL FEATURES:**

- Tough, black powder-coated finish
- Largest tube width in the U.S.
- Integrated soft carrying handle
- Over-molded foot design
- Aerospace engineered aluminum alloy
- Safety closure system
- Extra deep angled rungs



**CS125+/300**

With Wide 2.25" Steps

ANSI Type 1A – 300 lbs

Reach Height: . . . . . 16.5'  
Height Open: . . . . . 12.5'  
Height Closed: . . . . . 32"

Width: . . . . . 19.75"  
Depth: . . . . . 4.5"  
Weight: . . . . . 34 lbs

Carton Height: . . . . . 34"  
Carton Width: . . . . . 22"  
Carton Depth: . . . . . 6"  
Carton Weight: . . . . 34 lbs





**CS155+/250-** ANSI Type 1 – 250 lbs

**CS155+/300** -ANSI Type 1A– 300 lbs

With Wide 2.25" Steps

Reach Height: . . . . .19.5'  
Height Open: . . . . . 15.5'  
Height Closed: . . . . .36.5"

Width: . . . . . 19.75"  
Depth: . . . . . 4.5"  
Weight: . . . . . 38 lbs

Carton Height: . . . . .38"  
Carton Width: . . . . .22"  
Carton Depth: . . . . .6"  
Carton Weight: . . . .36 lbs



**CS165+/250-** ANSI Type 1 – 250 lbs

With Wide 2.25" Steps

Reach Height: . . . . . 20.5'  
Height Open: . . . . . 16.5'  
Height Closed: . . . . .38.5"

Width: . . . . . 19.75"  
Depth: . . . . . 4.5"  
Weight: . . . . . 40 lbs

Carton Height: . . . . .39"  
Carton Width: . . . . .22"  
Carton Depth: . . . . .6"  
Carton Weight: . . . .40 lbs



Welcome to the future of telescoping ladders! This new multi-functional ladder is the ultimate workhorse, converting easily between step and extension ladder. Just as storable, transportable and safe as our other products, it's destined to be the most usable ladder on the market.

**HIGH PERFORMANCE**

- Aerospace engineered aluminum alloy
- Extra deep angled rungs

**MULTIPURPOSE**

- Ladder locks into 3 positions:
- Closed
- Step ladder
- Extension ladder
- Extends to 12 feet in full extension
- Extends to 6 feet in full step ladder position
- 24+ versatile configurations
- Safety closure system
- Patented semi-automatic hinge locking system
- Engineered for strength and safety
- Easy-to-use ergonomic grip



CONTRACTO

**XXC**

ANSI Type 1A – 300 lbs

Reach Height: . . . . . 16'  
Height Open: . . . . . 12'  
Height Closed: . . . . . 30.8"

Width: . . . . . 8.5"  
Depth: . . . . . 20"  
Weight: . . . . . 38 lbs

Carton Height: . . . . . 32.9"  
Carton Width: . . . . . 22.4"  
Carton Depth: . . . . . 10.5"  
Carton Weight: . . . 41.7 lbs



Retractable stabilizers



R SERIES-XXC

The Xtend+Climb® replaced bulky extension ladders forever. Today, our True Telescoping Technology™ and stylish, lightweight design still make it the ladder of choice for safety and versatility.



**780P+**

- ANSI Type 1A – 300 lbs
- Reach Height: ..... 16.5'
- Height Open: ..... 12.5'
- Height Closed: ..... 32"
- Width: ..... 19.75"
- Depth: ..... 4.5"
- Weight: ..... 32 lbs
- Carton Height: ..... 34"
- Carton Width: ..... 22"
- Carton Depth: ..... 6"
- Carton Weight: . . 36.5 lbs



**EACH MODEL FEATURES:**

- Aerospace engineered aluminum alloy
- Integrated soft carrying handle
- Ergonomic thumb release
- Safety closure system



**785P+**

ANSI Type 1 – 250 lbs

Reach Height: .....19.5'

Height Open: ..... 15.5'

Height Closed: .....36"

Width: ..... 19.75"

Depth: ..... 4.5"

Weight: ..... 36 lbs

Carton Height: .....38"

Carton Width: .....22"

Carton Depth: .....6"

Carton Weight: ....40 lbs



Our HomeSeries™ products bring the quality and convenience of our professional models to homeowners. Great for hard-to-reach places, they're easy to move and can be stored just about anywhere.

**EACH MODEL FEATURES:**

- Aerospace engineered aluminum alloy
- Integrated soft carrying handle
- Safety closure system



**750P+**

ANSI Type I – 250 lbs

Reach Height: . . . . . 12.5'

Height Open: . . . . . 8.5'

Height Closed: . . . . . 27"

Width: . . . . . 18"

Depth: . . . . . 3.75"

Weight: . . . . . 16.5 lbs

Carton Height: . . . . . 29"

Carton Width: . . . . . 20"

Carton Depth: . . . . . 5"

Carton Weight: . . . . 19 lbs



## 760P+

ANSI Type I – 250 lbs

Reach Height: . . . . . 14.5'

Height Open: . . . . . 10.5'

Height Closed: . . . . . 29"

Width: . . . . . 19"

Depth: . . . . . 4"

Weight: . . . . . 20 lbs

Carton Height: . . . . . 32"

Carton Width: . . . . . 21"

Carton Depth: . . . . . 5"

Carton Weight: . . . . 23 lbs

## 770P+

ANSI Type I – 250 lbs

Reach Height: . . . . . 16.5'

Height Open: . . . . . 12.5'

Height Closed: . . . . . 32"

Width: . . . . . 20"

Depth: . . . . . 5"

Weight: . . . . . 27 lbs

Carton Height: . . . . . 34"

Carton Width: . . . . . 21"

Carton Depth: . . . . . 6"

Carton Weight: . . . . 30 lbs



# Step Stools

Xtend+Climb® makes highly functional, storable step stools suited for unique needs around the home, office or work site.





**FT1**

Reach Height: ..... 7'  
 Platform Height: ..... 12"

Height Closed: ..... 13"  
 Width: ..... 13"  
 Spread: ..... 10.5"  
 Weight: ..... 2.26 lbs

Carton Height: ..... 15"  
 Carton Width: ..... 14"  
 Carton Depth: ..... 12"  
 Carton Weight: ..... 12 lbs



Our lightest step stool design yet. Extremely light and portable, this sturdy step stool is crafted of lightweight aluminum and features a clean design. It folds compact and can be stored almost anywhere in your home.

**FT2**

Reach Height: ..... 7.5'  
 Platform Height: ..... 21"

Height Closed: ..... 40"  
 Width: ..... 16"  
 Spread: ..... 17.5"  
 Weight: ..... 3.85 lbs

Carton Height: ..... 40"  
 Carton Width: ..... 18"  
 Carton Depth: ..... 4"  
 Carton Weight: ..... 5 lbs



**FT3**

Reach Height: ..... 8.5'  
 Platform Height: ..... 32"

Height Closed: ..... 51"  
 Width: ..... 17.5"  
 Spread: ..... 26"  
 Weight: ..... 4.85 lbs

Carton Height: ..... 52"  
 Carton Width: ..... 20"  
 Carton Depth: ..... 4"  
 Carton Weight: ..... 6 lbs



**FT4**

Reach Height: ..... 9.5'  
 Platform Height: ..... 43"

Height Closed: ..... 64"  
 Width: ..... 21"  
 Spread: ..... 33.5"  
 Weight: ..... 6 lbs

Carton Height: ..... 64"  
 Carton Width: ..... 22"  
 Carton Depth: ..... 4"  
 Carton Weight: ..... 7 lbs



These lightweight ladders feature an ultra-slim profile when folded, making them perfect for home, office or anywhere space is at a premium.

**EACH MODEL FEATURES:**

- Aerospace anodized aluminum finish or powdered coated color finish.
- Large folding steps with tread
- Fixed top handle for safe climbing
- Minimal plastic accents for a high-end look



**SL2H LIGHT**

Reach Height: . . . . . 7.5'  
Platform Height: . . . . 20.3"

Height Closed: . . . . . 41"  
Width: . . . . . 17.5"  
Spread: . . . . . 23"  
Weight: . . . . . 7 lbs

Carton Height: . . . . . 43"  
Carton Width: . . . . . 19"  
Carton Depth: . . . . . 3"  
Carton Weight: . . . . . 9 lbs

**SL3H LIGHT**

Reach Height: . . . . . 8.5'  
Platform Height: . . . . 30.3"

Height Closed: . . . . . 51.5"  
Width: . . . . . 17.2"  
Spread: . . . . . 30"  
Weight: . . . . . 10 lbs

Carton Height: . . . . . 53"  
Carton Width: . . . . . 19"  
Carton Depth: . . . . . 4"  
Carton Weight: . . . . . 12 lbs

**SL4H LIGHT**

Reach Height: . . . . . 9.5'  
Platform Height: . . . . 40.6"

Height Closed: . . . . . 52.3"  
Width: . . . . . 17.2"  
Spread: . . . . . 41.5"  
Weight: . . . . . 11 lbs

Carton Height: . . . . . 63.4"  
Carton Width: . . . . . 24.3"  
Carton Depth: . . . . . 4"  
Carton Weight: . . . . . 14 lbs

Safe, sturdy and portable, this series features a unique combination of extra wide and deep 8 inch steps with treads. Made of lightweight, industrial-grade aluminum.

- Capacity weight 375 lbs



**WT2**

Reach Height:.....7.5'  
Platform Height:.....18"

Height Closed:.....33"  
Width:.....20.6"  
Spread:.....21.6"  
Weight:.....15 lbs

Carton Height:.....34"  
Carton Width:.....22"  
Carton Depth:.....4"  
Carton Weight: ....17 lbs



**WT3**

Reach Height:.....8.5'  
Platform Height:....26.5"

Height Closed:.....44"  
Width:.....19"  
Spread:.....34"  
Weight:.....21 lbs

Carton Height:.....45"  
Carton Width:.....23"  
Carton Depth:.....6"  
Carton Weight: ....23 lbs



**WT4**

Reach Height:.....9.5'  
Platform Height:.....35"

Height Closed:.....54"  
Width:.....22.5"  
Spread:.....45"  
Weight:.....26 lbs

Carton Height:.....56"  
Carton Width:.....24"  
Carton Depth:.....6"  
Carton Weight: ....29 lbs



**WT5**

Reach Height:.....11'  
Platform Height: 44.75"

Height Closed:.....66"  
Width:.....24"  
Spread:.....54"  
Weight:.....32 lbs

Carton Height:.....67"  
Carton Width:.....24"  
Carton Depth:.....6"  
Carton Weight: ....34 lbs

This go-to stool features a stable, 15" platform with two steps and retractable caster wheels that lock when weight is applied.

---

**STABLE STOOL**

Capacity weight 300 lbs

Reach Height: ..... 7'

Height Open: ..... 15"

Width: ..... 16"

Depth: ..... 16"

Weight: ..... 4.8 lbs

Carton Height: ..... 17"

Carton Width: ..... 17"

Carton Depth: ..... 9"

Carton Weight: ..... 6 lbs



## RUNG COVER

Hugs the top rung of all Xtend+Climb® telescoping ladders.

- Protects walls from dents and scratches
- Made from heavy duty silicone
- Sizes available for all X+C™ models  
 #TC811 – 750P+, 760P+, 770P+, 785P+, CS155+/250  
 #TC812 – 780P+, CS125+/300



## CARRYING BAG

The easiest way to transport Xtend+Climb® ladders.

- Protects ladder when not in use
- 3 carrying options for optimal comfort  
 #781 – 750P+, 760P+, 770P+  
 #782 – 780P, 785P, CS125+/300, CS155+/250, CS165+/250

## REPLACEMENT FOOT

Double Over-molded foot/bottom cap for all Xtend+Climb® telescoping ladders.

- Provides sure footing
- Designed for maximum ground contact  
 All Models



# Strategy meets creativity to drive retail sales

Xtend+Climb® is more than a vendor—we're your partner, providing the support and resources you need to promote, sell and build consumer loyalty.

## PACKAGING

Color-coded, easy to read boxes help consumers choose which Xtend+Climb® ladder is right for them.

- Clean, contemporary design stands out in-store
- Informative side panels maximize limited shelf space
- Box sizing helps customers choose the correct ladder height

## CUSTOMIZED DIGITAL MARKETING

Expand your marketing efforts with digital resources that educate and build relationships with customers.

## E-COMMERCE WEBSITE

Increase brand exposure with your customers and grow sales with our easy-to-use e-commerce platform.

## CUSTOM COLOR

Increase brand exposure with your customers and grow sales with our easy-to-use e-commerce platform.





## Point of purchase displays

### LADDER RACK

Our free-standing ladder rack holds up to four Xtend+Climb® ladders and features signage to enhance your in-store product display.

- Standard or custom signage available
- Provides more flexibility for product merchandising
- Designed to fit on standard Pog shelving
- Fits up to 4 X+C™ telescoping ladders of any model

### CUSTOM ASSET DEVELOPMENT

We're happy to work with you to design additional branded marketing materials and merchandising assets to support your sales efforts. Just ask!

# XTEND+CLIMB®

## Xtend+Climb® Headquarters

113 Washington Avenue North | Minneapolis, MN 55401

Direct: 612.330.9915 | Fax: 612.330.9920

[www.info@core-distribution.com](mailto:www.info@core-distribution.com)

