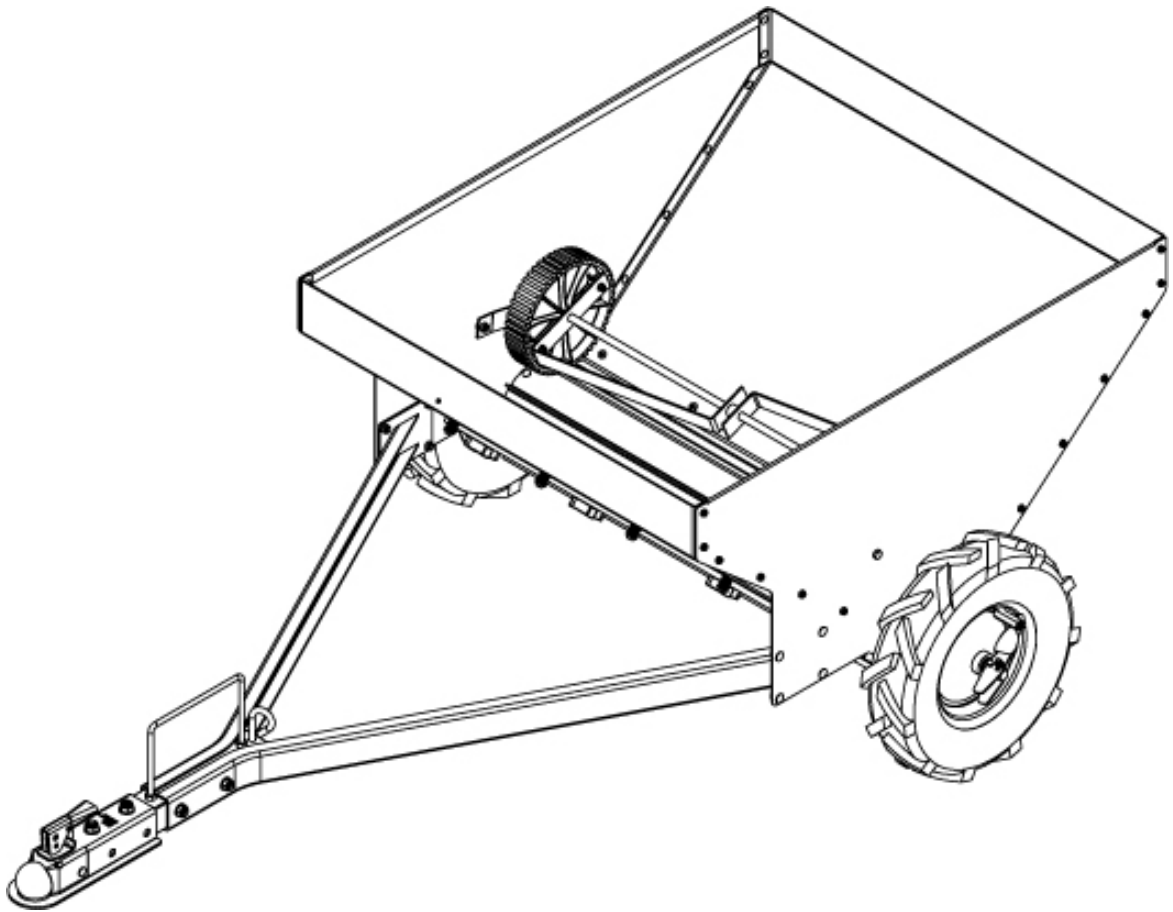


MANURE SPREADER



Owner's Manual *ASSEMBLY AND OPERATING INSTRUCTIONS*

SAVE THESE INSTRUCTIONS FOR FUTURE REFERENCE

Table of Contents

General Warnings and Rules.....	3
Hazard Signal Word Definitions.....	4
Controls and Features Identification.....	5
Assembly Instructions.....	6, 7
Operating Instructions.....	8
Maintenance and Storage.....	9
Parts Drawing and Parts List.....	10, 11, 12
Limited Warranty.....	13

GENERAL WARNINGS

READ and UNDERSTAND this manual completely before using the Manure Spreader.

Operators must read and understand all safety and warning information, operating instructions, maintenance and storage instructions before operating this equipment. Failure to properly operate and maintain the manure spreader could result in serious injury to the operator or bystanders.

Operation Warnings

- Never carry passengers.
- Do not sit or stand on the manure spreader.
- Do not allow children to play on, stand upon or climb on the manure spreader.
- Always inspect the manure spreader before use for missing or loose hardware.
- Replace or repair damaged or worn parts immediately.
- Always check and tighten hardware and assembled parts before operation.
- Avoid large holes and ditches when transporting loads.
- Be careful when operating on steep grades (hills) as the manure spreader may tip over.
- Do not pull close to creeks, ditches or public highways.
- Do not use the manure spreader in windy conditions.
- Always use caution when loading and unloading the manure spreader.
- Only tow the manure spreader using a lawn tractor, ATV or golf cart at a speed of no greater than 5 mph for spreading.

Crush and Cut Hazards

- Always keep hands and feet clear from moving parts while operating the manure spreader.
- Always keep the work area clean and clear of debris.
- Always wear safety gear, eye protection, gloves and work boots while operating the manure spreader.

WARNING

The warnings, cautions, and instructions outlined in this instruction manual cannot cover all possible conditions or situations that may occur. It must be understood by the operator that common sense and caution are factors which cannot be built into this product and must be supplied by the operator.

PROP 65 WARNING

This product can expose you to chemicals including lead and lead compounds which are known to the State of California to cause cancer and birth defects or other reproductive harm. For more information, go to www.P65Warnings.ca.gov

Assembly Is Required

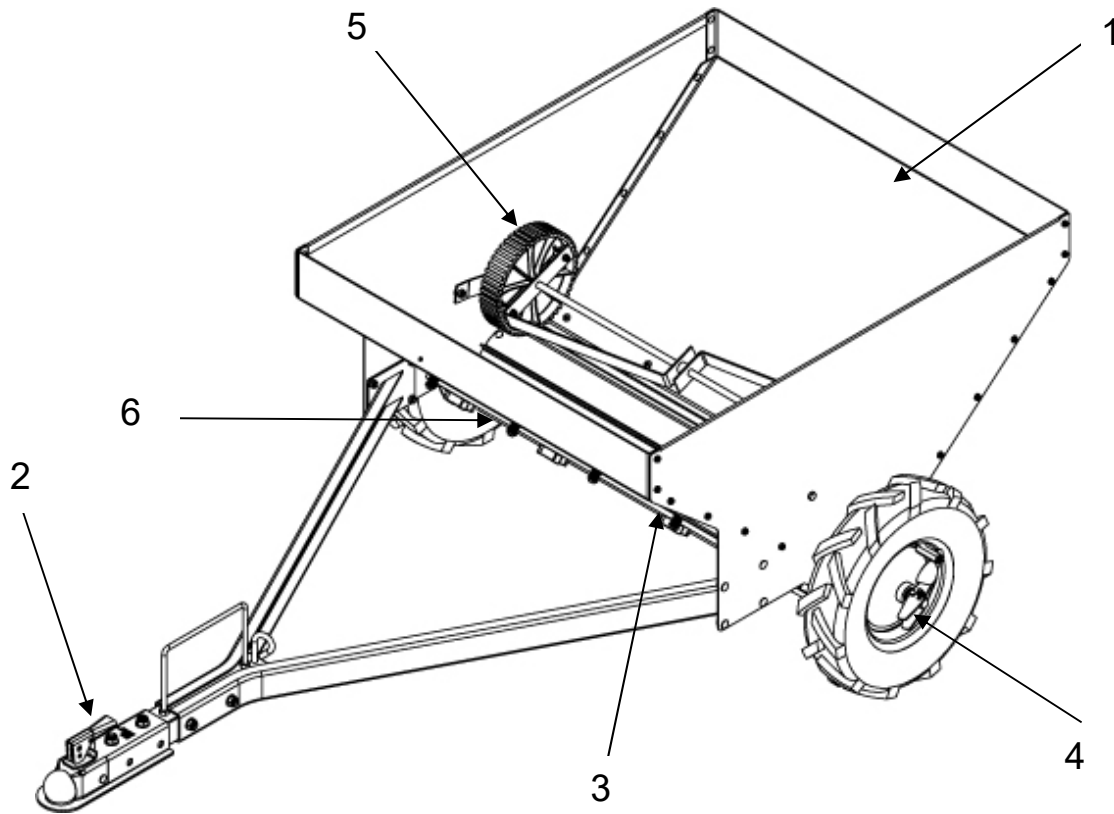
This product requires assembly before use. See "Assembly" section for instructions. **INSPECT ALL COMPONENTS** closely upon receipt to make sure no components are missing or damaged.

Hazard Signal Word Definitions

	<p>This is the safety alert symbol. It is used to alert you to potential personal injury hazards. Obey all safety messages that follow this symbol to avoid possible injury or death.</p>
	<p>DANGER indicates an imminently hazardous situation which, if not avoided, will result in death or serious injury.</p>
	<p>WARNING indicates a potentially hazardous situation which, if not avoided, could result in death or serious injury.</p>
	<p>CAUTION indicates a potentially hazardous situation which, if not avoided, may result in minor or moderate injury.</p>
	<p>CAUTION used without the safety alert symbol indicates a potentially hazardous situation which, if not avoided, may result in property damage.</p>

Controls and Features Identification

Read this owner's manual before operating the equipment. Familiarize yourself with the location and function of all the controls and features. Please save this manual for future reference.



- 1) Hopper
- 2) 2" Coupler
- 3) Spreading Drum
- 4) Spreading Engagement Lever
- 5) Agitator
- 6) Relief Panel



CAUTION

Read and follow all instructions for assembly and operation. Failure to properly assemble this equipment could result in serious injury to the user or bystanders and/or cause equipment damage.

MANURE SPREADER COMPONENT PARTS AND ASSEMBLY

Before beginning to assemble the manure spreader, take all parts out of the shipping crate and inspect components to ensure there are no missing pieces. Carefully follow assembly steps 1 through 2.

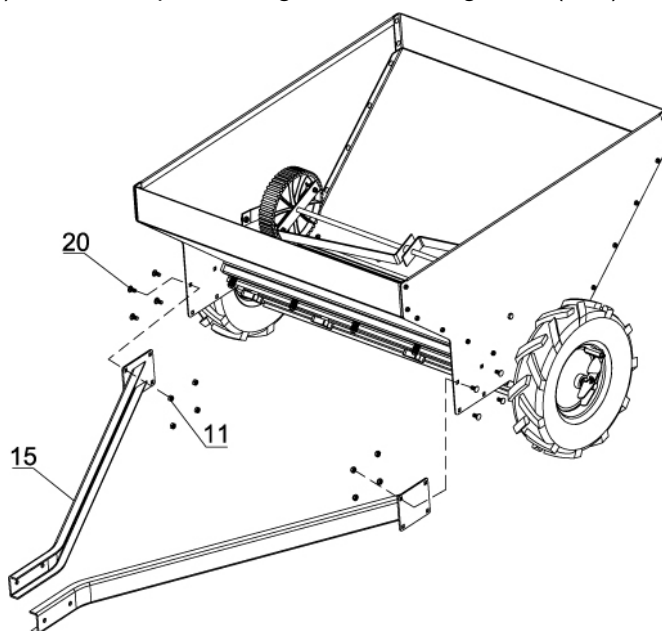
TOOLS REQUIRED

- 13mm Wrench
- 17mm Wrenches (2 Each)

Assembly Instructions

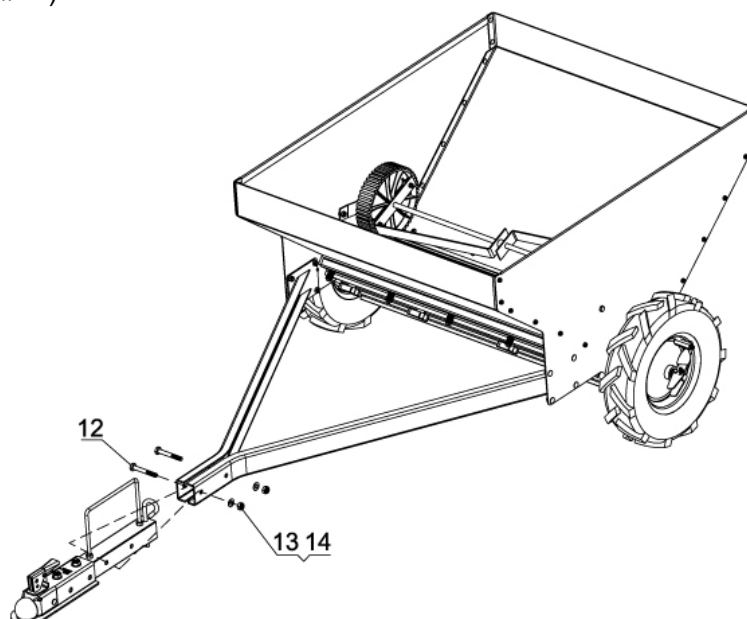
STEP 1: Attach Tow Bar

Attach tow bar (#15) to the side plate using M8x16 carriage bolt (#20) and M8 nylon lock nut (#11).



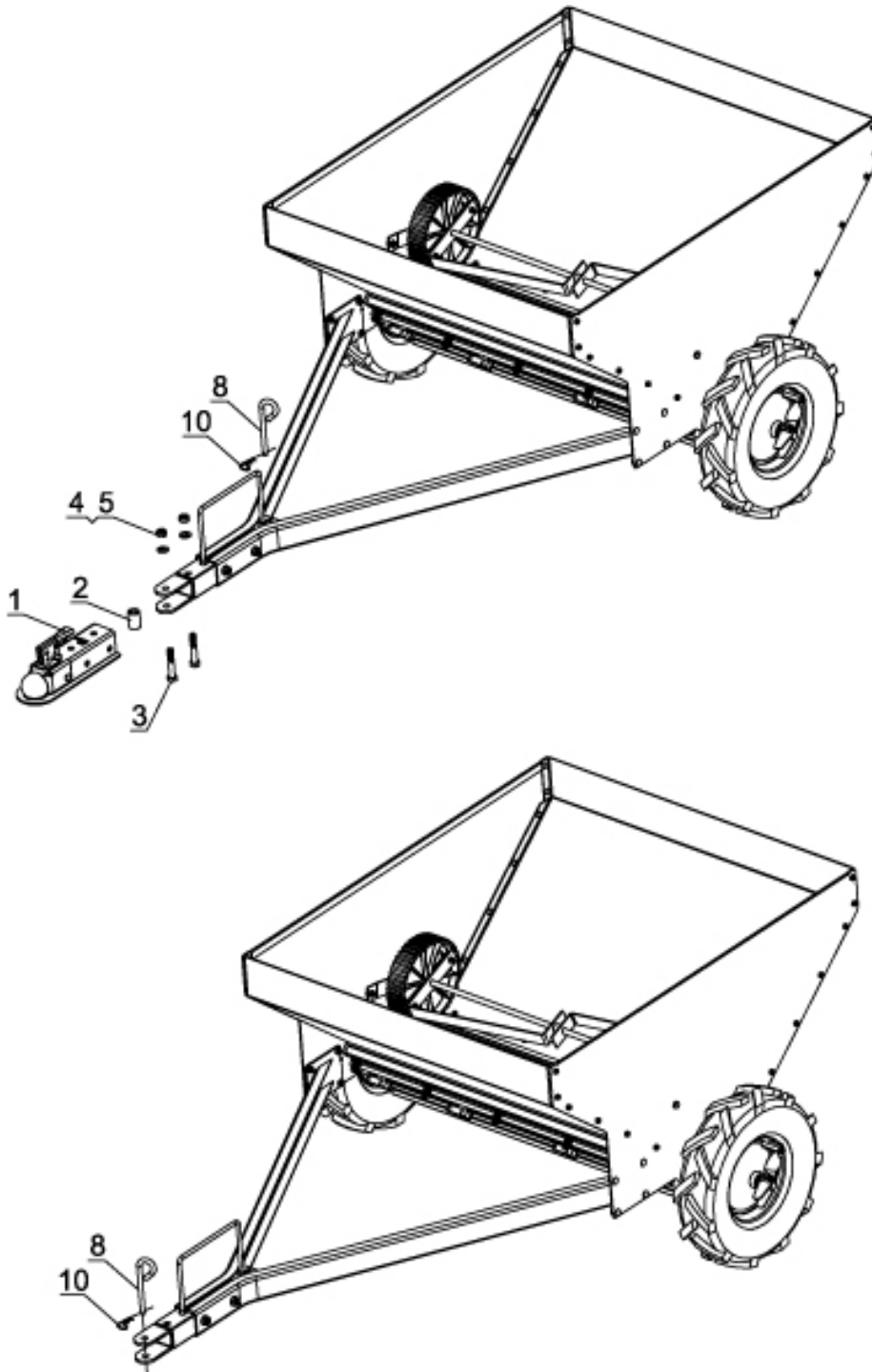
STEP 2: Attach Coupler Assembly

Attach coupler assembly to the tow bar using M10x75 Hex Bolt (#12), Ø10 flat washer (#13) and M10 nylon lock nut (#14).



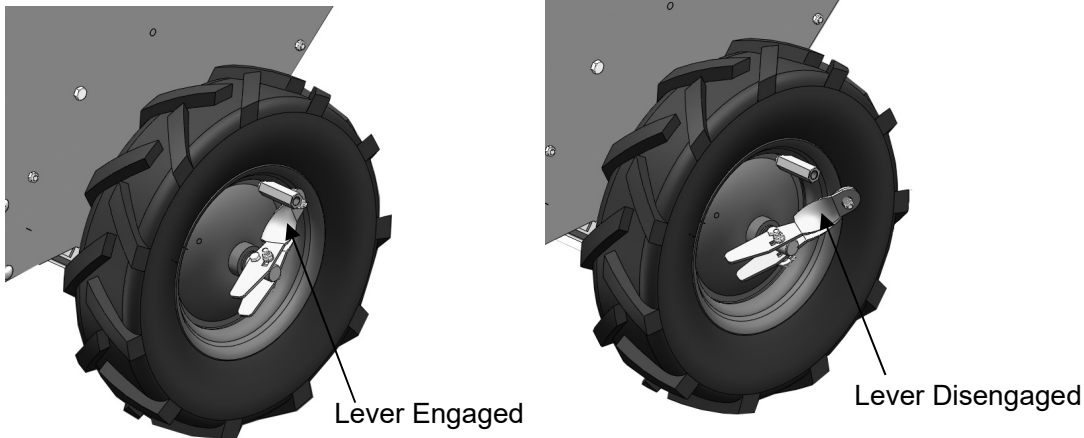
ALTERNATIVE CONNECTION FOR THE TOW BAR.

Unscrew the M12x70 hex bolt (#3), Ø12 flat washer (#4) and M12 nylon lock nut (#5), then remove coupler (#1) and bushing (#2). Pull out the hitch pin (#8) and the R pin (#10) and insert them into the front hole.



Operating Instructions

- 1) Attach the manure spreader to a vehicle using either the 2" ball coupler or the clevis hitch.
- 2) Rotate the agitator until the rubber wheels are resting on the manure spreader drum.
- 3) Fill the manure spreader with manure.
- 4) Drive the manure spreader to the desired spreading location.
- 5) Flip the spreading engagement lever to engage the spreading drum on either both wheels or one wheel.



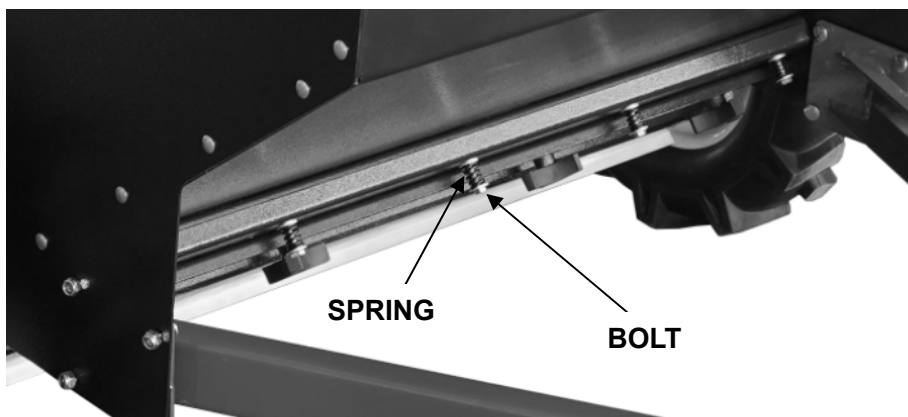
- Engage only one wheel when making a large number of turns while spreading. Engage the wheel opposite of the way you will be turning. For example, if you are turning left, engage the right wheel.
 - Engage both wheels for heavy loads of manure and straight-line spreading.
- 6) Spread the manure while maintaining safe driving speeds.

Adjusting the manure spreader discharge rate and pattern.

- The spreader discharges manure from between the drum and discharge plate. The spring force of the discharge plate against the drum breaks up the manure as the spreader discharges the manure.
- Using the adjustment plate to change the size of the holes in the discharge plate allows for further adjustment of the manure spread pattern and ability to control the discharge rate.

Loosening or tightening the bolts enclosed by the small compression springs on the discharge plate adjusts the manure spreader discharge rate.

- Tightening the bolts compresses the springs making it more difficult for manure to pass between the drum and discharge plate. Tighten the bolts to break up the manure into fine pieces before its' discharged.
 - o Overtightening the bolts may result in manure being unable to discharge.
 - o Suggestion: Tighten the compression springs bolts as far as possible while still allowing manure to pass, then change the discharge opening by adjusting the discharge adjustment plate.
- Loosen the bolts to allow larger pieces of manure to discharge from the spreader.



The manure spreader has an adjustment plate which changes the discharge hole sizes in the discharge plate. Adjust the size of the discharge holes by loosening the threaded knobs on the adjustment plate and sliding the plate to the desired opening.

Maintenance and Storage



WARNING

Improper maintenance and storage of the manure spreader may void the warranty.

MAINTENANCE

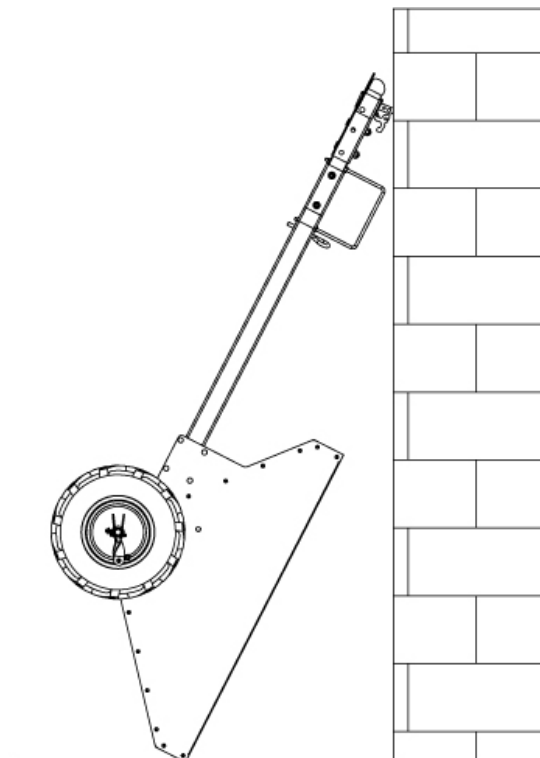
- After each use, carefully clean material out of the hopper.
- Rinse and dry the inside and outside of the manure spreader after each use.
- Prior to each use, inspect and verify that all hardware is tight.
- Before initial use, add grease to the two grease zerks on each side of the wheels.
- Check and periodically add grease to the wheels.
- After every use, spray out the hopper and the spreading drum. Cleaning the spreader will keep debris and manure from clogging the spreading drum and damaging the spreader.
- Check the rubber guard after every use and replace as needed.

IMPORTANT:

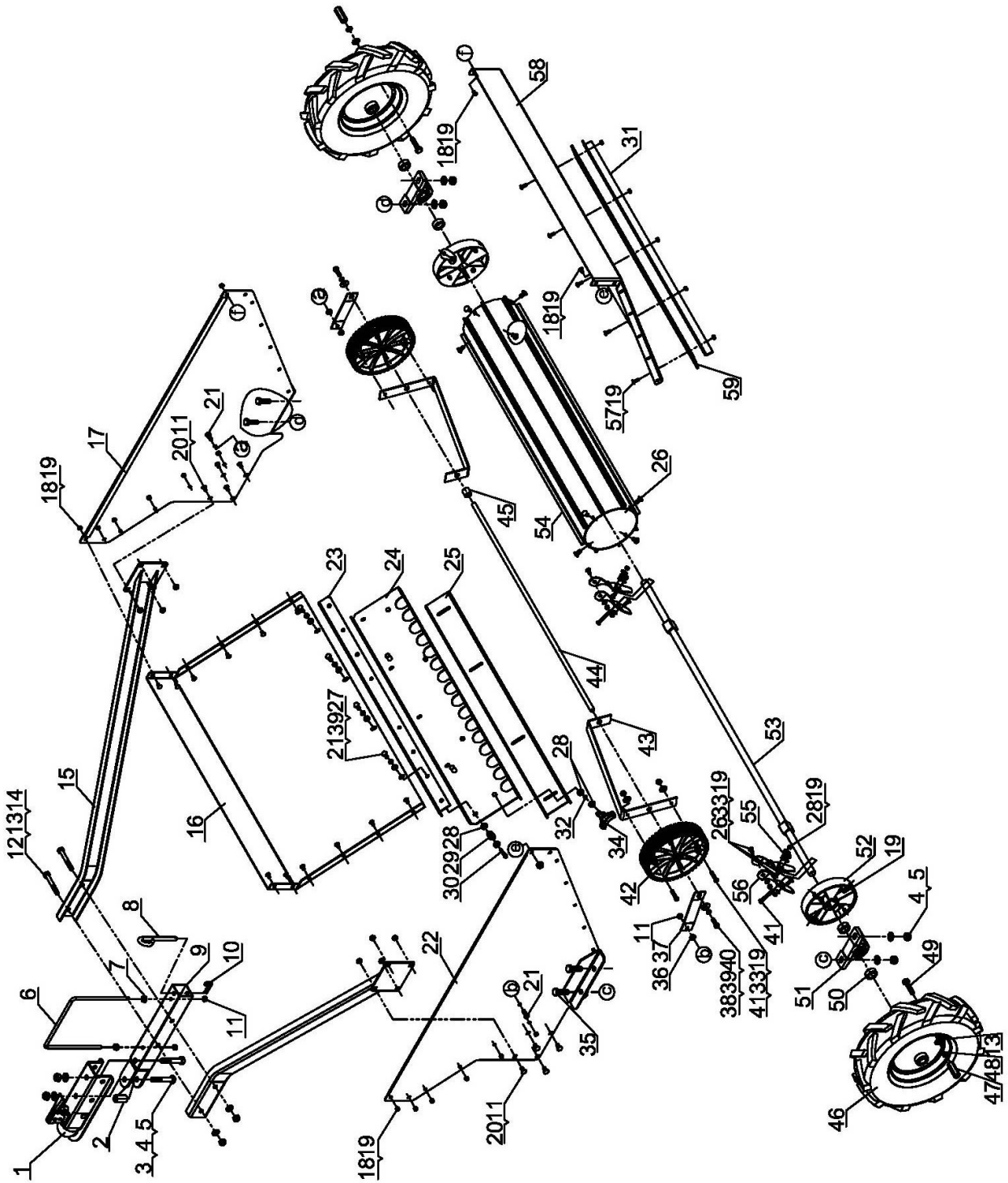
When replacing parts, be sure to only use parts that meet the manufacturer's specifications. Replacement parts that do not meet the manufacturer's specifications may result in safety hazards and/ or poor machine operation, and may void the warranty.

STORAGE

- Never allow material to remain in the hopper for extended periods of time.
- Before storing, make sure the manure spreader is clean and dry.
- Store indoors or in a protected area during any severe weather and during winter months.
- Store the unit upright to allow any water to drain.



Parts Drawing and Parts List



Parts Drawing and Parts List

Ref#	Drawing No.	Description	Qty
1	Z103	2in Coupler	1
2	DCP1203-00001	Bushing	1
3	9101-12070-DX8.8	M12x70 Hex Bolt	2
4	9301-12000-DX	Ø12 Flat Washer	6
5	9206-12000-DX	M12 Nylon Lock Nut	6
6	TS0900-00012	Handle	1
7	9201-08000-DX	M8 Nut	2
8	N870-00011-DX	Hitch Pin	1
9	TS0900-04000	Coupler Assembly	1
10	LSP25-00005-DX	R Pin	1
11	9206-08000-DX	M8 Nylon Lock Nut	12
12	9101-10075-DX8.8	M10x75 Hex Bolt	2
13	9301-10000-DX	Ø10 Flat Washer	4
14	9206-10000-DX	M10 Nylon Lock Nut	2
15	TS0900-03000	Tow Bar	2
16	TS0900-00001	Rear Plate	1
17	TS0900-01000	Right Side Plate	1
18	9114-06012-DX	M6x12 Carriage Bolt	26
19	9206-06000-DX	M6 Nylon Lock Nut	49
20	9114-08016-DX	M8x16 Carriage Bolt	8
21	9101-08020-DX8.8	M8x20 Hex Bolt	6
22	TS0900-02000	Left Side Plate	1
23	TS0900-07000	Support Plate	1
24	TS0900-06000	Discharge Plate	1
25	TS0900-00004	Adjustment Plate	1
26	9114-06016-DX	M6x16 Carriage Bolt	14
27	9301-08000-DX	Ø8 Flat Washer	4
28	9302-06000-DX	Ø6 Large Flat Washer	20
29	TS0900-00018-DX	Spring	5
30	9101-06040-DX8.8	M6x40 Hex Bolt	5

Ref#	Drawing No.	Description	Qty
31	TS0900-00013	Pressing Plate	1
32	9306-06000-DX	Ø6 Lock Washer	4
33	9301-06000-DX	Ø6 Flat Washer	10
34	NS2600-00015	Threaded Knob	4
35	9101-12040-DX8.8	M12x40 Hex Bolt	4
36	TS0900-00014-DX	Sleeve	2
37	TS0900-00007	Fixed Plate	2
38	9199-08020-DX	M8x20 Large Flat Head Screw with Cross Groove	2
39	9306-08000-DX	Ø8 Lock Washer	6
40	9302-08000-DX	Ø8 Large Flat Washer	2
41	9101-06055-DX8.8	M6x55 Hex Bolt	6
42	TS0900-00009	Paddle Wheel	2
43	TS0900-00006	Shifter Fork	2
44	TS0900-00008	Stirring Shaft	1
45	TS0900-00010	Stirring Shaft Bushing	1
46	TS0900-00017	Wheel	2
47	TS0900-00015-DX	Limit Hexagon Steel	2
48	9306-10000-DX	Ø10 Lock Washer	2
49	9101-10045-DX8.8	M12x45 Hex Bolt	2
50	TS0900-00020-DX	Sleeve	4
51	UCP204	Rolling Bearing	2
52	TS0900-00003	Drum Fixing Ring	2
53	TS0900-05000	Axle Assembly	1
54	TS0900-00016	Aluminum Alloy Drum	1
55	TS0900-00019-DX	Clutch Spring	2
56	TS0900-00005-DX	Clamping Piece	4
57	9199-06016-DX	M6x16 Large Flat Head Screw with Cross Groove	5
58	TS0900-00002	Front Side Plate	1
59	TS0900-00011	Discharge Rubber Pad	1

Limited Warranty

Warranty

For one year from the date of purchase YTL International will replace or repair the manure spreader for the original purchaser. The warranty will not apply to any unit which was not assembled correctly, misused, overloaded or which has been used or operated contrary to instructions, or which has been repaired or altered by anyone other than an authorized representative.

Warranty Exclusions

This warranty does not cover cosmetic defects such as paint and decals, or wear items such as tires. This warranty will not cover failures or problems due to acts of God, or events or forces beyond the control of the manufacturer.

Normal Wear Exclusion

The manure spreader needs periodic service to perform well. This warranty does not cover repair when normal use has exhausted the life of a part or the equipment as a whole.

Installation, Use and Maintenance Exclusion

This warranty will not apply to parts and/or labor if the manure spreader has been misused, neglected, involved in an accident, abused, loaded beyond its limits, modified or assembled incorrectly. Normal maintenance is not covered under this warranty.

Limits of Implied Warranty and Consequential Damage Exclusion

YTL International disclaims any obligation to cover any loss of time, use of this product, freight, or any incidental or consequential claim by anyone from using this manure spreader. THIS WARRANTY IS IN LIEU OF ALL OTHER WARRANTIES, EXPRESS OR IMPLIED, INCLUDING WARRANTIES OF MERCHANTABILITY OR FITNESS FOR A PARTICULAR PURPOSE.

An exchange unit will be subject to the original warranty. The length of the warranty governing the exchanged unit will have the same purchase date of the original unit. This warranty gives you certain legal rights which may vary from state to state. Your state may also have other rights you may be entitled to that are not listed within this warranty.

Contact Information

YTL International Inc.
17517 Fabrica Way Suite H
Cerritos, CA 90703
Phone: (888) 723-6534
Phone: (562) 404-8016
Email: parts@ytlinternational.com
Website: www.ytlinternational.com