



# ATV Seeder

## OWNER'S MANUAL



### **WARNING:**

Read carefully and understand all **ASSEMBLY AND OPERATION INSTRUCTIONS** before operating. Failure to follow the safety rules and other basic safety precautions may result in serious personal injury.

**Model # ATV-48ATVPS**

Thank you very much for choosing this product! For future reference, please complete the owner's record below:

Model: \_\_\_\_\_ Purchase Date: \_\_\_\_\_

Save the receipt, warranty and these instructions. It is important that you read the entire manual to become familiar with this product before you begin using it.

This product is designed for certain applications only. The manufacturer cannot be responsible for issues arising from modification. We strongly recommend this product not be modified and/or used for any application other than that for which it was designed. If you have any questions relative to a particular application, DO NOT use the product until you have first contacted us to determine if it can or should be performed on the product.

## INTENDED USE

This ATV seeder has 8 rows to seed corn, beans, oats, etc. There are two boxes with closeable slides for each row. The seeder has adjustable slots to use for different types of seed. This seeder is also able to seed grain.

## TECHNICAL SPECIFICATIONS

Weight	529 lbs
Rated Horse Power	Minimum 20 HP
Seeding Rows	8
Row Spacing	5.3 inches
Seed Rate	Each hole up to 20 lbs per acre

## GENERAL SAFETY RULES



**WARNING:** Read and understand all instructions. Failure to follow all instructions listed below may result in serious injury.



**CAUTION:** Do not allow persons to operate or assemble this seeder until they have read this manual and have developed a thorough understanding of how the seeder works.



**WARNING:** The warnings, cautions, and instructions discussed in this instruction manual cannot cover all possible conditions or situations that could occur. It must be understood by the operator that common sense and caution are factors which cannot be built into this product, but must be supplied by the operator.

# SAVE THESE INSTRUCTIONS

## WORK AREA

- **Keep work area clean**, free of clutter and well lit. Cluttered and dark work areas can cause accidents.
- **Keep children and bystanders** away while operating a seeder. Distractions can cause you to lose control, so visitors should remain at a safe distance from the work area.
- **Be alert of your surroundings.** Using a seeder in confined work areas may put you dangerously close to cutting tools and rotating parts.

## PERSONAL SAFETY

- **Stay alert**, watch what you are doing and use common sense when using a seeder. Do not use a seeder while you are tired or under the influence of drugs, alcohol or medication. A moment of inattention while operating a seeder may result in serious personal injury.
- **Dress properly.** Do not wear loose clothing, dangling objects, or jewelry. Keep your hair, clothing and gloves away from moving parts. Loose clothes, jewelry or long hair can be caught in moving parts.
- **Use safety apparel and equipment.** Use safety goggles or safety glasses with side shields which comply with current national standards, or when needed, a face shield. Use a dust mask if working in dusty work conditions. This applies to all persons in the work area. Also use non-skid safety shoes, hardhat, gloves, dust collection systems, and hearing protection when appropriate.

## SEEDER USE AND CARE

- **Do not modify the seeder in any way.** Unauthorized modification may impair the function and/or safety and could affect the life of the equipment. There are specific applications for which the seeder was designed.
- **Always check for damaged or worn out parts before using the seeder.** Broken parts will affect the seeder operation. Replace or repair damaged or worn parts immediately.
- **Do not exceed the seeder load capacity.**
- **Distribute the load evenly.** Uneven loads may cause the seeder to tip, resulting in personal injury to the operator or others.
- **Use the seeder on flat and level surfaces** capable of supporting the seeder and its maximum load. Pulling or pushing a load on a slanted or uneven surface can result in loss of control.
- **Store idle seeder.** When seeder is not in use, store it in a secure place indoors and out of the reach of children. Inspect it for good working condition prior to storage and before re-use.

## INTENDED USE

1. Suitable for drilling corn, beans, oats, small grains, etc. in level or gently rolling fields.
2. The double disc coulters create an opening to seed easily in tilled soil.
3. The depth of seeding can be adjusted. Seeding quantity can be adjusted.
4. The seeder can plant seeds, roll, and drag all at the same time.

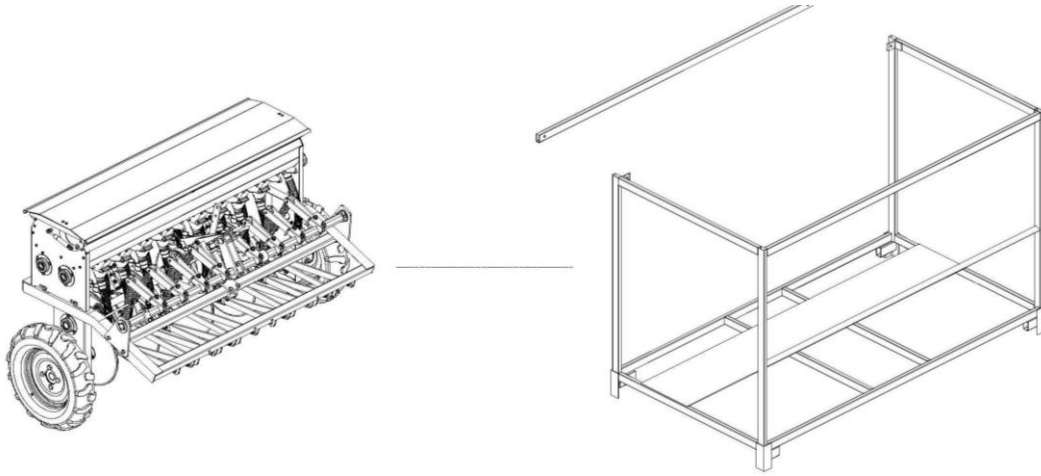
## **SAFETY PRECAUTIONS AND OPERATION RULES**

1. Note the following in order to avoid fertilizer burn:
  - a. The seed rate should be controlled according to your field condition.
2. Always inspect, maintain or adjust the seeder after each use.
3. While operating the seeder, keep area clean, free of clutter and well lit. Keep children and bystanders away. Distractions can cause you to lose control, so bystanders should remain at a safe distance from the work area.
4. The seeder should raise and lower smoothly.
5. The seeder should be inspected prior to each use. Carefully check all bolts, nuts, chains sprockets etc. to make sure they are in good condition and properly tightened. Keep guards in place at ALL times.
6. Keep the hopper clean and make sure there is no moisture inside before you fill with seed and fertilizer.
7. Working speed can be 3 -5 miles/hr.
8. **DO NOT** stand/sit between the seeder and the tractor/ATV/UTV while operating.
9. **DO NOT** go in reverse or turn sharply while seeder is in the ground.
10. During planting, avoid unnecessary stopping in the field to maintain consistent seed spacing.
11. Driver should have experience and be familiar with using this type of equipment.
12. The tractor/ATV/UTV should be stopped when adding seed and performing maintenance.
13. **DO NOT** go under the seeder for inspecting or repairing while seeder is in the up position.

# ASSEMBLY

## Step #1:

Remove the seeder from the crate.



## Step #2:

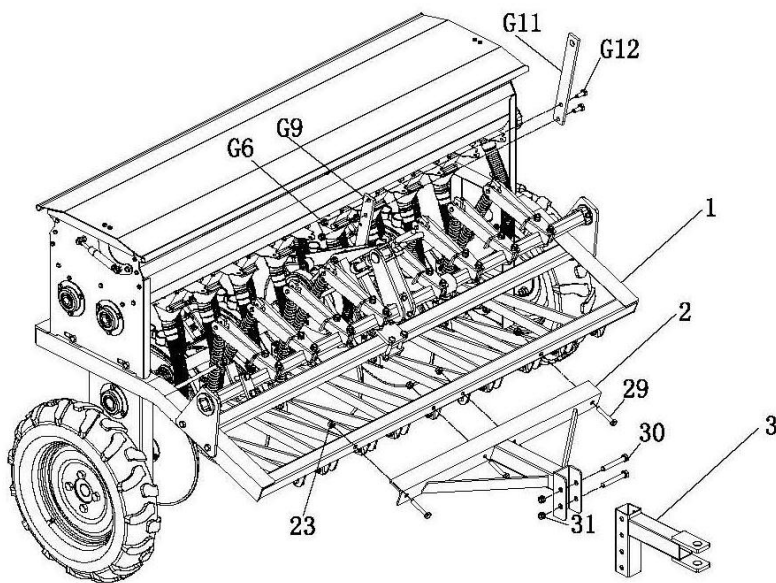
Connect the Support seat (#2) to the Seeder Rack (#1), using four Hex Bolts M10\*60(#29) and four Hex Lock Nuts M10 (#23);

## Step #3:

Connect the Connecting base (#3) to the Support seat (#2), using two Hex Bolts M12\*80(#30) and two Hex Lock Nuts M12 (#31);

## Step #4:

Connect the Handle component (#G11) to the Control handle component (#G9), using two Hex Bolts M10\*25(G12) and two Hex Lock Nuts M10 (G6);

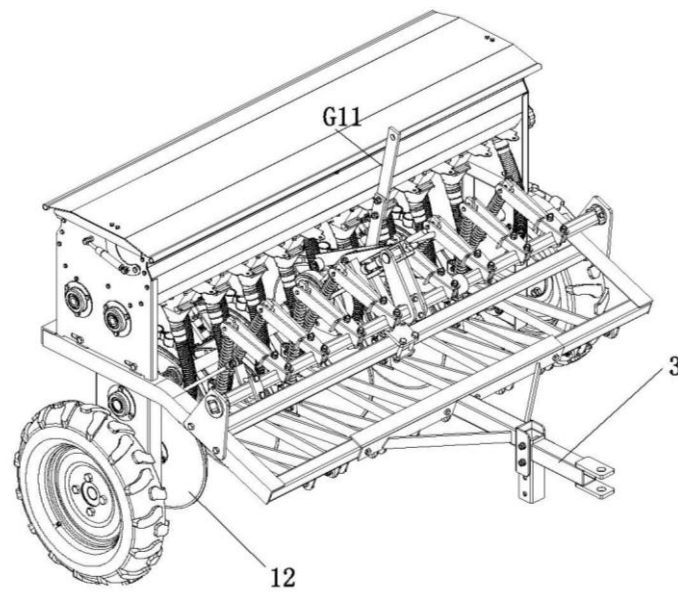


**Step #5:**

Connect the Connecting base (#3) to the ATV;

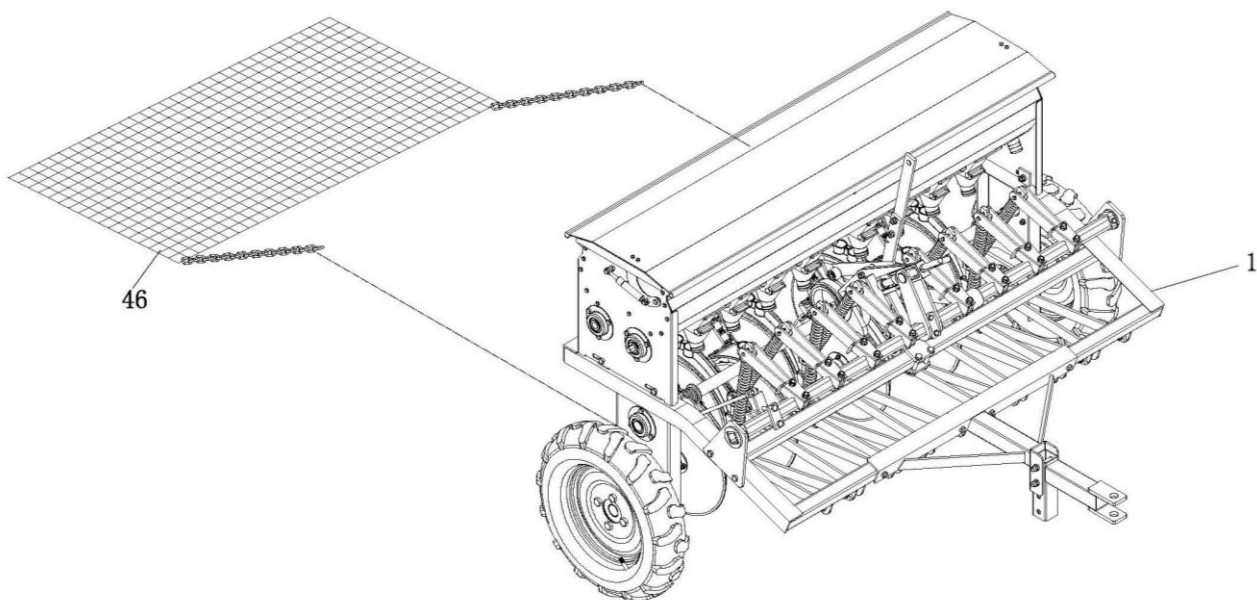
**Step #6:**

Pull the Handle component (#G11), to raise the seeder coulters (#12) off the ground, then drive ATV to the destination.



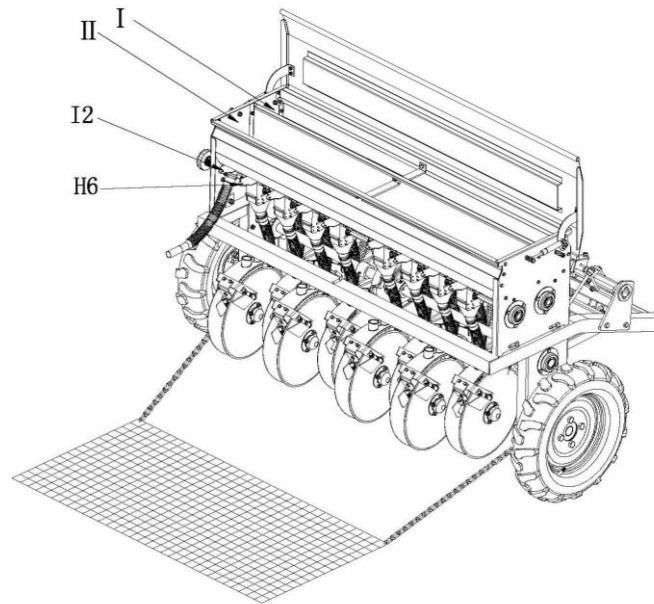
**Step #7:**

Connect the Drag Mat (#46) to the Seeder Rack (#1).



**Step #8:**

Open the material box 's cover plate, Close the two hose plate covers (#I2), then Close the front eight plate covers (#H6), put the fertilizer into Hopper I, and close other eight plate covers (#H6), put the seed into Hopper II. Close the material box.

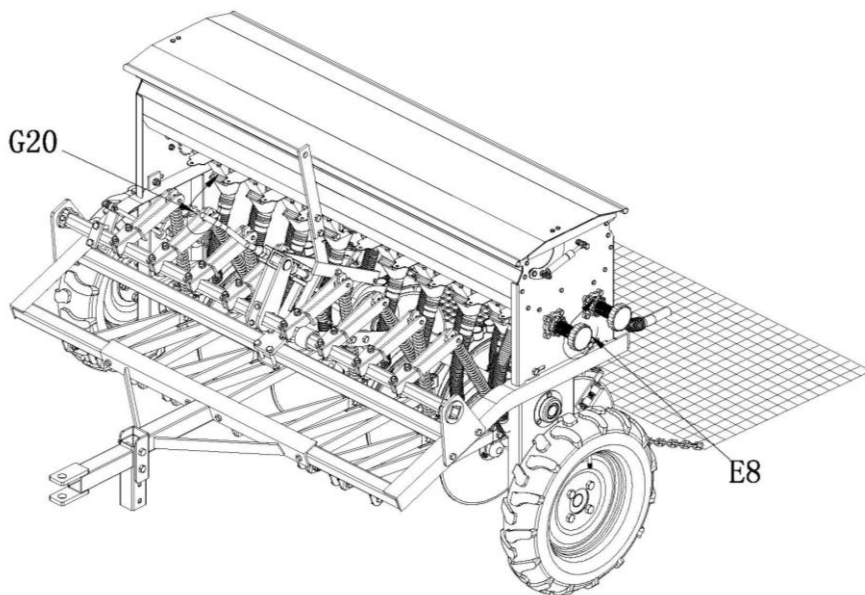


**Step #9:**

Turn the Control hand wheel (#E8) to adjust the seed rate, turn clockwise to reduce the rate, counter clockwise to increase the rate.

**Step #10:**

Turn the Transmission rod (#G20) to adjust the seed/fertilizer depth, turn clockwise for shallow depths and counter clockwise for deeper depths.

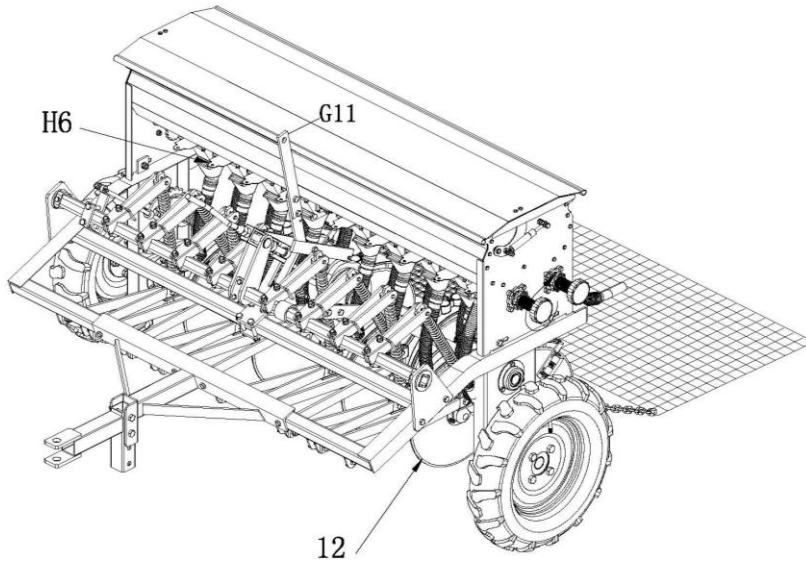


**Step #11:**

Open the sixteen plate covers (#H6) to prepare to seed.

**Step #12:**

Drive the ATV, Pull the Handle component (#G11) to lower the seeder coulters (#12) into the ground. Then begin to seed.

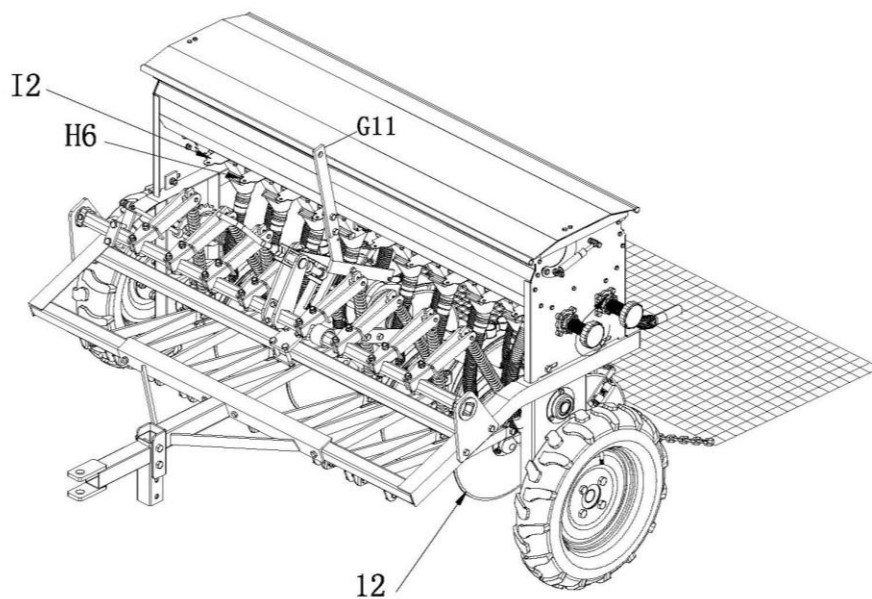


**Step #13:**

Close the sixteen plate covers (#H6), and open the two hose plate covers (#I2), to clear the seed and fertilizer.

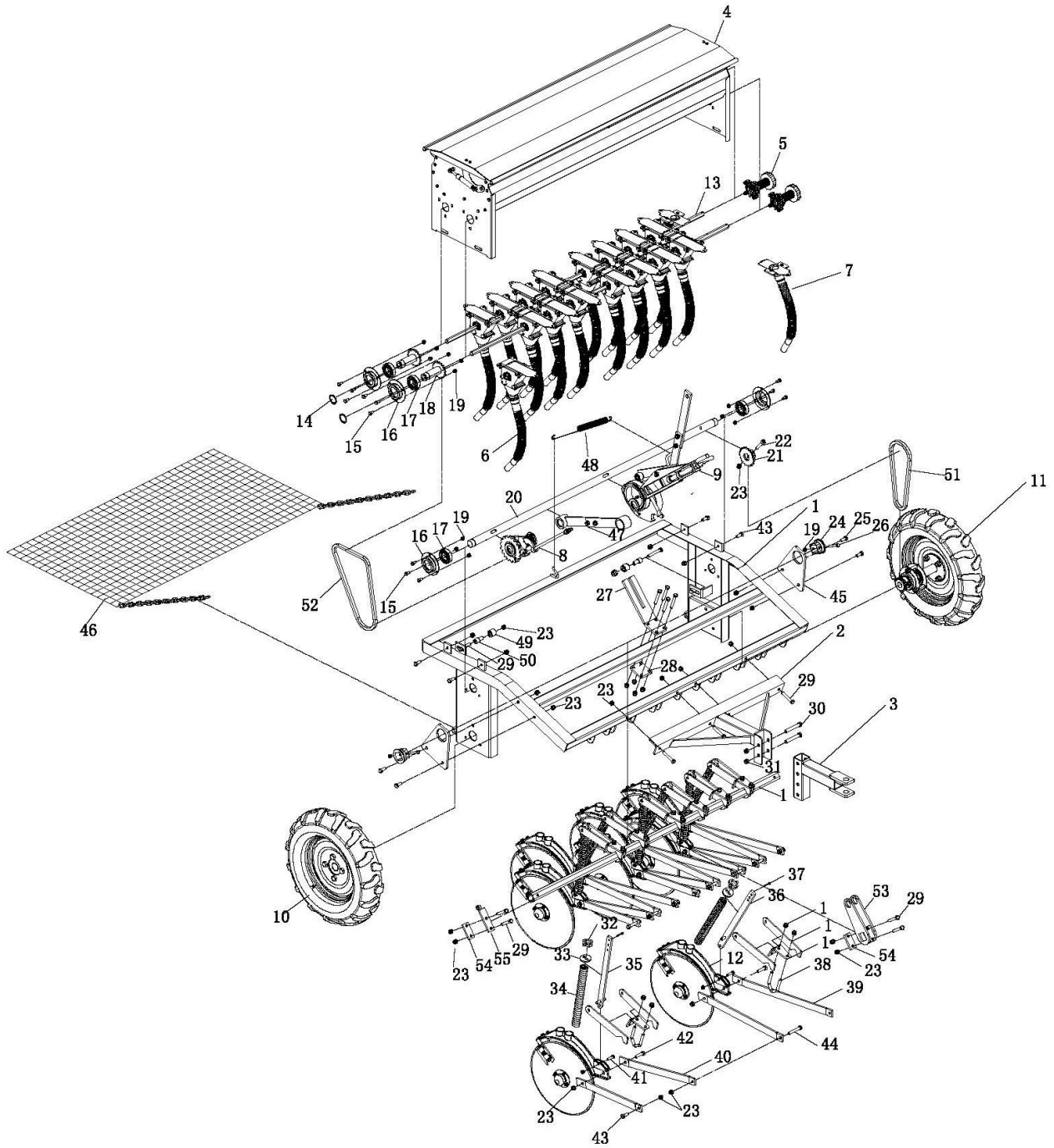
**Step #14:**

Take off the Drag Mat (#46), and pull the Handle component (#G11) to raise the coulter (#12) off the ground, then pull ahead.





# PART DIAGRAMS

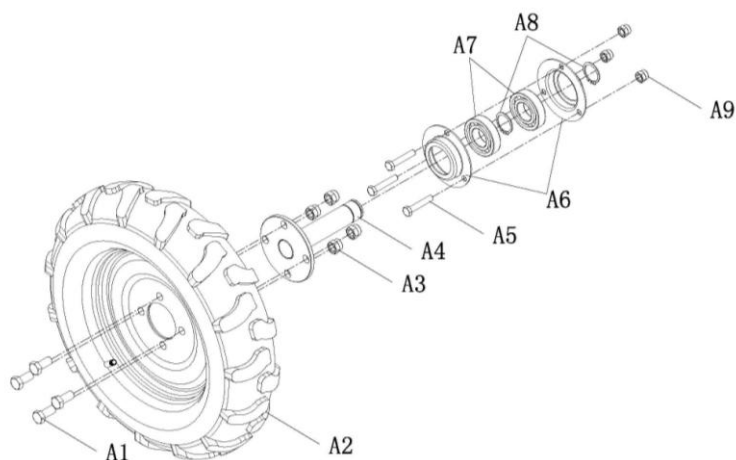


## Part List

Part #	Description	QTY	Part #	Description	QTY
1	Seeder Rack	1	29	Hex bolt M10*60	10
2	Support seat	1	30	Hex bolt M12*80	2
3	Connecting base	1	31	Hex Lock Nut M12	2
4	Hopper	1	32	Guiding pad	8
5	Adjustment for seeding	2	33	Block piece	8
6	Seeding component	16	34	Spring	8
7	Discharge component	2	35	Rod A for spring	4
8	Clutch component	1	36	Rod B for spring	4
9	Intermittent Component	1	37	Cotter Ø5*25	8
10	Right wheel component	1	38	U Bolt	8
11	Left wheel component	1	39	Adjusting plate A	8
12	Coulter	8	40	Adjusting plate B	8
13	Hexagon bearing	2	41	Hex bolt M8*35	8
14	Shaft ring Ø30	2	42	Hex bolt M10*40	8
15	Hex bolt M8*20	20	43	Hex bolt M10*25	8
16	Bearing housing	4	44	Hex bolt M10*65	6
17	Deep groove ball bearing	4	45	Fixed plate for square shaft	2
18	Hexagonal shaft sprocket part	2	46	Drag Mat	1
19	Hex Lock Nut M8	30	47	Pull plate	1
20	Circular shaft	1	48	Tension spring for handle	1
21	Circular shaft sprocket part	1	49	Tensioning wheel	2
22	Hexagon socket head cap screw	1	50	Tensioning wheel bushing	2
23	Hex Lock Nut M10	38	51	Chain A	1
24	Square shaft sheath	2	52	Chain B	1
25	Hex bolt M10*30	6	53	Intermittent Transmission components	1
26	Hex bolt M8*55	2	54	Lift arm	2
27	Screw support plate	1	55	Clutch lift component	1
28	Fixed plate	1			

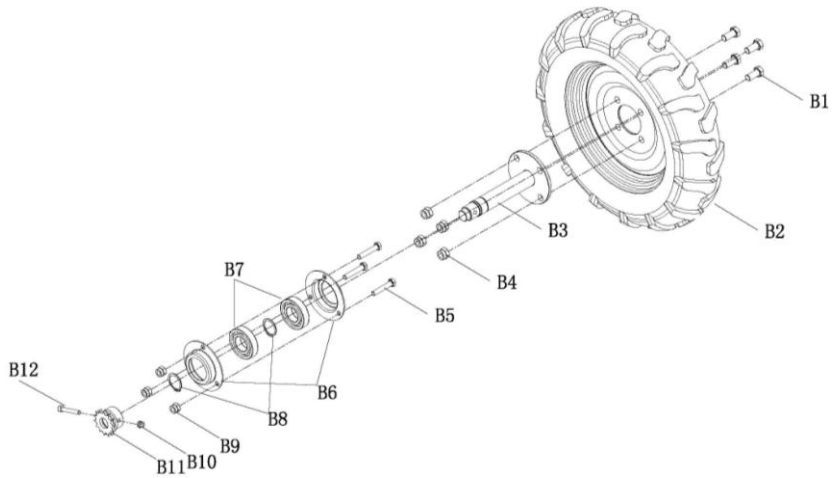
## Left Wheel Component Diagram

Part #	Description	QTY
A1	Hex bolt M14*25	4
A2	Tire	1
A3	Hex Lock Nut M14	4
A4	Fixed base A for tire	1
A5	Hex bolt M10*55	3
A6	Bearing housing	2
A7	Deep groove ball bearing	2
A8	Shaft ring Ø35	2
A9	Hex Lock Nut M10	3



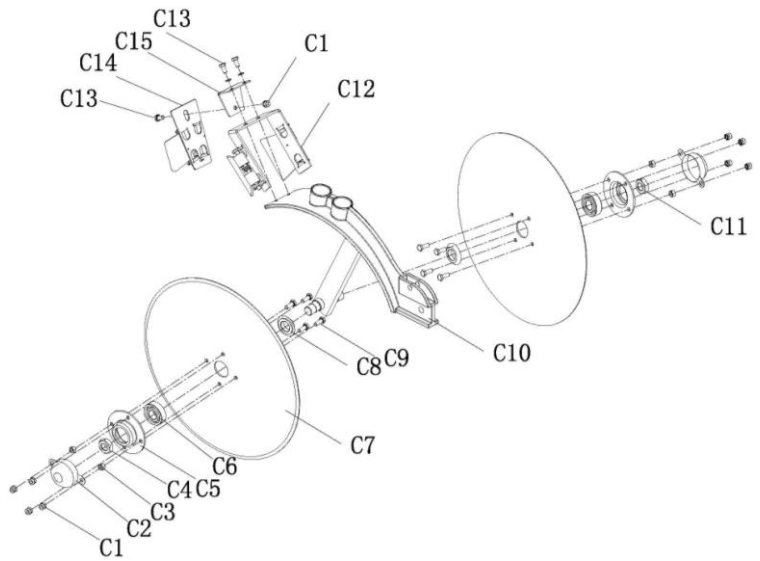
## Right Wheel Component Diagram

Part #	Description	QTY
B1	Hex bolt M14*25	4
B2	Tire	1
B3	Fixed base B for tire	1
B4	Hex Lock Nut M14	4
B5	Hex bolt M10*55	3
B6	Bearing housing	2
B7	Deep groove ball bearing	2
B8	Shaft ring Ø35	2
B9	Hex Lock Nut M10	3
B10	Hex Lock Nut M8	1
B11	Chain wheel	1
B12	Hexagon socket head cap screw	1



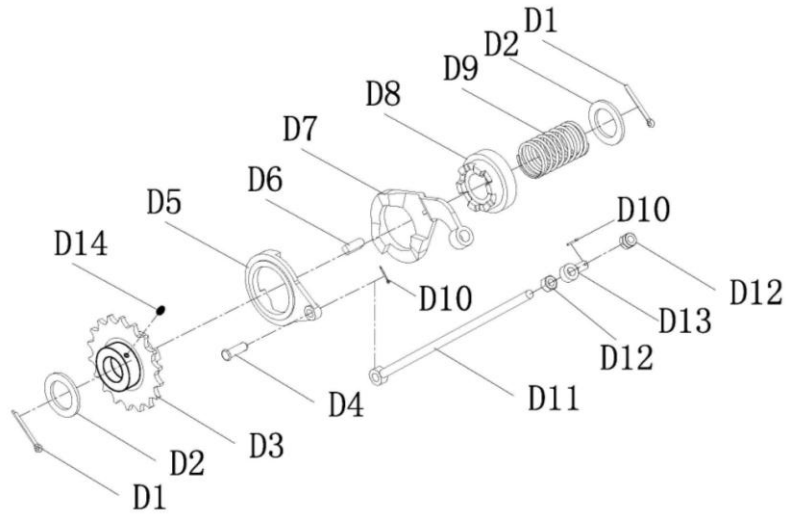
## Coulter Diagram

Part #	Description	QTY
C1	Hex Lock Nut M6	8
C2	Dust cap	2
C3	Nut	4
C4	External hexagon nut	1
C5	Bearing housing	2
C6	Deep groove ball bearing	2
C7	Disc	2
C8	Sealing washer	2
C9	Hex bolt M6*16	8
C10	Coulter welding part	1
C11	Thin hexagon nut	1
C12	Outside scraping clay plate	1
C13	Hex bolt M6*12	1
C14	Inside scraping clay plate	1
C15	Fixed base for the Inside scraping clay plate	1



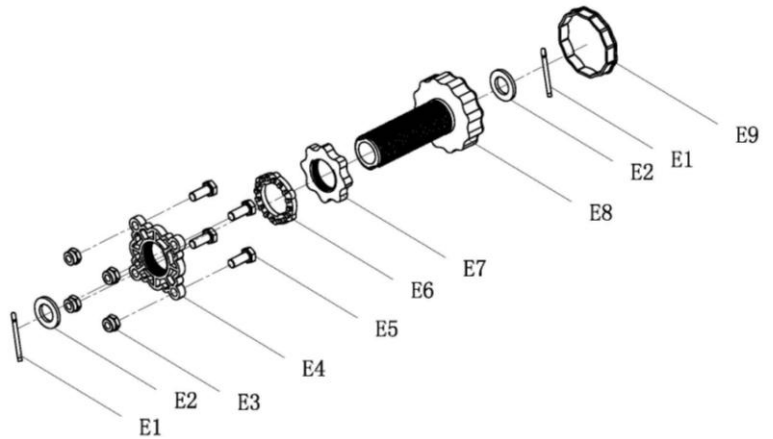
## Clutch Component Diagram

Part #	Description	QTY
D1	Cotter Ø5*45	2
D2	Flat	2
D3	Chain wheel	1
D4	Round pin Ø10*30	1
D5	Master spoon	1
D6	Flat key	1
D7	Subordinate spoon	1
D8	Clutch	1
D9	Spring	1
D10	Cotter Ø2*16	2
D11	Threaded rod	1
D12	Hex Lock Nut M10	2
D13	Connecting Part	1
D14	Oil zerk	1



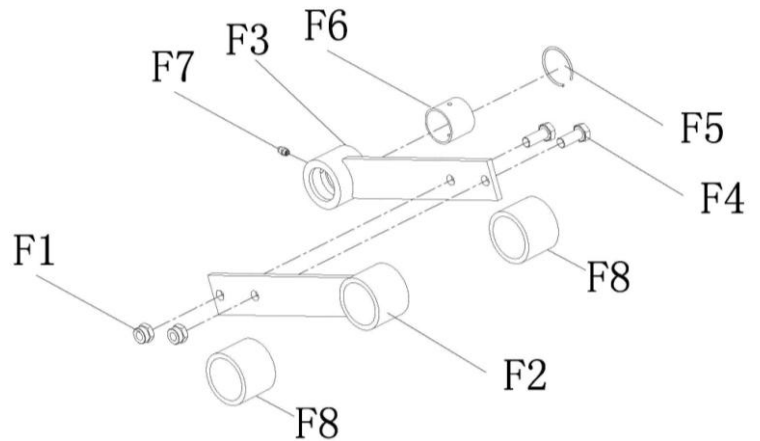
## Adjustment For Seeding Diagram

Part #	Description	QTY
E1	Flat Ø16	2
E2	Cotter Ø4*35	2
E3	Hex Lock Nut M8	4
E4	Nut retainer	1
E5	Hex bolt M8*20	4
E6	Check ring	1
E7	Locknut	1
E8	Control hand wheel	1
E9	Handwheel cover	1



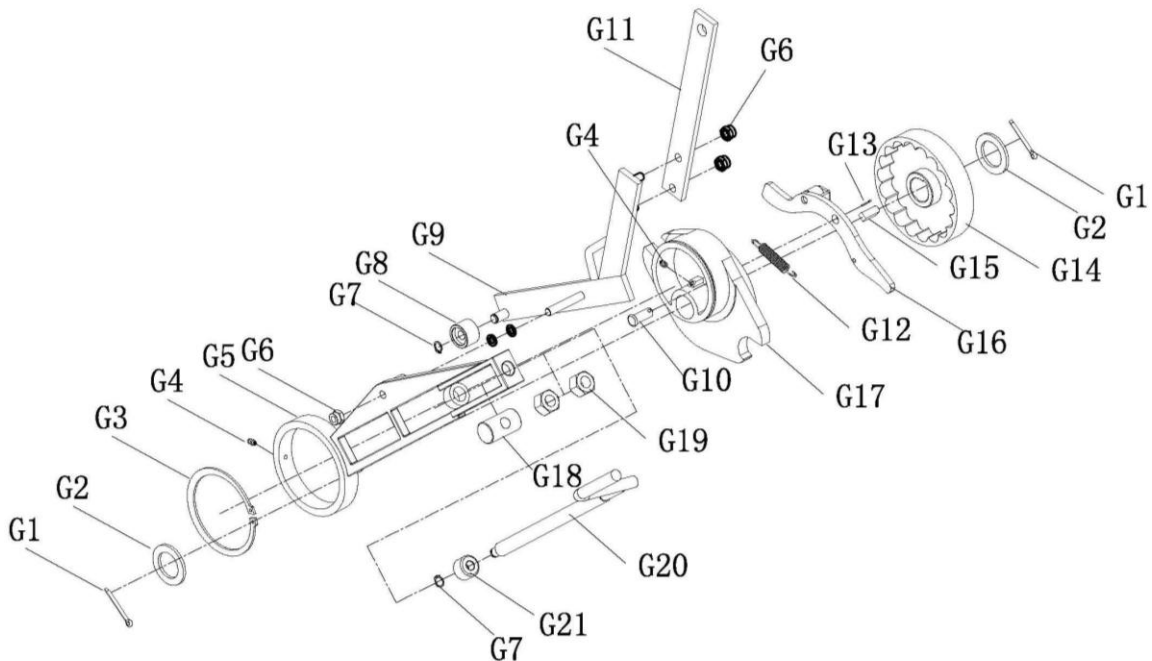
## Pull Plate Diagram

Part #	Description	QTY
F1	Hex Lock Nut M10	2
F2	Sleeve A	1
F3	Sleeve B	1
F4	Hex bolt M10*25	2
F5	Steel Cable Baffle Ring	1
F6	Bush	1
F7	Oil zerk	1
F8	Pipe	2



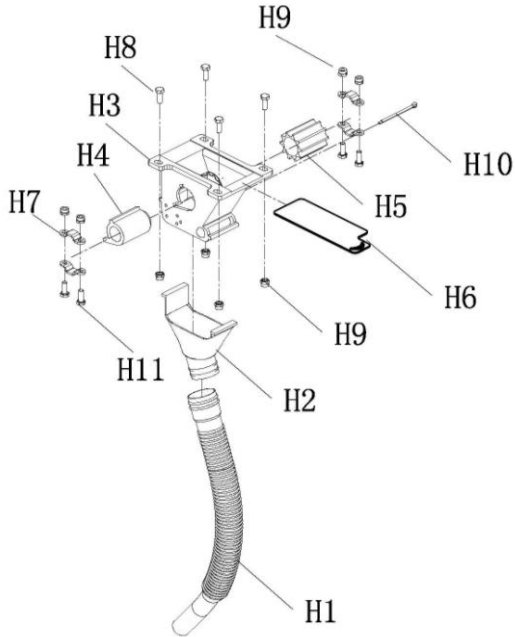
## Intermittent Components Diagram

Part #	Description	QTY	Part #	Description	QTY
G1	Cotter Ø5*45	2	G12	Tension spring	1
G2	Flat	2	G13	Cotter Ø2*16	1
G3	Shaft ring Ø110	1	G14	Intermittent driving components	1
G4	Oil zerk	2	G15	Flat key	1
G5	Intermittent transmission component	1	G16	Hook	1
G6	Hex Lock Nut M10	2	G17	Eccentric component	1
G7	Shaft ring Ø12	1	G18	Round pin of transmission rod	1
G8	Wheel	1	G19	Hex Nut M18	2
G9	Control Handle	1	G20	Transmission rod	1
G10	Round pin Ø12*30	1	G21	Transmission rod base	1
G11	Handle component	1			



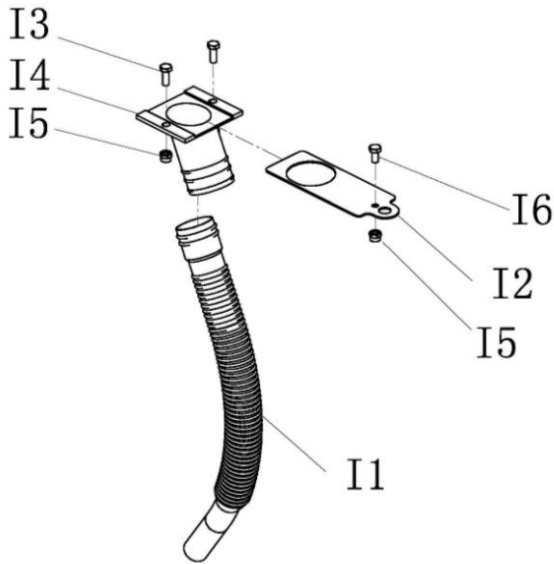
### Seeding Component Diagram

Part #	Description	QTY
H1	Seeding pipe	1
H2	Seeding funnel	1
H3	Seeding component	1
H4	Blocking part	1
H5	Seeding wheel	1
H6	Plate Cover	1
H7	Hexagonal axis bolt	4
H8	Hex bolt M6*16	4
H9	Hex Lock Nut M6	8
H10	Cotter Ø3*55	1
H11	Hex bolt M6*20	4



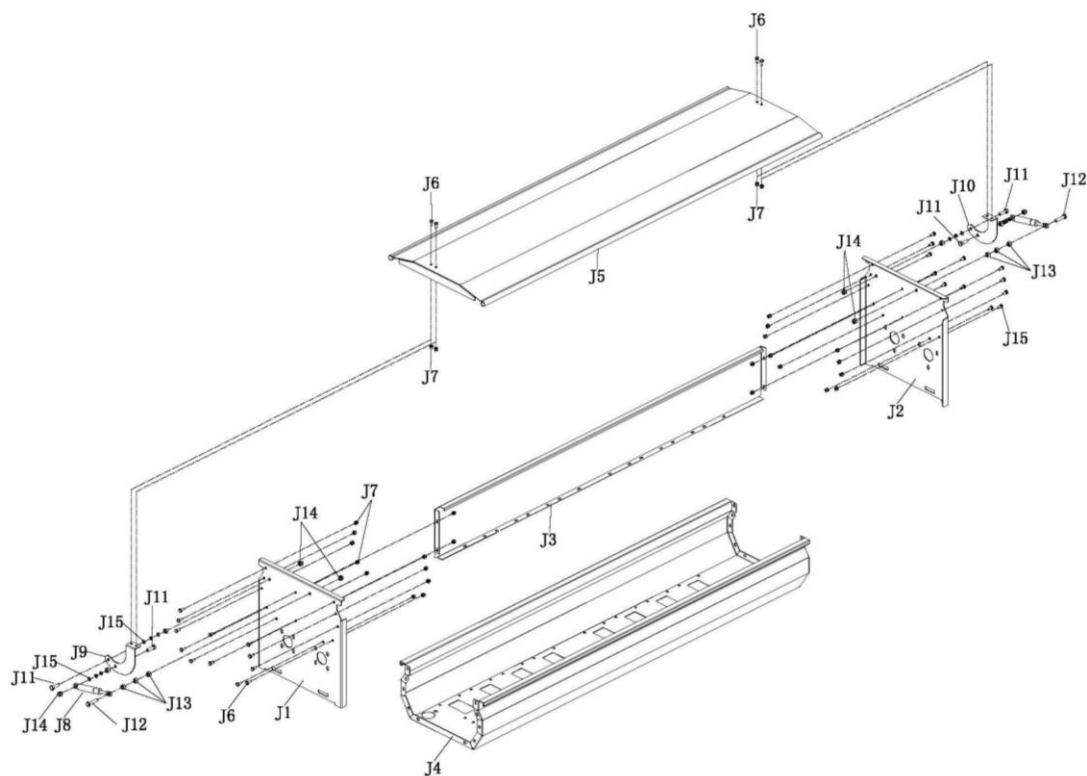
### Discharge component Diagram

Part #	Description	QTY
I1	Hose	1
I2	Hose Plate Covers	1
I3	Hex bolt M6*16	2
I4	Hose opening	1
I5	Hex Lock Nut M6	2
I6	Hex bolt M6*12	1



## Hopper Diagram

Part #	Description	QTY	Part #	Description	QTY
J1	Left side plate	1	J9	Left plate	1
J2	Right side plate	1	J10	Right plate	1
J3	Clashboard	1	J11	Hex bolt M8*25	4
J4	Hopper body	1	J12	Hex bolt M8*35	2
J5	Hopper Cover	1	J13	Hex nut M8	10
J6	Hex bolt M6*12	28	J14	Hex Lock Nut M8	6
J7	Hex Lock Nut M6	28	J15	Flat washer Ø8	6
J8	Gas spring	2			



For technical questions, Please call 218-943-6296

### WARRANTY

One-year limited parts warranty.



TG  
PO BOX 203  
Miltona, MN 56354  
MADE IN CHINA