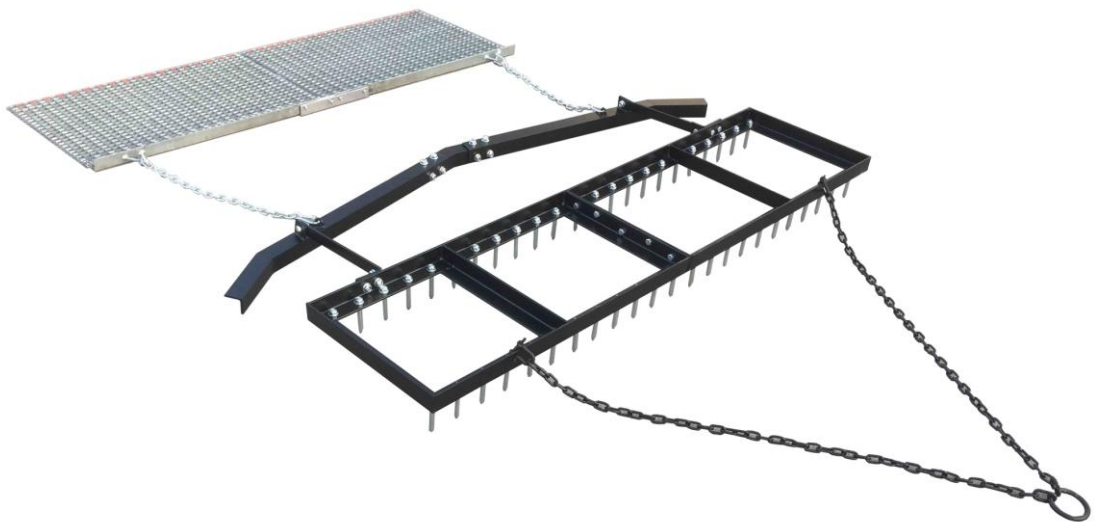




# Spike Drag

## OWNER'S MANUAL



### **WARNING:**

Read carefully and understand all **ASSEMBLY AND OPERATION INSTRUCTIONS** before operating. Failure to follow the safety rules and other basic safety precautions may result in serious personal injury.

**MODEL # YTF-618SDLBDM**

Thank you very much for choosing this product! For future reference, please complete the owner's record below:

Model: \_\_\_\_\_ Purchase Date: \_\_\_\_\_

Save the receipt, warranty, and these instructions. It is important that you read the entire manual to become familiar with this product before you begin using it.

This product is designed for certain applications only. The manufacturer cannot be responsible for issues arising from modification. We strongly recommend this product not be modified and/or used for any application other than that for which it was designed. If you have any questions relative to a particular application, DO NOT use the product until you have first contacted us to determine if it can or should be performed on the product.

For technical questions please call **1-218-943-6296**.

## GENERAL SAFETY RULES



**WARNING:** Read and understand all instructions. Failure to follow all instructions listed below may result in serious injury.



**CAUTION:** Do not allow persons to operate or assemble this Spike Drag until they have read this manual and have developed a thorough understanding of how the spike drag works.



**WARNING:** The warnings, cautions, and instructions discussed in this instruction manual cannot cover all possible conditions or situations that could occur. It must be understood by the operator that common sense and caution are factors that cannot be built into this product, but must be supplied by the operator.

## SAVE THESE INSTRUCTIONS

## WORK AREA

- **Keep work area clean**, free of clutter, and well-lit. Cluttered and dark work areas can cause accidents.
- **Keep children and bystanders** away while operating the Spike Drag. Distractions can cause you to lose control, so visitors should remain at a safe distance from the work area.
- **Be aware of all power lines, electrical circuits**, water pipes, and other mechanical hazards in your work area, particularly those hazards below the work surface hidden from the operator's view that you may make unintentional contact with and may cause personal harm or property damage.
- **Be alert of your surroundings.**

## PERSONAL SAFETY

- **Stay alert**, watch what you are doing, and use common sense when using a spike drag. Do not use a spike drag while you are tired or under the influence of drugs, alcohol, or medication. A moment of inattention while operating a spike drag may result in serious personal injury.
- **Dress properly.** Do not wear loose clothing, dangling objects, or jewelry. Keep your hair, clothing, and gloves away from moving parts.
- **Use safety apparel and equipment.** This applies to all persons in the work area. Use safety glasses, non-skid safety shoes, hardhat, gloves, dust collection systems, and hearing protection when needed.
- **Do not have passengers** on the tow vehicle when pulling the Spike Drag.
- **Do not turn too short when pulling the Spike Drag.** Turning too short can result in the Spike Drag catching on your ATV tire and possible injury to the operator.

## SPIKE DRAG USE AND CARE

- **Do not modify the Spike Drag in any way.** Unauthorized modification may impair the function and/or safety and could affect the life of the equipment. There are specific applications for which the Spike Drag was designed.
- **Always check for damaged or worn out parts before using the Spike Drag.** Broken parts will affect the Spike Drag operation. Replace or repair damaged or worn parts immediately.
- **Store idle spike drag.** When the Spike Drag is not in use, store it in a secure place out of the reach of children. Inspect it for good working condition prior to storage and before re-use.

# ASSEMBLY

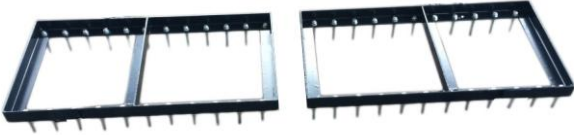


FIGURE 1

**Step #1:**  
Connect two frame sections (#3) together using 5 bolts (#5), 5 washers (#15), and 5 nuts (#14).  
See *FIGURE 1*



FIGURE 2

**Step #2:**  
Connect black ring and 2 chains (#1) to frame using black U-bolts (#2).  
See *FIGURE 2*



FIGURE 3

**Step #3:**  
Connect V-Bar arms (#4) to black V bar bracket (#5) using 8 bolts (#13), 8 washers (#15), and 8 nuts (#14).  
See *FIGURE 3*

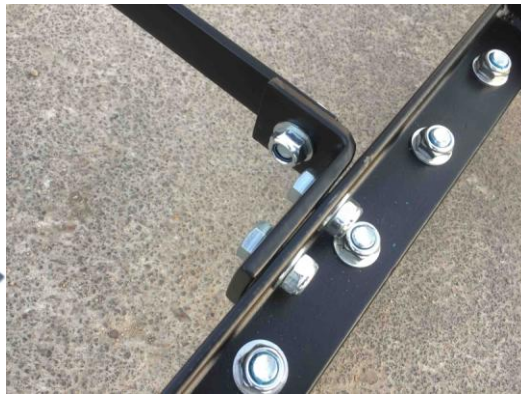


**FIGURE 4**

**Step #4:**

Connect V-Bar arms (#4) to black straight bracket (#6) and L-Brackets (#7) using 4 bolts (#13), 4 washers (#15), and 4 nuts (#14).

See **FIGURE 4**



**FIGURE 5**

**Step #5:**

Connect L-bracket (#7) to black straight bracket (#6) and to frame (#3) using 4 bolts (#13), 4 washers (#15), and 4 nuts (#14).

See **FIGURE 5**



**FIGURE 6**

**Step #6:**

Connect two drag mats (#8) with straight bracket (#10) by using 4 bolts (#16), 4 washers (#19), and 4 nuts (#18) and 2 bolts (#17), 2 washers (#19) and 2 nuts (#18).

See **FIGURE 6**



FIGURE 7

FIGURE 8

**Step #7:**

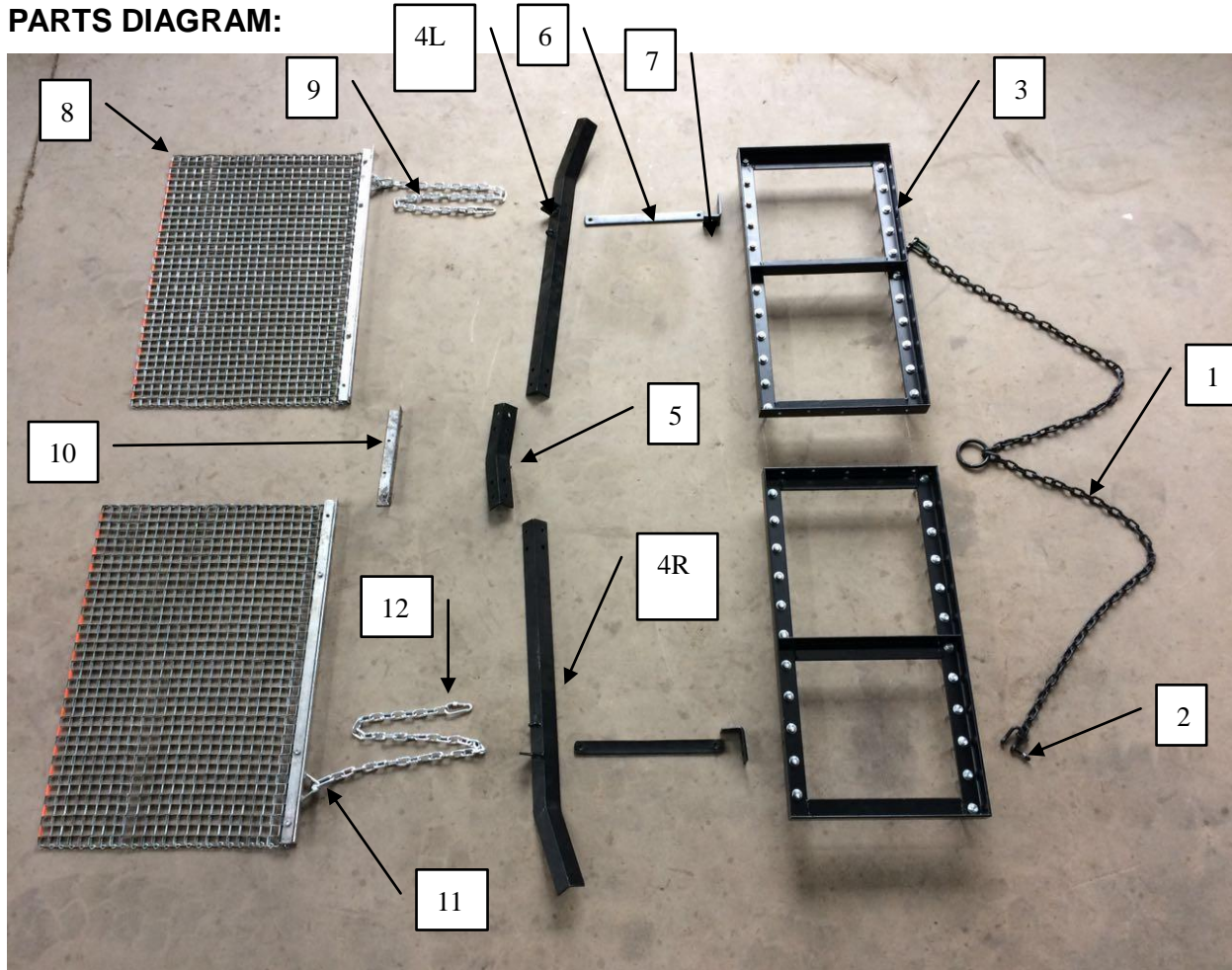
**Connect two drag mats (#8) to main V-Bar arms (#4) by using 2 U-bolts (#11) and 2 carabiners (#12).**

**See FIGURES 7 & 8**

## **MAINTENANCE**

- **Maintain your spike drag.** It is recommended that the general condition of any spike drag be examined before it is used. Keep your spike drag in good repair by adopting a program of conscientious repair and maintenance. If any abnormal vibrations or noise occurs, have the problem corrected before further use. Have necessary repairs made by qualified service personnel.

**PARTS DIAGRAM:**



**PARTS LIST:**

Part #	Part Description	Quantity
1	Black Ring & 2 Chains	1
2	Black U-Bolts (M8)	2
3	Frame	2
4L	V-Bar Arms Left Side	1
4R	V-Bar Arms Right Side	1
5	Black V-Bracket	1
6	Black Straight Brackets	2
7	L-Brackets	2
8	Drag Mat	2
9	Drag Mat Chain	2
10	Straight Bracket	1
11	U-Bolts (M8)	2
12	Carabiner (70mm)	2
13	M12 x 25mm bolt	21
14	M12 Nylon Lock Nuts	21
15	M12 Washer	21
16	M8 x 20mm bolt	4
17	M8 x 45mm bolt	2
18	M8 Nylon Lock Nuts	6
19	M8 Washer	6

For technical questions, please call **1-218-943-6296**.

## **WARRANTY**

**One-year limited parts warranty**



TG  
PO BOX 203  
Miltona, MN 56354

Made in China