

# METAL MAN<sup>®</sup>

## WORK GEAR

### DELUXE FOLDING WELD TABLE

#### OWNER'S MANUAL



9/2018



#### **WARNING:**

Read carefully and understand all **ASSEMBLY AND OPERATION INSTRUCTIONS** before operating. Failure to follow the safety rules and other basic safety precautions may result in serious personal injury.

# WARRANTY

## METAL MAN WORK GEAR CO

EFFECTIVE JANUARY 1, 2013

### LIMITED WARRANTY

This warranty applies to the original purchaser and is subject to the terms and conditions listed below. This Limited Warranty is for new equipment sold after the above date, providing coverage for defects in material and workmanship at the time it is shipped from the factory.

Limited to the warranty periods below, Metal Man Work Gear Co will repair or replace the item under warranty that fails due to defects in material and workmanship. Metal Man Work Gear must be notified within 30 days of the failure, so as to provide instructions on how to proceed with the repair of your welder and warranty claim processing. Warranty period begins at the time the welder is purchased from and Authorized Reseller of Metal Man Work Gear Co. products. **Keep your receipt as proof of purchase.**

#### Warranty Periods

Limited Warranty is divided into three categories. No Warranty, 90 days, 1 year and 3 year.

#### No Warranty

Normal wear items, MIG gun parts (contact tips, nozzle, contact tip adapter, MIG gun liner), drive roll, electrode holder, ground clamps, Plasma torch parts (nozzle, electrode, diffuser, cover) are considered consumable items and are not covered under warranty.

#### 90 days

Parts for Metal Man Work Gear welding carts and welding cabinets. This warranty covers the absence of or defective parts.

#### 1 year

Parts and Labor on MIG gun parts (except those listed under normal wear items), cables, regulator, and plasma torch (except those listed under normal wear items). Any shipping related to warranty repair is the responsibility of the customer.

#### 1 year/3 year

Please see your product information to determine if your product has a 1 year or 3 year warranty. This warranty covers parts and Labor on items such as: transformer, reactor, rectifier, solenoid valve, PC Board, switches, controls, gas valve, drive motor, drive system other than drive roll and any other component that requires the removal of the sheet metal to access. Any shipping related to warranty repair is the responsibility of the customer.

#### Voiding Warranty

Warranty does not apply to: Shipping Damage, Misuse and abuse of the unit, alteration of the unit in any way.

#### Warranty Claim

This is a parts and labor warranty. **Do not return your unit to the retailer you purchased it from.** Retain your receipt in the case a warranty claim is needed. No warranty will be provided without the original receipt from an authorized reseller of Metal Man Work Gear Products. To make a warranty claim, call our welder help line at 888-762-4045, M-F 8:00 am to 5:00 PM Central time or email sales@metalmangear.com.

## GENERAL SAFETY RULES



**WARNING:** Read and understand all instructions. Failure to follow all instructions listed below may result in serious injury.



**CAUTION:** Do not allow persons to operate or assemble this Flux Core 125 until they have read this manual and have developed a thorough understanding of how the Flux Core 125 works.



**WARNING:** The warnings, cautions, and instructions discussed in this instruction manual cannot cover all possible conditions or situations that could occur. It must be understood by the operator that common sense and caution are factors which cannot be built into this product, but must be supplied by the operator.

## SAVE THESE INSTRUCTIONS

### IMPORTANT SAFETY CONSIDERATIONS

#### 1.1 Your Welding Environment

- Keep the environment you will be welding in free from flammable materials.
- Always keep a fire extinguisher accessible to your welding environment.
- Always have a qualified person install and operate this equipment.
- Make sure the area is clean, dry and ventilated. Do not operate the welder in humid, wet or poorly ventilated areas.
- Always have your welder maintained by a qualified technician in accordance with local, state and national codes.
- Always be aware of your work environment. Be sure to keep other people, especially children, away from you while welding.
- Keep harmful arc rays shielded from the view of others.
- Mount the welder on a secure bench or cart that will keep the welder secure and prevent it from tipping over or falling.

#### 1.2 Your Welder's Condition

- Check ground cable, power cord and welding cable to be sure the insulation is not damaged. Always replace or repair damaged components before using the welder.
- Check all components to ensure they are clean and in good operating condition before use.

#### 1.3 Use of Your Welder

##### **CAUTION**

Do not operate the welder if the output cable, electrode, torch, wire or wire feed system is wet. Do not immerse them in water. These components and the welder must be completely dry before attempting to use them.

- Follow the instructions in this manual.
- Keep welder in the off position when not in use.
- Connect ground lead as close to the area being welded as possible to ensure a good ground.
- Do not allow any body part to come in contact with the welding wire if you are in contact with the material being welded, ground or electrode from another welder.
- Do not weld if you are in an awkward position. Always have a secure stance while welding to prevent accidents. Wear a safety harness if working above ground.
- Do not drape cables over or around your body.
- Wear a full coverage helmet with appropriate shade (see ANSI Z87.1 safety standard) and safety glasses while welding.
- Wear proper gloves and protective clothing to prevent your skin from being exposed to hot metals, UV and IR rays.
- Do not overuse or overheat your welder. Allow proper cooling time between duty cycles.
- Keep hands and fingers away from moving parts and stay away from the drive rolls.
- Do not point MIG gun at any body part of yourself or anyone else.
- Always use this welder in the rated duty cycle to prevent excessive heat and failure.

#### 1.4 Specific Areas of Danger, Caution or Warning



##### Electrical Shock

##### ▲ WARNING

Electric arc welders can produce a shock that can cause injury or death. Touching electrically live parts can cause fatal shocks and severe burns. While welding, all metal components connected to the wire are electrically hot. Poor ground connections are a hazard, so secure the ground lead before welding.

- Wear dry protective apparel: coat, shirt, gloves and insulated footwear.
- Insulate yourself from the work piece. Avoid contacting the work piece or ground.
- Do not attempt to repair or maintain the welder while the power is on.
- Inspect all cables and cords for any exposed wire and replace immediately if found.
- Use only recommended replacement cables and cords.
- Always attach ground clamp to the work piece or work table as close to the weld area as possible.
- Do not touch the welding wire and the ground or grounded work piece at the same time.
- Do not use a welder to thaw frozen pipes.



##### Fumes and Gases

##### ▲ WARNING

- Fumes emitted from the welding process displace clean air and can result in injury or death.
- Do not breathe in fumes emitted by the welding process. Make sure your breathing air is clean and safe.
- Work only in a well-ventilated area or use a ventilation device to remove welding fumes from the environment where you will be working.
- Do not weld on coated materials (galvanized, cadmium plated or containing zinc, mercury or barium). They will emit harmful fumes that are dangerous to breathe. If necessary use a ventilator, respirator with air supply or remove the coating from the material in the weld area.
- The fumes emitted from some metals when heated are extremely toxic. Refer to the material safety data sheet for the manufacturer's instructions.
- Do not weld near materials that will emit toxic fumes when heated. Vapors from cleaners, sprays and degreasers can be highly toxic when heated.



### UV and IR Arc Rays

#### **⚠ DANGER**

The welding arc produces ultraviolet (UV) and infrared (IR) rays that can cause injury to your eyes and skin. Do not look at the welding arc without proper eye protection.

- Always use a helmet that covers your full face from the neck to top of head and to the back of each ear.
- Use a lens that meets ANSI standards and safety glasses. For welders under 160 Amps output, use a shade 10 lens; for above 160 Amps, use a shade 12. Refer to the ANSI standard Z87.1 for more information.
- Cover all bare skin areas exposed to the arc with protective clothing and shoes. Flame-retardant cloth or leather shirts, coats, pants or coveralls are available for protection.
- Use screens or other barriers to protect other people from the arc rays emitted from your welding.
- Warn people in your welding area when you are going to strike an arc so they can protect themselves.



### Fire Hazards

#### **⚠ WARNING**

Do not weld on containers or pipes that contain or have had flammable, gaseous or liquid combustibles in them. Welding creates sparks and heat that can ignite flammable and explosive materials.

- Do not operate any electric arc welder in areas where flammable or explosive materials are present.
- Remove all flammable materials within 35 feet of the welding arc. If removal is not possible, tightly cover them with fireproof covers.
- Take precautions to ensure that flying sparks do not cause fires or explosions in hidden areas, cracks or areas you cannot see.
- Keep a fire extinguisher close in the case of fire.
- Wear garments that are oil-free with no pockets or cuffs that will collect sparks.
- Do not have on your person any items that are combustible, such as lighters or matches.
- Keep work lead connected as close to the weld area as possible to prevent any unknown, unintended paths of electrical current from causing electrical shock and fire hazards.
- To prevent any unintended arcs, cut wire back to ¼" stick out after welding.

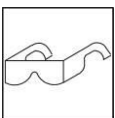


### Hot Materials

#### **⚠ CAUTION**

Welded materials are hot and can cause severe burns if handled improperly.

- Do not touch welded materials with bare hands.
- Do not touch MIG gun nozzle after welding until it has had time to cool down.



### Sparks/Flying Debris

#### **⚠ CAUTION**

Welding creates hot sparks that can cause injury. Chipping slag off welds creates flying debris.

- Wear protective apparel at all times: ANSI-approved safety glasses or shield, welder's hat and ear plugs to keep sparks out of ears and hair.



### Electromagnetic Field

#### ⚠ CAUTION

-Electromagnetic fields can interfere with various electrical and electronic devices such as pacemakers.

- Consult your doctor before using any electric arc welder or cutting device
- Keep people with pacemakers away from your welding area when welding.
- Do not wrap cable around your body while welding.
- Wrap MIG gun and ground cable together whenever possible.
- Keep MIG gun and ground cables on the same side of your body.



### Shielding Gas Cylinders Can Explode

#### ⚠ WARNING

High pressure cylinders can explode if damaged, so treat them carefully.

- Never expose cylinders to high heat, sparks, open flames, mechanical shocks or arcs.
- Do not touch cylinder with MIG gun.
- Do not weld on the cylinder
- Always secure cylinder upright to a cart or stationary object.
- Keep cylinders away from welding or electrical circuits.
- Use the proper regulators, gas hose and fittings for the specific application.
- Do not look into the valve when opening it.
- Use protective cylinder cap whenever possible

### 1.5 Proper Care, Maintenance and Repair

#### ⚠ DANGER

- Always have power disconnected when working on internal components.
- Do not touch or handle PC board without being properly grounded with a wrist strap. Put PC board in static proof bag to move or ship.
- Do not put hands or fingers near moving parts such as drive rolls of fan

## USE AND CARE

- **Do not modify this unit in any way.** Unauthorized modification may impair the function and/or safety and could affect the life of the equipment. There are specific applications for which this unit was designed.
- **Always check of damaged or worn out parts before using this unit.** Broken parts will affect the operation. Replace or repair damaged or worn parts immediately.
- **Store idle.** When this unit is not in use, store it in a secure place out of the reach of children. Inspect it for good working condition prior to storage and before re-use.

## SPECIFICATIONS

Item	Description
Overall Dimensions	36 in. x 20 in. x 36 in. (In Use)
	36 in. x 10 in. x 43-1/2 in. (When Folded)
Work Surface	36 in. x 20 in.
Product Weight	43 lbs.
Load Capacity	110 lbs.

# DESCRIPTION

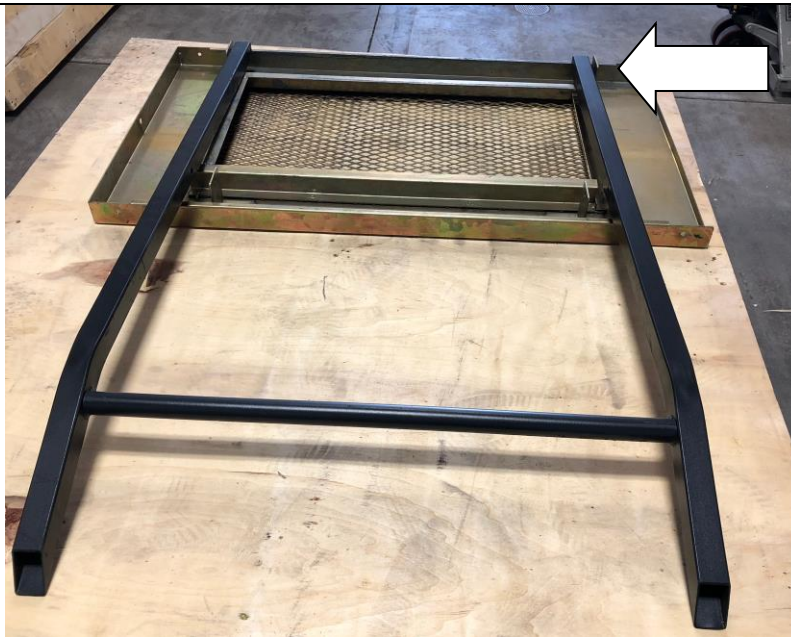
The Metal Man Folding Weld Table provides a quick and easy work surface for welding projects. Designed to quickly and easily fold up, this weld table provides a flexible work surface and is easy to store. The work surface measures 36 inches wide and 20 inches deep. In the middle of the work surface is a heavy wire grate designed to allow debris to fall through to the removable collection tray below. The Folding Weld Table is perfect for mobile welding applications, maintenance departments or anywhere space is a premium.



## ASSEMBLY



Place the table work surface upside down on a stable surface.



Take the longer of the two table legs and place on top of the table work surface to align with the wider set of pivot clips on the table work surface. Table leg ends should be pointing down.

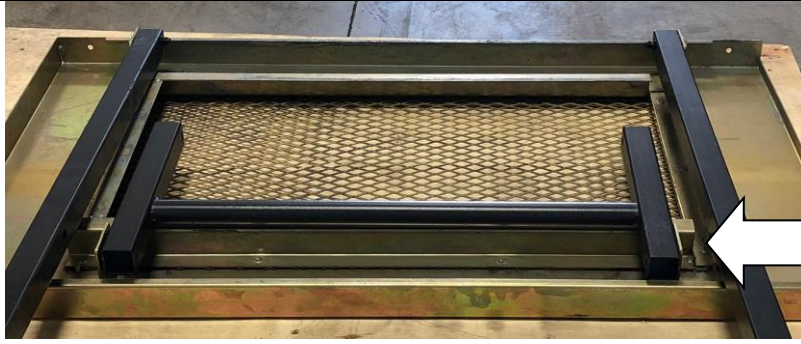


Install the hardware through the hole in the pivot clip and the hole through the leg. Hand-tighten only, tighten only after table assembly is complete.

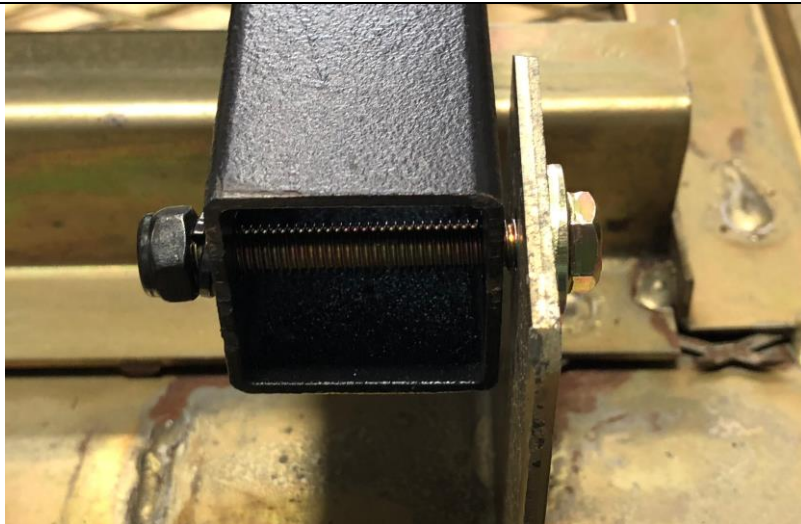
Hex head bolt M6x45MM  
Thick Flat Washer 6  
Lock Washer 6  
Hex Head Lock Nut M6

Repeat for both sides.





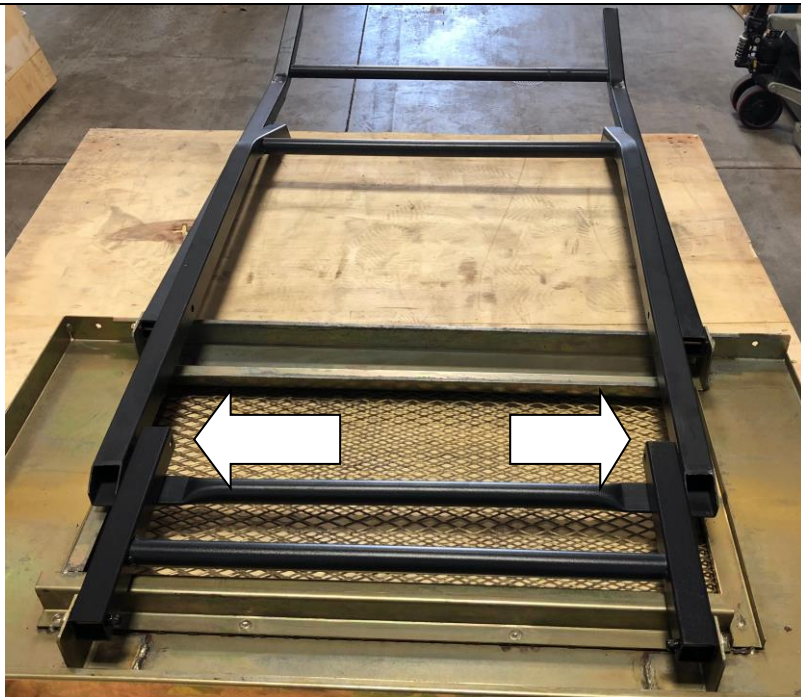
**Align short table leg extension with the other set of pivot clips.**



**Install the hardware through the hole in the pivot clip and the hole through the leg. Hand-tighten only, tighten only after table assembly is complete.**

**Hex head bolt M6x45MM  
Thick Flat Washer 6  
Lock Washer 6  
Hex Head Lock Nut M6**

**Repeat for both sides.**



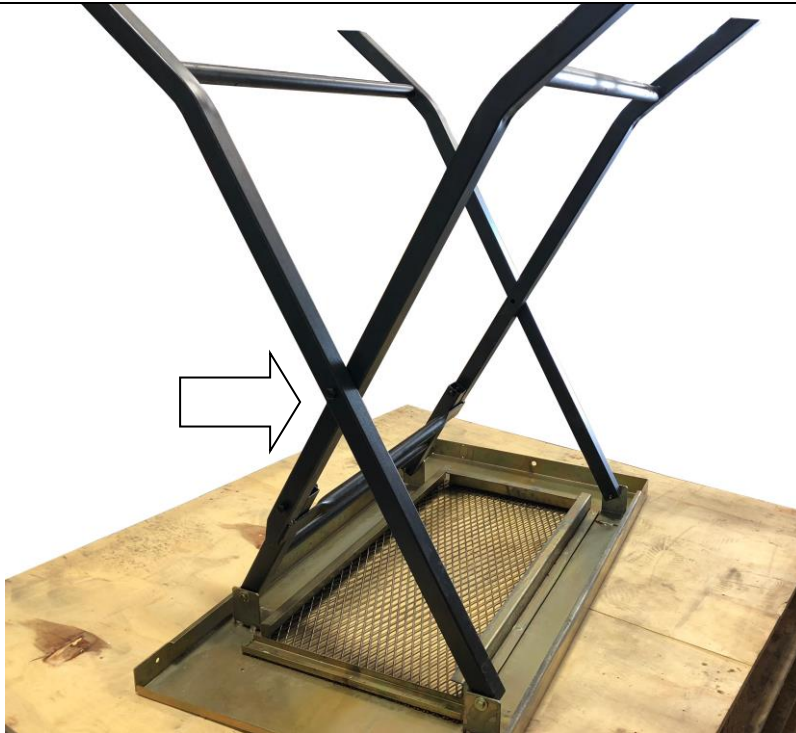
**Flip the attached longer table legs over so the feet are pointing up. Then lay in place the short table leg under the short table leg extension assembly to align mounting holes. Make certain the ends of the short table legs are pointing down.**



Install the hardware through the mounting hole in the short table leg and the mounting hole through short table leg extension. Hand-tighten only, tighten only after table assembly is complete.

Hex head bolt M8x75MM  
Nylon Flat Washer  
Lock Washer 8  
Hex Head Lock Nut M8

Repeat for both sides.



Raise both legs until the pre-drilled holes in both legs line up.



Install the hardware through the hole in both legs. Hand-tighten only, tighten only after table assembly is complete.

Hex head bolt M8x75MM  
Nylon Flat Washer  
Lock Washer 8  
Hex Head Lock Nut M8



Place the removable slag tray on a sturdy surface, with the flat side (bottom) up.



Place the slag tray handle to align with the predrilled holes in the slag tray. Put a flat washer 6 on the M6 x 12MM hex head bolt and push through the holes in the handle and the tray.



Flip the tray assembly over and add the hardware to the bolt.

Flat Washer 6  
Lock Washer 6  
Hex Head Nut M6

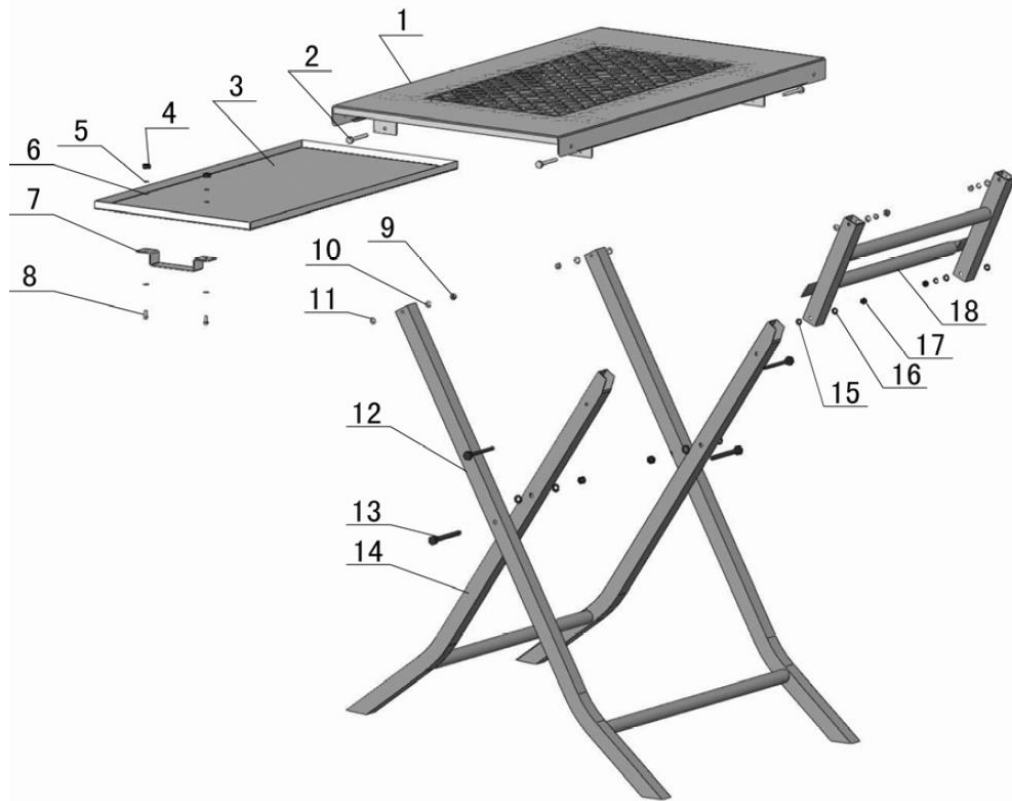
Repeat for both sides.



**Insert slag tray into the bottom of the table work surface.**

**Go back through all hardware connections and securely tighten.**

## DIAGRAM & PARTS LIST



Reference #	Part#	Description	Qty.
1	105100167	TABLE WORK SURFACE	1
2	105100168	HEX HEAD BOLT M6 X 45MM	4
3	105100169	REMOVABLE SLAG DRAWER	1
4	105100031	HEX HEAD NUT M6	2
5	105100032	LOCK WASHER 6	2
6	105100033	FLAT WASHER 6	4
7	105100170	SLAG TRAY HANDLE	1
8	105100171	BOLT M6 X 12 MM	2
9	105100172	HEX HEAD LOCK NUT M6	4
10	105100011	LOCK WASHER 6	4
11	105100173	THICK FLAT WASHER 6	4
12	105100174	LONG TABLE LEG	1
13	105100050	HEX HEAD BOLT M8 X 75MM	4
14	105100175	SHORTER TABLE LEG	1
15	105100176	NYLON FLAT WASHER	4
16	105100177	FLAT WASHER 8	4
17	105100178	HEX HEAD LOCK NUT M8	4
18	105100179	SHORT TABLE LEG EXTENSION ASSEMBLY	1

For replacement parts or technical questions, please contact our welder help line at **1-888-762-4045**.

**METAL MAN<sup>®</sup>**  
**WORK GEAR**

METAL MAN WORK GEAR COMPANY  
1760 PROSPECT CT #120  
APPLETON WI 54914  
[www.metalmangear.com](http://www.metalmangear.com)  
Made in China