



10000lb.Winch

User Manual & Operating Instructions

Performance Specifications

Max Line Pull

10000lbs.(4536kgs)

Gear reduction ratio

253:1

Motor

Series wound DC12V motor with 2.8hp output

Overall Dimensions

22.9in.(582mm) L × 6.9in.(175mm) W × 8.94in.(227mm) H

Drum size

2.48in.(63mm) D × 8.54in.(217mm) L

Remote Controller

Max control distance 30m

Rope

82ft.(25.0m) L of 25/64in.(10mm) D

Net weight

69.7lbs.(31.6kgs)

Product Overview

This winch is equipped with a series wound motor and is designed for intermittent duty general use. This winch is not to be used for industrial lifting or moving people. Improper operation could damage the winch and void the warranty. Free spool clutch is operated by a pull and turn knob, which disengages the gearbox, allowing the cable to be released.

INSTALLATION

Correct installation of the winch is required for proper operation.

- Mount the winch on the vehicle or other fixed installation by using a screw (M10×1.5×35mm), M10 nut, Ø10 flat washer and Ø10 spring washer (four sets).

WARNING: This winch must be mounted with the cable in an under wound direction. Improper mounting could damage the winch and void the warranty.

Connect the red wire to the positive terminal and the black wire to the negative terminal of the battery. (See Fig. 1).

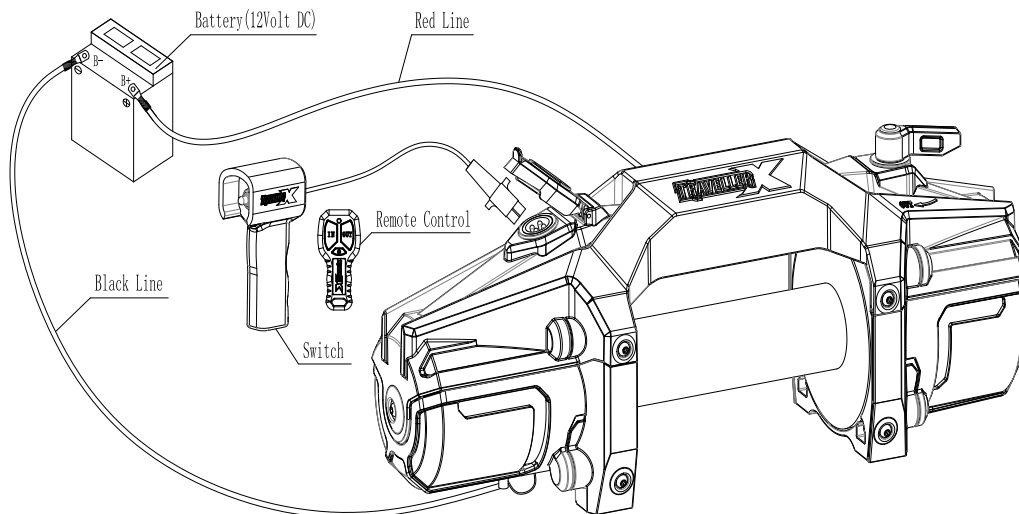


Fig. 1

- Check the rotation direction of the drum. Pull and turn the clutch knob to the “OUT” position (drum should turn freely by hand). Pull out some cable from the drum, and then turn the clutch knob to the “IN” position. Press the “OUT” button on the switch; if the cable is releasing then it is properly connected. Otherwise reverse the wire connections to the motor, and repeat the above-mentioned operation.

OPERATION

- Pull and turn the clutch knob, so the drum can turn freely by hand.
- Use hand saver bar to hitch the hook of the cable assembly and pull cable to the load. Attach the cable hook to the load.

WARNING: Check that there are at least five turns of cable remaining on the drum before operation. Ensure the clutch knob is in the engaged position.

CAUTION: Clutch must be fully engaged before winching.

Never operate the clutch while drum is turning. Do not readjust clutch knob as it has been adjusted and permanently locked in place with a thread-locking compound in the factory.

- Press the “IN” button on the switch to re-spool the cable. Press the “OUT” button to reverse directions. Wait until the motor stops before reversing directions.
- Re-spool the cable after completing the operation.

REPLACING THE CABLE

- Engage the clutch by turning the clutch knob to the “IN” position.
- When inserting the cable into the drum, insert it into the correct end of the hole provided. Tighten the screws.
- Operate the winch and re-spool the cable around the drum tightly.

CAUTION: To keep the stated tension, be sure the cable is wrapped on the drum tightly.

WARNING: Always replace damaged cable with manufacturer’s identical replacement part.

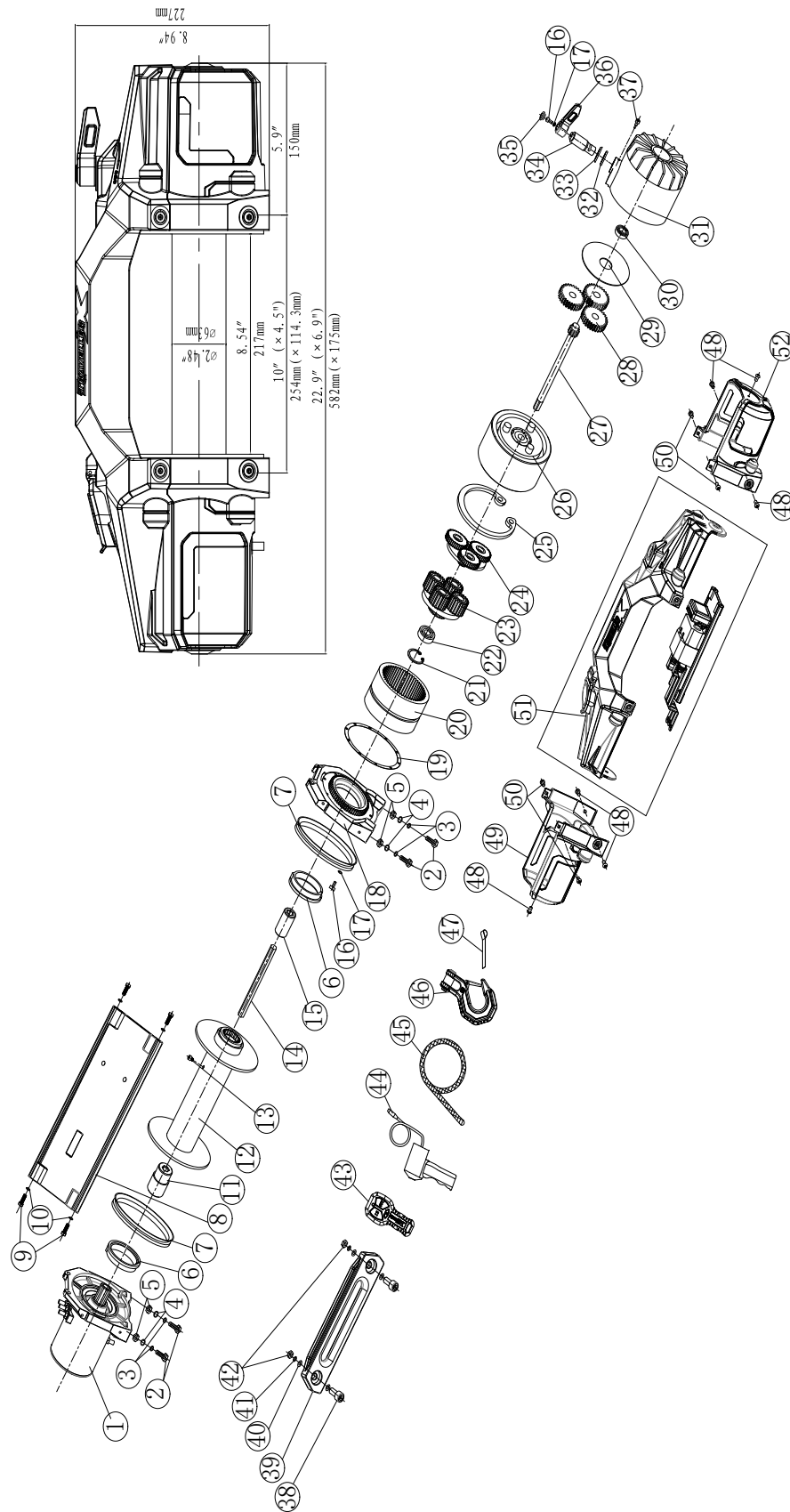
MAINTENANCE

- Periodically check tightness of mounting bolts and electrical connections. Remove all the dirt or corrosion and always keep clean.
- Do not attempt to disassemble the gearbox. Repairs should be done by the manufacturer or authorized repair center.
- The gearbox has been lubricated using high temperature lithium grease in the factory. No internal lubrication is required except when being repaired.
- When the transmitter is replaced, the same type of transmitter is required for pairing. The pairing method is as follows:
Press the power button → Press IN and OUT button at the same time (the red light was flashing) → Turn on receiver for 1-2s (the relay makes a sound of absorption)

TROUBLE SHOOTING

SYMPTOM	POSSIBLE CAUSE	SUGGESTED ACTION
Motor does not turn on	-Switch Assembly not connected properly	-Insert switch assembly all the way into the connector.
	-Loose battery cable connections	-Tighten nuts on all cable connections.
	-Defective switch assembly	-Replace switch assembly.
	-Defective motor	-Check voltage at armature port while switch pressed. If voltage is normal, replace motor.
	-Water has entered motor	-Allow to drain and dry. Run in short bursts without load until completely dry.
Motor runs but cable drum does not turn	-Clutch not engaged	-Turn clutch to the "In" position. If problem remains, a qualified technician needs to check and repair.
Motor runs slowly or without normal power	-Insufficient current or voltage	-Run winch with vehicle motor running. -Recharge battery -Clean, tighten, or replace battery cable connections
Motor overheating	-Winch running time too long	-Allow winch to cool down periodically.
Motor runs only in one direction	-Loose or corroded battery cable or motor cable connections. -Defective relay/switch/remote controller assembly	-Clean, tighten, or replace battery cable connections. -Repair or Replace relay/switch/remote controller assembly.
Winch braking malfunction.	-Cable works in wrong direction.	-Adjust the cable working direction. -Clockwise direction looking from motor end.
	-Brake slice worn or breakdown.	-Replace with new brake.

WINCH ASSEMBLY



WINCH PART LIST

No.	Part #	Qty	Description
1	VT1000100	1	Motor Assembly
2	VT1000001	4	Cap Screw M10 x 35
3	VT1000002	4	Lock Washer Φ10
4	VT1000003	4	Thin Flat Washer Φ10
5	VT1000004	4	Hex Nut M10
6	VT1000005	2	Bushing—Drum
7	VT1000006	2	Ring Seals
8	VT1000007	1	Tie Bar
9	VT1000008	4	Cap Screw M8 x 30
10	VT1000009	4	Lock Washer Φ8
11	VT1000011	1	Coupling
12	VT1000200	1	Drum Assembly
13	VT1000011	1	Screw M8 x 10
14	VT1000012	1	Six Angle Bar
15	VT1000013	1	Coupling
16	VT1000014	9	Screw M5 x 18
17	VT1000015	9	Lock Washer Φ5
18	VT1000016	1	End Bearing
19	VT1000017	1	Gasket
20	VT1000018	1	Gear—Ring
21	VT1000019	1	Circlip For Hole
22	VT1000020	1	Bearing
23	VT1000300	1	Gear Carrier Assembly (Output)
24	VT1000400	1	Gear Carrier Assembly (Intermediate)
25	VT1000021	1	Circlip For Hole
26	VT1000500	1	Brake/ Shaft Assembly
27	VT1000022	1	Gear—Input Sun
28	VT1000023	3	Planetary Gear
29	VT1000024	1	Trust Washer
30	VT1000025	1	Bearing
31	VT1000026	1	Gear—Housing
32	VT1000027	1	Ring Seals
33	VT1000028	1	Clutch Cover
34	VT1000029	1	Clutch Shaft
35	VT1000030	1	Screw Cover
36	VT1000031	1	Clutch Handle
37	VT1000032	1	Clutch Screw
38	VT1000033	2	Cap Screw M10 x 30
39	VT1000034	1	Aluminium Fairlead
40	VT1000035	4	Thin Flat Washer Φ10
41	VT1000036	2	Lock Washer Φ10
42	VT1000037	2	Hex Nut M10
43	VT1000600	1	Remote Control
44	VT1000700	1	Switch (RC8III)
45	VT1000800	1	Cable Assembly
46	VT1000900	1	Hook
47	VT1000038	1	Strap
48	VT1000039	6	Cap Screw M6 x 10
49	VT1000040	1	Motor Housing
50	VT1000041	4	Cap Screw M6 x 14
51	VT1001000	1	Control Assembly
52	VT1000042	1	Reducer Housing

SAFETY PRECAUTIONS

- Never lift people or hoist loads over people. Do not lift items vertically, this winch is designed for horizontal use only.
- Never overload. Be sure all equipment used meets the winch's maximum line pull rating. When double-lining, pulley blocks should be rated for a minimum of two times the winch's line pull rating.
- Do not attempt prolonged pulls with heavy loads. The electric winch is designed for intermittent use only, and should not be used in a constant duty application. Never pull for more than one minute or exceed the rated load. If the winch motor becomes hot to the touch, stop the winch and allow it to cool down for several minutes.
- Never operate winch with less than 5 turns of cable around the winch drum since the cable end may not withstand full load.
- Avoid continuous pulls from extreme angles because this will cause the cable to gather on one end of the drum and damage the cable. Be aware that the winch's line pull capacity is the max line pull of the first layer. Never operate winch pulling a load that exceeds the rated capacity.
- Never hook the cable back to itself because it could damage the cable.
- Be sure the winch is mounted securely on the vehicle or bracket before operation.
- Before moving a load, inspect the cable. Prevent kinks and uneven cable layer before they occur. Apply proper tension to loads under 100lbs.
- Do not move your vehicle to assist the winch in pulling the load. It will be easy to overload, and cause cable damage. Be aware of the danger zone. Keep away from the danger zone during the operation. The danger zone is the area of the winch drum, the fairlead (if fitted), the cable, the pulley block (if used), the hook, and the motor.
- Never approach or span the cable when the winch is under load.
- When using the winch to move a load, place the vehicle transmission in neutral, set vehicle brake, and chock all wheels. The vehicle engine should be running during winch operation so that battery has fully electricity. Never use the winch when there is a lack of voltage.
- Never disconnect free spool clutch when there is a load on the winch.
- Always stand clear of the cable, hook and winch. You should disconnect the clutch first, then use the hand saver bar to hitch the hook to pull the cable.
- Inspect winch, cable, hooks and other accessories frequently. A frayed cable with broken strands should be replaced immediately. Use heavy leather gloves when handling the cable. Do not let the cable slide through your hands. Inspect the cable before use. Mashed, pinched, frayed or kinked areas severely reduce the load-carrying capability. Replacement cables must be re-spooled under 100lbs.
- To keep stated tensile, re-spool the cable around the drum tightly after operation.
- Do not operate winch when under the influence of drugs, alcohol or medication. Always stay alert during operation.
- Wear eye protection and personal protective equipment while operating winch.
- For loads over 50% of rated line pull, the use of the pulley block/snatch block to double the cable is recommended.
- Do not operate around potentially flammable liquids, gases, or debris. Sparks may occur, resulting in the ignition of fire.

Line speed and Motor current(First layer)

Line Pull	Line Speed ft./min (m/min)	Motor Current Amps
lbs.(kgs)	12V DC	12V DC
0(0)	29.5(9.0)	60
4000(1814)	12.1(3.7)	180
7000(3175)	9.2(2.8)	270
10000(4536)	5.25(1.6)	350

Line Pull And Cable Capacity

Layer	Rated line pull lbs (kgs)	Total rope on the drum ft (m)
1	10000(4536)	17.4(5.3)
2	7848(3560)	39.4(12.0)
3	6459(2930)	65.0(19.8)
4	5487(2489)	82.0(25.0)

Distributed By:

TRACTOR SUPPLY COMPANY

5401 VIRGINIA WAY,

BRENTWOOD, TN37027

For customer support, call:1-888-376-9601

www.TractorSupply.com

MADE IN CHINA

Tractor Supply Company ®

www.tractorsupply.com For customer support call 1-888-376-9601