



DKA POWER



2022/2023

NEW PRODUCT CATALOG





THE FUTURE OF OPE IS HERE.

PURE POWER
SERIES



POWERED BY
ENERGIN



3-INCH 57.6V LI-ION POWERED DISK CHIPPER SHREDDER

ITEM NUMBER

OPC503EV

UPC

827518009154

FEATURES

- Powered by an ENERGIN® 57.6V MAX, 1,024Wh, 20Ah, LiFePO4 lithium-ion battery **1**
- Equipped with a 48V 3,500RPM cordless brushless electric motor
- Chipper shredder with double edge chip and quad hammer shredders
- Chips through trees up to Ø3" (Ø7.6cm) through the side feed chute and brush up to Ø3/8" (Ø0.95cm) through the top-loading hopper
- Extra large feed chutes **2**
- Drop stand and handy removable tow bar **3**
- 145/70-6 Ø13.75" (Ø34.9cm) OD x 5.25" (13.3cm) tires on ATV-locking wheels with a 28" (71.1cm) wheelbase **4**
- Includes 1-year limited DK2 warranty
- **OFF-ROAD ONLY AND MAX SPEED 15MPH (24KM/H)**

4



DESCRIPTION

The ATV-towable OPC503EV 3-Inch Disk Chipper Shredder is powered by an ENERGIN® 57.6V MAX, 1,024Wh, 20Ah, LiFePO4 lithium-ion battery, offering superior performance with less environmental impact from manufacturing to utilization (compared to lithium or lead acid). This machine is driven by an ENERGIN® 48V 1,000Wh 3,500RPM cordless brushless electric motor with a patented heat-dissipating technology to prevent overheating, IP67 rated waterproofing, and provides reliability, consistency and stability all while reducing your carbon footprint. This unit is equipped with double edge cuttings blades made with high-strength steel so they stay sharp longer and deteriorates trees, branches, leaves and garden composting with ease.

SPECIFICATION

MOTOR	ENERGIN® 48V 1,000Wh 3,500RPM cordless brushless electric motor
BATTERY	ENERGIN® 57.6V MAX, 1,024Wh, 20Ah LiFePO4
TORQUE	4.1ft/lb (5.5Nm) rated 18.4ft/lb (25Nm) peak
CHARGER	120V AC/DC 200W
WHEELS & TIRES	ATV-locking 145/70-6 Ø13.75" (Ø34.9cm) OD x 5.25" (13.3cm)
WHEELBASE	28" (71.1cm)
CHIPPING CAPACITY	Ø3" (Ø7.6cm) (side feed chute) Ø3/8" (Ø0.95cm) (top-loading hopper)
CUTTERS	Double edge chipper blades and quad hammer shredders
CHIPPER SHREDDER	Leaves, brush, garden compost
EXPULSION CHUTE	Adjustable
DIMENSIONS	71" (L) x 36.5" (W) x 48" (H) 180.3cm (L) x 92.7cm (W) x 121.9cm (H)
WEIGHT	218.5lb (99.1kg)
SHIPPING DIMENSIONS	43.3" (L) x 23.6" (W) x 24.4" (H) 110cm (L) x 60cm (W) x 62cm (H)
SHIPPING WEIGHT	238.5lb (108.2kg)
WARRANTY	1-year limited



LiFePO4 LI-ION TECHNOLOGY THAT'S CLEAN TO BUILD, AND CLEAN TO USE.





PURE POWER SERIES

FEATURES

20-TON 57.6V LI-ION POWERED HORIZONTAL HYDRAULIC LOG SPLITTER



ITEM NUMBER

OPS220EV

5

UPC

827518009178

DESCRIPTION

The OPS220EV is a 20-Ton Horizontal Hydraulic Log Splitter powered by an ENERGIN® 57.6V MAX, 1,024Wh, 20Ah, LiFePO4 lithium-ion battery, offering superior performance with less environmental impact from manufacturing to utilization (compared to lithium or lead acid). This machine is driven by an ENERGIN® 48V 1,000Wh 3,500RPM cordless brushless electric motor with a patented heat-dissipating technology to prevent overheating, IP67 rated waterproofing, and provides reliability, consistency and stability all while reducing your carbon footprint.

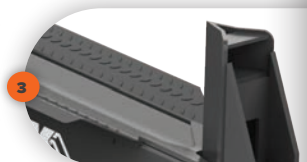
This machine is capable of splitting logs up to 16 inches in diameter and 20.5 inches in length with its solid heat-treated steel wedge and auto-retracting hydraulic plunger.

FEATURES

- Powered by an ENERGIN® 57.6V MAX, 1,024Wh, 20Ah, LiFePO4 lithium-ion battery **1**
- Equipped with a 48V 3,500RPM cordless brushless electric motor
- Comes with 120V AC/DC 200W charger
- 10" (25.4cm) pneumatic tires **2**
- Solid heat-treated steel wedge **3**
- Steel plunger beam with auto-retracting valve capable of splitting logs at Ø16" (Ø40.6cm) in diameter and 20.5" (52.1cm) in length **4**
- Includes 1-year limited DK2 warranty
- **OFF-ROAD ONLY AND MAX SPEED 15MPH (24KM/H)**

SPECIFICATION

MOTOR	ENERGIN® 48V 1,000Wh 3,500RPM cordless brushless electric motor
BATTERY	ENERGIN® 57.6V MAX, 1,024Wh, 20Ah LiFePO4
TORQUE	4.1ft/lb (5.5Nm) rated 18.4ft/lb (25Nm) peak
CHARGER	120V AC/DC 200W
WHEELS & TIRES	10" (25.4cm) pneumatic
SPLITTING CAPACITY	Ø16" (Ø40.6cm) x 20.5" (52.1cm)
WEDGE	Solid heat-treated steel
TYPE OF HYDRAULIC OIL	AW32/AW46
VALVE	Auto-retract with adjustable detent
SHIPPING DIMENSIONS	35.8" (L) x 23.2" (W) x 17.1" (H) 91cm (L) x 59cm (W) x 43.5cm (H)
SHIPPING WEIGHT	165.3lb (75kg)
WARRANTY	1-year limited



LiFePO4
LI-ION TECHNOLOGY
THAT'S CLEAN TO BUILD,
AND CLEAN TO USE.



DETAILK2.COM



215FPS 57.6V LI-ION POWERED WALK-BEHIND LEAF BLOWER

ITEM NUMBER

OPB480EV

UPC

827518009161

FEATURES

- Powered by an ENERGIN® 57.6V MAX, 1,024Wh, 20Ah, LiFePO4 lithium-ion battery **1**
- Equipped with a 48V 3,500RPM cordless brushless electric motor **2**
- Comes with 120V AC/DC 200W charger
- Scrolled housing for efficient air flow production at 215ft/sec (65.5m/sec) that blows up to 1,271ft³/min (36m³/min) **3**
- Adjustable outlet air deflector for added directional control while blowing leaves, brush, or yard debris at 150mph (241.1km/h) **4**
- Front trolley wheel for easy mobility direction **5**
- Ergonomic handle for optimal walk-behind control **6**
- Includes 1-year limited DK2 warranty

6



DESCRIPTION

Introducing the OPB480EV 215FPS Walk-Behind Leaf Blower, powered by an ENERGIN® 57.6V MAX, 1,024Wh, 20Ah, LiFePO4 lithium-ion battery, offering superior performance with less environmental impact from manufacturing to utilization (compared to lithium or lead acid). This machine is driven by an ENERGIN® 48V 1,000Wh 3,500RPM cordless brushless electric motor with a patented heat-dissipating technology to prevent overheating, IP67 rated waterproofing, and provides reliability, consistency and stability all while reducing your carbon footprint.

This unit is equipped with scrolled housing and an adjustable outlet air deflector for added directional control while blowing leaves, brush, or yard debris at a peak air flow of 150mph, and comfortably move the OPB480EV with its ergonomic handle, and front trolley wheel.



SPECIFICATION

MOTOR	ENERGIN® 48V 1,000Wh 3,500RPM cordless brushless electric motor
BATTERY	ENERGIN® 57.6V MAX, 1,024Wh, 20Ah LiFePO4
TORQUE	4.1ft/lb (5.5Nm) rated 18.4ft/lb (25Nm) peak
CHARGER	120V AC/DC 200W
MAX AIR FLOW	150mph (241.4km/h)
SPEED	215ft/sec (65.5m/sec)
AIR VOLUME	1,271ft³/min (36m³/min)
SHIPPING DIMENSIONS	25.6" (L) x 22" (W) x 23.2" (H) 65cm (L) x 56cm (W) x 59cm (H)
SHIPPING WEIGHT	145.5lb (66kg)
WARRANTY	1-year limited



LiFePO4
LI-ION TECHNOLOGY
THAT'S CLEAN TO BUILD,
AND CLEAN TO USE.





2,200PSI 57.6V LI-ION POWERED PRESSURE WASHER



ITEM NUMBER

OPW480EV

7

UPC

827518009147

DESCRIPTION

The OPW480EV is a 2,200PSI Pressure Washer powered by an ENERGIN® 57.6V MAX, 1,024Wh, 20Ah, LiFePO4 lithium-ion battery, offering superior performance with less environmental impact from manufacturing to utilization (compared to lithium or lead acid). This machine is driven by an ENERGIN® 48V 1,000Wh 3,500RPM cordless brushless electric motor with a patented heat-dissipating technology to prevent overheating, IP67 rated waterproofing, and provides reliability, consistency and stability all while reducing your carbon footprint.

The OPW480EV features a 3-piston axial cam aluminum pump to produce high-pressure water to flow through its 25-foot pressure hose, and metal lance and gun with the option of three different spray nozzles for various application requirements at a flow rate of 2.4GPM. This unit also comes equipped with never flat tires, front rubber feet to keep in place during operation, a comfortable padded mobility handle, a pressure hose rack and spray nozzle storage slots all in one convenient spot.

SPECIFICATION

MOTOR	ENERGIN® 48V 1,000Wh 3,500RPM cordless brushless electric motor
BATTERY	ENERGIN® 57.6V MAX, 1,024Wh, 20Ah LiFePO4
TORQUE	4.1ft/lb (5.5Nm) rated 18.4ft/lb (25Nm) peak
CHARGER	120V AC/DC 200W
PUMP	3-piston axial cam
MAX PRESSURE	2,200PSI (150Bar)
FLOW RATE	2.4GPM (9LPM)
SHIPPING DIMENSIONS	21.7" (L) x 18.5" (W) x 22" (H) 55cm (L) x 47cm (W) x 56cm (H)
SHIPPING WEIGHT	90.4lb (41kg)
WARRANTY	1-year limited



FEATURES

- Powered by an ENERGIN® 57.6V MAX, 1,024Wh, 20Ah, LiFePO4 lithium-ion battery **1**
- Equipped with a 48V 3,500RPM cordless brushless electric motor
- Comes with 120V AC/DC 200W charger
- 3-piston axial cam pump creates max pressure of 2,200PSI (150Bar) and a flow rate of 2.4GPM (9LPM)
- 25-foot pressure hose
- Metal lance and gun
- 3 different spray nozzles for various applications
- Never flat tires **2**
- Comfortable padded handle for easy mobility **3**
- Pressure hose rack and spray nozzle storage slots all in one convenient location below the mobility handle **4**
- Includes 1-year limited DK2 warranty



LiFePO4
LI-ION TECHNOLOGY
THAT'S CLEAN TO BUILD,
AND CLEAN TO USE.





DKA POWER

DIA POWER

UNRELENTING PERFORMANCE

**HEAVY CHORE OUTDOOR POWER
EQUIPMENT, POWERED BY KOHLER®**



3-INCH DISK CHIPPER SHREDDER

10



ITEM NUMBER

OPC513

UPC

827518009123

DESCRIPTION

The ATV-towable 3-inch direct drive OPC513 chipper shredder is powered by a KOHLER® 2000 Series RH265 6.5HP 196cc engine, and comes equipped with double edge cutting blades made with high strength steel so they stay sharp longer.

Featuring direct shaft drive centrifugal force that deteriorates trees, branches, leaves, and garden composting with ease and has a 4-stage cyclonic air filter system in the KOHLER® engine, auto-blade feeding, and 4.10/3.50-4 tires for off-road towing.

FEATURES

- Powered by a KOHLER® 2000 Series RH265 6.5HP 196cc engine **1**
- Direct drive combo chipper shredder with double edge chip and hammer shredders
- Perfect for trees up to 3" (7.6cm) in diameter, and twigs, leaves and garden composting up to 3/8" (0.95cm) in diameter
- Extra large feed chutes **2**
- Drop stand and handy removable tow bar **3**
- 4.10/3.50-4 Ø10.2" (Ø26cm) OD x 3.9" (10cm) never-flat tires **4**
- Includes 2-year KOHLER® engine and 1-year DK2 chassis warranty
- **OFF-ROAD ONLY AND MAX SPEED 15MPH (24KM/H)**

SPECIFICATION

ENGINE	KOHLER® 2000 Series RH265 6.5HP 196cc
GEARBOX	Direct drive 10.7ft/lb (14.5Nm) gross torque
WHEELS & TIRES	4.10/3.50-4 Ø10.2" (Ø26cm) OD x 3.9" (10cm) never-flat
WHEELBASE	21.7" (55cm)
CHIPPING CAPACITY	Ø3" (Ø7.6cm) (side feed chute) Ø3/8" (Ø0.95cm) (top-loading hopper)
CUTTERS	Double edge chipper blades and hammer shredders
CHIPPER SHREDDER	Leaves, brush, garden compost
EXPULSION CHUTE	Adjustable
COUPLER	2" (5.08cm)
DIMENSIONS	41.7" (L) x 34.3" (W) x 37.4" (H) 106cm (L) x 87cm (W) x 95cm (H)
WEIGHT	136.7lb (62kg)
SHIPPING DIMENSIONS	29.5" (L) x 22" (W) x 20.9" (H) 75cm (L) x 56cm (W) x 53cm (H)
SHIPPING WEIGHT	158.7lb (72kg)
WARRANTY	2-year KOHLER® engine 1-year DK2 chassis



4-INCH KINETIC DRUM CHIPPER

ITEM NUMBER

OPC524

11

UPC

827518007259

DESCRIPTION

The OPC524 4-inch kinetic chipper is powered by a KOHLER® Command PRO® CH270 7HP 208cc engine and features dual swing chutes, double edge reversible high-speed cutting blades, bearing-mounted ATV tires and rims and built in toolbox with an extended load chute with safety e-stop.

The engine delivers 10.5ft/lb torque for superior cutting performance, and the dual V-belt direct drive and kinetic cyclonic drum pulverize up to 4-inch diameter trees. The tool-free dual swing chutes quickly open for easy drum access. The feed chute features dual integrated handles for easy equipment moving, and finally this machine comes equipped with a quick-drop stand, and a 1-7/8 inch ball removable tow bar to move around job sites with ease.

SPECIFICATION

ENGINE	KOHLER® Command PRO® CH270 7HP 208cc
GEARBOX	Direct drive 10.7ft/lb (14.5Nm) gross torque
WHEELS & TIRES	175/70-6 Ø13.5" (Ø34.3cm) OD x 5" (12.7cm) tires on Ø6" (15.2cm) x 4.5" (11.4cm) bearing-mounted ATV rims
CHIPPING CAPACITY	Ø4" (Ø10.16cm)
CUTTERS	Double edge reversible chipper blades
CHIPPER	Auto-adjusting up to Ø4" (Ø10.16cm) trees and brush
EXPULSION CHUTE	Tool-free swing open and 180° adjustable
COUPLER	1-7/8" (4.76cm)
DIMENSIONS	91" (L) x 30" (W) x 46" (H) 231.1cm (L) x 76.2cm (W) x 116.8cm (H)
WEIGHT	300lb (136.1kg)
SHIPPING DIMENSIONS	34" (L) x 22" (W) x 35" (H) 86.4cm (L) x 55.9cm (W) x 88.9cm (H)
SHIPPING WEIGHT	330lb (149.7kg)
WARRANTY	3-year KOHLER® engine 1-year DK2 chassis



FEATURES

- Powered by a KOHLER® Command PRO® CH270 7HP 208cc engine **1**
- Chips through trees and branches up to 4" (10.2cm) in diameter
- Dual-belt drive drum transmission with double edge reversible cutting blades for trees and brush up to 4" (10.2cm) in diameter **2**
- 175/70-6 Ø13.5" (Ø34.3cm) OD x 5" (12.7cm) tires on Ø6" (Ø15.2cm) x 4.5" (11.4cm) bearing-mounted ATV rims for off-road performance **3**
- Extra-large extended feed chute with integrated equipment moving handles and E-stop safety shutoff **4**
- Dual tool-free swing open chutes for easy drum access
- 180° tool-free rotational spout on expulsion chute
- Removable tow bar with 1-7/8" (4.76cm) hitch receiver
- Includes 3-year KOHLER® engine and 1-year DK2 chassis warranty
- **OFF-ROAD ONLY AND MAX SPEED 15MPH (24KM/H)**



5-INCH KINETIC DRUM CHIPPER

ITEM NUMBER

OPC525

UPC

827518008560

DESCRIPTION

The OPC525 5-inch kinetic chipper is powered by a KOHLER® Command PRO® CH395 9.5HP 277cc engine and features dual swing chutes, double edge reversible high-speed cutting blades, bearing-mounted ATV tires and rims and built in toolbox with an extended load chute with safety e-stop.

The engine delivers 13.9ft/lb torque for superior cutting performance, and the dual V-belt direct drive and kinetic cyclonic drum pulverize up to 5-inch diameter trees. The tool-free dual swing chutes quickly open for easy drum access. The feed chute features dual integrated handles for easy equipment moving, and finally this machine comes equipped with a quick-drop stand, and a 1-7/8 inch ball removable tow bar to move around job sites with ease.

SPECIFICATION

ENGINE KOHLER® Command PRO® CH395 9.5HP 277cc

GEARBOX Direct drive 13.9ft/lb (18.8Nm) gross torque

WHEELS & TIRES 175/70-6 Ø13.5" (Ø34.3cm) OD x 5" (12.7cm) tires on Ø6" (15.2cm) x 4.5" (11.4cm) bearing-mounted ATV rims

CHIPPING CAPACITY Ø5" (Ø12.7cm)

CUTTERS Double edge reversible chipper blades

CHIPPER Auto-adjusting up to Ø5" (Ø12.7cm) trees and brush

EXPULSION CHUTE Tool-free swing open and 180° adjustable

COUPLER 1-7/8" (4.76cm)

DIMENSIONS 91" (L) x 30" (W) x 46" (H)
231.1cm (L) x 76.2cm (W) x 116.8cm (H)

WEIGHT 308.6lb (140kg)

SHIPPING DIMENSIONS 35.8" (L) x 22" (W) x 37.8" (H)
91cm (L) x 56cm (W) x 96cm (H)

SHIPPING WEIGHT 352.7lb (160kg)

WARRANTY 3-year KOHLER® engine
1-year DK2 chassis



FEATURES

- Powered by a KOHLER® Command PRO® CH395 9.5HP 277cc engine **1**
- Chips through trees and branches up to 5" (12.7cm) in diameter
- Dual-belt drive drum transmission with double edge reversible cutting blades for trees and brush up to 5" (12.7cm) in diameter **2**
- 175/70-6 Ø13.5" (Ø34.3cm) OD x 5" (12.7cm) tires on Ø6" (Ø15.2cm) x 4.5" (11.4cm) bearing-mounted ATV rims for off-road performance **3**
- Extra-large extended feed chute with integrated equipment moving handles and E-stop safety shutoff **4**
- Dual tool-free swing open chutes for easy drum access
- 180° tool-free rotational spout on expulsion chute
- Removable tow bar with 1-7/8" (4.76cm) hitch receiver
- Includes 3-year KOHLER® engine and 1-year DK2 chassis warranty
- **OFF-ROAD ONLY AND MAX SPEED 15MPH (24KM/H)**



27-TON HORIZONTAL & VERTICAL HYDRAULIC LOG SPLITTER



ITEM NUMBER

OPS227

13

UPC

827518008577

DESCRIPTION

Introducing the 27-ton horizontal and vertical hydraulic log splitter. The DK2 POWER OPS227 is driven by a powerful KOHLER® SH265 6.5HP 196cc engine. This machine is capable of splitting up to 25.5 inches in length and 19.6 inches in diameter with uncompromising force at a cycle speed of 13 seconds, all while using the full potential of its 8-inch heat-treated steel wedge. The OPS227 sits on a 37-inch wheelbase equipped with 16-inch O.D. 4.8-8 tires and includes a tow bar for easy job site moving.

SPECIFICATION

ENGINE	KOHLER® SH265 6.5HP 196cc
SPLITTING CAPACITY	25.5" (L) x Ø19.6" 64.7cm (L) x Ø54.8cm
CYCLE TIME	13 seconds
HYDRAULIC CYLINDER	Ø4" (Ø10.2cm) x 24" (60.9cm) stroke
HYDRAULIC FLOW RATE	15GPM (56.8LPM), two-stage
HYDRAULIC OIL CAPACITY	6.5gal (24.6L)
TYPE OF HYDRAULIC OIL	AW32/AW46
HYDRAULIC OIL FILTER	10 micron (1250 mesh) paper with NBR (Buna-N) seals
WEDGE	8" (20.3cm) high, heat-treated steel
BEAM	8" (20.3cm) foot plate
VALVE	Auto-retract with adjustable detent
WHEELS & TIRES	D.O.T. approved 4.80-8 Ø16" (Ø40.6cm) OD
WHEELBASE	37" (94cm)
COUPLER	2" (5.08cm) ball with safety chains
ASSEMBLED DIMENSIONS & WEIGHT	87.4" (L) x 49.2" (W) x 35.8" (H) @ 507lb 222cm (L) x 125cm (W) x 91cm (H) @ 230kg
SHIPPING DIMENSIONS & WEIGHT	70.9" (L) x 31.5" (W) x 19.7" (H) @ 551.2lb 180cm (L) x 80cm (W) x 50cm (H) @ 250kg
WARRANTY	2-year KOHLER® parts and labor 1-year DK2 chassis



FEATURES

- Powered by a KOHLER® SH265 6.5HP 196cc engine **1**
- 25.5" x Ø19.6" (64.8cm x Ø49.8cm) log capacity
- 8" (20.3cm) heat-treated steel wedge **2**
- 13-second cycling time
- D.O.T. approved Ø16" (Ø40.6cm) OD road tires sitting on a 37" (94cm) wheelbase **3**
- Folds 90° for both horizontal and vertical log splitting capability **4**
- Two-stage 15GPM (56.8LPM) pump
- 6.5 gallon (24.6 litres) hydraulic fluid capacity
- Auto-retracting adjustable detent valve
- 2" (5.08cm) ball coupler with safety chains **5**
- Includes 2-year KOHLER® engine parts and labor and 1-year DK2 chassis warranty
- **NOT HIGHWAY TOWABLE AND MAX SPEED 25MPH (40KM/H)**



32-TON HORIZONTAL & VERTICAL HYDRAULIC LOG SPLITTER

14



DESCRIPTION

Introducing the 32-ton horizontal and vertical hydraulic log splitter. The DK2 POWER OPS232 is driven by a powerful KOHLER® SH265 6.5HP 196cc engine. This machine is capable of splitting up to 25.5 inches in length and 21.6 inches in diameter with uncompromising force at a cycle speed of 13 seconds, all while using the full potential of its 8.5-inch heat-treated steel wedge. The OPS232 sits on a 37-inch wheelbase equipped with 16-inch O.D. 4.8-8 tires and includes a tow bar for easy job site moving.

SPECIFICATION

ENGINE	KOHLER® SH265 6.5HP 196cc
SPLITTING CAPACITY	25.5" (L) x Ø21.6" 64.7cm (L) x Ø54.8cm
CYCLE TIME	13 seconds
HYDRAULIC CYLINDER	Ø4.5" (Ø11.4cm) x 24" (60.9cm) stroke
HYDRAULIC FLOW RATE	15GPM (56.8LPM), two-stage
HYDRAULIC OIL CAPACITY	8.5gal (32L)
TYPE OF HYDRAULIC OIL	AW32/AW46
HYDRAULIC OIL FILTER	10 micron (1250 mesh) paper with NBR (Buna-N) seals
WEDGE	8.5" (21.6cm) high, heat-treated steel
BEAM	8.5" (21.6cm) foot plate
VALVE	Auto-retract with adjustable detent
WHEELS & TIRES	D.O.T. approved 4.80-8 Ø16" (Ø40.6cm) OD
WHEELBASE	37" (94cm)
COUPLER	2" (5.08cm) ball with safety chains
ASSEMBLED DIMENSIONS & WEIGHT	89.4" (L) x 51.2" (W) x 37.4" (H) @ 529.1lb 227cm (L) x 130cm (W) x 95cm (H) @ 240kg
SHIPPING DIMENSIONS & WEIGHT	70.9" (L) x 31.5" (W) x 19.7" (H) @ 573lb 180cm (L) x 80cm (W) x 50cm (H) @ 260kg
WARRANTY	2-year KOHLER® parts and labor 1-year DK2 chassis



ITEM NUMBER

OPS232

UPC

827518008584

FEATURES

- Powered by a KOHLER® SH265 6.5HP 196cc engine **1**
- 25.5" x Ø21.6" (64.8cm x Ø54.8cm) log capacity
- 8.5" (21.6cm) heat-treated steel wedge **2**
- 13-second cycling time
- D.O.T. approved Ø16" (Ø40.6cm) OD road tires sitting on a 37" (94cm) wheelbase **3**
- Folds 90° for both horizontal and vertical log splitting capability **4**
- Two-stage 15GPM (56.8LPM) pump
- 8.5 gallon (32 litres) hydraulic fluid capacity
- Auto-retracting adjustable detent valve
- 2" (5.08cm) ball coupler with safety chains **5**
- Includes 2-year KOHLER® engine parts and labor and 1-year DK2 chassis warranty
- **NOT HIGHWAY TOWABLE AND MAX SPEED 25MPH (40KM/H)**



OPS232

32-TON HORIZONTAL & VERTICAL HYDRAULIC LOG SPLITTER



▶ SCAN ME

2

4

1

3



17-INCH x 21-INCH PLATE COMPACTOR

ITEM NUMBER

OPV425

UPC

827518008249

FEATURES

- Powered by a KOHLER® CH270 7HP 208cc Command PRO® Commercial Engine **1**
- 17" (43.2cm) x 21" (53.3cm) solid steel base plate
- Conveniently placed 27.5" (69.9cm) folding handles for easier transportation and stowaway **2**
- Open design to reduce dirt and residue build-up **3**
- Central-mounted, fully enclosed exciter for even compacting force over the entire base plate **4**
- Includes 3-year KOHLER® engine and 1-year DK2 chassis warranty

DESCRIPTION

Featuring a large 17-inch by 21-inch base plate, the OPV425 plate compactor doesn't disappoint when it comes to compacting performance, and the power that drives this machine comes from a KOHLER® Command PRO® CH270 7HP 208cc engine.

With a compacting force of 3,600lb (16kn) at 4,750 vibrations per minute, this unit is the perfect solution for your compacting needs.

Designed with conveniently placed, 27.5-inch folding handles for easy transportation and storage, open design to reduce dirt build-up, and a central-mounted, fully enclosed exciter for even compacting force over the entire base plate.

SPECIFICATION

ENGINE	KOHLER® Command PRO® CH270 7HP 208cc
BASE PLATE	17" (43.2cm) x 21" (53.3cm)
HANDLE LENGTH	27.5" (69.9cm)
VIBRATION FREQUENCY	4,750VPM
CENTRIFUGAL FORCE	3,600lb/ft (16kn)
COMPACTING DEPTH	11.8" (30cm)
SPEED	12.6in/sec (32cm/sec)
DIMENSIONS	17" (L) x 21" (W) x 29" (H) 43.2cm (L) x 53.3cm (W) x 73.7cm (H)
WEIGHT	198.4lb (90kg)
SHIPPING DIMENSIONS	18.9" (L) x 26.4" (W) x 28.3" (H) 48cm (L) x 67.1cm (W) x 72cm (H)
SHIPPING WEIGHT	227lb (103kg)
WARRANTY	3-year KOHLER® engine 1-year DK2 chassis



OPV425

17-INCH x 21-INCH PLATE COMPACTOR



▶ SCAN ME



2

1

3

4



WWW.DK2.COM

DK2 

WWW.DK2.COM

DK2 



DK AIR

WHISPER-QUIET PERFORMANCE
**TWIN CYLINDER,
OIL-FREE, & SILENT
AIR COMPRESSORS**



TWIN CYLINDER 2HP 20-GALLON OIL-FREE SILENT ELECTRIC AIR COMPRESSOR

ITEM NUMBER

AC20G

UPC

827518008782

FEATURES

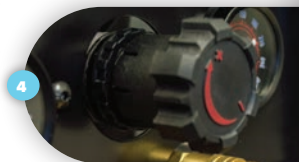
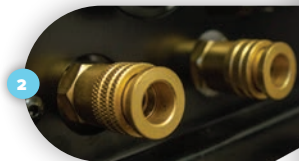
- Powered by a twin cylinder 2HP (1491.4W) 120V AC brushless electric motor **1**
- Holds up to 20gal (75.7L) of compressed air at 150 PSI (10.3 Bar)
- Whisper quiet operation
- Durable, spring-loaded pressure switch for easy on/off control
- 2 quick-connect hose ports **2**
- 2 clear analog pressure gauges **3**
- Regulator dial to control the amount of air pressure released at the hose outlets **4**
- Ergonomic handle **5**
- Ø8" (Ø20.3cm) OD x 1.75" (4.4cm) tires for easy mobility **6**
- Release valve to remove air pressure from the tank
- Drain petcock drains moisture from the tank and reduce risk of corrosion
- Oil-free operation - no lubrication required
- Thermal overload protection system automatically shuts off the electric motor if it becomes overheated
- Includes 1-year limited DK2 warranty

DESCRIPTION

The AC20G is a silent electric oil-free air compressor that can be plugged into any nominal 120V outlet and ready in seconds at 150 PSI with 20 gallons of available compressed air, all at a whisper quiet sound level. Equipped with a brushless electric motor, 2 quick-connect hose ports with a regulator dial so the tools operate at full potential, and when it comes to moving the AC20G around the job site, it couldn't be any easier with its ergonomic lift handle and never flat wheels and tires. When the job is done and it's time to pack up, just turn the pressure switch off, unplug, and pull the release valve to remove any remaining air pressure.

SPECIFICATION

POWER	1491.4W / 2HP
VOLTAGE	120V AC
FREQUENCY	60Hz
SPEED	1,700RPM
DISPLACEMENT	4.5CFM (90 PSI / 6.2 Bar) 5.5CFM (40 PSI / 2.8 Bar)
TANK	Vertical ASME Certified
CAPACITY	20gal (75.7L)
MAX PRESSURE	150 PSI (10.3 Bar)
DIMENSIONS	19.5" (L) x 16" (W) x 44.5" (H) 49.5cm (L) x 40.6cm (W) x 113cm (H)
WEIGHT	106.9lb (48.5kg)
SHIPPING DIMENSIONS	20" (L) x 18.3" (W) x 47.3" (H) 50.8cm (L) x 46.5cm (W) x 120.1cm (H)
SHIPPING WEIGHT	116.8lb (53kg)
WARRANTY	1-year limited





3

2

6

5

1

4

DK2 

WWW.DK2.COM



 SCAN ME

AC20G
**2HP 20-GAL SILENT
AIR COMPRESSOR**

TWIN CYLINDER 2HP 10-GALLON OIL-FREE SILENT ELECTRIC AIR COMPRESSOR

ITEM NUMBER

AC10G

UPC

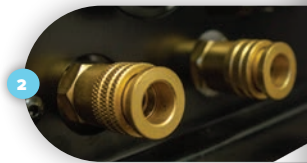
827518008775

DESCRIPTION

The AC10G is a silent electric oil-free air compressor that can be plugged into any nominal 120V outlet and ready in seconds at 150 PSI with 10 gallons of available compressed air, all at a whisper quiet sound level. Equipped with a brushless electric motor, 2 quick-connect hose ports with a regulator dial so the tools operate at full potential, and when it comes to moving the AC10G around the job site, it couldn't be any easier with its ergonomic lift handle and never flat wheels and tires. When the job is done and it's time to pack up, just turn the pressure switch off, unplug, and pull the release valve to remove any remaining air pressure.

SPECIFICATION

POWER	1491.4W / 2HP
VOLTAGE	120V AC
FREQUENCY	60Hz
SPEED	1,700RPM
DISPLACEMENT	4.5CFM (90 PSI / 6.2 Bar) 5.5CFM (40 PSI / 2.8 Bar)
TANK	Vertical
CAPACITY	10gal (37.9L)
MAX PRESSURE	150 PSI (10.3 Bar)
DIMENSIONS	19.5" (L) x 16" (W) x 32.5" (H) 49.5cm (L) x 40.6cm (W) x 82.6cm (H)
WEIGHT	88.2lb (40kg)
SHIPPING DIMENSIONS	20" (L) x 19" (W) x 36.3" (H) 50.8cm (L) x 48.3cm (W) x 92.2cm (H)
SHIPPING WEIGHT	97lb (44kg)
WARRANTY	1-year limited



FEATURES

- Powered by a twin cylinder 2HP (1491.4W) 120V AC brushless electric motor ¹
- Holds up to 10gal (37.9L) of compressed air at 150 PSI (10.3 Bar)
- Whisper quiet operation
- Durable, spring-loaded pressure switch for easy on/off control
- 2 quick-connect hose ports ²
- 2 clear analog pressure gauges ³
- Regulator dial to control the amount of air pressure released at the hose outlets ⁴
- Ergonomic handle ⁵
- Never flat Ø8" (Ø20.3cm) OD x 1.75" (4.4cm) tires for easy mobility ⁶
- Release valve to remove air pressure from the tank
- Drain petcock drains moisture from the tank and reduce risk of corrosion
- Oil-free operation - no lubrication required
- Thermal overload protection system automatically shuts off the electric motor if it becomes overheated
- Includes 1-year limited DK2 warranty

TWIN CYLINDER 1HP 4-GALLON OIL-FREE SILENT ELECTRIC AIR COMPRESSOR

ITEM NUMBER

AC04G

23

UPC

827518008799

DESCRIPTION

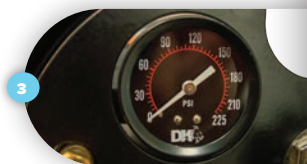
The AC04G is a silent electric oil-free air compressor that can be plugged into any nominal 120V outlet and ready in seconds at 125 PSI with 4 gallons of available compressed air, all at a whisper quiet sound level.

This unit comes equipped with a brushless electric motor, 2 quick-connect hose ports with a regulator dial so the tools are given the air pressure they need to operate at their full potential, and when it comes to moving the AC04G around the job site, it couldn't be any easier with its lightweight, compact design and ergonomic lift handle.

When the job is done and it's time to pack up, just turn the pressure switch off, unplug, and pull the release valve to remove any remaining air pressure.

SPECIFICATION

POWER	550W/0.75HP / 750W/1.0HP
VOLTAGE	110V / 120V
FREQUENCY	60Hz
SPEED	1,700RPM
DISPLACEMENT	3.8CFM / 4.0CFM
CAPACITY	4gal (15.1L)
MAX PRESSURE	125 PSI (8.6 Bar)
DIMENSIONS	17.4" (L) x 15.6" (W) x 20.8" (H) 44.2cm (L) x 39.6cm (W) x 52.8cm (H)
WEIGHT	54lb (24.5kg)
SHIPPING DIMENSIONS	18.7" (L) x 16.5" (W) x 22.4" (H) 47.5cm (L) x 41.9cm (W) x 56.9cm (H)
SHIPPING WEIGHT	57.3lb (26kg)
WARRANTY	1-year limited



FEATURES

- Powered by a twin cylinder 1HP (750W) 120V brushless electric motor **1**
- Holds up to 4gal (15.1L) of compressed air at 125 PSI (8.6 Bar)
- Whisper quiet operation
- Durable, spring-loaded pressure switch for easy on/off control
- 2 quick-connect hose ports **2**
- 2 clear analog pressure gauges **3**
- Regulator dial to control the amount of air pressure released at the hose outlets **4**
- Compact, lightweight design with ergonomic handle for easy mobility **5**
- Release valve to remove air pressure from the tank
- Drain petcock drains moisture from the tank and reduce risk of corrosion
- Oil-free operation - no lubrication required
- Thermal overload protection system automatically shuts off the electric motor if it becomes overheated
- Includes 1-year limited DK2 warranty

TWIN CYLINDER 1HP 2-GALLON OIL-FREE SILENT ELECTRIC AIR COMPRESSOR

ITEM NUMBER

AC02G

UPC

827518008249

FEATURES

- Powered by a twin cylinder 1HP (750W) 120V brushless electric motor **1**
- Holds up to 2gal (7.6L) of compressed air at 125 PSI (8.6 Bar)
- Whisper quiet operation
- Durable, spring-loaded pressure switch for easy on/off control
- 2 quick-connect hose ports **2**
- 2 clear analog pressure gauges **3**
- Regulator dial to control the amount of air pressure released at the hose outlets **4**
- Compact, lightweight design with ergonomic handle for easy mobility **5**
- Release valve to remove air pressure from the tank
- Drain petcock drains moisture from the tank and reduce risk of corrosion
- Oil-free operation - no lubrication required
- Thermal overload protection system automatically shuts off the electric motor if it becomes overheated
- Includes 1-year limited DK2 warranty

24



DESCRIPTION

The AC02G is a silent electric oil-free air compressor that can be plugged into any nominal 120V outlet and ready in seconds at 125 PSI with 2 gallons of available compressed air, all at a whisper quiet sound level.

This unit comes equipped with a brushless electric motor, 2 quick-connect hose ports with a regulator dial so the tools are given the air pressure they need to operate at their full potential, and when it comes to moving the AC02G around the job site, it couldn't be any easier with its lightweight, compact design and ergonomic lift handle.

When the job is done and it's time to pack up, just turn the pressure switch off, unplug, and pull the release valve to remove any remaining air pressure.

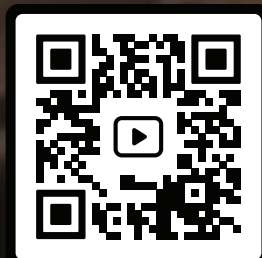


SPECIFICATION

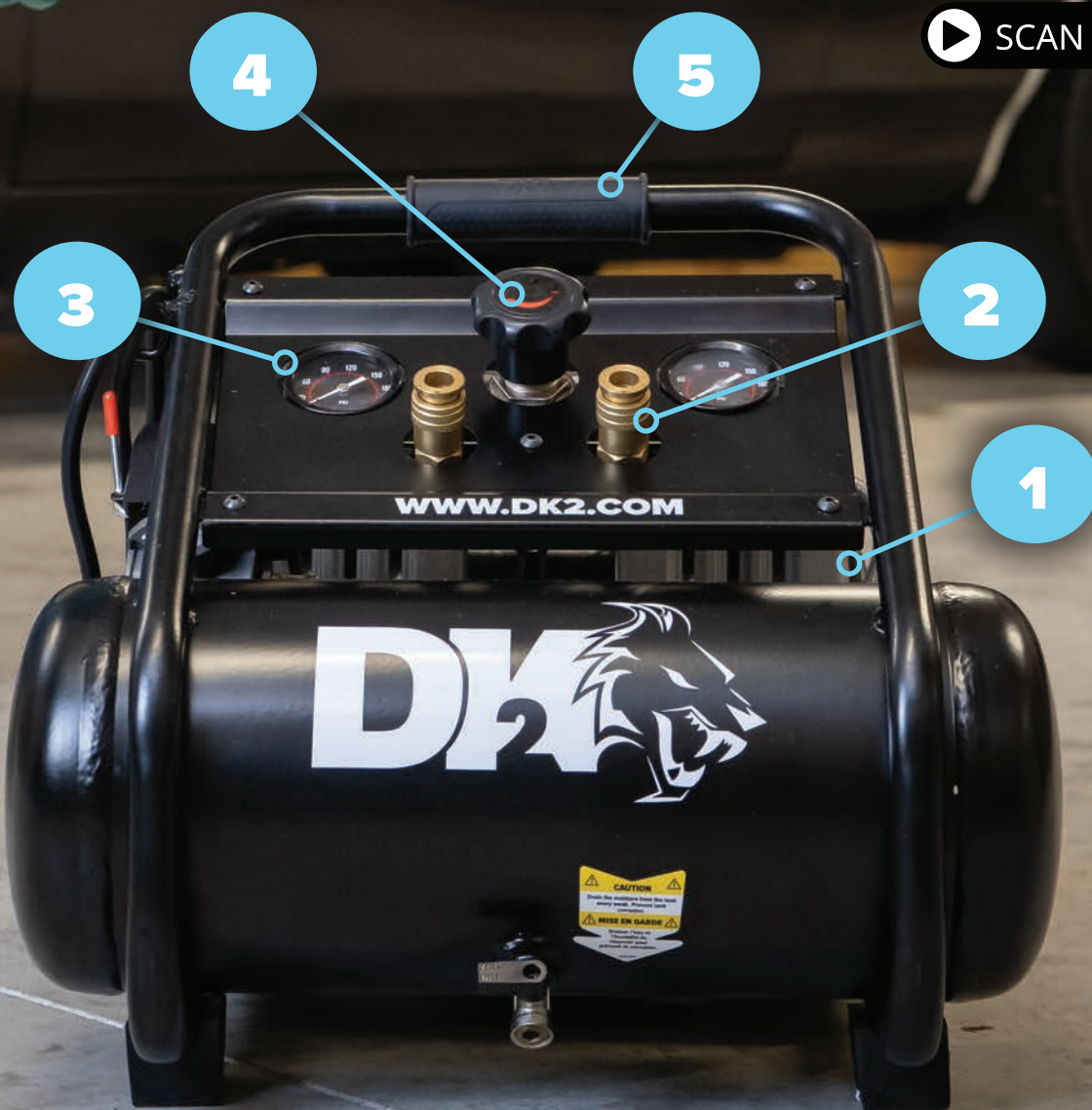
POWER	550W/0.75HP / 750W/1.0HP
VOLTAGE	110V / 120V
FREQUENCY	60Hz
SPEED	1,700RPM
DISPLACEMENT	3.8CFM / 4.0CFM
CAPACITY	2gal (7.6L)
MAX PRESSURE	125 PSI (8.6 Bar)
DIMENSIONS	17.3" (L) x 15.8" (W) x 13.9" (H) 44cm (L) x 40.1cm (W) x 35.3cm (H)
WEIGHT	43lb (19.5kg)
SHIPPING DIMENSIONS	18.9" (L) x 16.9" (W) x 15.6" (H) 48cm (L) x 43cm (W) x 39.5cm (H)
SHIPPING WEIGHT	46.3lb (21kg)
WARRANTY	1-year limited

AC02G

1HP 2-GAL SILENT AIR COMPRESSOR



▶ SCAN ME



4

5

3

2

1

WWW.DK2.COM

DK2

CAUTION
Do not breathe the air from
this compressor. Please use
proper ventilation.
NE PAS RESPIRER L'AIR



The logo for DVA Trailers, featuring the letters 'DVA' in a stylized font with a truck icon integrated into the 'V', followed by the word 'TRAILERS' in a bold, sans-serif font. The logo is set against a white background that appears to be a banner or a stylized sky element.

DVA TRAILERS

FOR THE LONG HAUL
**EXCEPTIONALLY
BALANCED, VERSATILE
TRAILERS**



4FT x 6FT SINGLE AXLE OPEN RAIL GALVANIZED LANDSCAPE TRAILER

28



ITEM NUMBER

MMT4X6OG

UPC

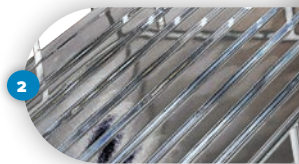
827518008119

DESCRIPTION

The MMT4X6OG is specially designed for handling a variety of hauling tasks; the perfect solution for anyone needing to pull a trailer behind a small vehicle, full size truck, lawn tractor, or ATV and engineered to provide exceptional balance and ease of mobility without giving up one ounce of payload capacity. Made from 100% welded hot-dipped galvanized tubular steel with expanded steel decks and DK2's back gate design is multi-purpose and can sit flat in the bed, up in a vertical position, or lying down as a ramp.

SPECIFICATION

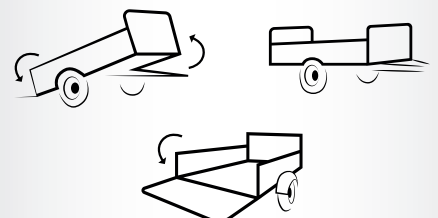
PAYLOAD CAPACITY	1,295lb (587.4kg)
GVWR	1,600lb (725.7kg)
WHEELS & TIRES	D.O.T. 4.80-12 bias tire on 12" (30.5cm) rim with 5 x 4.5" (11.4cm) bolt pattern
MATERIAL	Fully welded heavy-duty hot-dipped galvanized tubular steel
RAILS	Open design, tubular steel
GATE	36" (91.4cm) square tube steel ramp and round tube steel exterior
FLOORING	Corrugated panel
DUMP BED	2-position, axle-mounted with quick-release lock pin
LIGHTING	Pre-wired, quick-connect D.O.T LED
BED DIMENSIONS	72" (L) x 48" (W) 182.9cm (L) x 121.9cm (W)
FLOOR HEIGHT	18" (45.7cm)
HITCH HEIGHT	14" (35.6cm)
DIMENSIONS	152" (L) x 64" (W) x 26" (H) 386.1cm (L) x 162.6cm (W) x 66cm (H)
WEIGHT	302lb (137kg)
SHIPPING DIMENSIONS	78" (L) x 52" (W) x 9" (H) 198.1cm (L) x 132.1cm (W) x 22.9cm (H)
SHIPPING WEIGHT	305lb (138.3kg)
WARRANTY	1-year limited



FEATURES

- Constructed with fully welded heavy-duty hot-dipped galvanized tubular steel
- Tubular steel open rail design ¹
- Corrugated steel floor panel ²
- 36" (91.4cm) square tube steel ramp and round tube steel exterior ³
- Solid square tube cambered axle
- 2-position axle-mounted dump bed with quick release lock pin ⁴
- D.O.T. 4.80-12 bias tires on a 12" (30.5cm) rim with 5 x 4.5" (11.4cm) bolt pattern ⁵
- Heavy-duty tail light protectors
- Quick-connect D.O.T. LED lighting with side markers
- Ships in a single package
- 2" (5.08cm) coupler
- Includes all necessary paperwork for registration

3-IN-1 UTILITY TRAILER



6FT x 10FT SINGLE AXLE OPEN RAIL UTILITY TRAILER

ITEM NUMBER

MMT6X10

29

UPC

826518005593



DESCRIPTION

Introducing the new MMT6X10 single axle open rail utility trailer, the largest in DK2's collection. Constructed with fully welded heavy-duty powder-coated tubular steel with a corrugated steel panel floor, you can count on this trailer to deliver long lasting reliability for all your hauling needs. It has a payload capacity of 1,950 pounds and sits on a solid square tube cambered axle equipped with D.O.T. 14-inch 175/80R14 tires. Load and unload this trailer with ease using the included 48-inch drive-up gate.

SPECIFICATION

PAYLOAD CAPACITY	1,950lb (884.5kg)
GVWR	2,500lb (1,134kg)
WHEELS & TIRES	14" (35.6cm) D.O.T. 175/80R14 bias tires
MATERIAL	Fully welded heavy-duty UV powder coated tubular steel
SIDE PANELS	Open design, tubular steel
GATE	49.3" (125.2cm) tubular and expanded mesh steel ramp
FLOORING	Corrugated reinforced steel panels
DUMP BED	2-position, axle-mounted with quick-release lock pin
LIGHTING	Pre-wired, quick-connect D.O.T LED
BED DIMENSIONS	120" (L) x 72" (W) 304.8cm (L) x 182.9cm (W)
FLOOR HEIGHT	20.2" (51.3cm)
HITCH HEIGHT	18.2" (46.2cm)
DIMENSIONS	166.1" (L) x 83.9" (W) x 71.1" (H) 421.9cm (L) x 213.1cm (W) x 180.6cm (H)
WEIGHT	640lb (290.3kg)
SHIPPING DIMENSIONS	83.1" (L) x 74" (W) x 10.2" (H) 211.1cm (L) x 188cm (W) x 25.9cm (H)
SHIPPING WEIGHT	650.4lb (295kg)
WARRANTY	1-year limited



FEATURES

- Constructed with fully welded heavy-duty UV powder-coated tubular steel
- Corrugated reinforced steel floor panel **1**
- Tubular steel open rail design **2**
- 49.3" (125.2cm) tubular and expanded mesh steel rear ramp gate **3**
- Solid square tube cambered axle
- 2-position axle-mounted dump bed with quick release lock pin **4**
- 14" (35.6cm) D.O.T. 175/80R14 bias tires **5**
- Heavy-duty tail light protectors
- Quick-connect D.O.T. LED lighting with side markers
- Ships in a single package
- 2" (5.08cm) coupler on an A-frame tongue for added stability
- Includes all necessary paperwork for registration

4FT x 8FT SINGLE AXLE FOLDING UTILITY TRAILER

30



ITEM NUMBER

MFT4X8

UPC

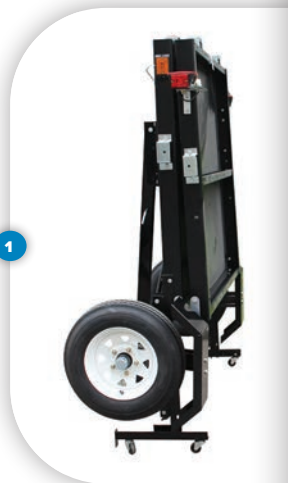
827518007150

DESCRIPTION

The trailer you've always needed has arrived with the DK2 MFT4X8 folding trailer kit. High-performing, durable and versatile, this trailer is ready for work. Built with a patented welded steel frame and deck for added strength and easy assembly, you'll spend less time reading manuals and more time on the road. The DK2 MFT4X8 is coated with high-performance anti-slip textured UV powder, all while maintaining its complete folding functionality. When it comes to trailers – there's truly nothing like it.

SPECIFICATION

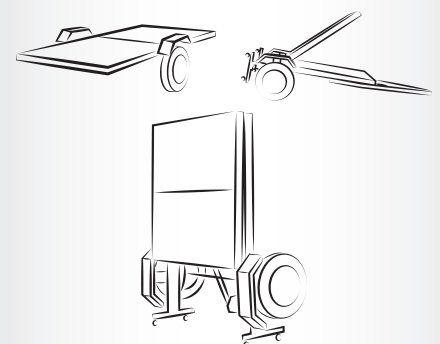
PAYLOAD CAPACITY	1,450lb (657.7kg)
GVWR	1,720lb (780.2kg)
WHEELS & TIRES	D.O.T. 5.30-12 6-ply tire, 80 PSI (5.5 Bar) cold
MATERIAL	Fully welded heavy-duty UV powder coated tubular steel
RAILS	Open design, tubular steel (sold separately)
FLOORING	Solid steel, anti-slip textured UV powder coated steel
LIGHTING	Pre-wired, Quick-connect D.O.T LED with flat 4-wire harness and connector
BED DIMENSIONS	96" (L) x 48" (W) 243.8cm (L) x 121.9cm (W)
DIMENSIONS	135" (L) x 62.3" (W) x 20" (H) 342.9cm (L) x 158.2cm (W) x 50.8cm (H)
WEIGHT	262lb (118.8kg)
SHIPPING DIMENSIONS	48.4" (L) x 62.2" (W) x 7.9" (H) 122.9cm (L) x 158cm (W) x 20.1cm (H)
SHIPPING WEIGHT	300lb (136.1kg)
WARRANTY	1-year limited



FEATURES

- Folding design to fit into compact spaces vertically **1**
- Constructed with fully welded heavy-duty UV powder coated tubular steel
- Solid steel bed with high-performance anti-slip textured UV powder coating **2**
- 5.30-12 6-ply tires **3**
- Trolley wheels for easy stowaway transport while folded **4**
- Pre-wired quick-connect D.O.T LED lighting with flat 4-wire harness and connector
- 2" (5.08cm) coupler with safety chain and S-hook
- 8 stake holes for the MFT4X8RK fully welded UV powder coated tubular steel open rail kit **(sold separately)** **5**
- Includes all necessary paperwork for registration

FOLDING DESIGN



MFT4X8

4FT x 8FT SINGLE AXLE FOLDING UTILITY TRAILER

1

2

5

3

4



SCAN ME

**FORGE
YOUR
OWN
PATH.**

DIA[®]

