

# DKA<sup>®</sup>



NOVEMBER 2023

# NEW PRODUCT CATALOG



DK2 is a leading manufacturer of power products and automotive accessory items. Our line has expanded into 6 categories of products; Snow Plows, Outdoor Power Equipment, Trailers, Auto Accessories, Winches and our newest addition: Cordless Tools.

We believe in providing quality first and are focused on delivering our products to our customers on time and in accordance with their ever changing needs.

We believe that our business can – and should – have a positive impact on the communities we serve.

With Distribution Centres in both Canada and the US, we service a wide range of wholesale and retail channels by maintaining our commitment of providing products that are designed and created with high ethical standards.

**DKA**  **POWER**



**MADE FOR THE  
HARD WORKING  
CUSTOMER.**



## 4-INCH DISK CHIPPER

### ITEM NUMBER

OPC514

### UPC

827518007266



6

### DESCRIPTION

Introducing the OPC514 4-inch disk chipper, powered by a KOHLER® Command PRO® CH440 14HP 429cc engine that gives you the power to devour trees and branches up to 4.5 inches in diameter.

This unit's expulsion chute is perfect for pickup truck bed height, and its dual-belt drive disk chipping capability keeps the chipper more compact than other comparable models.

The OPC514 is also D.O.T. approved and should be towed at a maximum of 25 MPH with the included 2" hitch receiver, tow bar and free jack, this unit can be moved to different locations with ease.

### SPECIFICATION

<b>ENGINE</b>	KOHLER® Command PRO® CH440 14HP 429cc
<b>GEARBOX</b>	Direct drive 22.7ft/lb (14.5Nm) gross torque
<b>WHEELS &amp; TIRES</b>	D.O.T. approved 4.80-8 Ø16.1" (Ø40.9cm) OD x 3.75" (9.5cm)
<b>CHIPPING CAPACITY</b>	Ø4.5" (Ø11.4cm)
<b>CUTTER DISK</b>	Dual-belt drive 0.67" (1.7cm) x Ø35.4" (Ø90cm) centrifugal clutch
<b>SELF-FEEDING</b>	Auto blade feeding
<b>EXPULSION CHUTE</b>	Adjustable
<b>COUPLER</b>	2" (5.08cm)
<b>DIMENSIONS</b>	89.4" (L) x 39.4" (W) x 65.2" (H) 227.1cm (L) x 100.1cm (W) x 165.6cm (H)
<b>WEIGHT</b>	573lb (259.9kg)
<b>SHIPPING DIMENSIONS</b>	41.4" (L) x 30.4" (W) x 49.3" (H) 105.2cm (L) x 77.2cm (W) x 125.2cm (H)
<b>SHIPPING WEIGHT</b>	595lb (269.9kg)
<b>WARRANTY</b>	3-year KOHLER® engine 1-year DK2 chassis



### FEATURES

- Powered by a KOHLER® Command PRO® CH440 14HP 429cc engine **1**
- Chips through trees and branches up to 4.5" (11.4cm) in diameter.
- Built with dual-belt drive 0.67" (1.7cm) x Ø35.4" (Ø90cm) centrifugal clutch disk **2**
- Tow bar and jack included **3**
- D.O.T. approved 4.80-8 Ø16.1" (Ø40.9cm) tires to move the unit to different job sites easily
- Designed to be pickup truck bed height for effortless chip loading
- Tool-free disk chamber access
- Includes 3-year KOHLER® engine and 1-year DK2 chassis warranty
- **NOT HIGHWAY TOWABLE AND MAX SPEED 25MPH (40KM/H)**



## 4-INCH KINETIC DRUM CHIPPER

### ITEM NUMBER

OPC524

7

### UPC

827518007259

### DESCRIPTION

The OPC524 4-inch kinetic chipper is powered by a KOHLER® Command PRO® CH270 7HP 208cc engine and features dual swing chutes, double edge reversible high-speed cutting blades, bearing-mounted ATV tires and rims and built in toolbox with an extended load chute with safety e-stop.

The engine delivers 10.5ft/lb torque for superior cutting performance, and the dual V-belt direct drive and kinetic cyclonic drum pulverize up to 4-inch diameter trees. The tool-free dual swing chutes quickly open for easy drum access. The feed chute features dual integrated handles for easy equipment moving, and finally this machine comes equipped with a quick-drop stand, and a 1-7/8 inch ball removable tow bar to move around job sites with ease.

### SPECIFICATION

<b>ENGINE</b>	KOHLER® Command PRO® CH270 7HP 208cc
<b>GEARBOX</b>	Direct drive 10.7ft/lb (14.5Nm) gross torque
<b>WHEELS &amp; TIRES</b>	175/70-6 Ø13.5" (Ø34.3cm) OD x 5" (12.7cm) tires on Ø6" (15.2cm) x 4.5" (11.4cm) bearing-mounted ATV rims
<b>CHIPPING CAPACITY</b>	Ø4" (Ø10.16cm)
<b>CUTTERS</b>	Double edge reversible chipper blades
<b>CHIPPER</b>	Auto-adjusting up to Ø4" (Ø10.16cm) trees and brush
<b>EXPULSION CHUTE</b>	Tool-free swing open and 180° adjustable
<b>COUPLER</b>	1-7/8" (4.76cm)
<b>DIMENSIONS</b>	91" (L) x 30" (W) x 46" (H) 231.1cm (L) x 76.2cm (W) x 116.8cm (H)
<b>WEIGHT</b>	300lb (136.1kg)
<b>SHIPPING DIMENSIONS</b>	34" (L) x 22" (W) x 35" (H) 86.4cm (L) x 55.9cm (W) x 88.9cm (H)
<b>SHIPPING WEIGHT</b>	330lb (149.7kg)
<b>WARRANTY</b>	3-year KOHLER® engine 1-year DK2 chassis



### FEATURES

- Powered by a KOHLER® Command PRO® CH270 7HP 208cc engine **1**
- Chips through trees and branches up to 4" (10.2cm) in diameter
- Dual-belt drive drum transmission with double edge reversible cutting blades for trees and brush up to 4" (10.2cm) in diameter **2**
- 175/70-6 Ø13.5" (Ø34.3cm) OD x 5" (12.7cm) tires on Ø6" (Ø15.2cm) x 4.5" (11.4cm) bearing-mounted ATV rims for off-road performance **3**
- Extra-large extended feed chute with integrated equipment moving handles and E-stop safety shutoff **4**
- Dual tool-free swing open chutes for easy drum access
- 180° tool-free rotational spout on expulsion chute
- Removable tow bar with 1-7/8" (4.76cm) hitch receiver
- Includes 3-year KOHLER® engine and 1-year DK2 chassis warranty
- **OFF-ROAD ONLY AND MAX SPEED 15MPH (24KM/H)**



## 5-INCH KINETIC DRUM CHIPPER

### ITEM NUMBER

OPC525

### UPC

827518008560

8



### DESCRIPTION

The OPC525 5-inch kinetic chipper is powered by a KOHLER® Command PRO® CH395 9.5HP 277cc engine and features dual swing chutes, double edge reversible high-speed cutting blades, bearing-mounted ATV tires and rims and built in toolbox with an extended load chute with safety e-stop.

The engine delivers 13.9ft/lb torque for superior cutting performance, and the dual V-belt direct drive and kinetic cyclonic drum pulverize up to 5-inch diameter trees. The tool-free dual swing chutes quickly open for easy drum access. The feed chute features dual integrated handles for easy equipment moving, and finally this machine comes equipped with a quick-drop stand, and a 1-7/8 inch ball removable tow bar to move around job sites with ease.

### SPECIFICATION

**ENGINE** KOHLER® Command PRO® CH395 9.5HP 277cc

**GEARBOX** Direct drive 13.9ft/lb (18.8Nm) gross torque

**WHEELS & TIRES** 175/70-6 Ø13.5" (Ø34.3cm) OD x 5" (12.7cm) tires on Ø6" (15.2cm) x 4.5" (11.4cm) bearing-mounted ATV rims

**CHIPPING CAPACITY** Ø5" (Ø12.7cm)

**CUTTERS** Double edge reversible chipper blades

**CHIPPER** Auto-adjusting up to Ø5" (Ø12.7cm) trees and brush

**EXPULSION CHUTE** Tool-free swing open and 180° adjustable

**COUPLER** 1-7/8" (4.76cm)

**DIMENSIONS** 91" (L) x 30" (W) x 46" (H)  
231.1cm (L) x 76.2cm (W) x 116.8cm (H)

**WEIGHT** 308.6lb (140kg)

**SHIPPING DIMENSIONS** 35.8" (L) x 22" (W) x 37.8" (H)  
91cm (L) x 56cm (W) x 96cm (H)

**SHIPPING WEIGHT** 352.7lb (160kg)

**WARRANTY** 3-year KOHLER® engine  
1-year DK2 chassis



### FEATURES

- Powered by a KOHLER® Command PRO® CH395 9.5HP 277cc engine **1**
- Chips through trees and branches up to 5" (12.7cm) in diameter
- Dual-belt drive drum transmission with double edge reversible cutting blades for trees and brush up to 5" (12.7cm) in diameter **2**
- 175/70-6 Ø13.5" (Ø34.3cm) OD x 5" (12.7cm) tires on Ø6" (Ø15.2cm) x 4.5" (11.4cm) bearing-mounted ATV rims for off-road performance **3**
- Extra-large extended feed chute with integrated equipment moving handles and E-stop safety shutoff **4**
- Dual tool-free swing open chutes for easy drum access
- 180° tool-free rotational spout on expulsion chute
- Removable tow bar with 1-7/8" (4.76cm) hitch receiver
- Includes 3-year KOHLER® engine and 1-year DK2 chassis warranty
- **OFF-ROAD ONLY AND MAX SPEED 15MPH (24KM/H)**





## 27-TON HORIZONTAL & VERTICAL HYDRAULIC LOG SPLITTER

### ITEM NUMBER

OPS227

9

### UPC

827518008577

### DESCRIPTION

Introducing the 27-ton horizontal and vertical hydraulic log splitter. The DK2 POWER OPS227 is driven by a powerful KOHLER® SH265 6.5HP 196cc engine. This machine is capable of splitting up to 25.5 inches in length and 19.6 inches in diameter with uncompromising force at a cycle speed of 13 seconds, all while using the full potential of its 8-inch heat-treated steel wedge. The OPS227 sits on a 37-inch wheelbase equipped with 16-inch O.D. 4.8-8 tires and includes a tow bar for easy job site moving.

### SPECIFICATION

ENGINE	KOHLER® SH265 6.5HP 196cc
SPLITTING CAPACITY	25.5" (L) x Ø19.6" 64.7cm (L) x Ø54.8cm
CYCLE TIME	13 seconds
HYDRAULIC CYLINDER	Ø4" (Ø10.2cm) x 24" (60.9cm) stroke
HYDRAULIC FLOW RATE	15GPM (56.8LPM), two-stage
HYDRAULIC OIL CAPACITY	6.5gal (24.6L)
TYPE OF HYDRAULIC OIL	AW32/AW46
HYDRAULIC OIL FILTER	10 micron (1250 mesh) paper with NBR (Buna-N) seals
WEDGE	8" (20.3cm) high, heat-treated steel
BEAM	8" (20.3cm) foot plate
VALVE	Auto-retract with adjustable detent
WHEELS & TIRES	D.O.T. approved 4.80-8 Ø16" (Ø40.6cm) OD
WHEELBASE	37" (94cm)
COUPLER	2" (5.08cm) ball with safety chains
ASSEMBLED DIMENSIONS & WEIGHT	87.4" (L) x 49.2" (W) x 35.8" (H) @ 507lb 222cm (L) x 125cm (W) x 91cm (H) @ 230kg
SHIPPING DIMENSIONS & WEIGHT	70.9" (L) x 31.5" (W) x 19.7" (H) @ 551.2lb 180cm (L) x 80cm (W) x 50cm (H) @ 250kg
WARRANTY	2-year KOHLER® parts and labor 1-year DK2 chassis



### FEATURES

- Powered by a KOHLER® SH265 6.5HP 196cc engine **1**
- 25.5" x Ø19.6" (64.8cm x Ø49.8cm) log capacity
- 8" (20.3cm) heat-treated steel wedge **2**
- 13-second cycling time
- D.O.T. approved Ø16" (Ø40.6cm) OD road tires sitting on a 37" (94cm) wheelbase **3**
- Folds 90° for both horizontal and vertical log splitting capability **4**
- Two-stage 15GPM (56.8LPM) pump
- 6.5 gallon (24.6 litres) hydraulic fluid capacity
- Auto-retracting adjustable detent valve
- 2" (5.08cm) ball coupler with safety chains **5**
- Includes 2-year KOHLER® engine parts and labor and 1-year DK2 chassis warranty
- **NOT HIGHWAY TOWABLE AND MAX SPEED 25MPH (40KM/H)**



## 32-TON HORIZONTAL & VERTICAL HYDRAULIC LOG SPLITTER

10



### DESCRIPTION

Introducing the 32-ton horizontal and vertical hydraulic log splitter. The DK2 POWER OPS232 is driven by a powerful KOHLER® SH265 6.5HP 196cc engine. This machine is capable of splitting up to 25.5 inches in length and 21.6 inches in diameter with uncompromising force at a cycle speed of 13 seconds, all while using the full potential of its 8.5-inch heat-treated steel wedge. The OPS232 sits on a 37-inch wheelbase equipped with 16-inch O.D. 4.8-8 tires and includes a tow bar for easy job site moving.

### SPECIFICATION

ENGINE	KOHLER® SH265 6.5HP 196cc
SPLITTING CAPACITY	25.5" (L) x Ø21.6" 64.7cm (L) x Ø54.8cm
CYCLE TIME	13 seconds
HYDRAULIC CYLINDER	Ø4.5" (Ø11.4cm) x 24" (60.9cm) stroke
HYDRAULIC FLOW RATE	15GPM (56.8LPM), two-stage
HYDRAULIC OIL CAPACITY	8.5gal (32L)
TYPE OF HYDRAULIC OIL	AW32/AW46
HYDRAULIC OIL FILTER	10 micron (1250 mesh) paper with NBR (Buna-N) seals
WEDGE	8.5" (21.6cm) high, heat-treated steel
BEAM	8.5" (21.6cm) foot plate
VALVE	Auto-retract with adjustable detent
WHEELS & TIRES	D.O.T. approved 4.80-8 Ø16" (Ø40.6cm) OD
WHEELBASE	37" (94cm)
COUPLER	2" (5.08cm) ball with safety chains
ASSEMBLED DIMENSIONS & WEIGHT	89.4" (L) x 51.2" (W) x 37.4" (H) @ 529.1lb 227cm (L) x 130cm (W) x 95cm (H) @ 240kg
SHIPPING DIMENSIONS & WEIGHT	70.9" (L) x 31.5" (W) x 19.7" (H) @ 573lb 180cm (L) x 80cm (W) x 50cm (H) @ 260kg
WARRANTY	2-year KOHLER® parts and labor 1-year DK2 chassis



### ITEM NUMBER

OPS232

### UPC

827518008584

### FEATURES

- Powered by a KOHLER® SH265 6.5HP 196cc engine **1**
- 25.5" x Ø21.6" (64.8cm x Ø54.8cm) log capacity
- 8.5" (21.6cm) heat-treated steel wedge **2**
- 13-second cycling time
- D.O.T. approved Ø16" (Ø40.6cm) OD road tires sitting on a 37" (94cm) wheelbase **3**
- Folds 90° for both horizontal and vertical log splitting capability **4**
- Two-stage 15GPM (56.8LPM) pump
- 8.5 gallon (32 litres) hydraulic fluid capacity
- Auto-retracting adjustable detent valve
- 2" (5.08cm) ball coupler with safety chains **5**
- Includes 2-year KOHLER® engine parts and labor and 1-year DK2 chassis warranty
- **NOT HIGHWAY TOWABLE AND MAX SPEED 25MPH (40KM/H)**



## 17-INCH x 21-INCH PLATE COMPACTOR

### ITEM NUMBER

OPV425

11

### UPC

827518008249

### DESCRIPTION

Featuring a large 17-inch by 21-inch base plate, the OPV425 plate compactor doesn't disappoint when it comes to compacting performance, and the power that drives this machine comes from a KOHLER® Command PRO® CH270 7HP 208cc engine.

With a compacting force of 3,600lb (16kn) at 4,750 vibrations per minute, this unit is the perfect solution for your compacting needs.

Designed with conveniently placed, 27.5-inch folding handles for easy transportation and storage, open design to reduce dirt build-up, and a central-mounted, fully enclosed exciter for even compacting force over the entire base plate.

### SPECIFICATION

<b>ENGINE</b>	KOHLER® Command PRO® CH270 7HP 208cc
<b>BASE PLATE</b>	17" (43.2cm) x 21" (53.3cm)
<b>HANDLE LENGTH</b>	27.5" (69.9cm)
<b>VIBRATION FREQUENCY</b>	4,750VPM
<b>CENTRIFUGAL FORCE</b>	3,600lb/ft (16kn)
<b>COMPACTING DEPTH</b>	11.8" (30cm)
<b>SPEED</b>	12.6in/sec (32cm/sec)
<b>DIMENSIONS</b>	17" (L) x 21" (W) x 29" (H) 43.2cm (L) x 53.3cm (W) x 73.7cm (H)
<b>WEIGHT</b>	198.4lb (90kg)
<b>SHIPPING DIMENSIONS</b>	18.9" (L) x 26.4" (W) x 28.3" (H) 48cm (L) x 67.1cm (W) x 72cm (H)
<b>SHIPPING WEIGHT</b>	227lb (103kg)
<b>WARRANTY</b>	3-year KOHLER® engine 1-year DK2 chassis



### FEATURES

- Powered by a KOHLER® CH270 7HP 208cc Command PRO® Commercial Engine **1**
- 17" (43.2cm) x 21" (53.3cm) solid steel base plate
- Conveniently placed 27.5" (69.9cm) folding handles for easier transportation and stowaway **2**
- Open design to reduce dirt and residue build-up **3**
- Central-mounted, fully enclosed exciter for even compacting force over the entire base plate **4**
- Includes 3-year KOHLER® engine and 1-year DK2 chassis warranty



# DIAMIR

# TWIN CYLINDER 1HP 2-GALLON OIL-FREE SILENT ELECTRIC AIR COMPRESSOR

## ITEM NUMBER

AC02G

13

## UPC

827518008249

## FEATURES

- Powered by a twin cylinder 1HP (750W) 120V brushless electric motor <sup>1</sup>
- Holds up to 2gal (7.6L) of compressed air at 125 PSI (8.6 Bar)
- Extremely quiet 67dB operating sound level
- Durable, spring-loaded pressure switch for easy on/off control
- 2 quick-connect hose ports <sup>2</sup>
- 2 clear analog pressure gauges <sup>3</sup>
- Regulator dial to control the amount of air pressure released at the hose outlets <sup>4</sup>
- Compact, lightweight design with ergonomic handle for easy mobility <sup>5</sup>
- Release valve to remove air pressure from the tank
- Drain petcock drains moisture from the tank and reduce risk of corrosion
- Oil-free operation - no lubrication required
- Thermal overload protection system automatically shuts off the electric motor if it becomes overheated
- Includes 1-year limited DK2 warranty

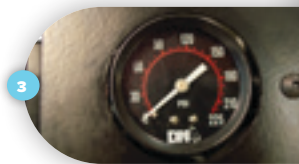
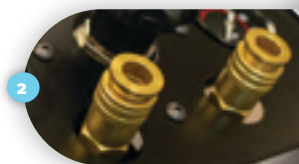


## DESCRIPTION

The AC02G is a silent electric oil-free air compressor that can be plugged into any nominal 120V outlet and ready in seconds at 125 PSI with 2 gallons of available compressed air.

This unit comes equipped with a brushless electric motor, 2 quick-connect hose ports with a regulator dial so the tools are given the air pressure they need to operate at their full potential, and when it comes to moving the AC02G around the job site, it couldn't be any easier with its lightweight, compact design and ergonomic lift handle.

When the job is done and it's time to pack up, just turn the pressure switch off, unplug, and pull the release valve to remove any remaining air pressure.



## SPECIFICATION

**POWER** 550W/0.75HP / 750W/1.0HP

**VOLTAGE** 110V / 120V

**FREQUENCY** 60Hz

**SPEED** 1,700RPM

**DISPLACEMENT** 3.8CFM / 4.0CFM

**CAPACITY** 2gal (7.6L)

**MAX PRESSURE** 125 PSI (8.6 Bar)

**DECIBELS** 67dB

**DIMENSIONS** 17.3" (L) x 15.8" (W) x 13.9" (H)  
44cm (L) x 40.1cm (W) x 35.3cm (H)

**WEIGHT** 43lb (19.5kg)

**SHIPPING DIMENSIONS** 18.9" (L) x 16.9" (W) x 15.6" (H)  
48cm (L) x 43cm (W) x 39.5cm (H)

**SHIPPING WEIGHT** 46.3lb (21kg)

**WARRANTY** 1-year limited

## TWIN CYLINDER 1HP 4-GALLON OIL-FREE SILENT ELECTRIC AIR COMPRESSOR

14



### DESCRIPTION

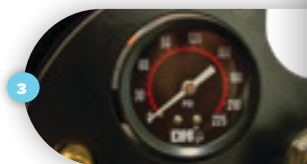
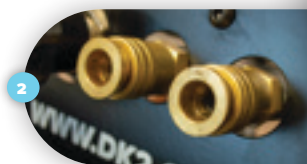
The AC04G is a silent electric oil-free air compressor that can be plugged into any nominal 120V outlet and ready in seconds at 125 PSI with 4 gallons of available compressed air.

This unit comes equipped with a brushless electric motor, 2 quick-connect hose ports with a regulator dial so the tools are given the air pressure they need to operate at their full potential, and when it comes to moving the AC04G around the job site, it couldn't be any easier with its lightweight, compact design and ergonomic lift handle.

When the job is done and it's time to pack up, just turn the pressure switch off, unplug, and pull the release valve to remove any remaining air pressure.

### SPECIFICATION

<b>POWER</b>	550W/0.75HP / 750W/1.0HP
<b>VOLTAGE</b>	110V / 120V
<b>FREQUENCY</b>	60Hz
<b>SPEED</b>	1,700RPM
<b>DISPLACEMENT</b>	3.8CFM / 4.0CFM
<b>CAPACITY</b>	4gal (15.1L)
<b>MAX PRESSURE</b>	125 PSI (8.6 Bar)
<b>DECIBELS</b>	67dB
<b>DIMENSIONS</b>	17.4" (L) x 15.6" (W) x 20.8" (H) 44.2cm (L) x 39.6cm (W) x 52.8cm (H)
<b>WEIGHT</b>	54lb (24.5kg)
<b>SHIPPING DIMENSIONS</b>	18.7" (L) x 16.5" (W) x 22.4" (H) 47.5cm (L) x 41.9cm (W) x 56.9cm (H)
<b>SHIPPING WEIGHT</b>	57.3lb (26kg)
<b>WARRANTY</b>	1-year limited



### ITEM NUMBER

AC04G

### UPC

827518008799

### FEATURES

- Powered by a twin cylinder 1HP (750W) 120V brushless electric motor **1**
- Holds up to 4gal (15.1L) of compressed air at 125 PSI (8.6 Bar)
- Extremely quiet 67dB operating sound level
- Durable, spring-loaded pressure switch for easy on/off control
- 2 quick-connect hose ports **2**
- 2 clear analog pressure gauges **3**
- Regulator dial to control the amount of air pressure released at the hose outlets **4**
- Compact, lightweight design with ergonomic handle for easy mobility **5**
- Release valve to remove air pressure from the tank
- Drain petcock drains moisture from the tank and reduce risk of corrosion
- Oil-free operation - no lubrication required
- Thermal overload protection system automatically shuts off the electric motor if it becomes overheated
- Includes 1-year limited DK2 warranty

# TWIN CYLINDER 2HP 10-GALLON OIL-FREE SILENT ELECTRIC AIR COMPRESSOR

## ITEM NUMBER

AC10G

15

## UPC

827518008775

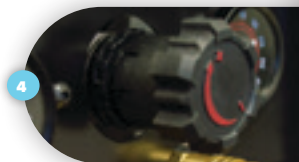


## DESCRIPTION

The AC10G is a silent electric oil-free air compressor that can be plugged into any nominal 120V outlet and ready in seconds at 150 PSI with 10 gallons of available compressed air. This unit comes equipped with a brushless electric motor, 2 quick-connect hose ports with a regulator dial so the tools are given the air pressure they need to operate at their full potential, and when it comes to moving the AC10G around the job site, it couldn't be any easier with its ergonomic lift handle and never flat wheels and tires. When the job is done and it's time to pack up, just turn the pressure switch off, unplug, and pull the release valve to remove any remaining air pressure.

## SPECIFICATION

<b>POWER</b>	1491.4W / 2HP
<b>VOLTAGE</b>	120V AC
<b>FREQUENCY</b>	60Hz
<b>SPEED</b>	1,700RPM
<b>DISPLACEMENT</b>	4.5CFM (90 PSI / 6.2 Bar) 5.5CFM (40 PSI / 2.8 Bar)
<b>TANK</b>	Vertical ASME
<b>CAPACITY</b>	10gal (37.9L)
<b>MAX PRESSURE</b>	150 PSI (10.3 Bar)
<b>DECIBELS</b>	67dB
<b>DIMENSIONS</b>	19.5" (L) x 16" (W) x 32.5" (H) 49.5cm (L) x 40.6cm (W) x 82.6cm (H)
<b>WEIGHT</b>	88.2lb (40kg)
<b>SHIPPING DIMENSIONS</b>	20" (L) x 19" (W) x 36.3" (H) 50.8cm (L) x 48.3cm (W) x 92.2cm (H)
<b>SHIPPING WEIGHT</b>	97lb (44kg)
<b>WARRANTY</b>	1-year limited



## FEATURES

- Powered by a twin cylinder 2HP (1491.4W) 120V AC brushless electric motor **1**
- Holds up to 10gal (37.9L) of compressed air at 150 PSI (10.3 Bar)
- Extremely quiet 67dB operating sound level
- Durable, spring-loaded pressure switch for easy on/off control
- 2 quick-connect hose ports **2**
- 2 clear analog pressure gauges **3**
- Regulator dial to control the amount of air pressure released at the hose outlets **4**
- Ergonomic handle **5**
- Never flat Ø8" (Ø20.3cm) OD x 1.75" (4.4cm) tires for easy mobility **6**
- Release valve to remove air pressure from the tank
- Drain petcock drains moisture from the tank and reduce risk of corrosion
- Oil-free operation - no lubrication required
- Thermal overload protection system automatically shuts off the electric motor if it becomes overheated
- Includes 1-year limited DK2 warranty

## TWIN CYLINDER 2HP 20-GALLON OIL-FREE SILENT ELECTRIC AIR COMPRESSOR

16

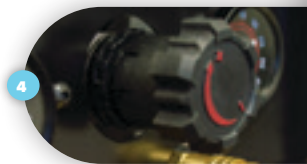


### DESCRIPTION

The AC20G is a silent electric oil-free air compressor that can be plugged into any nominal 120V outlet and ready in seconds at 150 PSI with 20 gallons of available compressed air. This unit comes equipped with a brushless electric motor, 2 quick-connect hose ports with a regulator dial so the tools are given the air pressure they need to operate at their full potential, and when it comes to moving the AC10G around the job site, it couldn't be any easier with its ergonomic lift handle and never flat wheels and tires. When the job is done and it's time to pack up, just turn the pressure switch off, unplug, and pull the release valve to remove any remaining air pressure.

### SPECIFICATION

<b>POWER</b>	1491.4W / 2HP
<b>VOLTAGE</b>	120V AC
<b>FREQUENCY</b>	60Hz
<b>SPEED</b>	1,700RPM
<b>DISPLACEMENT</b>	4.5CFM (90 PSI / 6.2 Bar) 5.5CFM (40 PSI / 2.8 Bar)
<b>TANK</b>	Vertical ASME
<b>CAPACITY</b>	20gal (75.7L)
<b>MAX PRESSURE</b>	150 PSI (10.3 Bar)
<b>DECIBELS</b>	67dB
<b>DIMENSIONS</b>	19.5" (L) x 16" (W) x 44.5" (H) 49.5cm (L) x 40.6cm (W) x 113cm (H)
<b>WEIGHT</b>	106.9lb (48.5kg)
<b>SHIPPING DIMENSIONS</b>	20" (L) x 18.3" (W) x 47.3" (H) 50.8cm (L) x 46.5cm (W) x 120.1cm (H)
<b>SHIPPING WEIGHT</b>	116.8lb (53kg)
<b>WARRANTY</b>	1-year limited



### ITEM NUMBER

AC20G

### UPC

827518008782

### FEATURES

- Powered by a twin cylinder 2HP (1491.4W) 120V AC brushless electric motor <sup>1</sup>
- Holds up to 20gal (75.7L) of compressed air at 150 PSI (10.3 Bar)
- Extremely quiet 67dB operating sound level
- Durable, spring-loaded pressure switch for easy on/off control
- 2 quick-connect hose ports <sup>2</sup>
- 2 clear analog pressure gauges <sup>3</sup>
- Regulator dial to control the amount of air pressure released at the hose outlets <sup>4</sup>
- Ergonomic handle <sup>5</sup>
- Ø8" (Ø20.3cm) OD x 1.75" (4.4cm) tires for easy mobility <sup>6</sup>
- Release valve to remove air pressure from the tank
- Drain petcock drains moisture from the tank and reduce risk of corrosion
- Oil-free operation - no lubrication required
- Thermal overload protection system automatically shuts off the electric motor if it becomes overheated
- Includes 1-year limited DK2 warranty



**DK** **TRAILERS**®



**FOR THE  
LONG HAUL.**



## 4FT x 6FT SINGLE AXLE OPEN RAIL GALVANIZED LANDSCAPE TRAILER

20



### ITEM NUMBER

MMT4X6OG

### UPC

827518008119

### DESCRIPTION

The MMT4X6OG is specially designed for handling a variety of hauling tasks; the perfect solution for anyone needing to pull a trailer behind a small vehicle, full size truck, lawn tractor, or ATV and engineered to provide exceptional balance and ease of mobility without giving up one ounce of payload capacity. Made from 100% welded hot-dipped galvanized tubular steel with expanded steel decks and DK2's back gate design is multi-purpose and can sit flat in the bed, up in a vertical position, or lying down as a ramp.

### SPECIFICATION

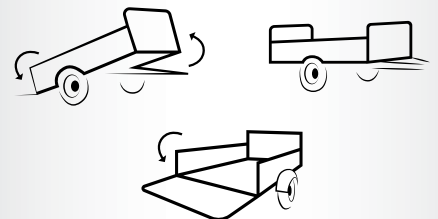
<b>PAYLOAD CAPACITY</b>	1,295lb (587.4kg)
<b>GVWR</b>	1,600lb (725.7kg)
<b>WHEELS &amp; TIRES</b>	D.O.T. 4.80-12 bias tire on 12" (30.5cm) rim with 5 x 4.5" (11.4cm) bolt pattern
<b>MATERIAL</b>	Fully welded heavy-duty hot-dipped galvanized tubular steel
<b>RAILS</b>	Open design, tubular steel
<b>GATE</b>	36" (91.4cm) square tube steel ramp and round tube steel exterior
<b>FLOORING</b>	Corrugated panel
<b>DUMP BED</b>	2-position, axle-mounted with quick-release lock pin
<b>LIGHTING</b>	Pre-wired, quick-connect D.O.T LED
<b>BED DIMENSIONS</b>	72" (L) x 48" (W) 182.9cm (L) x 121.9cm (W)
<b>FLOOR HEIGHT</b>	18" (45.7cm)
<b>HITCH HEIGHT</b>	14" (35.6cm)
<b>DIMENSIONS</b>	152" (L) x 64" (W) x 26" (H) 386.1cm (L) x 162.6cm (W) x 66cm (H)
<b>WEIGHT</b>	302lb (137kg)
<b>SHIPPING DIMENSIONS</b>	78" (L) x 52" (W) x 9" (H) 198.1cm (L) x 132.1cm (W) x 22.9cm (H)
<b>SHIPPING WEIGHT</b>	305lb (138.3kg)
<b>WARRANTY</b>	1-year limited



### FEATURES

- Constructed with fully welded heavy-duty hot-dipped galvanized tubular steel
- Tubular steel open rail design **1**
- Corrugated steel floor panel **2**
- 36" (91.4cm) square tube steel ramp and round tube steel exterior **3**
- Solid square tube cambered axle
- 2-position axle-mounted dump bed with quick release lock pin **4**
- D.O.T. 4.80-12 bias tires on a 12" (30.5cm) rim with 5 x 4.5" (11.4cm) bolt pattern **5**
- Heavy-duty tail light protectors
- Quick-connect D.O.T. LED lighting with side markers
- Ships in a single package
- 2" (5.08cm) coupler
- Includes all necessary paperwork for registration

## 3-IN-1 UTILITY TRAILER



## 4FT x 8FT SINGLE AXLE FOLDING UTILITY TRAILER

### ITEM NUMBER

MFT4X8

21

### UPC

827518007150

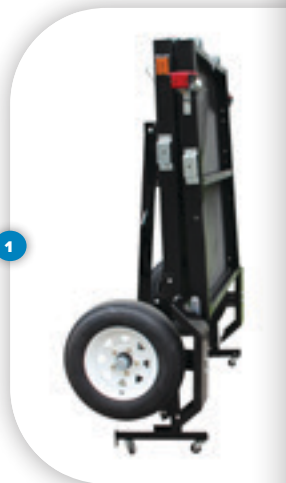


### DESCRIPTION

The trailer you've always needed has arrived with the DK2 MFT4X8 folding trailer kit. High-performing, durable and versatile, this trailer is ready for work. Built with a patented welded steel frame and deck for added strength and easy assembly, you'll spend less time reading manuals and more time on the road. The DK2 MFT4X8 is coated with high-performance anti-slip textured UV powder, all while maintaining its complete folding functionality. When it comes to trailers – there's truly nothing like it.

### SPECIFICATION

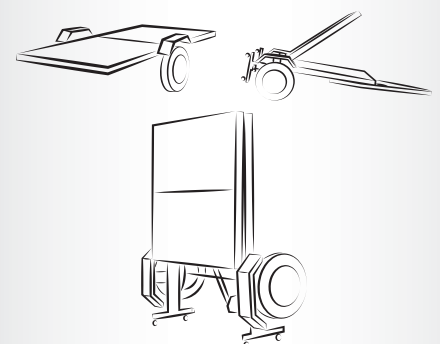
<b>PAYLOAD CAPACITY</b>	1,450lb (657.7kg)
<b>GVWR</b>	1,720lb (780.2kg)
<b>WHEELS &amp; TIRES</b>	D.O.T. 5.30-12 6-ply tire, 80 PSI (5.5 Bar) cold
<b>MATERIAL</b>	Fully welded heavy-duty UV powder coated tubular steel
<b>RAILS</b>	Open design, tubular steel <b>(sold separately)</b>
<b>FLOORING</b>	Solid steel, anti-slip textured UV powder coated steel
<b>LIGHTING</b>	Pre-wired, Quick-connect D.O.T LED with flat 4-wire harness and connector
<b>BED DIMENSIONS</b>	96" (L) x 48" (W) 243.8cm (L) x 121.9cm (W)
<b>DIMENSIONS</b>	135" (L) x 62.3" (W) x 20" (H) 342.9cm (L) x 158.2cm (W) x 50.8cm (H)
<b>WEIGHT</b>	262lb (118.8kg)
<b>SHIPPING DIMENSIONS</b>	48.4" (L) x 62.2" (W) x 7.9" (H) 122.9cm (L) x 158cm (W) x 20.1cm (H)
<b>SHIPPING WEIGHT</b>	300lb (136.1kg)
<b>WARRANTY</b>	1-year limited



### FEATURES

- Folding design to fit into compact spaces vertically **1**
- Constructed with fully welded heavy-duty UV powder coated tubular steel
- Solid steel bed with high-performance anti-slip textured UV powder coating **2**
- 5.30-12 6-ply tires **3**
- Trolley wheels for easy stowaway transport while folded **4**
- Pre-wired quick-connect D.O.T. LED lighting with flat 4-wire harness and connector
- 2" (5.08cm) coupler with safety chain and S-hook
- 8 stake holes for the MFT4X8RK fully welded UV powder coated tubular steel open rail kit **(sold separately)** **5**
- Includes all necessary paperwork for registration

### FOLDING DESIGN



## 6FT x 10FT SINGLE AXLE OPEN RAIL UTILITY TRAILER

22



### ITEM NUMBER

MMT6X10

### UPC

826518005593

### DESCRIPTION

Introducing the new MMT6X10 single axle open rail utility trailer, the largest in DK2's collection. Constructed with fully welded heavy-duty powder-coated tubular steel with a corrugated steel panel floor, you can count on this trailer to deliver long lasting reliability for all your hauling needs. It has a payload capacity of 1,950 pounds and sits on a solid square tube cambered axle equipped with D.O.T. 14-inch 175/80R14 tires. Load and unload this trailer with ease using the included 48-inch drive-up gate.

### SPECIFICATION

<b>PAYLOAD CAPACITY</b>	1,950lb (884.5kg)
<b>GVWR</b>	2,500lb (1,134kg)
<b>WHEELS &amp; TIRES</b>	14" (35.6cm) D.O.T. 175/80R14 radial tires
<b>MATERIAL</b>	Fully welded heavy-duty UV powder coated tubular steel
<b>SIDE PANELS</b>	Open design, tubular steel
<b>GATE</b>	49.3" (125.2cm) tubular and expanded mesh steel ramp
<b>FLOORING</b>	Corrugated reinforced steel panels
<b>DUMP BED</b>	2-position, axle-mounted with quick-release lock pin
<b>LIGHTING</b>	Pre-wired, quick-connect D.O.T LED
<b>BED DIMENSIONS</b>	120" (L) x 72" (W) 304.8cm (L) x 182.9cm (W)
<b>FLOOR HEIGHT</b>	20.2" (51.3cm)
<b>HITCH HEIGHT</b>	18.2" (46.2cm)
<b>DIMENSIONS</b>	166.1" (L) x 83.9" (W) x 71.1" (H) 421.9cm (L) x 213.1cm (W) x 180.6cm (H)
<b>WEIGHT</b>	640lb (290.3kg)
<b>SHIPPING DIMENSIONS</b>	83.1" (L) x 74" (W) x 10.2" (H) 211.1cm (L) x 188cm (W) x 25.9cm (H)
<b>SHIPPING WEIGHT</b>	650.4lb (295kg)
<b>WARRANTY</b>	1-year limited



### FEATURES

- Constructed with fully welded heavy-duty UV powder-coated tubular steel
- Corrugated reinforced steel floor panel **1**
- Tubular steel open rail design **2**
- 49.3" (125.2cm) tubular and expanded mesh steel rear ramp gate **3**
- Solid square tube cambered axle
- 2-position axle-mounted dump bed with quick release lock pin **4**
- 14" (35.6cm) D.O.T. 175/80R14 radial tires **5**
- Heavy-duty tail light protectors
- Quick-connect D.O.T. LED lighting with side markers
- Ships in a single package
- 2" (5.08cm) coupler on an A-frame tongue for added stability
- Includes all necessary paperwork for registration



NOVEMBER 2023

# **NEW PRODUCT CATALOG**

A background image of a wooded area with a pile of logs and a red and black tool in the foreground. The scene is brightly lit, suggesting a sunny day. The text is overlaid on the left side of the image.

**DIA**®

**FORGE  
YOUR  
OWN  
PATH.**