



CHIPPER ASSEMBLY GUIDE
MODEL: OPC504 and OPC506
4 and 6 INCH COMMERCIAL CHIPPER



DETAIL K2 INC.

DK2 POWER USA
4301 S Valley View Blvd STE 10-11
Las Vegas, NV 89103
1-702-331-5353

DETAIL K2, INC.
1080 Clay Avenue Unit 2
Burlington, Ontario, Canada L7L0A1

DK2 USA EAST
6245 Industrial Parkway
Whitehouse, OH 43571

PARTS AND SERVICE 702-331-5353 OR WWW.DK2POWER.COM CONTACT US

COMMERCIAL CHIPPER

SWING CHUTES
TOWABLE
KOHLER ENGINE



STEP 1: CHECK THE PACKING

Open and unpack all items. Leave lots of working space.
Inspect all parts.



NOTE: UPON INSPECTION OF PARTS IF YOU FIND ANY MISSING PARTS
PLEASE CALL DK2 POWER AT **702-331-5353** OR CONTACT US VIA OUR
WEBSITE WWW.DK2POWER.COM

PLEASE DO NOT RETURN TO THE STORE

STEP 2: INSTALL CHUTES

1. Install the feed chutes on the 2 hinges. To seat the hinge pins for the first time a rubber mallet may be used to tap the pins into the hinges. These are tight fitting to reduce vibration noise.
2. Close each Chute, and latch them,
3. Assemble the chip shield to the chip chute.
4. Plug the safety key shut off wire connectors together on the large chute.



STEP 3: INSTALL AXLE AND TIRES

1. Remove all hardware from axle.
2. Install with 4 bolts to machine body.
3. Install wheels with air stem facing out, then large washer, then nut, then turn by hand to tighten, back off nut to align hole and insert pin and secure.
4. Align wheel cap in groove and tap easy with a rubber mallet or a block of wood and a hammer until seated all around even into the groove.



STEP 4: INSTALL TOW BAR ASSY

1. Tip the unit back and rest the large chute on the ground.
2. Install with 4 bolts the front tow assembly.



STEP 5: INSTALL DROP STAND

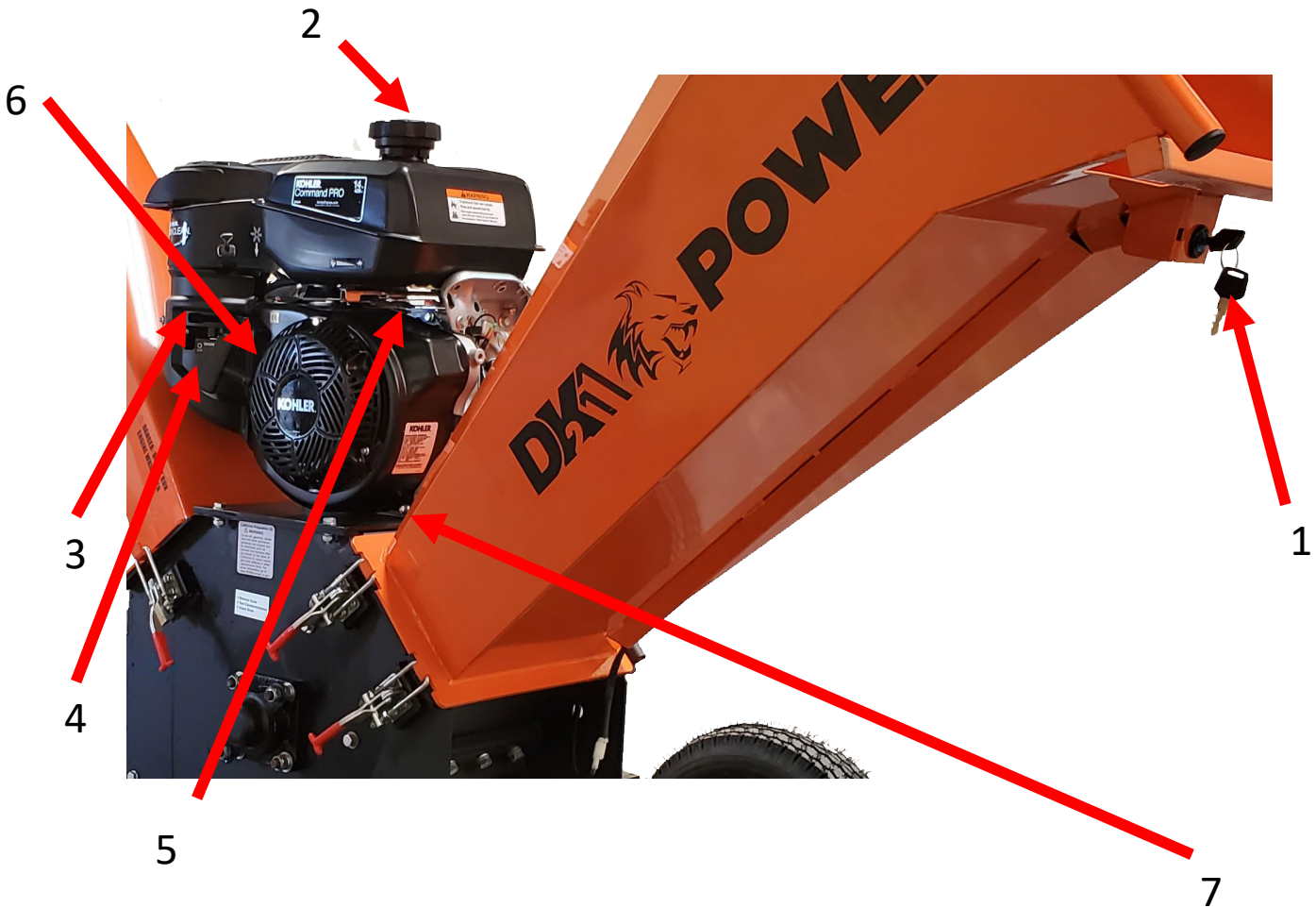
1. Install the drop stand and pin it.



1. Slide and lock the tow bar on and your all done.



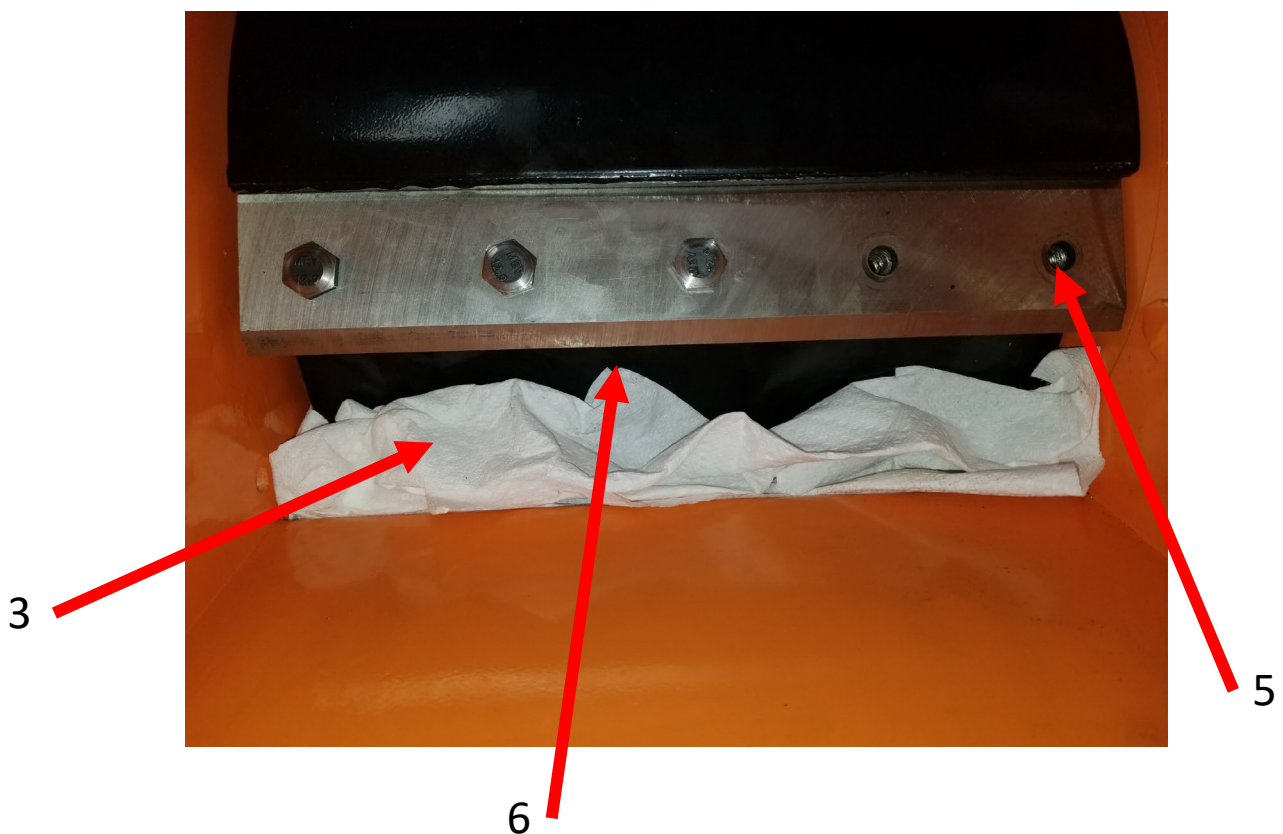
READ THE KOHLER ENGINE MANUAL SUPPLIED WITH YOUR UNIT FOR FULL ENGINE OPERATION, SAFETY, AND MAINTENANCE.

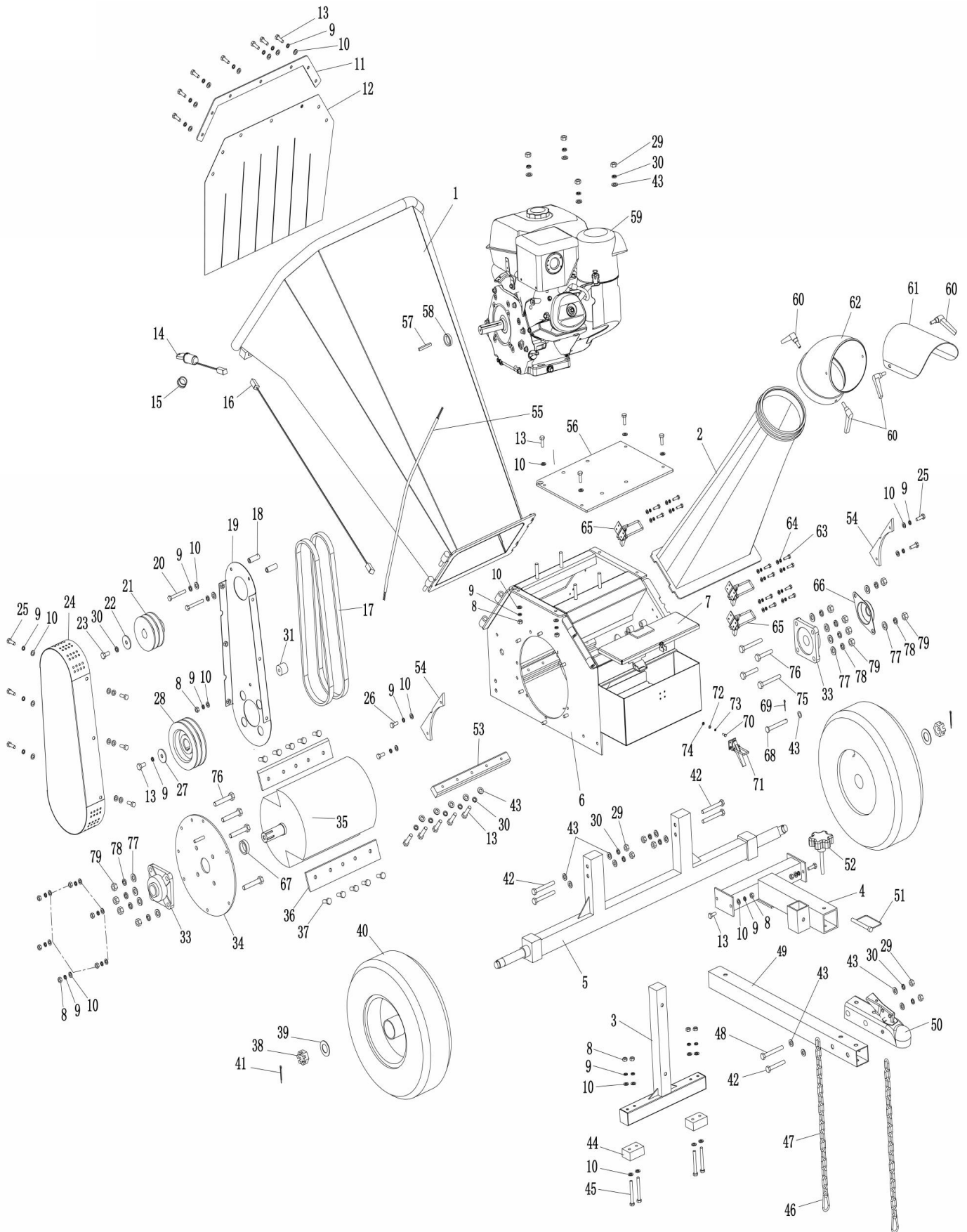


1	ON/OFF KEY LOCK
2	GAS – USE MID GRADE OR HIGHER
3	CHOKE – LEFT IS ON / RIGHT IS OFF (RUN POSITION)
4	GAS ON/OFF SWITCH – LEFT IS OFF / RIGHT IS ON
5	THROTTLE – RABBIT FAST / TURTLE SLOW
6	PULL STARTER – PULL TIGHT- THEN PULL START
7	OIL – FILL TO MARK 10W30, WILL NOT START IF OIL IS LOW, HAS LOW OIL SHUTOFF PROTECTION. 2 YELLOW CAPS ARE OIL FILL CAPS. USE EITHER ONE TO FILL OIL.

Your Chipper is equipped with dual REVERSABLE cutting blades.

1. Turn engine key off, remove key and unplug the spark plug.
2. Open the large feed chute
3. Before removing the bolts that mount the blades place paper towels in the area opening between the drum and the drum housing. This will prevent bolts from dropping into the drum housing.
4. Remove the first 4 bolts.
5. **Before removing the last bolt be sure to support the blade from sliding down into the drum.** More paper towels or a shop towel does a good job.
6. Remove the blade, reverse it to the new sharp edge and reinstall it. Use only DK2 POWER OEM blades.
7. Use Loctite on the bolt threads when replacing bolts.
8. Use the supplied T-Handle tool to remove and replace bolts
9. Wear protective gloves, the blades are very sharp.
10. Remove the paper towels, any paper left in the chipper will be cut up on the next running operation.





No.	DESCRIPTION	No.	DESCRIPTION
1	feed hopper	41	pin \varnothing 4.0X40
2	outlet hopper	42	boltM10*80
3	support foot	43	washer \varnothing 10* \varnothing 22*2.2
4	tow bar connecting part	44	rubber
5	wheel axle	45	boltM8*70
6	crush house	46	buckle
7	tool box cover	47	chain
8	M8 locknut	48	boltM10*90
9	\varnothing 8lockwasher	49	tow bar
10	washer \varnothing 8* \varnothing 16*1.6	50	hitch trailer
11	plate for protection sheet	51	Square latch
12	protection sheet	52	M12knob
13	hexagon headed boltM8X25	53	blade gap adjusting plate
14	key switch	54	feeding helper plate
15	pipe plug	55	engine wire
16	wire	56	engine plate
17	belt	57	key
18	Spacer sleeve \varnothing 8.5* \varnothing 14*40.7	58	Spacer sleeve \varnothing 26* \varnothing 35*15
19	Belt cover accessory plate	59	engine
20	bolt5/16-24-2-1/2	60	knob
21	engine pulley	61	outlet hopper adjusting plate
22	washer \varnothing 10* \varnothing 44*5.0	62	upper part of outlet hopper
23	bolt3/8-24UNF-1-1/2	63	bolt M6*16
24	belt cover	64	\varnothing 6lockwasher
25	boltM8X20	65	clip
26	boltM8X25	66	bearing cap
27	washer \varnothing 8.5* \varnothing 40*3.0	67	B shaft ring \varnothing 30
28	rotor pulley	68	pin \varnothing 10
29	M10locknut	69	pin \varnothing 3X20
30	\varnothing 10lockwasher	70	boltM4*16
31	Spacer sleeve \varnothing 8.5* \varnothing 30*24.5	71	clip
32		72	washer \varnothing 4* \varnothing 9*1.0
33	Mounted Bearings	73	\varnothing 4lockwasher
34	steel plate for Mounted Bearing 71clip	74	M4locknut
35	rotor	75	Bolt M12X55
36	blade	76	Bolt M12X40
37	blade bolt	77	washer \varnothing 13.5* \varnothing 24*2.5
38	Hexagonal slotted thin nutM24*1.5	78	lockwasher \varnothing 12
39	washer \varnothing 25* \varnothing 47.5*3.0	79	M12 locknut
40	DOT Tire		

OPERATION – BEFORE TURNING KEY AND PULL STARTING ENGINE

CLEAR AREA OF ALL PEOPLE AND PROPERTY THAT COULD BE DAMAGED. THINK SAFETY. CHIPS ARE FLYING PROJECTILES AND CAN CAUSE INJURY. CHECK BOTH CHUTES AND MAKE SURE THEY ARE CLOSED AND LOCKED. WEAR SAFETY GLASSES, HEARING PROTECTION, AND GLOVES

IF YOUR UNIT WILL NOT START –

1. CHECK ALL WHITE WIRE CONNECTIONS
 2. CHECK KEY SWITCH IS TURNED TO THE ON – RIGHT HAND POSITION.
 3. ALSO UNPLUG THE WHITE CONNECTOR FROM KEY SWITCH AND TRY IT.
- DO NOT WEAR LOOSE FITTING CLOTHES THAT COULD GET STUCK IN THE CHIPPER
 - ONLY CHIP WOOD, NO METAL OR PLASTIC.
 - CHILDREN SHOULD NOT RUN THIS EQUIPMENT
 - STAY ALERT OF YOUR SURROUNDING AND PERSONS THAT COULD APEAR IN THE CHIP PATH WHILE YOU ARE WORKING.
 - FEED LARGE DIA TREES SLOWLY INTO THE CUTTING DRUM ALLOWING THE DRUM TO REGAIN RPM AND CUTTING SPEED BETWEEN CUTS.

RUN ALL CONTENTS IN THE HOPPER THROUGH THE MACHINE BEFORE SHUTTING ENGINE OFF TO PREVENT LOOSE WOOD FROM LOGING BETWEEN BLADES JAMMING DRUM BEFORE YOUR NEXT ENGINE START UP. REMOVE SMALL SIDE COVER WITH 2 NUTS AND TURN DRUM COUNTERCLOCKWISE TO FREE UP WOOD STUCK IN THE BLADE.

NEVER RUN CHIPPER WITH CHUTES OPEN. RUNNING A MACHINE WITH CHUTES OPEN CAN CAUSE INJURY OR DEATH.

READ AND OBEY ALL WARNING LABELS ON THIS MACHINE.



PLEASE DO NOT RETURN TO THE STORE

CALL US AT 702-331-5353 FOR OEM WARRANTY PARTS AND QUESTIONS

WHAT IS COVERED – 3YR ENGINE AND 1 YEAR COMMERCIAL WARRANTY INCLUDED

Detail K2 Inc. warrants to the original purchaser that model OPC506 will be free and clear of manufacturing defects in workmanship and materials under normal use and service for a period of one (1) year from the date of the original purchase. If within one (1) year from the original date of purchase this OPC506 fails due to defect in material or workmanship, Detail K2 will repair, replace, or supply any covered defective part at our option. DK2 POWER OPC506 is 1-year parts only warranty no labor. Kohler 3 year warranty is PARTS and LABOR.

Upon expiry of one (1) year, Detail K2 will have no further liability related to the product. Detail K2 does not authorize any party, including its authorized distributors or dealers, to offer any other warranty on behalf of Detail K2 Inc.

SERIAL NUMBERS MUST BE REGISTERED ONLINE AT WWW.DK2POWER.COM, WARRANTY NON-TRANSFERABLE.

KOHLER ENGINES – KOHLER CH SERIES ENGINES COMMERCIAL 3 YR PARTS AND LABOR WARRANTY

KOHLER ENGINES – KOHLER SH SERIES ENGINES RESIDENTIAL 2 YR PARTS AND LABOR WARRANTY

see your Kohler manual for specific warranty.

DK2 OPC506– 1-Year parts only, no labor. 3-year commercial Kohler warranty.

THIS WARRANTY DOES NOT COVER OR APPLY TO:

Damage to the product due to misuse, mishandling and abuse

(b) Improper installation, maintenance and storage

(c) Expendable parts such as nuts and bolts, pins and springs, wiring and switch components, hydraulic hoses and fittings, cutting teeth, cutting chains, cutting blades, throttles, belts and tires.

(d) Normal wear and tear

(e) Consequential damage & incidental damages such as damage to persons or property

PROCEDURE FOR OUTDOOR POWER EQUIPMENT WARRANTY

Within the one (1) year warranty period, the purchaser of the product can CALL 702-331-5353 DK2POWER or contact us on www.DK2Power.com. Notify us of the claimed defect and provide proof of original purchase. At this time the validity of the claim will be determined, and if approved replacement parts will be issued. No returned product will be accepted under warranty unless accompanied by an RGA# issued by Detail K2 Inc.

DAMAGED FREIGHT

Damage to your product caused by freight mishandling is NOT covered under warranty. If your freight arrives damaged, REFUSE it. **Inspect your product when it arrives**, otherwise if you accept it, you will be responsible for filing any freight claims with the delivery company. Dk2 warranty excludes damage to product.

RETURNS BEFORE GAS AND OIL

Follow the return policy from the retailer you purchased the equipment from.

RESOLUTION FOR A DEFECTIVE PRODUCT AFTER GAS AND OIL HAS BEEN ADDED.

Call DK2Power at **702-331-5353** in Las Vegas between 8am-4pm M-F Pacific Time.