

DK2

POWER

DK2 USA WEST

4301 S Valley View Blvd,
Suite 10-11, Las Vegas,
Nevada, 89103, United States

DK2 MAIN OFFICE

1080 Clay Avenue
Unit 2, Burlington, Ontario
L7L 0A1, Canada

DK2 USA EAST

6245 Industrial Parkway
Whitehouse, Ohio,
43571, United States

TEL: 888 277.6960 WWW.DK2POWER.COM



ABOUT US

DK2 is a leading manufacturer of power products and automotive accessory items. Our line has expanded into 5 categories of products; Snow Plows, Trailers, Winches, Auto Accessories, and **Outdoor Power Products**.

We believe in providing quality first and are focused on delivering our products to our customers on time and in accordance with their ever changing needs. We believe that our business can – and should – have a positive impact on the communities we serve.

With Distribution Centres in both Canada and the US, we service a wide range of wholesale and retail channels by maintaining our commitment of providing products that are designed and created with high ethical standards.

LIMITED 1 YEAR WARRANTY

WHAT IS COVERED

DK2 Inc. warrants to the original purchaser of any DK2 product that it will be free and clear of manufacturing defects in workmanship and materials under normal use and service for a period of one (1) year from the date of the original purchase.

If within one (1) year from the original date of purchase this product fails due to defect in material or workmanship, Detail K2 will repair, replace, or supply any defective part at our option for DK2 trailer products. DK2 POWER outdoor power equipment is 1-year parts only warranty no labor.

Upon expiry of one (1) year, Detail K2 will have no further liability related to the product. Detail K2 does not authorize any party, including its authorized distributors or dealers, to offer any other warranty on behalf of Detail K2 Inc.

KOHLER ENGINES – KOHLER CH Series engines commercial 3 yr parts and labor warranty
KOHLER ENGINES – KOHLER SH series engines residential 2 yr parts and labor warranty
DIESEL TRACTORS – Chassis component parts only, no labor, ENGINES – 1 YR KOHLER WARRANTY
3PT EQUIPMENT – 1-YEAR parts only, Gearbox drive unit 3-year warranty parts only.
DK2 POWER OUTDOOR EQUIPMENT – 1-Year parts only, no labor. 3-year commercial Kohler warranty. (see your Kohler manual for specific warranty.)

THIS WARRANTY DOES NOT COVER OR APPLY TO:

- (a) Damage to the product due to misuse, mishandling and abuse
- (b) Improper installation, maintenance and storage
- (c) Expendable parts such as nuts & bolts, pins & springs, wiring & switch components, hydraulic hoses & fittings, cutting teeth, cutting chains, cutting blades, throttles, belts, tires.
- (d) Normal wear and tear
- (e) Consequential damage & incidental damages such as damage to persons or property

PROCEDURE FOR OBTAINING A RETURN AUTHORIZATION

Within the one (1) year warranty period, the purchaser of the product must notify DK2 of the claimed defect and provide proof of original purchase. At this time the validity of the claim will be determined, and if approved replacement parts will be issued. A Return Goods Authorization Number (RGA) will be issued if approved for DK2 Automotive products. No returned product will be accepted under warranty unless accompanied by an RGA# issued by Detail K2 Inc.

RESOLUTION FOR A DEFECTIVE PRODUCT

DK2 POWER – Tractors, Chippers, Stump Grinders, Log Splitters, 3pt, and Outdoor Power Equipment. Call DK2 at 702-331-5353 in Las Vegas between 8am-4pm M-F Pacific Time (PT)





12 x 3.5" ATV TOWABLE STUMP GRINDER

PAGE: 4



**3" ATV TOWABLE
CHIPPER SHREDDER**

PAGE: 5



**4" CYCLONIC DIRECT DRIVE TOWABLE
CHIPPER SHREDDER**

PAGE: 6



**5" TOWABLE
CHIPPER**

PAGE: 7



**5" TOWABLE AUTO FEED
Electric Start CHIPPER**

PAGE: 8



**6" CYCLONIC DIRECT DRIVE
CHIPPER SHREDDER**

PAGE: 9



**40 TON KINETIC
1 SEC RETURN LOG SPLITTER**

PAGE: 10



**1100LB ELECTRIC
DUMP CART**

PAGE: 11



**18" COMMERCIAL
TRENCHER**

PAGE: 12



**24" COMMERCIAL
TRENCHER**

PAGE: 13



**16HP DIESEL COMPACT
TRACTOR**

PAGE: 14



**12" COMMERCIAL
 GRADE STUMP
 GRINDER**



Item Number: OPG777
UPC: 826518005524

Powered by 14HP KOHLER® Command PRO commercial engine. Mounted on a Heavy Duty welded 2x2 Steel, solid frame structurally engineered for endurance performance. Extreme duty 2x2 axle with dual locking hitch pins for trouble free wheel brakes and transport over rough terrain. Direct Power Drive delivers 3600RPM and 22.7 Gross Torque FT lb to a 12 inch solid steel cutting wheel mounted on premium pillar bearings.

Demolishes stumps with 9 Carbide teeth cutting 3 ½ inches wide per cut. Cuts any diameter stump 12" high and 9 in below ground. Designed and manufactured for Strength, Durability and Performance. Features Key shut-off, locking throttle, drop stand, solid bar lift handles.

Free towbar and free extra set of 9 carbide teeth.

SPECIFICATION

Engine Model	KOHLER CH440
Engine	Command PRO Commercial
Rated Power[Kw(HP)]	14 HP
Rated Speed(RPM)	3600
Tires	ATV Locking Heavy Duty Axles
Wheelbase	32"
Stump Dia/Height Max	Any Diameter 12 Inches High
Cutting Blades	9 Dual Carbide Cast Mounted Cutters
Cutting Width	3-½" Cutting Path
Gearbox	Direct Drive Dual Belts
Warranty	3YR Engine - 1YR Chassis
Assembled Dimensions	91 x 32 x 52"
Weight	234 lb
Shipping Crate Dims	42 x 23 x 25" - 275lb
Container Qty	158



ATV Tires DUAL Locking - Off Road only



9 Carbide Cutting Head - Direct Drive



Adjustable Bow Handle With Heavy Duty Frame Mounting



FREE Extra Set Of 9 Carbide Teeth



**ATV TOWABLE
 3" CHIPPER
 SHREDDER**



Item Number: OPC503
UPC: 826518005487

ATV towable 3 inch 4000RPM Direct Drive combo chipper shredder. The dual blade, centrifugal force deteriorates trees, branches, leaves, and garden composting.

Additional premium features include extra large feed chutes, drop stand and handy removable tow bar, locking wheels, removable key shutoff, 4 Stage CYCLONIC Filter System, a 7HP KOHLER CH270 Command PRO Engine and a 3YR Commercial warranty .

SPECIFICATION

Engine Model	KOHLER CH270
Engine	Command PRO Commercial
Rated Power[Kw(HP)]	7HP
Rated Speed(RPM)	4000
Tires	ATV Locking
Wheelbase	28"
Tree Diameter	3"
Cutting Blades	Dual Carbide
Chipper Shredder	Leaves Brush Garden Compost
Gearbox	Direct Drive
Expulsion Chute	Steel Adjustable
Warranty	3YR Engine - 1YR Chassis
Assembled Dimensions	63 x 32 x 43"
Weight	170 lb
Shipping Crate Dims	33 x 29 x 44" 198 lb
Container Qty	84



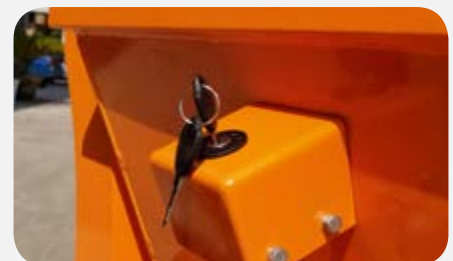
ATV Tires-locking - Off Road only



1 7/8" Removable Tow Bar



Large Feed Chute



Lock Out Safety Keys



**5" AUTO FEED
 CHIPPER
 SHREDDER**

Item Number: OPC505AE

UPC: 827518006702

5" Electric Start chipper self contained auto feed system with hydraulic roller speeds up to 600 rpm.

Self adjusting feed chamber, large feed chute, adjustable chip chute. ATV tires with included tow bar. **Direct drive performance.**

DK2 POWER manufactures performance equipment, driven by KOHLER Command Pro, CH440 14 HP 3 yr commercial warranty.

SPECIFICATION

Engine Model	KOHLER 440
Engine	Command PRO Commercial
Rated Power (HP)	14 HP
Rated Speed(RPM)	3600
Tires	All Terrain on/off road D.O.T
Tree Diameter	5"
Cutting Blades	Auto Feed
Expulsion Chute	Steel Adjustable
Warranty	3YR Engine - 1YR Chassis
Assembled Dimensions	91 x 40 x 61"
Weight	638 lb
Shipping Crate Dims	63 x 35 x 49" - 727 lb
Container Qty	28



All Terrain On/Off road D.O.T. rated



1-7/8 inch removable tow bar.



Adjustable feed speed controls.



Kohler 14 HP CH440 Engine - 3 Year Warranty



**6" CYCLONIC
 DIRECT DRIVE
 CHIPPER
 SHREDDER**



CYCLONIC CUTTERS



3600 RPM CYCLONIC Chippers. Direct Drive, Dual Swing Chutes for quick drum access.

6 inch chipping capacity, reversible dual edge high speed cutting blades. Auto Adjusting CYCLONIC drum chamber deteriorates trees and brush up to 6.25 inches in diameter all from one feed chute. Large quick open hoppers, 59" truck bed height chip chute with adjustable cast iron rotating hood, easy drop stand, removable tow bar, 2 inch hitch.

Premium built-in tool box, Key shutoff with lock out safety switch. Extended 48 inch safety stability axle with DOT tires. Safety kit includes, tools, glasses, ear protection and gloves. Integrated chute handles, powder coated for durability.

SPECIFICATION

Engine Model	KOHLER CH440
Engine	14HP Command PRO Commercial
Rated Power[Kw(HP)]	14 HP
Rated Speed(RPM)	3600
Tires	D.O.T. 25 MPH - Maximum
Wheelbase	47"
Tree Diameter	6.25"
Cutting Blades	Dual Reversible Double Edge Swords
Chipper Shredder	Auto Adjusting 6" To 1/8" Materials
Gearbox	Dual Direct Drive
Expulsion Chute	Cast Iron Adjustable 180° 59" Pickup Bed Height
Warranty	3YR Engine - 1YR Chassis
Assembled	102 x 47 x 59"
Dimensions Weight	375 lb
Shipping Crate Dims	44 x 25 x 44" - 452 lb
Container Qty	72

**Item Number: OPC506
 UPC: 826518005517**



25MPH D.O.T. Tires



2 inch removable tow bar - D.O.T. Road Legal



Extended Axle / Dual Swing Chutes / Tool Box



Lock Out Safety Keys



**40 TON KINETIC
 1 SEC RETURN
 LOG SPLITTER**



**Item Number: OPS240
 UPC: 826518005746**

40 Ton Kinetic Ultimate speed 1 sec Commercial Grade Log Splitter.

KOHLER Command PRO 4000 RPM CH270 3YR warranty engine. Oversized reinforced steel work table, safety lockout, Clam shell quick access body. Extended stability axle with ATV tires. 2 inch ball hitch, 22 inch long logs.

This machine gets it done, quality manufactured for top performance. Auto retraction bearing guided ram. This powerful splitter performs during 40 ton force cycles.

Split safety, ear protection, safety glasses, work gloves, tools and oil bottle included.

SPECIFICATION

Engine Model	KOHLER CH240
Engine	Command PRO Commercial
Rated Power[Kw(HP)]	7HP
Rated Speed(RPM) Tires	4000
Tires	ATV Locking
Max Log Length	22"
Warranty	3YR Engine - 1YR Chassis
Assembled Dimensions	120 x 37 x 44"
Weight	573 lb
Shipping Crate Dims	71 x 27 x 23" - 607 lb
Container Qty	68
Tow Bar	2" Ball
Log Rails	Slide Reload
Wedge	8" Expansive
Cycle Time	1 Second
Ram Speed	½ Second Deployment



8" Expansive solid steel wedge



Oversize steel work table



ATV Tires- Locking



2 inch ball hitch



**1100LB
ELECTRIC
DUMP CART**

Item Number: OPD811

UPC: 826518005722

DESCRIPTION

All terrain BIG DUMP moves 1100 LBS with self drive electric power. Run your Big Dump 6 hours on one charge.

Hydraulic electric lift cylinder tip bucket to 90 degrees vertical to clean your load. Throttle bar speed control with articulated floating rear wheels keep your load level and steady.

At 6 MPH quickly move about your job site. Dual front wheel drive climbs over rough terrain with ease.

SPECIFICATION

Max Capacity	1100 lb
Max Speed	6 MPH
Charge Time	5 hours
Run Time	6 hours
Wheels	All terrain
Warranty	1YR Chassis
Assembled Dimensions	85 x 46 x 42"
Weight	320 lb
Shipping Crate Dims	54 x 32 x 35" 508 lb
Container Qty	69



1000lb Max Capacity



All terrain tires



Max speed 6 mph



Vertical dump 90 degrees



DK2 POWER
KOHLER. Engines



18" COMMERCIAL TRENCHER

Item Number: OPT118

UPC: 826518005586

Direct Chain Drive Trencher. High pressure sintered carbide teeth. 5 depth positions, dual locking wheels for digging in reverse. 3/8 plow plates with quick change teeth. Adjustable handle, Keyed safety lock out, 6 inch direct drive auger. Heavy gauge steel construction.

4000 RPM direct drive, 400 RPM tri-cut teeth chain drive.
 200FT per hour dig rate.

SPECIFICATION

Engine Model	KOHLER CH270
Engine	Command PRO Commercial
Rated Power[Kw(HP)]	7HP 208CC 10.5 FT lb torque @ 4000RPM
Rated Speed(RPM)	4000
Chain Speed	1800 FT Per Minute
Chain Dimension	63"
Trench	4" x 18"
Cutting Teeth	21 Carbide Alloy High Pressure Teeth: 400 RPM
Wheels	Dual Auto Lock In Reverse Dig
Gearbox	Dual Belt Chain Drive Auger
Auger	Side Offload Direct Drive 3YR
Warranty	Engine - 1YR Chassis
Assembled Dimensions	71 x 36 x 48"
Weight	320 lb
Shipping Crate Dims	41 x 30 x 34" 374 lb
Container Qty	99



Tri-Cut High Carbide Teeth



Trolley Wheel



Lock out safety keys - Locking Throttle



Auger guard





DK2 POWER
KOHLER Engines



24" COMMERCIAL TRENCHER

Item Number: OPT124
UPC: 826518005463

Direct Chain Drive Trencher. High pressure sintered carbide teeth. 5 depth positions, dual locking wheels for digging in reverse. 3/8 plow plates with quick change teeth. Adjustable handle, Keyed safety lock out, 6 inch direct drive auger. Heavy gauge steel construction.

3600 RPM direct drive, 400 RPM tri-cut teeth chain drive. 200FT per hour dig rate.

SPECIFICATION

Engine Model	KOHLER CH440
Engine	Command PRO Commercial
Rated Power[Kw(HP)]	14HP 429CC 22.7 FT lb torque @ 3600RPM
Rated Speed(RPM)	3600
Chain Speed	1800 FT Per Minute
Chain Dimension	79"
Trench	4 x 24
Cutting Teeth	27 Carbide Alloy High Pressure Teeth. 400 RPM
Wheels	Dual Auto Lock In Reverse Dig
Gearbox	Dual Belt Chain Drive Auger
Auger	Side Offload Direct Drive 3YR
Warranty	Engine - 1YR Chassis
Assembled Dimensions	85 x 36 x 48"
Weight	375 lb
Shipping Crate Dims	44 x 31 x 38" 474 lb
Container Qty	60



Tri-Cut High Carbide Teeth



Trolley Wheel



Lock out safety keys - Locking Throttle



Auger guard



OPF316

DESCRIPTION

This unit sports plenty of torque at 3900 force (N). The quick response 540 rpm to 1000 rpm PTO drives 4 and 5 foot CAT1 implements with ease. Turf tires make this a versatile tractor for lawn, garden, and field work.

It has a Single-function clutch, (3+1)×2 gearbox delivers triple speed to P.T.O. Power steering for easy handling, Safe start switch, Enclosed metal hood, Dual head lamps, Combination meter, Absorber comfort seat with safety belt, Disc brakes, Roll over bar, Sun Canopy, Turf tires, Front weights, rear wheel weights and Top Link for 3pt implements all included. Dual hydraulic rear ports to drive log splitters and lift trailers. EPA approved Kohler Diesel engine delivers quality performance. National service provided by Kohler service centers.

A REMARKABLE tractor that delivers both Kohler PERFORMANCE and DK2 Power VALUE. Ships factory assembled direct to your home, wheels and sun canopy easy assembly required. (Loader sold Separately)

SPECIFICATION

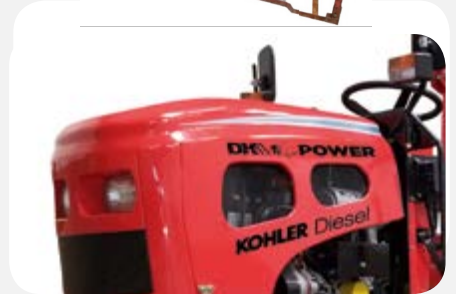
Engine Model	KOHLER KDW1003 Diesel
Engine	ED2A36E0-1
Rated Power[Kw(HP)]	11.8/16
Rated Speed(RPM)	2400
Tires	Front :5" x 12" Rear :7.5" X 16"
Wheelbase	52.3"
Front-wheel Tread	31.1"
Rear-wheel Tread	35"
Rated Traction Force(N)	3500
PTO Speed(RPM)	540/1000 Double Speed
Speed m/h	0.82 - 8.65
Gearbox Few Stalls	(3+1)×2
Ground Clearance	10.2"
Assembled Dimensions	96 x 42 x 84"
Min. Use Weight	1622 lb
Shipping Crate Dims (2)	87 x 47 x 43" & 59 x 43 x 30" 1477 lb & 595 lb = Total 2072lbs



16HP DIESEL SUB COMPACT TRACTOR – CRATED

Item Number: OPF316C

UPC: 826518005647



All Metal Hood Construction



Turf Tires



Power Steering





**COMMERCIAL GRADE
PERFORMANCE**





DK2 POWER

DK2 USA WEST
4301 S Valley View Blvd,
Suite 10-11, Las Vegas,
Nevada, 89103, United States

DK2 HEAD OFFICE
1080 Clay Avenue,
Unit 2, Burlington, Ontario,
L7L 0A1, Canada

DK2 USA EAST
6245 Industrial Parkway
Whitehouse, Ohio,
43571, United States

TEL: 888 277.6960 WWW.DK2POWER.COM

JBI-
5/2019