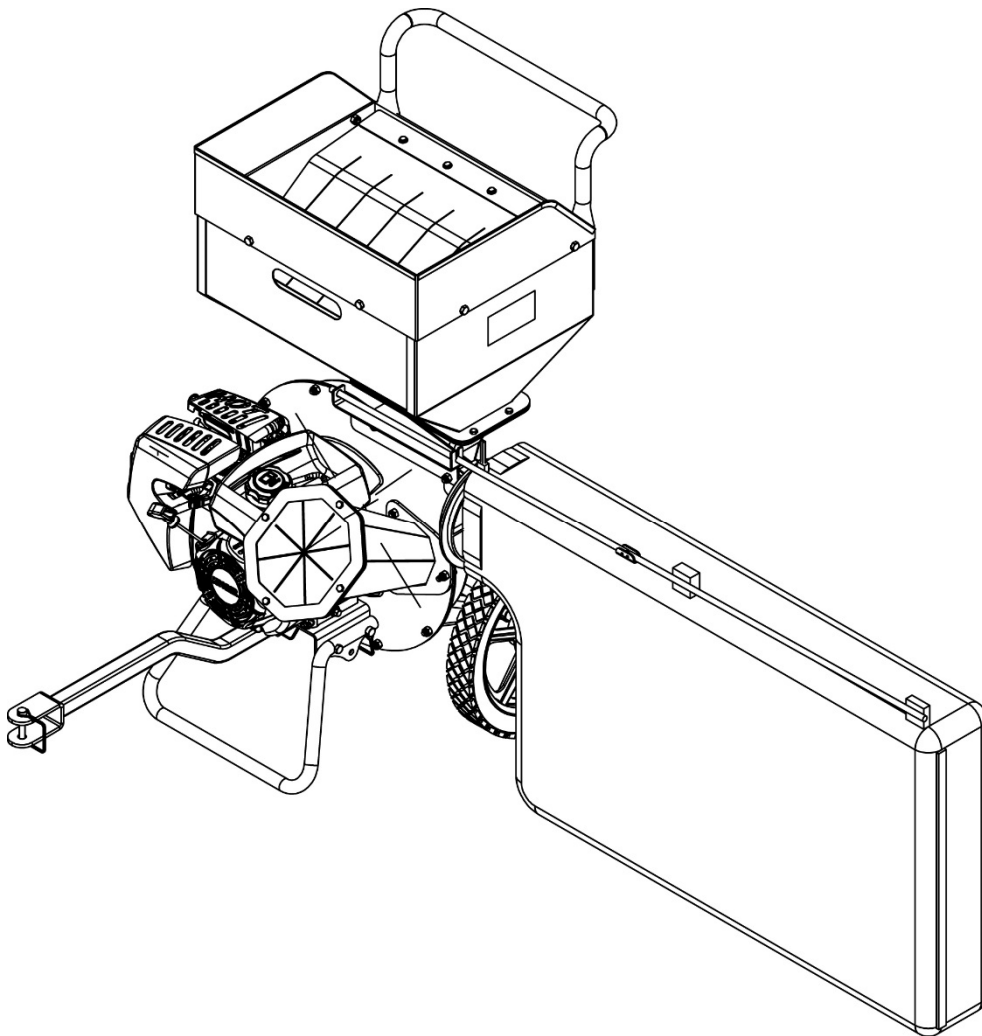


# CHIPPER SHREDDER WITH METAL HOPPER

## Owner's Manual *ASSEMBLY AND OPERATING INSTRUCTIONS*



This safety alert symbol identifies important safety messages in this manual. Failure to understand and follow safety, assembly and operating instructions could result in serious injury or death. Save this manual for future reference.

# Table of Contents

General Safety Warnings .....	3
Specific Safety Rules and Precautions .....	4
Controls and Features Identification.....	6
Components and Hardware Contents .....	7
Assembly Instructions .....	8
Operating Instructions .....	11
Inspection, Maintenance and Cleaning .....	13
Troubleshooting.....	14
Specifications .....	15
Drawing and Parts List .....	16
Limited Warranty .....	19



## General Warnings



***WARNING: Read and understand all instructions and safety information in this manual before assembling or operating the chipper/shredder. Failure to understand and follow all instructions and safety information may result in serious injury or death. Persons who have not read the manual should never operate the chipper/shredder. A chipper/shredder can be dangerous when assembled and/or used improperly. Do not operate the chipper/shredder if you have any questions concerning safe operation. Please call the technical support department at 1-888-723-6534 for answers to any questions.***



***WARNING: This product can expose you to chemicals including lead and lead compounds which are known to the State of California to cause cancer and birth defects or other reproductive harm. For more information, go to [www.P65Warnings.ca.gov](http://www.P65Warnings.ca.gov).***

### **Important General Safety Instructions**

- 1. Keep the work area clean and use bright lighting.** Always keep the work area free of debris. Ensure there is adequate lighting before operating.
- 2. Do not operate the chipper/shredder in flammable and/or explosive environments, including the presence of flammable liquids, gases, or dust.** The chipper/shredder can create sparks which can ignite any flammable materials.
- 3. Keep all children, bystanders and pets away from the machine while operating the chipper/shredder.** To minimize distractions and promote safe operation, the operator alone should be near the chipper/shredder during use.
- 4. Stay alert.** Never operate the chipper/shredder when under the influence of drugs, alcohol or medication or when otherwise not alert enough to operate the machine with careful attention. Always exercise caution and beware that even a moment of inattention while operating the chipper/shredder may result in serious personal injury.
- 5. Dress for safety.** Do not wear loose clothing or jewelry. Keep hair, clothing, gloves, and anything attached to your body away from moving parts as they may get caught in the chipper/shredder.
- 6. Beware of unintentional ignition/starting.** Always check that the engine ignition is in the "OFF" position. Be sure the chipper/shredder is off before moving the chipper/shredder, performing any service and maintenance, and before cleaning the machine.
- 7. Remove any adjustment keys and wrenches before operating the chipper/shredder.** Leaving wrenches or keys attached to any rotating parts of the chipper/shredder during operation creates the risk of personal injury.
- 8. Do not reach over the chipper/shredder and/or operate it from any positions that could jeopardize balance.** Maintain proper footing and balance at all times when using the chipper/shredder.
- 9. Use safety equipment.** Always wear ANSI-approved safety impact goggles, hearing protection, heavy-duty work gloves, and a dust mask or respirator when using the chipper/shredder.
- 10. Do not use the chipper/shredder if the "On/Off" switch malfunctions and fails to start and stop the machine.** A faulty power switch is potentially dangerous and must be replaced.
- 11. Store the chipper/shredder out of reach of children and other untrained persons.** Adults without proper instruction and operational knowledge should never use the chipper/shredder.
- 12. Maintain the chipper/shredder by always performing all recommended maintenance procedures.** Proper maintenance extends equipment life and minimizes malfunctions. Do not use the chipper/shredder if it is damaged, in poor mechanical condition or in need of repairs.
- 13. Check for any misaligned or bound moving parts, broken parts, and any other poor mechanical condition potentially affecting the chipper/shredder's operation.** If parts are damaged, have the

chipper/shredder serviced before using.

- 14. Service must only be performed by qualified repair personnel.** Service or maintenance performed by unqualified personnel could result in damage to the chipper/shredder and may create a risk of injury.
- 15. When servicing the chipper/shredder, use only identical replacement parts.** Follow the replacement instructions in the "Inspection, Maintenance and Cleaning" section of this manual. Using unauthorized parts and/or failing to follow maintenance instructions may void the chipper/shredder's warranty.

## Specific Safety Rules and Precautions

**NOTE: Failure to put engine oil in the engine's crankcase before the chipper/shredder's first use voids the warranty. Before each use, check the oil level. Never run the engine with low oil levels or no engine oil. Running the engine with low oil levels or with no oil will permanently damage the chipper/shredder.**

1. For optimal high-altitude operation the engine's carburetor may need to be adjusted by a qualified mechanic.
2. Check that labels and nameplates on the chipper/shredder are in good condition and are readable as they contain important information. Immediately replace any missing or damaged labels or nameplates. Please contact YTL International for replacements by calling 1-888-723-6534.
3. Make sure to operate the chipper/shredder only on a flat, level, sturdy surface capable of supporting the weight of the chipper/shredder and any additional tools and equipment.
4. Industrial applications of the chipper/shredder must adhere to OSHA guidelines.
5. Never stand on the chipper/shredder. Serious personal injury may result if the machine tips over.
6. Never leave the chipper/shredder unattended while it is running. Always turn off the engine when the chipper/shredder is unattended.
7. Be extremely cautious of the rotating blades in the chipper/shredder. Always keep your hands, fingers and all other body parts outside of the chipper or shredder hopper.
8. Never place your hands, fingers, feet or any other body part close to the discharge opening while using the chipper/shredder.
9. Never allow metal, stone, glass or other foreign objects to be fed into the chipper/shredder. Never attempt to operate the chipper/shredder on a slope or slick surface.
10. Always feed branches slowly into the machine. Use a stick to push the tree limbs, leaves, etc. into the feed hopper.
11. Never feed branches larger than 1/2" in diameter into the shredder hopper.
12. Never feed branches larger than 3" in diameter into the chipper hopper.
13. Do not allow processed material to build up in the discharge area. Material build-up may prevent proper discharge and can result in kick back of material through the feed hopper.
14. If the machine becomes clogged, immediately turn the engine off and wait until the chipper/shredder comes to a complete stop. Unplug the spark plug wire from the spark plug. Then clear the machine of the clogged material.
15. Do not allow children and other untrained people to handle or play with the chipper/shredder. Never allow unnecessary people and/or animals in the work area.
16. Avoid applying excessive force to the chipper/shredder. Use the chipper/shredder only for chipping and shredding. Always maintain the safely prescribed speeds and adhere to the capacity limits of the chipper/shredder.
17. Individuals with pacemakers should consult their physician(s) before operating the chipper/shredder. Electromagnetic fields in close proximity to a heart pacemaker can cause pacemaker interference and/or pacemaker failure.

## FIRE AND EXPLOSION PRECAUTIONS

1. Gasoline fuel and fumes are highly flammable and potentially explosive. Always properly store fuel in closed containers and handle fuel with caution. The manufacturer recommends keeping multiple ABC class fire extinguishers nearby when using the chipper/shredder.
2. Always keep the chipper/shredder and all surrounding work areas clean. Diligently check carefully for potentially flammable materials around the chipper/shredder before operation. Any fuel or oil spills must be cleaned up immediately. Please dispose of fluids and cleaning materials properly and in compliance with any and all local, state, or federal codes and regulations. Store all oil rags in a covered metal container with proper ventilation.
3. Never store fuel and/or other flammable materials near the chipper/shredder.
4. Do not smoke, allow sparks, flames or other sources of ignition to be in the immediate vicinity of the chipper/shredder.
5. Keep grounded, conductive objects, such as tools, away from exposed, live electrical parts and connections to avoid sparking or arcing as these events could ignite fumes and/or vapors.
6. Do not refill the fuel tank or oil while the engine is running or hot. Never operate the chipper/shredder if there are potential or known leaks in the fuel system.
7. Only use the fuel and oil recommended by the engine manufacturer in the chipper/shredder.

## MECHANICAL PRECAUTIONS

1. Always make sure the engine's ignition is in its' "OFF" position before performing any service, maintenance or cleaning. Allow the engine to cool completely then remove the spark plug from the engine.
2. Do not alter and/or adjust any part of the chipper/shredder or engine that is assembled and supplied by the manufacturer or distributor.
3. Always follow and complete scheduled engine maintenance.

## CHEMICAL PRECAUTIONS

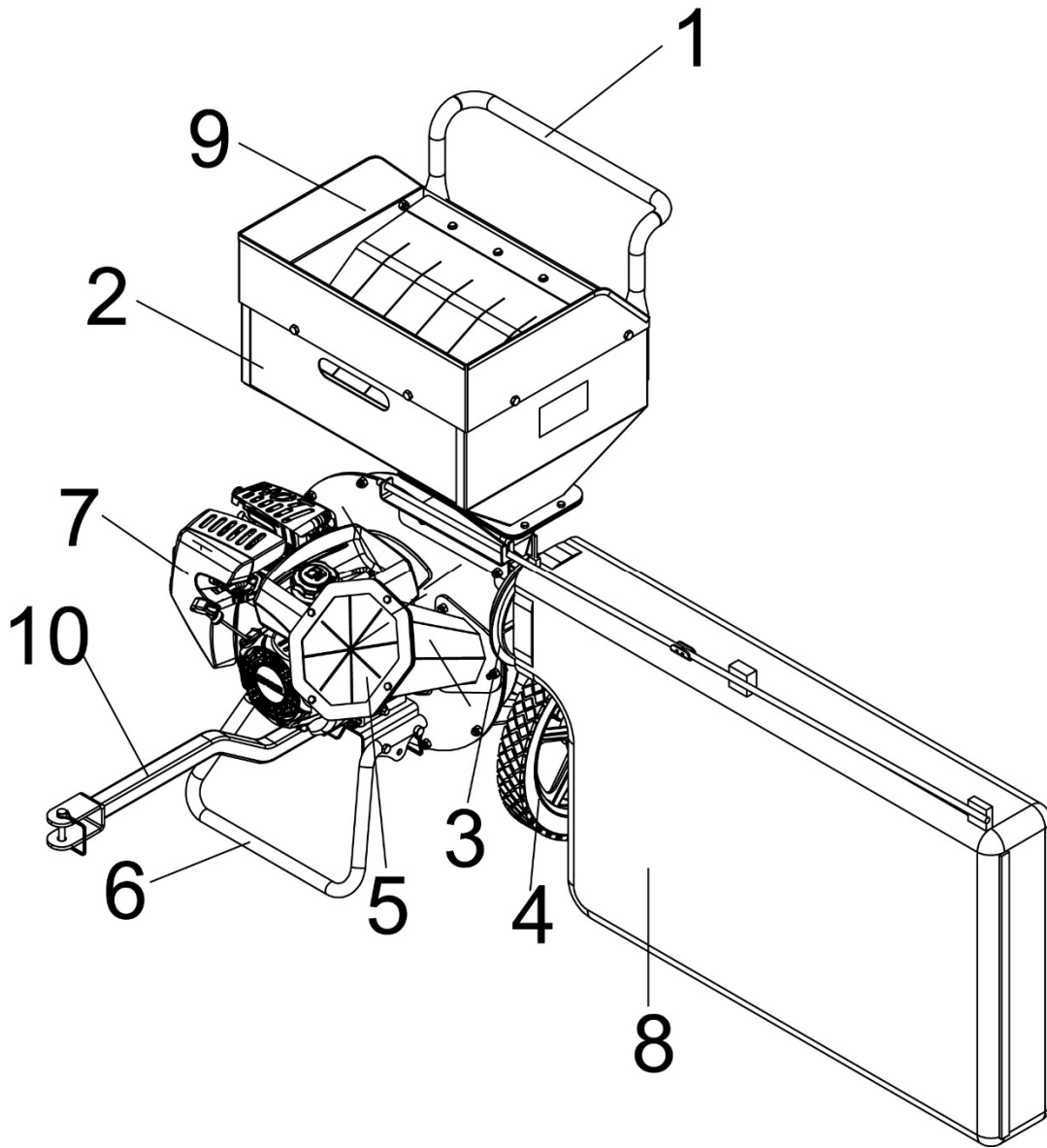
1. Avoid bodily contact with hot fuels, oils and exhaust fumes.
2. Avoid bodily contact with fuels, oils or lubricants used in the engine.
3. If any fuel or chemical is swallowed, seek medical treatment immediately. Do not induce vomiting if fuel is swallowed. If skin contact occurs, immediately wash with soap and water. If eye contact occurs, immediately flush eyes with clean water.
4. **Carbon Monoxide Warning:** The chipper/shredder is designed for outdoor use only. Do not operate the chipper/shredder in closed or poorly ventilated areas. The chipper/shredder's engine produces carbon monoxide, a colorless, odorless, toxic gas that, when inhaled, can cause serious personal injury and/or death. Whenever possible, use a carbon monoxide detector (not included) to detect excessive carbon monoxide fumes in the work area and in the surrounding area.

## NOISE PRECAUTIONS

Exposure to extreme noise levels may cause permanent hearing damage and/or loss. Always wear ANSI-approved hearing protection (headphones) when operating or working around the chipper/shredder.

1. **CAUTION:** The warnings and precautions discussed in this manual do not cover every or all possible dangerous conditions and situations that may arise. Every operator must use common sense and exercise caution as factors which cannot be built into the chipper/shredder and must be supplied by the operator.

## Controls and Features Identification



1. **Handle:** Easy Maneuverability
2. **Shredder Hopper:** 1/2" Maximum Branch/Limb Diameter
3. **Discharge Port:** Cover Cap/End
4. **Wheels:** 14" Flat-free tires
5. **Chipper Chute:** 3" Maximum Branch/Limb Diameter
6. **Support Leg:** Stabilizes the Engine During Operation
7. **Engine:** 6.5HP
8. **Discharge Bag**
9. **Hopper Fence**
10. **Tow Bar**

# Components and Hardware Contents

## Hardware Contents:



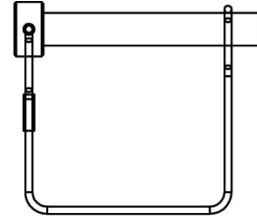
M8x16 Hex Bolt  
6pcs



M8x20 Hex Bolt  
4pcs



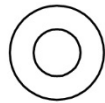
M8x40 Hex Bolt  
2pcs



Lock Pin  
3pcs



M8 Nylon Lock Nut  
12pcs

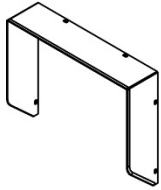


Ø12 Flat Washer  
4pcs

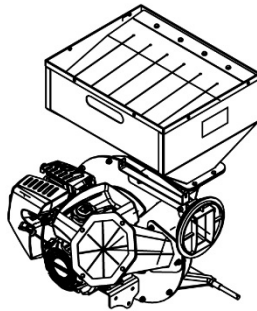


Ø3x30 Cotter Pin  
2pcs

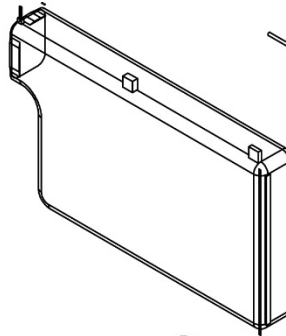
## Components Contents:



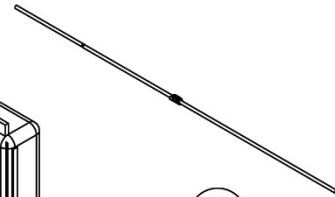
1



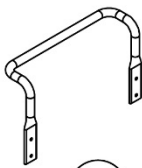
2



3



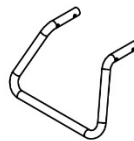
4



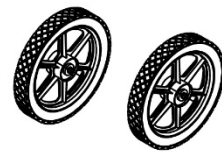
5



6



7



8

1. Hopper Fence 1pc
2. Base Frame Assembly 1pc
3. Discharge Bag 1pc
4. Bag Support Rod 1pc
5. Handle 1pc
6. Tow Bar 1pc
7. Support Leg 1pc
8. 14" Flat Free Tire 2pcs

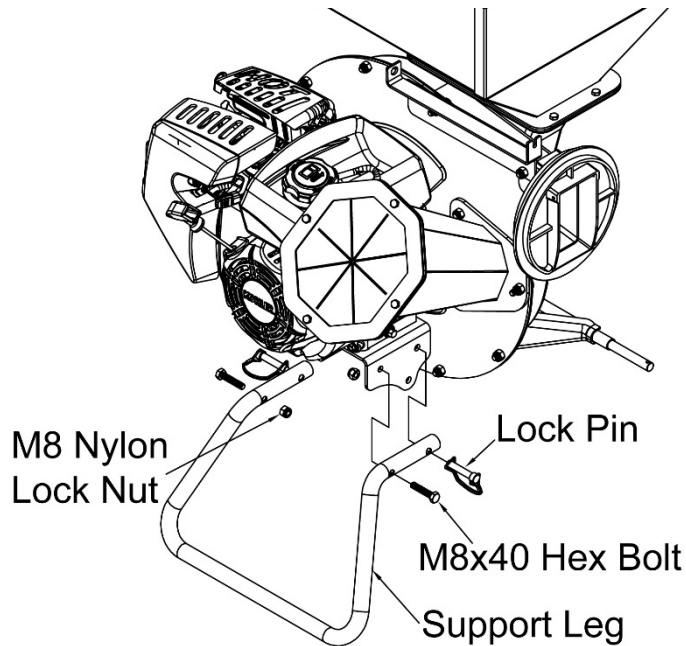
# Assembly Instructions

## TOOLS REQUIRED

- 13mm Wrenches
- Pliers

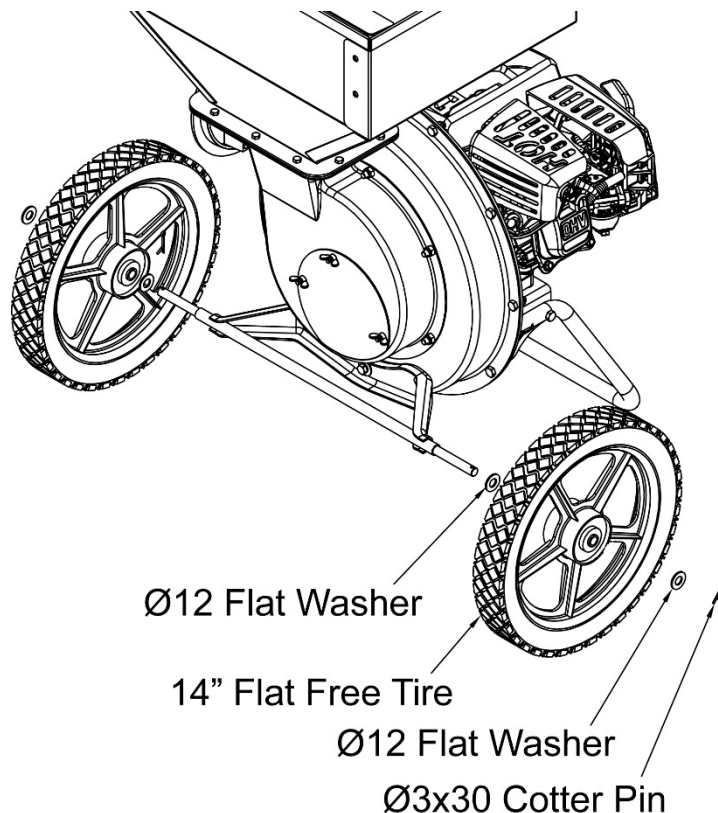
## STEP 1: Attach the Support Leg

1. Attach the support leg to the engine mounting plate with two sets of M8x40 hex bolts and M8 nylon lock nuts using two 13mm wrenches. Lock the support leg in place with two lock pins.



## STEP 2: Attach the Wheels

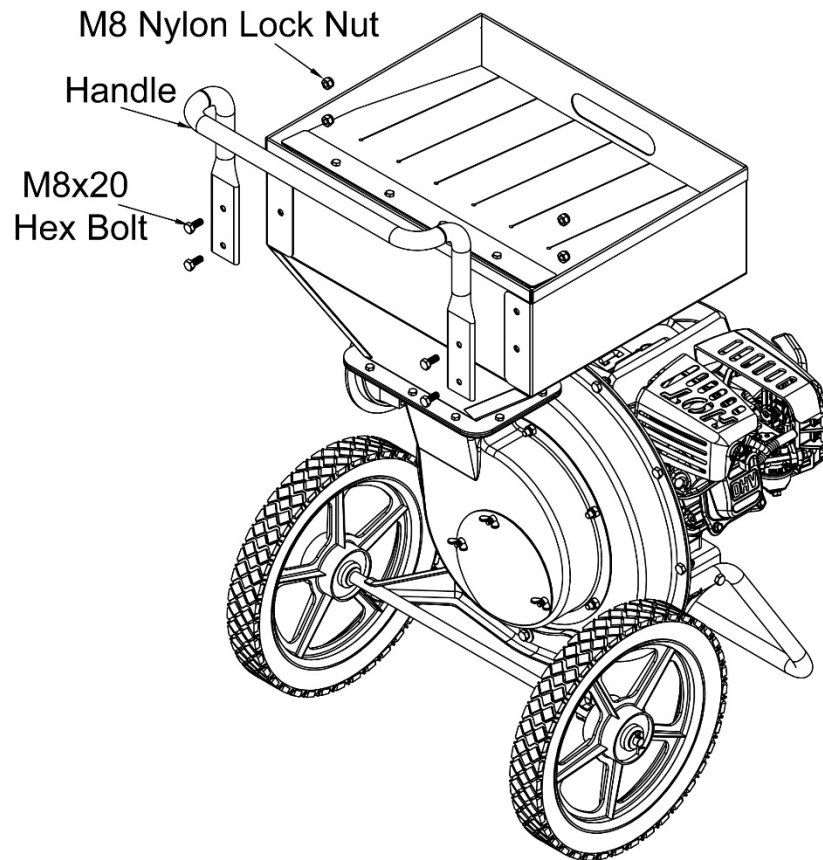
1. Attach the wheel to the wheel axle with a Ø12 flat washer and a Ø3x30 cotter pin. Secure the cotter pin with the pliers. Repeat step 2 to attach the second wheel.





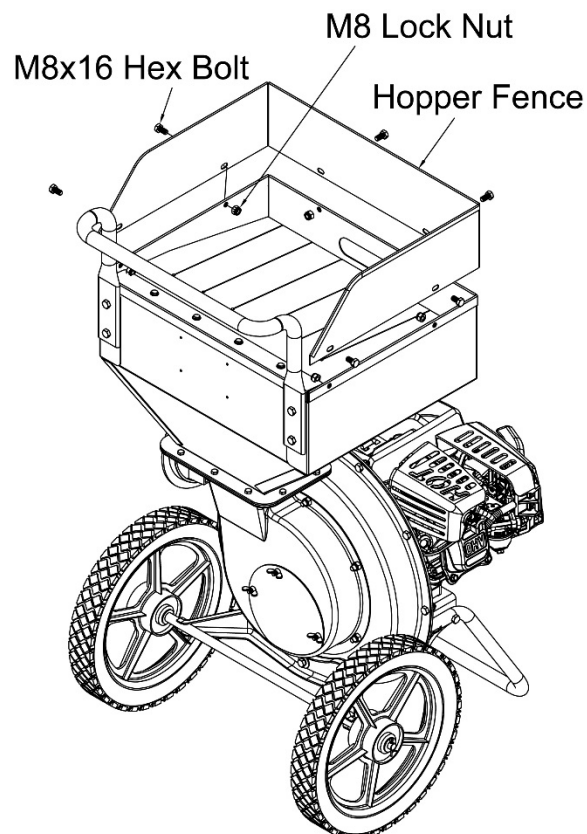
### STEP 3: Attach the Handle

1. Attach the handle to the hopper with four sets of M8x20 hex bolts and M8 nylon lock nuts using two 13mm wrenches.



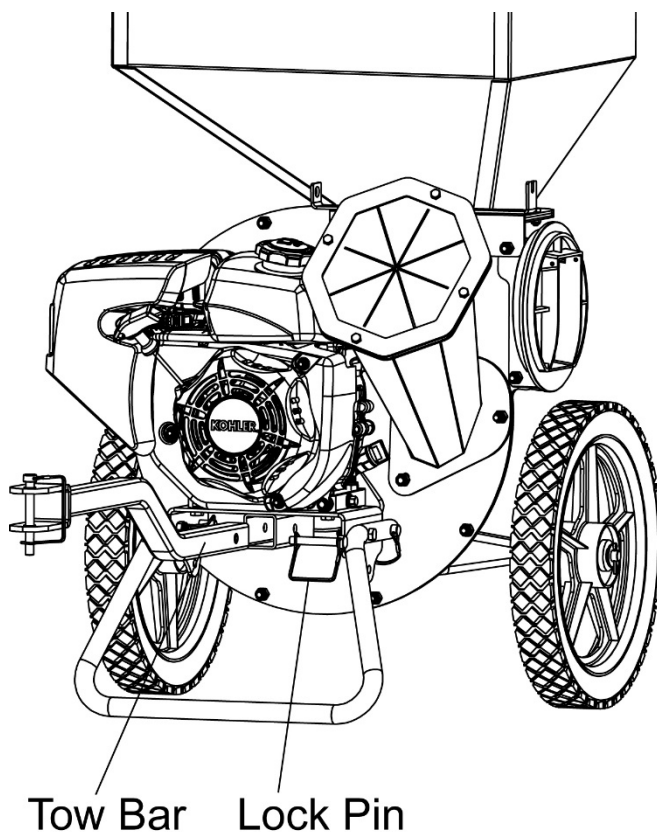
### STEP 4: Attach the Hopper Fence

1. Attach the hopper fence to the hopper with six sets of M8x16 hex bolts and M8 nylon lock nuts using two 13mm wrenches.



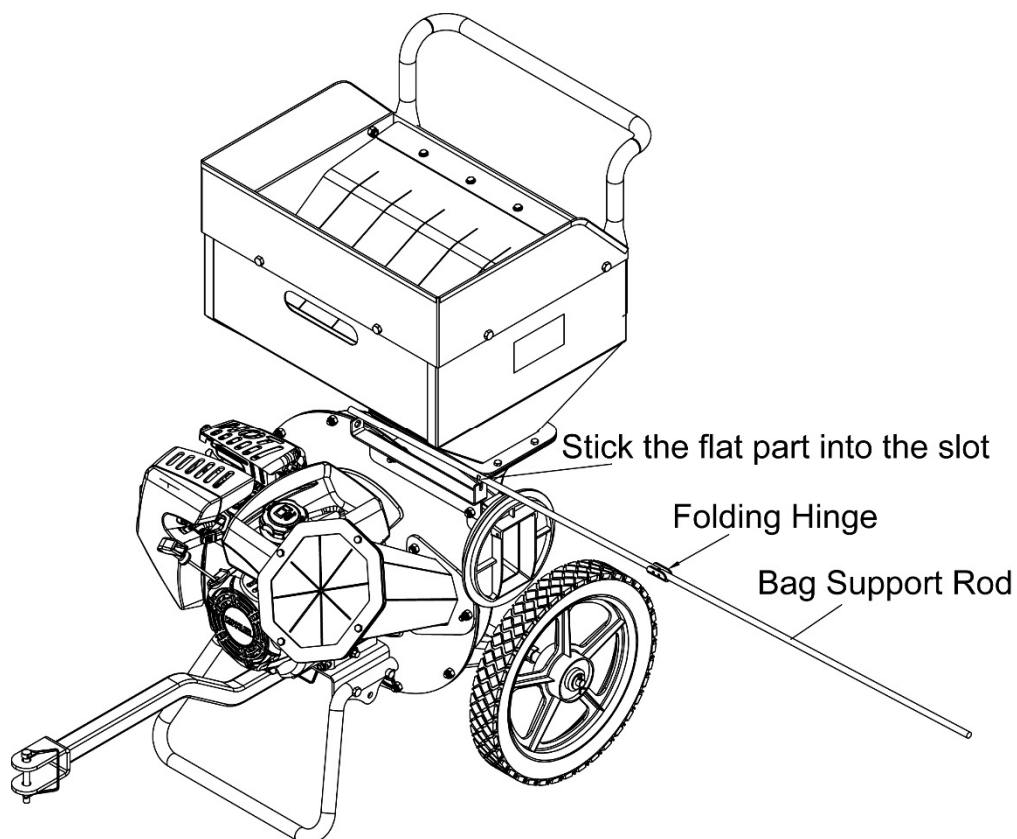
### STEP 5: Attach the Tow Bar

1. Attach the tow bar to the engine mounting plate using a lock pin.



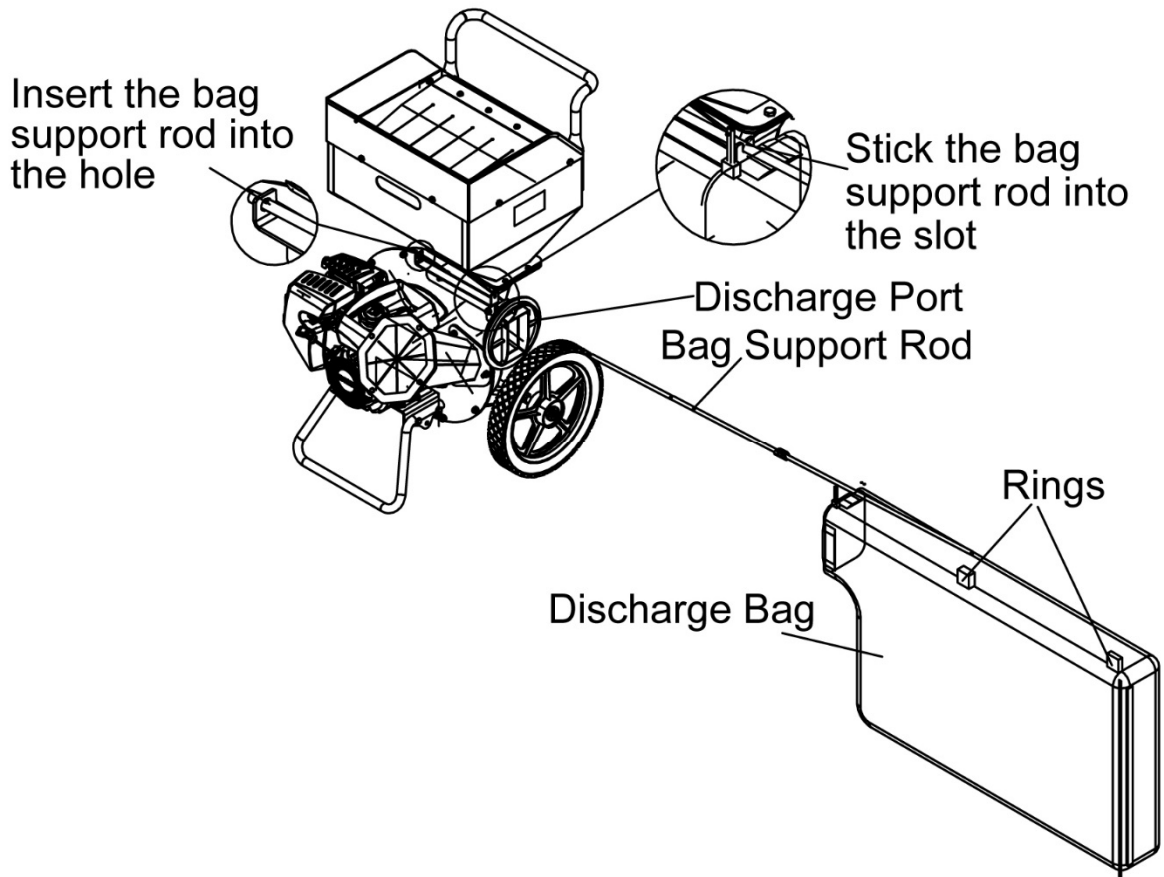
### STEP 6: Attach the Bag Support Rod

1. Attach the bag support rod by opening it at the hinge and sliding it into the bag rack. Stick the flat part of the bag support rod into the slot.



## STEP 7: Attach the Discharge Bag

1. Attach the discharge bag to the discharge port by inserting the bag support rod into the rings on the discharge bag. Secure the opening of the discharge bag to the discharge port by pulling the bag rope to cinch the bag around the port.



## Operating Instructions

### Before Starting

Always use safety equipment when using the chipper/shredder. Remember to wear ANSI-approved safety impact goggles, hearing protection, heavy duty work gloves, and a dust mask or respirator when using the chipper/shredder.

1. Check underneath the chipper/shredder for oil and/or liquid spots indicating an oil or gas leak. If there are any leaks, do not use the chipper/shredder and contact a qualified repair professional for maintenance.
2. Inspect the operating condition of the chipper/shredder. Check that all shields and covers are properly in place. Check for loose screws, misaligned or bound moving parts, cracked or broken parts, and any other condition that may affect the safe operation of the machine. If abnormal noise or vibration occurs, have the problem corrected before further use. Do not use damaged equipment. Only operate the chipper/shredder on a flat, level surface.
3. Check the oil level. Never run the engine with low oil levels and/or without engine oil. Running the engine with low oil levels or without oil will permanently damage the engine.

## Starting the Engine

Turn fuel shut-off valve to the “ON” position.

### Cold Starts

1. Move the engine control lever to the left (“choke”) position.
2. Pull recoil handle out slowly once, then allow the rope to retract normally.
3. Pull recoil handle out slowly, but with force, then allow the rope to retract normally.
4. When the engine starts, gradually move the engine control lever to the right (“fast”) wide open position to increase the engine speed.

### Restarting A Warm Engine

Restarting a warm engine does not normally require the use of the choke.

1. Move the engine control lever to the “RUN” position.  
Pull the recoil handle out slowly, but with force.
2. Allow the rope to retract normally. Repeat pulling and retracting until the engine starts.
3. Adjust the engine control lever speed to “fast” for optimal chipper/shredder operation.

### Idle Speed

Use the “slow” position on the engine control lever to reduce stress on the engine when not chipping or shredding.

Lowering the engine speed to “idle” helps extend the life of the engine, conserves fuel and reduces the noise level admitted from the chipper/shredder.

### Operating Speed

For normal shredding and chipping, set the throttle lever to “fast”.

### Shutting Down

1. To stop the engine at any time, move the engine control lever to the “STOP” position.
2. Close the fuel shut-off valve.

## Shredding and Chipping

1. Without putting your hands into the shredder (on top), slowly drop material into the hopper (one branch at a time). The shredder will automatically pull dropped material further into the machine.



### WARNING

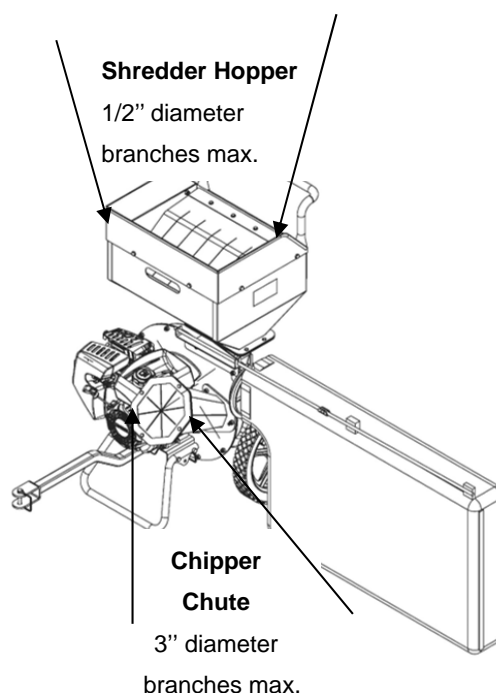
Never use hands to feed material directly into the shredder. If necessary, use a stick to push branches, leaves, etc. into the shredder.

2. The chipper is located on the side of the machine. Carefully feed only one branch at a time into the chipper.
3. Material discharges from the bottom of the chipper/shredder. Stand clear of the discharge areas to avoid contact with shredded debris.
4. Do not allow processed material to build-up in the discharge zone. Built-up material may prevent proper discharge and can result in kickback.
5. If the chipper/shredder jams during use, immediately turn the engine's On/Off switch to the “OFF” position. Allow the chipper/shredder to completely stop before clearing the jam by shifting/pushing the material with a long stick. After the jam is completely cleared the chipper/shredder is safe to resume operation. When finished using the chipper/shredder, turn the engine's On/Off switch to its “OFF” position. Allow the chipper/shredder to completely stop before moving or cleaning.

6. Store the chipper/shredder (with the spark plug removed) in a clean, dry, safe location out of reach of children and unauthorized people.

**IMPORTANT:**

- Do not force material into the chipper/shredder. Branches cannot be larger than 1/2" in diameter for the shredder hopper and cannot be larger than 3" in diameter for the chipper chute.
- Do not attempt to force large branches into the hoppers.
- Do not force the chipper/shredder or attempt to have the machine operate more quickly. Safe operation requires the machine be allowed to draw material at its own pace.



## Inspection, Maintenance and Cleaning

**⚠ WARNING**

The spark plug wire must be disconnected and the On/Off switch must be in the "OFF" position before performing any service, maintenance, or cleaning of the chipper/shredder.

Before using the chipper/shredder, visually inspect the general condition and check for loose screws, misalignment or binding of moving parts, cracked or broken parts, and any other condition that may affect safe operation. Start the engine and if abnormal noise or vibration occurs, have the problem corrected before further use. Do not use the chipper/shredder if its' damaged or in poor condition.

1. Before storing the chipper/shredder, unhook the spark plug wire from the spark plug and drain all the fuel out of the engine's fuel tank. Leaving old fuel in the fuel tank may clog the carburetor of the engine and prevent it from starting until all oil is properly drained. Store the chipper/shredder in a clean, dry, safe location out of reach of children and other unauthorized people.

# Troubleshooting

PROBLEM	SOLUTION
Engine will not start.	<ul style="list-style-type: none"> <li>• Add gas to the gas tank.</li> <li>• Connect spark plug wire to the spark plug.</li> <li>• For a cold start, engine control lever must be at choke.</li> </ul>
Engine runs rough, floods during operation.	<ul style="list-style-type: none"> <li>• Clean or replace the air cleaner.</li> <li>• Move choke to the "RUN" position.</li> </ul>
Engine is hard to start.	<ul style="list-style-type: none"> <li>• Drain old fuel and replace with fresh fuel. Use gas stabilizer at the end of the season.</li> <li>• Make sure spark plug wire is securely attached to spark plug.</li> </ul>
Engine loses or lacks power.	<ul style="list-style-type: none"> <li>• Remove and clean the fuel tank.</li> <li>• Clean or replace the air cleaner.</li> <li>• Improper carburetor adjustment, take to an authorized engine service center.</li> <li>• Replace the spark plug and adjust gap.</li> <li>• Drain and refill the gas tank and carburetor.</li> </ul>
Engine exhaust is black.	<ul style="list-style-type: none"> <li>• Dirty air filter. Replace or clean the air filter(s).</li> <li>• Choke closed. Open the choke.</li> </ul>
Engine runs, but no material is discharged.	<ul style="list-style-type: none"> <li>• Discharge chute is clogged. Stop engine and clear obstruction and debris.</li> <li>• Engine not running at full speed. Move the Engine control lever to the "fast" position.</li> </ul>
Excessive branch vibration when chipping materials. Extra force required to feed branches into the chipper.	<ul style="list-style-type: none"> <li>• Chipper knives are dull. Sharpen or replace the chipper knives.</li> <li>• Tree limbs are extremely hard or dry. Material is not suitable for chipping.</li> </ul>
Unusual noise or vibration when chipping materials.	<ul style="list-style-type: none"> <li>• Rotor overloaded with material. Allow the chipper to clear before adding more material to the hopper.</li> <li>• Hammers are broken, bent, or loose. Tighten or replace hammers as necessary.</li> <li>• Hammers are stuck/jammed in place. Check for obstructions and clear as necessary.</li> </ul> <p>Alternate damp and dry materials to avoid jamming.</p>

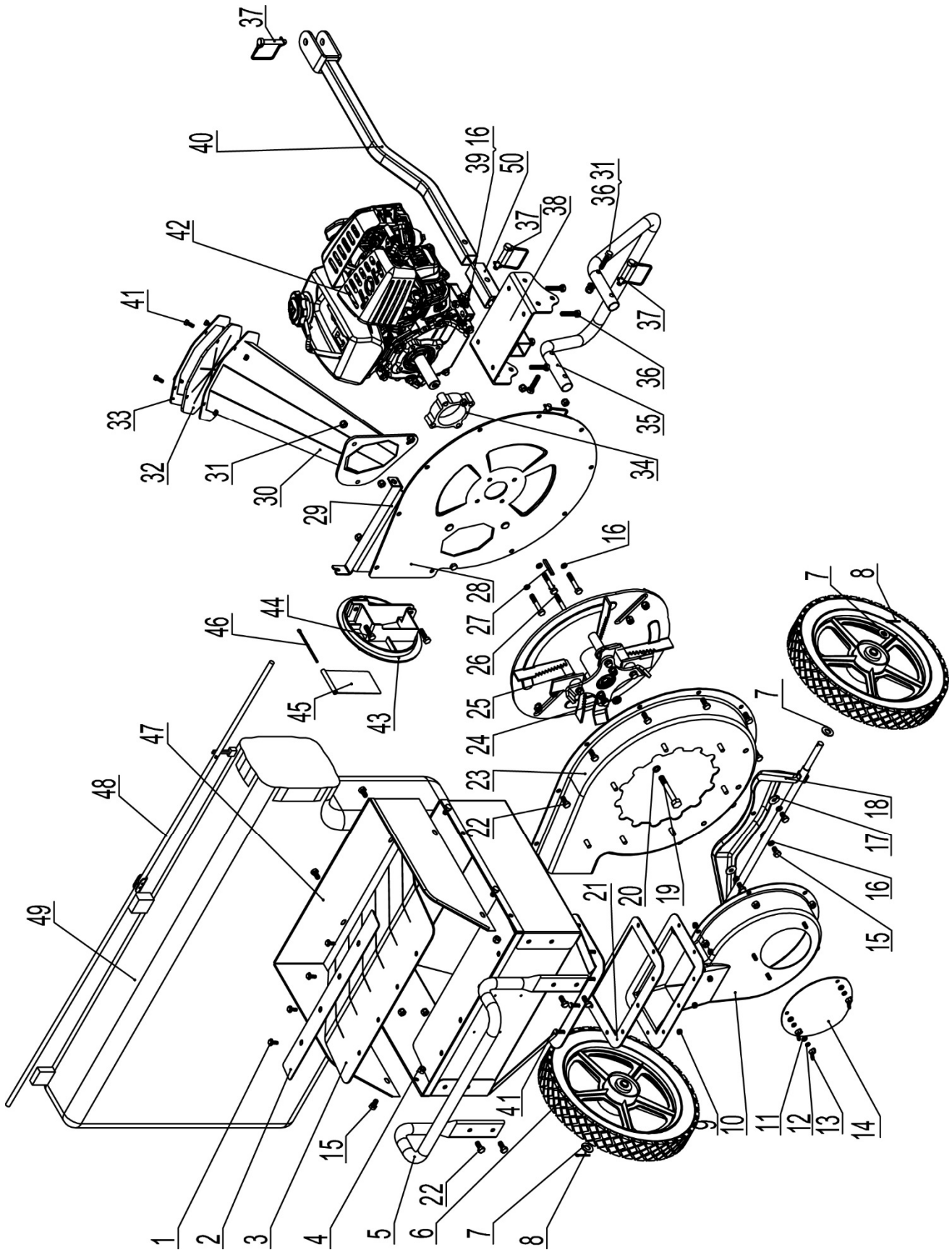
## Specifications

Chipper Capacity.....	3" Maximum Limb /Branch Diameter
Chipper Chute Opening Dimensions.....	11.57" x 8"
Shredder Hopper Capacity .....	1/2" Maximum Limb/Branch Diameter
Shredder Hopper Dimensions.....	19.6" L x 15.77" W
Accessories.....	Protective Glasses, Ear Protection, Discharge Bag
Wheel Type.....	14" Flat-free tires
Engine Type.....	6.5 HP
Overall Size.....	42.8" X24" X42.5"

**NOTE: For engine details refer to the engine owner's manual.**

**The chipper/shredder requires oil and fuel to be added before starting. Attempting to start the engine without oil will ruin the engine and void the warranty.**

# Drawing and Parts List





## Drawing and Parts List

Item#	Drawing No.	Description	Qty.
1	9115-06016-DX	M6x16 Hex Flange Bolt	4
2	CP6502-00007	Batten	1
3	CP6502-00006	Shredder Hopper Protective Film	1
4	CP6502-01000	Shredder Hopper	1
5	CP6502-00001	Handle	1
6	CP6502-00002	14" Flat-Free Tire	2
7	9301-12000-DX	Ø12 Flat Washer	4
8	9404-03030-DX	Ø3x30 Cotter Pin	2
9	9206-06000-DX	M6 Nylon Lock Nut	11
10	CP6502-02000	Rotor Housing	1
11	9301-06000-DX	Ø6 Flat Washer	3
12	9306-06000-DX	Ø6 Lock Washer	3
13	9208-06000-DX	M6 Wing Nut	3
14	CP75-00004	Cover Cap	1
15	9101-08016-DX	M8x16 Hex Bolt	9
16	9306-08000-DX	Ø8 Lock Washer	11
17	9302-08000-DX	Ø8 Large Flat Washer	3
18	CP6502-03000	Wheel Stand	1
19	MZ9101-10075-8.8	3/8"-24UNFx3" Hex Bolt	1
20	9306-10000-DX	Ø10 Lock Washer	1
21	CP75-00010	Hopper Gasket	1
22	9101-08020-DX	M8x20 Hex Bolt	12
23	CP6502-04000	Main Housing	1
24	CP6502-00015-DX	Gasket	1
25	CP6502-05000	Blade Assembly	1
26	9101-08050-DX8.8	M8x50 Hex Bolt	4
27	8801-63551	6.35x6.35x51 Flat Key	1
28	CP6502-06000	Main Board	1
29	CP6502-00003	Bag Rack	1
30	CP6502-09000	Chipper Chute	1
31	9206-08000-DX	M8 Nylon Lock Nut	36
32	CP6502-00005	Chipper Chute Flap	1

33	CP6502-09004	Chipper Chute Mounting Ring	1
34	CP6502-00010	Engine Mounting Block	1
35	CP6502-00004	Support Leg	1
36	9101-08040-DX8.8Q	M8x40 Hex Bolt	6
37	T680-20000-DX	Lock Pin	4
38	CP6502-10000	Engine Mounting Plate	1
39	9301-08000	Ø8 Flat Washer	4
40	CP6502-07000	Tow Bar	1
41	9101-06016-DX	M6x16 Hex Bolt	11
42	RH265-3112	Engine	1
43	CP6502-00008	Cover	1
44	9101-08030-DX8.8	M8x30 Hex Bolt	3
45	CP6502-08000	Wind Deflector	1
46	9404-04090-DX	Ø4x90 Cotter Pin	1
47	CP6502-00012	Hopper Fence	1
48	CP6502-11000	Bag Support Rod	1
49	CP6502-00009	Discharge Bag	1
50	CP6502-00011	Rubber Sleeve for Tow Bar	1

## Limited Warranty

### **Warranty**

For one year from the date of purchase, YTL International will replace the chipper/shredder for the original purchaser. The warranty will not apply to any chipper/shredder that was incorrectly assembled, misused, overloaded and/or was otherwise used contrarily to the manufacturer's instructions contained in the owner's manual. Any repairs, alterations or modifications to the chipper/shredder made by anyone other than an authorized representative void the warranty.

### **Warranty Exclusions**

The warranty does not cover cosmetic defects, such as paint and decals. The warranty excludes components that wear out with ordinary use over time, such as tires. The warranty will not cover failures or problems due to acts of God, or events or forces beyond the control of the manufacturer.

### **Normal Wear Exclusions**

The chipper/shredder requires periodic service to perform well. The warranty does not cover repair when normal use has exhausted the life of a part or the equipment as a whole.

### **Installation, Use and Maintenance Exclusions**

The warranty will not apply to parts and/or labor if the chipper/shredder has been misused, neglected, involved in an accident, abused, loaded beyond its limits, modified or assembled incorrectly. Normal maintenance is not covered under the warranty.

### **Limits of Implied Warranty and Consequential Damage Exclusions**

YTL International disclaims any obligation to cover any loss of time, use of this product, freight, or any incidental or consequential claim by anyone incurred from using the chipper/shredder. THIS WARRANTY IS IN LIEU OF ALL OTHER WARRANTIES, EXPRESS OR IMPLIED, INCLUDING WARRANTIES OF MERCHANTABILITY OR FITNESS FOR A PARTICULAR PURPOSE.

An exchanged chipper/shredder will be subject to the original warranty date. The length of the warranty governing the exchanged unit will be calculated from the purchase date of the original unit. The warranty gives you certain legal rights which may change from state to state. Your state may also have other rights you may be entitled to that are not listed within this warranty.

### **Contact Information**

YTL International Inc.

17517 Fabrica Way Suite H

Cerritos, CA 90703

Phone: (888) 723-6534

Phone: (562) 404-8016

Fax: (562) 404-8013

Email: [parts@ytlinternational.com](mailto:parts@ytlinternational.com)