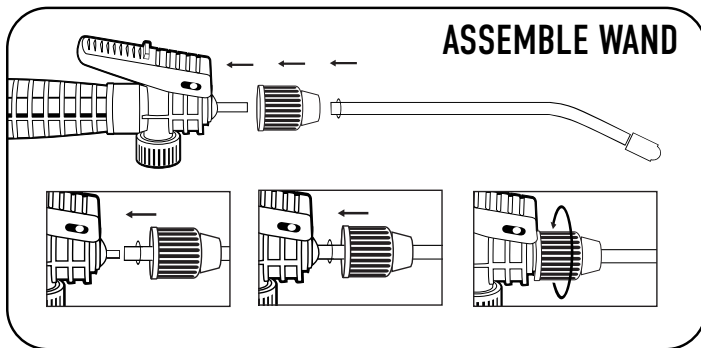




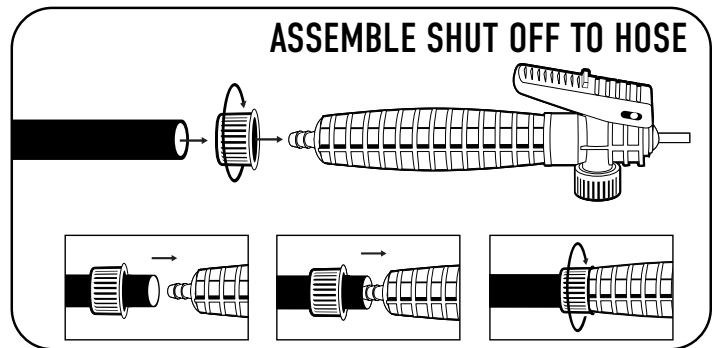
1388528 Groundwork®

Pump Sprayer

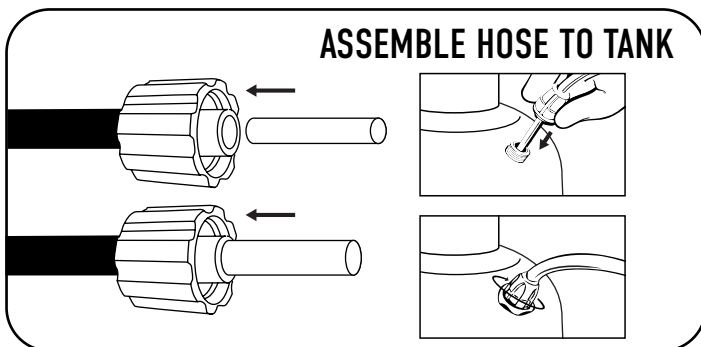
If you have any questions or concerns,  
or missing parts, do not return sprayer to the store.  
Call our hotline: 1-800-9-SPRAYER (1-800-977-7293)



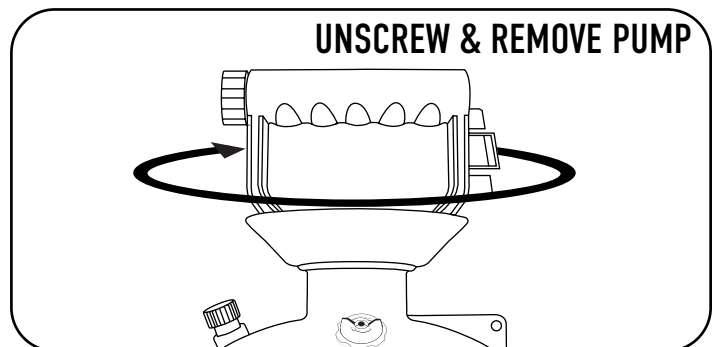
1. Insert the wand into the flow control.
2. Slide O-ring down until it touches the flow control
3. Screw the wand nut onto the flow control to secure it in place.



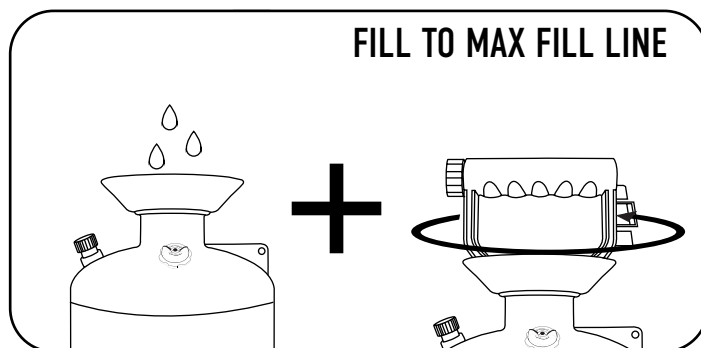
1. Remove the flow control hose nut from the flow control and slide it over the hose.
2. Push the hose over the pointed end of the flow control until the hose is touching the threads.
3. Screw the flow control hose nut onto the flow control and tighten firmly.



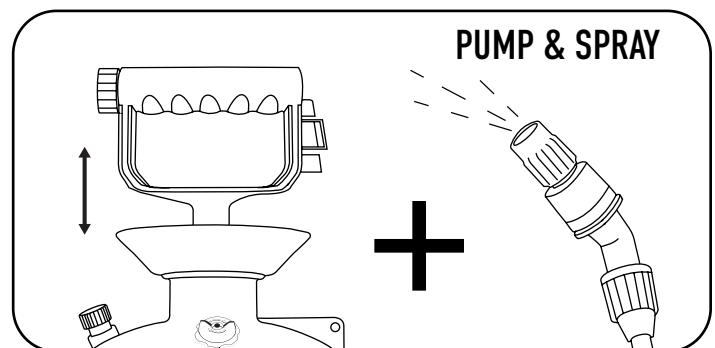
1. Insert the supply tube into the hose insert.
2. Slide the supply tube into the small tank opening.
3. Screw the hose nut onto the small tank opening and tighten firmly.



1. Remove the pump assembly from the tank by turning it counter-clockwise



1. Prepare the spray solution following the instructions listed on the chemical manufacturers' label.
2. Fill to the max fill line.
3. Screw the pump assembly back into the tank by turning clockwise.



1. To pump, unlock the pump handle and stroke up and down to build pressure.
2. To start spraying, squeeze the flow control lever.
3. For continuous spray, slide the flow control lever forward to lock it

Warnings - Before using or filling read all parts of the operating instructions. Wear protective clothing, respirator, gloves and eye protection when using, filling or operating the sprayer. Never fill sprayer with hot liquids. MAX. 85°F. (29°C) This sprayer is made to be used with agrichemicals; do not use with flammable, corrosive or caustic solutions (for example: bleach diesel fuel or acids). Do not store the sprayer in the reach of children.

LIMITED 1 YEAR WARRANTY  
Manufacturer warranty to the original purchaser that this sprayer will continue to function as intended if used in accordance with the instructions under normal consumer use for a period of one year. If the product fails to function as intended, please do not return it to the store; call our consumer hot-line at 1-800-9-SPRAYER (1-800-977-7293) This warranty does not apply to damage resulting from accident, misuse, neglect, alterations, operation not in accordance with instructions, commercial use, or normal wear and tear of O-ring or seals.

Distributed by:  
TRACTOR SUPPLY COMPANY  
5401 VIRGINIA WAY  
BRENTWOOD, TN 37027  
For customer support, call: 1-800-977-7293  
www.TractorSupply.com