

.....BMS COLT 700 LSX 2S/4S

° ∞-U" O @ouky#u@Vo

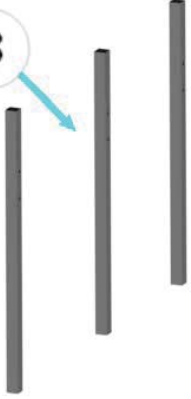
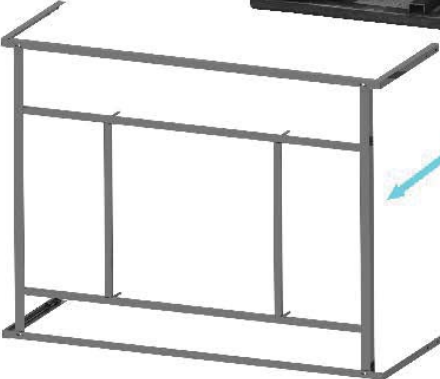
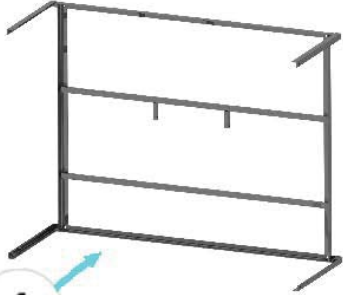


TABLE OF CONTENTS



- 1 IRON FRAME REMOVAL**
- 2 PART DETAILS**
- 3 STEERING WHEEL, SEAT REASSEMBLY**
- 4 CAB ASSEMBLY 1**
- 5 CAB INSTALLATION**
- 6 SEAT BELT ASSEMBLY**

IRON FRAME REMOVAL

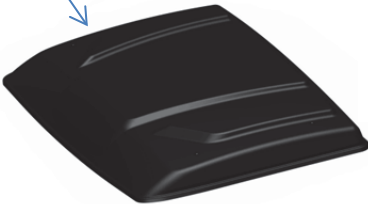


- 1. Remove front & Rear iron frame
- 2. Remove top iron frame
- 3. Remove side metal bar

PART DETAILS



Roof



Steering Wheel



Passenger seat

Driver seat



Windshield

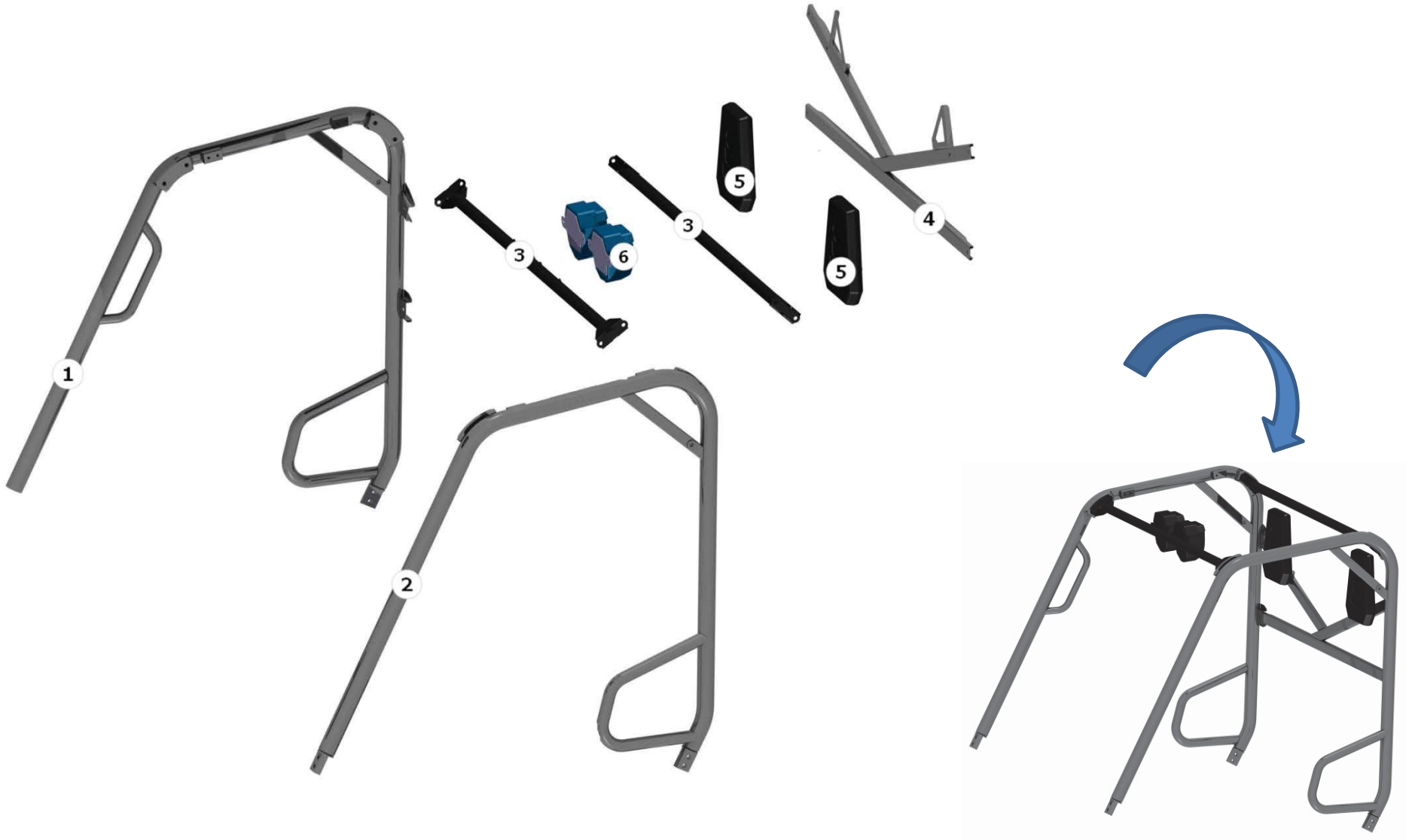


Roll cage

STEERING WHEEL, SEAT REASSEMBLY



CAB ASSEMBLY 1

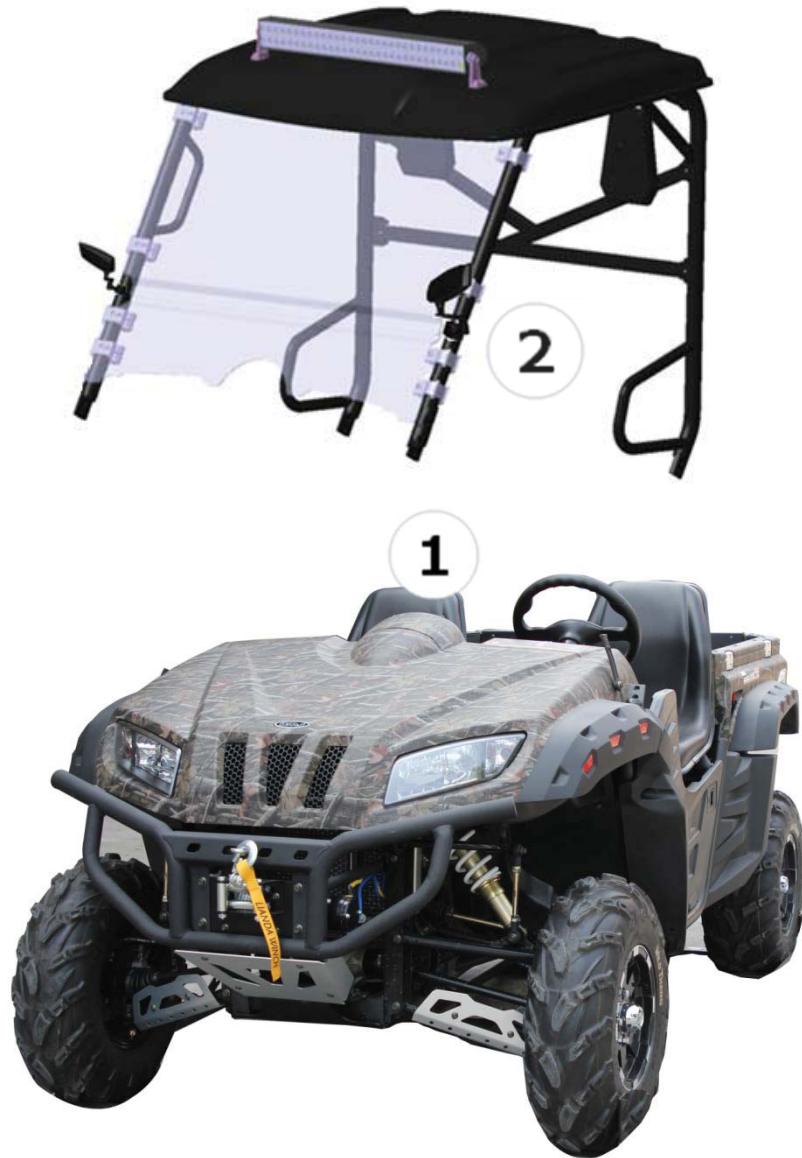


CAB ASSEMBLY 2



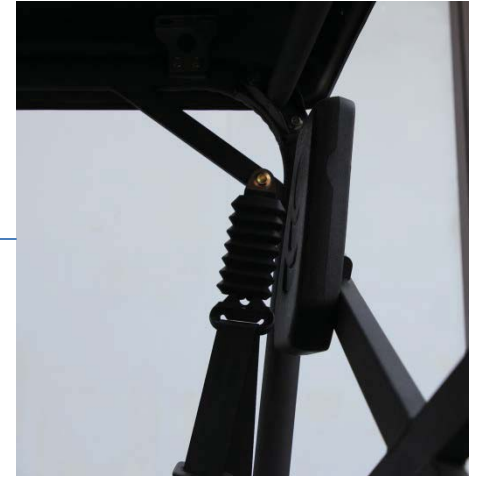
CAB INSTALLATION

DMS




SEAT BELT ASSEMBLY



DMS



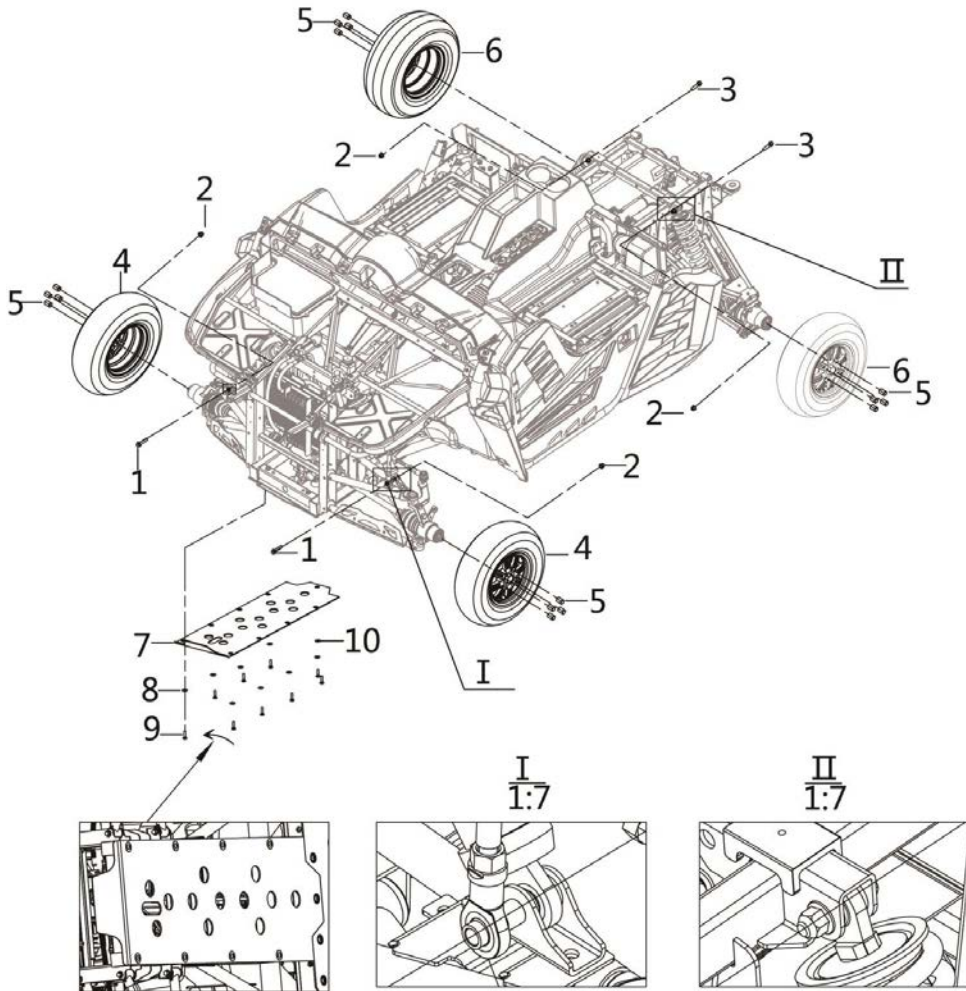
SPECIFICATIONS



| SPECIFICATIONS | |
|---|---------------------------------|
|  Engine | |
| Engine Type | Single Cylinder, 4 Stroke, SOHC |
| Cooling System | Oil and Water Cooled combine |
| Bore X Stroke | 102.00 X 84.00 mm |
| Compression Ratio | 9.50 : 1 |
| Horse Power | 43.00 HP |
| Top Speed | 45.00 mph |
| Max Torque | 62.00 |
| Ignition Type | EFI |
| Starter System | Electric & Recoil |
| Engine Oil | SAE 10W/40 |
| Lubrication | Wet Sump |
| Transmission | L-N-H-R CVT Fully Automatic |

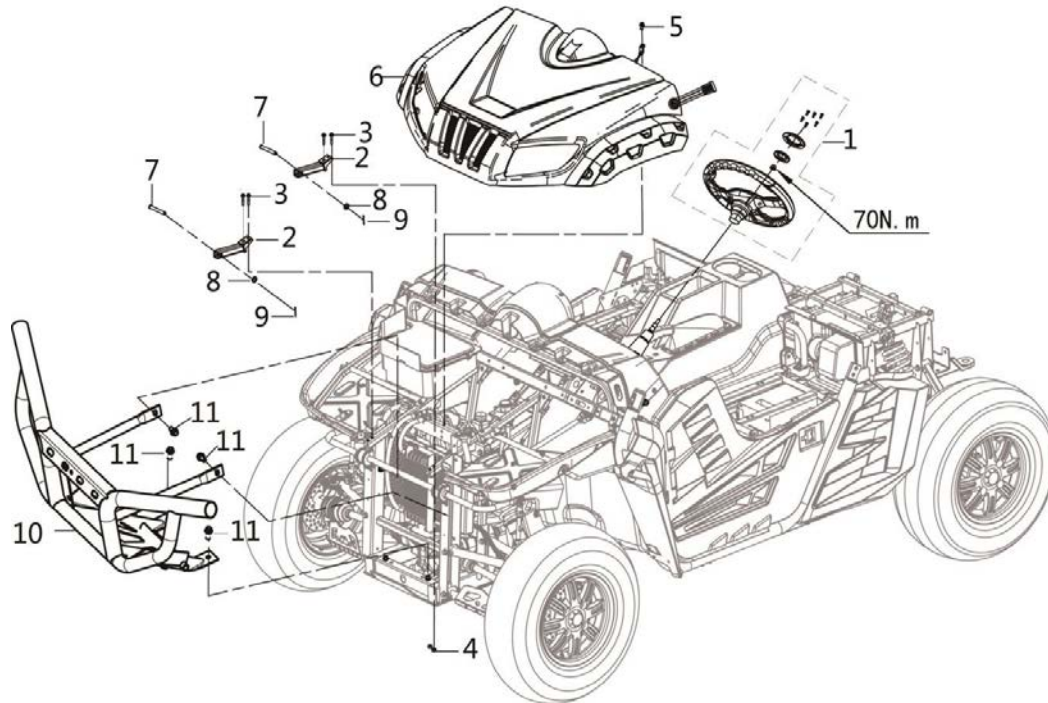
| | |
|---|-------------------------------------|
|  Chassis | |
| Front Suspension | Independent Double Swing Arm |
| Rear Suspension | Independent Double Swing Arm |
| Front Tire | AT 25 x 8-12 Radial |
| Rear Tire | AT 25 x 10-12 Radial |
| Brake (front/rear) | Both Dual Ventilated Hydraulic Disc |
|  Dimensions | |
| Overall L x W x H | 115.2 X 60.3 X 78.5 in |
| Seat Height | 33 in |
| Wheel Base | 75.30 |
| Ground Clearance | 11.20 in |
| Rider Capacity | 2 person |
| Fuel Capacity | 7.40 gallon |
| Load Capacity | 800 lbs |
| Net Weight | 1,200 lbs |
| Gross Weight | 1,200 lbs |

1、TIRE、SUSPENSION REASSEMBLY



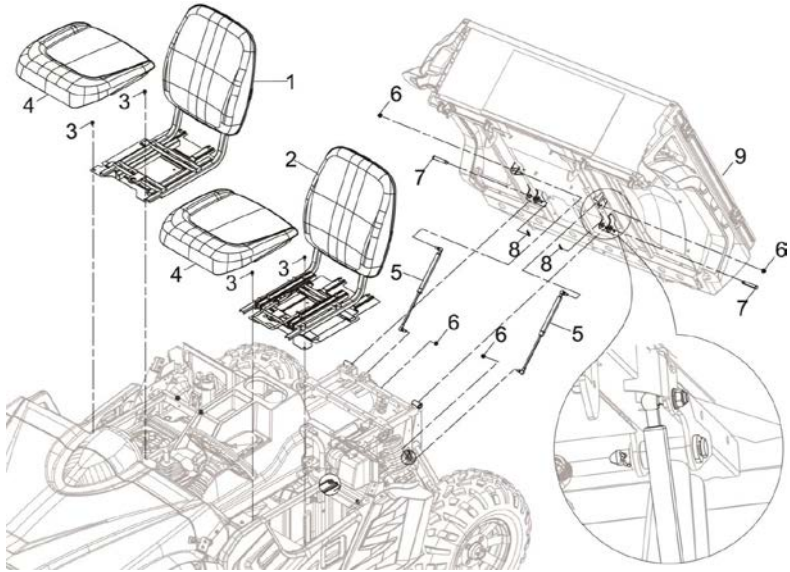
| No. | Part# | Part Name | Specification | Qty | Requirements |
|-----|----------------|-----------------------|---------------|-----|--------------|
| 1 | 380140712-0001 | BOLT | M10×1.25×80 | 2 | 52 N.m |
| 2 | 380400042-0001 | NUT | M10×1.25 | 4 | 52 N.m |
| 3 | 380140710-0001 | BOLT | M10×1.25×45 | 2 | 52 N.m |
| 4 | 290110071-0001 | HUB, FRONT WHEEL | | 2 | |
| | 290150714-0001 | TYRE ASSY. | | 2 | |
| 5 | 381590001-0001 | TAPER NUT | M10×1.25 | 16 | 52 N.m |
| 6 | 290280065-0001 | HUB, REAR WHEEL | | 2 | |
| | 290150715-0001 | TYRE ASSY. | | 2 | |
| 7 | 306560001-0001 | FRONT PROTECTIV PLATE | | 1 | |
| 8 | 380451138-0001 | WASHER, PLAIN | Φ33 , Φ7 | 8 | |
| 9 | 380190007-0001 | SCREW, HEXAGON SOCKET | M6×12 | 9 | 5 N.m |
| 10 | 380470128-0001 | WASHER, FLANGE | Φ7×Φ33×1 | 1 | |

2、STEERING WHEEL、BUMPER、FRONT FENDER REASSEMBLY



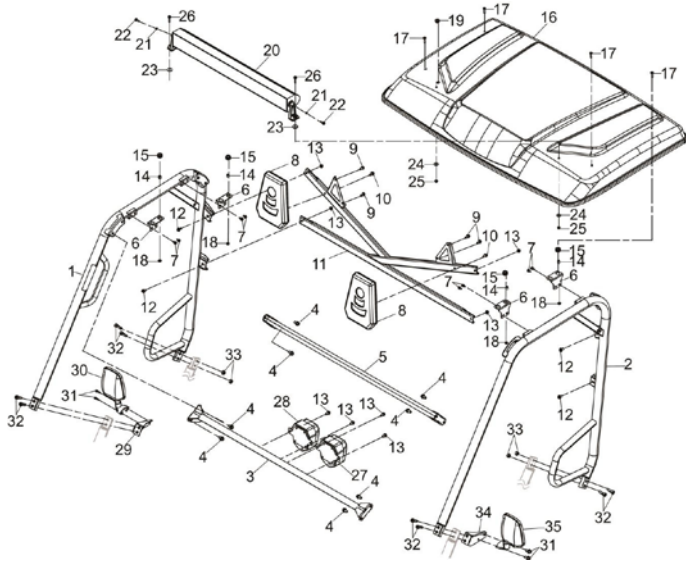
| No. | Part# | Part Name | Specificatio | QTY | Require |
|-----|------------|---------------------------------|--------------|-----|---------|
| 1 | 320550002- | STEERING WHEEL ASSY. | | 1 | |
| 2 | 341220138- | BRACKET,FRONT PANEL LEFT | | 2 | |
| 3 | 380140100- | BOLT | M6×35 | 4 | 5 |
| 4 | 380400004- | NUT | M | 4 | 5 |
| 5 | 380140067- | BOLT | M6×12 | 3 | 5 |
| 6 | 341210249 | PANEL,FRONT | | 1 | |
| | 342440154- | DASH PANEL COMP | | 1 | |
| | 349020001- | CABLE OF FRONT PANEL | | 1 | |
| | 348690001- | RIGHT PROTECTIVE COVER OF FRONT | | 1 | |
| | 348700001- | LEFT PROTECTIVE COVER OF FRONT | | 1 | |
| 6 | 348680001- | BELT OF FRONT SHIELD COVER | | 2 | |
| | 380610388- | PIN,CLEVIS | Φ12×90 | 8 | |
| 8 | 380890129- | I-RUBBER | | 2 | |
| 9 | 380590034- | PIN,COTTER | Φ3.2×32 | 2 | |
| 10 | 307690001- | BUMPER | | 1 | |
| 11 | 380140207- | BOLT | M10×1.25×2 | 4 | 35 |

3、 SEAT、 CARRIER BOX AND DAMPER REASSEMBLY



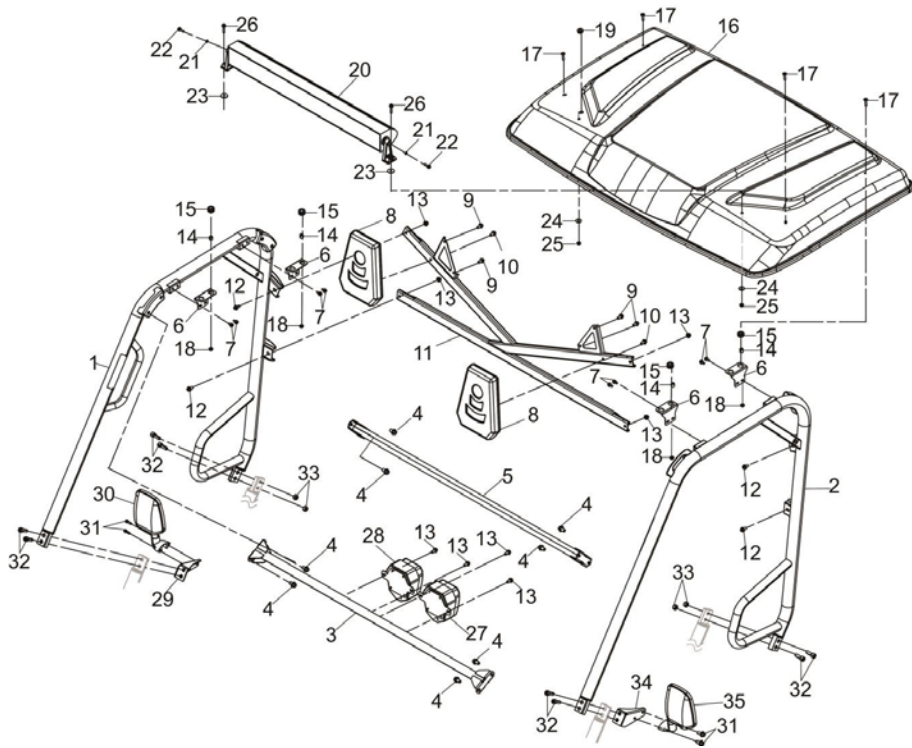
| No. | Part# | Part Name | Specification | QTY | Requirements |
|-----|----------------|--|----------------|-----|--------------|
| 1 | 336520002-0001 | LEFT SEAT BRACKET | | 1 | |
| | 330330237-0001 | BACKREST | | 1 | |
| | 307480002-0001 | INSTALLATION PLATE COMP. OF RIGHT SEAT | | 1 | |
| 2 | 336610001-0001 | RAIL ASSEMBLY | | 1 | |
| | 336520002-0001 | LEFT SEAT BRACKET | | 1 | |
| | 307610002-0001 | INSTALLATION PLATE ASSY. OF LEFT SEAT | | 1 | |
| | 330330237-0001 | BACKREST | | 1 | |
| 3 | 380140040-0001 | BOLT, HEXAGON FLANGE | | 4 | |
| | 330011143-0001 | SEAT COMP. | | 2 | |
| 5 | 353420001-0001 | AIR SUPPORTER | | 2 | |
| 6 | 380400007-0002 | NUT | M8 | 4 | 18 N.m |
| 7 | 380610378-0001 | PIN, CLEVIS | Φ16 , Φ12_L=75 | 2 | |
| 8 | 382470001-0001 | R-SHAPED LOCKING PIN | | 2 | |
| 9 | 353210001-0001 | CARGO BOX ASSY | | 1 | |
| | 353130001-0001 | PANEL OF TAIL GATE OF CARGO BOX | | 1 | |
| | 353250001-0001 | LEFT PANEL OF CARGO BOX | | 1 | |
| | 353170001-0001 | RIGHT PANEL OF CARGO BOX | | 1 | |
| | 353230001-0001 | LEFT SHIELD OF CARGO BOX | | 1 | |
| | 353150001-0001 | RIGHT SHIELD OF CARGO BOX | | 1 | |

4、 CAB ASSEMBLY (1)



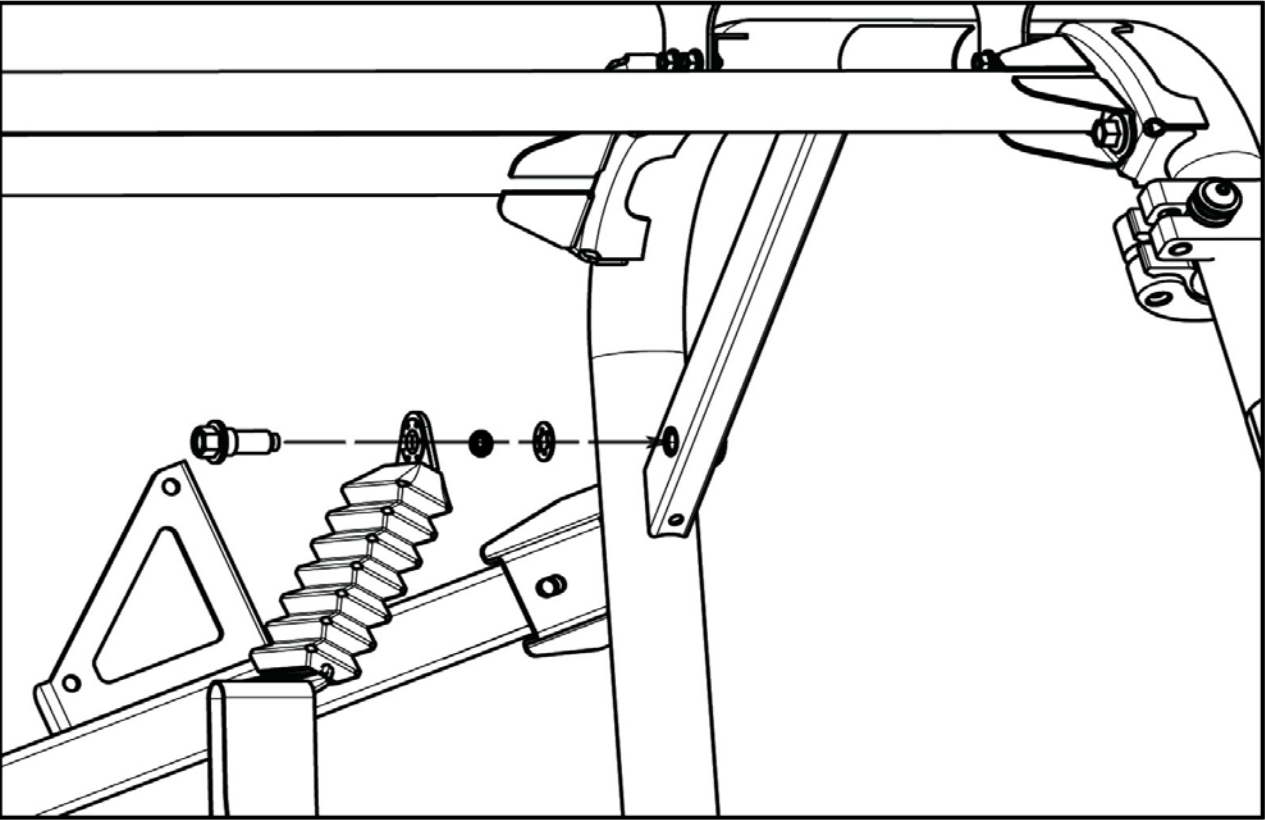
| No. | Part# | Part Name | Specification | Quantity | Requirements |
|-----|----------------|--|---------------|----------|--------------|
| 1 | 307060001-0001 | RIGHT MAIN TUBE OF OPERATOR CABIN | | 1 | |
| 2 | 307080001-0001 | LEFT MAIN TUBE OF OPERATOR CABIN | | 1 | |
| 3 | 307050001-0001 | FRONT CROSS TUBE ASSY. OF OPERATOR CABIN | | 1 | |
| 4 | 380140434-0001 | BOLT | M10×1.25×L16 | 8 | 35 N.m |
| 5 | 307910001-0001 | REAR CROSS TUBE ASSY. OF OPERATOR CABIN | | 1 | |
| 6 | 306690001-0001 | LUG OF TOP COVER | | 4 | |
| 7 | 380140067-0001 | BOLT | M6×L12 | 8 | 5 N.m |
| 8 | 332910006-0001 | HEADREST | | 2 | |
| 9 | 380190001-0001 | SCREW, HEXAGON SOCKET | M6×16 | 4 | 5 N.m |
| 10 | 380190137-0001 | SCREW, HEXAGON SOCKET | M6×35 | 2 | 5 N.m |
| 11 | 306990001-0001 | REAR FORK ASSY. OF OPERATOR CABIN | | 1 | |
| 12 | 380140040-0001 | BOLT | M8×16 | 4 | 18 N.m |
| 13 | 380400007-0002 | NUT | M8 | 8 | 18 N.m |
| 14 | 380821805-0001 | COLLAR | Φ12×Φ6.5×L12 | 4 | |
| 15 | 380890129-0001 | I-RUBBER | | 4 | |
| 16 | 343510018-0001 | TOP COVER OF OPERATOR CABIN | 1355×826×131 | 1 | |
| 17 | 380190001-0001 | SCREW, HEXAGON SOCKET | M6×16 | 4 | 5 N.m |
| 18 | 382480002-0001 | HEX. FLANGE NUT | M6 | 4 | 5 N.m |

4、 CAB ASSEMBLY (2)

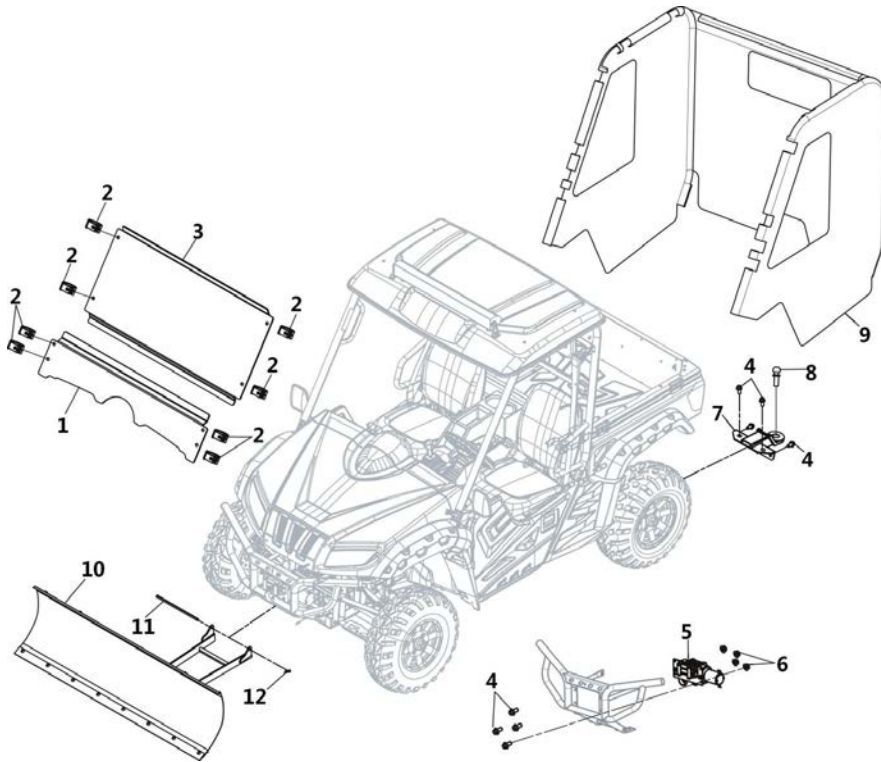


| No. | Part# | Part Name | Specification | QTY | Requirements |
|-----|----------------|-----------------------------|---|-----|--------------|
| 19 | 380890314-0001 | I-RUBBER | $\Phi 8 \times \Phi 12-3 \times \Phi 20 \times 9$ | 1 | |
| 20 | 285250001-0001 | TOP LIGHT | | 1 | |
| 21 | 380460003-0002 | WASHER, ELASTIC | | 2 | |
| 22 | 380140077-0002 | BOLT, HEXAGON FLANGE | M6_L=20 | 2 | 5 N.m |
| 23 | 380920094-0001 | PLAIN WASHER, RUBBER | $\Phi 6_ \Phi 20$ | 2 | |
| 24 | 380450365-0002 | WASHER, PLAIN | $\Phi 6_ \Phi 25$ | 2 | |
| 25 | 380400004-0002 | NUT | M6 | 2 | 5 N.m |
| 26 | 380140054-0001 | BOLT | M6_L=30 | 2 | 5 N.m |
| 27 | 281960010-0001 | RADIO | | 1 | |
| 28 | 281970013-0001 | SPEAKER, RADIO | | 1 | |
| 29 | 271480054-0001 | SEAT, LEFT REAR VIEW MIRROR | | 1 | |
| 30 | 360530421-0001 | MIRROR, RIGHT REAR VIEW | | 1 | |
| 31 | 380190008-0002 | SCREW, HEXAGON SOCKET | | 4 | |
| 32 | 380190014-0001 | SCREW, HEXAGON SOCKET | M10 \times 30 | 8 | 35 N.m |
| 33 | 380390020-0001 | NUT | M10 | 8 | 35 N.m |
| 34 | 271480053-0001 | SEAT, LEFT REAR VIEW MIRROR | | 1 | |
| 35 | 360500421-0001 | MIRROR, LEFT REAR VIEW | | 1 | |

5, SAFETY BELT REASSEMBLY

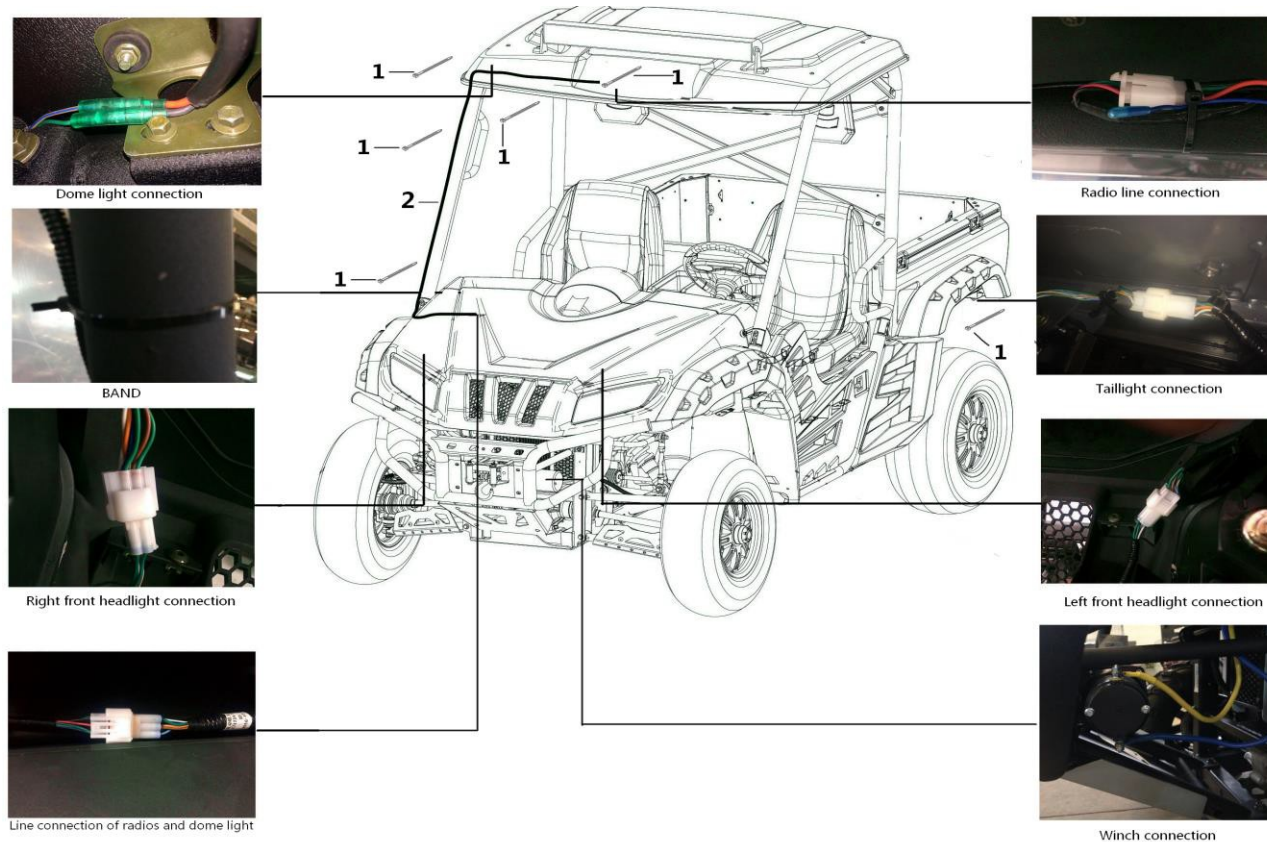


6. ATTACHMENT REASSEMBLY



| No. | Part# | Part Name | Specification | QTY | Requirements |
|-----|----------------|--------------------------------|---------------|-----|--------------|
| 1 | 348670001-0001 | LOWER PART OF WINDSHIELD GLASS | | 1 | |
| 2 | 380970101-0001 | HOOP | | 6 | |
| | 382420001-0001 | DAMPING RUBBER | | 12 | |
| 3 | 348660001-0001 | UPPER PART OF WINDSHIELD GLASS | | 1 | |
| 4 | 380140207-0001 | BOLT | M10×1.25_L=20 | 8 | 35 N.m |
| 5 | 274340001-0001 | WINCH | | 1 | |
| | 262190001-0001 | CONNECTIVE PLATE OF WINCH | | 1 | |
| | 260630001-0001 | LEADING BOGIE,CAPSTAN | | 1 | |
| 6 | 380400001-0002 | NUT | M10×1.25 | 4 | 35 N.m |
| 7 | 362470001-0001 | BRACKET OF TRAILER | | 1 | |
| 8 | 362450001-0001 | BALL JOINT OF TRAILER | | 1 | |
| 9 | 362500001 | WINDSHIELD COVER | | 1 | |
| 10 | 362430001-0001 | SNOWSHOVEL ASSY. | | 1 | |
| 11 | 380610383-0001 | PIN,CLEVIS | d=12_L=330 | 1 | |
| 12 | 382470001-0001 | R-SHAPED LOCKING PIN | | 1 | |

7、 WIRING INSTRUCTIONS AFTER INSTALLATION



| No. | Part# | Part Name | Specification | Quantity | Requirements |
|-----|----------------|--------------|---------------|----------|--------------|
| 1 | 380900267-0001 | BAND | | 4 | |
| 2 | 271231791-0001 | HARNESS,WIRE | | 1 | |