



10-GALLON LOW-PROFILE ANTIFREEZE DRAIN WITH ELECTRIC EVACUATION PUMP USER'S MANUAL

Part No. JDI-AFT10E

FOR WARRANTY INFORMATION, PLEASE CALL 800-433-0708

DATE OF PURCHASE: _____

READ AND SAVE THIS MANUAL

FOR SERVICE ASSISTANCE, CALL 800-433-0708 OR VISIT JOHNDOW.COM



Important Safety Information

Read this manual and safety information before using this tank.



DANGER

Indicates a hazardous situation that, if not avoided, could result in death or serious injury.

- Personnel should always wear proper protection equipment and clothing.
- Ensure that all fittings and connections are properly tightened.
- Oil is flammable. Keep away from heat, sparks, and open flames as an explosion can result in severe personal injury including death.
- Monitor the fluid level when filling the drain to prevent overflow or spillage.



CAUTION

Indicates a hazardous situation that, if not avoided, could result in minor or moderate injury.

- Use care when rolling the oil drain when it is full of oil to prevent splashing or spillage.
- Periodically inspect the screen for debris that may prevent the flow of oil.
- Always connect the evacuation hose before running pump.
- Monitor the discharge hose when evacuating the drain to prevent overflow or spillage.

U.S. ENVIRONMENTAL REGULATIONS

Certain automotive fluids are considered to be compatible for recycling used oil per the US Environmental Agency (EPA). Do not mix other types of fluid with used motor oil. You must handle other types of fluid separately. See definitions below:

Used Oil Includes:

- Synthetic Oil
- Engine Oil
- Transmission Oil
- Brake Fluid
- Hydraulic Oil
- Cutting/Metal Oils

Used Oil Does Not Include:

- Antifreeze
- Gasoline
- Kerosene
- Petroleum Distillates and Solvents
- Vegetable or Animal Oils

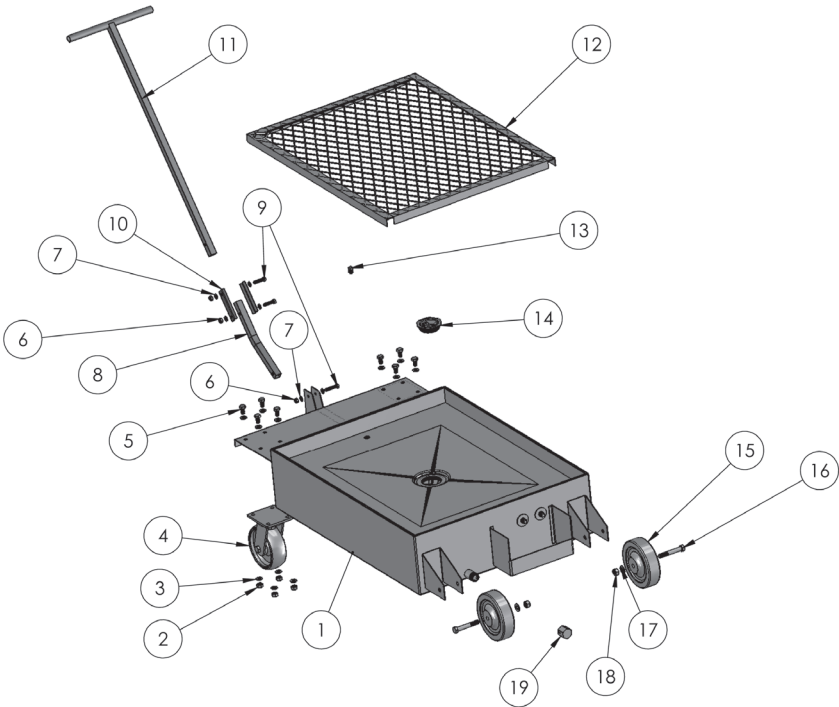
CAPACITY AND DIMENSIONS

Model No.:	JDI-AFT10E	Wheel Size (Front):	4" Swivel Casters
Gallons:	10 Gallons	Wheel Size (Rear):	4"
Material:	Steel	Handle Length:	35"
Size:	48"L x 25"W x 5"H	Weight:	60 lbs.

GETTING STARTED

Before assembly, ensure you have all parts according to the contents list. If any parts are missing or damaged, contact us for replacement.

CONTENTS



Item No.	Description	Qty
1	Tank	1
2	M10 Nylon Insert Locknut	8
3	M10 Flat Washer	16
4	6" Swivel Caster Assembly	2
5	M10 Hex Head Cap Screw	8
6	M8 Nylon - Insert Locknut	3
7	M8 Flat Washer	6
8	Handle - Lower	2
9	M8 Hex Head Cap Screw	3
10	Handle Bracket	2

Item No.	Description	Qty
11	Handle - Upper	1
12	Screen Assembly	1
13	1/4" NPT Plug	1
14	2" NPS Plug	2
15	6" Wheel	2
16	M12 Hex Head Cap Screw	2
17	M12 Flat Washer	2
18	M12 Nylon - Insert Locknut	2
19	3/4" NPT 90° Ball Valve	1

ASSEMBLY INSTRUCTIONS

1. Thread the 1/2" Male Quick Disconnect Coupler [6] onto the 7" outlet hose [3] that extends from the pump.
2. Thread the 1/2" Female Quick Disconnect Coupler [5] onto one end of the 10' evacuation hose [4].

Note: You can store the evacuation hose separately from the drain until the drain needs emptying.

OPERATING

1. Roll the drain under the vehicle to be serviced and drain the fluid.

To empty:

1. Position the drain next to the used oil receptacle.
2. Attach the 10' evacuation hose to the outlet hose using the quick disconnect coupler.
3. Put the opposite end of the evacuation hose securely into the storage receptacle.
4. Plug the electric pump into a 110v outlet to start.
5. When empty, unplug the pump and disconnect the evacuation hose.

Note: To completely empty the drain it may be necessary to slightly elevate the back end of the drain so the remaining fluid flows to the outlet port in the front.