



Model: JDI-FST15 15 Gallon Fuel Station

(UN/DOT Approved)
Operator's Manual



151 Snyder Ave.
Barberton, OH 44203
www.johndow.com
customerservice@johndow.com

9/10/18

INSTRUCTIONS PERTAINING TO THE RISK OR INJURY TO PERSONS.

IMPORTANT SAFETY INSTRUCTIONS. SAVE THESE INSTRUCTIONS.



READ THIS MANUAL CAREFULLY BEFORE INSTALLING,
OPERATING OR SERVICING THIS EQUIPMENT



DANGER GASOLINE – EXTREMELY FLAMMABLE

- VAPORS CAN EXPLODE
- HARMFUL OR FATAL IF SWALLOWED
- If swallowed, do not induce vomiting. Call physician immediately.
- Keep out of reach of children.
- Avoid prolonged breathing of vapors.
- Do not siphon by mouth.
- Do not store in vehicle or living space.
- Store and use in well-ventilated area.
- Vapors can be ignited by a spark or flame source many feet away.
- Keep away from flame, pilot lights, stoves, heaters, electric motors and other sources of ignition.
- Keep container closed.
- Do not smoke near or while using this fuel cart.



WARNING

- When using this product basic precautions should always be followed, including the following; **A)** Read all instructions before using this product. **B)** To reduce the risk of injury, close supervision is necessary.
- Ensure that all fittings and connections are tightened and leak free.
- **DO NOT** modify this tank, fittings, valves, or caps.
- Place container in horizontal position on ground when filling.
- Discharge static electricity before fueling by touching a metal surface away from the nozzle.
- Keep nozzle in contact with the container while filling. **DO NOT** use a nozzle lock-open device.
- **DO NOT** get back in vehicle while refueling. Re-entry could cause a static build up.
- Fill slowly to prevent the build up of static charges.
- If fire starts, do not remove nozzle. Back away immediately.
- Closely monitor flow to prevent spills and overfilling.
- Perform the entire closure procedure before using the fuel cart to transport fuel.
- Secure or strap container to trailer or truck bed. **DO NOT** place inside a vehicle trunk or inside passenger compartment.
- **DO NOT** use electronics or mobile phones while using this product.
- Regulations for the transportation of gasoline vary from state to state, even locally. It is the vehicle operator's responsibility to review and comply with all federal, state, and local regulations.
- Review and comply with all building and fire codes concerning the proper storage of fuel. It is the owner's/user's responsibility to comply with all building and fire codes.
- **DO NOT** store in direct sunlight.



CAUTION

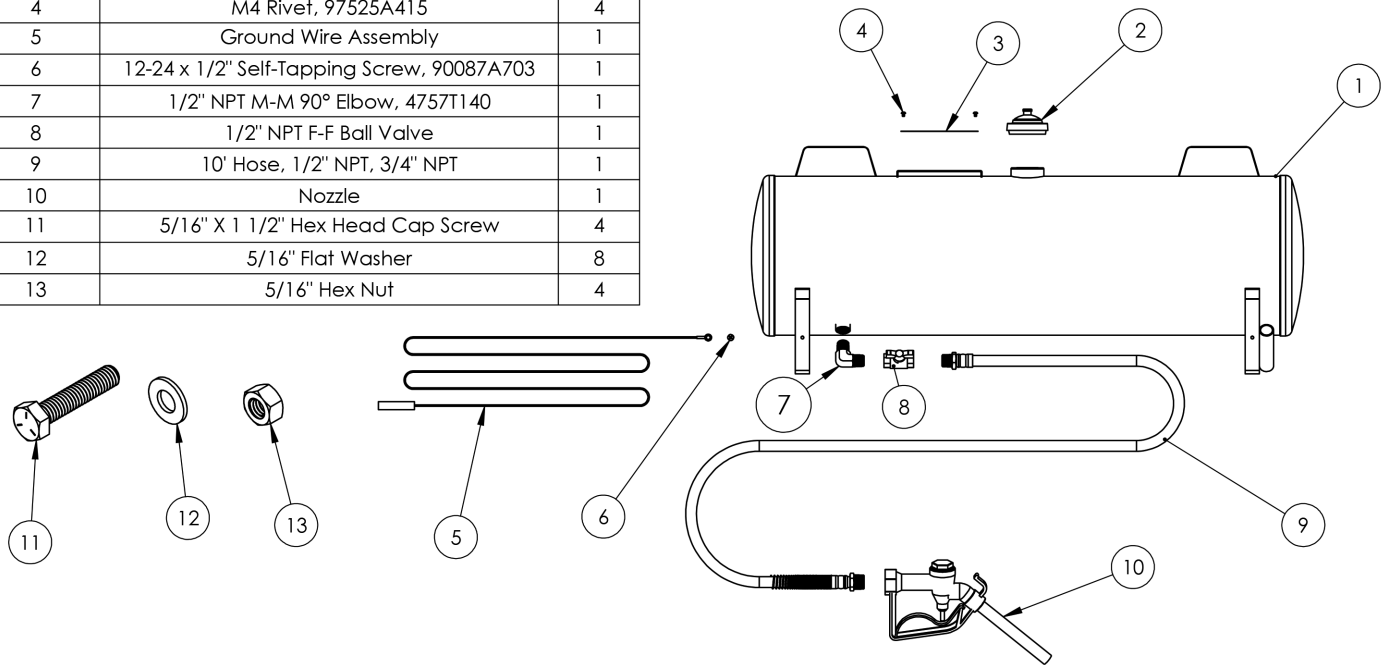
- Use fuel cart for "one type of fuel only" to avoid possible contamination or damage to equipment or motor vehicles.
- Use care when maneuvering to prevent injury or loss of control. Seek assistance to avoid strain or injury when required.

Capacity and Dimensions:

Nominal capacity:	15.0 gal. (57 liters)
Maximum fill capacity:	14.0 gal. (53.2 liters), 93% of actual to allow for thermal expansion
Tare weight:	29 lb. (13.2 kg)
Gross weight	(14.0 gal./53.2 liters of gasoline): 116.16 (52.6 kg)
Dimensions:	38.3" x 11.15" x 15.9" (975 x 285 x 405 mm)
Certification:	UN/DOT approved and marked

Contents:

PART NO.	DESCRIPTION	QTY
1	15gal Tank	1
2	Kelch Manual Vent Cap	1
3	Identification Plate	1
4	M4 Rivet, 97525A415	4
5	Ground Wire Assembly	1
6	12-24 x 1/2" Self-Tapping Screw, 90087A703	1
7	1/2" NPT M-M 90° Elbow, 4757T140	1
8	1/2" NPT F-F Ball Valve	1
9	10' Hose, 1/2" NPT, 3/4" NPT	1
10	Nozzle	1
11	5/16" X 1 1/2" Hex Head Cap Screw	4
12	5/16" Flat Washer	8
13	5/16" Hex Nut	4



Intended Use:

This steel container is a UN/DOT approved packaging for the transport of gasoline by motor vehicle and to gravity dispense fuel into gasoline powered portable equipment, vehicle fuel tanks, or other approved containers. **NOT** for use for rail, air, or marine transportation.

Assembly Instructions:

1. Attach terminal of ground wire to predrilled pilot hole on the leg using the 12-24 x 1/2" screw. Tighten until securely fastened.

To Fill Container:

1. Touch ground wire to known ground surface at dispensing station to dissipate static charges.
2. Open vent on cap to release any internal pressure. Remove cap.
3. Place station dispensing nozzle into the fill neck opening. Keep the service station dispensing nozzle in contact with the container opening while filling. **DO NOT** use nozzle lock-open device. **DO NOT** reenter vehicle while filling. Re-entry can cause a static charge build up.
4. Closely monitor flow to prevent spills and overfilling of container. **DO NOT** fill container above the bottom fill indicator tab. Overfilling above this tab will not allow sufficient volume for expansion.
5. Securely close fill cap when finished by turning clockwise until it locks. Close cap vent.
6. Wipe any residual fuel from outside of container and allow to evaporate.

To Dispense from Container:

1. Attach the ground wire clip end to frame of the equipment receiving the fuel to bond the fuel station to the equipment being filled. Bonding will place both the fuel station and receiving equipment at the same static charge potential.
2. Slowly crack the fill cap to vent any internal pressure.
3. Open the ball valve.
4. Place the dispensing nozzle into the receiving fuel tank that is being filled. The nozzle must remain inside the receiving tank during the fill process.
5. Fuel is gravity dispensed through the nozzle. Remove the locking clip from the nozzle. Squeeze nozzle handle to begin flow, release to stop.
6. Monitor flow and liquid levels to prevent spills.
7. When finished raise nozzle and hose above tank. Open nozzle to allow fuel to drain from the hose to the tank. Release and close nozzle, close fill cap. Place wire clip thru nozzle handle to prevent unintentional opening.

To Close for Transportation:

1. Raise nozzle and hose above tank. Crack fill cap vent. Open nozzle to allow to fuel drain from the hose to the tank. Release and close nozzle, close fill cap vent.
2. Verify that all closures are fully closed. The top cap to be turned clockwise 90 degrees until secure. The ball valve handle to be fully closed with the handle 90 degrees to the valve body.
3. Place wire clip thru nozzle handle to prevent unintentional opening.

To Mount or Secure Before Transportation:

1. Secure the container onto a trailer or truck bed in the horizontal position only. **DO NOT** place inside a vehicle trunk or inside the passenger compartment.
2. The container is designed to be permanently mounted to a trailer or bed of vehicle by bolting the legs to the frame using the (4) included 1-1/2" x 5/16 bolts, nuts, and flat washers.
3. The container may be temporarily secured with at a ratchet style polyester cargo tie down straps having a 300 lb. minimum working load (WL). **DO NOT** use friction of cam lock style straps.
4. Secure by routing the cargo straps over the tank thru the top brackets. **DO NOT** attach cargo tie down straps to the ball valve or route the straps directly against the fill cap.
5. It is the vehicle operator's responsibility to comply with all federal, state, and local regulations for the transportation of fuel including the use of placards where required.

Storage:

1. It is the user's responsibility to review and comply with all local and state building and fire codes regarding allowed quantity of fuel that may be stored and the approved storage locations.
2. Keep out of reach of children.
3. Store in well-ventilated area.
4. Keep away from flame, pilot lights, stoves, heaters, electric motors and other sources of ignition.
5. **DO NOT** store inside a residence, living space or basement.
6. **DO NOT** store in an attached garage that is connected to residence or dwelling.
7. **DO NOT** store in vehicle passenger compartment or vehicle trunk.
8. **DO NOT** store in direct sunlight.