

www.swisherinc.com

OWNER'S MANUAL

MODEL NO.

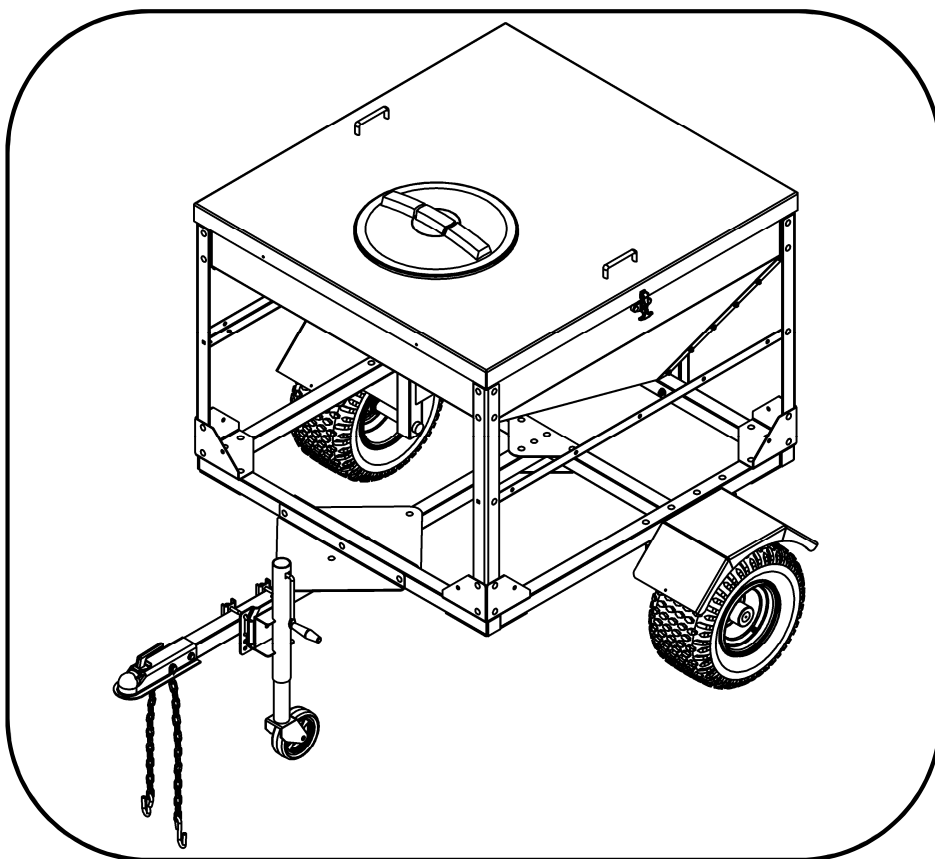
STARTING SERIAL #:
L121-221001

21500



IMPORTANT

Read and follow all
Safety Precautions
and Instructions
before operating this
equipment.



20 CuFt Tow Behind Feed Bin

Assembly
Operation
Service and Adjustment
Repair Parts

SWISHER®

SWISHER ACQUISITION INC.
1602 CORPORATE DRIVE, WARRENSBURG, MISSOURI 64093
PHONE (660) 747-8183 FAX (660) 747-8650

Made In The
USA
of US and Global Parts

TABLE OF CONTENTS

•	WARRANTY.....	3
•	SAFETY PRECAUTIONS.....	4
•	SPECIFICATIONS	4
•	OPERATING.....	5
	– INTENDED USE	
	– ATTACHING TRAIL CUTTER TO TOW VEHICLE	
	– TRANSPORTING	
	– GENERAL RECOMMENDATIONS	
	– BEFORE EASH USE	
•	SAFETY AND OPERATIONAL DECALS.....	6
•	ASSEMBLY PARTS.....	7
•	ASSEMBLY DIRECTIONS.....	8
	– AXLE & WHEEL	
	– HITCH	
	– JACKSTAND & COUPLER	
•	PARTS DIAGRAMS	11
	– COVER	
	– GATE	
	– HOPPER	
	– TRAILER FRAME	
	– HOPPER TO TRAILER FRAME	
	– HOPPER SUPPORT	
	– AXLE & HITCH	
•	GATE OPERATION.....	17
•	SUGGESTED GUIDE FOR SLOPES	18
•	ORDERING INFORMATION.....	20

LIMITED WARRANTY

The manufacturer's warranty to the original consumer purchaser is: This product is free from defects in materials and workmanship for one (1) year beginning from the date of purchase by the original consumer purchaser. We will repair or replace, at our discretion, parts found to be defective due to materials or workmanship. This warranty is subject to the following limitations and exclusions:

1) Commercial Use

This product is not intended for commercial use and carries no commercial warranty.

2) Limitation

This warranty applies only to products, which have been properly assembled, adjusted, and operated in accordance with the instructions contained within this manual. This warranty does not apply to any product of Swisher that has been subject to alteration, misuse, abuse, improper assembly or installation, shipping damage, or to normal wear of the product.

3) Exclusions

Excluded from this warranty are normal wear, normal adjustments, and normal maintenance.

In the event you have a claim under this warranty, you must return the product to an authorized service dealer. All transportation charges, damage, or loss incurred during transportation of parts submitted for replacement or repair under this warranty shall be borne by the purchaser. Should you have any questions concerning this warranty, please contact us toll-free at 1-800-222-8183. The model number, serial number, date of purchase, and the name of the authorized Swisher dealer from whom you purchased the unit will be needed before any warranty claim can be processed.

THIS WARRANTY DOES NOT APPLY TO ANY INCIDENTAL OR CONSEQUENTIAL DAMAGES AND ANY IMPLIED WARRANTIES ARE LIMITED TO THE SAME TIME PERIODS STATED HEREIN FOR ALL EXPRESSED WARRANTIES. Some states do not allow the limitation of consequential damages or limitations on how long an implied warranty may last, so the above limitations or exclusions may not apply to you. This warranty gives you specific legal rights and you may have other rights, which vary from state-to-state. This is a limited warranty as defined by the Magnuson-Moss Act of 1975.

SAFETY PRECAUTIONS

Thank you for choosing Swisher's 20 CuFt Feed Bin. Before operating, please read, understand and follow all of the safety precautions and other instructions explained in this manual.



This Safety Alert Symbol indicates important messages in this manual. When you see this symbol, carefully read the message that follows and be alert to the possibility of personal injury.

Read this manual completely. Failure to observe the following safety instructions could result in serious injury or death.

- Read the manual. Learn to operate this unit safely.
- Understand the speed, turning and stability of this unit.
- Allow only responsible adults who are familiar with these instructions to operate this unit. **Never allow children to operate this unit.**
- Children are often attracted to the unit and activity.
Never assume that children will remain where you last saw them. Keep children under the watchful care of another responsible adult.
- **No riders!**
- **Always use caution when backing.**
- Watch for traffic when operating near or crossing roadways.
- Never allow operation by untrained persons.
- Do not operate while under the influence of alcohol or drugs.
- Do not operate on slopes greater than 15 degrees.

SPECIFICATIONS

	Description
Overall Dimesions	86" L X 66" W X 54" H (57" H w/ Lid)
Unit Weight	444 Lbs
Maximum Weight Capacity	1,000 Lbs
Gross Trailer Weight Rating	1,444 Lbs
Bin Capacity	20 CuFt, Approximately 16 US Bushels
Recommended Towing Speed	5 mph Max
Tires Size	18 X 9.50-8
Recommended Tire Pressure	12 psi

GENERAL OPERATIONS



CAUTION! Tragic accidents can occur if the operator is not alert to the presence of children. Children are often attracted to the unit and activity. ***Never assume that children will remain where you last saw them.***

INTENDED USE

Your Feed Bin should be towed behind an ATV, golf cart, lawn tractor or other approved vehicle. It is not recommended for speeds exceeding **5 MPH**. Use for transporting feed to your livestock, seed to your farm implements or even as a drop feeder for wildlife management.

ATTACHING TO TOW VEHICLE

- Carefully back the tow vehicle to the Feed Bin.
- Using the 2" ball coupler, connect the hitch to the tow vehicle.
- Always use the safety chains to secure the Feed Bin to the tow vehicle.

TRANSPORTING

- This unit should not be towed on any public roads without checking the existing federal, local and state laws. Any licensing or modifications such as taillights, etc., need to comply with existing federal, local or state vehicle requirements is the sole responsibility of the purchaser. Obey all regulations when towing on public roads.
- If transporting this unit on a separate trailer, it is recommended to use ratchet straps to secure the Feed Bin Cover to the Feed Bin and the Feed Bin to the trailer.

GENERAL RECOMMENDATIONS

The warranty on this Feed Bin does **not** cover items that have been subjected to operator abuse or negligence. To receive full value from the warranty, the operator must maintain the unit as instructed in this manual. Some adjustments will need to be made periodically to maintain your unit properly.

BEFORE EACH USE

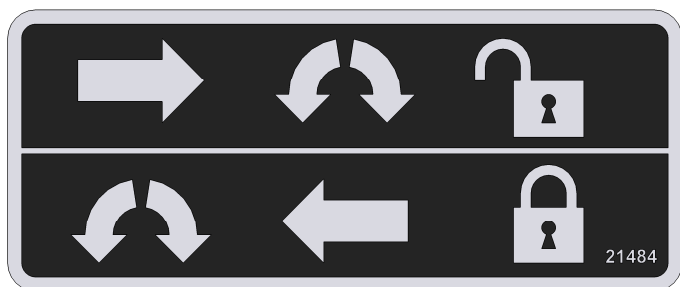
- Check for loose fasteners and securely tighten if needed.
- Check tire pressure. 12 psi is recommended.
- Make sure the Gate Mechanism is operational. See Figure 17.1.

SAFTEY AND OPERATIONAL DECALS

Replace decal immediately if damaged. Order by part number from
Swisher. 1-800-222-8183, 8-5 CT M-F



OD99112 LARGE SWISHER LOGO



21484 GATE LOCK DECAL



19988 MADE IN MISSOURI DECAL



19976 MADE IN USA DECAL



OD33 5 MPH DECAL



21204 NON HWY USE DECAL

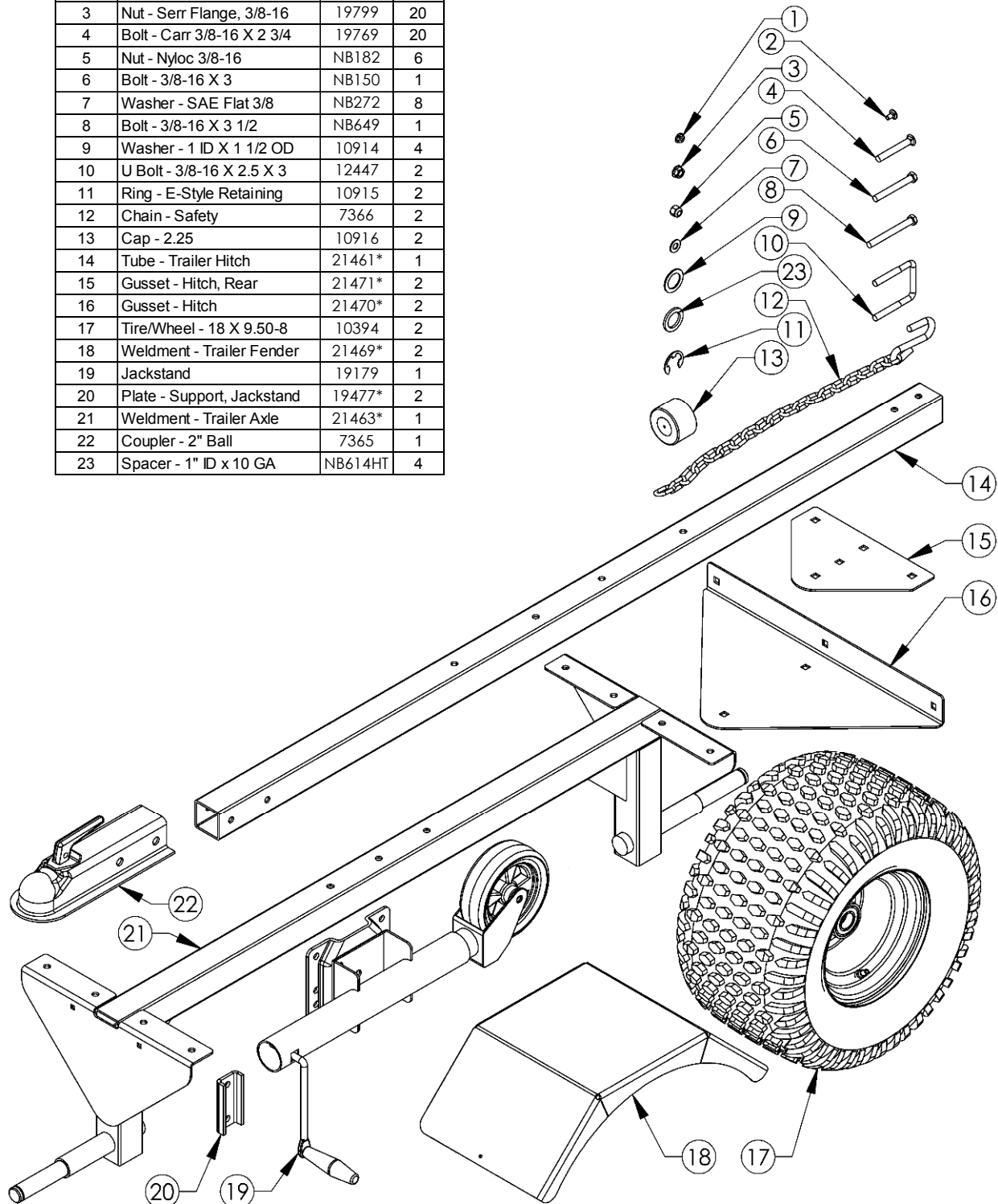
ASSEMBLY PARTS



Before assembling, make sure that all assembly parts are present.

ASSEMBLY PARTS			
Item #	Description	Part #	Qty
1	Nut - Serr Flange, 1/4-20	21485	4
2	Bolt - Carriage 1/4-20 X 1/2	21474	4
3	Nut - Serr Flange, 3/8-16	19799	20
4	Bolt - Carr 3/8-16 X 2 3/4	19769	20
5	Nut - Nyloc 3/8-16	NB182	6
6	Bolt - 3/8-16 X 3	NB150	1
7	Washer - SAE Flat 3/8	NB272	8
8	Bolt - 3/8-16 X 3 1/2	NB649	1
9	Washer - 1 ID X 1 1/2 OD	10914	4
10	U Bolt - 3/8-16 X 2.5 X 3	12447	2
11	Ring - E-Style Retaining	10915	2
12	Chain - Safety	7366	2
13	Cap - 2.25	10916	2
14	Tube - Trailer Hitch	21461*	1
15	Gusset - Hitch, Rear	21471*	2
16	Gusset - Hitch	21470*	2
17	Tire/Wheel - 18 X 9.50-8	10394	2
18	Weldment - Trailer Fender	21469*	2
19	Jackstand	19179	1
20	Plate - Support, Jackstand	19477*	2
21	Weldment - Trailer Axle	21463*	1
22	Coupler - 2" Ball	7365	1
23	Spacer - 1" ID x 10 GA	NB614HT	4

FIGURE 7.1



When ordering replacement parts

*USE PAINT CODE: GT=GREY TK=BLACK

UNCRATING/SET-UP INSTRUCTIONS

Tools Required:

Wrench/Socket



Qty.	Size
(2)	9/16"
(1)	7/16"



Use Care When
Uncrating.

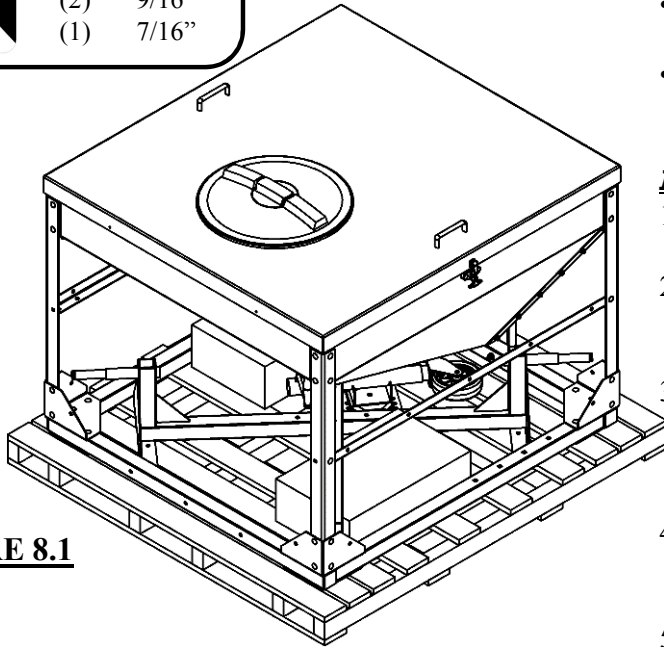


FIGURE 8.1

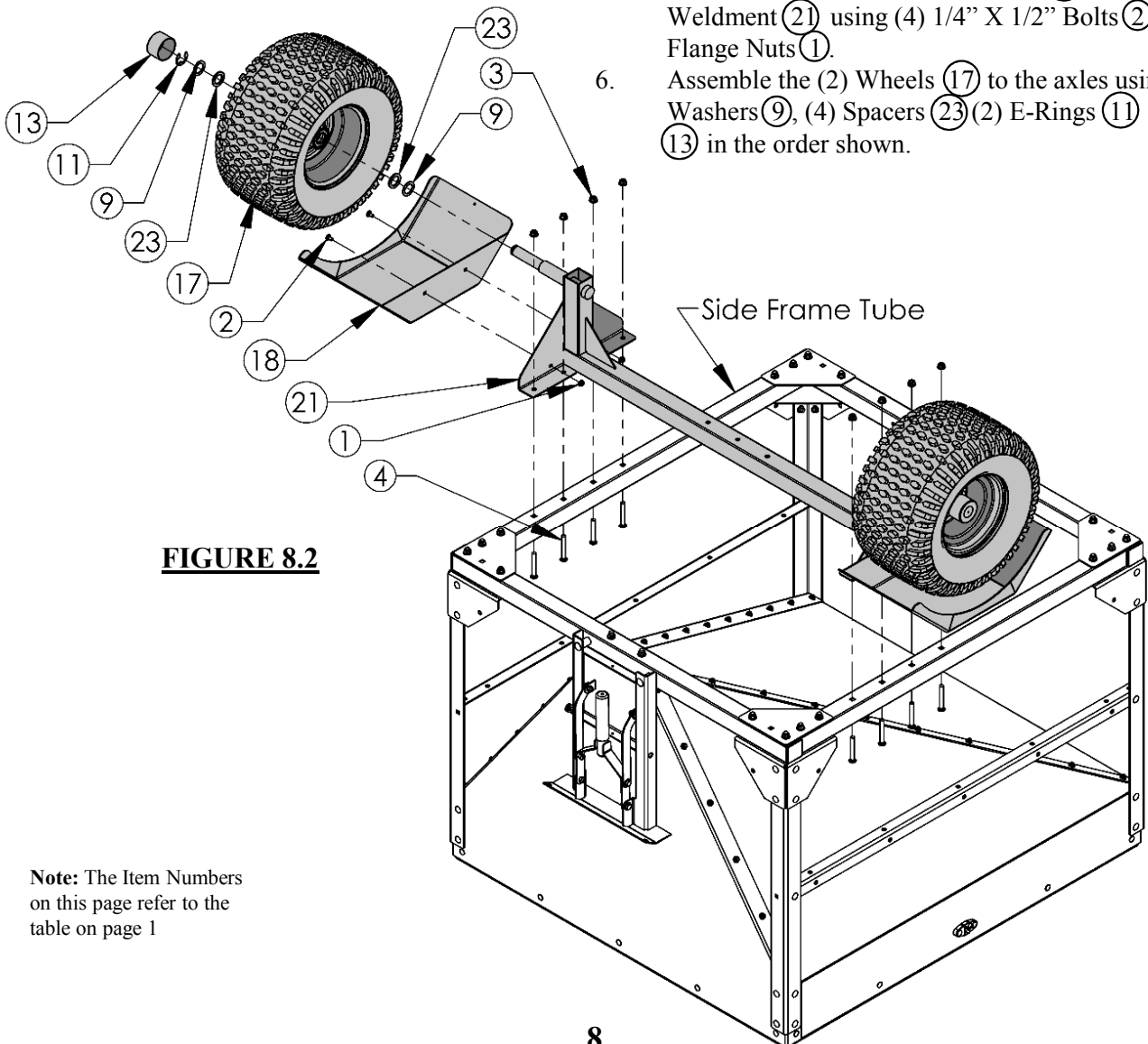


FIGURE 8.2

Note: The Item Numbers
on this page refer to the
table on page 1

GENERAL RECOMMENDATIONS

- Use at least two people to uncrate & assemble the unit. The bin and its components are very heavy.

UNCRATING See Figure 2.1

- Always wear gloves and safety glasses when disassembling the crate.
- Using a hammer and pry bar, separate the boards of the crate starting with the top. Use caution to not damage the equipment inside the crate.

AXLE & WHEEL See Figure 2.2

1. Check that all parts are present before beginning assembly. See Figure 1.1
2. Unlatch the two rubber latches securing the lid to the hopper. With help from another person, remove the lid and tires from the bin and set them aside.
3. Place a blanket or some cardboard in front of the crate base and with assistance from another person, carefully roll the hopper assembly 180° until it is upside down on the blanket or cardboard.
4. Fasten the Axle Weldment (21) to the Side Frame Tubes as shown using (8) 3/8" X 2-3/4" Bolts (4) and (8) 3/8" Flange Nuts (3).
5. Connect the (2) Fender Weldments (18) to the Axle Weldment (21) using (4) 1/4" X 1/2" Bolts (2) and (4) 1/4" Flange Nuts (1).
6. Assemble the (2) Wheels (17) to the axles using (4) 1" Washers (9), (4) Spacers (23) (2) E-Rings (11) and (2) Caps (13) in the order shown.

ASSEMBLY DIRECTIONS

HITCH See Figure 9.1

1. Loosely assemble the Hitch Tube (14) to the Axle Weldment (21) using (2) Rear Hitch Gussets (15), (5) 3/8" X 2-3/4" Bolts (4) and (5) 3/8" Flange Nuts (3).
2. Loosely assemble the Hitch Tube (14) to the Front Frame Tube using (2) Hitch Gussets (16), (7) 3/8" X 2-3/4" Bolts (4) and (7) 3/8" Nuts (3).
3. Securely tighten the hardware from the previous two steps.

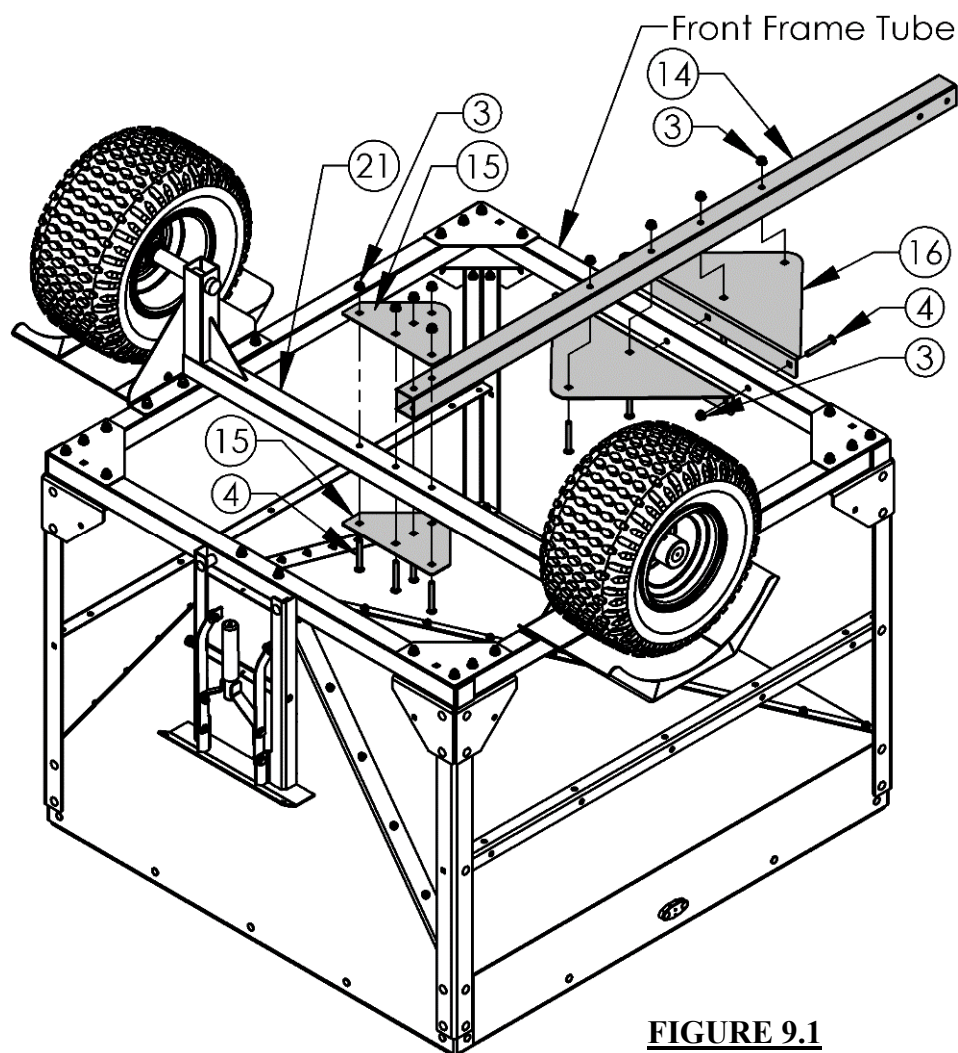


FIGURE 9.1

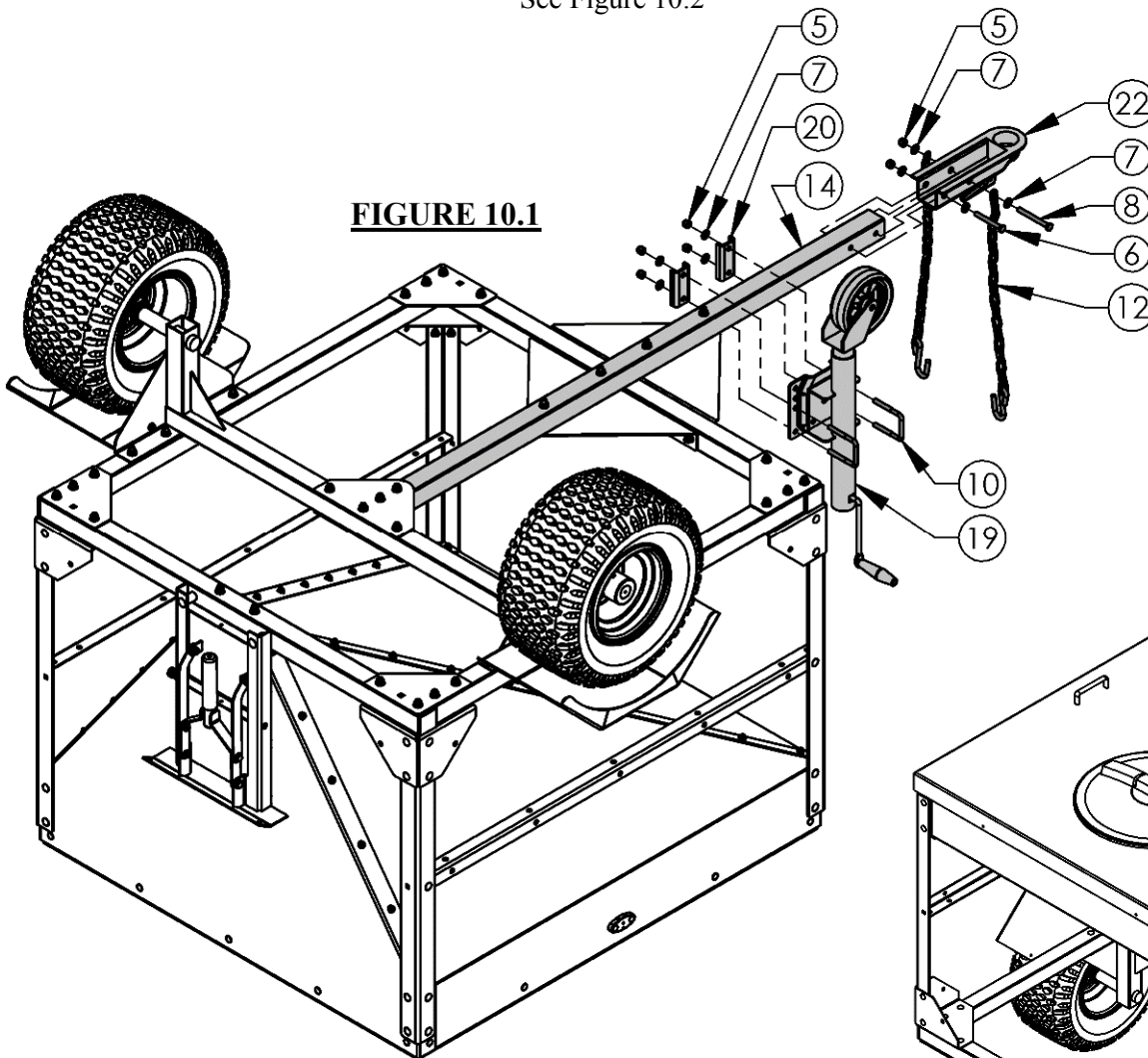
Note: The Item Numbers on this page refer to the table on page 7

ASSEMBLY DIRECTIONS

JACKSTAND & COUPLER See Figure 10.1

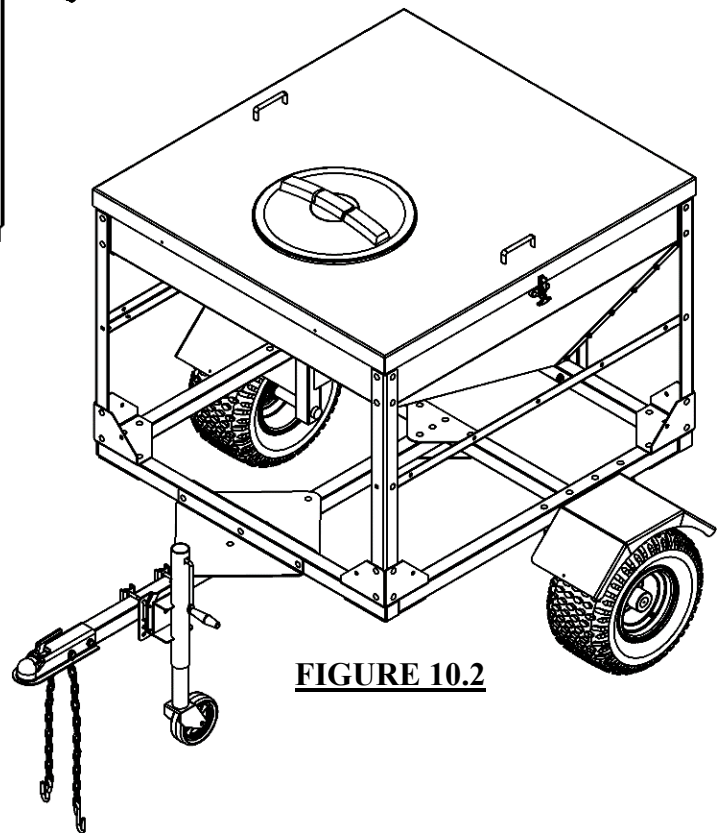
1. Assemble the Jackstand (19) to the Hitch Tube (14) using (2) U Bolts (10), (2) Support Plates (20), (4) 3/8" Washers (7) and (4) 3/8" Nyloc Nuts (5).
2. Assemble the Ball Coupler (22) to the Hitch Tube (14) using (1) 3/8" X 3 Bolt (6), (1) 3/8" X 3-1/2 Bolt (8), (4) 3/8" Washers (7), (2) Safety Chains (12) and (2) 3/8" Nyloc Nuts (5). Note the order of the parts in the diagram.
3. With assistance from another person, carefully roll the hopper assembly 180° until it is upright. See Figure 10.2

FIGURE 10.1



Note: The Item Numbers on this page refer to the table on page 7

FIGURE 10.2



PARTS DIAGRAMS

COVER ASSEMBLY

Note: Figure 11.1 depicts only the latch portion of item number 6.

Item #	Description	Part #
1	Weldment - Hopper Cover	21476*
2	Bolt - Flat Head 5-40 X 5/8	21496
3	Lid - 16" with Ring and Air Breather	21475
4	Handle - Pull, Aluminum	21487
5	Bolt - 5-40 X 3/8	21493
6	Latch - Draw, Rubber	21488
7	Nut - Nyloc 5-40	21494
8	Washer - Star Lock, #10	21345
9	Bolt - Pan Head 10-32 X 1/2	21492

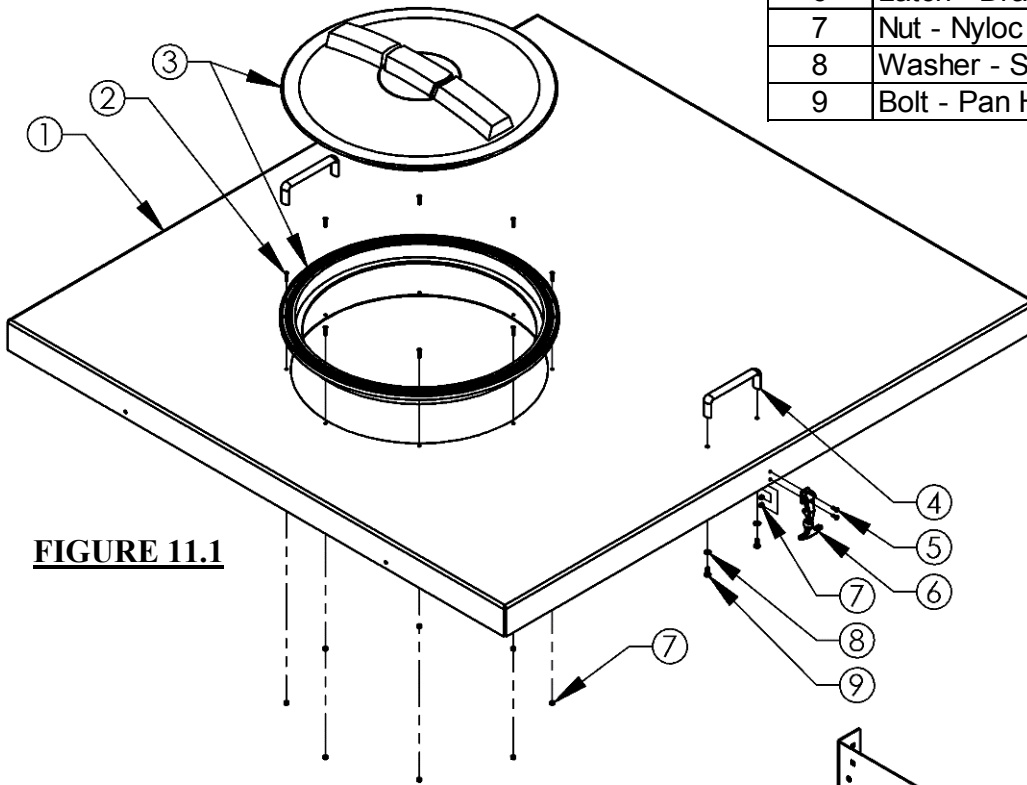


FIGURE 11.1

GATE ASSEMBLY

Item #	Description	Part #
1	Weldment - Rear Hopper Panel	21347*
2	Bolt - 5/16-18 X 3/4	NB578
3	Bushing - Linkage	18717
4	Link - Gate Handle	21452*
5	Weldment - Gate Handle	21449*
6	Nut - Nyloc 5/16-18	NB181
7	Plug - End, 1"	19784
8	Weldment - Gate	21434*
9	Grip - Handle	21085
10	Lock - Gate Position	21486
11	Nut - Jam 3/8-16	NB174

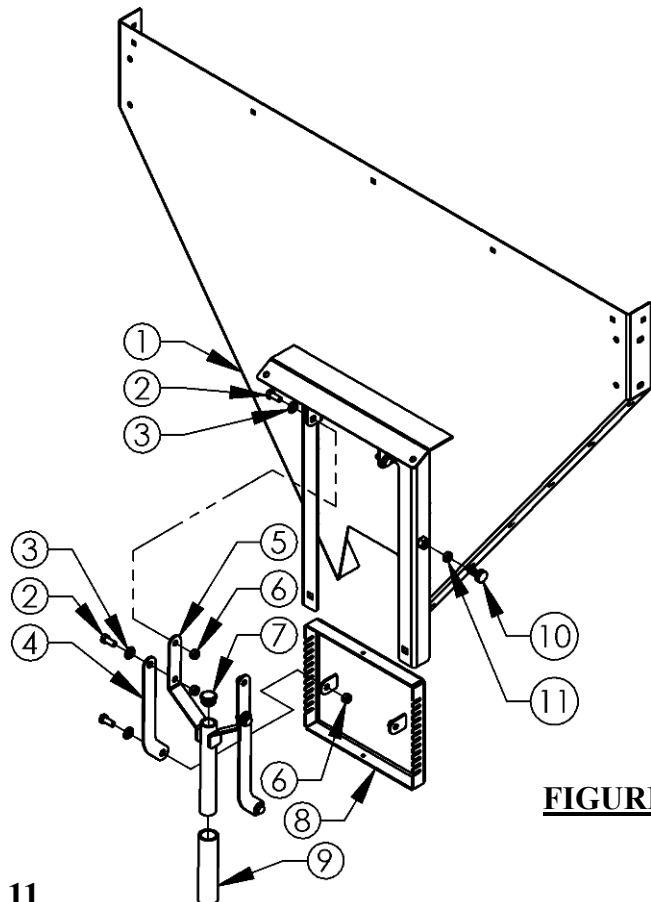


FIGURE 11.2

Note: Some parts not shown for clarity.

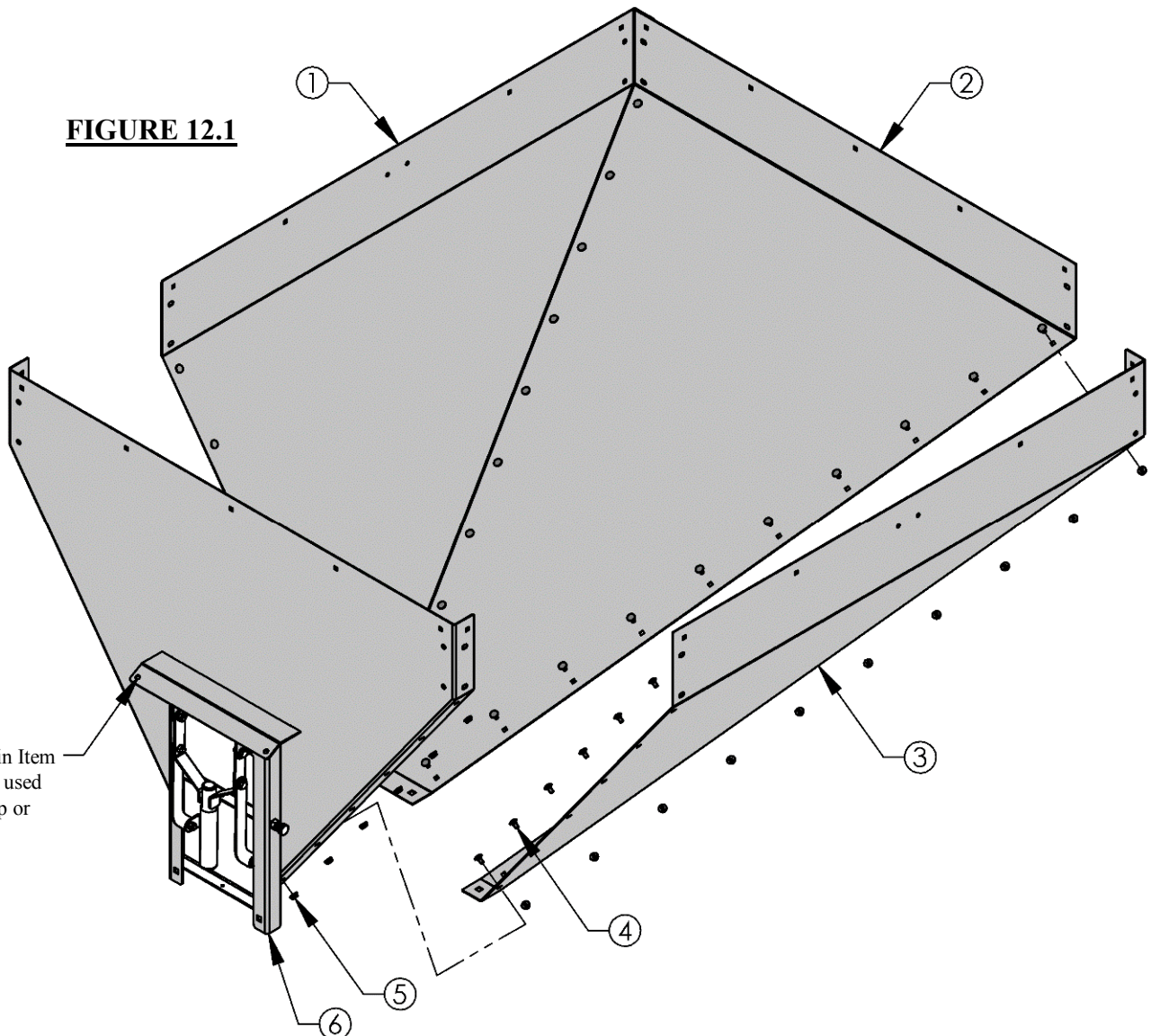
When ordering replacement parts

* = USE PAINT CODE: GT: GREY TK=BLACK

HOPPER ASSEMBLY

Item #	Description	Part #
1	Panel - Left Hopper	21431*
2	Panel - Front Hopper	21433*
3	Panel - Right Hopper	21432*
4	Bolt - Carriage 1/4-20 X 1/2	21474
5	Nut - Serr Flange, 1/4-20	21485
6	Weldment - Rear Hopper Panel	21347*

FIGURE 12.1



Note: The holes in Item Number 6 can be used for securing a tarp or ratchet straps.

Note: Some parts not shown for clarity.

When ordering replacement parts

* = USE PAINT CODE: GT: GREY TK=BLACK

TRAILER FRAME ASSEMBLY

Item #	Description	Part #
1	Leg - Hopper Support	21457*
2	Bolt - Carr 3/8-16 X 2 3/4	19769
3	Nut - Serr Flange 5/16-18	20237
4	Bracket - Leg Support	21473*
5	Plug - Tubing, 2"	50062009
6	Bolt - Carriage 5/16-18 X .75	20236
7	Gusset - Corner Frame	21472*
8	Tube - Trailer Rear	21462*
9	Nut - Serr Flange, Hex 3/8-16	19799
10	Tube - Trailer Side	21459*
11	Tube - Trailer Front	21460*

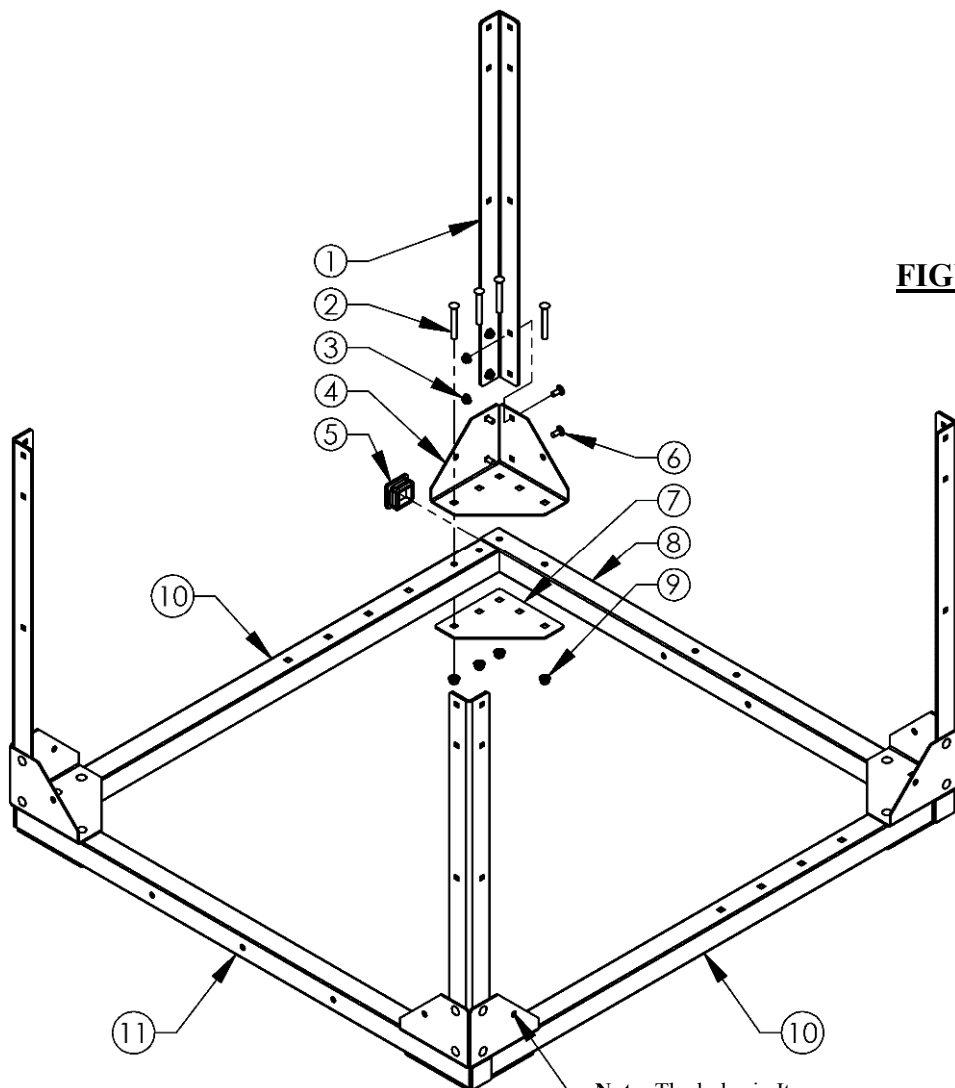


FIGURE 13.1

Note: Some parts not shown for clarity.

When ordering replacement parts

* = USE PAINT CODE: GT: GREY TK=BLACK

HOPPER TO TRAILER FRAME ASSEMBLY

Item #	Description	Part #
1	Bolt - Carr 3/8-16 X 2 3/4	19769
2	Nut - Serr Flange 5/16-18	20237
3	Bolt - Carriage 5/16-18 X .75	20236
4	Nut - Serr Flange, Hex 3/8-16	19799
5	Spacer - Gate Guide	21453*
6	Bolt - Carriage 3/8-16 X 4	21497

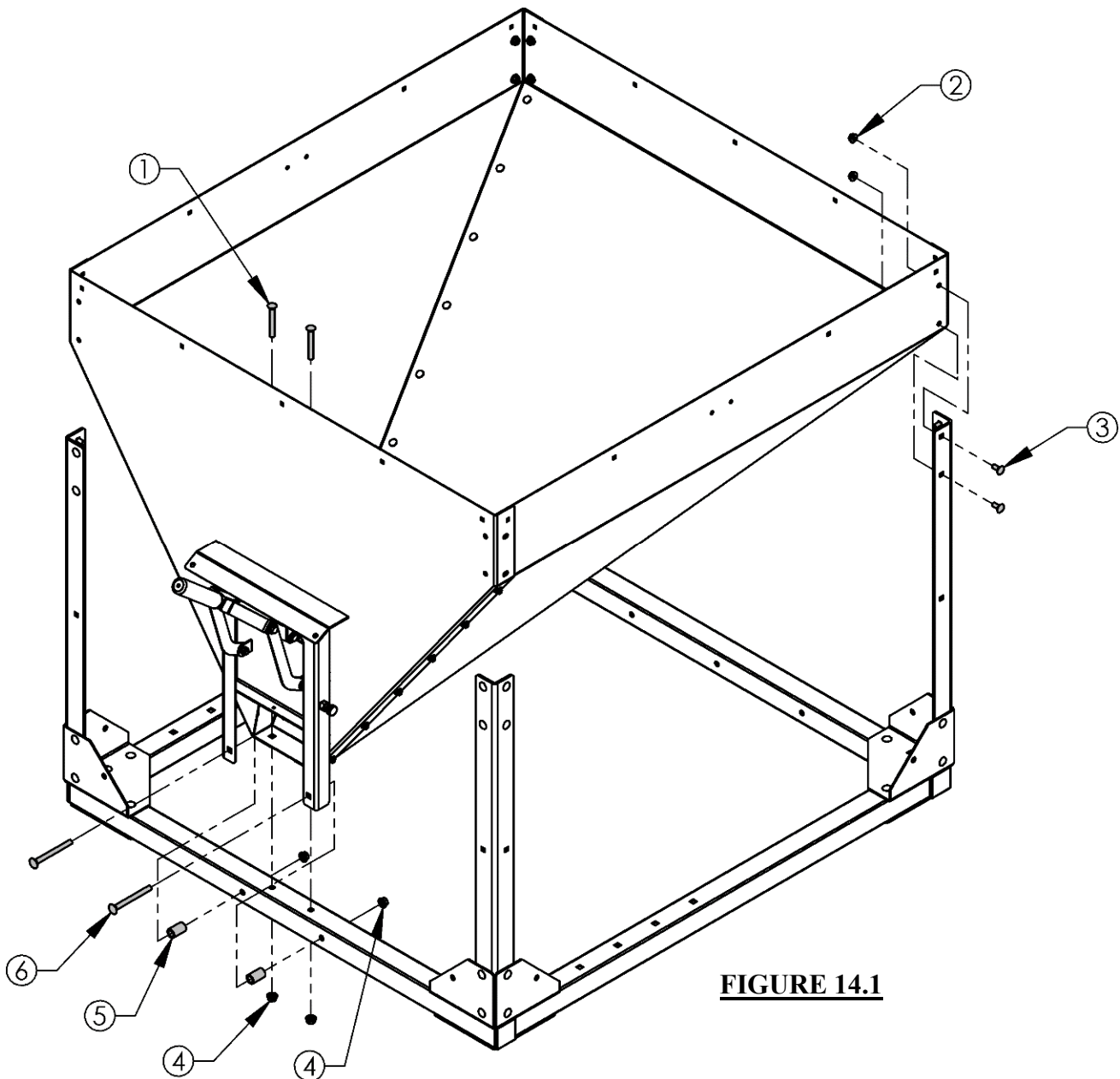


FIGURE 14.1

Note: Some parts not shown for clarity.

When ordering replacement parts

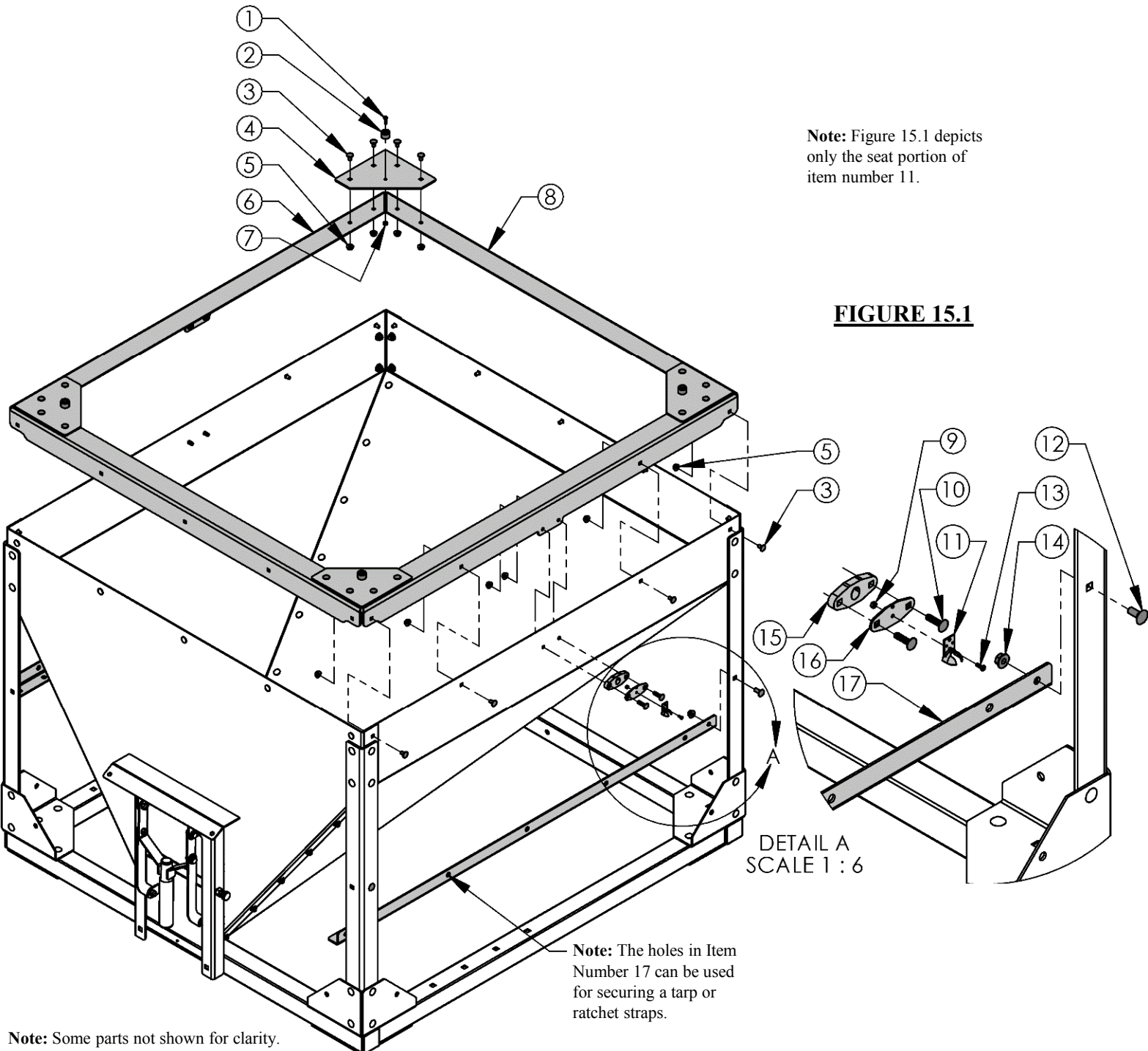
* = USE PAINT CODE: GT: GREY TK=BLACK

PARTS DIAGRAMS

HOPPER SUPPORT ASSEMBLY

Item #	Description	Part #
1	Bolt - 8-32 X 5/8	21490
2	Bumper - Rubber	21489
3	Bolt - Carriage 1/4-20 X 1/2	21474
4	Gusset - Hopper Support	21454*
5	Nut - Serr Flange, 1/4-20	21485
6	Bracket - Hopper Side Support	21455*
7	Nut - Nyloc 8-32	21491
8	Bracket - Hopper End Support	21456*

Item #	Description	Part #
9	Nut - Nyloc 5-40	21494
10	Bolt - Carriage 1/4-20 X 1	21495
11	Latch - Draw, Rubber	21488
12	Bolt - Carriage 5/16-18 X .75	20236
13	Bolt - 5-40 X 3/8	21493
14	Nut - Serr Flange 5/16-18	20237
15	Spacer - Latch Seat, .375	21479*
16	Spacer - Latch Seat, .075	21478*
17	Bracket - Tie Down	21458*



Note: Some parts not shown for clarity.

When ordering replacement parts

* = USE PAINT CODE: GT: GREY TK=BLACK

PARTS DIAGRAMS

AXLE & HITCH ASSEMBLY

Item #	Description	Part #	Item #	Description	Part #
1	Bolt - Carr 3/8-16 X 2 3/4	19769	12	Nut - Serr Flange, 3/8-16	19799
2	Washer - SAE Flat 3/8	NB272	13	U Bolt - SQ , 3/8-16 X 2.5 X 3	12447
3	Nut - Nyloc 3/8-16	NB182	14	Gusset - Hitch, Rear	21471*
4	Plate - Support, Jackstand	19477*	15	Nut - Serr Flange, 1/4-20	21485
5	Tube - Trailer Hitch	21461*	16	Weldment - Trailer Axle	21463*
6	Jackstand	19179	17	Washer - 1 ID X 1 1/2 OD	10914
7	Bolt - 3/8-16 X 3	NB150	18	Tire/Wheel - 18 X 9.50-8	10394
8	Bolt - 3/8-16 X 3 1/2	NB649	19	Ring - E-Style Retaining	10915
9	Coupler - 2" Ball	7365	20	Cap - 2.25	10916
10	Chain - Safety	7366	21	Weldment - Trailer Fender	21469*
11	Gusset - Hitch	21470*	22	Bolt - Carriage 1/4-20 X 1/2	21474
			23	Spacer- 1" x 10GA	NB614HT

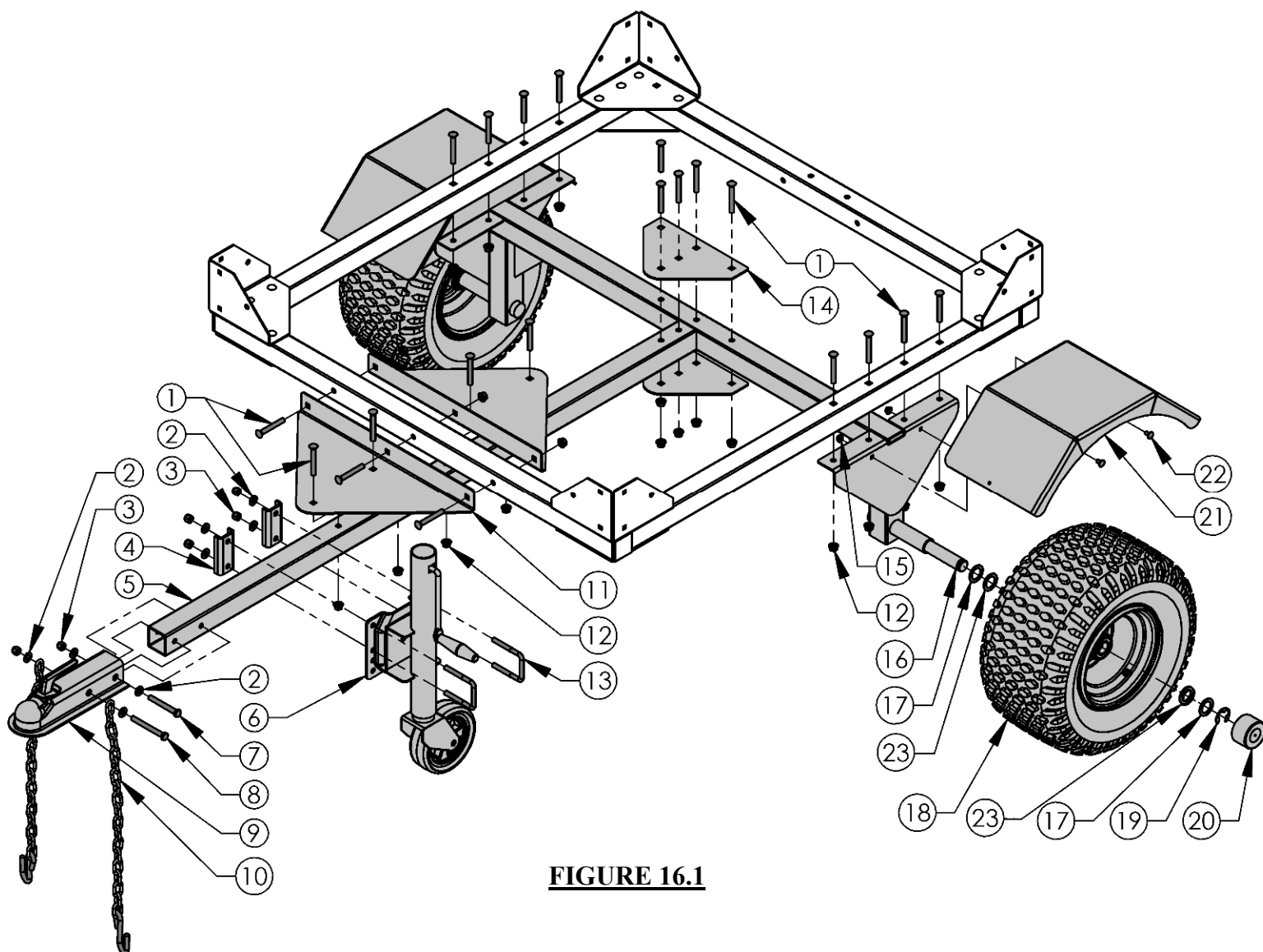


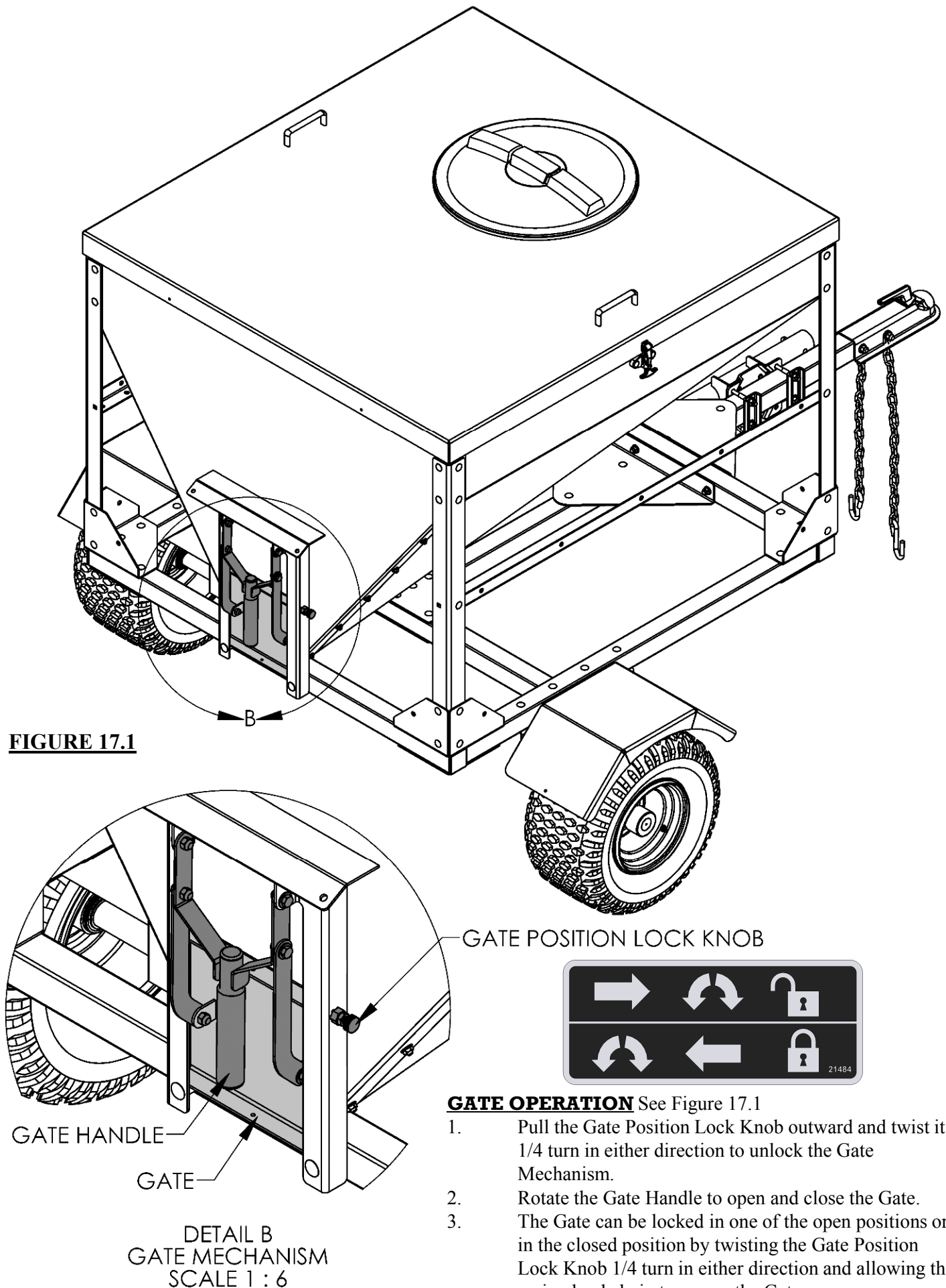
FIGURE 16.1

Note: Some parts not shown for clarity.

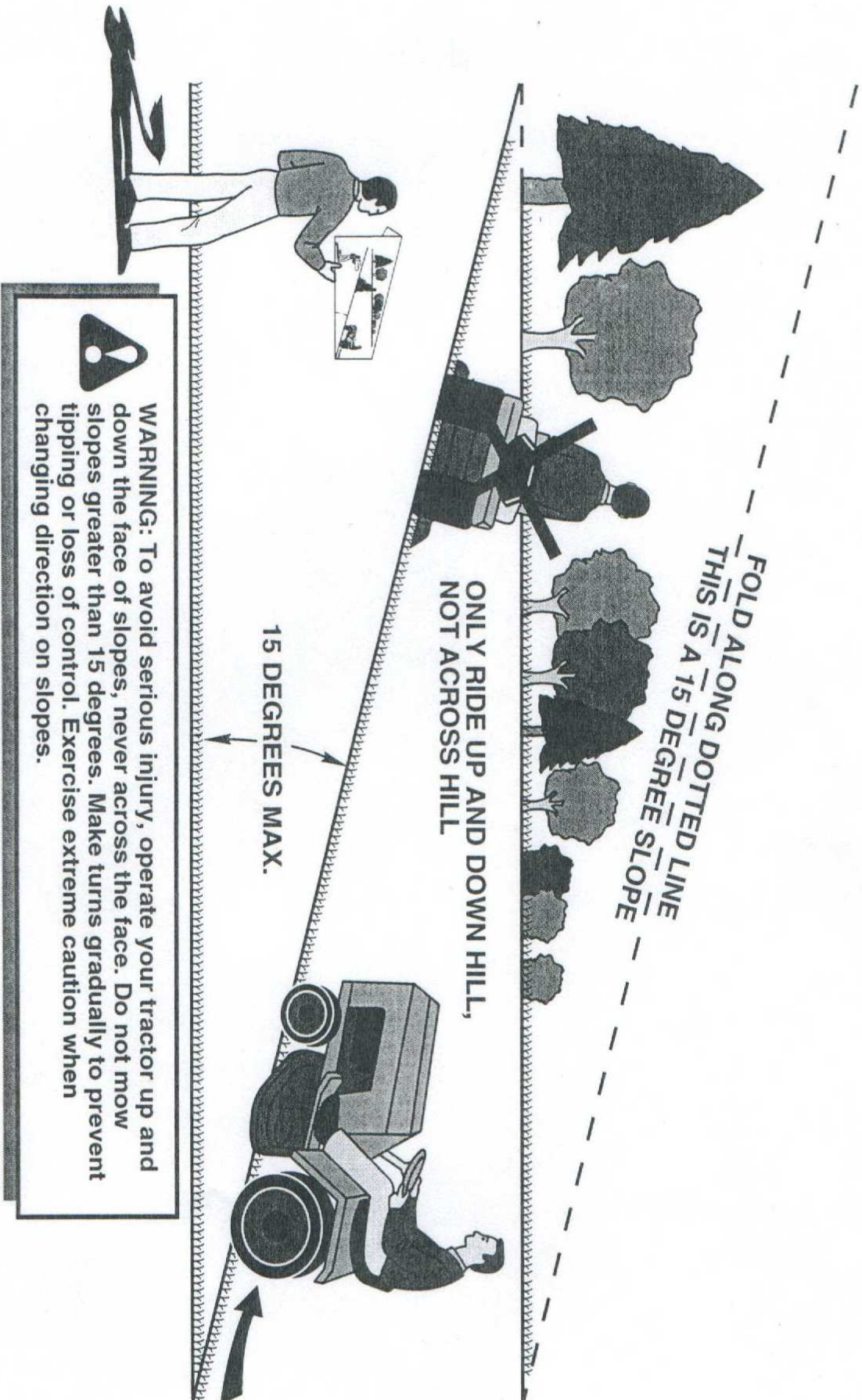
When ordering replacement parts

* = USE PAINT CODE: GT: GREY TK=BLACK

GATE OPERATION



SUGGESTED GUIDE FOR SIGHTING SLOPES FOR SAFE OPERATION



1. Fold this page along dotted line indicated above.
2. Hold page before you so that its left edge is vertically parallel to a tree trunk or other upright structure.
3. Sight across the fold in the direction of hill slope you want to measure.
4. Compare the angle of the fold with the slope of the hill.

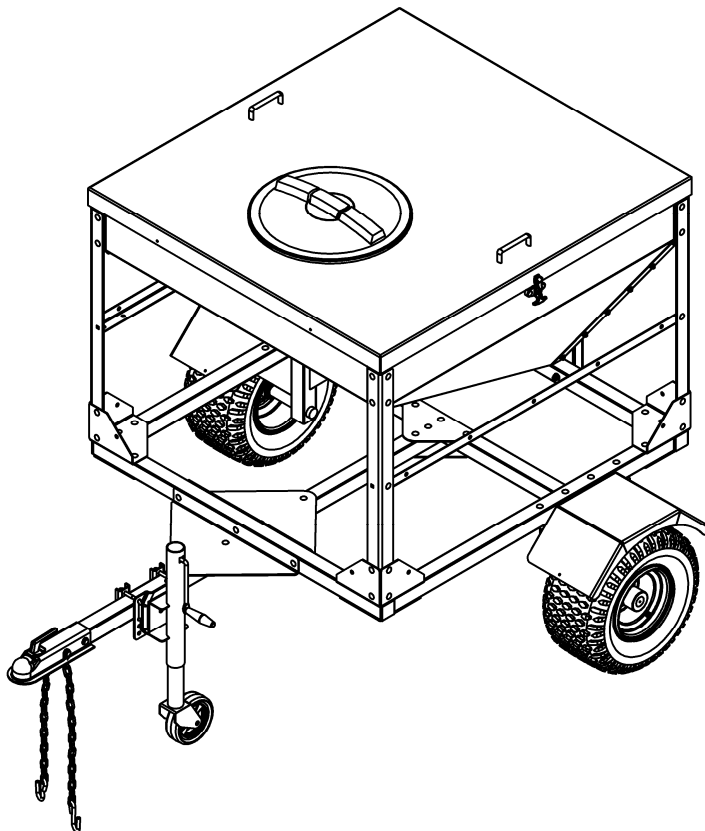
[illegible]

www.swisherinc.com

OWNER'S MANUAL

MODEL NO.

21550



IMPORTANT

Read and follow all
Safety Precautions
and Instructions
before operating this
equipment.

WHEN ORDERING PARTS, PLEASE HAVE THE
FOLLOWING INFORMATION AVAILABLE:

- * PRODUCT – 20 CUFT FEED BIN
- * SERIAL NUMBER - _____
- * MODEL NUMBER - _____
- * ENGINE MODEL NUMBER - _____
- TYPE - _____
- * PART NUMBER
- * PART DESCRIPTION

TELEPHONE - 1-800-222-8183

FAX - 1-660-747-8650

SWISHER ACQUISITION INC.

1602 CORPORATE DRIVE
WARRENSBURG, MO 64093

www.swisherinc.com

SWISHER®

CHANGING YOUR LANDSCAPE SINCE 1945