

OPERATOR’S MANUAL

GG-25PFC-D FUEL CART

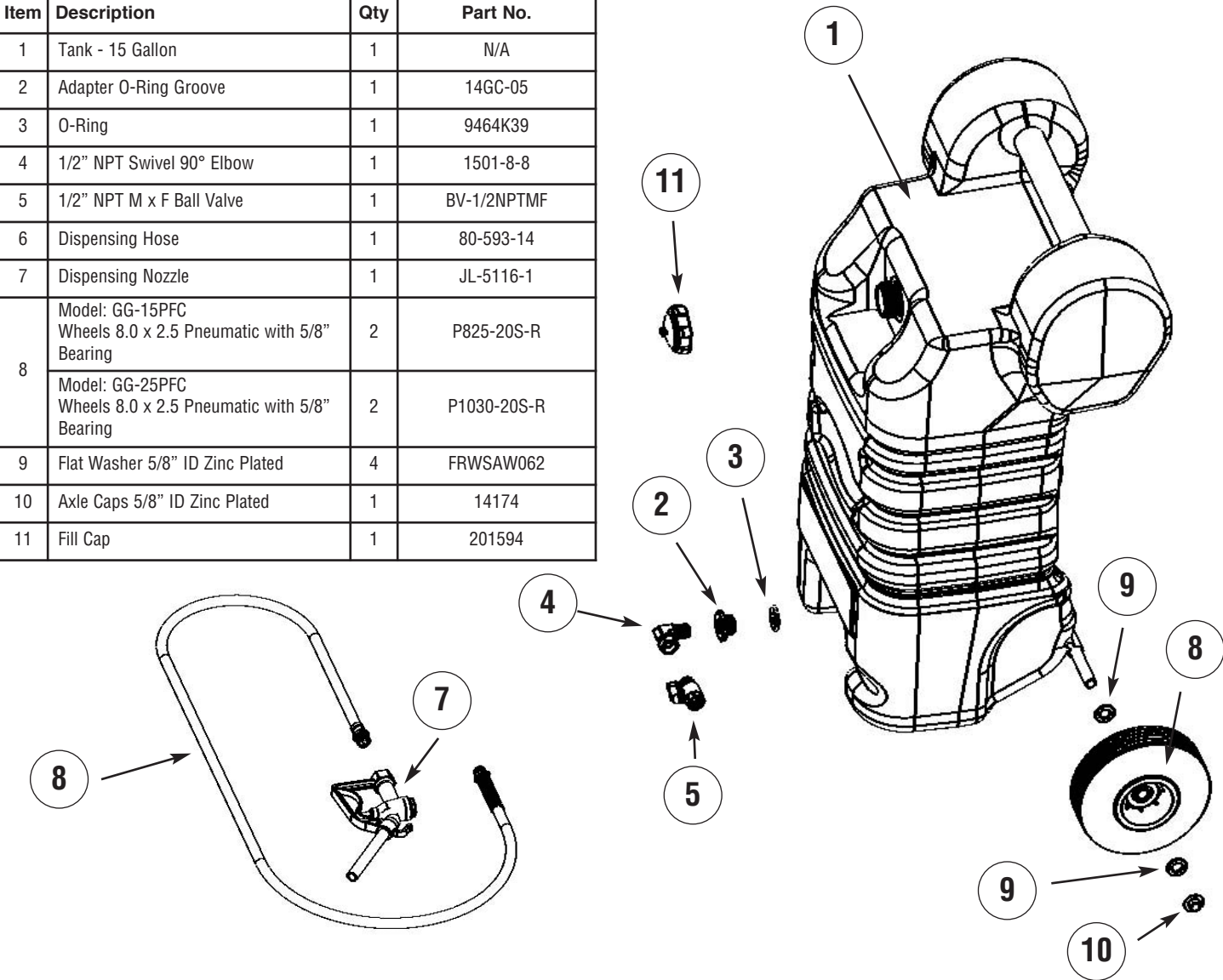
To load for transportation

1. Load the fuel cart onto a trailer or truck bed and place in horizontal position. **DO NOT** place inside a vehicle trunk or inside the passenger compartment.
2. Secure the container with proper restraining devices to prevent movement in all directions. Proper restraining devices include tie-down straps, cables or chains that are in good condition and strong enough to withstand the forces that may be encountered during transportation. There should not be any sharp edges in contact with the plastic tank. The restraining devices may be wrapped around the tank body in the grooved ribs or around the molded handle. **DO NOT** attach restraining devices to the ball valve, hose fittings, or fill cap.
3. It is the vehicle operator’s responsibility to comply with all federal, state, and local regulations for the transportation of gasoline, and including the use of placards where required.

Storage

1. It is the user’s responsibility to review and comply with all local and state building and fire codes regarding allowed quantity of fuel that may be stored and the approved storage locations.
2. Keep out of reach of children.
3. Store in well-ventilated area.
4. Keep away from flame, pilot lights, stoves, heaters, electric motors and other sources of ignition. **DO NOT** store inside a residence, living space or basement.
5. **DO NOT** store in an attached garage that is connected to residence or dwelling.
6. **DO NOT** store in vehicle passenger compartment or vehicle trunk.
7. **DO NOT** store in direct sunlight.

Item	Description	Qty	Part No.
1	Tank - 15 Gallon	1	N/A
2	Adapter O-Ring Groove	1	14GC-05
3	O-Ring	1	9464K39
4	1/2" NPT Swivel 90° Elbow	1	1501-8-8
5	1/2" NPT M x F Ball Valve	1	BV-1/2NPTMF
6	Dispensing Hose	1	80-593-14
7	Dispensing Nozzle	1	JL-5116-1
8	Model: GG-15PFC Wheels 8.0 x 2.5 Pneumatic with 5/8" Bearing	2	P825-20S-R
	Model: GG-25PFC Wheels 8.0 x 2.5 Pneumatic with 5/8" Bearing	2	P1030-20S-R
9	Flat Washer 5/8" ID Zinc Plated	4	FRWSAW062
10	Axle Caps 5/8" ID Zinc Plated	1	14174
11	Fill Cap	1	201594





Model: GG-25PFC-D

25-Gallon Diesel Fuel Cart

(UN/DOT Approved)
Operator’s Manual





151 Snyder Ave.
Barberton, OH 44203
www.johndow.com
customerservice@johndow.com

REV 06/15

OPERATOR’S MANUAL

GG-25PFC-D FUEL CART

INSTRUCTIONS PERTAINING TO THE RISK OR INJURY TO PERSONS.

IMPORTANT SAFETY INSTRUCTIONS. SAVE THESE INSTRUCTIONS.



READ THIS MANUAL CAREFULLY BEFORE INSTALLING,
OPERATING OR SERVICING THIS EQUIPMENT

It is the responsibility of the employer to place this information in the hands of the operator. Keep for future reference.



DANGER

Indicates an imminently hazardous situation which, if not avoided, will result in death or serious injury.

- Gasoline and other fuels are extremely flammable. Keep away from heat sparks and open flames as an explosion will result in severe personal injury.
- Gasoline vapors can explode. Avoid breathing fuel vapors.
- DO NOT siphon by mouth. Harmful or fatal if swallowed; if swallowed, DO NOT induce vomiting. Call a physician immediately.
- Ground ALL containers for extra safety by connecting the containers to a metal pipe or rod that is buried underground.
- DO NOT modify this tank or its componenets. All components and design features have been tested and approved for use for handling flammable fuel.
- DO NOT get back in vehicle whicle refueling re-entry could cause a static build up.
- Avoid excessive atitation, shaking, splashing or high flow rates as these can increase the risks of static charge build up.
- DO NOT use electronics or mobile communication devices such as mobile phones while dispensing or handling fuel.
- DO NOT smoke near or while using this gas caddy.
- Secure or strap container to trailer or truck bed. DO NOT store inside vehicle, living space or direct sunlight. Store and use in a well ventilated area.
- Keep container closed when not in use.
- Keep nozzle in contact with the container while filling. DO NOT use nozzle lock-open device.



WARNING

Indicates a potentially hazardous situation which, if not avoided, mayh result in death or serious injury.

- Obtain Material Safety Data Sheets on fuels being handled. Always wear required proper personal protection equipment and clothing.
- Place container in horizontal position on ground when filling.
- When using this product basic precautions should always be followed, including the following:
 - Read ALL instructions before using this product.
 - To reduce the risk of injury, close supervision is necessary.
 - Keep out of reach of children.
 - DO NOT put fingers or hands into openings or into the pump.
- Ensure that all fittings and threaded hose and pipe connections are tightened and leak free.
- If fire starts, DO NOT remove nozzle. Back away immediately.



CAUTION

Indicates a potentially hazardous situation which if not, avoided, may result in minor or moderate personal injury. It may also warn of unsafe practices.

- Be certain all operators of the equipment have been trained for safe working practices and understand its limitations.
- Use Caddy for “one type of fuel only” to avoid possible damage to vehicle.
- Use care when maneuvering to prevent injury or loss of control. Seek assistance to avoid strain or injury when required.
- Monitor flow rate and fill levels to prevent overflows and spills. DO NOT overfill containers, drums or tanks.
- Perform the entire closure procedure before using the fuel cart to transport fuel.
- Regulations for the transportation of gasoline vary from state to state, even locally. It is the vehicle operator’s responsibility to review and comply with all federal, state and local regulations.
- Review and comply with all building and fire codes concerning proper storage of fuel. It is the owner’s/user’s responsibility to comply with all building and fire codes.

Capacity and Dimensions:

Fill capacity vertical: 25.0 gal. (94,6 liter)*
Fill capacity horizontal: 22.5 gal. (85,1 liter)*
Maximum volume of tank: 29.5 gal. (112,1 liter)
*when filled to just below the bottom of filler neck

Tare Weight: 32.0 lbs (14,55 kg)
Gross Weight (25 gal of fuel): 192.0 lbs (87,1 kg)*
Dimensions (horizontal): 43 (L) x 23 (W) x 18 (H)

OPERATOR’S MANUAL

GG-25PFC-D FUEL CART

Assembly Instructions

- Assemble the 1/2 inch threaded end of the hose (A) into the valve as shown. **DO NOT** use any pipe sealant or tape on this connection. The rotating nut on the 90° elbow will pull the valve against a metal cone seat to creating the seal. Tighten.
- Wrap the ¾ inch pipe fitting end of hose (B) with PTFE tape or apply pipe sealant. Assemble into the dispensing nozzle and tighten.
- The tires are not inflated prior to shipment. Inflate both tires to 15 psi (1.0 bar) before using.

To fill container

- Confirm the filling location is safe and away from all sources of ignition, sparks, and flames.
- Place the fuel cart container on the ground in horizontal position (valve and fill cap up) away from vehicle before filling. Placing the container on the ground allows a path for static charge to dissipate.
- Dissipate any static electricity by touching a metal surface away from the nozzle prior to removing nozzle from dispensing pump
- Remove fill cap and insert service station dispensing nozzle into the filler neck opening.
- Keep the service station dispensing nozzle in contact with the container opening while filling. **DO NOT** use nozzle lock-open device. **DO NOT** re-enter vehicle while filling your fuel cart or while refueling your vehicle. Re-entry could cause a static build up.
- Fill slowly to prevent the build up of static charges. Stop immediately if you sense the build up of static charges (sensation of hair raising or tingling of parts of body). **DO NOT** resume filling until static charges dissipate.
- Closely monitor flow to prevent spills and overfilling the container.
- Do not fill above the bottom of the threaded filler neck.
- Reinstall the fill cap.
- Wipe any residual fuel from outside of tank or allow to evaporate.

To dispense from container

- Position tank in upright vertical position.
- Slowly crack open fill cap to vent any internal pressure.
- Open the ball valve handle clockwise as shown to be inline with the flow in the hose.
- Place tip of nozzle into container that is being filled. The nozzle must remain inside the container while dispensing.
- Fuel is gravity dispensed through nozzle. Squeeze handle to begin flow, release to stop.
- Monitor flow and liquid level to prevent spills.
- When finished drain remaining fuel back into the tank per the instructions below.

To drain fuel from hose back into the container

- Lay fuel cart in horizontal position (valve and fill cap up).
- Elevate the nozzle above the hose, and slope the hose back to the valve to provide a clear path for fluid to drain.
- With the nozzle above the hose, squeeze the handle of the nozzle to allow hose to vent and fuel to drain back into the tank.
- Close the ball valve.

To close for transportation or storage

Return all fuel from hose back into tank per above instructions.

- Close the tank
 - Close ball valve by turning the handle until it stops in 90° position as shown. This indicates that the ball valve is in the closed position.
 - Turn fill cap in direction as shown until the cap seats on tank, then turn an additional 1/4 turn.
 - Turn manual vent in direction as shown until closed, then turn an additional 1/4 turn.

