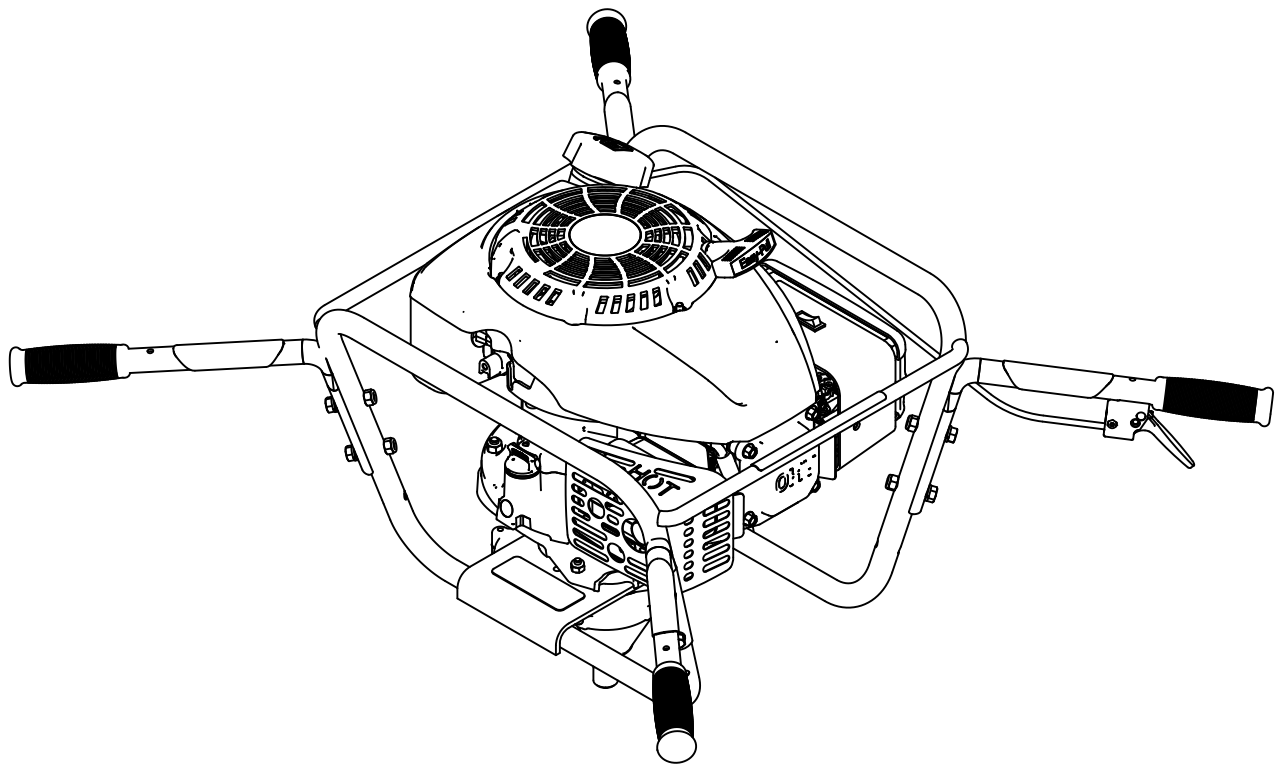




Illustrated Parts Breakdown
**Two-Man
Earth Auger Powerhead
9800K**

SN



Get parts online at
www.getearthquake.com

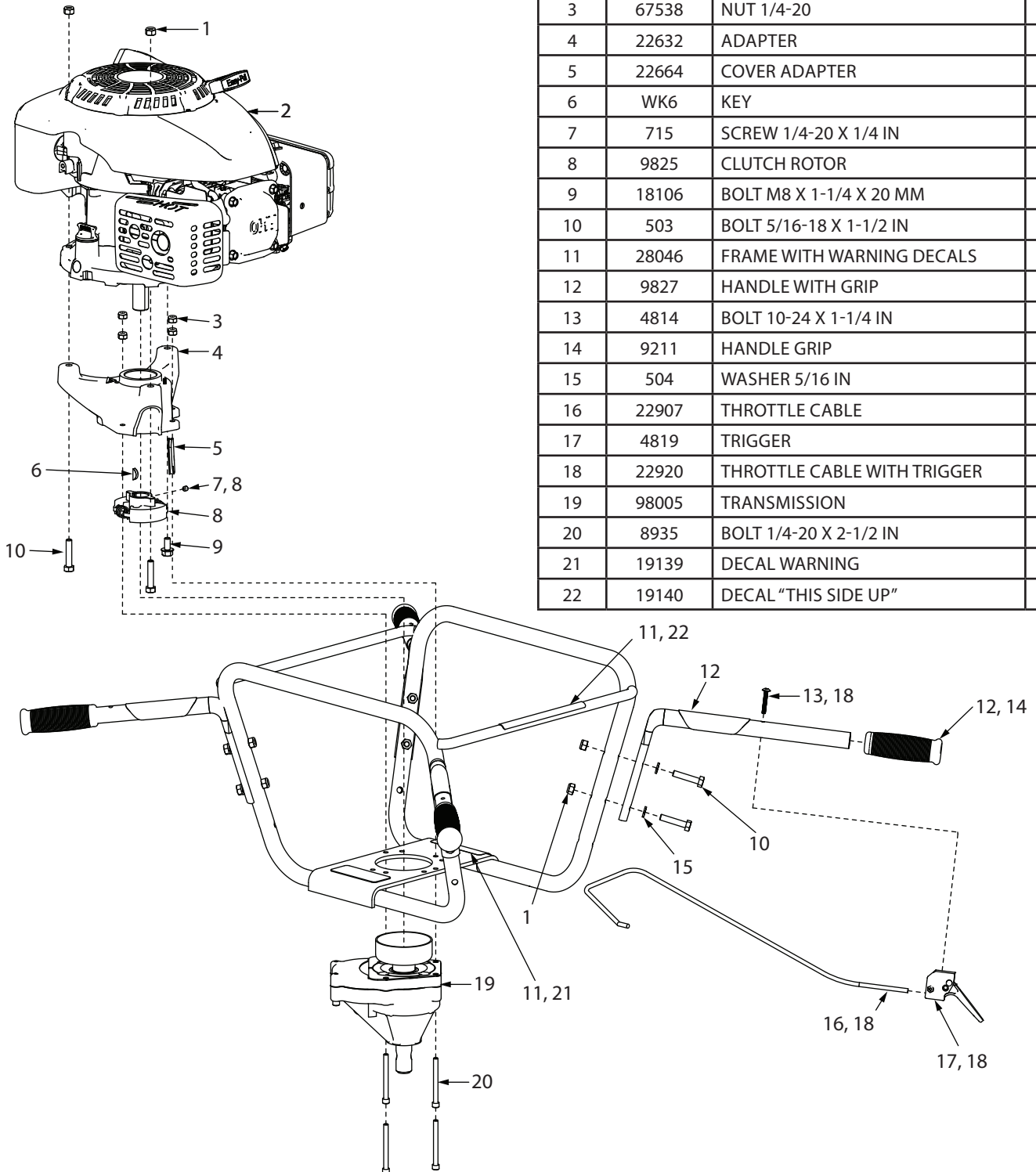


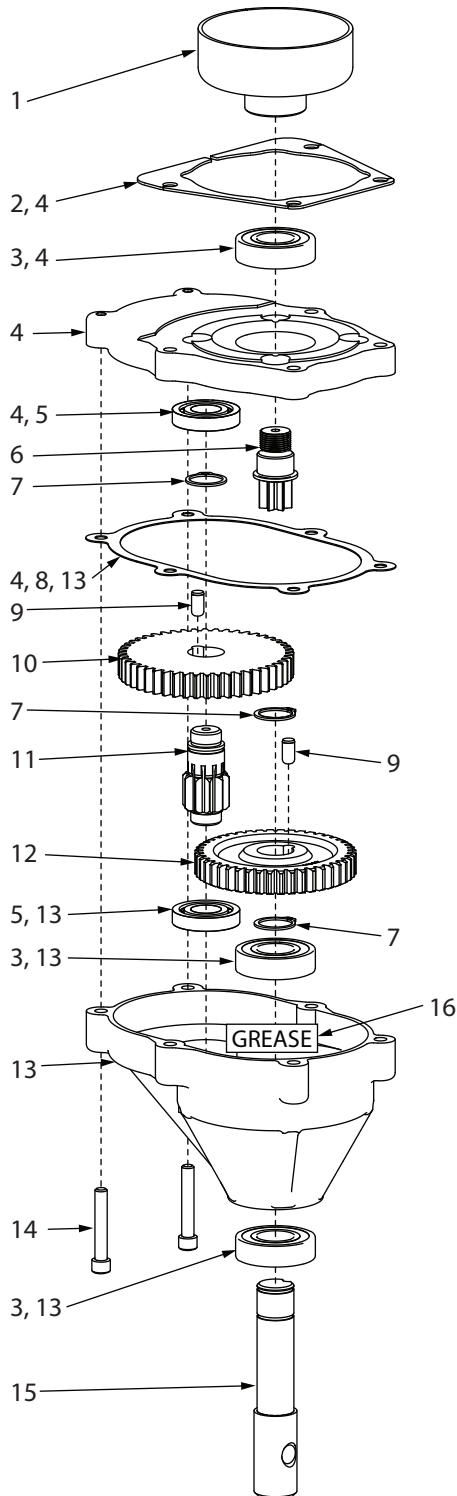
P/N: 30010
ECN: 11899
REV1: 2017-11-21
© 2017 Ardisam, Inc.
All Rights Reserved

Powerhead Parts Breakdown

* For engine parts, contact Kohler via
www.kohlerengines.com or at 1-800-544-2444

ITEM NO.	PART NO.	DESCRIPTION	QTY
1	60G5NY	NUT 5/16-18	10
2	*	KOHLER XT775 VERTICAL ENGINE	1
3	67538	NUT 1/4-20	4
4	22632	ADAPTER	1
5	22664	COVER ADAPTER	1
6	WK6	KEY	1
7	715	SCREW 1/4-20 X 1/4 IN	1
8	9825	CLUTCH ROTOR	1
9	18106	BOLT M8 X 1-1/4 X 20 MM	1
10	503	BOLT 5/16-18 X 1-1/2 IN	10
11	28046	FRAME WITH WARNING DECALS	1
12	9827	HANDLE WITH GRIP	4
13	4814	BOLT 10-24 X 1-1/4 IN	1
14	9211	HANDLE GRIP	4
15	504	WASHER 5/16 IN	8
16	22907	THROTTLE CABLE	1
17	4819	TRIGGER	1
18	22920	THROTTLE CABLE WITH TRIGGER	1
19	98005	TRANSMISSION	1
20	8935	BOLT 1/4-20 X 2-1/2 IN	4
21	19139	DECAL WARNING	1
22	19140	DECAL "THIS SIDE UP"	1



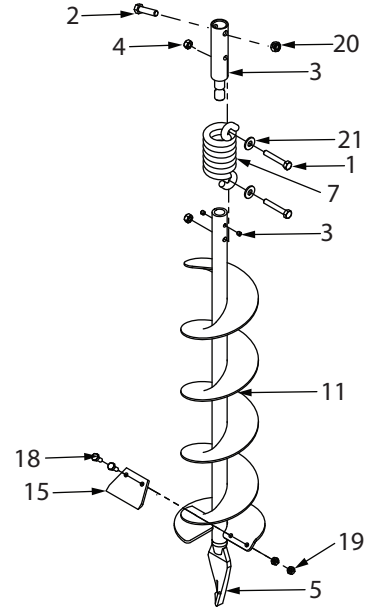
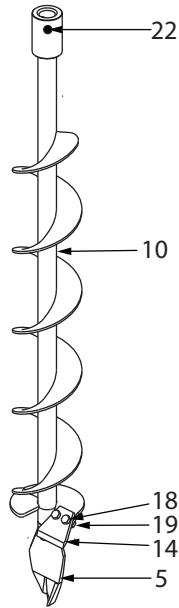
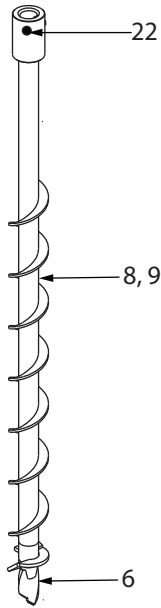


17
22912
MANUAL BAG

18
21922
PARTS BAG

Transmission Parts Breakdown

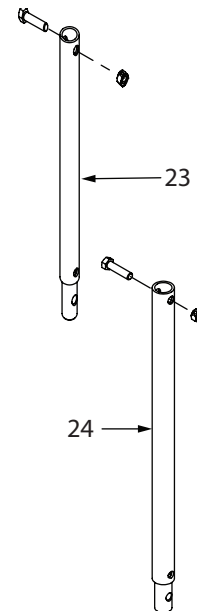
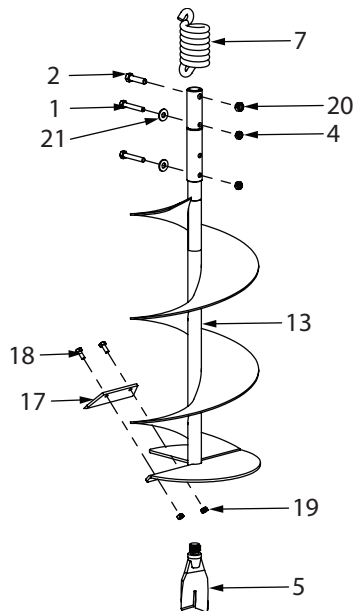
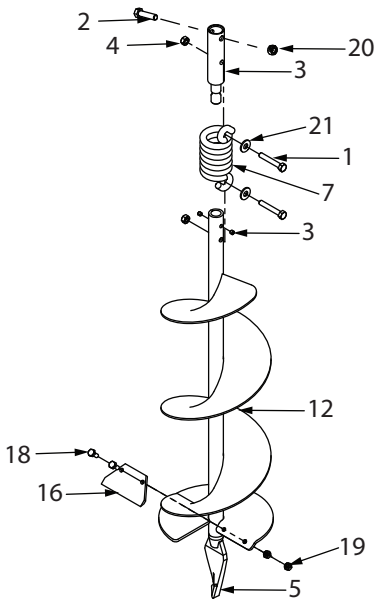
ITEM NO.	PART NO.	DESCRIPTION	QTY
1	9016	CLUTCH DRUM	1
2	3004149	SHIM TRANSMISSION	1
3	8922	BEARING R12 X 3/4 IN	3
4	75300	TRANSMISSION TOP	1
5	8923	BEARING R10 X 5/8 IN	2
6	9814	GEAR 7T	1
7	8924	RING 3/4 IN	3
8	8919	GASKET	1
9	8915	DOWEL PIN 1/4 X 1/2 IN	2
10	8914	GEAR 48T	1
11	9214A	GEAR 10T	1
12	8912	GEAR 44T	1
13	75600	TRANSMISSION LOWER	1
14	8929	BOLT 1/4-20 X 1-1/2 IN	2
15	8913	OUTPUT SHAFT	1
16	11468	GREASE EP2 MOLYBDENUM	1
17	22912	MANUAL BAG	1
18	21922	PARTS BAG	1



Optional Accessory:
EA2F, EA3F

Optional Accessory:
EA4F

Optional Accessory:
EA6F



Optional Accessory:
EA8F

Optional Accessory:
EA10F

Optional Accessory:
EXT12, EXT18

Optional Accessories

ITEM NO.	PART NO.	DESCRIPTION	QTY
1	1423	BOLT 5/16-18 X 2 IN	2
2	1433	BOLT 3/8-16 X 1-1/2 IN	2
3	22142	SHOCK TOP WITH SCREWS	1
4	60G56	NUT 5/16-18	2
5	8958HD	FISHTAIL POINT	1
6	8970	EARTH POINT	1
7	8980	SHOCK SPRING	1
8	EA2F	EARTH AUGER 2 IN WITH POINT	1
9	EA3F	EARTH AUGER 3 IN WITH POINT	1
10	EA4F	EARTH AUGER 4 IN WITH POINT	1
11	EA6F	EARTH AUGER 6 IN WITH POINT	1
12	EA8F	EARTH AUGER 8 IN WITH POINT	1
13	EA10F	EARTH AUGER 10 IN WITH POINT	1
14	EB4	EARTH BLADE 4 IN	1
15	EB6	EARTH BLADE 6 IN	1
	EB6HD	EARTH BLADE (HEAVY DUTY) 6 IN	1
16	EB8	EARTH BLADE 8 IN	1
	EB8HD	EARTH BLADE (HEAVY DUTY) 8 IN	1
17	EB10	EARTH BLADE 10 IN	1
	EB10HD	EARTH BLADE (HEAVY DUTY) 10 IN	1
18	EBOLT	BOLT 1/4-28 X 5/8 IN	2
19	ENUT	NUT 1/4-28	2
20	2104	NUT 3/8-16	2
21	WF516	WASHER 5/16 IN	2
22	8955	BOLT 3/8-16 X 1-1/4 IN	1
23	EXT12	EXTENSION 12 IN	1
24	EXT18	EXTENSION 18 IN	1



Earthquake[™], Division of Ardisam, Inc.
1160 8th Avenue, PO Box 666
Cumberland, WI 54829
800-345-6007 | Fax 715-822-4180

All weights, specifications and features are approximate and are subject to change without notice. Due to continuous product improvements, product images may not be exact. Items used for props not included. Some assembly may be required.

Check for parts online at www.getearthquake.com or call 800-345-6007 Mon-Fri 8 AM - 5 PM CST