

10' FIELD BUNK FEEDER



	EXTERIOR	INTERIOR
DEPTH		10.5"
WIDTH	29"	24"
HEIGHT	21"	
LENGTH	10'	9' 6"

WEIGHT : 1710 LBS.

10' LINE FEEDER



	EXTERIOR	INTERIOR
DEPTH		10.5"
WIDTH	29"	24"
HEIGHT	21"	
LENGTH	10'	10'

WEIGHT : 1660 LBS.

8' SMALL J FEEDER



	EXTERIOR	INTERIOR
DEPTH		FRONT:11" REAR: 23"
WIDTH		18"
HEIGHT	FRONT 17" REAR 29"	
LENGTH	8'	8'

WEIGHT : 1525 LBS.

8' WIDE J FEEDER



	EXTERIOR	INTERIOR
DEPTH		FRONT:14.5 REAR :21"
WIDTH		28"
HEIGHT	FRONT 24" REAR 31"	
LENGTH	8'	8'

WEIGHT : 1900 LBS.

8' SILAGE FEEDER



	EXTERIOR	INTERIOR
DEPTH		20"
WIDTH	31"	25"
HEIGHT	26"	
LENGTH	8'	8'

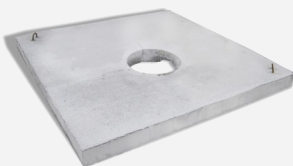
WEIGHT : 1975 LBS.

FEEDER ENDS



PRE-MOLDED ENDS
AVAILABLE FOR ALL
FEEDERS

5' & 6' WATER PAD



	5' PAD	6' PAD
DEPTH	4"	6"
WIDTH	5'	6'
HEIGHT	5'	6'

WEIGHT:
5' — 1130 LBS.
6' — 2300 LBS.

CONCRETE CATTLE GUARD



DEPTH	12" EACH SECTION
LENGTH	4'X 7'

WEIGHT : 1900 LBS