

WARNING

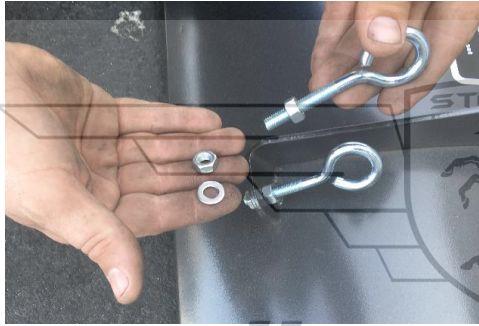
Wear proper eye protection during the uncrating and installation process to avoid potential eye injuries.

Assembly Instructions

1 – Blade Assembly

The blade is shipped disconnected from the push A-arm and requires installation

- Install the two Gravel skids at the bottom of the blade as it shown in figure 1.
- Install the two Eye bolts behind the blade as it shown in figure 2.



2 – A-arm Assembly

The A-arm comes pre-assembled and only needs to install the stopper bolts.

- Install the stopper bolts to A-arm as it shown in figure 3.
- Tighten the bolts and nuts with an 8mm Allen wrench and 12mm wrench



Fig. 3



Fig. 3b

3 – Blade mounting to A-arm

The blade assembly will need to be mounted to the push A-arm as follows:

- Align push tube and blade as it shown in figure 4
- Make sure the smaller washer goes in to the blade as it shown in figure 5.



Fig. 4

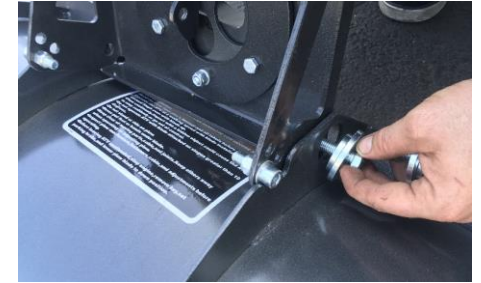


Fig. 5

4 – Installing the springs

Install the springs from the push bar to eye bolt on snow blade

- Put the spring hook in to the A-arm hole as it shown in figure.6
- With a set of pliers pull the spring as it show in figure 7.



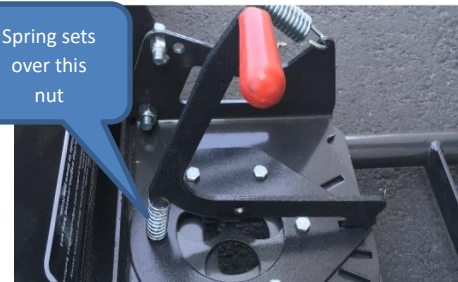
Fig. 6



Fig. 7

5 – Installing the handle

Spring sets over this nut



Place small spring under the handle

Insert the roller pin



Place the handle on the A-arm

WARNING Before installing the attachment, place the UTV on a firm and level surface. Set the parking brake, shut engine off and remove the key to

- Fully Assembled Snow Plow attachment

After following the instructions you should have a fully assembled Snow plows attachment ready to be mounting in to your UTV.



6 – Mounting the snow plow to the UTV

Please locate the mounting brackets under the UTV, and align the A-arms

- Align the A-arm or pus bars with your UTV as it shown in figure 8.
- Locate the mounting brackets as it shown in figure 9.



Fig. 8



Fig. 9

7 – Securing the Snow plow

With the Shear pin secure the A-arm or push bar to the UTV.

- Get your Shear Pins ready as it shown in figure 10.
- Insert the Pins to secure the snow plow to the UTV as it shown in figure 11.

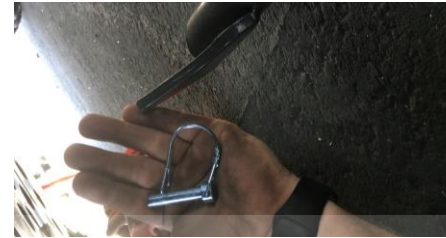


Fig. 10



Fig. 11

8 – Installing the Winch Cable.

- Remove the roller pin and run the winch cable through the roller as it shown in figures 11-13.



Fig. 11



Fig. 12



Fig. 13



you are now ready to use the snow plow

TOOLS REQUIRED

- 8mm Allen Wrench
- 12mm Wrench
- 14mm Wrench
- 17mm Wrench
- 19mm Wrench
- Needle nose pliers

PARTS LISTING

- A. 60 inch Snow Blade
- B. Trip Spring
- C. A-arm Brackets
- D. Handle Spring
- E. Shear Pin
- F. Winch Cable roller
- G. Gravel Skids
- H. Stopper Bolts
- I. Eye Bolts
- J. Pivot bolts & washer
- K. Rotation Lever

SPECIFICATION

- 60" Snow Plow
- Heavy-duty steel blade
- 45 Degree Pivot
- Winch Operated

