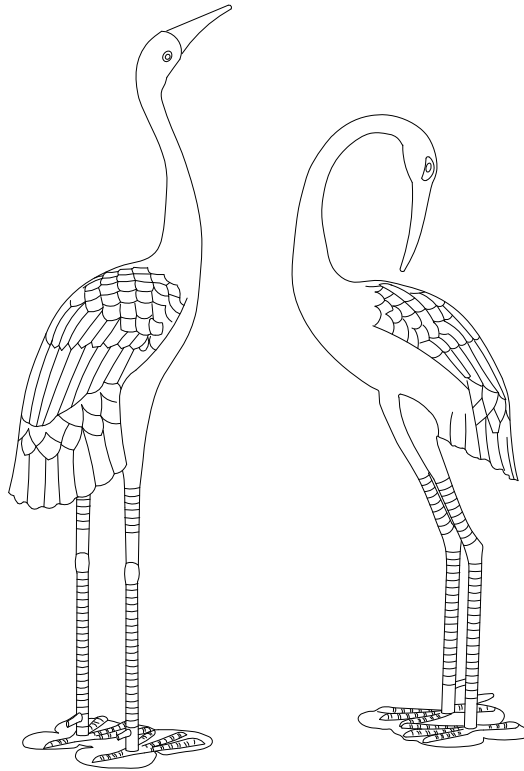


# ASSEMBLY INSTRUCTIONS

## ITEM# L-GF002PCA



**NOTE:**



For safety and stability purposes, this item is intended for use with the ground stakes, well secured into the ground.


**CARE INSTRUCTIONS:**

Clean gently with environmentally-friendly soap solution and water using a sponge. Do not use abrasive materials, wire brushes, chemicals, cleansers or bleach. Do not use a pressure washer. Rinse well. Allow to air dry.

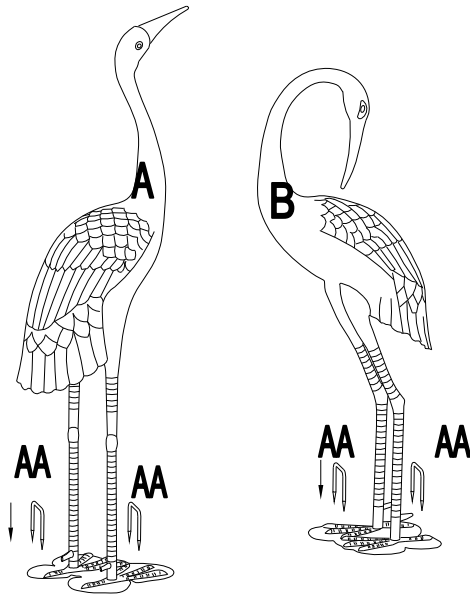
If there are nicks, chips and scratches, go to your local hardware store or home center and obtain a closest match touch-up paint suitable for outdoor metal use. Follow instructions that come with the paint.

**Important:** For technical assistance on assembly or replacement parts, please call Sunjoy Industries at 1(866) 578-6569 from 8:00 AM EST to 8:00 PM PST. You may email to [customer.care@sunjoygroup.com](mailto:customer.care@sunjoygroup.com) or visit [www.sunjoyonline.com](http://www.sunjoyonline.com) to place your order or fax your parts replacement order form (which is included in the packaging) together with your purchase receipt to 1 (740) 283-3549 for assistance.

Parts List			
Part#	Description	QTY	Image
A	Crane with head up	1	
B	Crane with head down	1	

Parts List			
Part#	Description	QTY	Image
AA	Stake 50x135xD6mm	4	

**ASSEMBLY STEPS:**



1. Choose a level location for set up. It is recommended that you choose a location that can accommodate ground stakes.
2. Place Crane in desired location.
3. Insert 2 ground stakes (included) through the holes on feet (1 at the front & 1 at the back) to secure Crane (A). Repeat this step for the other crane.
4. If necessary, use a rubber mallet to completely secure the ground stakes into the ground.
5. Depending upon soil conditions, adjusting stakes from time-to-time may be required.