

WELDED HYDRAULIC CYLINDERS



CHIEF®

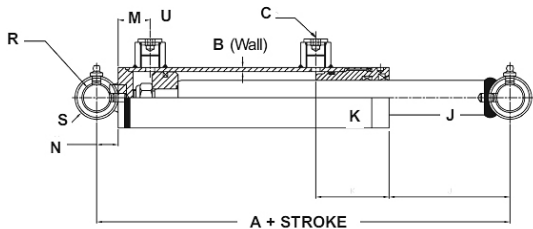
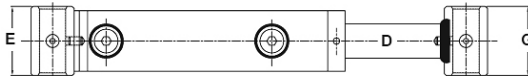
CHIEF™ LD LOADER CYLINDERS

The CHIEF™ LD 3000 PSI is our small bore welded cylinder designed for light duty loaders. The rod and base ends are welded cross-tubes with grease zerk. The ductile iron piston utilizes a wear ring to protect the seal from wear. Ideal for construction, agricultural and other applications.

Every CHIEF™ LD cylinder is functionally tested and pressurized to 1.5 times the normal working pressure to ensure performance reliability. LD cylinders are available in bore sizes from 1.5" to 3", strokes from 12" to 24", and have a 3,000 PSI operating range. The CHIEF™ LD has a 3 year limited warranty and is manufactured at Bailey's ISO 9001:2000 certified facility.

3000 PSI

DESCRIPTION



Intended Use: Double-acting applications • **Piston:** Ductile iron • **Gland:** Ductile iron • **Tube:** Honed steel • **Rod:** Hard chrome plated • **End Mounts:** Cross-tubes • **Tube Seal:** Buna O-ring with Polytemp hytrel back-up • **Rod Seal:** Polyurethane u-cup • **Rod Wiper:** Polyurethane, snap-in • **Piston Seal:** 755 with wear rings, (2 ea.) wear bearings • **All Seals:** Manufactured to USA specifications • **Ports:** SAE O-rings • **Paint:** Black Custom colors are available. • **Packaging:** Individually poly bagged.

Dimensional Data in Inches (Millimeters)

BORE	DIMENSIONS												
	A	B	C	D	E	G	J	K	M	N	R	S	U
1.500	8.000	0.188	SAE 6	1.000	2.000	2.000	3.507	2.125	0.930	0.625	0.765	1.250	0.750
(38.10)	(203.2)	(4.78)	SAE 6	(25.40)	(50.80)	(50.80)	(89.08)	(53.98)	(23.62)	(15.88)	(19.43)	(31.75)	(19.05)
1.750	Varies	0.188	SAE 6	1.000	2.125	3.000	Varies	1.875	0.123	0.750	1.016	1.500	1.000
(44.45)	Varies	(4.78)	SAE 6	(25.40)	(53.98)	(76.20)	Varies	(47.63)	(28.52)	(19.05)	(25.81)	(38.10)	(25.40)
2.000	Varies	0.188	SAE 6	1.250	2.382	2.756	Varies	1.875	0.974	1.000	1.264	2.000	1.000
(50.80)	Varies	(4.78)	SAE 6	(31.75)	(60.50)	(70.00)	Varies	(47.63)	(24.74)	(25.40)	(32.11)	(50.80)	(25.40)
2.250	Varies	0.188	SAE 8	1.500	2.630	3.500	Varies	2.000	1.140	1.000	1.264	2.000	1.000
(57.15)	Varies	(4.78)	SAE 8	(38.10)	(66.80)	(88.90)	Varies	(50.80)	(28.96)	(25.40)	(32.11)	(50.80)	(25.40)
2.500	Varies	0.188	SAE 8	1.500	2.870	3.504	Varies	2.000	1.040	1.000	1.264	2.000	1.000
(63.05)	Varies	(4.78)	SAE 8	(38.10)	(72.90)	(89.00)	Varies	(50.80)	(26.42)	(25.40)	(32.11)	(50.80)	(25.40)
2.750	13.875	0.200	SAE 8	1.750	3.130	3.500	8.250	2.190	1.260	1.000	1.264	2.000	1.000
(69.85)	(352.43)	(5.08)	SAE 8	(44.45)	(79.50)	(88.90)	(209.55)	(55.63)	(32.00)	(25.40)	(32.11)	(50.80)	(25.40)
3.000	8.875	0.188	SAE 8	1.750	3.386	3.504	2.254	2.187	1.254	1.000	1.264	2.000	1.000
(76.20)	(225.43)	(4.78)	SAE 8	(44.45)	(86.00)	(89.00)	(82.65)	(55.55)	(31.85)	(25.40)	(32.11)	(50.80)	(25.40)

CUSTOM QUOTES ONLINE AT BAILEYOEMSOLUTIONS.COM