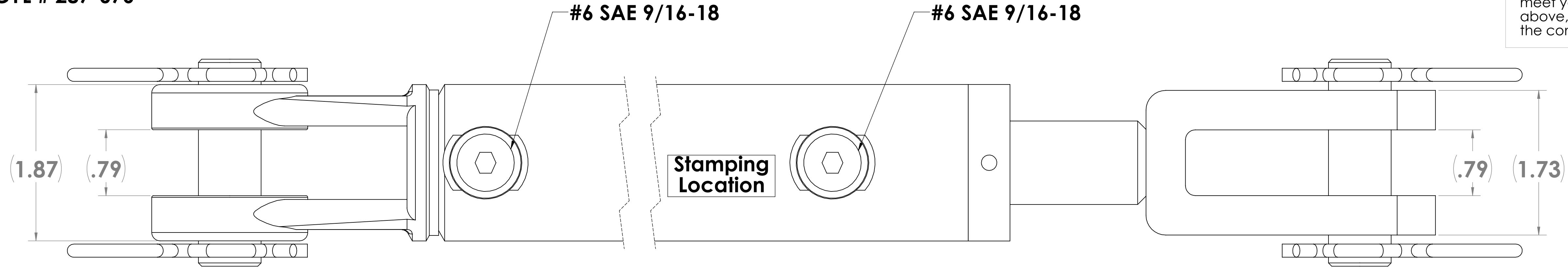


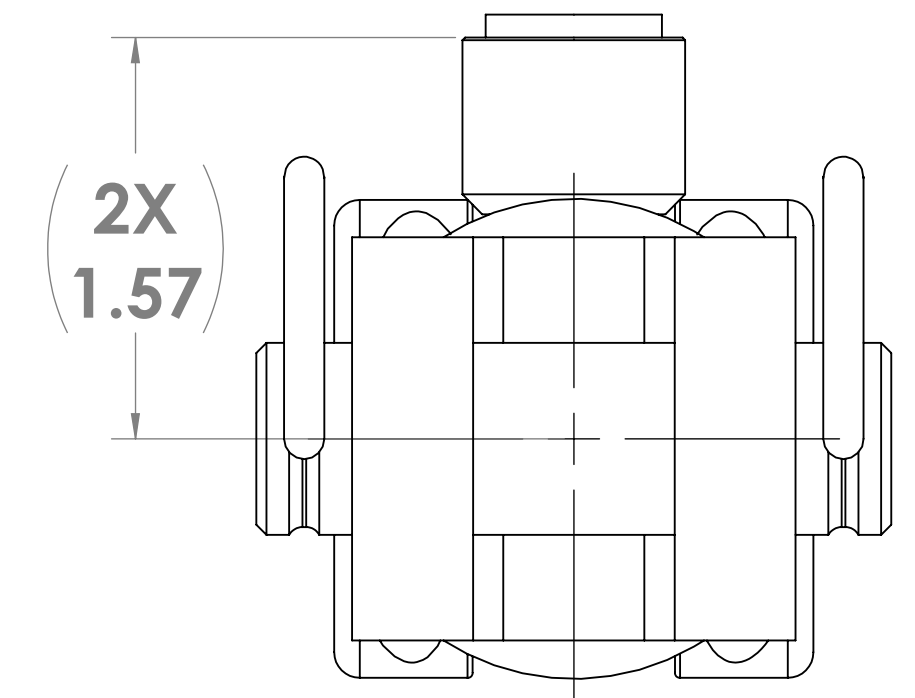
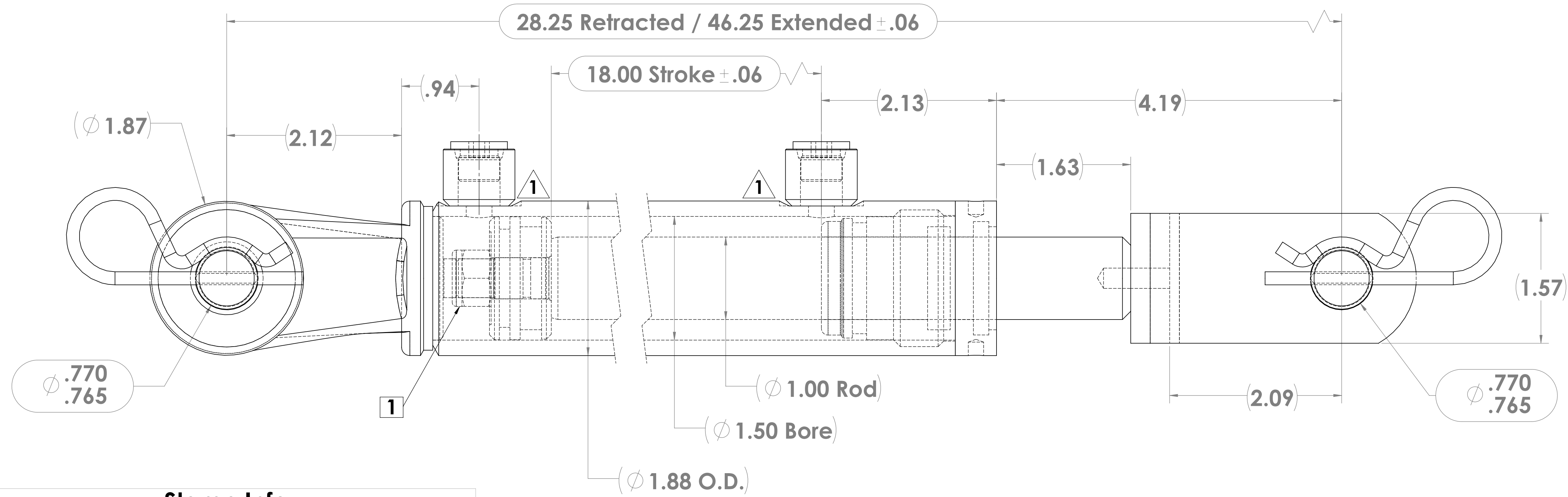
CYL # 287-076



Approval Signature _____
 Print Name _____ Date _____

ATTENTION CUSTOMER: Bailey International LLC can only guarantee the cylinder details in this drawing to be right and correct for your needs based on your original input AND your feedback from a detailed review of the Bailey International LLC design quote. This drawing and all details need to be reviewed by you, the customer. When you are satisfied that the cylinder will meet your needs of form, fit and function, please complete the information above, giving your approval to Bailey to build the cylinder as drawn. Return the completed form to your Bailey representative for processing.

NOTES:
1 Piston Nut Torque (ft-lbs): 40



xxxx Stamp Info xxxx
 Customer No: X BMC No: 287-076
 BM (JOB #) MM/YY

NOTE: Chrome Plated Steel Rod

XXXXX SPECIFICATIONS AND MACHINE NOTES: XXXXX

Retracted(in): 28.25 Tube C/L: Rod C/L:
 Extended(in): 46.25 Tube F/L: Rod F/L:

Working Pressure(psi): 3000 Stem No.:
 Proof/Test Pressure(psi): 4500 Tube No.:

Max Pull Load(lbf): 3976 lbs @ 3000 psi Base Drill:
 Max Push Load(lbf): 5301 lbs @ 3000 psi Gland Drill:

THIRD ANGLE PROJECTION	Approximate Weight (LBS)	15.4999	Name:	1.5 x 18 x 1 WC Cylinder
	PART NO:		Part #:	287-076
	PAINT:	Black	Customer name	BAILEY INTERNATIONAL LLC
	Date	8-28-2013	Name	DBK
	APPD		SIGN.	
1	A6,D6	11/14/14	2 X Added C'Bore to Ports And Update Port Hole Size	
REV	LOC	DATE	OLD	NEW



Bailey International LLC
 2527 WestCott Blvd.
 Knoxville, TN 37931
 TEL: 865-588-6000
 FAX: 865-588-6001
 www.bailey.net.com

THE INFORMATION CONTAINED IN THIS DRAWING IS THE SOLE PROPERTY OF BAILEY INTERNATIONAL LLC. ANY REPRODUCTION IN PART OR AS A WHOLE WITHOUT THE WRITTEN PERMISSION OF BAILEY INTERNATIONAL LLC IS PROHIBITED.