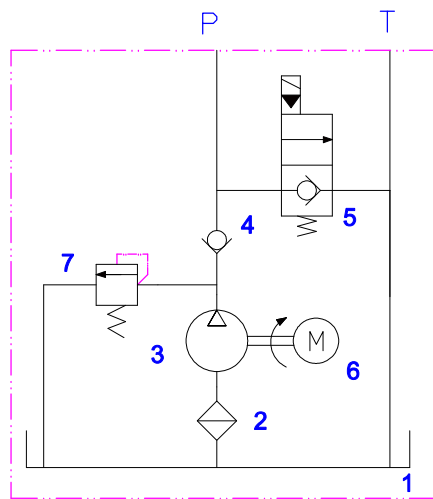
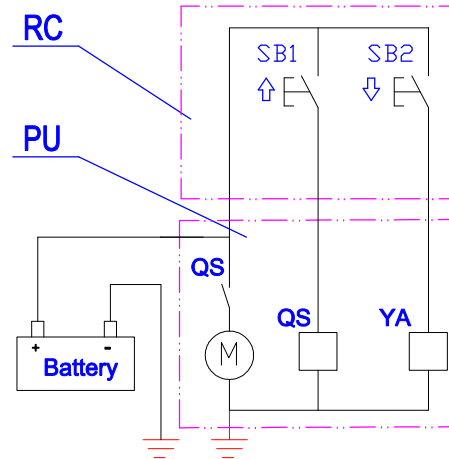


Section A-A

NAME: HYDRAULIC POWER UNIT
 PART NUMBER:
 DESIGN:
 REV: 0 DATE: Jun.10 2008
 CUSTOMERS PART#:

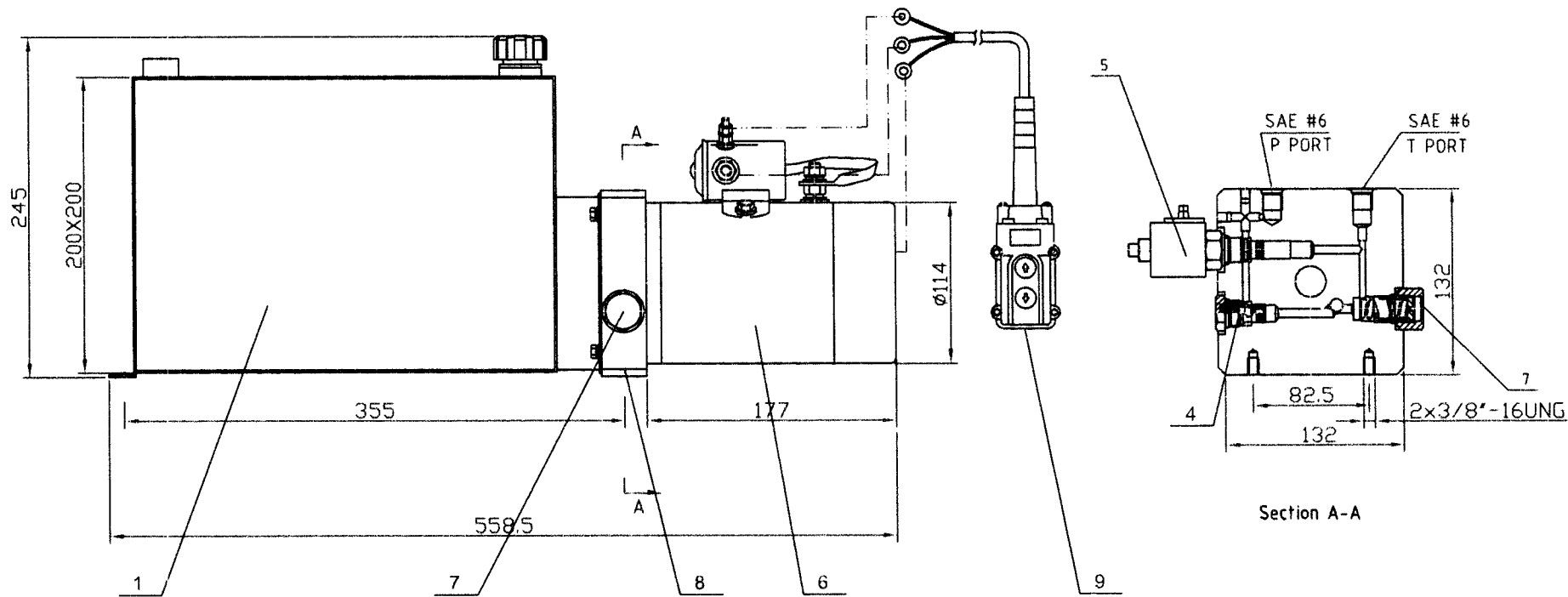


Hydraulic Schematic



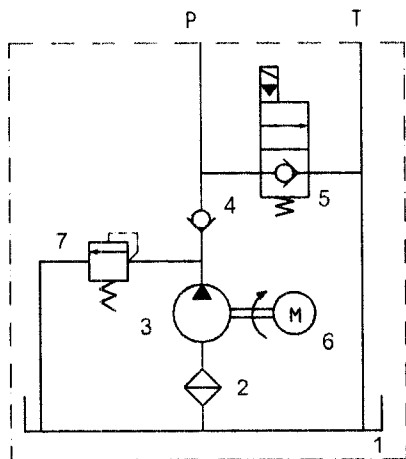
Electric Schematic

9	Remote Control	2 Botton, 3 Lines, 10 feet long
8	Manifold	
7	Relief Valve	Relief Pressure 2800 PSI
6	DC Motor	2.0 HP,12V, 2600RPM, S3 duty
5	Solenoid Release Valve	12VDC, NC
4	Check Valve	
3	pump	CBK-F2.1F, 0.128 Cu.In/Rev
2	Suction filter	
1	Tank	Steel, 12 Qt, Horizontal
NO.	Description	Technica data

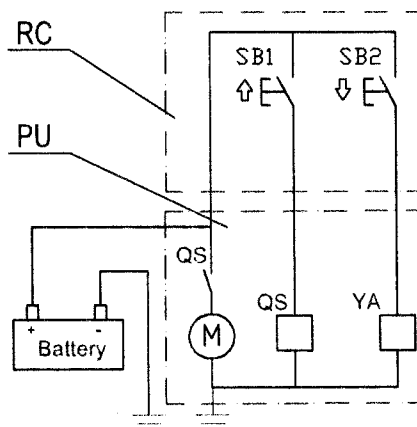


Section A-A

NAME: HYDRAULIC POWER UNIT
 PART NUMBER: YBZ-F2.1E1W2/WUCAT1
 DESIGN: ZHOU DEJUN
 REV: 0 DATE: Jun.10 2008
 CUSTOMERS PART#: 251084



Hydraulic Schematic



Electric Schematic

9	Remote Control	2 Button, 3 Lines, 10 feet long
8	Manifold	
7	Relief Valve	Relief Pressure 2800 PSI
6	DC Motor	2.0 HP, 12V, 2600RPM, S3 duty
5	Solenoid Release Valve	12VDC, NC
4	Check Valve	
3	pump	CBK-F2.1F, 0.128 Cu.In/Rev
2	Suction filter	
1	Tank	Steel, 12 Qt, Horizontal
NO	Description	Technica data

253-107