

# CB2A

## General Description

The CB2A gear pump consists of a gear pair supported by two aluminum bearing blocks, a housing, front cover and rear cover. The axial clearance can be automatically compensated by the bearing blocks. The CB2A pump features simple structure, high mechanical and volumetric efficiency, low noise, high reliability as well as low weight/power ratio. Both CW and CCW direction pumps are available.

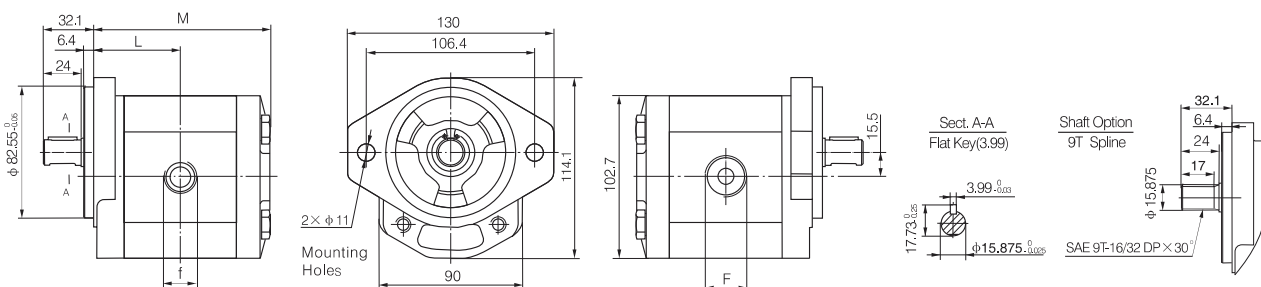


## Order Code

**CB2A - F \* \* \* \* \***

20MPa	Rated pressure	Shaft Option	Omit	11mm Mounting Hole
4~35mL/r	Displacement		D	11mm Open Mounting Hole
Omit or S	SAE O-ring boss (BSPP)	Shaft Option	Omit	9T Spline
A	Gas Threaded Ports(BSPP)		A	Flat key (3.99mm)
B	Metric Threaded Ports	Port Configurations	Omit	CW
			F	CCW
			Direction	

## Outline Dimension



## Technical Data

Model	Displacement mL/r(in <sup>3</sup> /r)	Pressure (MPa)			Speed (RPM)		Dimension					
		P1	P2	P3	Rated	Max	L(mm)	M(mm)	F Inlet	f Outlet		
CB2A-F4 ****	4.47 (0.273)	20	25	28	2000	4000	45.6	93.2	SAE SAE port 1 1/16"-12UN	SAE SAE port 7/8-14UNF		
CB2A-F6 ****	6.37 (0.389)						47.1	96.3				
CB2A-F7 ****	7.04 (0.428)						47.7	97.4				
CB2A-F9 ****	9.55 (0.584)						49.6	101.3				
CB2A-F11 ****	11.49 (0.701)				1500	3200	2800	2500	51.3	104.6	BSPP BSPP port G3/4	BSPP BSPP port G1/2
CB2A-F14 ****	14.04 (0.857)								53.4	108.9		
CB2A-F15 ****	15.92 (0.934)								54.9	111.9		
CB2A-F17 ****	17.76 (1.050)								56.4	114.9		
CB2A-F21 ****	21.07 (1.285)	18	20	22	1800	2200	59.1	120.3	Metric port M27x2	Metric port M22x2		
CB2A-F23 ****	23.27 (1.441)					2000	60.9	123.9				
CB2A-F28 ****	28.05 (1.713)					64	130.1					
CB2A-F32 ****	31.88 (1.946)	15	17	19	1800	68.1	138.2	1 5/16"-12UN G1	1 1/16"-12UN G3/4			
CB2A-F35 ****	35.06 (2.141)					70.6	143.2			M33x2	M27x2	