

8

7

6

5

4

3

2

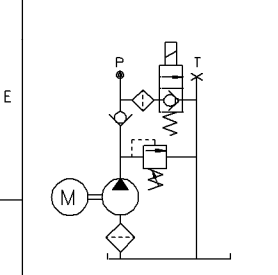
**** NAMEPLATE INFORMATION ****

CUSTOMER BAILEY SALES	
SPIN NUMBER	PART NUMBER
DATE	WORK NUMBER
PERFORMANCE P.S.I.	DB-1680
AMP	2500
ROCKFORD, IL	

REVISIONS

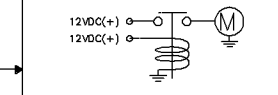
REV.	BY	CHECKED	ECO	DATE	DESCRIPTION
1A	CER	KMC	07030082	3/21/2007	CHANGED THE AMP DRAW FROM 1800 TO 200
1B	CER	KMC	07030082	3/21/2007	FIXED TERMINAL, VF-4009 & 2507-AA VIEWS

**** HYDRAULIC CIRCUIT ****

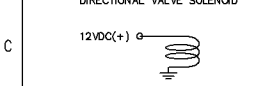


**** ELECTRIC CIRCUIT ****

START SWITCH AND MOTOR



DIRECTIONAL VALVE SOLENOID



**** UNIT SPECIFICATION ****

MOTOR	12 VOLT D.C. EXTENDED DUTY (1 TERMINAL)
PUMP	A.F.C. 2.0 CC/REV. (122 CUIN./REV.)
RELIEF	ADJUSTABLE RELIEF SET AT 2500 P.S.I.
ENDHEAD	3/8 N.P.T.F. PRESSURE-RETURN PORT (2) 3/8-16 TAP x .38 DP. MTC. HOLES
TANK	5.5 GALLON CAPACITY HORIZONTAL MOUNT WITH 3/8 N.P.T. BREATHER-FILL PORT
VALVING	CHECK VALVE 12VDC 2P2W LOWERING VALVE
WIRING	12 VOLTS D.C. TO MOTOR START SWITCH AND COIL
ASSEMBLY FINISHING	WIPE UNIT CLEAN OF OIL APPLY NAMEPLATE TO MOTOR FLUID MOTOR DRAIN HOLES
PACKING SHIPPING	SNIP G4-1000-00 LOOSE IN CARTON UNIT INDIVIDUALLY PACKED ONE PER CARTON CARTONS ON PALLET

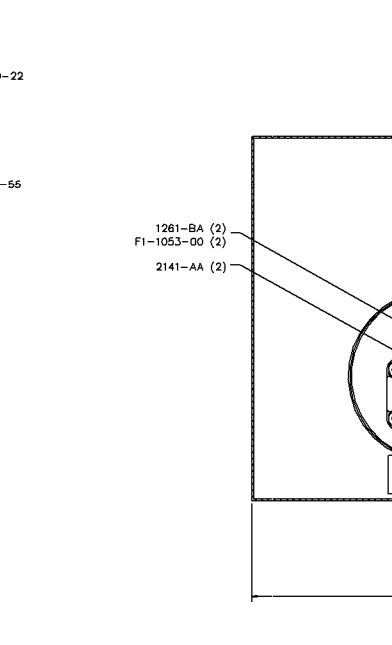
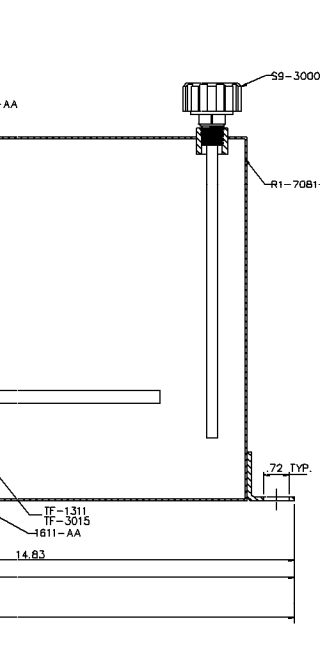
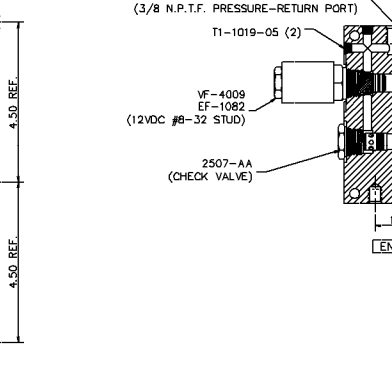
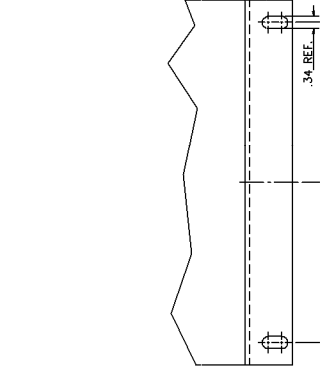
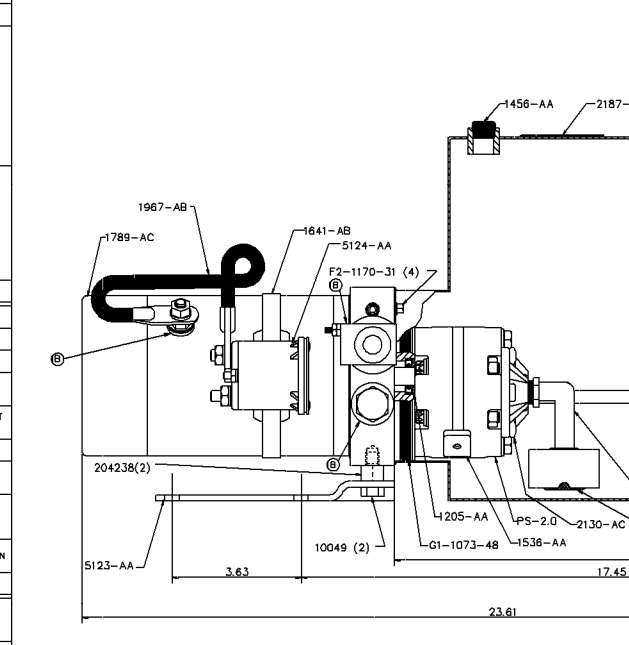
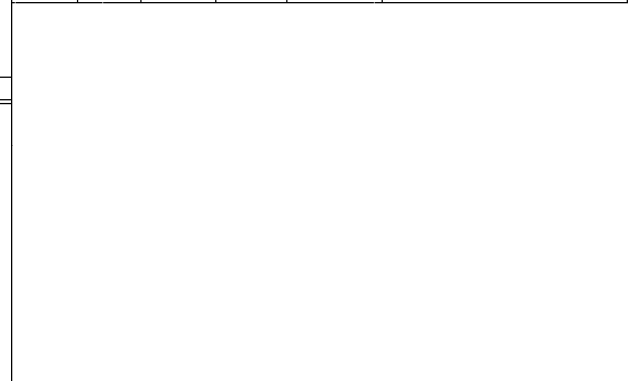
**** UNIT PERFORMANCE ****

1.3 G.P.M. AT 2000 P.S.I. AT 11.7 VOLTS D.C. & 200 AMPS AT 45 CENTISTOKES (200 SSU) (A)

SPX MANUFACTURING STANDARDS

FASTENER TORQUES LABELING	2.11.01 2.18.59
---------------------------	--------------------

WARNING
THIS POWER UNIT DOES NOT CONTAIN DEVICES WHICH PROTECT USERS FROM THE EFFECTS OF SUDDEN LOSS OF PRESSURE IN HYDRAULIC CYLINDERS.



8

7

6

5

4

3

2

THIRD ANGLE PROJECTION
THE INFORMATION CONTAINED IN THIS DRAWING IS THE SOLE PROPERTY OF SPX FLUID POWER. ANY REPRODUCTION IN PART OR AS A WHOLE WITHOUT WRITTEN PERMISSION OF SPX FLUID POWER IS STRICTLY PROHIBITED.

TOLERANCES UNLESS NOTED
ANGLES ± 1°
1 PLACE ± .020
2 PLACES ± .010
3 PLACES ± .005
4 PLACES ± .001
FINISH 125 MAX
C/B .020

DRAWN BY	C. RASCON	DATE DRAWN	2/15/2007	FOR PART or OPER.
CHECKED BY	CUMMINGS	DATE CHECKED	02/15/2007	HEAT TREAT
MATERIAL		ALT. MATERIAL		FINISH

SP	DRAWN
	NUM