

# Portable Pet Steps with Safety Lock

## INTRODUCTION

Congratulations on your purchase of the Portable Pet Steps. Help your pet safely reach sofas, beds and other hard-to-reach areas. The portable steps give your pet struggle-free access to their favorite places. Simply fold the steps for easy storage or to take with you when you and your pet travel.

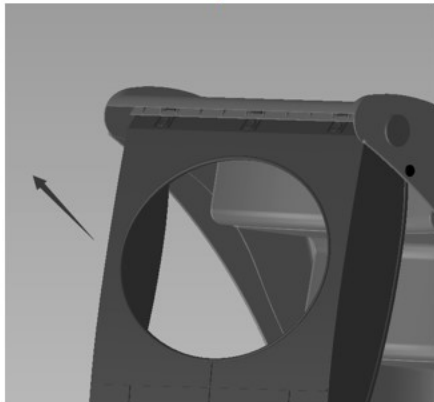
**⚠️ WARNING:** Keep fingers/hands clear of hinges and lock to avoid pinching. Make sure the screws on both sides are installed correctly to avoid injury.

**NOTE:** The pet steps are for smaller pet use only. Recommended for Pets up to 40 pounds.

Please read all instructions and warnings on this sheet prior to using your Portable Pet Steps. Keep this instruction sheet as it contains important information for future reference.

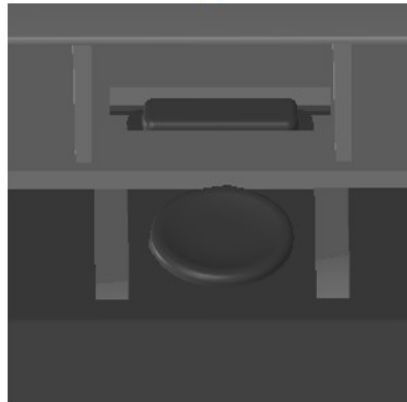
## ASSEMBLY

1



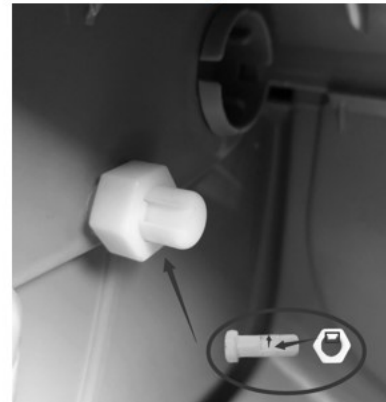
Pivot the back leg all the way out.

2



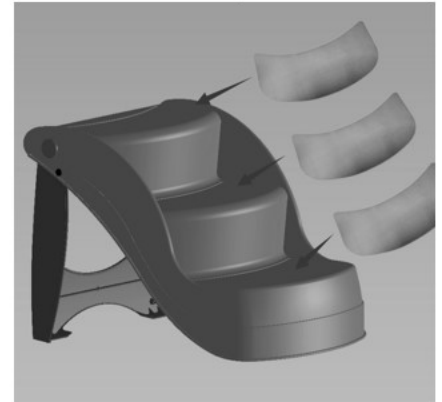
Make sure the lock is in place.

3



To attach the Safety Lock, insert the screw into the round hole on each side of the steps. Reach inside and **HAND** tighten the nut onto the screws. **REMOVE** the screws & nuts **BEFORE** collapsing for storage.

4



Attach the step tread one at a time. Remove the paper backing. Align the tread with the designated area on the step and press into position. Repeat until all steps are covered.

## CARING FOR YOUR PORTABLE PET STEPS

Clean your Portable Pet Steps with water and a damp cloth.