



## **12000lb.Winch**

### **User Manual & Operating Instructions**

#### **Performance Specifications**

##### **Max Line Pull**

12000lbs.(5443kgs)

##### **Gear reduction ratio**

253:1

##### **Motor**

Permanent magnet DC12V motor with 3.0hp output

##### **Overall Dimensions**

21.8in.( 553.5mm) L × 6.3in.( 160mm) W × 9.6in.( 244mm) H

##### **Drum size**

2.48in.( 63mm) D × 8.8in.( 223 mm) L

##### **Cable**

83.7ft.(25.5m) L of 13/32in.(10.2mm) D

##### **Net weight**

81.57lbs.(37kgs)

#### **Product Overview**

This winch is equipped with a permanent magnet motor and is designed for intermittent duty general use. This winch is not to be used for industrial lifting or moving people. Improper operation could damage the winch and void the warranty. Free spool clutch is operated by a pull and turn knob, which disengages the gearbox, allowing the cable to be released.

## INSTALLATION

Correct installation of the winch is required for proper operation.

- I Mount the winch on the vehicle or other fixed installation by using a screw (M10×1.5×35mm), M10 nut, Ø10 flat washer and Ø10 spring washer (four sets).

**WARNING:** This winch must be mounted with the cable in an under wound direction. Improper mounting could damage the winch and void the warranty. Connect the red wire to the positive terminal and the black wire to the negative terminal of the battery. (See Fig. 1).

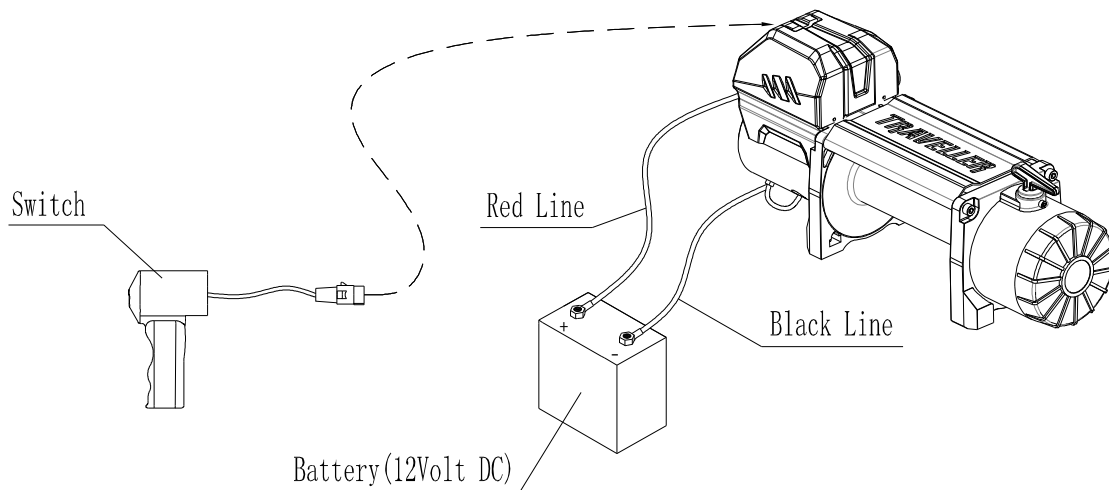


Fig. 1

- I Check the rotation direction of the drum. Pull and turn the clutch knob to the "FREE SPOOL" position (drum should turn freely by hand). Pull out some cable from the drum, and then turn the clutch knob to the "ENGAGE" position. Press the "OUT" button on the switch; if the cable is releasing then it is properly connected. Otherwise reverse the wire connections to the motor, and repeat the above-mentioned operation.

## OPERATION

- I Pull and turn the clutch knob, so the drum can turn freely by hand.
- I Use hand saver bar to hitch the hook of the cable assembly and pull cable to the load. Attach the cable hook to the load.

**WARNING:** Check that there are at least five turns of cable remaining on the drum before operation. Ensure the clutch knob is in the engaged position.

**CAUTION:** Clutch must be fully engaged before winching.

Never operate the clutch while drum is turning. Do not readjust clutch knob as it has been adjusted and permanently locked in place with a thread-locking compound in the factory.

- I Press the “IN” button on the switch to re-spool the cable. Press the “OUT” button to reverse directions. Wait until the motor stops before reversing directions.
- I Re-spool the cable after completing the operation.

## REPLACING THE CABLE

- I Engage the clutch by turning the clutch knob to the “ENGAGE” position.
- I When inserting the cable into the drum, insert it into the correct end of the hole provided. Tighten the screws.
- I Operate the winch and re-spool the cable around the drum tightly.

**CAUTION:** To keep the stated tension, be sure the cable is wrapped on the drum tightly.

**WARNING:** Always replace damaged cable with manufacturer’s identical replacement part.

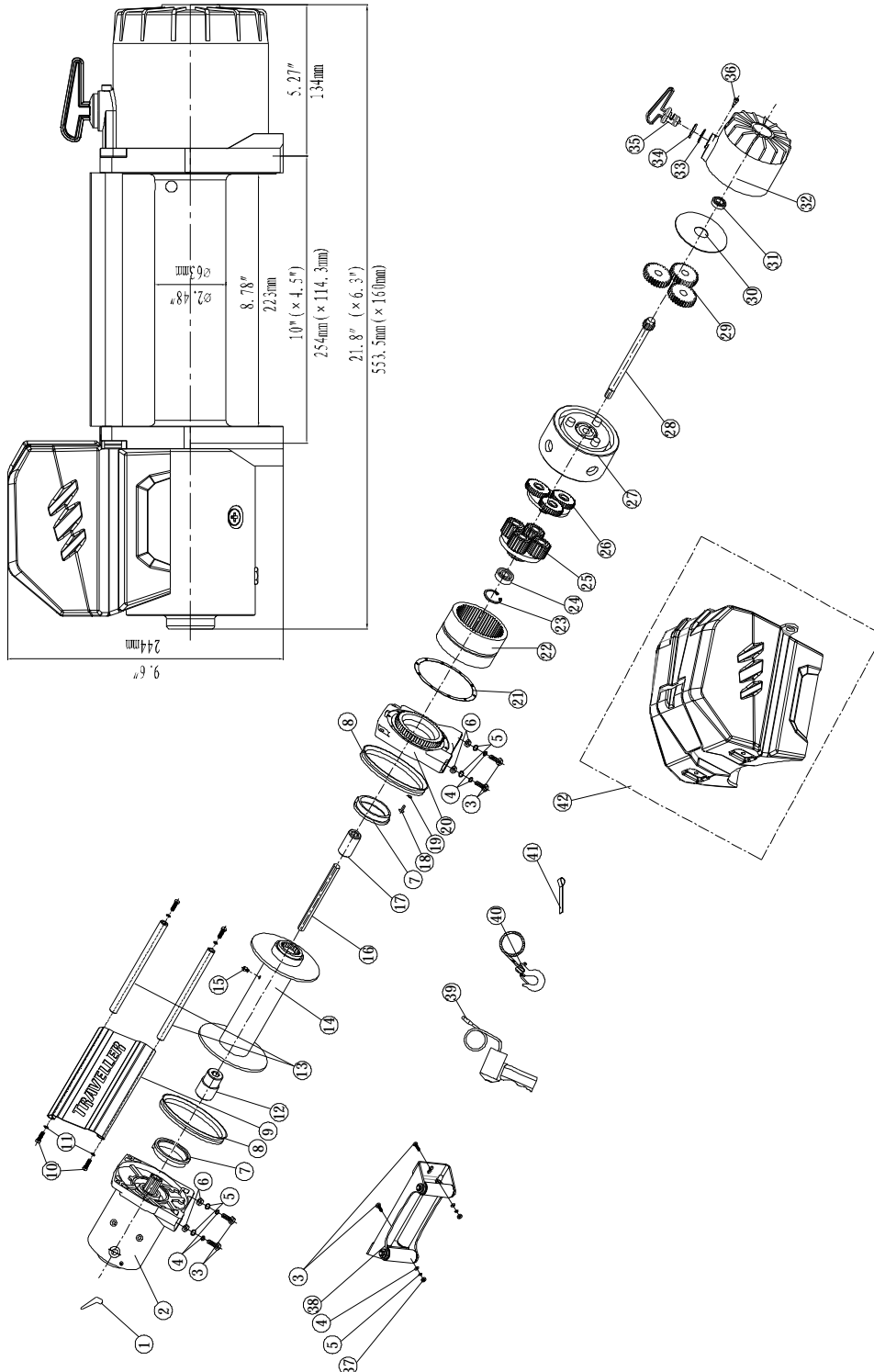
## MAINTENANCE

- I Periodically check tightness of mounting bolts and electrical connections. Remove all the dirt or corrosion and always keep clean.
- I Do not attempt to disassemble the gearbox. Repairs should be done by the manufacturer or authorized repair center.
- I The gearbox has been lubricated using high temperature lithium grease in the factory. No internal lubrication is required except when being repaired.

## TROUBLE SHOOTING

SYMPTOM	POSSIBLE CAUSE	SUGGESTED ACTION
Motor does not turn on	-Switch Assembly not connected properly	-Insert switch assembly all the way into the connector.
	-Loose battery cable connections	-Tighten nuts on all cable connections.
	-Defective switch assembly	-Replace switch assembly.
	-Defective motor	-Check for voltage at armature port with Switch pressed. If voltage is present, replace motor.
	-Water has entered motor	-Allow to drain and dry. Run in short bursts without load until completely dry.
Motor runs but cable drum does not turn	-Clutch not engaged	-Turn clutch to the "In" position. If problem persists, a qualified technician needs to check and repair.
Motor runs slowly or without normal power	-Insufficient current or voltage	-Battery weak recharge. Run winch with vehicle motor running. -Loose or corroded battery cable connections. Clean, tighten, or replace.
Motor overheating	-Winch running time too long	-Allow winch to cool down periodically.
Motor runs in one direction only	-Loose or corroded battery cable or motor cable connections.	-Clean and tighten.
Winch braking malfunction.	-Cable works in wrong direction.	-Adjust the cable working direction -Clockwise direction looking from motor end.
	-Brake slice worn or breakdown.	-Adjust braking angle or replace with new brack slice.

## WINCH ASSEMBLY



## WINCH PART LIST(12000LBS)

No.	Part #	Qty	Description
1	V01200001	3	Terminal Protect
2	V01200100	1	Motor Assembly
3	V01200002	6	Cap Screw M10 x 35
4	V01200003	6	Lock Washer Φ10
5	V01200004	6	Thin Flat Washer Φ10
6	V01200005	4	Hex Nut M10
7	V01200006	2	Bushing—Drum
8	V01200007	2	Ring Seals
9	V01200008	1	Cover Plate
10	V01200009	4	Lock Washer Φ8
11	V01200010	4	Cap Screw M8 x 30
12	V01200011	1	Coupling
13	V01200012	2	Tie Bar
14	V01200200	1	Drum Assembly
15	V01200013	1	Screw M8 x 10
16	V01200014	1	Six Angle Bar
17	V01200015	1	Coupling
18	V01200016	8	Screw M5 x20
19	V01200017	8	Lock Washer Φ5
20	V01200018	1	End Bearing
21	V01200019	1	Gasket
22	V01200020	1	Gear—Ring
23	V01200021	1	Circlip For Hole
24	V01200022	1	Bearing
25	V01200300	1	Gear Carrier Assembly (Output)
26	V01200400	1	Gear Carrier Assembly (Intermediate)
27	V01200500	1	Brake/ Shaft Assembly
28	V01200023	1	Gear—Input Sun
29	V01200024	3	Planetary Gear
30	V01200025	1	Trust Washer
31	V01200026	1	Bearing
32	V01200027	1	Gear—Housing
33	V01200028	1	“O” Ring
34	V01200029	1	Ring Seals
35	V01200030	1	Clutch Handle
36	V01200031	1	Clutch Screw
37	V01200032	2	Locknut M10
38	V01200600	1	Roller Fairlead
39	V01200700	1	Remote Control Switch (RC8)
40	V01200800	1	Cable Assembly
41	V01200033	1	Strap
42	V01200900	1	Control Assembly

## **SAFETY PRECAUTIONS**

- I Never lift people or hoist loads over people. Do not lift items vertically, this winch is designed for horizontal use only.
- I Never overload. Be sure all equipment used meets the winch's maximum line pull rating. When double-lining, pulley blocks should be rated for a minimum of two times the winch's line pull rating.
- I Do not attempt prolonged pulls with heavy loads. The electric winch is designed for intermittent use only, and should not be used in a constant duty application. Never pull for more than one minute or exceed the rated load. If the winch motor becomes hot to the touch, stop the winch and allow it to cool down for several minutes.
- I Never operate winch with less than 5 turns of cable around the winch drum since the cable end may not withstand full load.
- I Avoid continuous pulls from extreme angles because this will cause the cable to gather on one end of the drum and damage the cable. Be aware that the winch's line pull capacity is the max line pull of the first layer. Never operate winch pulling a load that exceeds the rated capacity.
- I Never hook the cable back to itself because it could damage the cable.
- I Be sure the winch is mounted securely on the vehicle or bracket before operation.
- I Before moving a load, inspect the cable. Prevent kinks and uneven cable layer before they occur. Apply proper tension to loads under 100lbs.
- I Do not move your vehicle to assist the winch in pulling the load. It will be easy to overload, and cause cable damage. Be aware of the danger zone. Keep away from the danger zone during the operation. The danger zone is the area of the winch drum, the fairlead (if fitted), the cable, the pulley block (if used), the hook, and the motor.

- I Never approach or span the cable when the winch is under load.
- I When using the winch to move a load, place the vehicle transmission in neutral, set vehicle brake, and chock all wheels. The vehicle engine should be running during winch operation so that battery has fully electricity. Never use the winch when there is a lack of voltage.
- I Never disconnect free spool cultch when there is a load on the winch.
- I Always stand clear of the cable, hook and winch. You should disconnect the clutch first, then use the hand saver bar to hitch the hook to pull the cable.
- I Inspect winch, cable, hooks and other accessories frequently. A frayed cable with broken strands should be replaced immediately. Use heavy leather gloves when handling the cable. Do not let the cable slide through your hands. Inspect the cable before use. Mashed , pinched, frayed or kinked areas severely reduce the load-carrying capability. Replacement cables must be re-spooled under 100lbs.
- I To keep stated tensile, re-spool the cable around the drum tightly after operation.
- I Do not operate winch when under the influence of drugs, alcohol or medication. Always stay alert during operation.
- I Wear eye protection and personal protective equipment while operating winch.
- I For loads over 50% of rated line pull, the use of the pulley block/snatch block to double the cable is recommended.
- I Do not operate around potentially flammable liquids, gases, or debris. Sparks may occur, resulting in the ignition of fire.



### Line speed and Motor current(First layer)

Line Pull	Line Speed ft./min (m/min)	Motor Current Amps
lbs.(kgs)	12V DC	12V DC
0	29.5(9.0)	60
3000(1361)	13.1(4.0)	150
5000(2268)	11.5(3.5)	200
9000(4082)	6.2(1.9)	310
12000(5443)	4.9(1.5)	380

### Line Pull And Cable Capacity

Layer	Rated line pull lbs (kgs)	Total rope on the drum ft (m)
1	12000(5443)	16.1 (4.9)
2	9563(4338)	36.4 (11.1)
3	7948(3605)	60.0 (18.3)
4	6800(3084)	83.7 (25.5)

**Distributed By:**

**TRACTOR SUPPLY COMPANY**

**5401 VIRGINIA WAY,**

**BRENTWOOD, TN37027**

**For customer support, call:1-888-376-9601**

**[www.TractorSupply.com](http://www.TractorSupply.com)**

**MADE IN CHINA**