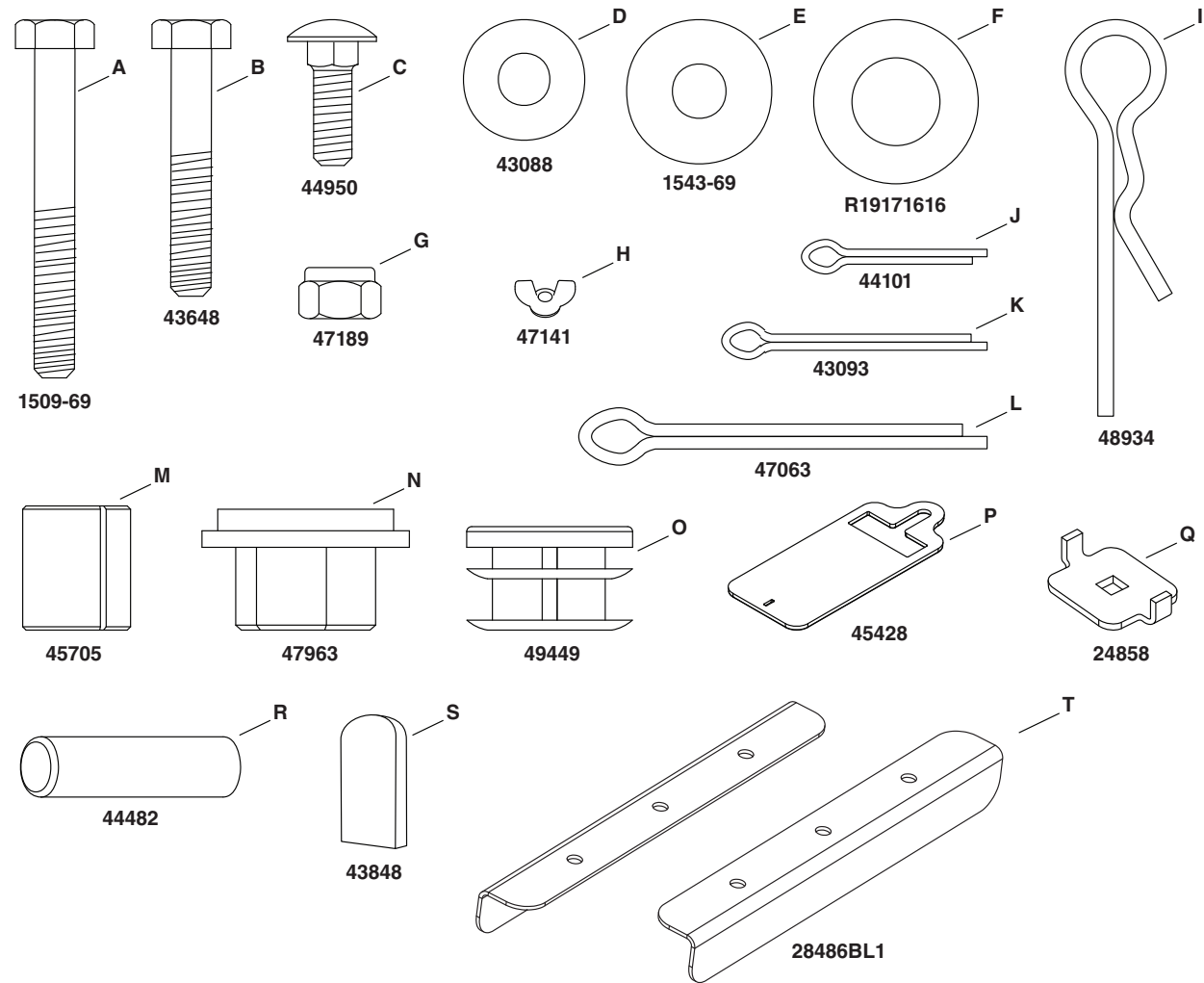


HARDWARE PACKAGE



DESCRIPTION	QTY	DESCRIPTION	QTY
Hex Bolt 1/4-20 X 1-3/4 (A)	6	Cotter Pin, 1/8" x 1-1/2" (K)	1
Hex Bolt, 1/4" - 20 x 1-1/2" (B)	7	Cotter Pin, 5/32" x 2" (L)	1
Carriage Bolt, 1/4"-20 x 3/4" (C)	1	Plastic Spacer (M)	2
Washer, 5/16" (D)	9	Hex Flange Bearing .50 ID (N)	2
Nylon Washer (E)	1	Plug 1" (O)	3
Washer, 17/32" (F)	3	Flow Plate (P)	1
Nyloc Hex Nut, 1/4"-20 (G)	12	Adjustable Stop (Q)	1
Nylon Wing Nut (H)	1	Handle Grip (R)	2
Agitator Hairpin (I)	1	Control Arm Grip (S)	1
Cotter Pin, 3/32" x 3/4" (J)	3	Support Angle (T)	2

TOOLS REQUIRED FOR ASSEMBLY

- (1) Hammer
- (1) Pliers
- (2) 7/16" Wrenches

STEP 1: (SEE FIGURE 1)

- Assemble the flow plate (P) to the hopper assembly (6) as shown below.

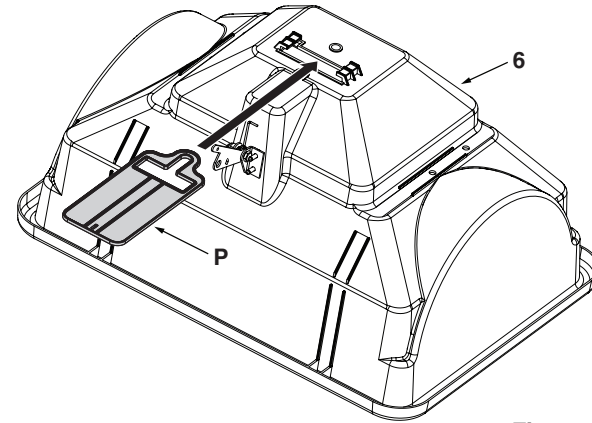


Figure 1

STEP 2: (SEE FIGURE 2)

- Position the flow plate (P) and slide gate bracket as shown below.

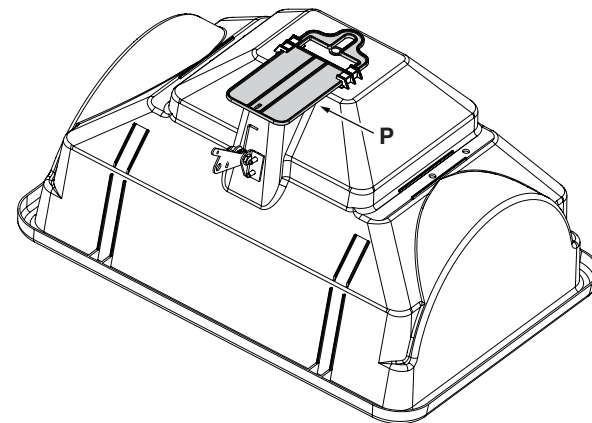


Figure 2

STEP 3: (SEE FIGURE 3)

- Insert the tab on the slide gate bracket into the notch in the flow plate (P). Secure with a 3/4" cotter pin (J) by bending the ends out.
- Orient the axle/gearbox assembly so that the end of the axle with the hole near the end is placed on the right side of the spreader.

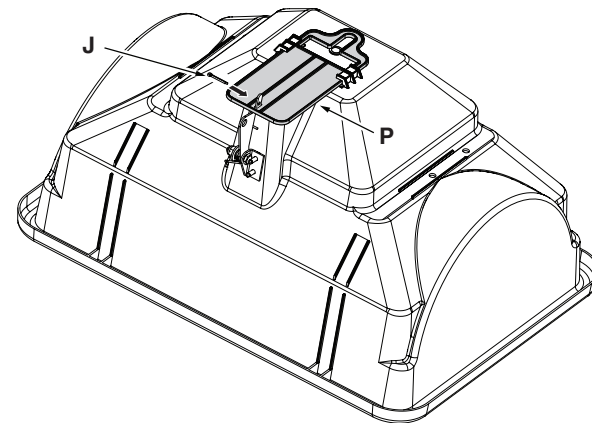


Figure 3

STEP 4: (SEE FIGURE 4)

- NOTE: Make sure to insert the axle as shown below. The right side has a hole at the very end, and the left side has a hole further away from the end. Attach the gearbox (10) to the axle (9) by inserting the axle through the frame (5) and gearbox and through the other side of the frame. Secure with a 1-1/2" cotter pin (K) by bending the ends out.

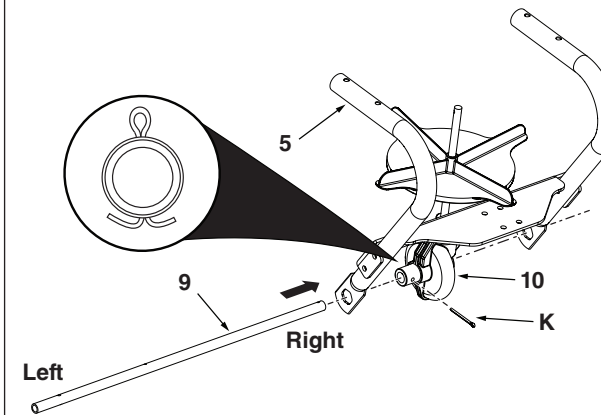


Figure 4

STEP 5: (SEE FIGURE 5)

- Assemble the plugs (O) into the frame and slide the flange bearings (N) onto the axle and secure in the frame.

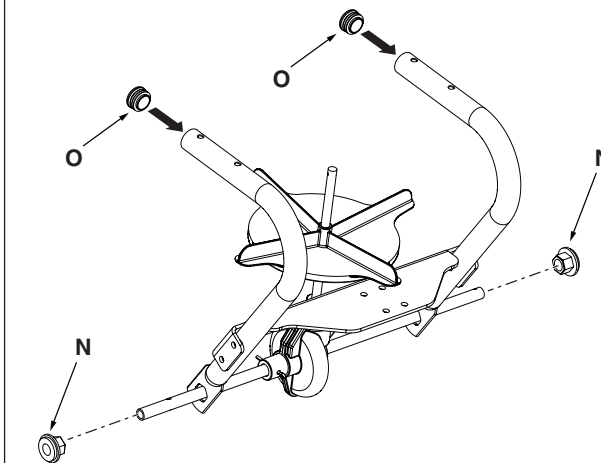


Figure 5

STEP 6: (SEE FIGURE 6)

- Attach the hopper to the frame and support angles (T) using four 1/4 x 1-3/4" hex bolts (A), 5/16" washers (D), and 1/4" nylock nuts (G). Guide the impeller shaft through the hole in the flow plate and hopper. Insert the hairpin agitator (I) through the impeller shaft once inside the hopper. Tighten hardware.

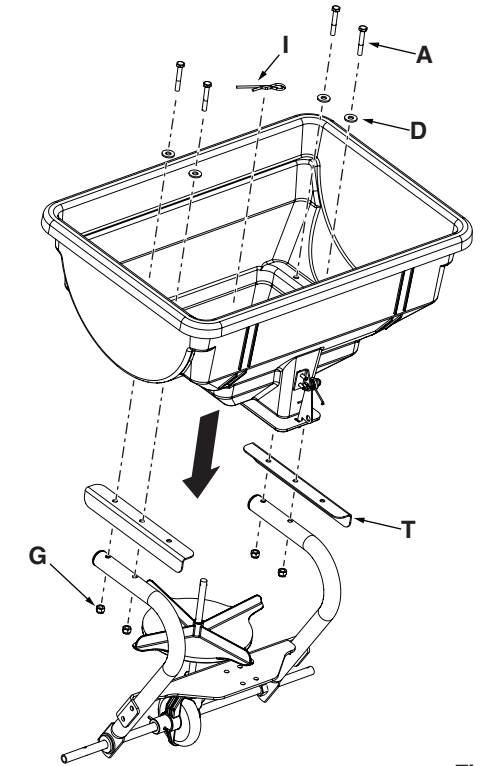


Figure 6

STEP 7: (SEE FIGURE 7)

- Attach the leg tube (11) to the frame using two 1/4 x 1-1/2" hex bolts (B) and 1/4" nylock nuts (G). Assemble the plugs (O) into the leg tube (11). Tighten hardware.

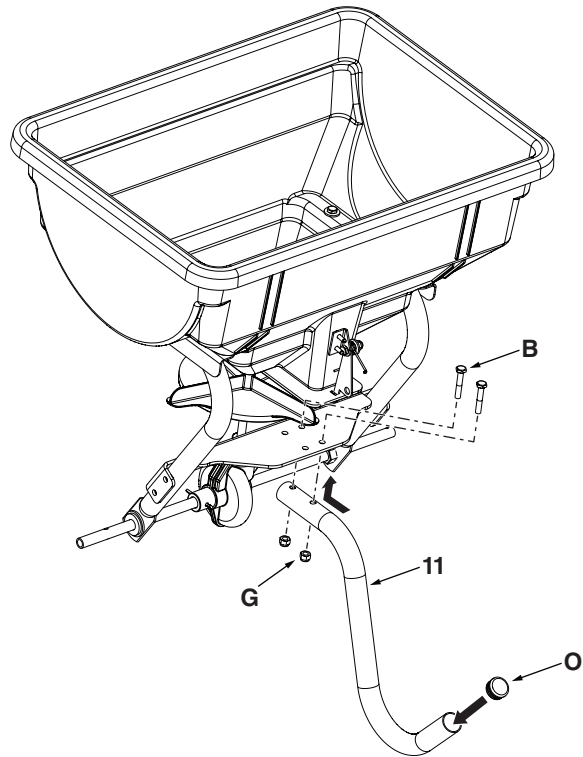


Figure 7

STEP 8: (SEE FIGURE 8)

- Attach a wheel to the right side by sliding onto the axle, a 17/32" washer (F), a plastic spacer (M), a wheel (1), another 17/32" washer (F) and secure with a 3/4" cotter pin (J) by bending the ends out.

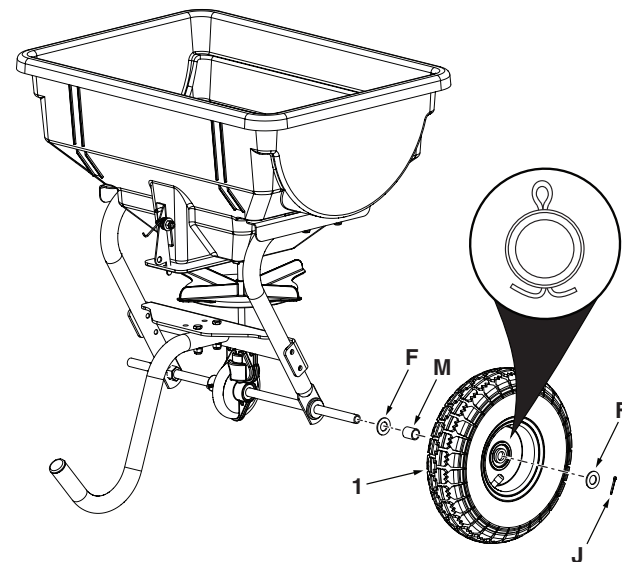


Figure 8

STEP 9: (SEE FIGURE 9)

- Attach the other wheel to the left side by sliding onto the axle, a 17/32" washer (F), a plastic spacer (M) and a wheel (1). Secure the wheel to the axle by inserting the 2" cotter pin (L) through the hole in the inside of the wheel and through the axle. Secure by bending the ends out.

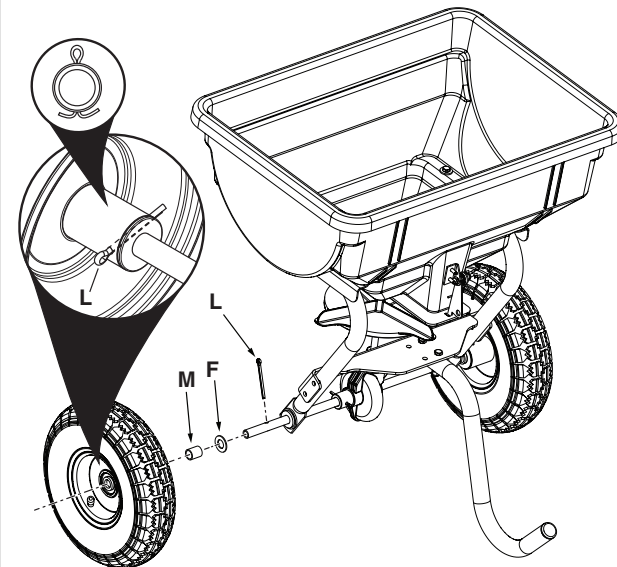


Figure 9

STEP 10: (SEE FIGURE 10)

- Attach the lower handle tube (7) to the frame using two 1/4 x 1-1/2" hex bolts (B) and 1/4" nylock nuts (G). Tighten hardware.

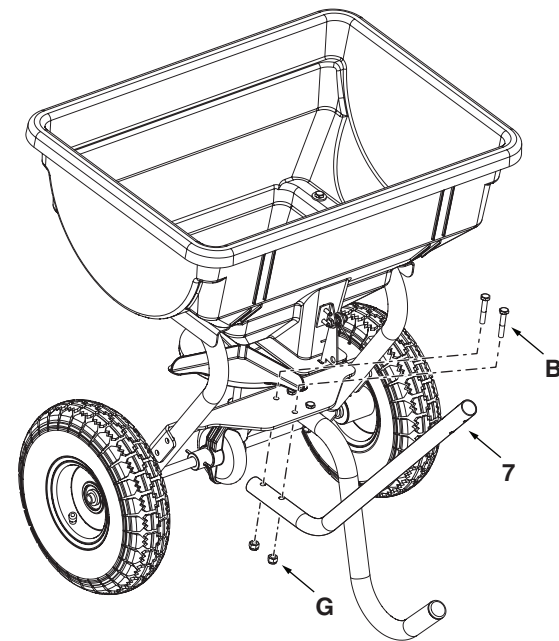


Figure 10

STEP 11: (SEE FIGURE 11)

- Attach the handle tube (2) to the lower handle tube using two 1/4 x 1-1/2" hex bolts (B) and 1/4" nylock nuts (G). Tighten hardware.

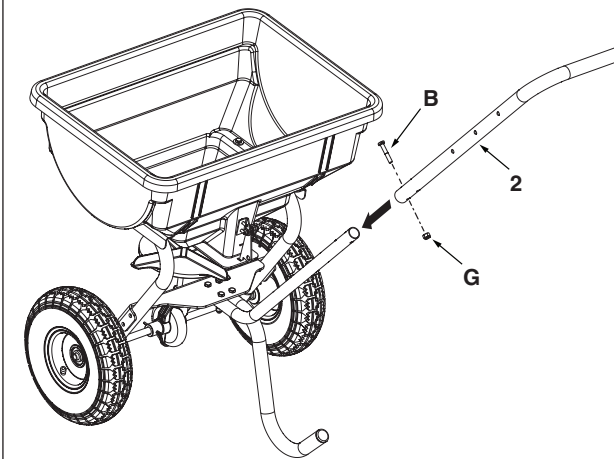


Figure 11

STEP 12: (SEE FIGURE 12)

- Attach the short handle tube (3) to the handle tube using a 1/4 x 1-3/4" hex bolt (B) and secure with a 1/4" nylock nut (G). Slide the handle grips (R) onto the ends of the short handle tube and the handle tube. Tighten hardware.

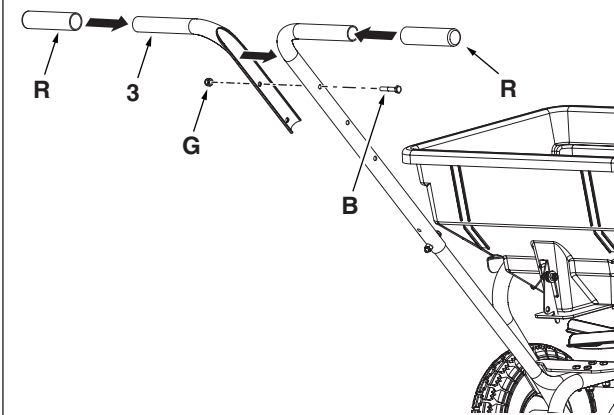


Figure 12

STEP 13: (SEE FIGURE 13)

- Attach the control assembly (4) using two 1/4 - 1-3/4" hex bolts (A), four 5/16" washers (D) and two 1/4" nylock nuts (G).

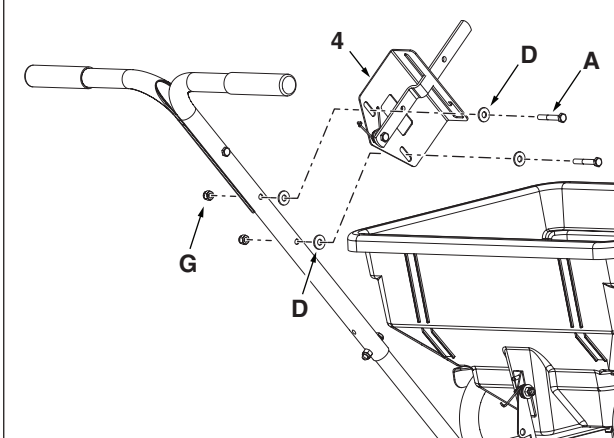


Figure 13

STEP 14: (SEE FIGURE 14)

- Attach the end of the control rod (8) shown below through the slide gate bracket on the hopper.

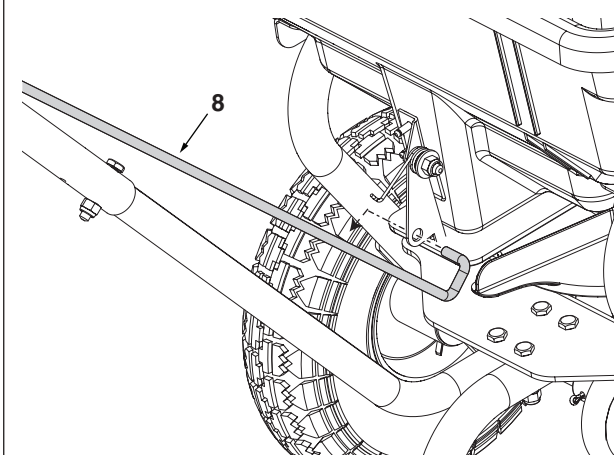


Figure 14

STEP 15: (SEE FIGURE 15)

- Attach the other end of the control rod (8) through the hole in the control arm. Place a 5/16" washer (D) over the end of the control rod and secure with a cotter pin (J) by bending the ends out.

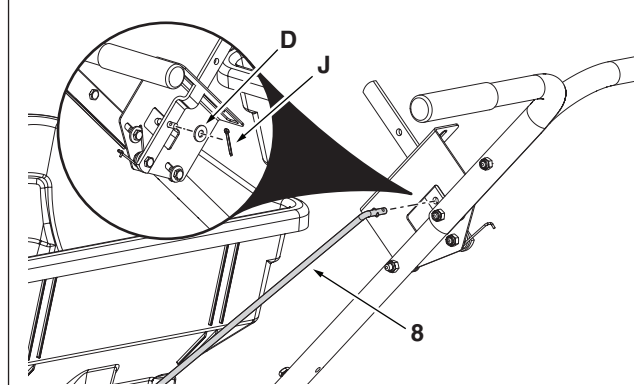


Figure 15

STEP 16: (SEE FIGURE 16)

- Assemble the adjustable stop (Q) to the control bracket using a 1/4" carriage bolt (C) through the stop (Q) and through the slot in the control bracket. Secure on the other side with a nylon washer (E) and a nylon wing nut (H). Slide the control arm grip (S) onto the control arm.

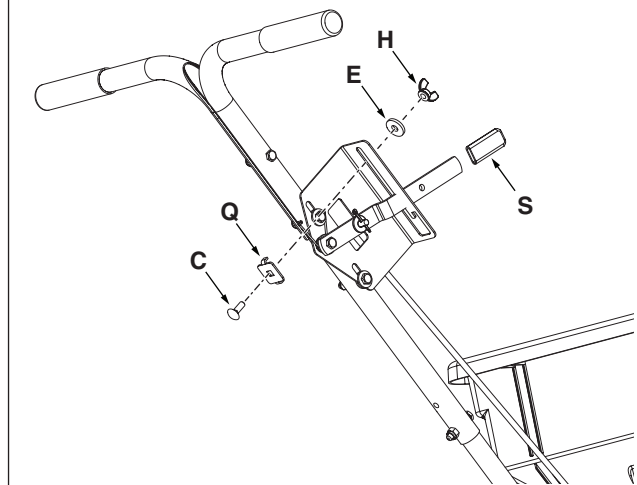


Figure 16