

# Installation Instructions

## 5421012 Weight Distributing Hitch System

**IMPORTANT:** Prior to installation, read all instructions and check package contents before beginning installation.

Place installation instructions and warranty information in vehicle glove box after installation.

**Rating** when used as a weight distribution hitch,  
 WITH spring bars: GVWR - 12,000 lbs.  
 MVL - 1,200 lbs.  
 WITHOUT spring bars: GVWR - 6,000 lbs.  
 MVL - 600 lbs.

Do not exceed towing vehicle manufacturer's load rating.



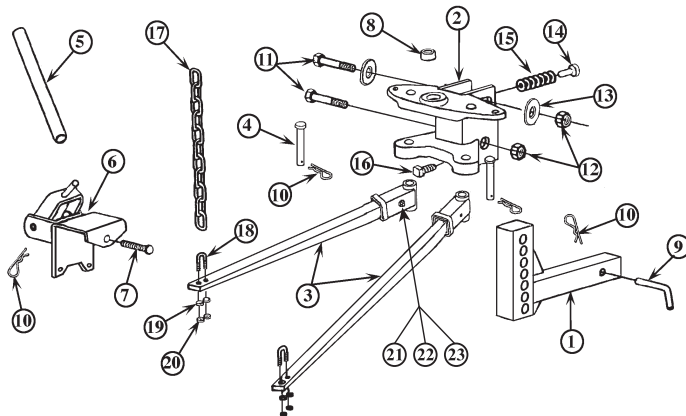
### CAUTION

The tongue weight rating of the spring bars represents the capacity of a pair of bars, NOT an individual bar. Always use a pair of spring bars and be sure they are of the same weight rating.

### Bill of Materials

ITEM	PART NO.	QTY.	DESCRIPTION
1	3020374	1	Shank Assembly
2	3020375	1	Head Assembly
3	3020376	2	1200 Spring Bar Set
4	3020377	2	Clevis Pin 1202-02
5	3020378	1	Lift Handle 1543-05
6	3020379	2	Lift Bracket Assembly
7		2	1/2 x 3-1/2 Hex Bolt
8		1	Reducer Bushing
9		1	Hitch Pin
10		5	Hair Pin
11		2	3/4 x 4-1/2 Hex Bolt
12		2	3/4 Locknut
13		2	3/4 Conical Washer
14		1	Pin
15		7	Hardened Washer
16		1	5/8 x 1-1/2 Hex Screw
17		2	Lift Chain
18		2	3/8 U-Bolt
19		4	3/8 Flat Washer
20		4	3/8 Locknut
21		2	1/4 x 2-1/2 Bolt
22		2	Split Washer
23		2	Nut w/ Nylon Insert

Item # 7-23 included in 5421012HDW



### Measure Trailer Coupler Height

Line up the tow vehicle and trailer on level pavement in a straight and uncoupled position. Measure the distance from the pavement to the top of the coupler as shown below.

See Fig. 1

A: \_\_\_\_\_  
 B: \_\_\_\_\_  
 C: \_\_\_\_\_

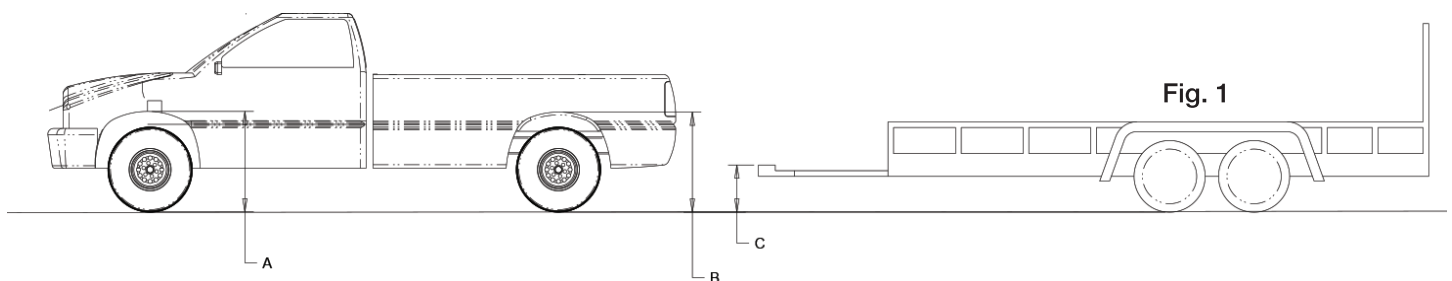


Fig. 1

### Install Shank Assembly, Head Assembly and Ball

1. Insert the shank assembly (*item 1*) into the receiver on the towing vehicle and secure with the hitch pin (*item 9*) and the hair pin (*item 10*).
2. Select a hitch ball with a 1-1/4" shank diameter that matches the trailers coupler size.
3. Locate the proper height for the head assembly (*item 2*) to be positioned to match the coupler height. See Fig. 1
4. Install the head assembly onto the shank assembly, using a hex bolt (*item 11*), conical washer (*item 13*) and locknut (*item 12*). The lower head on the channel should be assembled first. *The torque rating on the hex bolt should be 200 ft. pounds*
5. Rotate the head assembly forward as far as possible.
6. Install hex bolt, conical washer and locknut into the upper slot of the head assembly.

### Spring Bar Assembly

1. Install lift chain (*item 17*) onto the spring bar (*item 3*) using the U-bolt (*item 18*), flat washer (*item 19*) and lock nut (*item 20*).
2. Approximately 2-3 threads on the U-bolt should be showing after the lock nut is secured.
3. The chain must be free to move within the U-bolt
4. Attach the spring bar assembly to the head assembly (*item 2*) so that they are perpendicular.

### Chain Lift Brackets

1. Hold the lift chain (*item 17*) up vertically.
2. Place the lift bracket (*item 6*) onto the trailer tongue where the hook on the lift bracket meets the center of the link.
3. The lift bracket will be held in place by using the hex bolt (*item 7*). Tighten the bolt a quarter of a turn after it contacts the trailer frame. **DO NOT OVERTIGHTEN.**
4. Before lowering or raising the lift bracket, raise the front of the trailer to reduce the tension of the spring.

### **WARNING**

Keep clear of the pivot path of all moving parts when there is tension on the spring bar chain. Maintain control of the lift handle at all times when raising or lowering the spring bar. Be sure that the locking hair pin is in place once lift bracket is in the up position.

5. Use the lift handle (*item 5*) to rotate the lift chain attachment. Insert hair pin (*item 10*) into the lift bracket.
6. There should be at least five links on each side between the lift bracket and the spring bar to allow for proper tension while turning.

### **CAUTION**

If chain is angled forward or backward at the top within the lift bracket, it may catch on the bracket when turning. This could damage the lift bracket or pry it open.

### Adjusting the Spring Bars

1. After the connections have been made, ensure that the vehicle has settled evenly or within a 1/2". See Fig. 1. Verify that A and B are both within a 1/2" of the original measurements.
2. Increase or decrease the number of links to ensure that they have settled no more than 1/2".

### Towing Advice

The additional weight of the trailer affects over-all acceleration and braking. You should allow for additional time when stopping, passing and changing lanes. If you were to "bottom-out" your equipment, or if you suspect that there has been some damage to your equipment, thoroughly inspect your equipment and repair any damages prior to resuming towing.

### Distributing the Weight of a Load

Items that are heavier, should be placed of the trailer axle. Generally, the tongue weight should be 10% of the gross trailer weight. If the tongue weight is less than 10%, there is an increased probability of your load to sway. Buyers Products does offer a Sway Control System, part number 5431000.

### Tire Inflation

Tires should always be inflated to their maximum recommended pressure.

### Maintenance

Keep the clevis pins on the trunnions well lubricated. If there is excessive wear in this area, it may indicate overloading or inadequate lubrication.

### Miscellaneous

For more information regarding this product or our warranty department, contact your dealer or write to Buyers Products Company, 9049 Tyler Blvd. Mentor, Ohio 44060. This product complies with regulation V-5, C.S.A. Standard D-264 and safety requirements for connecting devices and towing systems of the State of New York.

### WARRANTY

Buyers Products Co. warrants all truck/trailer hardware manufactured or distributed by it, to be free from defects in material and workmanship for a period of one year from date of shipment. Parts must be properly installed and used under normal conditions. Any product which has been altered, including modification, misuse, accident or lack of maintenance will not be considered under warranty. Normal wear is excluded. The sole responsibility of Buyers Products Co. under this warranty is limited to repairing or replacing any part or parts which are returned, prepaid, and are found to be defective by Buyers Products Co. Authorization from Buyers Products Co. must be obtained before returning any part. No charges for transportation or labor performed on Buyers' products will be allowed under this warranty.