

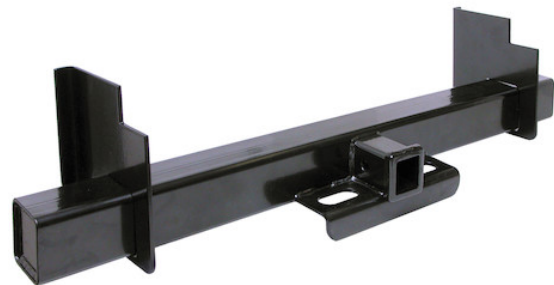


Class 5 44 Inch Service Body Hitch Receiver with 2 Inch Receiver Tube and 9 Inch Mounting Plates

Buyers Part Number: 1801050

Buyers Products Class 5 Service Body Hitch Receiver with 2 Inch Receiver Tube is designed for service body trucks and will handle towing loads up to 16,000 lb.

- Rated for up to 16,000 lb.
- Designed for service body trucks.
- All models include hitch pin and cotter except 3006909.
- Black powder-coated finish for superior corrosion resistance.
- Available in different lengths and with standard or tall mounting plates to suit a wide variety of applications.
- Mounting plates ship unwelded so they can be positioned to suit your needs.



Specifications

Application	Service Body	Class	Class V
Color	Black	Finish	Powder Coat
Material	Carbon Steel	Maximum Gross Trailer Weight (M.G.T.W.)	16000 lb
Maximum Vertical Load (M.V.L.)	1600 lb	Mount Type	Weld-on
Receiver Tube Size	2.00	Shipping Weight	48.7 lb