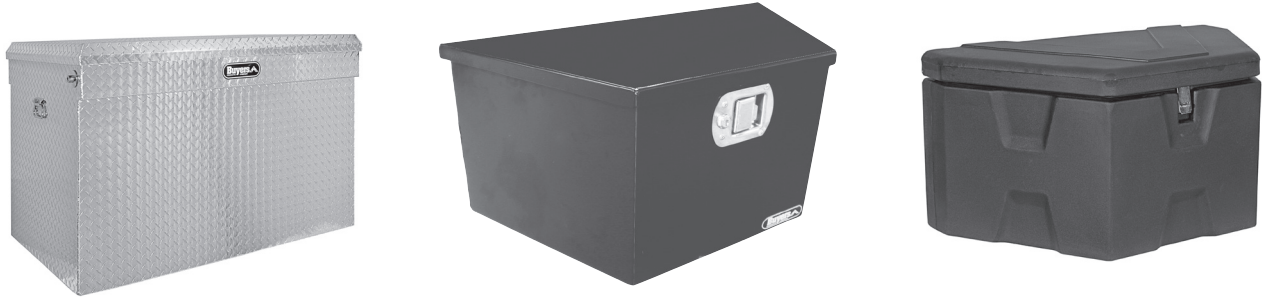


# Toolbox Mounting Instructions

.....

*Please read these instructions and warnings before installation.*



**NOTE:** These mounting instructions are for general purpose storage toolboxes such as Poly boxes, Trailer tongue boxes, Chest boxes, etc.

**To properly mount your storage toolbox please review the following recommendations:**

## Installation Tools

Protective Eyewear  
3/8" Drill  
Gloves  
Fasteners

- Select a secure location to mount your toolbox.
- Drill the toolbox for minimum 3/8" bolts and in at least four locations on the box.
- Mount the toolbox on a substructure that is solid and strong enough to hold the toolbox and the additional weight of its contents.
- Use steel or stainless steel hardware such as bolts, nylon locknuts, and fender washers (larger outside diameter washers) to secure the toolbox in place. The fender washers should be placed inside the toolbox to help secure the load. This is especially important for poly toolboxes.
- Check the toolbox mounting regularly for wear and to ensure that all hardware is secure.

## CAUTION

Always wear protective eye wear when installing to protect from debris.

## DANGER

Do not use this toolbox for the storage or transportation of flammables, explosives, hazardous waste or materials such as gasoline, solvents, gun powder, dynamite, propane tanks, acetylene tanks or cutting torches. This toolbox is only intended and safe for use in storing and transporting small tools and equipment and/or other materials.

## Warranty Information

Buyers Products Co. warrants all truck/trailer hardware manufactured or distributed by it, to be free from defects in material and workmanship for a period of one year from date of shipment. Parts must be properly installed and used under normal conditions. Any product which has been altered, including modification, misuse, accident or lack of maintenance will not be considered under warranty. Normal wear is excluded. The sole responsibility of Buyers Products Co. under this warranty is limited to repairing or replacing any part or parts which are returned, pre-paid, and are found to be defective by Buyers Products Co. Authorization from Buyers Products Co. must be obtained before returning any part. No charges for transportation or labor performed on Buyers' products will be allowed under this warranty.