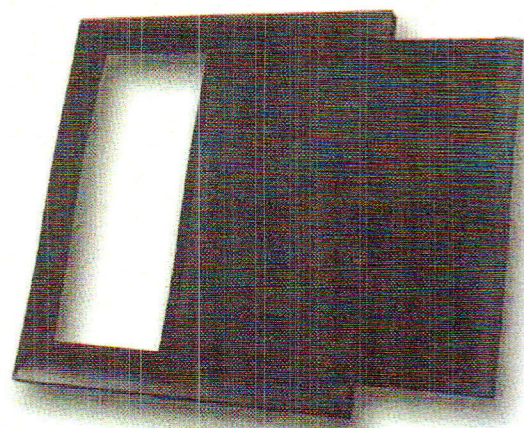




The Clean Breeze Debris Screen is an innovative new product that enhances your sliding rear window by providing clean air-flow. It prevents insects, trash and debris from entering the cab of your truck so you can enjoy a cleaner, more satisfying driving experience.



INSTALLS IN MINUTES! NO TOOLS REQUIRED!



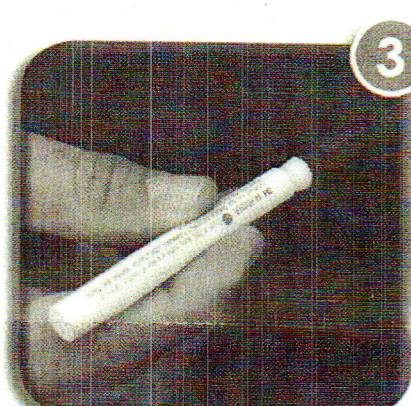
Step 1 – Clean Surfaces

For best results, clean both the rear window and back of frame surfaces with a 50/50 mixture of alcohol and water. Wipe dry with a clean cloth.



Step 2 – Test Positioning

Before using the adhesive tapes, determine the best position for the Clean Breeze Debris Screen™ by holding it in place to ensure a level/square install and marking the window with a grease pencil or dry-erase (if necessary) marker.



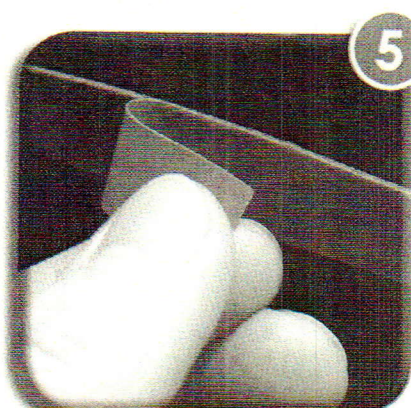
Step 3 – Prepare Surface

Activate the enclosed 3M Primer by snapping the ampoule in half and then apply to BOTH the frame surface and then the window surface where the 3M VHB tape will be mounted to the window.



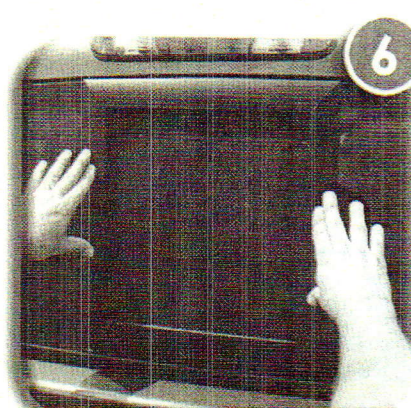
Step 4 – Position Tape

One at a time, carefully place the four adhesive strips in either the four corners or in the center of the top, bottom and sides of the window depending on the type of frame opening you may have.



Step 5 – Reveal Adhesive

Carefully peel the release paper from the 3M VHB tape.



Step 6 – Install Frame

Carefully align the screen frame to your predetermined & marked position. Now firmly press the frame into position and hold firm pressure for one minute.

For best results, do not wash your truck for 48 hours after installation.

NOTE: Some window configurations have surface elevation differences around the window opening due to the type of slider frame. They may be all glass, all steel or a combination of window steel and butyl rubber material. This will require proper placement of the 3M VHB tape. The recommended tape positions are listed in Step 4.

Also, some varieties of OEM and aftermarket windows have slightly less radius of the surface. The back base frame of the Clean Breeze Debris Screen is designed to flex to allow for this variance.

Follow these steps:

1. Position one each of the 3M VHB tape in the center of each the top, bottom and sides of the frame.
2. Then position the frame to be installed with the top alignment in place first.
3. Begin to apply pressure at the top first.
4. Now move pressure down both sides and then bottom. This will allow the back base frame to conform to the radius of the window.