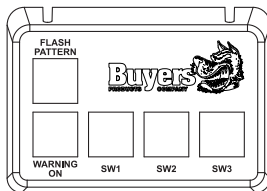


## Multi-purpose 5-switches Control Panel

### Wiring

- RED** ..... to +VDC
- BLACK** ..... to -GND
- YELLOW** ..... Flash Pattern [momentary switch]
- WHITE** ..... Warning ON [toggle switch]
- GREEN** ..... SW1 [toggle switch]
- BLUE** ..... SW2 [toggle switch]
- PURPLE** ..... SW3 [toggle switch]



### Switch Specification

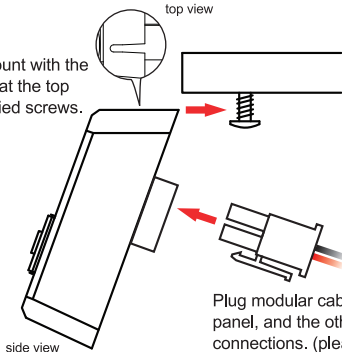
- Input Voltage: 10~30 VDC
- Input Current: 0.2A / port  
1.0A / 5 ports
- Output Voltage: 10~24 VDC
- Output Current: 0.2A / port
- Fuse Recommended: 2A

### Recommended Relay Specification (User-supplied)

- Input Voltage: 10~24 VDC
- Input Current: < 200mA

### Screw Mount Installation

Hanging Mount with the screw slots at the top and 2 supplied screws.



**NOTE:** Connect only the RED and BLACK wires to the power supply.

Plug modular cable to the back of the panel, and the other end to respective connections. (please refer to **Wiring**)