

48" Tow-Behind Bucket Culti-packer OWNER'S MANUAL



WARNING:

Read carefully and understand all **ASSEMBLY AND OPERATION INSTRUCTIONS** before operating. Failure to follow the safety rules and other basic safety precautions may result in serious personal injury.

MODEL # FTF-044BCP

Thank you very much for choosing this product! For future reference, please complete the owner's record below:

Model: FTF-044BCP Purchase Date: _____

Save the receipt, warranty, and these instructions. It is important that you read the entire manual to become familiar with this product before you begin using it.

This product is designed for certain applications only. The manufacturer cannot be responsible for issues arising from modification. We strongly recommend that this product not be modified and/or used for any application other than that for which it was designed. If you have any questions relative to a particular application, DO NOT use the product until you have first contacted us to determine if it can, or should, be performed on the product.

For technical questions, please call **1-218-943-6296**.

TECHNICAL SPECIFICATIONS

Item	Description
Coverage	48" working width
Roller Tubing Qty.	17
Roller Tubing Diameter	1/2"
Ball Coupler	2"
Tires	13" pneumatic wheels

IMPORTANT SAFETY INFORMATION



WARNING: Read and understand all instructions. Failure to follow all instructions listed below may result in serious injury.



CAUTION: Do not allow persons to operate or assemble this culti-packer until they have read this manual and have developed a thorough understanding of how it works.



WARNING: The warnings, cautions, and instructions discussed in this instruction manual cannot cover all possible conditions or situations that could occur. It must be understood by the operator that common sense and caution are factors that cannot be built into this product, but must be supplied by the operator.



WARNING: Do not exceed 30 PSI in each wheel.

SAVE THESE INSTRUCTIONS

WORK AREA

- **Keep work area clean**, free of clutter, and well-lit. Cluttered and dark work areas can cause accidents.
- **Keep children and bystanders** away while operating the culti-packer. Distractions can cause you to lose control, so visitors should remain at a safe distance from the work area.
- **Be alert of your surroundings.** Using a culti-packer in confined work areas may put you dangerously close to sharp tools and rotating parts.

PERSONAL SAFETY

- **Stay alert**, watch what you are doing, and use common sense when using a culti-packer. Do not use while you are tired or under the influence of drugs, alcohol, or medication. A moment of inattention while operating a culti-packer may result in serious personal injury.
- **Dress properly.** Do not wear loose clothing, dangling objects, or jewelry. Keep your hair, clothing, and gloves away from moving parts. Loose clothes, jewelry, or long hair can be caught in moving parts.
- **Use safety apparel and equipment.** Use safety goggles or safety glasses with side shields that comply with current national standards or, when needed, a face shield. Use a dust mask if working in dusty work conditions. This applies to all persons in the work area. Also use non-skid, safety shoes, hardhat, gloves, dust collections systems, and hearing protecting when appropriate.
- **Do not have passengers** on the tow vehicle when pulling the culti-packer.
- **Do not turn too short when pulling the culti-packer.** Turning too short can result in the culti-packer catching a tire and possibly injuring the operator.

CULTI-PACKER USE AND CARE

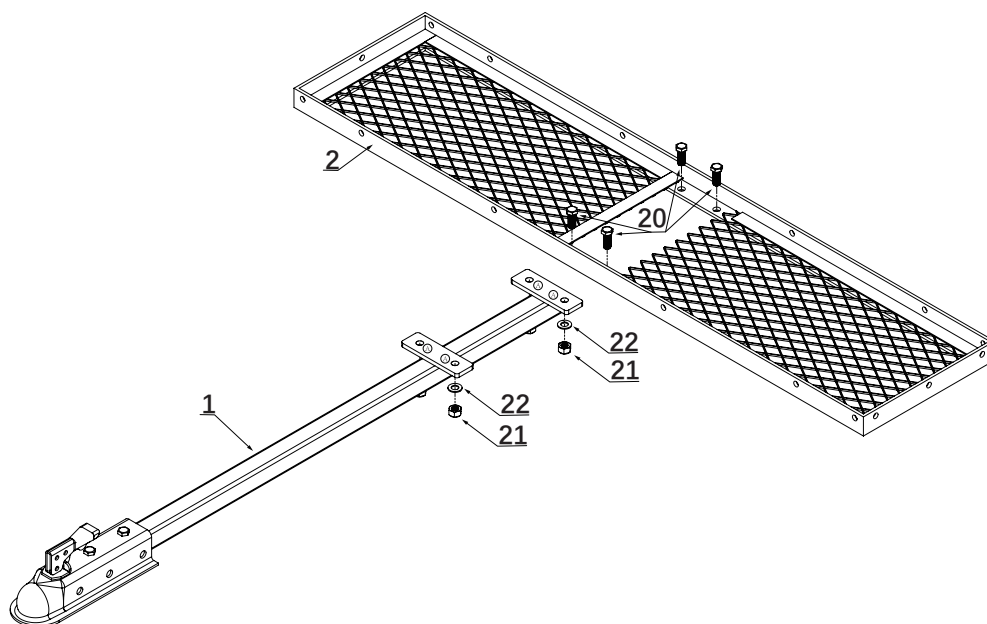
- **Do not modify the culti-packer in any way.** Unauthorized modification may impair the function and/or safety and could affect the life of the equipment. There are specific applications for which the culti-packer was designed.
- **Always check for damaged or worn-out parts before using the culti-packer.** Broken parts will affect culti-packer operation. Replace or repair damaged or worn parts immediately.
- **Store idle culti-packer.** When the culti-packer is not in use, store it in a secure place out of the reach of children. Inspect it for good working condition prior to storage and before re-use.
- **Exercise extreme caution when changing direction on slopes.** Do not operate across slopes. Use up and down only. Do not attempt to operate on steep slopes.
- **Beware of hidden, underground objects.** Contact with hidden objects might cause a sudden stop of the towing vehicle and damage to the culti-packer.
- **Do not operate the vehicle at speeds higher than 5 mph** and use care when backing up.
- **Do not load or unload the tow vehicle** with the culti-packer attached to the towing vehicle.

ASSEMBLY

Step #1:

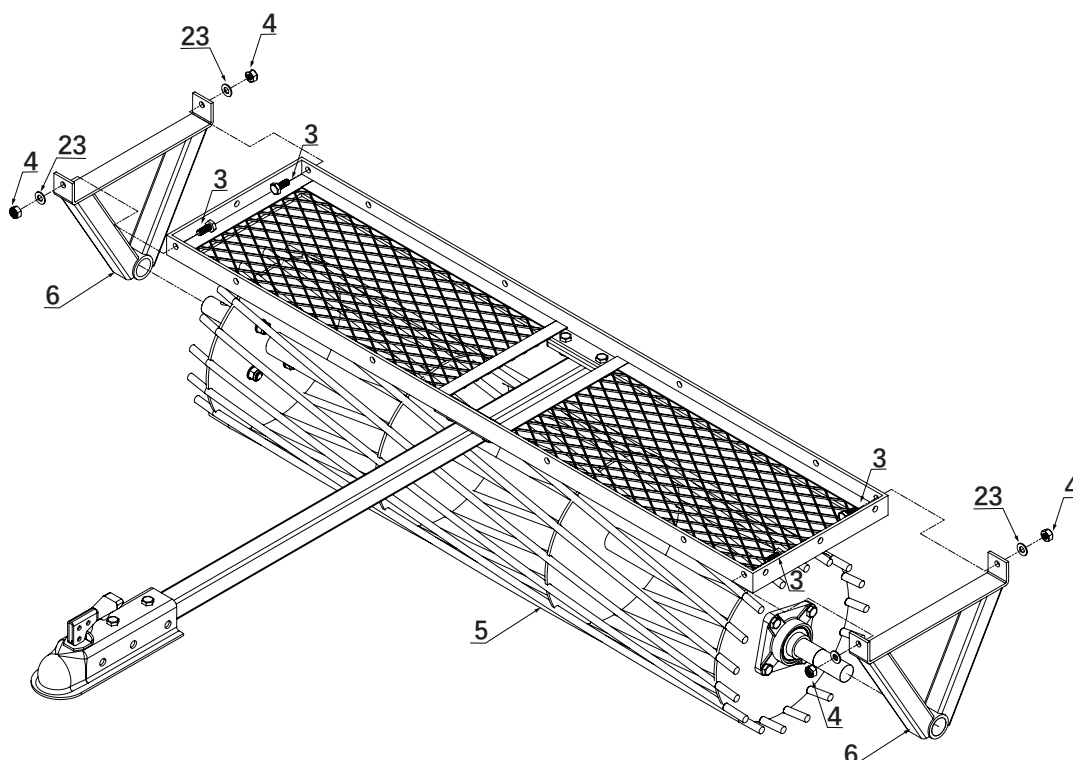
The Coupler is preassembled to the tow bar(#1);

Attach the Tow Bar (#1) to the Frame (#2) using four Hex Bolts (#20) , 4pcs washers (#22) and four Hex Lock Nuts (#21).



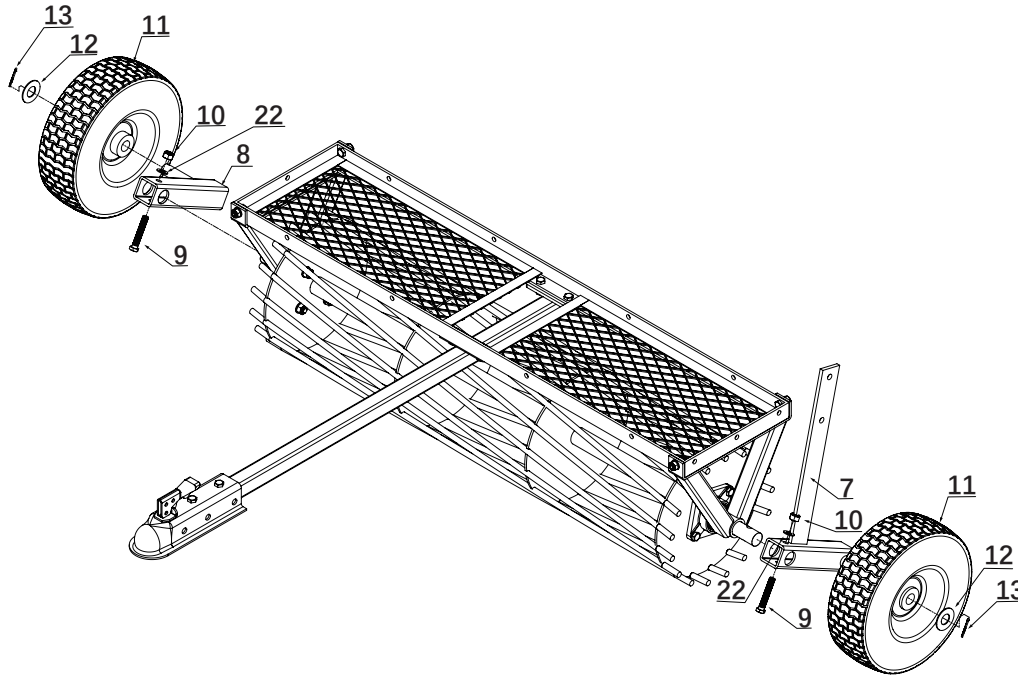
Step #2:

Put the left and right brackets(#6) to the drum spindle(#5), then connect the brackets(#6) to the frame(#2) with four bolts(#3), four washers(#23) and four lock nuts(#4).



Step #3:

Attach the Stub Axle A (#7) and the Stub Axle B (#8) to the Spindle Unit (#5) using two Hex Bolts (#9), two washers (#22) and two Hex Lock Nuts (#10). Attach the Pneumatic Tires (#11) to each Stub Axle (#7 & #8) using two Flat Washers (#12) and two Pins (#13).

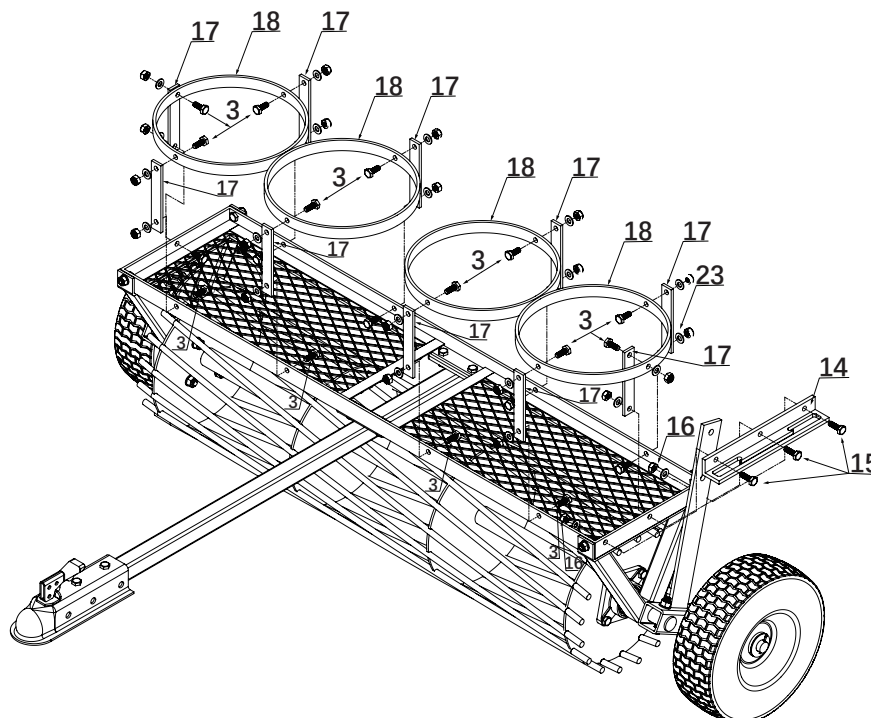


Step #4:

Attach the Support Frame (#18) to the Frame (#2) using ten Connect Plates (#17), nineteen Hex Bolts (#3), nineteen washers (#23) and nineteen Hex Lock Nuts (#4), leave the bolt hole in the middle of the short side rail of the frame (#2) close the swift rod (#19).

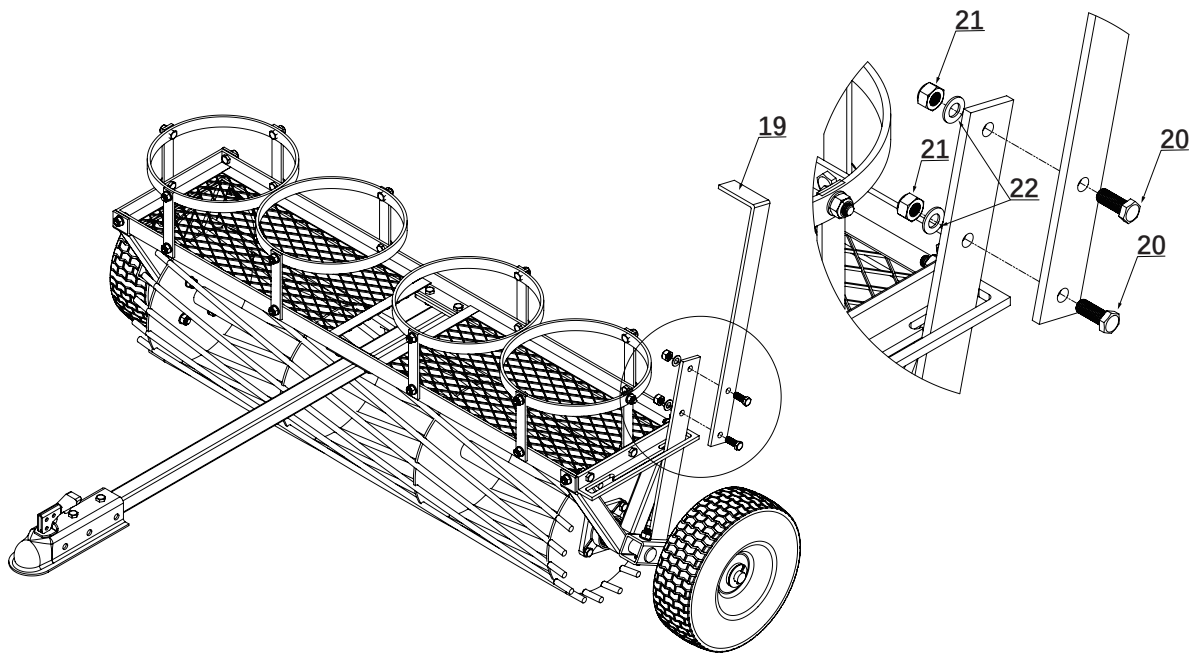
Step #5:

Attach the Adjustable Plate (#14) to the Frame (#2) using three of the Hex Bolts (#15), three washers (#23) and three Hex Lock, the middle bolt need to be used for one connect plate (#17) to frame (#2) with the holt hole left in step #4.



Step #6:

Attached the Switch Rod (#19) to the Stub Axle A (#7) using two Hex Bolts (#20) two washers(#22) and two Hex Lock Nuts (#21).



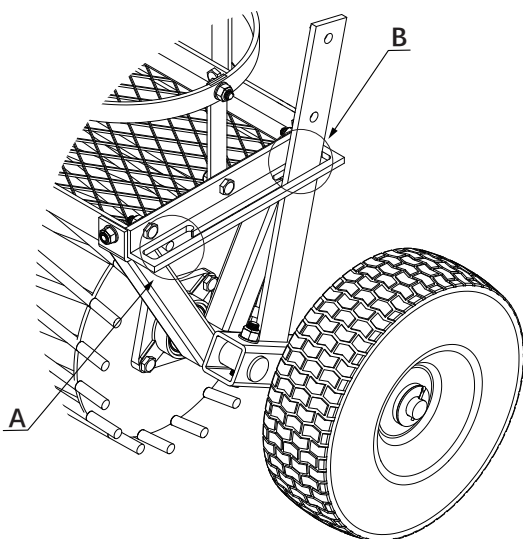
Step #7:

Fully tighten all hardware.

OPERATION

For operation, put the Switch Rod (#15) in the A Position.

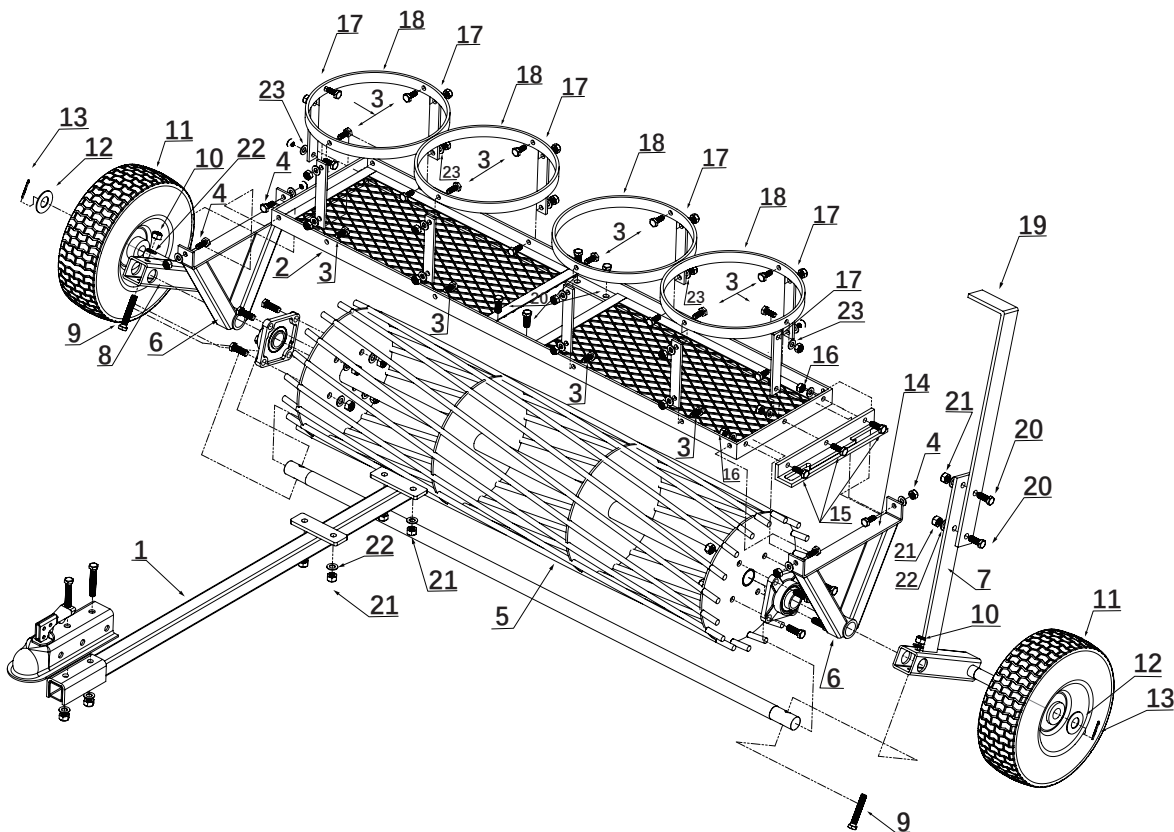
For transportation, put the Switch Rod (#15) in the B Position.



MAINTENANCE

- **Maintain your culti-packer.** It is recommended that the general condition of any culti-packer be examined before it is used. Keep your culti-packer in good repair by adopting a program of conscientious repair and maintenance. If any abnormal vibrations or noise occurs, have the problem corrected before further use. Have necessary repairs made by qualified service personnel.
- **Do not exceed 30 PSI in each wheel.**

PARTS DIAGRAM and LIST:



Part #	Description	Qty.	Part #	Description	Qty.
1	Tow Bar	1	13	Cotter pin	2
2	Frame	1	14	Adjustable Plate	1
3	Hex Bolt, M10x25	23	15	Hex Bolt, M10x30	3
4	Hex Lock Nut, M10	23	16	Hex lock nut, M10	3
5	Roller with spindle and bearings	1	17	Connect Plate	10
6	Bracket	2	18	Support Ring	4
7	Stub axle A	1	19	Swift Rod	1
8	Stub axle B	1	20	Hex Bolt, M12x30	6
9	Hex Bolt, M12x65	2	21	Hex Lock Nut, M12	6
10	Hex Lock Nut, M12	2	22	Washer M12	8
11	Pneumatic tire	2	23	Washer M10	26
12	Washers M25	2			

For technical questions, please call 1-218-943-6296.

WARRANTY

One-year limited parts warranty.



TG

PO BOX 203

Miltna, MN 56354

Made in China