



# **3pt 48" Plug Aerator**

## **OWNER'S MANUAL**



### **WARNING:**

Carefully read and understand all **ASSEMBLY AND OPERATION INSTRUCTIONS** before operating. Failure to follow the safety rules and other basic safety precautions may result in serious personal injury.

**Model # YTF-48PA3PT**

Thank you very much for choosing this product! For future reference, please complete the owner's record below:

Model: \_\_\_\_\_ Purchase Date: \_\_\_\_\_

Save the receipt, the warranty, and these instructions. It is important that you read the entire manual to become familiar with this product before you begin using it.

This product is designed for certain applications only. The manufacturer cannot be responsible for issues arising from modification. We strongly recommend that this product not be modified and/or used for any application other than that for which it was designed. If you have any questions relative to a particular application, DO NOT use the product until you have first contacted us to determine if it can, or should, be performed on the product.

For technical questions, please call **1-218-943-6296**.

## INTENDED USE

Ideal for aerating your compact soil and lawns, allowing nutrients in and keeping your soil and lawns healthy and performing well.

## TECHNICAL SPECIFICATIONS

Item	Description
Category	0 and 1
Working Width	48"
Construction	Steel
Dimensions	55.91"x23.23"x31.89"

## GENERAL SAFETY RULES



**WARNING:** Read and understand all instructions. Failure to follow all instructions listed below may result in serious injury.



**CAUTION:** Do not allow persons to operate or assemble this Plug Aerator until they have read this manual and have developed a thorough understanding of how the Plug Aerator works.



**WARNING:** The warnings, cautions, and instructions discussed in this instruction manual cannot cover all possible conditions or situations that could occur. It must be understood by the operator that common sense and caution are factors that cannot be built into this product, but must be supplied by the operator.

## SAVE THESE INSTRUCTIONS

## WORK AREA

- **Keep work area clean**, free of clutter, and well-lit. Cluttered and dark work areas can cause accidents.
- **Keep children and bystanders** away while operating a **Plug Aerator**. Distractions can cause you to lose control, so visitors should remain at a safe distance from the work area.
- **Be alert of your surroundings**. Using a **Plug Aerator** in confined work areas may put you dangerously close to sharp tools and rotating parts.

## PERSONAL SAFETY

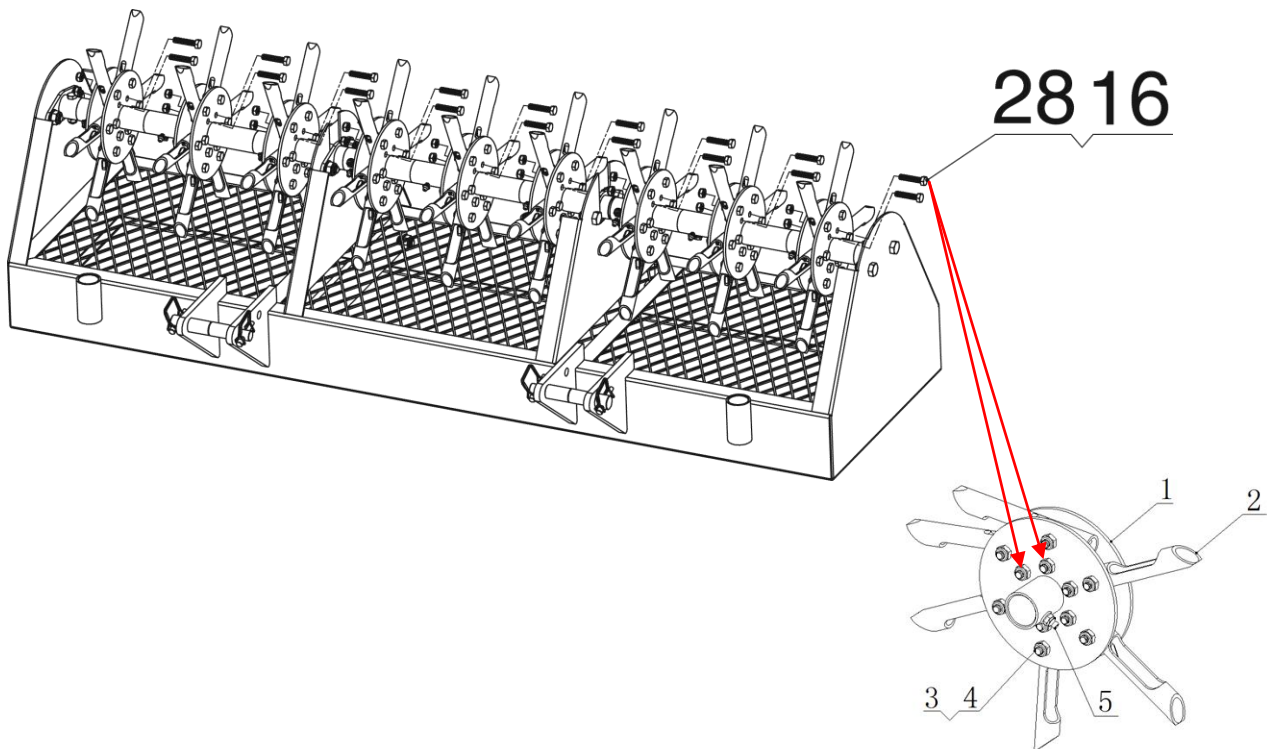
- **Stay alert**, watch what you are doing, and use common sense when using a **Plug Aerator**. Do not use a **Plug Aerator** while you are tired or under the influence of drugs, alcohol, or medication. A moment of inattention while operating a **Plug Aerator** may result in serious personal injury.
- **Dress properly**. Do not wear loose clothing, dangling objects, or jewelry. Keep your hair, clothing, and gloves away from moving parts. Loose clothes, jewelry, or long hair can be caught in moving parts.
- **Use safety apparel and equipment**. Use safety goggles or safety glasses with side shields that comply with current national standards or, when needed, a face shield. Use a dust mask if working in dusty work conditions. This applies to all persons in the work area. Also use non-skid, safety shoes, hard hats, gloves, dust collection systems, and hearing protection when appropriate.

## Plug Aerator USE AND CARE

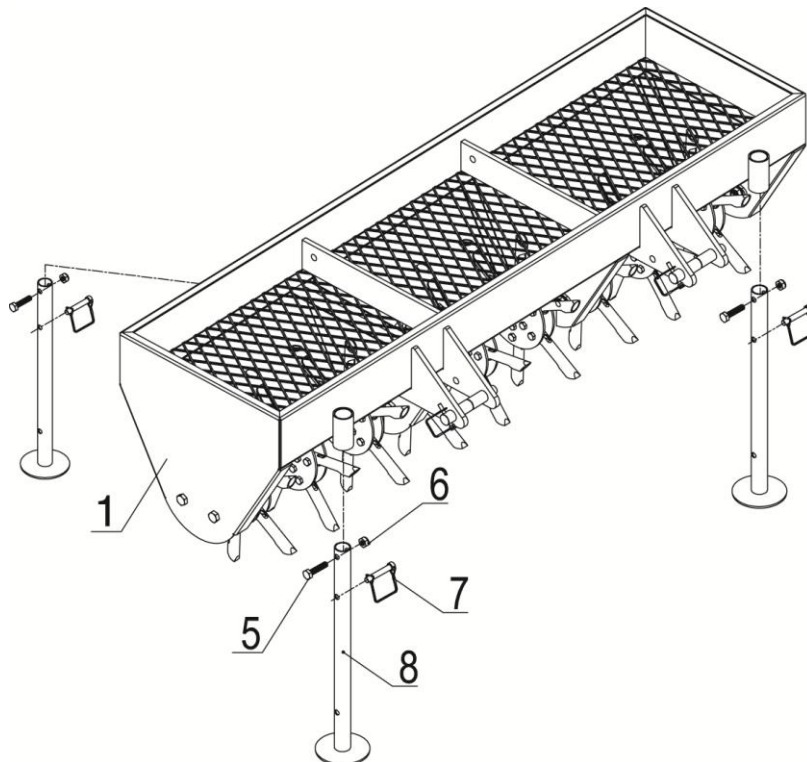
- **Do not modify the Plug Aerator in any way**. Unauthorized modification may impair the function and/or safety and could affect the life of the equipment. There are specific applications for which the **Plug Aerator** was designed.
- **Always check for damaged or worn-out parts before using the Plug Aerator**. Broken parts will affect the **Plug Aerator's** operation. Replace or repair damaged or worn parts immediately.
- **Do not exceed the Plug Aerator load capacity**.
- **Distribute the load evenly**. Uneven loads may cause the **Plug Aerator** to tip, resulting in personal injury to the operator or others.
- **Use the Plug Aerator on flat and level surfaces** capable of supporting the **Plug Aerator** and its maximum load. Pulling or pushing a load on a slanted or uneven surface can result in loss of control.
- **Store idle Plug Aerator**. When **Plug Aerator** is not in use, store it in a secure place out of the reach of children. Inspect it for good working condition prior to storage and before re-use.

## ASSEMBLY INSTRUCTIONS

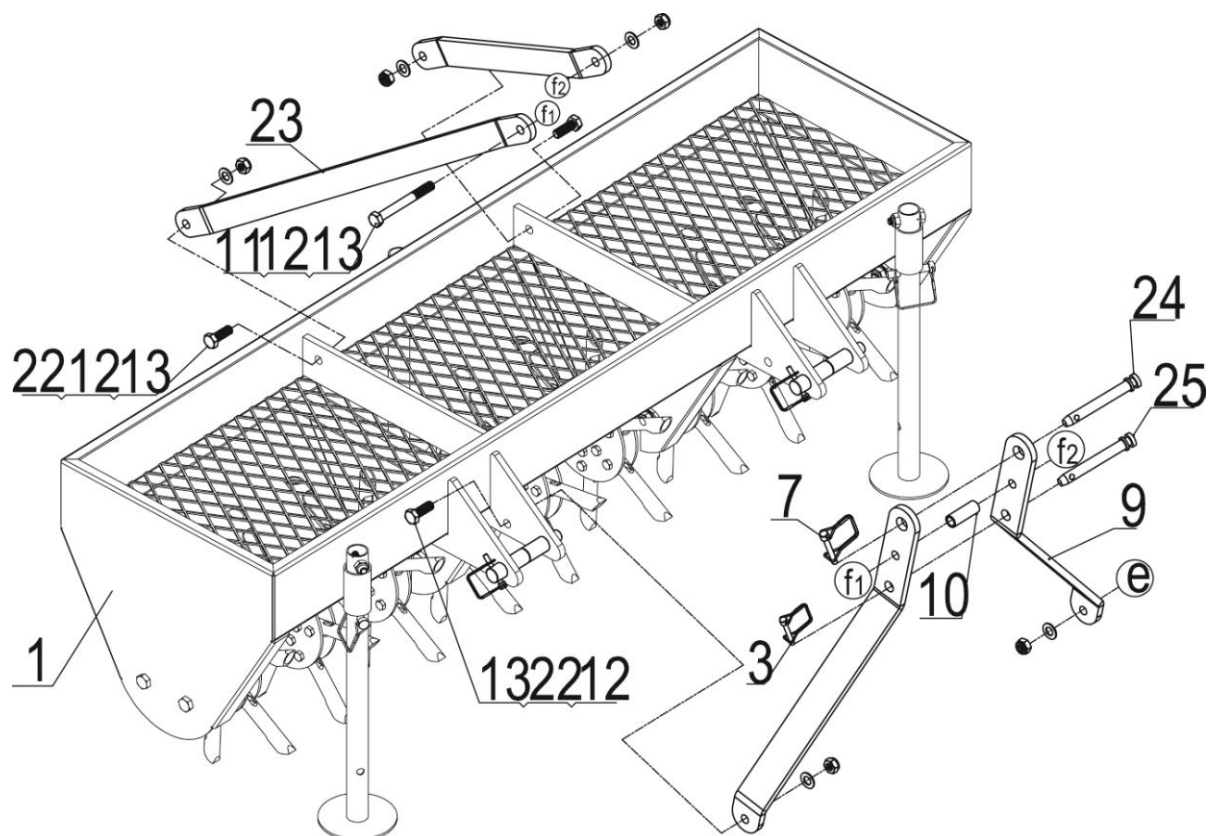
**Step 1:** Take away the pointed two hex bolts M8x40 and nylon lock nuts M8, set the two cutter tooth in correct position, then lock them.



**Step 2:** Insert drive pin (#7) to the support leg (#8), then insert support leg (#8) to the frame (#1) and tighten with hex bolt M10x45 (#5) and nylon lock nut M10 (#6).



- Step 3:**
1. Attach connecting plate (#23) to the frame (#1) using hex bolt M12x35 (#22), flat washer Ø12 (#12) and nylon lock nut M12 (#13).
  2. Attach tractor connecting plate (#9) to the frame (#1) using hex bolt M12x35 (#22), flat washer Ø12 (#12) and nylon lock nut M12 (#13).
  3. Connect the hex bolt M12x110 (#11) through the connecting plate (#23), tractor connecting plate (#9), stop collar (#10), tractor connecting plate (#9) and connecting plate (#23), then tighten with flat washer Ø12 (#12) and nylon lock nut M12 (#13).
  4. Attach hitch pin II (#24) and hitch pin (#25) through tractor connecting plate (#9), separately insert drive pin (#7) and drive pin (#3).



## OPERATION

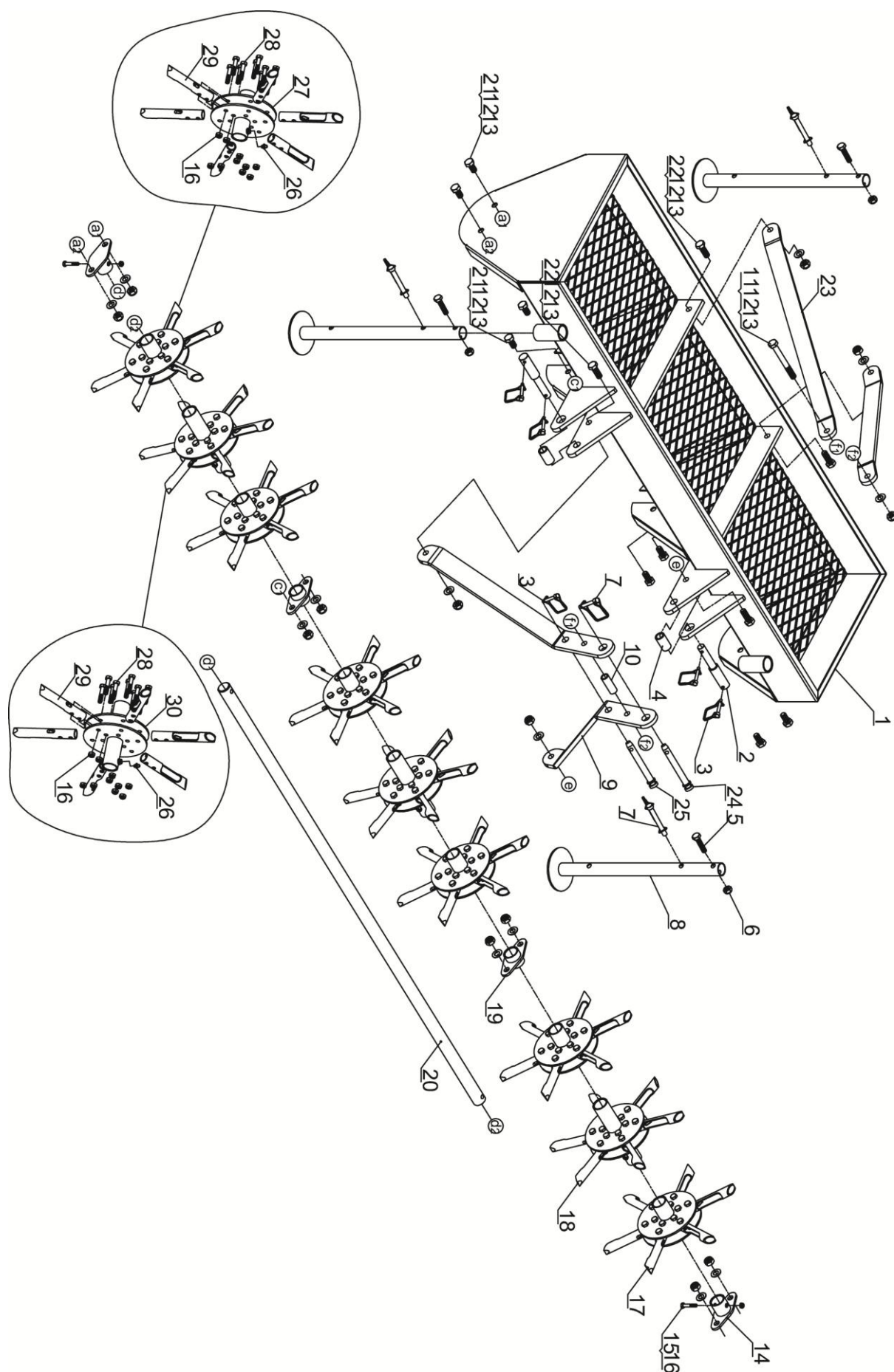
- Connect the aerator to the category 0 or 1 tractor. Lift the aerator. Remove the pins (#7) from the support legs (#8), raise the support legs, and insert pins (#7) back in the raised legs during aerator use.

## MAINTENANCE

- **Maintain your Plug Aerator.** It is recommended that the general condition of any **Plug Aerator** be examined before it is used. Keep your **Plug Aerator** in good repair by adopting a program of conscientious repair and maintenance. If any abnormal vibrations or noise occurs, have the problem corrected before further use. Have necessary repairs made by qualified service personnel.



# PARTS DIAGRAM



## PARTS LIST

Part#	Description	Qty.
1	Frame	1
2	Pin Ø22x134	2
3	Drive Pin Ø6x53	5
4	Pin Sleeve	2
5	Hex Bolt M10x45	3
6	Nylon Lock Nut M10	3
7	Drive Pin Ø9x65	4
8	Support Leg	3
9	Tractor Connecting Pin	2
10	Stop Collar	1
11	Hex Bolt M12x110	1
12	Flat Washer Ø12	13
13	Nylon Lock Nut M12	13
14	Guide Block A	2
15	Hex Bolt M8x45	2
16	Nylon Lock Nut M8	110
17	Short Plug Spool Assembly	6
18	Long Plug Spool Assembly	3
19	Guide Block B	2
20	Axle Shaft	1
21	Hex Bolt M12x25	8
22	Hex Bolt M12x35	4
23	Connecting Plate	2
24	Hitch Pin II Ø19x138	1
25	Hitch Pin Ø16x138	1
26	Oil Cup	9
27	Short Plug Spool Weldment	6
28	Hex Bolt M8x40	108
29	Cutter Tooth	54
30	Long Plug Spool Weldment	3

For replacement parts and technical questions, please call **1-218-943-6296**.



## **WARRANTY**

**One-year limited parts warranty.**



TG  
PO BOX 203  
Miltona, MN 56354  
Made in China