

**LASKO**  
Innovators in Home Comfort

**100**  
YEARS QUALITY  
COMFORT  
DURABILITY

**WIND  
MACHINE<sup>®</sup>  
3300**

**20"  
DIRECTIONAL  
AIR POWER**



*Three High Performance Speeds*

*Rugged Design and Construction*

*Pivoting Head for Directional Air Power*

*Easy-Grip Carry Handle for Portability*

*Energy-Efficient Operation*

*Fully Assembled*



*Model 3300*

**WIND  
MACHINE<sup>®</sup>  
3300**

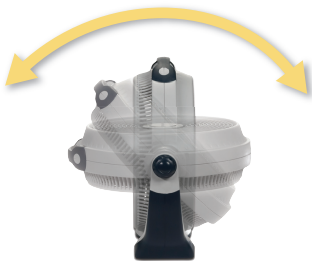
**100** YEARS  
QUALITY  
COMFORT  
DURABILITY

**Made in the USA**  
with Domestic and Imported Parts

**20"  
DIRECTIONAL  
AIR POWER**

Three High  
Performance Speeds

Rugged Design  
and Construction



Pivoting Head for  
Directional Air Power

Easy-Grip Carry  
Handle for Portability

Energy-Efficient Operation

Fully Assembled

ETL Listed



**MODEL 3300 - SPECIFICATIONS**

Product Size .....	25-3/8"L x 7-3/16"W x 23-3/8"H
Box Size .....	25-1/2"L x 7-3/8"W x 23-7/8"H
Shipping Weight .....	10.1 lbs.
Shipping Cube.....	2.68 cu. ft.
UPC .....	0-46013-35140-1

Specifications are subject to change



Patented Safety Fuse Technology  
**The Blue Plug™**