



The World Leader in Phace Protection!

Get'r Done Series Owner's Guide

Model

Bubba and Cletus



Bubba



Cletus



This is the safety alert symbol. It is used to alert you to potential personal injury hazards. Obey all safety messages that follow this symbol to avoid possible injury or death.

Mask, Lens Care, Lens Replacement and Headgear Assembly Instructions

NOTICE:

For your SAFETY - PLEASE read and follow all of these instructions exactly. If you have problems understanding these instructions or have questions, please call 1-866-783-3223.

Caution! Read and follow these instructions EXACTLY for care and cleaning of the lenses.

Summary

The automatic welding mask is a new generation product for labor protection. New and high science technologies such as LCD, optoelectronics detection, solar power, microelectronics, etc. are integrated into it. The automatic welding mask can not only efficiently protect the operator's eyes from injuries caused by arc, but also can make both hands free and allow the user to strike arc accurately. Therefore, the quality of products and work efficiency may be raised considerably. It may be used for various activities such as welding, cutting, spraying and arc gouging, etc.

!WARNING

SAFETY AND GENERAL INFORMATION

- Failure to comply with the enclosed manual may result in injury or blindness.
- **WARNING:** Risk of Ultraviolet Rays. Flying Particles. Wear Safety Goggles (User and Bystanders).
- Materials which come into contact with the wearer's skin could possibly cause allergic reactions to susceptible individuals.
- Scratched or damaged oculars (lenses) should be replaced.
- This is not a Paintball mask! It is a welding helmet.
- Toughened mineral filter oculars shall only be used in conjunction with a suitable backing ocular.
- Read and understand all instructions before using.
- Be sure that the dark shade of the lens in the welding helmet is the correct shade number for your application.
- These helmets and lenses are not suitable for "overhead" welding applications, laser welding, or laser cutting applications.
- Welding helmets are designed to protect the eyes and face from sparks, spatter, and harmful radiation under normal welding conditions.
- This helmet will not protect against explosive devices or corrosive liquids. Machine guards or eye splash protection must be used when these hazards are present.
- Impact resistant, primary eye protection, spectacles or goggles that meet current ANSI specifications must be worn at all times when using this welding helmet.
- Avoid work positions that could expose unprotected areas of the body to spark, spatter, direct and/or reflect radiation.
- Check for light tightness before each use. Before each use, check that the protection plates are clean and that no dirt is covering the sensors on the front of the lens.
- Inspect all operating parts before each use for signs of wear or damage. Any scratched, cracked, or pitted parts should be replaced immediately.
- Do not make any modifications to either the welding lens or helmet, other than those specified in this manual. Do not use any replacement parts other than those specified in this manual. Unauthorized modifications and replacement parts will void the warranty and expose the user to the risk of personal injury.
- If this lens does not darken when striking arc, stop welding immediately and contact representative.
- Do not immerse this lens in water if this model is not waterproof.
- Do not use any solvents on any lens or helmet components.
- The recommended operating pressure is -10°C – 55°C (14°F – 131°F). Do not use this device beyond these temperature limits.
- Failure to follow these warnings and/or failure to follow all of the operating instructions could result in severe personal injury.

Characteristics

The Get'r Done Series automatic welding helmet is equipped with a filter set that can become dark. The filter is transparent before welding so that the operator may observe the work surface clearly. The filter immediately darkens automatically when striking arc. When arc goes out, the filter will become transparent again. The switching time from light to dark is about 0.0001 second. The switching time from dark to light may be set up within 0.1 – 0.9 second.

The mask is equipped with continuous darkness-adjusting unit, so the operator may select an arbitrary dark shade number ranging from #9 to #13.

The Get'r Done Series automatic welding mask gives the operator permanent complete protection against UV/IR: even in transparent conditions. The UV/IR protection level is up to DIN15 at all times. The power is provided by solar cells, so user is exempted from changing battery, turning on or off power and any other operation.

The mask is equipped with 2 sets of photo sensors to sense arc light. In addition, the mask is also has an outer protection plate made of high polymer materials. The plate is wear-resistant, thermo stable, and has no dregs-sticking, thus a very long service life.

Main Specifications

1. Filter dimension	110 x 90 x 8.5 mm
2. View area	97 x 47 mm
3. Light shade number	4
4. Dark shade number	9-13
5. UV/IR protection	upDIN15
6. Time from light to dark	1/10000 s
7. Time from dark to light	0.1-0.9s
8. Sensitivity/Delay	adjustable stepless
9. Power supply	solar cells
10. Operating Temperature	-10°C – 55°C (14°F – 131°F)
11. Warranty	One year
12. Grind function	Yes

Method of Operation

1. Assemble the mask as shown in the construction and assembly figure (page #5)
2. The power supply

The power of the Get'r Done Series helmet is provided by solar cells with two lithium batteries. Turning on or off is automatically controlled by a circuit. You can use this helmet at any time you need and take it away after working without operating any key. Use of this helmet is free from operating switches like a glass filter helmet.

3. Darkness selection

When striking an arc, the observing window darkens immediately. At this moment, the operator adjusts the darkness knob 5 in the direction as shown by the arrow to select the optimum darkness.

4. Delay time selection

By moving the DELAY selector knob (#7 on the rear of the cartridge), the time it takes for the lens to lighten after welding can be altered from 0.1 to about 0.9 seconds.

Turn to MIN: Shortens the time the lens takes to lighten after welding. The shortest time is about 0.1 seconds depending upon the welding point's temperature and the shade set. This setting is ideal for track welding or production welding with short welds.

Turn to MAX: Lengthens the time the lens takes to lighten after welding. The longest time is about 0.9 seconds depending upon the welding point's temperature and the shade set. This setting is ideal for welding at high amperage where there is an after glow from the weld.

5. Sensitivity selection

By moving the SENSITIVITY selector knob (#6 on the rear of the cartridge), the sensitivity to ambient light changes can be altered.

Turn to LO: The photosensitivity decreases.

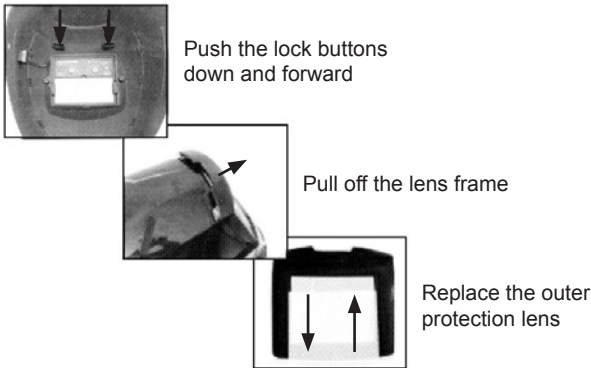
Suitable for high amperage welding and welding in bright light conditions (lamp light or sunlight).

Turn to HI: The photosensitivity increases.

Suitable for low amperage welding and welding in pool light conditions. This setting is also suitable for using with steady arc processes such as TIG welding. If the helmet can be used normally, we suggest using this helmet with a high sensitivity.

6. Because the shape of the human head varies from person to person, the work position and the observing angle are adjustable. The operator may adjust the headband by pressing button (#8) and the segmental positioning plate (#9) to select an appropriate observing angle. By pushing and turning the adjustment screw (#10), the perimeter of the headband can be adjusted.

7. Method of replacing the outer protection lens



8. Welding/Grinding Function

Welding/grinding function can be selected by moving the adjustment knob (#15)

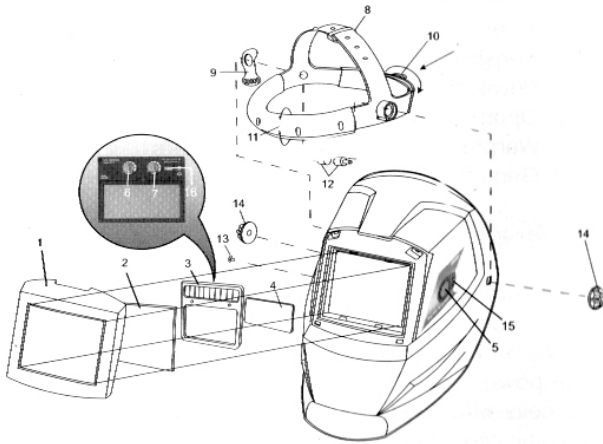
9. Low battery warning light

The light (#16) will flash when the battery is low.

Attention

- Be sure that the helmet is in the correct condition and check it according to the WARNING section.
- There is a liquid crystal valve in the filter; even though it has an inner and outer protection plate, it is important to avoid heavy impacts which could break it.
- The outer protection plate of the helmet should be periodically inspected and cleaned to keep it clear. If a break, crack, pitting, or anything that affects vision occurs, replace the plate.
- In order to operate more efficiently and safely, select the correct shade number.
- If the filter is not a waterproof model, prevent water from coming into contact with it.
- Be sure that the arc light is received completely by the sensor. If it is not, the filter will be light or unstable, which could result in personal injury.
- Only use the automatic filter at temperatures between $-10^{\circ}\text{C} - 55^{\circ}\text{C}$ ($14^{\circ}\text{F} - 131^{\circ}\text{F}$).
- Don't disassemble the filter. If any problems arise, contact customer service.

ASSEMBLY PARTS FOR GET'R DONE SERIES AUTOMATIC WELDING MASKS



1. Lens frame
2. Outer protection lens
3. Automatic filter
4. Inner protection lens
5. Shade knob
6. Sensitivity knob
7. Delay knob
8. Headband adjusting button
9. Segmental positioning plate
10. Headband tightness adjusting knob
11. Sweat band
12. Screw for fixing headband
13. Positioning point for the segmental plate
14. Block nut
15. Welding/grinding function selection knob
16. Low battery warning light

REPLACEMENT PARTS

Not all components are replacement items. When ordering parts, please give the Model number and parts description. Call or write for current pricing:

SFA Companies 10939 N. Pomona Ave. Kansas City, MO 64153, U.S.A.

E-Mail: savephacesupport@sfacompanies.com Tel: (866) 783-3223 Fax: (816) 891-6599

RECOMMENDED SHADE NUMBERS

WELDING PROCESS	CURRENT AMPERES																									
	0.5	1	2.5	5	10	15	20	30	40	50	60	100	125	150	175	200	225	250	275	300	350	400	450	500		
Covered Electrode	Shade 9										10	Shade 11					Shade 12					Shade 13				
	Shade 10					Shade 10					Shade 11					Shade 12					Shade 13					
MIG Plate Welding	Shade 10										Shade 11					Shade 12					Shade 13					
	Shade 10					Shade 10					Shade 11					Shade 12					Shade 13					
MIG Sheet Metal	Shade 9					10					Shade 11					Shade 12					Shade 13					
	Shade 10					Shade 10					11					12					Shade 13					
TIG	Shade 10										11					12					13					
	Shade 10					Shade 10					11					12					13					
MAAG	Shade 10										11					12					13					
	Shade 10					Shade 10					11					12					13					
Arc Gouging	Shade 10										11					12					13					
	Shade 10					Shade 10					11					12					13					
Plasma Cutting	Shade 11										Shade 12					Shade 13					Shade 14					
	Shade 11					Shade 11					Shade 12					Shade 13					Shade 14					
Plasma Welding	Shade 11										Shade 12					Shade 13					Shade 14					
	Shade 11					Shade 11					Shade 12					Shade 13					Shade 14					

Created, Engineered, Designed & Shipped in USA
Made in China and Taiwan

This product meets CSA 290.3-7 Standards.

ONE YEAR LIMITED WARRANTY

SavePhace products undergo a strict quality control inspection for workmanship, function, and safety before leaving the factory. From the date of purchase, **SavePhace** will warranty or repair its products for: one (1) year on its helmet and two (2) years on its the ADF against defects in parts and workmanship. We have a general warranty claim form along with potential request of proof of purchase.

In the unlikely event a problem is experienced with any of our products, a return merchandise authorization (RMA) number must be obtained by contacting us toll-free at 866-783-3223. Each product to be returned must have the item number, description of the problem and proof of purchase. All returns must have a RMA number marked clearly on the outside of the shipping box, and printed RMA form enclosed inside the box. Only SavePhace can determine if product can be repaired or must be replaced.

Except where such limitations and exclusions are specifically prohibited by applicable law, (1) THE CONSUMER'S SOLE AND EXCLUSIVE REMEDY SHALL BE THE REPAIR OR REPLACEMENT OF DEFECTIVE PRODUCTS AS DESCRIBED ABOVE. (2) **SavePhace**. SHALL NOT BE LIABLE FOR ANY CONSEQUENTIAL OR INCIDENTAL DAMAGE OR LOSS WHATSOEVER. (3) ANY IMPLIED WARRANTIES, INCLUDING WITHOUT LIMITATION THE IMPLIED WARRANTIES OF MERCHANTABILITY AND FITNESS FOR A PARTICULAR PURPOSE, SHALL BE LIMITED TO ONE YEAR, OTHERWISE THE REPAIR, REPLACEMENT OR REFUND AS PROVIDED UNDER THIS EXPRESS LIMITED WARRANTY IS THE EXCLUSIVE REMEDY OF THE CONSUMER, AND IS PROVIDED IN LIEU OF ALL OTHER WARRANTIES, EXPRESS OR IMPLIED. (4) ANY MODIFICATION, ALTERATION, ABUSE, UNAUTHORIZED SERVICE OR ORNAMENTAL DESIGN VOIDS THIS WARRANTY AND IS NOT COVERED BY THIS WARRANTY.

Some states do not allow limitations on how long an implied warranty lasts, so the above limitation may not apply to you. Some states do not allow the exclusion or limitation of incidental or consequential damages, so the above limitation or exclusion may not apply to you. This warranty gives you specific legal rights, and you may also have other rights, which vary from state to state.

NOTES: