

## OvaView User Instructions

The OvaView is a scientifically designed, purpose made lamp for inspecting the embryo development during incubation.

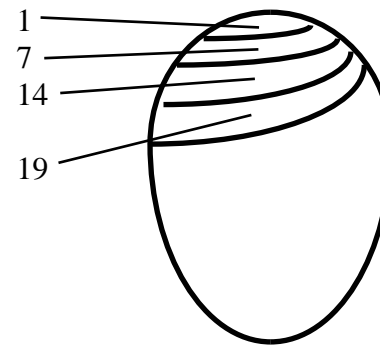
**CAUTION – Never look directly into the light source.**

### Instructions for use.

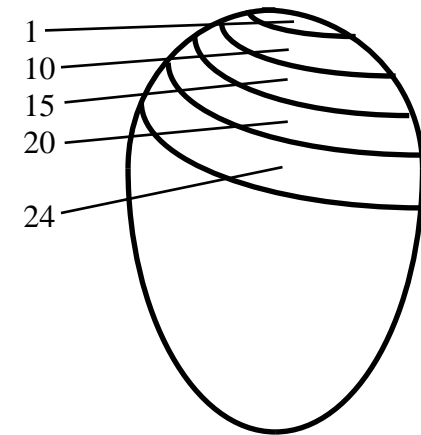
1. Eggs may be examined for fertility after about 7 days. Infertile eggs will appear clear and can be rejected.
2. Air space estimation can be made using the chart. If the airspace is too small reduce humidity and vice versa.
3. The OvaView may be used directly in a darkened room or the OvaScope may be used in other situations.

### Battery replacement.

- Observe correct polarity to prevent leakage or risk of fire
- Do not mix old and new batteries
- Do not use different types of battery at the same time
- For best results use alkaline batteries in the OvaView or rechargeable batteries in the OvaView High Intensity
- Remove the batteries if you do not intend to use the OvaView for a long period



Hen Egg 58g

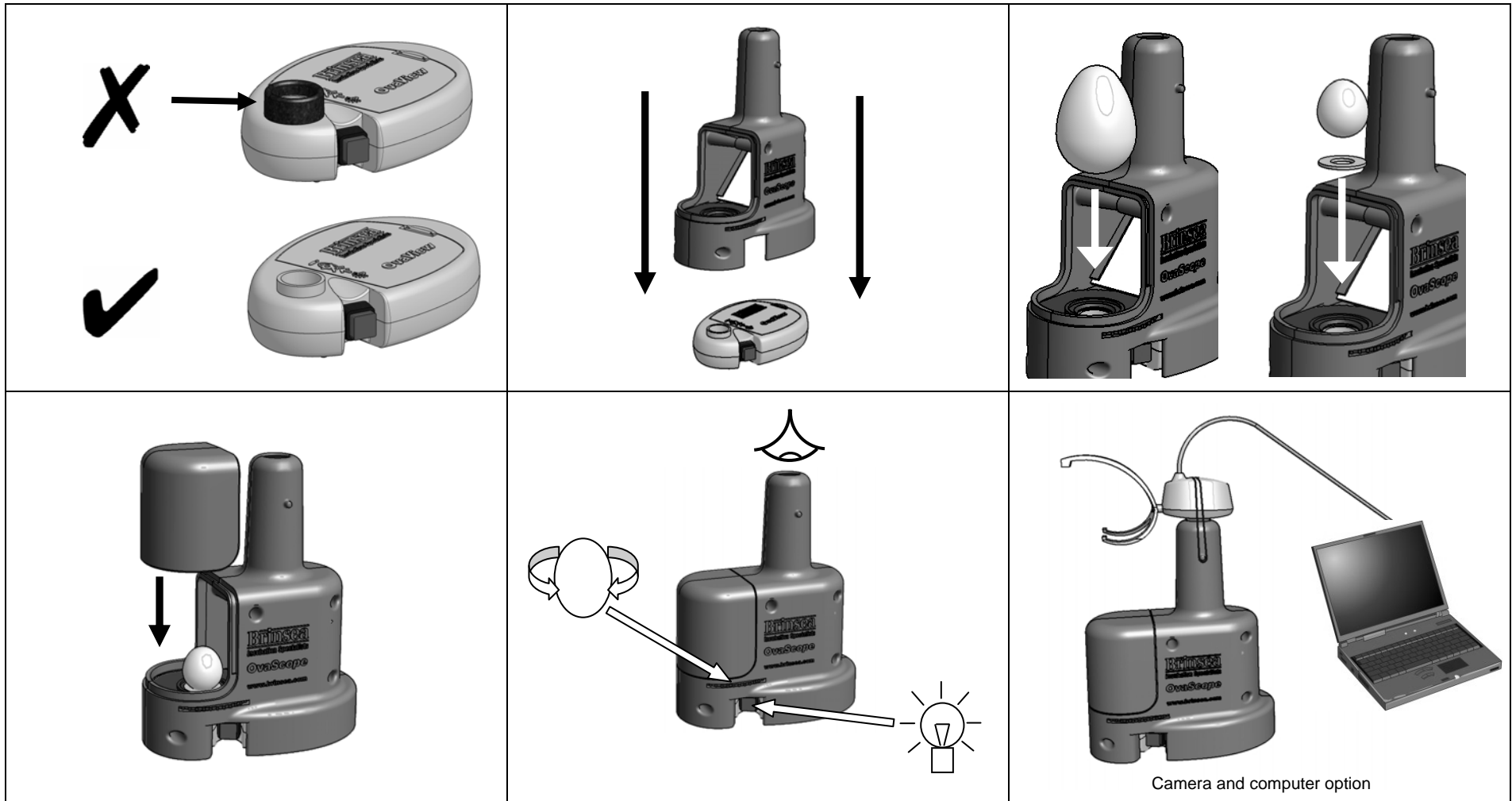


Turkey Egg 85g

|             |                                    |
|-------------|------------------------------------|
|             | <i>OvaView</i>                     |
| Dimensions: | 128 x 83 x 33mm (5" x 3.3" x 1.3") |
| Weight:     | 85g (3 oz)                         |

|  |                                       |
|--|---------------------------------------|
|  | <i>OvaScope</i>                       |
|  | 190 x 153 x 90mm (7.5" x 6.0" x 3.5") |
|  | 155g (5.5 oz)                         |

# OvaScope User Instructions



**Brinsea Products Inc., 704 N Dixie Ave., Titusville, FL 32796-2017 USA.  
Phone. (321) 267-7009 Toll Free 1-888-667-7009 Fax (321) 267-6090  
e-mail Sales@Brinsea.com, website www.Brinsea.com**