

# ECOFLEX®



PRODUCT SHOWCASE  
2017-2018

NeAgePet®

# INNPLACE™ CRATE/TABLE

## EHC SERIES

- Made with ecoFLEX
- Resists moisture
- Doesn't retain odor
- Removable table top for easy cleaning
- Won't warp, twist, splinter, crack
- Color will never fade
- Double latches on large and XL models



ecoFLEX®

New!



Size	Exterior D x W x H (in.)	Recommended Breed
<b>S</b>	23.8" x 18.2" x 22.2"	Chihuahua, Pomeranian
<b>M</b>	29.8" x 21.1" x 25.2"	Terrier, Beagle, Pug
<b>L</b>	36.1" x 24.1" x 28"	Bulldog, Spaniel
<b>XL</b>	42.6" x 27.6" x 30.9"	Golden Retriever, Labrador

- Espresso, EHC402
- Russet, EHC403
- Antique White, EHC404
- Nantucket Gray, EHC405

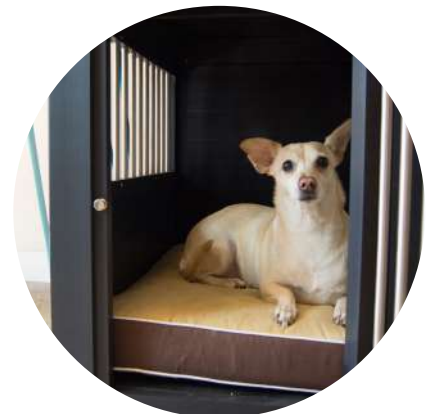


## CUSTOM FIT (BED) CUSHION FOR CRATES

### 3.5" THICK CUSHION WITH MACHINE WASHABLE COVER

### CSH400 SERIES

Bed/Crate Size	Tan and Brown Cushion	D x W x H (in.)
<b>S</b>	CSH400-S	15.5" x 21.5" x 3.5"
<b>M</b>	CSH400-M	19" x 26.5" x 3.5"
<b>L</b>	CSH400-L	21" x 33" x 3.5"
<b>XL</b>	CSH400-XL	24" x 39" x 3.5"



D: from side to side; W: from front to back

# DINERS AND FEEDING STATIONS

- All diners include two stainless steel bowls
- All diners wipe clean with a damp cloth
- Dinners are ergonomically designed for a correct feeding position
- Space saving design with sealed storage fits up to 25 lbs of dry food (Brea™ and Piedmont™)



# ECOFLEX®



New!

## PIEDMONT STORAGE DINER EHHF300 SERIES

Size	Exterior D x W x H (in.)	Recommended Breed
One size	11.8" x 25.2" x 15.6"	Golden Retriever, Labrador

Russet, EHHF303XL

Antique White, EHHF304XL

Nantucket Gray, EHHF305XL

## BREA PANTRY DINER EHPD SERIES

Size	Exterior D x W x H (in.)	Recommended Breed
One size	24.3" x 13" x 34"	Terrier, Beagle, Labrador

Espresso, EHPD402

Russet, EHPD403

Antique White, EHPD404



New!



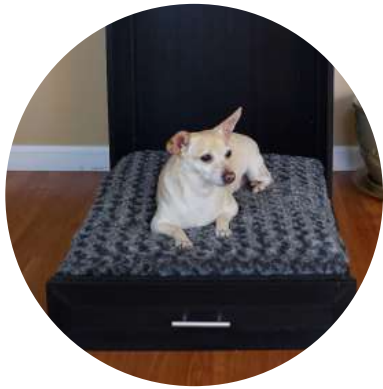
## HILO™ RAISED DOUBLE DINER EHHF200 SERIES

Size	Exterior D x W x H (in.)	Recommended Breed
L	10.4" x 24.8" x 9.5"	Bulldog, Spaniel




Espresso, EHHF202

Russet, EHHF203




D: from side to side; W: from front to back



### STANDARD

-  Espresso, EHMB822
-  Antique White, EHMB824
-  Nantucket Gray, EHMB825

### New! JUMBO

-  Espresso, EHMB852
-  Antique White, EHMB854
-  Nantucket Gray, EHMB855

## MURPHY™ BED EHMB8 SERIES

Size	Exterior D x W x H (in.)	Recommended Breed
<b>Standard</b>	13.1" x 23.7" x 33.8"	Chihuahua, Bulldog
<b>Jumbo</b>	13.1" x 39.4" x 33.8"	Golden Retriever, Labrador

- Made with ecoFLEX
- Doesn't retain moisture, odor
- Wipes clean with a damp cloth
- Includes 3" thick memory foam pad
- No tools, easy assembly



## MANHATTAN™ BED EHHB200 SERIES

Size	Exterior D x W x H (in.)	Recommended Breed
<b>L</b>	22.3" x 34.4" x 13.4"	Chihuahua, Bulldog
<b>XL</b>	26.5" x 38.6" x 14.8"	Golden Retriever, Labrador

- Matches InnPlace Crate/Tables in style and color
- Includes 3" thick memory foam pad with removable and washable cover



Espresso, EHHB202



Antique White, EHHB204



Nantucket Gray, EHHB205



Espresso, EHHB102



Russet, EHHB103



## MY BUDDY'S BUNK™ EHHB100 SERIES

Size	Exterior D x W x H (in.)	Recommended Breed
<b>S</b>	16.6" x 22.2" x 7.1"	Chihuahua, Pomeranian
<b>M</b>	20.2" x 30.6" x 8.7"	Terrier, Beagle, Pug
<b>L</b>	22.3" x 34.4" x 10.2"	Bulldog, Spaniel

- Made with ecoFLEX
- Includes plush fleece cushion
- Cushion cover is machine washable
- Available in two different colors

D: from side to side; W: from front to back

New!

### ASPEN™ PET BUNK BEDS EHBB400 SERIES



- Made with ecoFLEX
- XL Beds for dogs up to 70 lbs
- 100% non-toxic
- Easy, no tools assembly
- Dimensions: 27.2”D x 57.1”W x 36.2”H

Espresso, EHHBB402



Antique White, EHHBB404



Nantucket Gray, EHHBB405



### MALIBU™ PATIO BED EHPB500 SERIES

New!

- Made with ecoFLEX
- For outdoor use
- Canopy protects pets from harsh sunlight
- Waterproof, machine washable covers
- Raised platform provides drainage
- Dimensions: 30.9”D x 42.5”W x 33.5”H



Espresso, EHPB502



Nantucket Gray, EHPB505



New!

### SUNDOWN™ NIGHTSTAND BED EHNB600 SERIES



- Made with ecoFLEX
- Doubles as a stylish nightstand
- XL Bed for dogs up to 70 lbs
- Removable, machine washable pad cover
- Dimensions: 22”D x 30.7”W x 27.2”H

Espresso, EHNB602



Antique White, EHNB604



Nantucket Gray, EHNB605



D: from side to side; W: from front to back

# ECOFLEX LITTER LOO® END TABLE

- Made with ecoFLEX
- Conceal unsightly litter pan
- Doubles as a stylish end table
- Features flip-down magnetic latch door
- Non-absorbent, does not retain odor
- Easy to clean with a damp cloth
- Available in standard and jumbo sizes



Size	Exterior D x W x H (in.)	Interior L x W x H (in.)
<b>Standard</b>	23.8" x 18.5" x 22.1"	21" x 15.7" x 14"
<b>Jumbo</b>	30" x 24" x 28.9"	27.1" x 21.3" x 18.3"

## STANDARD

- Espresso, EHLB801-02
- Russet, EHLB801-03
- Antique White, EHLB801-04
- Nantucket Gray, EHLB801-05

## JUMBO

- Espresso, EHLB802-02
- Russet, EHLB802-03
- Antique White, EHLB802-04
- Nantucket Gray, EHLB802-05



### STANDARD

(LITTER BOX NOT INCLUDED)



### JUMBO

## SCOOPY THE CAT IND003 SERIES

- Espresso, IND003B
- White, IND003W



- Dimensions: 7"D x 6.5"W x 15"H

## ECOFLEX ALBANY™ OUTDOOR CAT HOUSE ECTH350



- Dimensions: 21.8"D x 19.1"W x 20.2"H

D: from side to side; W: from front to back

# ALL NEW CAT PRODUCTS IN A SLEEK, GRAY FINISH



# ECOFLEX®

- Made with ecoFLEX
- Non-absorbent; does not retain odor; easy to clean
- Double as stylish end tables and shelves
- Add on replaceable surface pads

**New!** **KITTY KUBE™**  
**EHKK4 SERIES**

- Espresso, EHKK402
- Antique White, EHKK404
- Nantucket Gray, EHKK405



- Hidden replaceable scratch pad
- Dimensions: 20.1"D x 20.1"W x 27.2"H

**KITTY KORNER™**  
**EHKK5 SERIES** **New!**

- Espresso, EHKK502
- Antique White, EHKK504
- Nantucket Gray, EHKK505



- Dimensions: 14.6"D x 22.4"W x 28"H

**KITTY KLIMBER™**  
**EHKK6 SERIES** **New!**



- Espresso, EHKK602
- Antique White, EHKK604
- Nantucket Gray, EHKK605

- Perch and play fun structure
- Dimensions: 16.5"D x 16.5"W x 60"H

**New!** **KITTY KONDO™**  
**EHKK7 SERIES**

- Espresso, EHKK702
- Antique White, EHKK704
- Nantucket Gray, EHKK705



- Modular panels for easy customization
- Dimensions: 16.1"D x 49.2"W x 50"H

D: from side to side; W: from front to back



Maple, Standard Size, EHRH002

Nantucket Gray, Jumbo, EHRH005



◀ **PARK AVE™ HUTCH**  
**EHRH SERIES**



- Non-absorbent, odor resistant, easy to clean
- Non-rust stainless steel wire top for full ventilation
- Scratch resistant polycarbonate front view
- Optional rollers for ease of movement
- Standard: 19.7”D x 39.4”W x 23.6”H
- Jumbo: 23.6”D x 43.3”W x 23.6”H

**HUNTINGTON™ TOWNHOUSE** ▶  
**ECORH203**



- Never rust, stainless steel wire
- Doesn't retain odor nor absorb moisture
- Easy to clean pull-out drawer
- Sized for 2 compatible bunnies
- Separate, closed off denning space
- Dimensions: 31.6”D x 39.4”W x 48”H



Maple, ECORH203



Maple, ERH303

Nantucket Gray, ERH305



◀ **COLUMBIA™ RABBIT HUTCH**  
**ERH303**



- Never rust, stainless steel wire
- Doesn't retain odor nor absorb moisture
- Roof flips open for easy cleaning
- Separate, closed off denning space
- Dimensions: 19.5”D x 43.9”W x 29.5”H

D: from side to side; W: from front to back





# ECOFLEX®

- Backed with a 10 year warranty
- Weather-proof, easy to clean
- Won't warp, crack or split
- Doesn't retain moisture, odor
- Elevated floor and step-in design
- Flow-through ventilation
- No-tool, easy assembly

New!

## THERMOCORE™ CANINE CABIN II ECO705XL



- Thermocore reflective technology provides insulation during cold weather

## THERMOCORE CANINE COTTAGE ECO505XL



## RUSTIC STYLE LODGE ECO203



## BUNK HOUSE STYLE ECO103



## SANTA FE™ CHALET ECO204XL-BRN

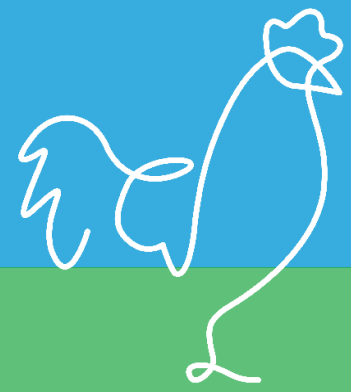


Model	Exterior D x W x H (in.)	Recommended Pet Size
ECO103L	36.3" x 31.3" x 36.2"	up to 80 lb
ECO103XL	36" x 42.2" x 37.6"	up to 150 lb
ECO203M	29.2" x 36.2" x 25.8"	up to 40 lb
ECO203XL	32.5" x 42.5" x 29.5"	up to 140 lb
ECO203 JUMBO	39" x 46.3" x 37.4"	up to 200 lb
ECO204XL-BRN	41.9" x 53.3" x 30.2"	up to 140 lb
ECO505XL	42.1" x 36.6" x 39.4"	up to 150 lb
ECO705XL	35.4" x 46.5" x 33.5"	up to 150 lb

D: from side to side; W: from front to back



# URBAN FARMING



- Made of ecoFLEX material with 10-year warranty.
- Doesn't absorb urine or feces. Odor resistant.
- Predator resistant latches

## FONTANA™ BARN ECHK103\_B SERIES



- Red, ECHK103\_B-RD
- Maple, ECHK103\_B



- Dimensions: 29.4"D x 52.4"W x 29.1"H
- Suitable for up to 6 hens

## FONTANA PEN ECHK103\_P



- Dimensions: 34"D x 47"W x 24.5"H

## JUMBO FONTANA PEN ECHK503\_P



- Dimensions: 41.1"D x 59.8"W x 29.3"H

## JUMBO FONTANA BARN ECHK503\_B



- Red, ECHK503\_B-RD
- Maple, ECHK503\_B



- Dimensions: 54.1"D x 46.3"W x 40.1"H
- Suitable for up to 12 hens

D: from side to side; W: from front to back

New!

### MONTEREY™ CHICKEN BARN ECHK805



- Additional venting for chickens
- Features two doors for easy access
- Houses up to six chickens comfortably
- Dimensions: 28.9”D x 54.1”W x 32.9”H

Nantucket Gray, ECHK805

New!

### SONOMA™ CHICKEN COOP ECHK604



- Houses up to 4 birds comfortably
- Dimensions: 28.9”D x 81.6”W x 41.7”H

Red, ECHK604

New!

### HAMPTON™ CHICKEN COOP ECHK705



- Houses up to 4 chickens comfortably
- Dimensions: 29.9”D x 74.8”W x 46.5”H

Nantucket Gray, ECHK705

D: from side to side; W: from front to back

# ecoFLEX®

**ecoFLEX is a New Age Pet & Garden proprietary wood/polymer composite (WPC) material made by grinding wood fibers and recycled hard plastic parts into a fine powder that is then formed into a variety of panels used in our products.**

**ecoFLEX combines all the benefits of wood and polymer components to create a material with a long list of consumer benefits including extreme durability and resistance to wear and tear from natural causes. Because of its ability to resist dry rot, mold, insect infestation, moisture and weathering, our products designed for outdoor use carry a 10-year warranty that covers both defect and deterioration from natural causes. ecoFLEX is 100% non-toxic. There is nothing in ecoFLEX to harm you or your pets.**

**The color is in the panel, not the surface application. This limits unsightly fading and discoloration. ecoFLEX products won't turn ugly gray like wood based products will. Additionally, ecoFLEX will never warp, split, crack or twist in use. It doesn't expand or contract like wood so connections are always tight.**

**With an extremely low level of absorption, ecoFLEX is easy to clean as most spills or droppings on the surface are easily wiped away. No odors are ever retained in ecoFLEX, as the material does not absorb any kind of moisture.**

**All New Age Pet and New Age Garden products were designed with the consumer and the health of your pet and family in mind. All of our products are easy to assemble and never require any tools to put together.**

**NewAgePet® • NewAgeGarden™**

Pinta International, Inc (dba New Age Pet; New Age Garden)  
25063 Viking Street, Hayward CA 94545  
510-887-5976 | [www.newagepet.com](http://www.newagepet.com) | [info@newagepet.com](mailto:info@newagepet.com)