

# Mod Thermo-Kitty Shelter™

## Care & Instructions

Made in China  
K&H Manufacturing, LLC  
Colorado Springs, CO  
www.khmf.com | (719) 591-6950



**Thank you for purchasing K&H Manufacturing's Mod Thermo-Kitty Shelter™.**

When used correctly, your Mod Thermo-Kitty Shelter™ should provide years of hassle free warmth for your pet. Your Mod Thermo-Kitty Shelter™ is intended for use indoors and outdoors. **Its unique heating system is designed to become warm, not hot.** The Mod Thermo-Kitty Shelter™ is designed for use with animals only.

**WARNING:** This is an electrical product. Read all directions and precautions carefully before operating. Failure to properly follow all directions and instructions may lead to electrical shock or fire which could cause serious bodily injury.

### For household use Only

#### Important safeguards

When using electrical appliances, basic safety precautions should always be followed including the following:

- 1** **Read all instructions.**
- 2** To protect against electrical hazards, **DO NOT** immerse cord, plug, or appliance in water or other liquid.
- 3** **Close supervision is necessary** when used by or near children.
- 4** **ALWAYS** unplug from outlet when not in use.
- 5** **DO NOT** operate any electrical appliance with a damaged cord or plug, or if the appliance malfunctions or has been damaged in any way. **RETURN** all malfunctioning appliances to the factory for examination.
- 6** **DO NOT** use appliance for anything other than its intended use.
- 7** **DO NOT PUNCTURE PLASTIC HOUSING FOR ANY REASON.**
- 8** For use with 110-120 volt AC **ONLY**.
- 9** **DO NOT** cover your SMALL ANIMAL HEATED PAD™ with blankets or materials other than a fleece K&H LECTRO-COVER. Other coverings may not allow heat to radiate properly and could cause pad failure.
- 10** **When placing the pad in an enclosed area such as your Mod Thermo-Kitty Shelter™, be sure pad covers no more than half of the floor space so your pet has the option of sleeping on or off the SMALL ANIMAL HEATED PAD™.**
- 11** When used outside your home, this unit must be plugged into a properly grounded electrical outlet rated for outdoor use. If you do not have a properly grounded outlet, contact a certified electrician to have one installed.
- 12** Always make sure the cord exits your pet's enclosure. Keep cord out of shelter.

### INSTRUCTIONS:

For the included Small Animal Heated Pad™ when used with or without the Mod Thermo-Kitty Shelter™

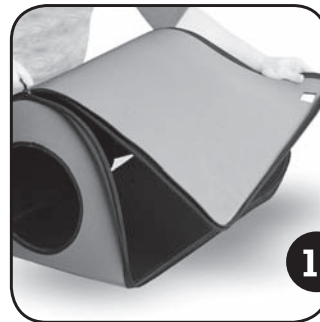
- 1** Place directly on a hard, flat surface inside the Mod Thermo-Kitty Shelter™. Area chosen should be a sheltered area out of direct sun, rain or snow.
- 2** When used on a wooden surface, the holes in the corners of the SMALL ANIMAL heated pad may be used with screws to anchor the pad to keep from sliding.
- 3** When used on a wire surface, the holes in the corners of the SMALL ANIMAL HEATED PAD™ may be used with wire to anchor the pad to keep from sliding or moving.
- 4** Be sure to have the pad up against a wall so cord exits shelter immediately. Never allow the un-shielded portion of the cord inside pet's enclosure.
- 5** Plug into 110-120 volt AC outlet. Allow up to 30 minutes for the SMALL ANIMAL HEATED PAD™ to warm. The unit will feel slightly warm to the touch. When an animal lies on it, the pad will reach a maximum temperature of approximately 102 degrees F. The built in thermostat will automatically regulate the temperature.
- 6** Unplug, clean, and store pad when not in use.

### Care Instructions:

Your SMALL ANIMAL HEATED PAD™ may be cleaned with a damp cloth when unplugged. The unit may be plugged in when the plug is thoroughly dry. Wipe MOD THERMO-KITTY SHELTER™ clean with a damp cloth. Machine wash on gentle cycle and line dry the included fleece cover.

### PUTTING TOGETHER YOUR MOD THERMO-KITTY SHELTER™

- (1)** Unpack your Mod Thermo-Kitty Shelter™. Match the bottom and top pieces together. Finding the zipper ends. Slowly and carefully begin zipping your shelter together. Stop zipping together when you get to the back.
- (2)** Place the Small Animal Heated Pad™ inside the included free fleece cover.
- (3)** Then slide inside of the Mod Thermo-Kitty Shelter™. **(4)** Feed the cord through the hole cut into the shelter. **(5)** Carefully zip the remainder of the Mod Thermo-Kitty Shelter™ together.



### K&H Limited One Year Warranty

**Our warranty is as follows:** K&H Manufacturing warrants to the original consumer, that this product will be free of defects and workmanship for a period of one year from the date of purchase. The manufacturer's liability hereunder is limited to replacement of the product. This warranty is void if the product has been damaged by accident, unreasonable use, neglect, tampering, or other causes not arising from defects in material or workmanship.

**To exercise your warranty:** If, during the warranty period, your product malfunctions, return it to the place of purchase with your **original purchase receipt**. If this cannot be done, return the product, postage prepaid, to K&H Manufacturing, with **dated proof of purchase or original date receipt**. A return authorization number, obtained by calling (719) 591-6950 must accompany all returns to manufacturer. Please include a note explaining the problem when returning the product.