

REMCO

I N D U S T R I E S

AGRICULTURAL AND
INDUSTRIAL PUMPS



THE #1 NAME IN PUMP EQUIPMENT

www.remcoindustries.com

REMCO

I N D U S T R I E S

OUR FAMILY OF PUMPS ARE ALWAYS READY TO PERFORM.

Successfully sourcing quality fluid handling equipment is no longer impossible. Industry professionals choose Remco first because of our commitment to pro-level quality, engineering, and customer service.

Field proven means exactly that.

Every component of every Remco product has earned its pedigree through relentless field use and refinement.

Remco takes nothing for granted. Every product is tested at the factory to ensure it meets our rigorous standards of quality and performance.

American made—a defining characteristic that speaks for itself.

Remco Professional Grade quality starts with our engineers' vision to produce fluid handling equipment that excels in performance and reliability, and surpasses the end user's expectations.

RV, Towing, Ag, Industrial, Filtration or Custom, the Remco mission succeeds only when our customer's mission succeeds. Our products are setting new industry standards, and so is the Remco commitment to customer service and satisfaction.





Remco.

Committed to delivering professional grade pump solutions.

The Remco line of products represents our enduring commitment to deliver exceptional products that power our customers' success.

The Remco approach to solving your pump challenges starts with a deep understanding of the demands our customers face every day in the shop and in the field.

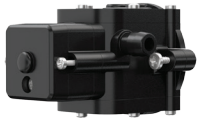
A powerful vision that guides our promise to deliver excellence, the Remco line of professional grade pumps represent the quality and principles upon which we continually judge ourselves, our products and our customers' continued success.

This is the Remco commitment to pumping excellence.

REMCO

I N D U S T R I E S

PUMP INFORMATION



Type

2 chamber diaphragm pump, self priming, capable of being run dry

Mode

Demand / Bypass

Liquid Temperature

110°F (43°C)

Priming Capabilities

4 feet (1.2 m) suction lift

Max Pressure

40 PSI (2.8 bar)

Weight

2.0 lbs (1.0 kg)

Inlet/Outlet Ports

3/8" hose barb

Weight

1.25 lbs (.57 kg)

MOTOR INFORMATION



Leads

18 AWG, 4.5" long with 2-Pin connector

Duty Cycle

Intermittent

Compact design



Heavy-duty demand switch



Can run dry



Quiet operation



Industry standard mount pattern



2200

Economy Plus+ SERIES



The Economy Plus 2200- proves that big things come in small packages.

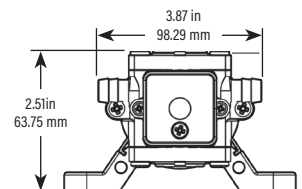
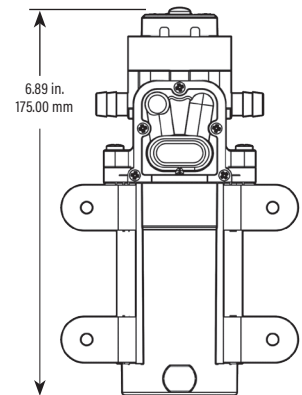
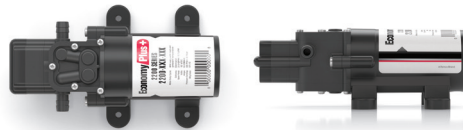
Typical Applications:

• Water Treatment/RO • Beverage/Food service • Distillation Equipment
• Agricultural Spraying • General Industrial • Automotive

2200 STANDARD PUMP CONFIGURATIONS

Item	GPM	Controls	PSI	Diaphragm	Ports	Voltage
						2240-1B1-
10E	1.0GPM	DEMAND	40	SANTOPRENE	3/8"HB	12 VDC

Other configurations available, please consult factory



2200 SERIES PUMP PERFORMANCE

2240-1B1-10E			
PSI	GPM	LPM	AMPS
OPEN	1.00	3.79	1.75
10	0.85	3.22	2.00
20	0.75	2.84	2.25
30	0.65	2.46	2.50
40	0.60	2.27	3.00

Actual performance may vary based on pump configuration.

2400

Economy Plus +
SERIES



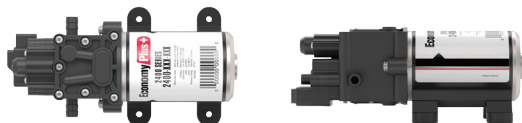
The Economy Plus 2400-performance meets quality in an affordable pump.

Typical Applications: • Water Treatment/RO • Beverage/Food service • Distillation Equipment
• Agricultural Spraying • General Industrial • Automotive

2400 STANDARD PUMP CONFIGURATIONS

Item	GPM	Controls	PSI	Diaphragm	Ports	Voltage
						2452-1H1-
1.6 GPM						
10B	1.6 GPM	DEMAND/BYPASS	80	SANTOPRENE	3/8" HB	12 VDC
2452-1H1-10B	1.6 GPM	DEMAND/BYPASS	100	SANTOPRENE	3/8" HB	12 VDC
2452-1H1-20B	1.6 GPM	DEMAND/BYPASS	80	SANTOPRENE	3/8" HB	24 VDC
2452-1H1-20B	1.6 GPM	DEMAND/BYPASS	100	SANTOPRENE	3/8" HB	24 VDC

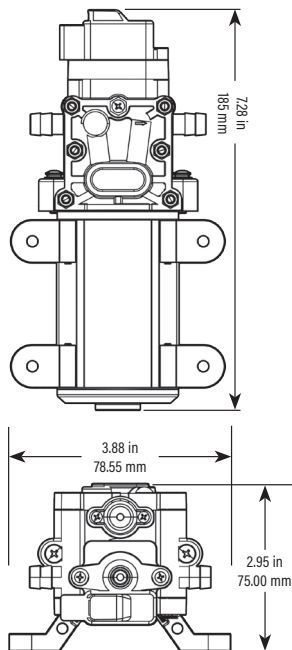
Other configurations available, please consult factory



2400 SERIES PUMP PERFORMANCE

PSI	GPM	LPM	AMPS
OPEN	1.60	6.06	2.00
10	1.40	5.31	2.50
20	1.35	5.12	3.00
30	1.15	4.36	3.25
40	1.00	3.79	3.50
50	0.95	3.60	3.75
60	0.85	3.22	3.75
70	0.75	2.84	4.00
80	0.60	2.27	4.25
90	0.45	1.71	4.50
100	0.40	1.52	4.75

Actual performance may vary based on pump configuration.



PUMP INFORMATION



Type

2 chamber diaphragm pump, self priming, capable of being run dry

Mode

Demand / Bypass

Liquid Temperature

140°F (60°C)

Priming Capabilities

up to 6 ft

Max Pressure

100 PSI (6.9 bar)

Inlet/Outlet Ports

3/8" hose barb

Weight

2.5 lbs (1.14 kg)

MOTOR INFORMATION



Leads

18 AWG, 4.5" long with 2-Pin connector

Duty Cycle

Intermittent

-  Positive displacement pump
-  Available demand and bypass
-  Can run dry
-  Quiet operation
-  Industry standard mount pattern

Standard Warranty

REMCO warrants its products to be free from defects in material and workmanship on all products sold by REMCO for resale or for use in purchasers' own business or original equipment manufacturer. Under normal use, maintenance and service (rental use excluded) the following terms apply:

For all REMCO pumps, the warranty will last for a period of one year from date of manufacture, or (1) year use with proof of purchase, not to exceed (2) years in any event. REMCO's obligation under this warranty shall be limited to replacing or repairing at REMCO's discretion, any such product or part which must be returned to REMCO's factory with a Return Material Authorization Number (RMA), transportation charges approved by REMCO or prepaid, and which upon examination, is found to REMCO's satisfaction to have been defective under the terms of this warranty. No credit will be allowed against future purchases for items returned as defective under the terms of REMCO's warranty. REMCO warrants all pump series to be free from material and workmanship defects (under normal use and service) for a period of one (1) year from the date of manufacture, or (1) one year use with proof of purchase, not to exceed (2) two years in any event. This warranty does not extend to any products, which have been altered or modified outside the REMCO factory, to any products that have not been properly maintained, nor does it apply to units that are returned in an unassembled condition. Furthermore, the warranty does not extend to pumps that are non-compliant with REMCO's Engineering Standards. This includes, but is not limited to, pumps ordered without an integral pressure control mechanism. The warranty guarantees that products will perform to

REMCO's flow and pressure specifications throughout the life of the warranty. The warranty does not cover wear, appearance, misuse, abuse, misapplication or external water damage. If the returned product is found not to be defective under the conditions of this warranty, a charge will be made for repair or replacement.

Brush wear may be limited to 1000 hours or less.

This is a Limited Warranty. It covers the product only and the extent of the coverage is limited to the cost of the product. As the manufacturer has no control over shipping, handling and installation, the warranty cannot cover water damage, or any other damage, caused by a leak or other malfunction.

THIS WARRANTY IS IN LIEU OF ALL WARRANTIES, EXPRESSED OR IMPLIED, INCLUDING IMPLIED WARRANTIES OR WARRANTIES OF MERCHANTABILITY AND/OR FITNESS FOR A PARTICULAR PURPOSE. NO PERSON IS AUTHORIZED TO GIVE ANY OTHER WARRANTY OR ASSUME OBLIGATION OR LIABILITY ON REMCO'S BEHALF. REMCO SHALL NOT BE LIABLE FOR ANY INDIRECT, INCIDENTAL, PUNITIVE OR CONSEQUENTIAL DAMAGES OF ANY KIND INCURRED BY THE REASON OF THE USE OR SALE OF ANY DEFECTIVE PRODUCT AND PART. THIS WARRANTY SHALL BE GOVERNED BY THE LAWS OF THE STATE OF MINNESOTA, WITH ANY DISPUTE OR CLAIM VENUED OR HEARD IN THE STATE OF MINNESOTA.



4605 County Road 82 SE
Alexandria, MN 56308
Phone: 763-253-4740
Toll Free: 1-800-228-2481
Fax: 763-253-4741

www.remcoindustries.com

© Copyright Remco Industries 2016. All rights reserved.



www.youtube.com/remcoindustries



www.facebook.com/remcoindustries



A I_2016_r1e1