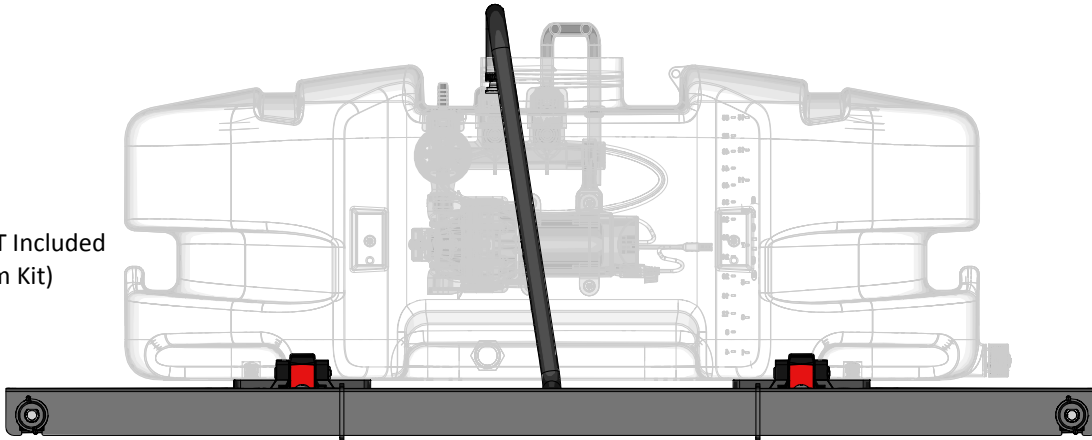


OWNER'S MANUAL

Model: TS-2N-ATV-BK (1231382)

(2-Nozzle Quick Release Boom Kit)

(Tank NOT Included
with Boom Kit)



**BEFORE RETURNING THIS PRODUCT
FOR ANY REASON, PLEASE CALL**

1-800-831-0027

**IF YOU SHOULD HAVE A QUESTION OR
EXPERIENCE A PROBLEM WITH YOUR
FIMCO INDUSTRIES PRODUCT:**

1-800-831-0027

**BEFORE YOU CALL, PLEASE HAVE THE
FOLLOWING INFORMATION AVAILABLE:
SALES RECEIPT & MODEL NUMBER. IN MOST
CASES, A FIMCO INDUSTRIES EMPLOYEE CAN
RESOLVE THE PROBLEM OVER THE PHONE.**

General Information

Thank you for purchasing this product. The purpose of this manual is to assist you in operating and maintaining your boom kit. Please read it carefully, as it furnishes information which will help you achieve years of trouble-free operation.

Warranty

Retain a copy of your receipt for your unit,
as it will be required to validate any warranty service
Products are warranted against manufacturer or workmanship
defects for one year from date of purchase for home owner
usage and 90 days for commercial usage.

For technical assistance, call: **TOLL FREE @ 1-800-831-0027**

Our Technical Support Representatives will be happy to help you.

To obtain prompt, efficient service, always remember to give the following information...

- Correct Part Description and/or part number
- Model #/Serial # of your sprayer

Part descriptions and numbers can be obtained from the illustrated parts list section(s) of this manual.

**Designed to work with:
25 Gallon Deluxe Spot Sprayer
TS-25-DLX-SP (1231381)**

Technical Specifications

- 2-Nozzle Boom Assembly (80" Spray Coverage)
- Corrosion-Resistant Nylon Nozzles
- Nozzle design incorporates a pre-orifice to produce larger droplets for less drift
- Large round orifice reduces clogging
- Excellent distribution for uniform coverage along the boom

Assembly Instructions

- Make sure the contents of the sprayer's carton match the items shown on page 2 of the manual. Refer to the parts list and exploded view drawing to help identify all the components
- Follow the steps on pages 2 & 3 to properly assemble the sprayer.



www.fimcoindustries.com

1000 FIMCO Lane, P.O. Box 1700, North Sioux City, SD 57049

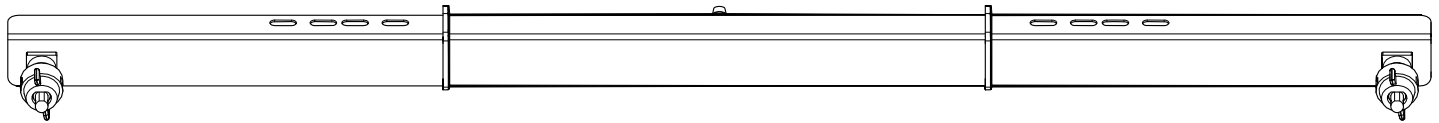
Toll Free Phone: 800-831-0027 : Toll Free Fax: 800-494-0440

[5194485

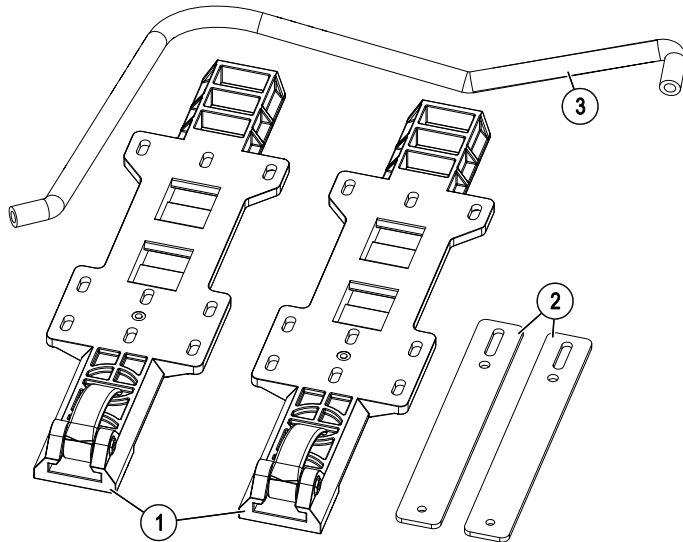
(02/17)]

Contents of your sprayer's carton (TS-2N-ATV-BK):

2-Nozzle Boom QJ (#5278237)

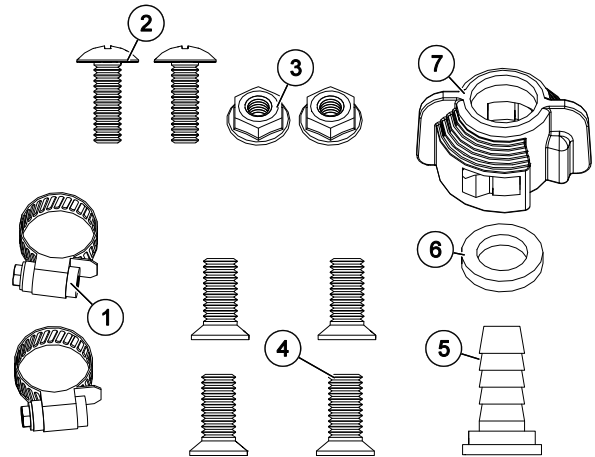


Contents of Bracket Kit #5278140



Ref. #	Part #	Description	Qty
1	5278222	ATV Quick Release Bracket Assembly	2
1.1	5078223	Cam Handle Assembly	1
2	5038874	Boom Mount Bracket - Fixed Height	2
3	5020538	Hose, 3/8"-1 Brd. x 43"	1

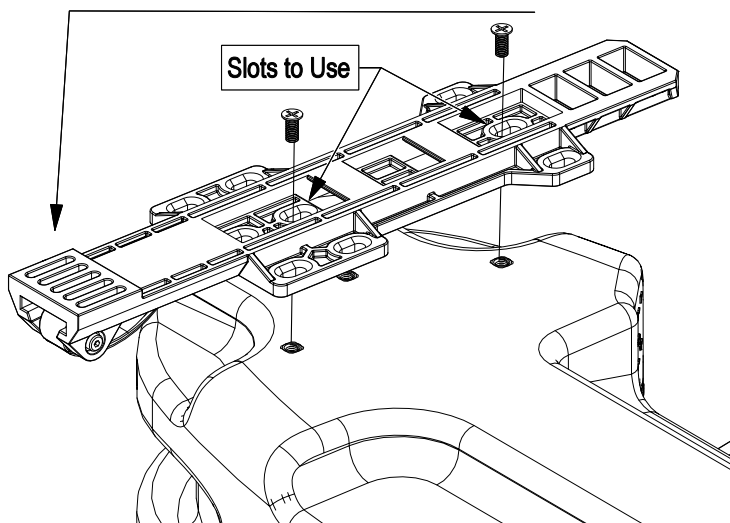
Contents of Parts Bag #5281114



Ref. #	Part #	Description	Qty
1	5051144	Hose Clamp, 3/8"	2
2	5117287	1/4"-20 x 3/4" Phillips Head Screw	2
3	5006306	1/4-20nc Hex Flanged Whiz Nut Gr. 5	2
4	5034149	5/16-18nc x 3/4" Flat Head Screw	4
5	5143431	QC Manifold - 3/8" Hose Straight Barb	1
6	5143430	Flat Washer - Hose Barb Seal	1
7	5143429	Quick Connect Quarter Turn Cap	1

Step 1

(**) Cam Handle on bracket should be facing towards the 'back' side of the tank.



Assembly Procedure (TS-2N-ATV-BK)

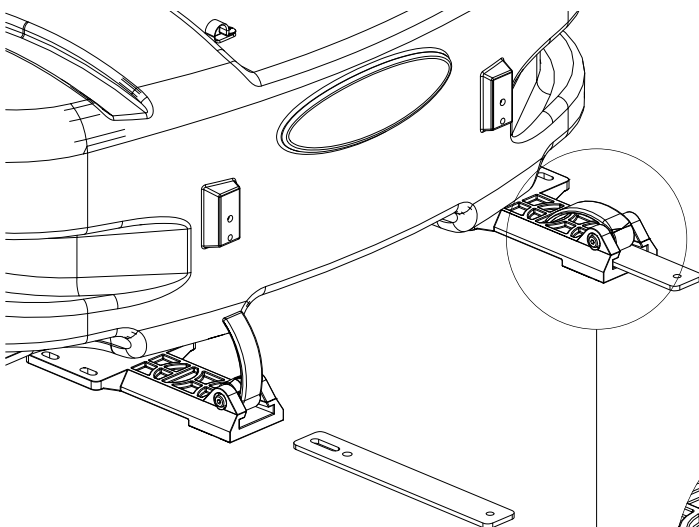
Normally, the sprayer will be mounted on an ATV with the pump assembly at the operator's back and the spray wand will be at the rear of the unit. Right Hand (RH) and Left Hand (LH) sides of the sprayer are determined as if you are standing behind the sprayer, looking at it (facing forward).

Start the assembly procedure by turning the tank upside down on a stable, flat surface.

A phillips head screwdriver is required for this step.

(**) Mount tank brackets to the underside of the tank as shown in Step 1. Use (4) flat head screws to secure it to the tank. The tank will rest on the surface of the brackets. Make sure the brackets are parallel with each other before tightening down the bolts. Do not over-tighten.

Step 2

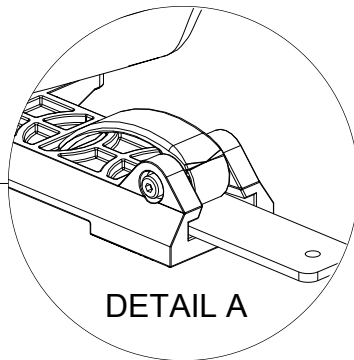


Assembly Procedure (TS-2N-ATV-BK)

After your tank brackets are securely attached, turn the tank assembly over and position it so that the cam handles which extend beyond the back of the tank are facing you and just hanging over the edge of the table or flat surface you are assembling this on.

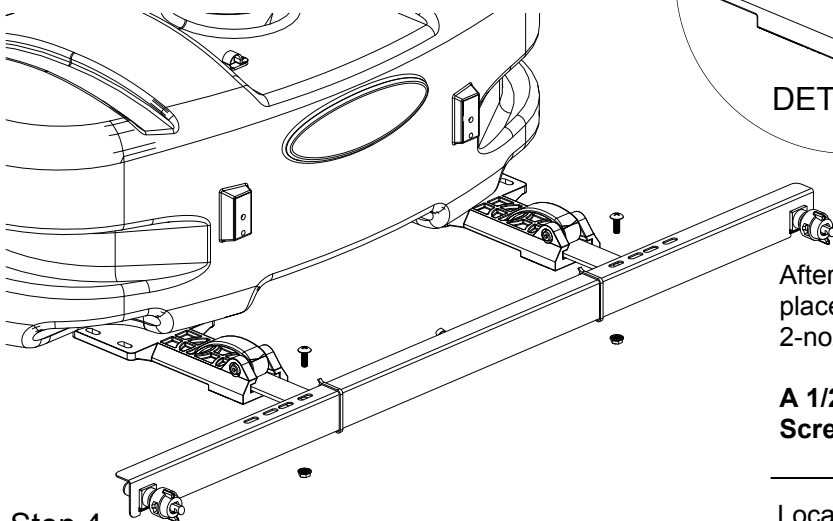
Secure the boom mounting brackets to the tank mounting brackets with Cam handles as shown in Detail A. You can position them as needed within the slot on the bracket. Just be sure that the surfaces of both brackets are even with each other.

You are now ready to mount this unit to an ATV, using ratchet straps (NOT INCLUDED)



DETAIL A

Step 3

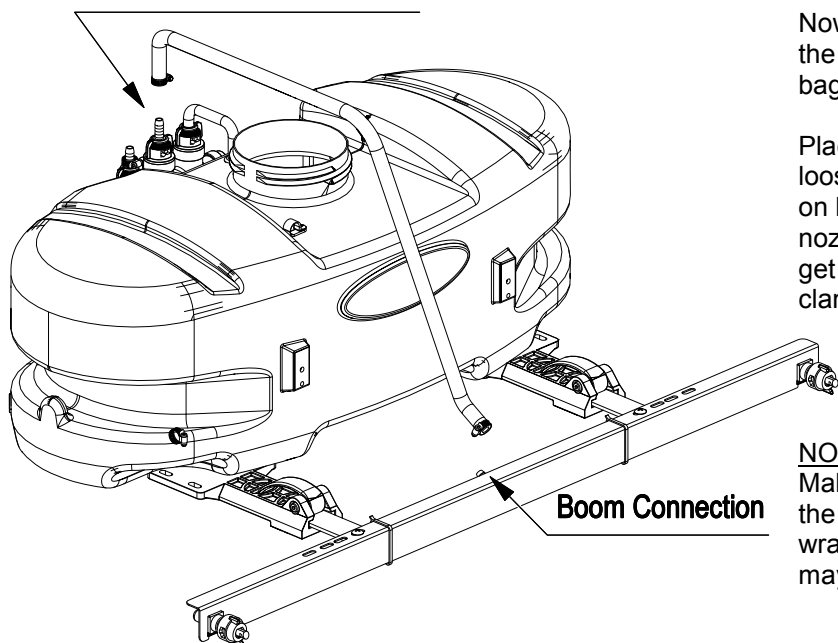


After your boom mounting brackets are secured in place and the unit secured on your ATV, attach the 2-nozzle boom in place with (2) screws and whiz nuts.

A 1/2" socket or wrench and Phillips Head Screwdriver are required for this step.

Step 4

Manifold Connection



Locate the 3/8" HB, Flat Washer and Quarter Turn Cap in the parts bag and attach to your boom outlet on your Quick Connect Manifold.

Now you are ready to attach the feeder hose, locate the 43" hose and the (2) hose clamps from the parts bag.

Place the hose clamps over each end of the hose loosely. Slip the ends of the hose over the hose barbs on both the manifold and the poly tee fitting on the nozzle harness. Use a twisting motion, if necessary, to get the hose fully onto each barb. Bring the hose clamps to the connection point and tighten securely.

NOTE:

Make sure this boom feeder hose does not end up on the 'outside' of your spray wand hose, otherwise unwrapping the spray wand hose from around the tank may be difficult.

Testing the Sprayer

NOTE: It is VERY important for to test your sprayer with plain water before actual spraying is attempted. This will enable you to check for leaks without the possibility of losing any expensive chemicals.

Fill the tank about 1/2 full with plain water and drive to the starting place for spraying. When you are ready to spray, turn the boom valve to the "on" position. This will start solution spraying from the tips of the boom. The pressure will decrease slightly when the boom is spraying. Adjust the pressure by turning the "ON/OFF" valve lever on the bypass line valve. Make sure your pattern is sufficient. You may down-pressure the system by 'bypassing' solution back into the tank. This is achieved by opening the bypass valve. Regulating pressure is done in this manner.

Read the operating instructions and initially begin spraying by closing the 'bypass' valve and opening the boom line valve. This will enable the air in the line to be eliminated (purged) through all the tips, while building pressure. When everything tests all right (no leaks and good pressure), add the desired chemicals to the mixture and water combination and start your spraying operation. Adjust the pressure and spray as you did in the testing procedure.

Conditions of weather and terrain must be considered when setting the sprayer. Do not spray on windy days. Protective clothing must be worn in some cases

Be sure to read the chemical label(s) before application!

Calibration

Chemical labels may show application rates in gallons per acre, gallons per 1000 square feet or gallons per 100 square feet. You will note that the tip chart shows 2 of these rating systems.

Once you know how much you are going to spray, then determine (from the tip chart) the spraying pressure (PSI), and the spraying speed (MPH).

Determining the proper speed of the pulling vehicle can be done by marking off 100, 200 & 300 feet. The speed chart indicates the number of seconds it takes to travel the distances. Set the throttle and with a running start, travel the distances. Adjust the throttle until you travel the distances in the number of seconds indicated by the speed chart. Once you have reached the throttle setting needed, mark the throttle location so you can stop and go again, returning to the same speed.

Add water and proper amount of chemical to the tank and drive to the starting place for spraying.

Using the Boom Nozzles

Four things must be considered before spraying with the boom.

1. How much chemical must be mixed in the tank.
 2. Rate of spray (gallons per acre to be sprayed).
 3. What pressure (p.s.i.) will be used.
 4. Speed traveled (mph) while spraying.
- * Refer to the chemical label to determine your chemical mixture
 - * See the tip chart to determine the pressure to be used. The chart will also show the speed used when spraying.
 - * Start the pump and open the valve to the boom nozzles.
 - * Check the spray pattern. Usually you can see the coverage better on a solid concrete surface, such as a driveway.
 - * Raise or lower the nozzles so that you will have a good coverage pattern. Generally the proper height will be about 18 inches from the object(s) being sprayed.

Operation

Always fill the tank 1/2 full with water first and then add the chemical slowly, mixing as you pour the chemical into the tank and then fill the rest of the way. You may use the bypass in order to mix the chemical and water.

Adjusting Pressure

- When the bypass valve is closed, pressure is at the highest point.
- Opening the valve will decrease pressure.

Maintenance During/After Spraying

Proper care and maintenance will prolong the life of your sprayer. After use, fill the sprayer half way with clean water. Start the pump and allow the water to pump through the entire plumbing system and nozzles. Drain and then refill half full, add the recommended amount of a good quality tank cleaner, such as FIMCO Tank Neutralizer and Cleaner. (If no tank cleaner is available, you may substitute dish soap for this step). Turn pump on and circulate through system for 15 minutes and then spray out through boom and handgun nozzles. Refill sprayer half way with clean water and repeat. Follow the chemical manufacturer's disposal instructions of all wash or rinsing water. If boom or handgun nozzles need cleaning, remove them from the sprayer and soak in warm soapy water. Clean with a soft bristled brush or toothpick if necessary. Never use a metal object. Even the slightest damage can change the flow rate and spray distribution. Water rinse and dry the tips before storing.

Storing Sprayer

When sprayer is not in use, release Cam Lock Handles. This is to prevent deforming of Cam Lock Mechanism. Do not use QR bracket Cams to hold and store boom in vertical position.

Winter Storage

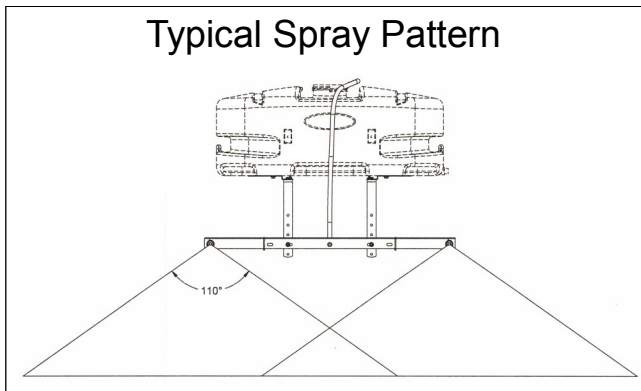
Before storing your sprayer for winter or long term storage, thoroughly clean and drain it as much as possible. Then pour enough pink RV antifreeze into the tank so that when the pump is turned on you can pump the antifreeze throughout the entire plumbing system, including the bypass. Make sure to operate the boom and handgun until you see pink fluid spraying from the nozzles. Leave any remaining antifreeze in the tank. Before your next usage, rinse the antifreeze from the sprayer with clean water.

It is nearly impossible to drain all of the water from the sprayer and any trapped water can freeze in cold weather and damage parts of the sprayer. Pumping the antifreeze through the system will displace the water and help prevent this damage.

Speed Chart			
	Time Required in seconds to travel a distance of		
Speed in M.P.H. (Miles Per Hour)	100 Ft.	200 Ft.	300 Ft.
1.0	68 sec.	136 sec.	205 sec.
2.0	34	68	102
3.0	23	45	68
4.0	17	34	51
5.0	14	27	41
6.0	11	23	34
7.0	9.7	19	29
8.0	8.5	17	26
9.0	7.6	15	23
10.0	6.8	14	20

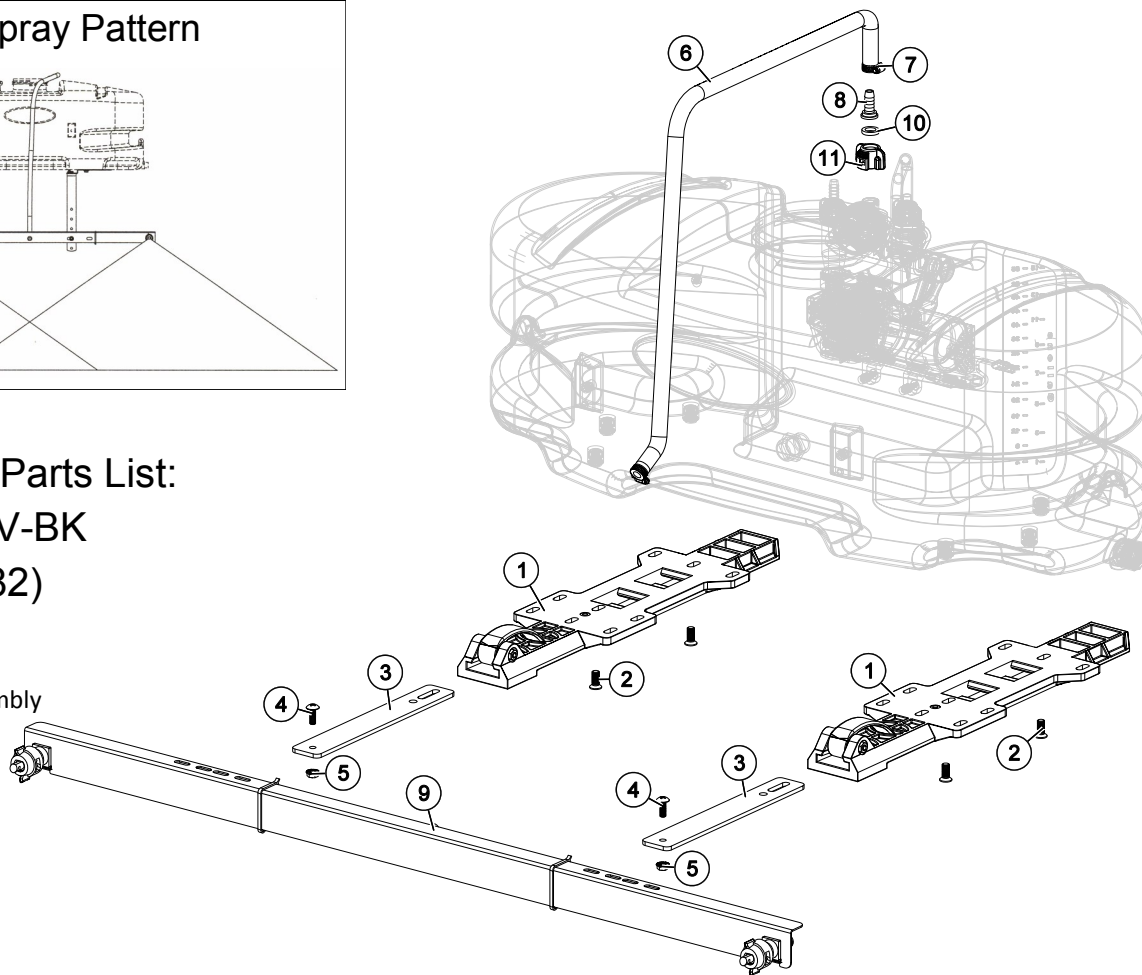
Tip Chart - 40" Spacing							
Tip Color	Tip No. (Color)	Pressure (psi)	Capacity (GPM)	Gallons Per Acre - Base on Water			
				5 MPH	6 MPH	7 MPH	8 MPH
RED	TF-VS2 (50 Mesh)	10	.20	5.9	5.0	4.2	3.7
		20	.28	8.4	7	6.0	5.3
		30	.35	10.5	8.6	7.3	6.4
		40	.40	11.9	9.9	8.5	7.4
Tip Color	Tip No. (Color)	Pressure (psi)	Capacity (GPM)	Gallons Per Acre - Base on Water			
				5 MPH	6 MPH	7 MPH	8 MPH
GRAY	TF-VS3 (50Mesh)	10	.30	8.9	7.4	6.4	5.6
		20	.42	12.6	10.5	9.0	7.9
		30	.52	15.4	12.9	11.0	9.7
		40	.60	17.8	14.9	12.7	11.1

Typical Spray Pattern



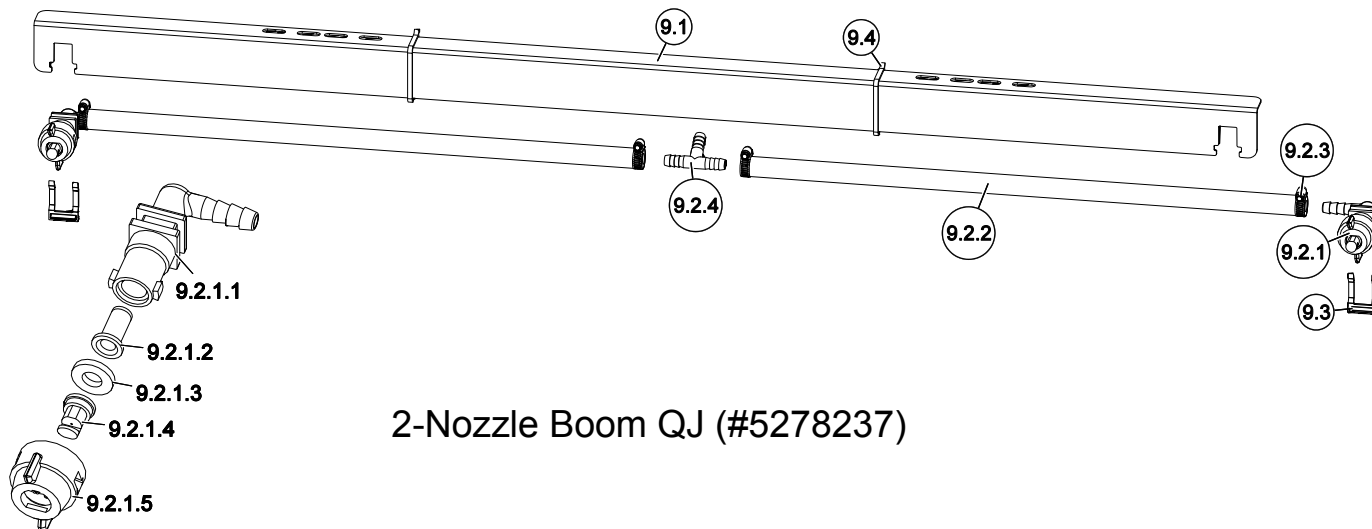
Exploded View/Parts List: TS-2N-ATV-BK (1231382)

See Boom Assembly
below



Ref. #	Part #	Description	Qty
1	5278222	ATV Quick Release Bracket Assembly	2
1.1	5078223	Cam Handle Assembly	1
2	5034149	5/16-18nc x 3/4" Flat Head Screw w/Locking Patch	4
3	5038874	Quick Release Boom Mount Bracket - Fixed Height	2
4	5117287	1/4"-20 x 3/4" Phillips Truss Head Machine Screw	2
5	5006306	1/4-20nc Hex Flanged Whiz Nut Gr. 5	2
6	5020538	Hose, 3/8"-1 Brd. x 43"	1
7	5051144	Hose Clamp, 3/8"	2
8	5143431	QC Manifold - 3/8" Hose Straight Barb	1
9	5278237	Rigid 2-Nozzle ATV Boom Assembly	1
9.1	5095377	Boom Mount Angle -2 Nozzle (Quick Release)	1
9.2	5277692	2-Nozzle Harness (3/8")	1
9.2.1	5277688	ELL Nozzle Sub-Assembly (3/8")	2

Ref. #	Part #	Description	Qty
9.2.1.1	5056113	Single Hose Shank (3/8" Hose)	1
9.2.1.2	5116019	Nozzle Strainer, Red (50 Mesh)	1
9.2.1.3	5016157	Seat Washer (QJ Caps)	1
9.2.1.4	5018274	Turbo FloodJet Tip (TF-VP3)	1
9.2.1.5	5046251	QJ Cap Only (Black)	1
9.2.2	5020531	Hose, 3/8"-1 Brd. x 19-3/8" NBR & PVC	2
9.2.3	5051144	Hose Clamp, 3/8"	4
9.2.4	5086025	Poly Hose Tee, 3/8" HB	1
9.3	5053110	Plastic Retaining Clip	2
9.4	5133094	Nylon Cable Tie	2
10	5143430	Flat Washer - Hose Barb Seal	1
11	5143429	Quick Connect Quarter Turn Cap	1



2-Nozzle Boom QJ (#5278237)

Notes: