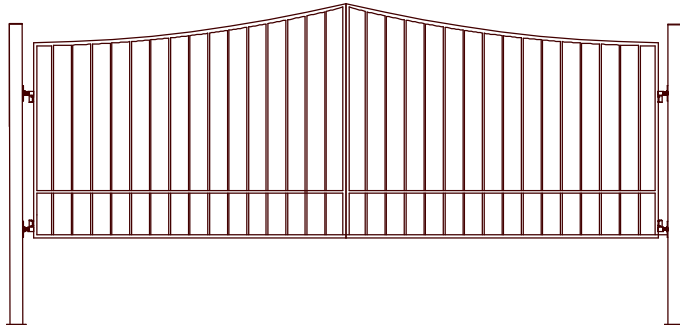
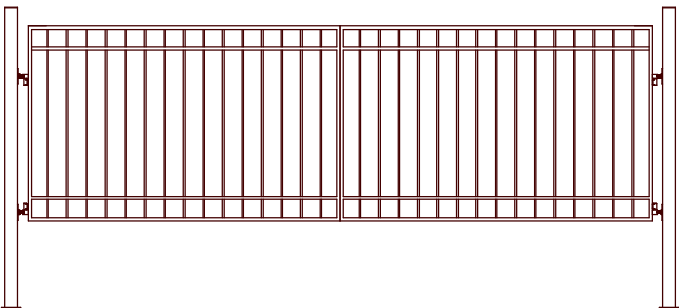
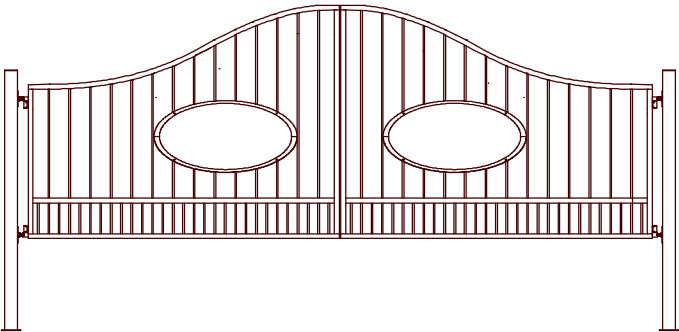


Decorative Driveway Gate Installation Manual

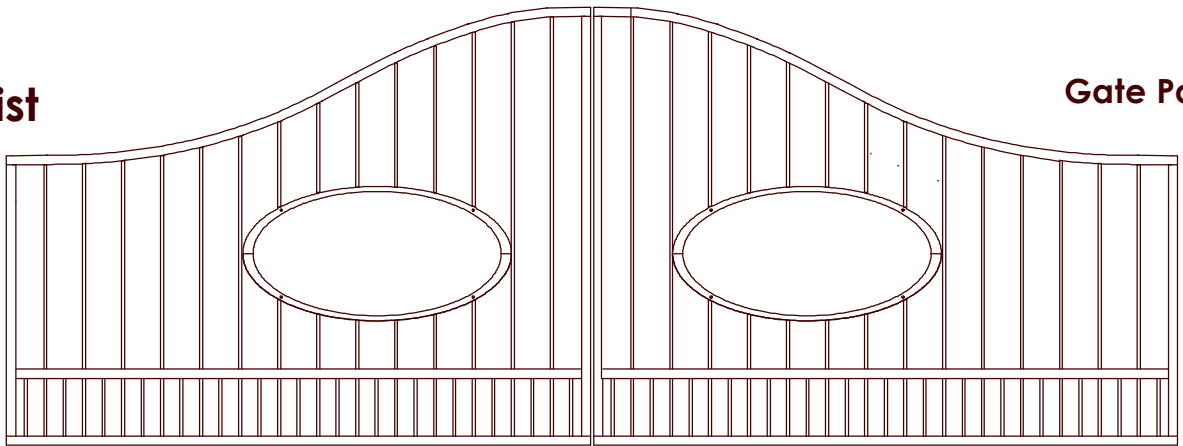


IMPORTANT: Before digging holes for your installation, be sure to contact the appropriate utility companies and request that they mark the locations of all electric, cable TV, pipes, gas lines, etc. This will insure your safety and prevent you from damaging any of these utility lines.

CALL 811 BEFORE YOU DIG.

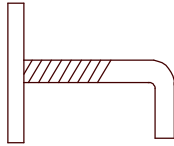
Parts List

Gate Panel(s)



Adjustable Gate Hanger

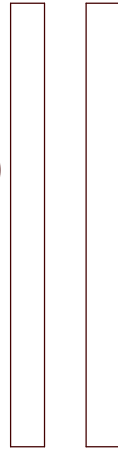
Single Gate (2)
Dual Gates (4)



Touch Up Paint Pen (1)



Gate Posts (2)



5/8" BALL (2x for single) (4x for dual)



1-1/2" Bolts

Single Gate (8)
Dual Gates (16)



Washers

Single Gate (8)
Dual Gate (16)

REBAR (2)



Tools Needed

Level
Mallet
Tape Measure (25')
Shovel
Line Level
Square

Concrete Mixer (recommended)
Water Bucket
Quick Set Concrete (400 lb. per post)
Wrenches
Wheelbarrow

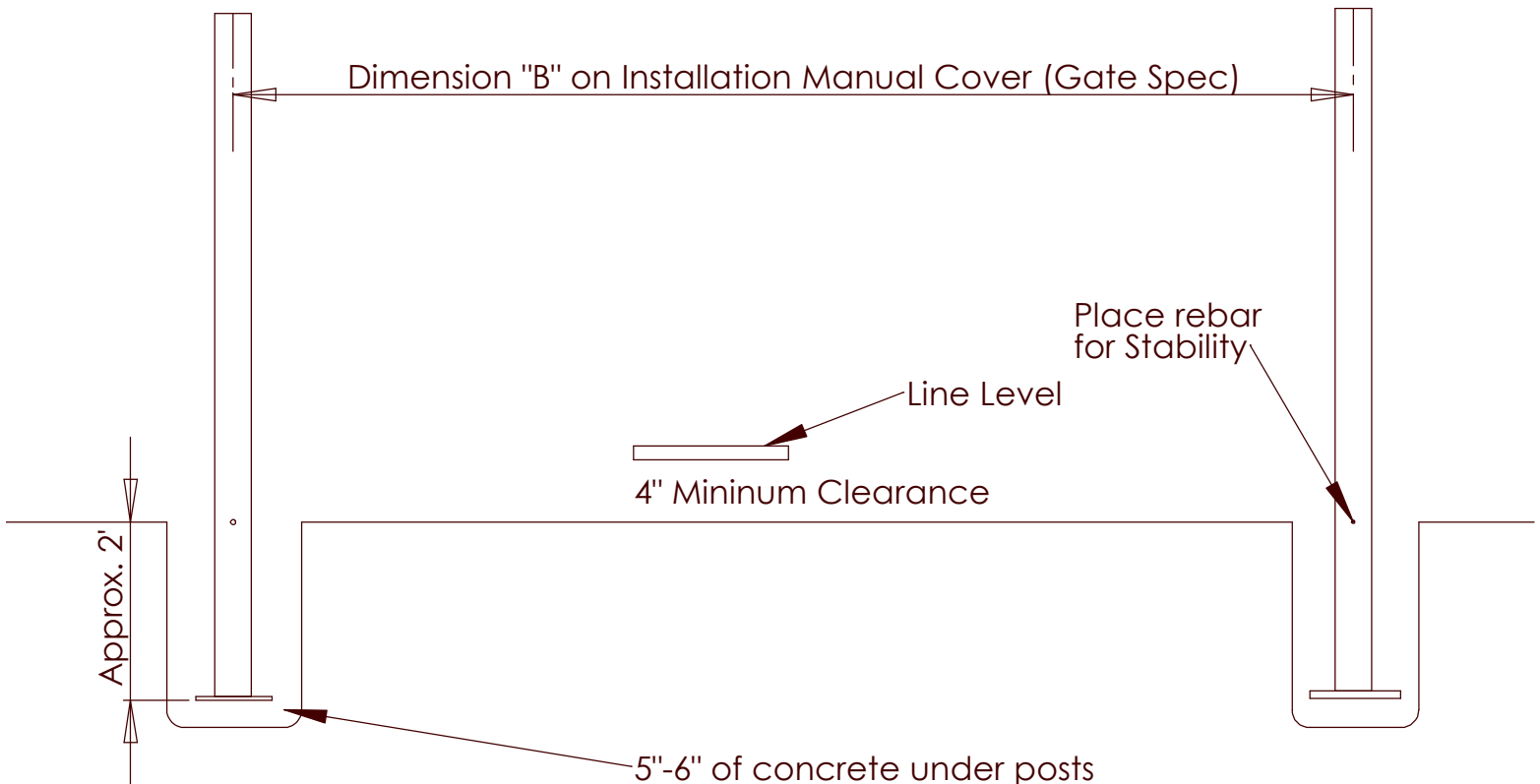
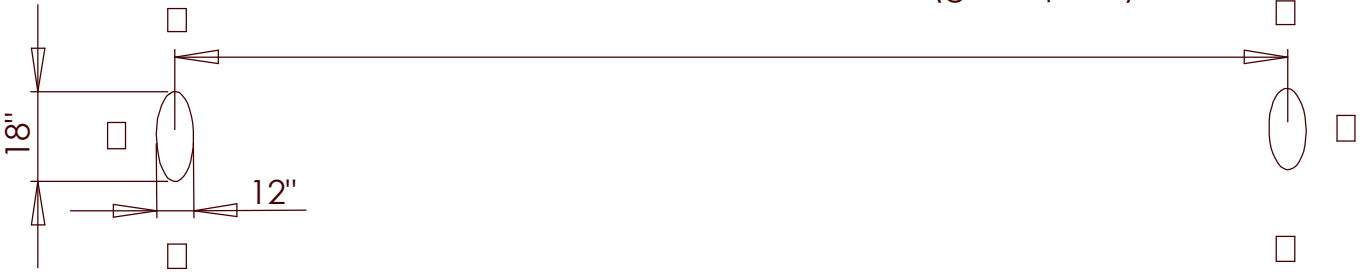
Stakes (6)
Post Hole Digger
Spray Paint for marking
String Line
Grease Gun
Extra Person for Help

Determining Position for Gate Post Installation

Be sure to allow 4" clearance from the bottom of the gate to the highest point on driveway or curb.

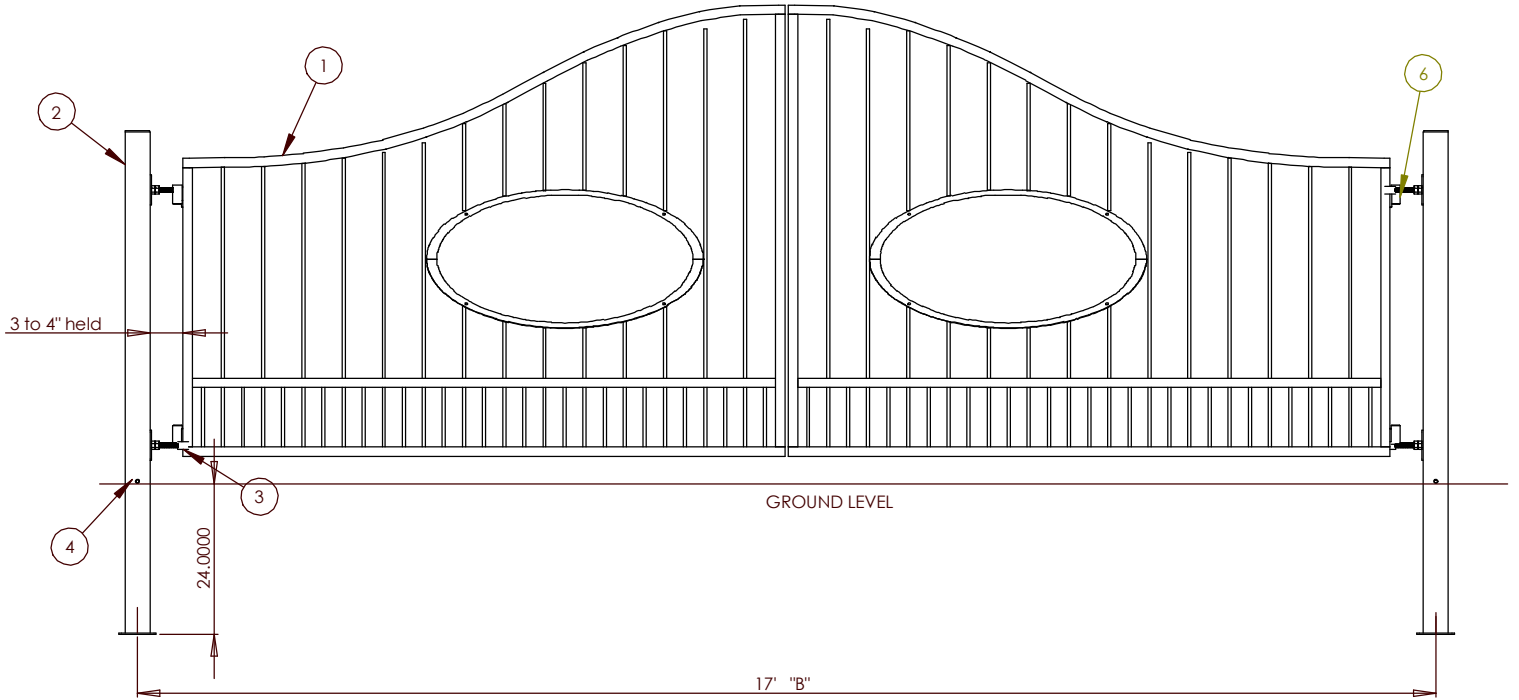
Setting Stakes and Level Lines (Overhead View)

Set a level string line for center-to-center of posts measurements:
Dimension "B" on Installation Manual Cover (gate specs)



If ground is not level shim rebar with wooden wedges and blocks supplied to level across drive.

ITEM NO.	PART NUMBER	DESCRIPTION	QTY.
1	GB-DBC016	DUAL BELL CURVE OVAL 16'	2
2	GB-PST4X4	POST 4x4	2
3	GB-AGH	ADJUSTABLE GATE HANGER	4
4	GB-REBAR	1/2" ROUND BAR	2
5	GB-5-8BALL	BALL BEARING	4

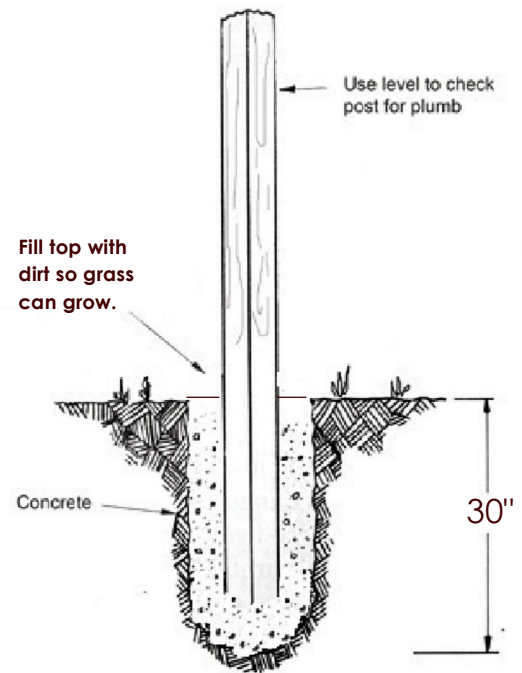


Setting the Posts

1. Dig the holes approximately 12" wide, 18" long (the elongated side should run parallel to the driveway). Do not perfectly round to help prevent posts from twisting over time. Depth of the hole will depend on whether the ground is level or sloped. If the ground flat, holes should be approximately 30" deep.
2. Mix the concrete according to the instructions on the concrete bag. A stiff mix is necessary for post to stand by itself while concrete sets. If mix is too liquid, posts will need to be held in place until the concrete sets.
3. Start with a base of concrete approximately 5-6 inches deep before putting the post in the hole.
4. Next, place the post in the hole that is on the highest side of the driveway (if sloped). The level indicator on the post must be aligned with the string line (at least 4 inches above ground). Before concrete is added tie posts off with stakes and string to keep plumb in vertical.
5. Fill the remainder of the hole by alternating the concrete around the four sides of the post so it stays centered. Double check measurements to ensure no movement. Double check all measurements before concrete is added.
6. Leave a gap (approximately 5") between the ground level and concrete. After the concrete dries you can fill the rest in with dirt so that grass can grow over the concrete.
7. Repeat Steps 3-6 for the second post.

Important:

- (A) Check to be sure that the posts are plumb by checking each side with a standard level.
- (B) Use a measuring tape to insure that the space between the insides of posts is equal to "Dimension B" on the Cover Sheet of the installation manual.
- (C) Insure that the level indicators for each post align with the string line.
- (D) Make adjustments as necessary.



Attaching the Hinge Plates and Hanging the Gate

Your post will arrive with hinge plate and hanger attached to posts.

Important: Allow concrete to set for 24 hours before starting next step!

1. Secure the hinge plates to the gate post with the bolts, washers, and nuts. Tighten nuts by hand.
2. Secure bottom hinge bolts to the gate with the washers and nuts included. Tighten nuts by hand.
TIP: A slightly loose hinge bolt provides ease and flexibility when dropping the hinge bolt into the hinge barrel. Do the top hinge bolts as you set the gate in place.
3. Make sure ball bearings are inserted into all hinge barrels.
4. Lower the gate hinge bolts into the hinge barrels. Make sure the hinge bolts fit all the way into the hinge barrels.
5. Adjust gate level by tightening and the hinge bolt nuts.
6. Check to be sure your gate is level before tightening all nuts with a wrench. If installing a dual gate, be sure that both gate panels are level with one another.
7. Tighten ALL nuts with a wrench.

Maintenance and Troubleshooting

- **If your gate is not level:** Adjust the hinge bolts to lift or lower the top or bottom of the gate panel.
- **If minor rust develops:** Use black touch up paint.
- **If your gate is squeaking:** Lubricate hinge. For maintenance lubricate grease fittings once per year.

IMPORTANT: Lubricate gate hinges once a year for smooth operation. Using a grease gun, place nozzle over the gate hinge grease fitting and squeeze the gun handle to insert the grease into the hinge barrel.