



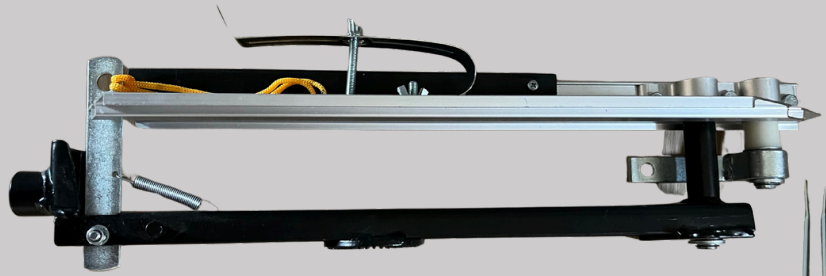
CLAYHAWK FULL COCK TRAP

MODEL: CH300

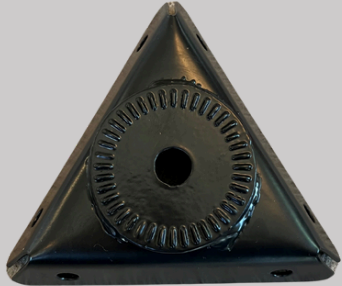
INCLUDED PARTS



Handle



Trap Head



Triangle Pivot Mount



Pivot Mount



Main Spring and Spade Bolt



Safety Ring



Safety Ring Arms



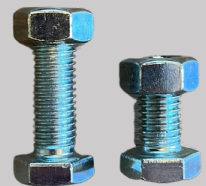
Upright Frames



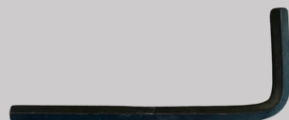
Base Frames



Bolts and Nuts for Frame assembly



Bolts and Nuts for Pivot Mount



Allen Wrench



Safety Ring Clips



Allen Bolts for Safety Ring Arms



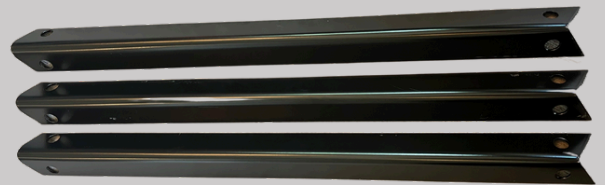
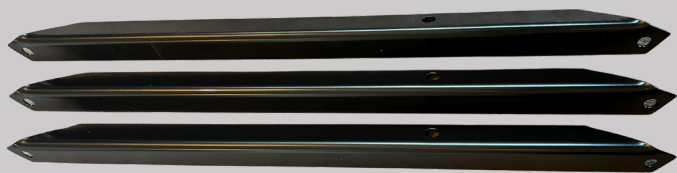
Wrench



Ground Stakes



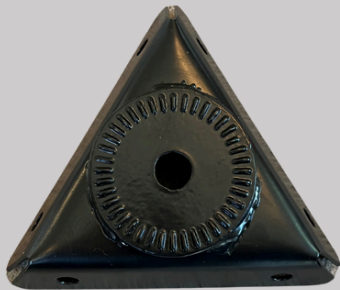
STEP 1



Take the Ground/Base Frame with holes and lay out in a triangular shape. Take one of the Side/Corner Upright Frames and overlap one corner of the Ground/Base triangle. Push the hex bolts (one of the 12 included) through the ground base and into the side corner upright from the inside out. Secure with one of the 12 provided hex nuts.



STEP 2

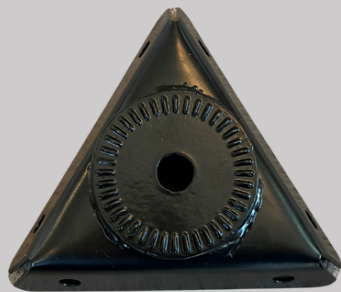


Once you have assembled the bottom and sides of the base assembly, cap with the Triangular Pivot Mount.

Now that the top is in place, secure with provided hex bolts and hex nuts from the inside out. Be sure to go back and tighten down all hex nuts on frame assembly.



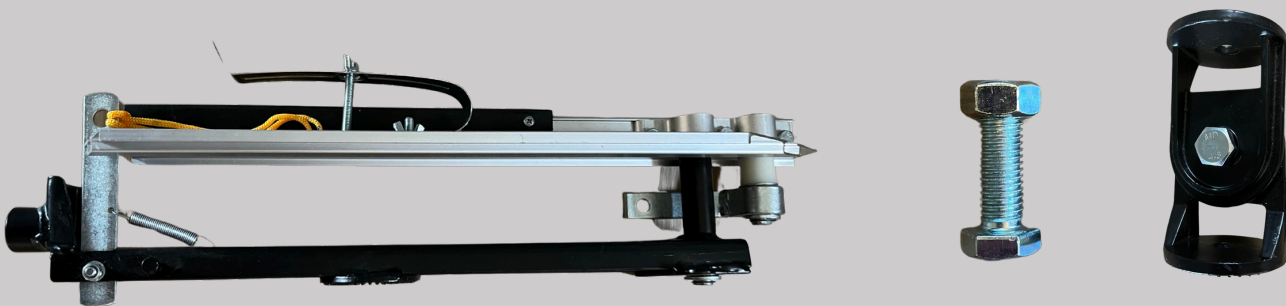
STEP 3



Take the 1 3/4" (shorter) Hex Bolt and Nut and push up through the center hole of the Triangular/Top Pivot casting securing with the 1/2" hex nut. This is where you will attach the 3 Pivot Mount.



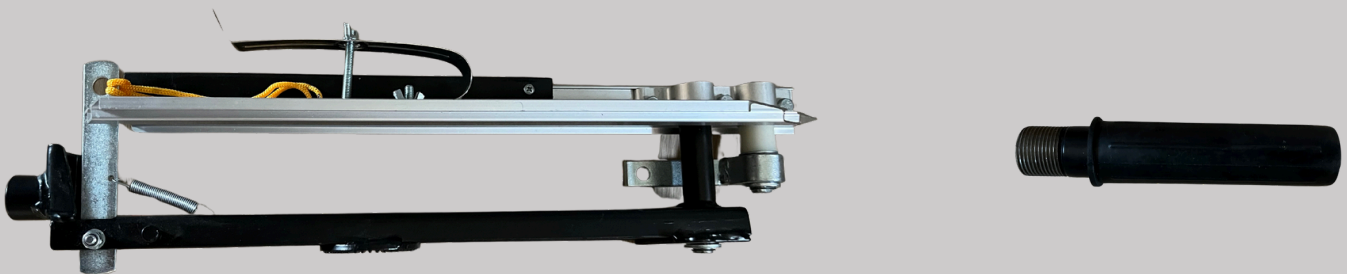
STEP 4



Insert longer bolt into hexagon shaped opening, in the trap head carriage through the top of the pivot mount assembly, interlocking the gear mesh teeth. Secure with 1/2" nut using wrench.



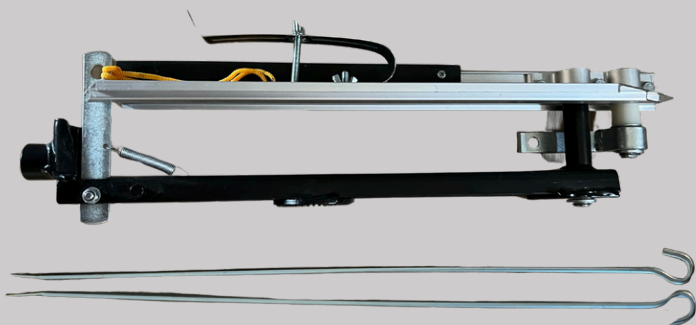
STEP 5



Attach Handle to Trap Head by threading into the through trap head into handle. Tighten securely.



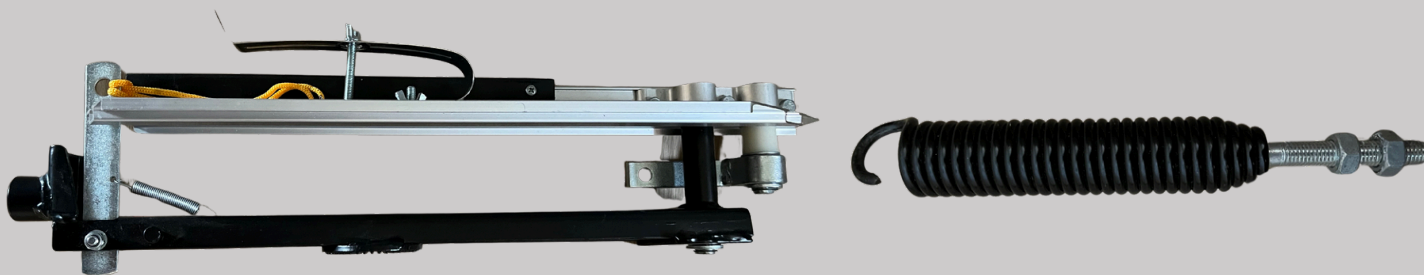
STEP 6



To attach safety ring, attach the ring brace arms using allen screws. Pinch arms of the safety ring clips and slide them over ends of safety ring. Push ends of ring guard over posts on trap head and slide safety ring clips down over safety ring and post to secure. Secure with brace arms so safety ring will show the path of the throwing arm



STEP 7



Rotate the arm counter clockwise into the 1 o'clock position. Hook the black main spring into the silver swiveling spring hook, which is attached underneath the throwing arm/clutch pivot point. At the narrow end of the black main spring, screw one of the provided 1/2" nuts onto the threaded 1/2" bolt about 1" deep. Pull the threaded 1/2" bolt through the hole at the back of the trap head carriage. Now screw on the other 1/2" nut with the provided wrench until the two nuts meet. **It is NOT necessary to tighten the spring all the way for optimum speed and distance



THANK YOU

Ensure all hardware is tightened.

Once the Main Spring is installed, the thrower is live. Please refer to operation and warnings on the next page.

OPERATION

1. Position trap in desired location suitable for shooting trap.
ALWAYS MAKE SURE YOU POINT THE TRAP IN A SAFE DIRECTION AWAY FROM BYSTANDERS, TREES, OR ANIMALS WITH AT LEAST A 400 METER OPEN FIELD/SHOT FALL ZONE.

2. Elevation can be adjusted by loosening the bolt in the middle of the Pivot Mount and then tightening once adjustment has been made. Direction can be adjusted by loosening the Large Nut below the Pivot mount. When desired elevation and direction is achieved, hand tighten both nuts.
NEVER ADJUST THE TRAP WHILE IT IS COCKED!

4. With the throwing arm in the 12 o'clock position, place a clay pigeon under the clay pigeon clamp and rotate clockwise until it reaches the 6 o'clock position and locks into the trigger. **BE SURE TO TEST THROW PRIOR TO CONTINUOUS USE TO ENSURE TRAP IS IN GOOD WORKING ORDER.**

5. With the shooter positioned to the left of the trap, pul the string on the handle to release the arm to throw the clay.

TROUBLESHOOTING

Clay pigeons only throwing a short distance -

Make sure the Trap is firmly secured and wont move or bounce.
Tighten the nut on the spring which will increase arm swing speed.

Clay pigeons breaking during use -

Clay pigeon clamp is too close to the trigger. Un-cock the machine and loosen the wing nut and slide the clamp forward on the arm. Re-tighten wing nut.

Warranty & Customer Service
Register your product online at
www.doalloutdoors.com. Receipt is required for
warranty registration.
ONE YEAR PARTS WARRANTY.

customerservice@doalloutdoors.com
1(866)SHOT-DOC
Monday - Friday 8:00 AM to 4:00 PM
DO-ALL OUTDOORS LLC - Nashville, Tennessee, USA
Find tech tips, instructions, troubleshooting videos,
and more online!



1-866-SHOT-DOC

(1-866-746-8362)

DOALLOUTDOORS.COM

CUSTOMERSERVICE@DOALLOUTDOORS.COM



facebook.com/doalloutdoors



tiktok.com/@doalloutdoors



youtube.com/doalloutdoors



instagram.com/doalloutdoors