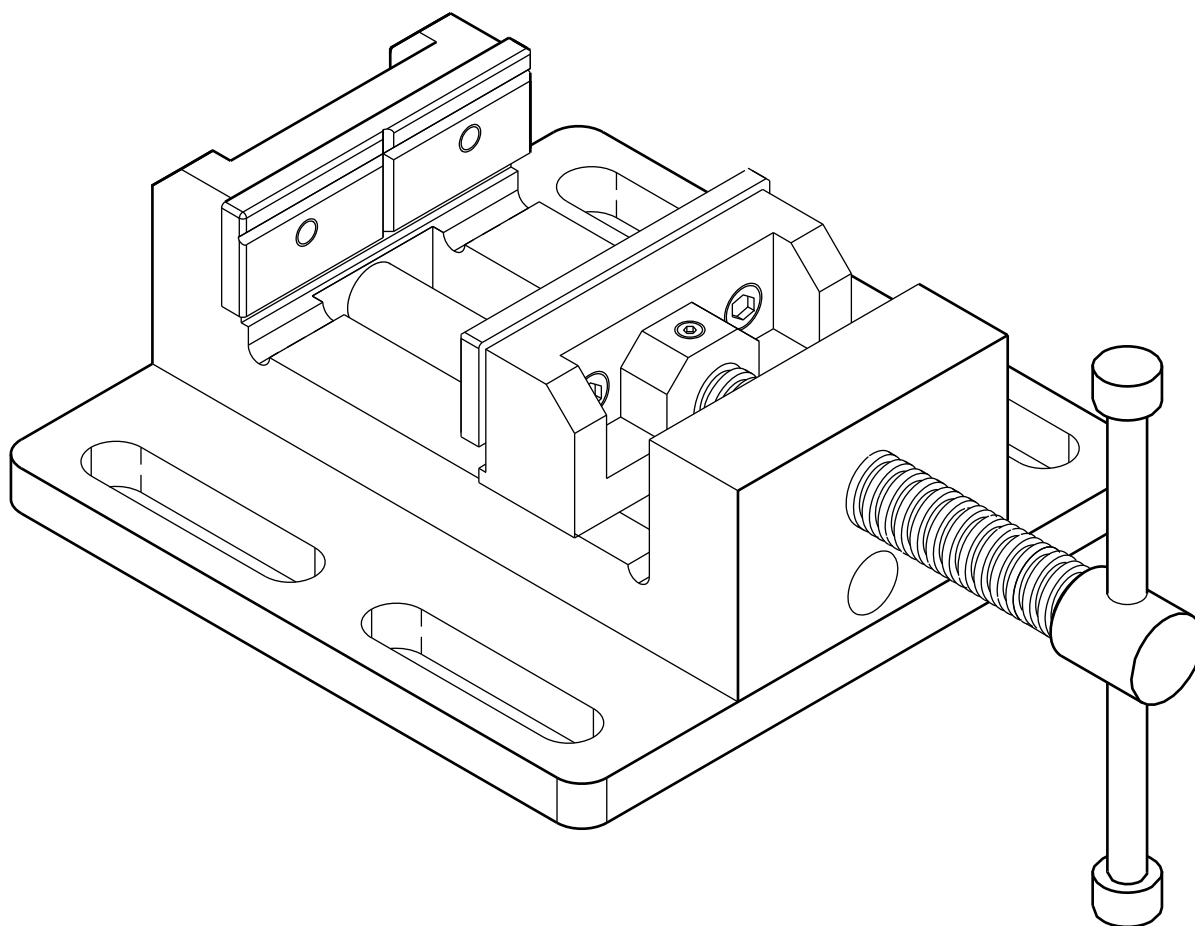


PALMGREN®

3", 4", 6" & 8"

LOW PROFILE DRILL PRESS VISE



Read carefully and follow all safety rules and operating instructions before first use of this product.

DESCRIPTION

Palmgren 3", 4", 6" and 8" Low-Profile Drill Press Vises are made of durable cast iron and steel. Vises are provided with four mounting slots for securing vise to work surface.

SAFETY RULES

- Understand and obey all safety instructions supplied with drill press, mill or other machines on which vise is used.
- Bolt or clamp vise to work surface in at least two mounting locations using mounting flanges provided on base.

- Be sure workpiece is clamped securely between jaws before starting machining operation.
- Do not over tighten—vise can develop a large clamping force. Use only force which is needed.
- Do not pound or hammer on workpiece. This vise is designed to clamp the workpiece in a desired position for machining operations only.

DIMENSIONS

Refer to Figure 1.

Stock No.		12303	12403	12601	12801
Jaw Width	A	3"	4"	6"	8"
Throat Depth	B	1 ⁵ / ₁₆ "	1 ³ / ₄ "	2"	2"
Jaw Opening	C	3"	4"	6"	8"
Overall Height	H	2 ⁷ / ₁₆ "	2 ⁷ / ₈ "	3 ⁹ / ₁₆ "	3 ⁹ / ₁₆ "
Base Length	L	6 ¹ / ₂ "	7 ³ / ₈ "	10 ¹⁵ / ₁₆ "	15 ⁷ / ₁₆ "
Base Width	W	5 ⁷ / ₁₆ "	6 ³ / ₈ "	9 ³ / ₈ "	11 ¹ / ₁₆ "

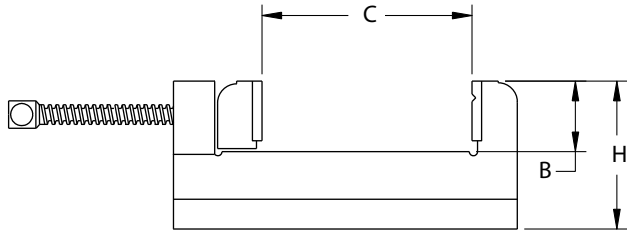
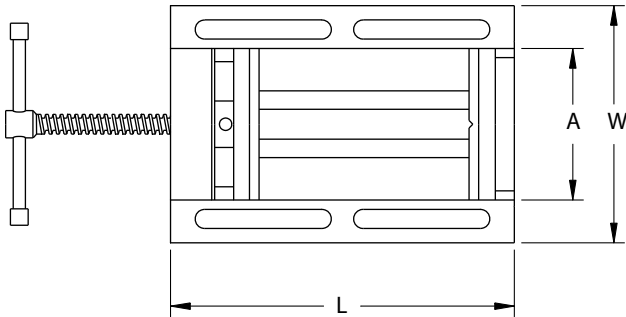


Figure 1 - Dimensions

OPERATION

Refer to Figure 2.

- Mount vise to work surface in desired location by securing at least two mounting flanges located on base (Ref. No. 1).
- Open jaws of vise and place workpiece between jaws in desired position. Secure workpiece between jaws by rotating leadscrew with handle (Ref. No. 3). Be sure workpiece is held securely in vise before starting machining operation.

MAINTENANCE

Particles of metal or wood can damage machined surfaces, causing difficult or inaccurate operation.

- The vise is shipped with a protective coating. This coating should be removed before operation. Use penetrating oil to remove protective coating.
- Keep machined surfaces and all moving parts clean and free of dirt, chips and foreign materials.
- Keep machined surfaces and lead screws lubricated with medium weight machine oil.

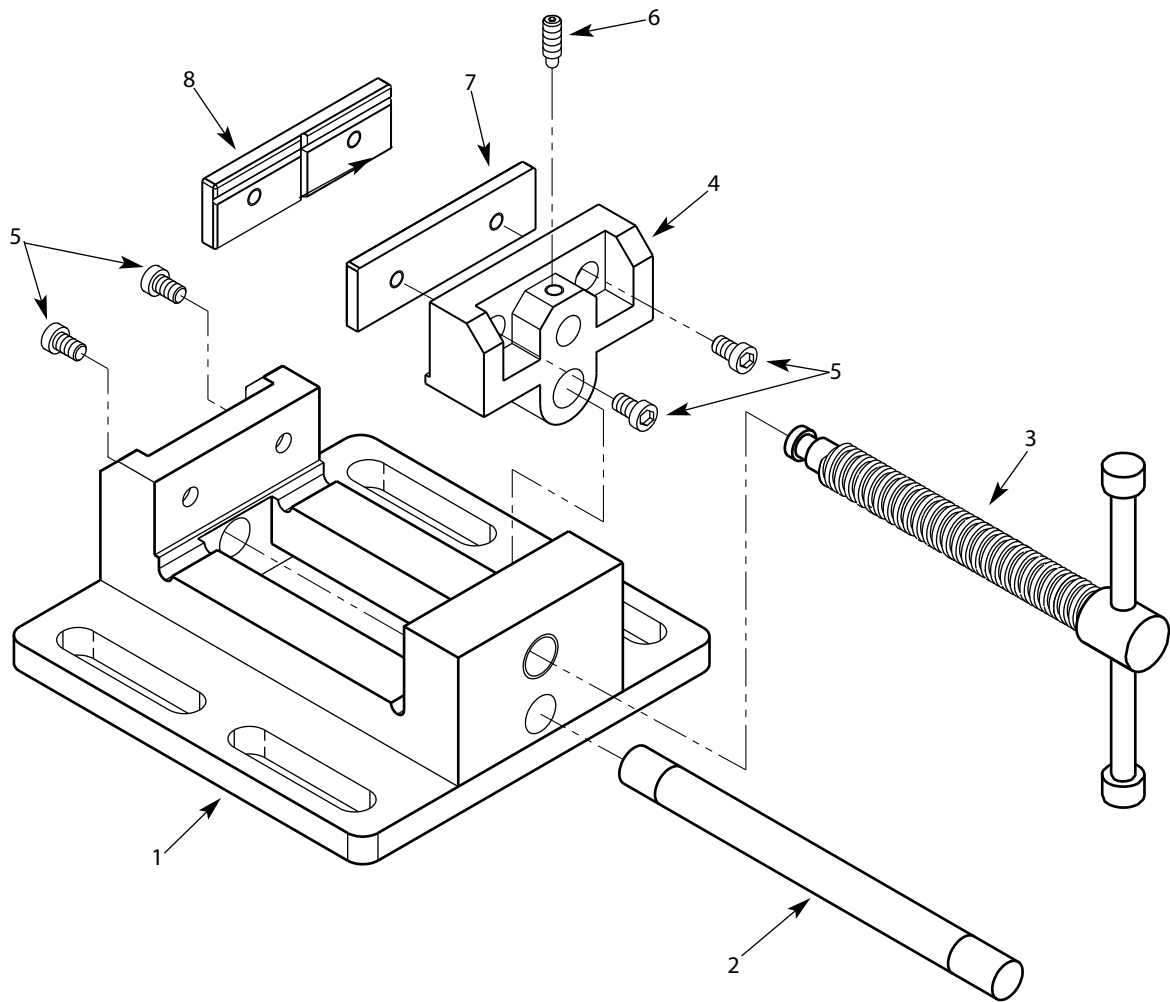


Figure 2 - Replacement Parts Illustration for 3", 4", 6" and 8" Low-Profile Drill Press Vises

REPLACEMENT PARTS LIST FOR LOW-PROFILE DRILL PRESS VISES

Ref. No.	Description	Part Number for:				Qty.
		3" 9612303A	4" 9612403A	6" 9612601A	8" 9612801A	
1	Base	†	†	†	†	1
2	Slide Bar	962853000	962853600	962854200	962854700	1
3	Lead Screw with Handle	962853100	962853700	962854300	962854800	1
4	Moving Jaw	962853200	962853800	962854400	962854900	1
5	6-1.0 x 12mm Socket Head Bolt	*	*	—	—	4
5	8-1.25 x 12mm Socket Head Bolt	—	—	*	—	4
5	8-1.25 x 25mm Socket Head Bolt	—	—	—	*	4
6	6-1.0 x 10mm Set Screw with Ball	962853300	—	—	—	1
6	8-1.25 x 10mm Set Screw with Ball	—	962853900	962853900	962853900	1
7	Flat Jaw Plate	962853400	962854000	962854500	962855000	1
8	Grooved Jaw Plate	962853500	962854100	962854600	962855100	1
Δ	Operator's Manual	962863300	962863300	962863300	962863300	1

Δ Not Shown.

* Standard hardware item available locally.

† Not available as replacement part.

PRENSA DE TORNILLO TALADRADORA DE BAJO PERFIL

NO. DE EXISTENCIA

12303A – 76 MM

12403A – 102 MM

12601A – 152 MM

12801A – 203 MM

Antes de utilizar este producto por primera vez, lea cuidadosamente todas las normas de seguridad y las instrucciones de operación y cumpla con las mismas.

DESCRIPCION

Las Prensas de Tornillo Taladradora de Bajo Perfil Palmgren de 76 mm, 102 mm, 152 mm y 203 mm han sido fabricadas de acero y hierro fundido durables. Se proporcionan con cuatro ranuras de montaje para asegurarlas a la superficie de trabajo.

REGLAS DE SEGURIDAD

- Entienda y obedezca todas las instrucciones de seguridad que se proporcionan con la prensa taladradora, la fresadora o con otras máquinas en las cuales se usa la prensa de tornillo.
- Aperne o agarre la prensa de tornillo a la superficie de trabajo en dos lugares de montaje, por lo menos, usando las pestañas de montaje que se proporcionan en la base.

- Asegúrese que la pieza de trabajo esté firmemente agarrada entre las mordazas antes de empezar la operación de maquinado.
- No la apriete demasiado—la prensa de tornillo puede desarrollar una gran fuerza de agarre. Use solamente la fuerza que se necesita.
- No golpee ni martille la pieza de trabajo. Esta prensa de tornillo ha sido diseñada para agarrar la pieza de trabajo en la posición que se desea solamente para las operaciones de maquinado.

DIMENSIONES

Refiérase a la Figura 1.

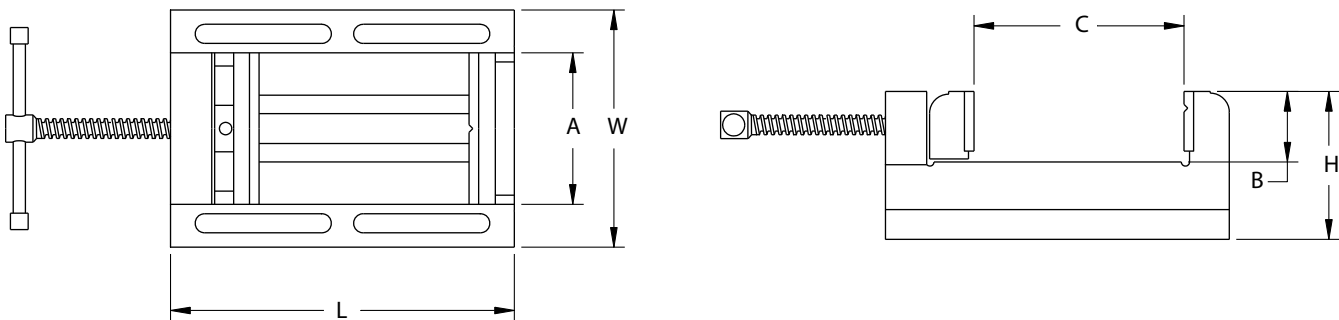


Figure 1 - Dimensiones

No. de Existencia		9612303	9612403	9612601	9612801
Ancho de la Mordaza	A	76 mm	102 mm	152 mm	203 mm
Profundidad de la Garganta	B	35 mm	44 mm	51 mm	51 mm
Abertura de la Mordaza	C	76 mm	102 mm	152 mm	203 mm
Altura Total	H	62 mm	73 mm	91 mm	91 mm
Longitud de la Base	L	165 mm	183 mm	278 mm	392 mm
Ancho de la Base	W	138 mm	157 mm	239 mm	281 mm

OPERACION

Refiérase a la Figura 2.

- Monte la prensa de tornillo en una superficie de trabajo en el lugar que se desea, asegurando por lo menos dos de las pestañas de montaje ubicadas en la base (Ref. No. 1).
- Abra las mordazas de la prensa de tornillo y coloque la pieza de trabajo entre ellas, en la posición que se desea. Asegure la superficie de trabajo entre las mordazas haciendo rotar el tornillo de entrada con el mango (Ref. No. 3). Asegúrese que la pieza de trabajo esté sujeta firmemente en la prensa de tornillo antes de empezar la operación de maquinado.

MAINTENIMIENTO

Las partículas de metal o de madera pueden dañar las superficies maquinadas, haciendo que la operación sea difícil o incorrecta.

- La prensa de tornillo se envía con un revestimiento protector. Este revestimiento se debe remover antes de la operación. Use un aceite penetrante para removerlo.
- Mantenga las superficies maquinadas y todas las partes móviles limpias y sin polvo, astillas y materias extrañas.
- Mantenga las superficies maquinadas y el tornillo de entrada lubricados con aceite para máquinas de peso mediano.

NOTES/NOTAS

NOTES/NOTAS

PALMGREN WARRANTY

C.H. Hanson / Palmgren warrants their products to be free of defects in material or workmanship. This warranty does not cover defects due directly or indirectly to misuse, abuse, normal wear and tear, failure to properly maintain the product, heated, ground or otherwise altered, or used for a purpose other than that for which is was intended.

The warranty does not cover expendable and/or wear part (i.e. v-belts, screws, abrasives, jaws), damage to tools arising from alteration, abuse or use other than their intended purpose, packing and freight. The duration of this warranty is expressly limited to the terms noted below beginning from the date of delivery to the original user.

The Palmgren branded items carry the following warranties on parts:

All vises, clamps, positioning tables, arbor presses, tombstones, jack screws and vise accessories - LIFETIME.

All bench grinders, drill presses, tapping machines, band saws, lathes, milling machines, abrasive finishing machines and work stands - 3 YEARS.

The obligation of C.H. Hanson / Palmgren is limited solely to the repair or replacement, at our option, at its factory or authorized repair agent of any part that should prove inoperable. Purchaser must lubricate and maintain the product under normal operating conditions at all times. Prior to operation become familiar with product and the included materials, i.e. warnings, cautions and manuals.

Failure to follow these instructions will void the warranty.

This warranty is the purchaser's exclusive remedy against C.H. Hanson for any inoperable parts in its product. Under no circumstances is C.H. Hanson liable for any direct, indirect, incidental, special or consequential damages including loss of profits in any way elated to the use or inability to use our products. This warranty gives you specific legal rights which may vary from state to state.



Palmgren - a C.H. Hanson Company
2000 N. Aurora Rd., Naperville, IL 60563 U.S.A.
or call **1-800-827-3398**