



OWNER'S MANUAL

INSTALLATION AND OPERATION INSTRUCTIONS FOR SUBMERSIBLE UTILITY PUMP

Model:

**91270, 91270-25, 91370, 91370-25
91570, 91575**



**2301 Traffic St. NE
Minneapolis, MN 55413
1-800-495-9278**

If for any reason you have questions concerning your new Superior Pump, call us toll free at 1-800-495-9278.

Carefully read and understand all of the Warnings and installation instructions in this manual. Failure to follow these instructions could lead to serious bodily injury and/or property damage. Retain these instructions for future reference.

This pump has been manufactured with your needs in mind. Properly installed in the right application, your new Superior Pump will give you years of carefree performance.

DANGER !

Water and electricity can be dangerous if certain precautions are not adhered to. This pump is designed to operate perfectly safe in a water environment; however, improper use and installation can result in personal harm from electrical shock. Please pay attention to the following warnings.

WARNING !

Never touch any electrical device, including this pump, when it is touching water, in water, or even in a moist environment. Always unplug (disconnect the electricity) when working on or installing the unit.

WARNING !

RISK OF ELECTRICAL SHOCK. This pump is supplied with a grounding conductor and grounding-type attachment plug. To reduce the risk of electrical shock, be certain that it is connected only to a properly grounded, grounding-type receptacle.

WARNING !

Do not use the power cord or discharge hose to carry or handle the pump. Doing so may cause damage to the power cord or discharge hose. Use the carrying handle supplied with the pump.

WARNING !

Always use a grounded outlet. A three-prong mating type receptacle is needed for safe use. This should be in accordance with the National Electric Code and any additional codes or laws required by your local government.

NOTICE !

It is strongly recommended to use a ground fault interrupt device on any electrical appliance, including this pump, when used in a wet or moist environment. This is required by many local codes and enforcement agencies. It is strongly recommended by Superior Pump as it provides a much safer installation and will greatly reduce possible injury from electrical shock.

LIMITED WARRANTY AND LIMITATION OF LIABILITY

Decko Products warrants this product free from material and/or manufacturing defects for one year from date of purchase (three years on select cast iron pumps). As the sole and exclusive remedy for a breach of this limited warranty, if the product is found by Decko Products to be defective, Decko Products, at its option, will refund the purchase price or replace the product with an equivalent product if it is returned to the place of purchase or returned postpaid to Decko Products, ATTN: Warranty Dept., 2301 Traffic St. NE, Minneapolis, MN 55413, with proof of purchase. Any disassembly, modification, or abuse of this product voids this limited warranty. This product is not designed for pumping flammable or corrosive fluids, and use of this product to pump such materials also voids this limited warranty.

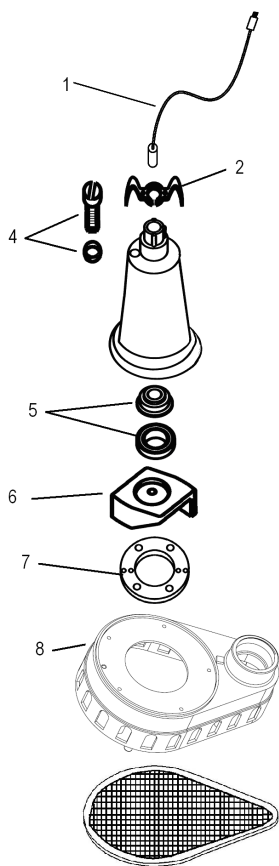
**DECKO PRODUCTS DISCLAIMS ALL OTHER
EXPRESS OR IMPLIED WARRANTIES,
INCLUDING WARRANTIES OF
MERCHANTABILITY OR FITNESS FOR A PARTICULAR PURPOSE.**

IMPORTANT NOTICE: Some commercial and residential insurance policies extend coverage for damages incurred by product failure. In most cases, you will need to have possession of the product to support your claim. In the case where you need to retain possession of the product to support a damage claim you submit to your insurance company, Decko Products will exchange the unit or refund the original price once the claim is settled with the insurer.

REPLACEMENT PARTS

To order replacement parts call

1-800-495-9278



Ref#	Description	Part #
1	Power Cord	99009
2	Handle	99050
4	Oil Fill Plug with O-ring	99056
5	Shaft Seal	99057
6	Impeller	99096
7	Gasket	99088
8	Volute/Base	99185
9	Intake Screen	99186

DANGER !

Do not use this pump to pump chemicals, flammable liquids, sewage or corrosive liquids. You could injure yourself and the pump will fail. Pumping these types of liquids voids the warranty. Superior Pump and other pump companies manufacture pumps for these types of liquids. Make sure you purchase a pump designed for your specific needs. This pump will handle fluids with the same characteristics as water. If you have any questions call us at 1-800-495-9278.

WARNING !

Your pump has thermal over-load protection built in. It is not recommended for pumping liquids over 120° F. The thermal overload protector will automatically shut down the pump in an overheat situation. It will then reset itself once the pump cools down. This overload is designed as a safety device and it will fail after repeated use. Normal operation is for fluids between 32° F & 120° F.

WARNING !

DO NOT RUN THE PUMP DRY. The pump depends on water for cooling and lubrication.

Operating the pump without water may cause the motor to overheat or cause damage to parts of the pump. It may also shorten the life of your pump.

NOTICE !

EXTENSION CORDS

For best performance, it is recommended to connect the power cord directly to the grounded GFCI outlet. If the use of an extension cord is necessary, always use a grounded waterproof type cord. Never use longer than a 25-ft. cord that is lighter than 14/3 gauge.

DANGER !

Keep all electrical connections away from wet and moist environments. Wet connections can cause electrical shock resulting in personal injury.

USE AND INSTALLATION

WARNING !

Always disconnect the power source before attempting to install, service or perform maintenance on the pump. Failure to do so may result in fatal electrical shock. Always disconnect the power source before

Your Superior Pump is designed and built to give you reliable performance and long life. It will pump water automatically for years when properly installed in the right environment.

INSTALLATION/OPERATION

1. Place the pump on a hard surface in the water. Do not set the pump directly in mud or sand. This may cause the intake screen to clog or damage to your pump.
2. The water level must be at least 1/2" deep for the pump to operate.
3. Plug the power cord into a grounded 120-volt AC outlet. The pump will start to operate as soon as the cord is plugged in.
4. The pump will remove water down to 1/2" of the surface
5. The pump should be turned off once the water reaches these levels.
6. Do not let the pump run dry. The pump depends on water for cooling and lubrication. Operating the pump without water may cause the motor to overheat or cause damage to parts of the pump. It may also shorten the life of your pump.

Anything that will pass through the intake screen holes will pass through the pump without causing damage. The intake screen on the pump removes easily for cleaning. The pump can also be back-flushed using the garden hose adapter.

NOTE: This pump has a built in anti-airlock device. Leakage is normal from this device

TROUBLESHOOTING

PROBLEM	POSSIBLE CAUSES	HOW TO CORRECT
If the pump does not start or run	Pump is not plugged in, switch or breaker is off	Plug pump in or turn on switch/breaker
	Check for blown fuses or tripped circuit breakers or tripped GFCI outlets	Replace fuse, reset breaker, reset GFCI outlet
	Motor thermal protector tripped	Allow pump to cool. Pump will reset
If the pump runs but moves little or no water	Clogged intake screen	Clean or replace screen
	Clogged discharge hose/pipe	Remove clog
	Frozen discharge hose/pipe	Allow hose/pipe to thaw
	Pump is air locked	Clean out airlock hole with a paper clip or pipe cleaner
	Low line voltage	Check wire size and increase if necessary
	Check valve is stuck in the closed position	Inspect, repair or replace if necessary
	Worn, damaged or clogged pump parts	Inspect for wear, damage or clog and clean or replace if necessary
	Discharge head exceeds pump capacity	If pumping height is over 25', the pump will not move water. See performance chart

NOTICE ! Height and/or piping restriction will reduce the pump output performance. See the performance chart below. Whenever possible use the same or larger size pipe than the pump discharge for optimum performance. Reducing the pipe size will not harm your pump, it will just reduce the output.

PERFORMANCES

<i>Model</i>	<i>Output in gallons per minute at listed discharge height above pumping level</i>					
	<i>0'</i>	<i>5'</i>	<i>10'</i>	<i>15'</i>	<i>20'</i>	<i>25'</i>
91270, 91270-25	30	22	20	16	9	2
91370, 91370-25	48	44	40	36	23	16
91575	55	48	42	34	25	16

SPECIFICATIONS

Power supply requirements.....	120V, 60 Hz
Motor.....	1/2 HP, Continuous Duty, Split Capacitor Thermally Protected
1/4 HP Amps	3.8
1/3 HP Amps	4.1
1/2 HP Amps	4.9
Liquid Temperature Range.....	32°F-120°F (0°C - 49°C)
Circuit Requirements	15 amp minimum
Solids Handling	3/8"
Discharge Size	1-1/2" NPT or Garden Hose (with supplied adapter)
1/4 HP & 1/3 HP Warranty.....	1 Years
1/2 HP Warranty	3 Years